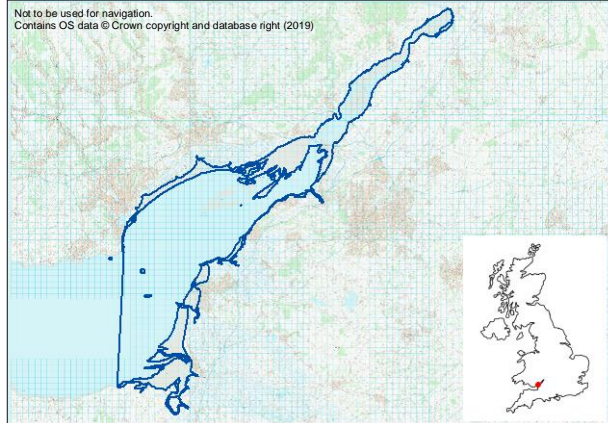


Severn Estuary SAC and SPA

Description:

The Severn Estuary European Marine Site comprises the following sites: Severn Estuary Special Area of Conservation (SAC), the Severn Estuary Special Protection Area (SPA) and Severn Estuary Ramsar Site. Located between Wales and England in south-west Britain, the Severn Estuary is a large estuary with extensive intertidal mudflats and sandflats, rocky platforms and islands. Salt marsh fringes the coast backed by ditches and occasional brackish ditches. The seabed is rock and gravel with sub-tidal sandbanks. The estuary's classic funnel shape, unique in the UK, is a factor causing the Severn to have the second- highest tidal range in the world (after the Bay of Fundy in Canada).



Qualifying Features:

The Severn Estuary SAC hosts the following habitats: estuaries, mudflats and sandflats not covered by seawater at low tide, Atlantic salt meadows (*Glauco-Puccinellietalia maritima*), sandbanks which are slightly covered by sea water all the time, and reefs. The site also supports sea lamprey (*Petromyzon marinus*), river lamprey (*Lampetra fluviatilis*) and twaite shad (*Alosa fallax*).

The Severn Estuary SPA supports overwintering Bewick's swan (*Cygnus columbianus bewickii*); on passage ringed plover (*Charadrius hiaticula*) and overwintering curlew (*Numenius arquata*), dunlin (*Calidris alpina alpina*), pintail (*Anas acuta*), redshank (*Tringa tetanus*), and shelduck (*Tadorna tadorna*). It also regularly supports at least 20,000 waterfowl.

Management:

- [Severn Estuary Partnership](#)

Stakeholder Concerns:

The three key activities highlighted by the online stakeholder which may cause the greatest impact on the designated features within this site include paddle sports, powered flying and 'other' (dog walking).

MPA: Severn Estuary SAC & SPA				No. Stakeholders: 1 online & 0 workshop			
Activity	Frequency	Duration	Participation	Intensity	Confidence	MPA Extent	Trend
Board sports	3	1	1	3	H	1	➔
Geophysical surveys	?	?	?	?	?	?	?
Motor boating	?	?	?	?	?	?	?
Jetskis	?	?	?	?	?	?	?
Paddle sports	3	1	1	3	H	1	➔
Parascending	?	?	?	?	?	?	?
Sailing (non-motorised)	?	?	?	?	?	?	?
SCUBA diving	?	?	?	?	?	?	?
Swimming / Snorkelling	?	?	?	?	?	?	?
Towed water sports	?	?	?	?	?	?	?
Wildlife watching from the sea	?	?	?	?	?	?	?
Bait collection	?	?	?	?	?	?	?
Beach recreation	?	?	?	?	?	?	?
Coasteering	?	?	?	?	?	?	?
Land boarding	?	?	?	?	?	?	?
Motorsports (quad bikes, motorbikes)	?	?	?	?	?	?	?
Vehicle access (cars on foreshore)	?	?	?	?	?	?	?
Wildlife watching from the land	?	?	?	?	?	?	?
Drone use	?	?	?	?	?	?	?
Gliding (unpowered)	?	?	?	?	?	?	?
Aircraft (powered)	1	1	1	1	H	2	?

KEY

FREQUENCY	DURATION	PARTICIPATION	INTENSITY	CONFIDENCE	EXTENT	TREND
4 Regular/daily	4 >8 hours	6 >100	45-96 High	H High	2 Whole MPA (solid)	⬆ Increase
3 Regular/weekends	3 4-8 hours	5 51-100	24-40 Med-high	M Medium	1 Part of MPA (shaded)	➔ Stay the same
2 Seasonally	2 2-4 hours	4 21-50	9-20 Low-med	L Low	0 Does not occur	⬇ Decrease
1 Sporadically	1 <2 hours	3 11-20	1-8 Low	? Data missing	? Data missing	? Data missing
0 Does not occur	0 Does not occur	2 6-10	0 Does not occur			
? Data missing	? Data missing	1 1-5	? Data missing			
		0 Does not occur				
		? Data missing				