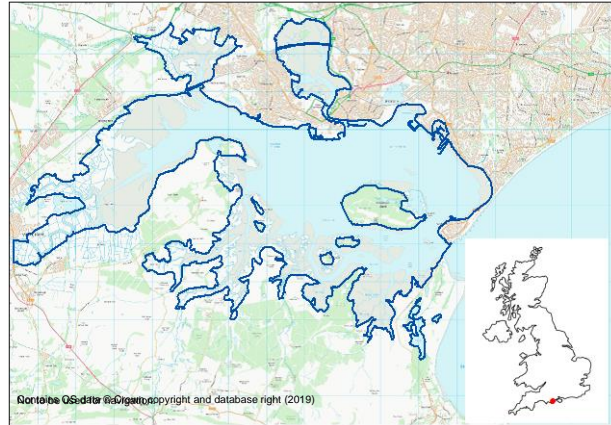


Poole Harbour SPA

Description:

Poole Harbour Special Protection Area (SPA) is a large natural harbour comprising of extensive tidal mudflats, seagrass beds and saltmarsh, together with associated reedbed, freshwater marsh and wet grassland. It has a narrow entrance and a small tidal range and as a result, although classified as an estuary (several rivers flow into it) it has many of the qualities of a large lagoon. The north side is largely urbanised while the west and south side abut heath, mire or grassland. Extensive intertidal mudflats provide an important feeding habitat for overwintering waterbirds, while the fringing saltmarsh and reedbed provide roosting areas and feeding habitat for a variety of bird species.



Qualifying Features:

Poole Harbour SPA supports breeding common tern (*Sterna hirundo*) and Mediterranean gull (*Larus melanocephalus*), as well as migratory aquatic warbler (*Acrocephalus paludicola*) and little egret (*Egretta garzetta*). The site also supports overwintering avocet (*Recurvirostra avosetta*), little egret (*Egretta garzetta*), black-tailed godwit (*Limosa limosa islandica*), and shelduck (*Tadorna tadorna*), as well as supporting an internationally important Waterbird assemblage.

Management:

Voluntary management initiatives in place which aim to protect the intertidal sediment and wading birds include:

- Voluntary codes of conduct e.g. [Southern Inshore Fisheries and Conservation Authority bait collection voluntary agreement](#).
- Various local management systems e.g. [Special Nature Conservation Order at Fareham Creek](#)
- [Kite surfing code of conduct](#)

Stakeholder Concerns:

Concerns over the level of bait collection in the harbour.

Academic Studies:

The impacts of bait collection have received considerable attention over the last 30 years. Physical characteristics of the shore are altered with topographical changes redistributing organic material, loss of the finer grained particles and changes in bioavailability of sediment-bound pollutants (Howell, 1985; Watson *et al.*, 2007). Not surprisingly, bait collection also results in changes in the size/age structure of exploited populations (Watson *et al.*, 2007) as well as significant and long lasting reductions of other invertebrate species (Brown and Wilson, 1997; Ambrose *et al.*, 1998; Watson *et al.*, 2007; Masero *et al.*, 2008; Winberg and Davis, 2014; Watson *et al.*, 2017). Not only does it affect their prey availability (Shepherd and Boates, 1999; Masero *et al.*, 2008) but there is also evidence that wading bird populations are disturbed by collectors on the shore (Townshend and O'Conner, 1993).

MPA: Poole Harbour SPA				No. Stakeholders: 1 online & 0 workshop			
Activity	Frequency	Duration	Participation	Intensity	Confidence	MPA Extent	Trend
Board sports	?	?	?	?	?	?	?
Geophysical surveys	?	?	?	?	?	?	?
Motor boating	?	?	?	?	?	?	?
Jetskis	?	?	?	?	?	?	?
Paddle sports	?	?	?	?	?	?	?
Parascending	?	?	?	?	?	?	?
Sailing (non-motorised)	?	?	?	?	?	?	?
SCUBA diving	?	?	?	?	?	?	?
Swimming / Snorkelling	?	?	?	?	?	?	?
Towed water sports	?	?	?	?	?	?	?
Wildlife watching from the sea	?	?	?	?	?	?	?
Bait collection	4	2	?	?	H	1	
Beach recreation	?	?	?	?	?	?	?
Coasteering	?	?	?	?	?	?	?
Land boarding	?	?	?	?	?	?	?
Motorsports (quad bikes, motorbikes)	?	?	?	?	?	?	?
Vehicle access (cars on foreshore)	?	?	?	?	?	?	?
Wildlife watching from the land	?	?	?	?	?	?	?
Drone use	?	?	?	?	?	?	?
Gliding (unpowered)	?	?	?	?	?	?	?
Aircraft (powered)	?	?	?	?	?	?	?

KEY

FREQUENCY	DURATION	PARTICIPATION	INTENSITY	CONFIDENCE	EXTENT	TREND
4 Regular/daily	4 >8 hours	6 >100	45-96 High	H High	2 Whole MPA (solid)	↑ Increase
3 Regular/weekends	3 4-8 hours	5 51-100	24-40 Med-high	M Medium	1 Part of MPA (shaded)	→ Stay the same
2 Seasonally	2 2-4 hours	4 21-50	9-20 Low-med	L Low	0 Does not occur	↓ Decrease
1 Sporadically	1 <2 hours	3 11-20	1-8 Low	? Data missing	? Data missing	? Data missing
0 Does not occur	0 Does not occur	2 6-10	0 Does not occur			
? Data missing	? Data missing	1 1-5	? Data missing			
		0 Does not occur				
		? Data missing				

References:

- Ambrose, W.G., Dawson, M., Gailey, C., Ledkovsky, P., O'Leary, S., Tassinari, B., Vogel, H., Wilson, C., 1998. Effects of baitworm digging on the soft-shelled clam *Mya arenaria*, in Maine: shell damage and exposure on the sediment surface. *J. Shellfish Res.* 17, 1043-1049.
- Brown, B., Wilson, W.H., 1997. The role of commercial digging of mudflats as an agent for change of infaunal intertidal populations. *J. Exp. Mar. Biol. Ecol.* 218, 49-61.
- Fowler, S.L. 1999. Guidelines for managing the collection of bait and other shoreline animals within UK European marine sites. English Nature (UK Marine SACs Project). 132 pages.
- Fowler, S.L., 2001. Investigation into the Extent of Bait Collection and its Impacts on Features of Conservation Interest for Birds and Intertidal Species and Habitats within the Solent Natural Area. Report for English Nature, p. 102.
- Howell, R., 1985. The effect of bait-digging on the bioavailability of heavy metals from surficial intertidal sediments. *Mar. Poll. Bull.* 16, 292-295.
- Masero, J.A., Castro, M., Estrella, S.M., Perez-Hurtado, A., 2008. Evaluating impacts of shellfish and baitworm digging on bird populations: short-term negative effects on the availability of the mudsnail *Hydrobia ulvae* to shorebirds. *Biodivers. Conserv.* 17, 691-701.
- Townshend, D.J., O'Connor, D.A., 1993. Some effects of disturbance to waterfowl from bait digging and wildfowling at Lindisfarne Nature Reserve, north-east England. *Wader Bird Study Group* 68, 47-52.
- Watson, G.J., Farrell, P., Stanton, S., Skidmore, L.C., 2007. The effects of bait collection on *Nereis virens* populations and macrofaunal communities in the Solent, UK. *J. Mar. Biol. Assoc.* 87, 703-71
- Watson, G.J., Murray, J.M., Schaefer, M., Bonner, A., Gillingham, M. 2017. Assessing the impacts of bait collection on inter-tidal sediment and the associated macrofaunal and bird communities: The importance of appropriate spatial scales. *Marine Environmental Research*, 130, 122-133
- Winberg, P.C., Davis, A.R., 2014. Ecological response to MPA zoning following cessation of bait harvesting in an estuarine tidal flat. *Mar. Ecol. Prog. Ser.* 517, 171-180.