

Our ref: 100055

[REDACTED]
Highways England
Bridge House
Walnut Tree Close
Guildford
GU1 4LZ

www.highwaysengland.co.uk

6 August 2019

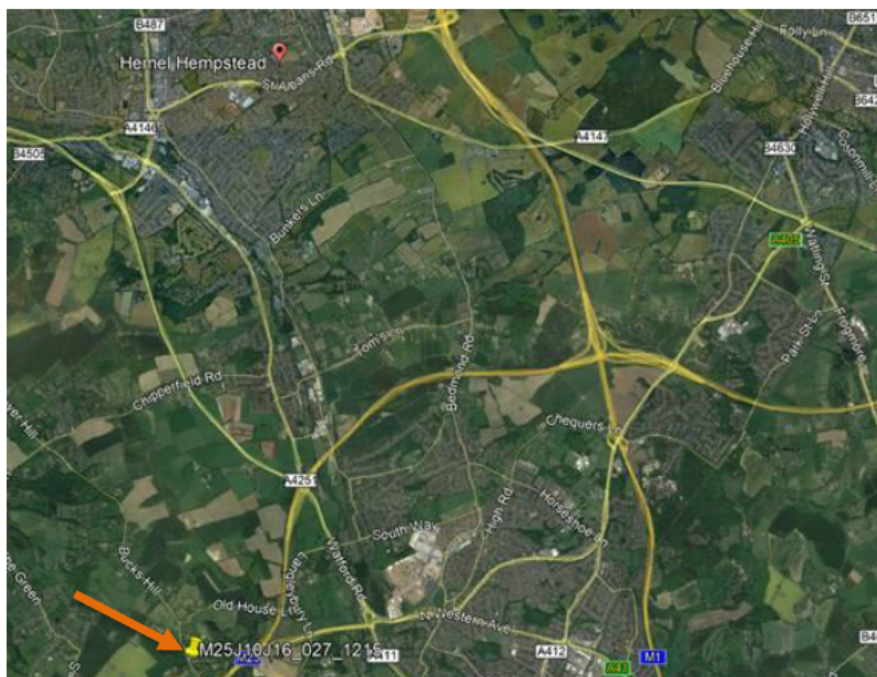
Dear [REDACTED]

Thank you for your request for information about air quality in South West Hertfordshire, dated 26 June 2019.

I am dealing with your request under the terms of the Environmental Information Regulations 2004. This is because the information requested concerns measures and activities affecting or likely to affect elements of the environment or affect factors such as noise, pollution discharges and other releases into the environment.

Within the area highlighted in your map, we do not have an automatic air quality monitoring system. However, in 2016 we undertook air quality monitoring for Nitrogen Dioxide, using a passive diffusion tube, at one location close to the area identified within your map.

The monitoring location was along Toms Hill Road between Old House Lane and the M25, near junction 19 which is also identified on the map below (Site ID: M25J10J16_027_1215). The measured annual mean Nitrogen Dioxide concentration was $18.7\mu\text{g}/\text{m}^3$, which is below the UK Air Quality Threshold of $40\mu\text{g}/\text{m}^3$.



If you are unhappy with the way we have handled your request you may ask for an internal review within 2 months of the date of this response for Freedom of Information requests and within 40 days for Environmental Information Regulations requests. Our internal review process is available at:

<https://www.gov.uk/government/organisations/highways-england/about/complaints-procedure>

If you require a print copy, please phone the Information Line on 0300 123 5000; or e-mail info@highwaysengland.co.uk. You should contact me if you wish to complain.

If you are not content with the outcome of the internal review, you have the right to apply directly to the Information Commissioner for a decision. The Information Commissioner can be contacted at:

Information Commissioner's Office
Wycliffe House
Water Lane
Wilmslow
Cheshire
SK9 5AF

If you have any queries about this letter, please contact me. Please remember to quote reference number 100055 in any future communications.

Yours sincerely



Team Executive - OD SE Business Management Team
OPSSECorrespondenceTeam@highwaysengland.co.uk