



Public Health  
England

Protecting and improving the nation's health

# **Suspected and laboratory confirmed reported norovirus outbreaks in hospitals (England) and norovirus laboratory reports (England and Wales): weeks 36 to 39, 2019**

Health Protection Report  
Volume 13 Number 36  
11 October 2019

Please note: The [Hospital Norovirus Outbreak Reporting System website](#) was relaunched on Monday 7 October 2019 after going offline in May 2019. During this period data on hospital outbreaks was manually collated.

HNORS users have been encouraged to retrospectively report any outbreaks which may have occurred during this period, to ensure ascertainment is consistent with the period prior to HNORS going offline.

## Suspected and laboratory confirmed reported norovirus outbreaks in hospitals: outbreaks occurring in weeks 36 to 39, 2019 (England)

There were eight reported outbreaks which occurred between weeks 36 and 39 2019, six of which (75 per cent) led to ward/bay closures or restrictions to admissions and three of which (38 per cent) were recorded as laboratory confirmed due to norovirus. From week 01 (week beginning 31 December 2018) to week 39 (week beginning 23 September 2019), 167 outbreaks have been reported. Eighty-seven percent (145) of reported outbreaks resulted in ward/bay closures or restrictions to admissions and seventy per cent (117) were laboratory confirmed as due to norovirus.

## Suspected and laboratory-confirmed reported norovirus outbreaks in hospitals in England, with regional breakdown: outbreaks occurring in weeks 01-39 2019

PHE Centre	Outbreaks between weeks 36-39/2019			Outbreaks between weeks 01-39/2019		
	Outbreaks	Ward/bay closure †	Lab confirmed	Outbreaks	Ward/bay closure †	Lab confirmed
East of England						
East Midlands				14	14	8
London						
North East				18	15	15
North West	1	1	1	26	26	20
South East				29	29	26
South West	5	3	2	49	31	32
West Midlands	2	2		24	23	9
Yorkshire and Humberside				7	7	7
<b>Total</b>	<b>8</b>	<b>6</b>	<b>3</b>	<b>167</b>	<b>145</b>	<b>117</b>

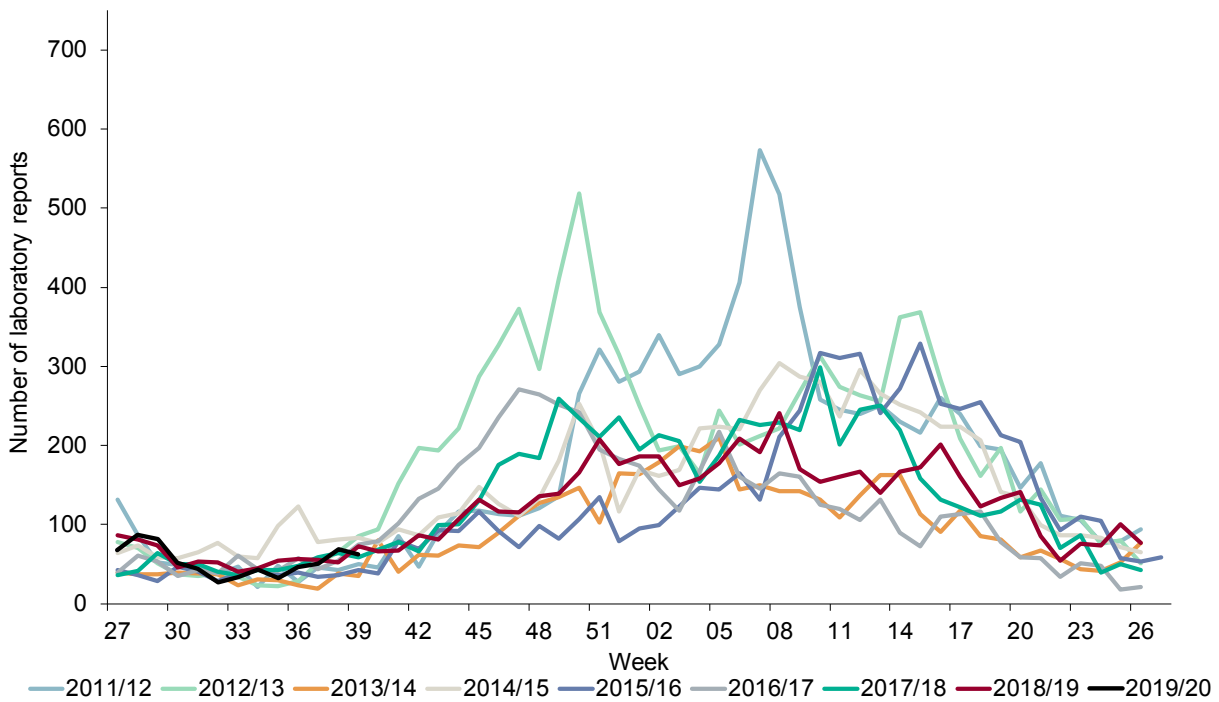
† Note: not all outbreaks result in whole wards closures, some closures are restricted to bays only

## Norovirus laboratory reporting: data from SGSS (England and Wales)

From week 01, 2019 to week 39 2019 there were 4551 laboratory reports of norovirus. This is lower than the average number of laboratory reports for the same period in the five years between 2014 and 2018 (5028). Norovirus activity from weeks 36 to 39 of the 2019/20 season was lower than the five season average for this four week period (2014/15 to 2018/19).

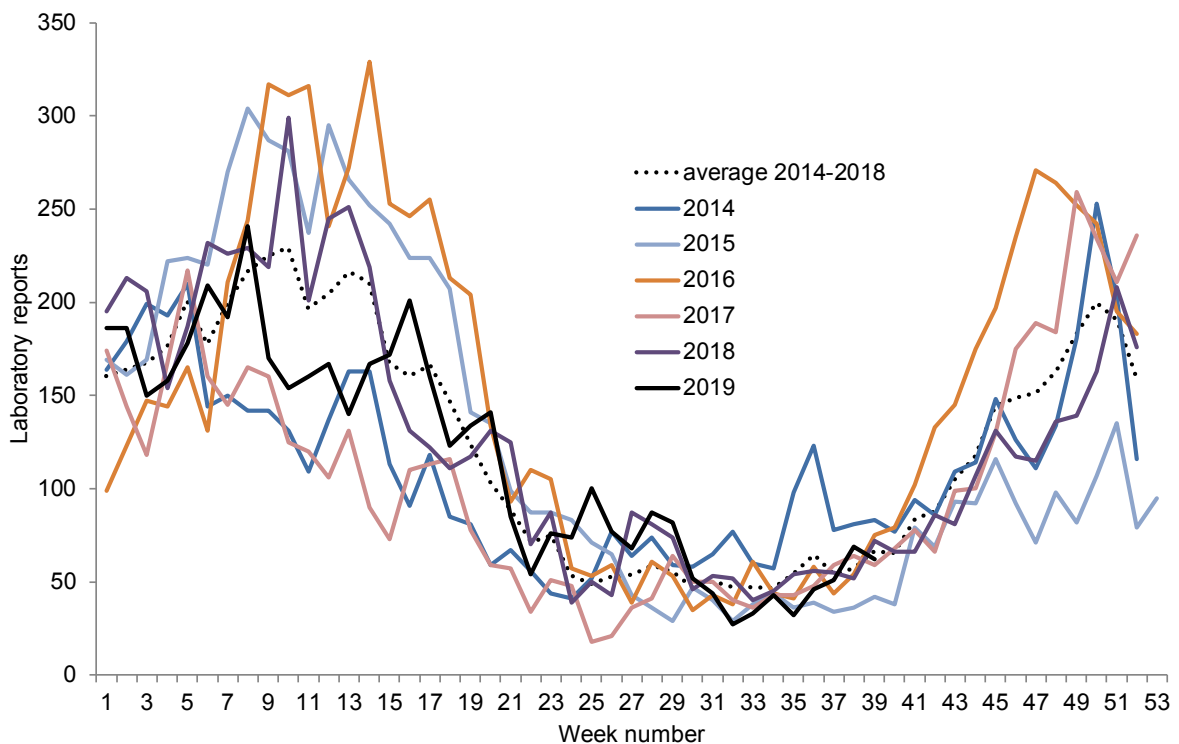
**Note:** Data from laboratory reporting are subject to a reporting delay and the number reported in the most recent weeks is likely to rise as further laboratory reports are received.

**Figure 1 Seasonal comparison of laboratory reports of norovirus 2011/12-2019/20 (England and Wales)**



**Note.** The norovirus season runs from week 27 in year 1 to week 26 in year 2, i.e. week 27 2019 – week 26 2020 July to June, in order to capture the winter peak in one season.

**Figure 2: Current weekly norovirus laboratory reports compared to weekly mean reports 2014-2019 (England and Wales)**



# About Public Health England

Public Health England exists to protect and improve the nation's health and wellbeing, and reduce health inequalities. We do this through world-class science, research, knowledge and intelligence, advocacy, partnerships and the delivery of specialist public health services. We are an executive agency of the Department of Health and Social Care, and are a distinct delivery organisation with operational autonomy to advise and support government, local authorities and the NHS in a professionally independent manner.

## *About Health Protection Report*

*Health Protection Report* is a national public health bulletin for England and Wales, published by Public Health England. It is PHE's principal channel for the dissemination of laboratory data relating to pathogens and infections/communicable diseases of public health significance and of reports on outbreaks, incidents and ongoing investigations.

Public Health England, Wellington House, 133-155 Waterloo Road, London SE1 8UG. Tel: 020 7654 8000 [www.gov.uk/phe](http://www.gov.uk/phe)

Twitter: [@PHE\\_uk](https://twitter.com/PHE_uk) Facebook: [www.facebook.com/PublicHealthEngland](https://www.facebook.com/PublicHealthEngland)

Queries relating to this document should be directed to:  
[EEDD@phe.gov.uk](mailto:EEDD@phe.gov.uk)

© Crown copyright 2019

You may re-use this information (excluding logos) free of charge in any format or medium, under the terms of the Open Government Licence v3.0. To view this licence, visit [OGL](https://www.ogil.io/uk) or email [psi@nationalarchives.gsi.gov.uk](mailto:psi@nationalarchives.gsi.gov.uk). Where we have identified any third party copyright information you will need to obtain permission from the copyright holders concerned.

Published: **October 2019**  
PHE publications  
gateway number: **2019128**

PHE supports the UN  
Sustainable Development Goals

