



# SGS

EU Type Examination Certificate Number: **0120/SGS0341**

## Corinex Communications a.s.

Nove Zahrady I. 13/A – 821 05,  
Bratislava,  
Slovak Republic

Instrument Identification:  
**CMS100 Series**

**Single Phase, Active Import/Export (kWh), Electricity Meter**

Instrument Traceable Number  
**0120/SGS0341**

has been assessed and certified as meeting the requirements of

## EU Directive 2014/32/EU

on Measuring Instruments Annex II, Module B

It is certified that the manufacturer's technical design and specimen for the above instrument has been examined and, based on the evidence submitted, it is considered that the instrument conforms to the requirements of Annex V of EU Directive 2014/32/EU

This certificate must be used in conjunction with a certificate covering the product verification as required in Annex II, Module D or Annex II, Module F

This certificate is valid until **23<sup>rd</sup> November 2027**  
**Issue 3**

Certification is based on report number(s) SHES170800749801 dated 24<sup>th</sup> November 2017  
EMA247014/1/TR50579 dated 23<sup>rd</sup> November 2017  
EMA248884

Authorised Signature

SGS United Kingdom Limited, Notified Body 0120  
Unit 202B Worle Parkway, Weston-super-Mare, BS22 6WA, UK  
t +44 (0)1934 522917 f +44 (0)1934 522137 [www.sgs.com](http://www.sgs.com)

SGS United Kingdom Limited, Units 12A & 12B, South Industrial Estate, Bowburn, Durham, DH6 5AD, UK  
t +44 (0)191 377 2000 f +44 (0)191 377 2020 [www.sgs.com](http://www.sgs.com)

Contact Address




This document is issued, on the Client's behalf, by the Company under its General Conditions of Service printed overleaf.  
The Client's attention is drawn to the limitation of liability, indemnification and jurisdiction issues defined therein.

Any other holder of this document must be aware that the information contained hereon reflects the Company's findings at the time of its intervention only and within the limits of Clients instructions, if any. The Company's sole responsibility is to its Client and this document does not exonerate parties to a transaction from exercising all their rights and obligations under the transaction documents.

EU Type Examination Cert.


SGSPAPER  
19022248



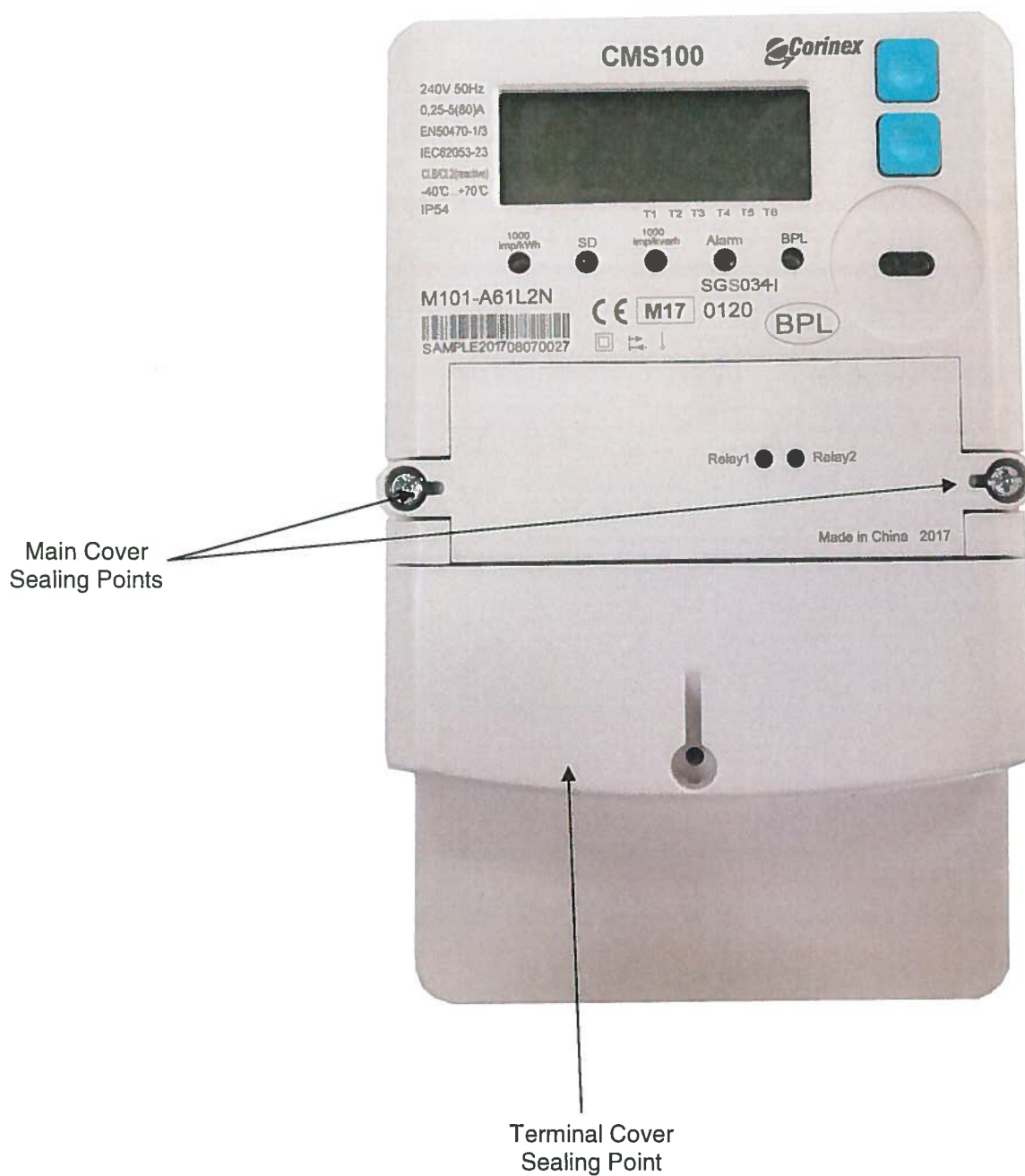
	EU-Type Examination Certificate Number:	
	<b>0120/SGS0341</b>	
	Issue Number: 3	Dated: 27 <sup>th</sup> June 2018


## 1. Technical Data

Manufacturer	Corinex Communications a.s.
Meter Type	CMS100 Series
Voltage Rating ( $U_n$ )	220V - 240V
Current Rating ( $I_{min}$ – $I_{ref}$ ( $I_{max}$ ))	0.25-5(60)A, 0.25-5(80)A
Frequency ( $F_n$ )	50Hz, 60Hz (IEC only)
Active Accuracy Class ( $kWh$ )	B ( $kWh$ )
Type of circuit	1p2w
Temperature Range	-40°C to +70°C
Software/ Firmware Version No	20170907
CRC Checksum	0x607B
Identification Location	LCD
Bill Of Materials Number	LY5.528.001480MX-V01.01 LY5.528.001515MX-V01.01 LY5.528.001516MX-V01.01 LY7.303.001068MX-V01.01
IP Rating	IP54
Insulation Protective Class	Class II
LED Pulse Constant	1000imp/kWh, 10000imp/kWh
Impulse Voltage Rating	6kV
AC Voltage Rating	4kV
Main Cover Sealing Type	Wire & Crimp
Integrity of meter	Inaccessible without breaking seals
Intended Location of the Meter	Indoor
Type of Register	LCD
Terminal Arrangement(s)	DIN
Location of Manufacturers Address	Associated Documents

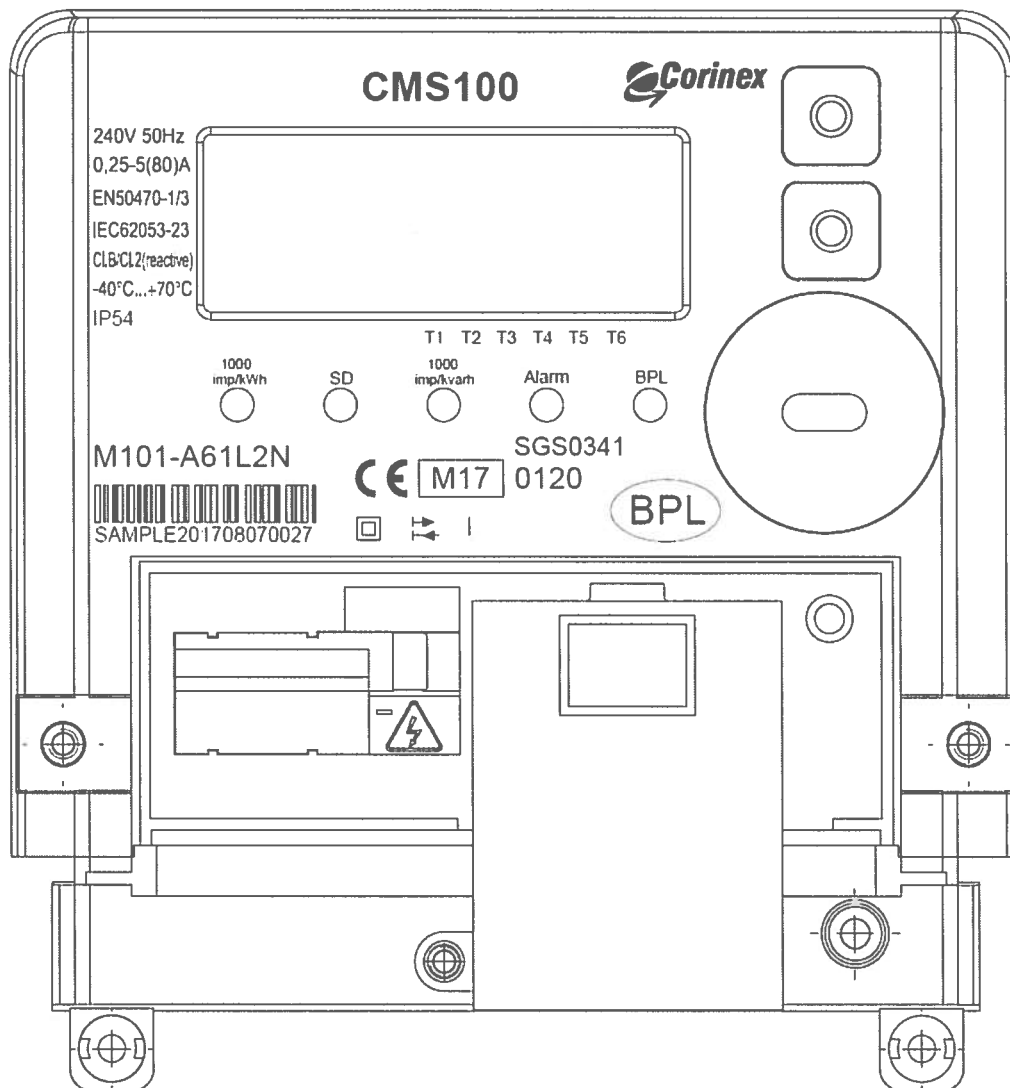
	EU-Type Examination Certificate Number:	
	<b>0120/SGS0341</b>	
	Issue Number: 3	Dated: 27 <sup>th</sup> June 2018

## 2. Photograph of Meter and Sealing Plan



	EU-Type Examination Certificate Number:	
	<b>0120/SGS0341</b>	
	Issue Number: 3	Dated: 27 <sup>th</sup> June 2018

### 3. Example of Nameplate

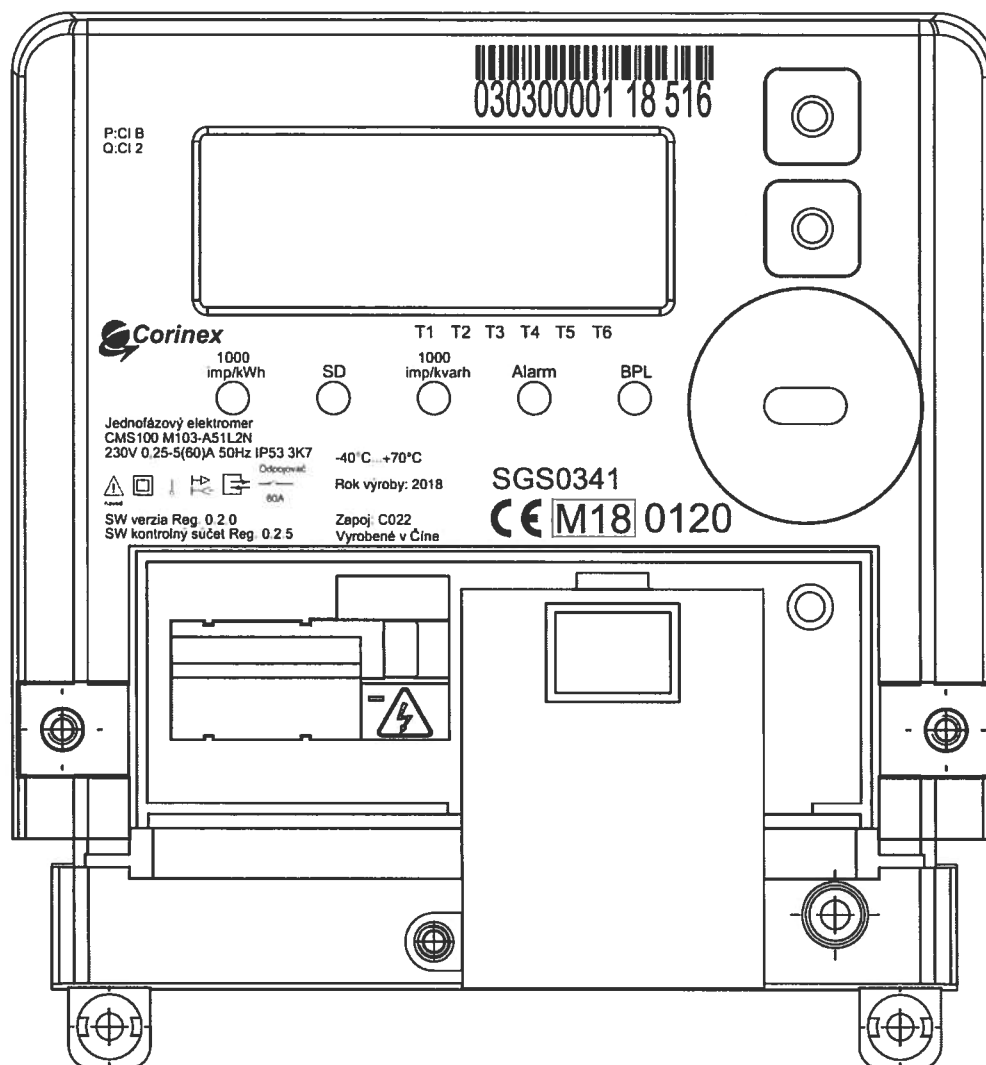


# SGS

EU-Type Examination Certificate Number:

**0120/SGS0341**

Issue Number: 3

Dated: 27<sup>th</sup> June 2018

Registre

1.8.0\*vw

Činný odber

1.8.2\*vw


Činný odber VT

1.8.3\*vw

Činný odber NT

R1 ○ ○ R2

Výrobca:  
CORINEX COMMUNICATIONS a.s.,  
Nove Zahrady I. 13/A,  
82105 Bratislava, Slovensko

	EU-Type Examination Certificate Number:	
	<b>0120/SGS0341</b>	
	Issue Number: 3	Dated: 27 <sup>th</sup> June 2018

#### 4. Calculation of the composite error/ MPE

During the type approval examination the influence factors for temperature, frequency and voltage are determined per load point. The table below represents the sum of the square values per load, determined via the following formula:-

$$\delta e(T, U, f) = \sqrt{(\delta e^2(T, I, \cos\phi) + \delta e^2(U, I, \cos\phi) + \delta e^2(f, I, \cos\phi))}$$


where

$\delta e(T, I, \cos\phi)$  = Additional error due to variation of the temperature at the same load

$\delta e(U, I, \cos\phi)$  = Additional error due to variation of the voltage at the same load

$\delta e(f, I, \cos\phi)$  = Additional error due to variation of the frequency at the same load

		Influence Factors for temperature, frequency and voltage							
Current	PF Cos	-40°C	-25°C	-10°C	5°C	30°C	40°C	55°C	70°C
I <sub>min</sub>	1.0	0.22	0.18	0.13	0.12	0.12	0.12	0.12	0.12
I <sub>tr</sub>	1.0	0.18	0.14	0.09	0.07	0.07	0.07	0.07	0.07
10I <sub>tr</sub>	1.0	0.17	0.11	0.06	0.04	0.02	0.03	0.03	0.04
I <sub>max</sub>	1.0	0.11	0.09	0.09	0.07	0.06	0.07	0.11	0.15
I <sub>tr</sub>	0.5ind	0.19	0.16	0.16	0.15	0.15	0.15	0.15	0.15
10I <sub>tr</sub>	0.5ind	0.14	0.09	0.05	0.02	0.02	0.02	0.02	0.02
I <sub>max</sub>	0.5ind	0.07	0.05	0.04	0.04	0.08	0.10	0.15	0.14
I <sub>tr</sub>	0.8cap	0.14	0.10	0.09	0.08	0.08	0.08	0.08	0.08
10I <sub>tr</sub>	0.8cap	0.14	0.09	0.04	0.02	0.01	0.02	0.01	0.02
I <sub>max</sub>	0.8cap	0.09	0.08	0.05	0.04	0.05	0.07	0.11	0.15

	EU-Type Examination Certificate Number:	
	<b>0120/SGS0341</b>	
	Issue Number: 3	Dated: 27 <sup>th</sup> June 2018


## 5. Annex of Variants

Product Variant Identification Details:

Type Designation	Description of meter
CMS100 M1	
01	5(80)A
02	5(100)A
03	5(60)A
A	1000imp/kWh
B	10000imp/kWh
1	100V
2	110V
3	120V
4	220V
5	230V
6	240V
1	50Hz
2	60Hz (IEC only)
N	without anti-magnetic
M	with anti-magnetic

Modifications to the meter(s) described according to approval No.**0120/SGS0341** must be notified to the issuing body to confirm the meter(s) continuing compliance to the relevant pattern approval standard(s).



	EU-Type Examination Certificate Number:	
	<b>0120/SGS0341</b>	
	Issue Number: 3	Dated: 27 <sup>th</sup> June 2018

## 6. Document Revision History

Issue	Date	Comments
1	15/01/2018	Initial Issue
2	15/06/2018	Additional nameplate. Updated meter variant code.
3	27/06/2018	Nameplate replaced.

This document is issued by the Company subject to its General Conditions for Certification Services, available on request or accessible at <http://www.sgs.com/en/Terms-and-Conditions.aspx>.

Attention is drawn to the limitation of liability, indemnification and jurisdiction issues defined therein. Any holder of this document is advised that information contained hereon reflects the Company's findings at the time of its intervention only and within the limits of Client's instructions, if any. The Company's sole responsibility is to its Client and this document does not exonerate parties to a transaction from exercising all their rights and obligations under the transaction documents. This document cannot be reproduced except in full, without prior written approval of the Company. Any unauthorized alteration, forgery or falsification of the content or appearance of this document is unlawful and offenders may be prosecuted to the fullest extent of the law.

Unless otherwise stated the results shown in this test report refer only to the sample(s) tested *and such sample(s) are retained for 28 days only*.

**END OF CERTIFICATE**