



Public Health
England

Protecting and improving the nation's health

Suspected and laboratory confirmed reported norovirus outbreaks in hospitals (England) and norovirus laboratory reports (England and Wales): weeks 31 to 35, 2019

Health Protection Report
Volume 13 Number 32
16 September 2019

Suspected and laboratory confirmed reported norovirus outbreaks in hospitals: outbreaks occurring in weeks 31 to 35, 2019 (England)

There was one reported outbreak which occurred between weeks 31 and 35 2019, it did not lead to a ward/bay closure or a restriction to admissions and was recorded as laboratory confirmed due to norovirus. From week 01 (week beginning 31 December 2018) to week 35 (week beginning 26 August 2019), 134 outbreaks have been reported. Ninety-seven percent (130) of reported outbreaks resulted in ward/bay closures or restrictions to admissions and seventy-six per cent (102) were laboratory confirmed as due to norovirus.

Suspected and laboratory-confirmed reported norovirus outbreaks in hospitals in England, with regional breakdown: outbreaks occurring in weeks 01-35 2019

PHE Centre	Outbreaks between weeks 31-35/2019*			Outbreaks between weeks 01-35/2019		
	Outbreaks	Ward/bay closure †	Lab confirmed	Outbreaks	Ward/bay closure †	Lab confirmed
East of England						
East Midlands				14	14	8
London						
North East				18	15	15
North West				25	25	19
South East				29	29	27
South West				20	20	17
West Midlands	1	0	1	21	20	9
Yorkshire and Humberside				7	7	7
Total	1	0	1	134	130	102

† Note: not all outbreaks result in whole wards closures, some closures are restricted to bays only

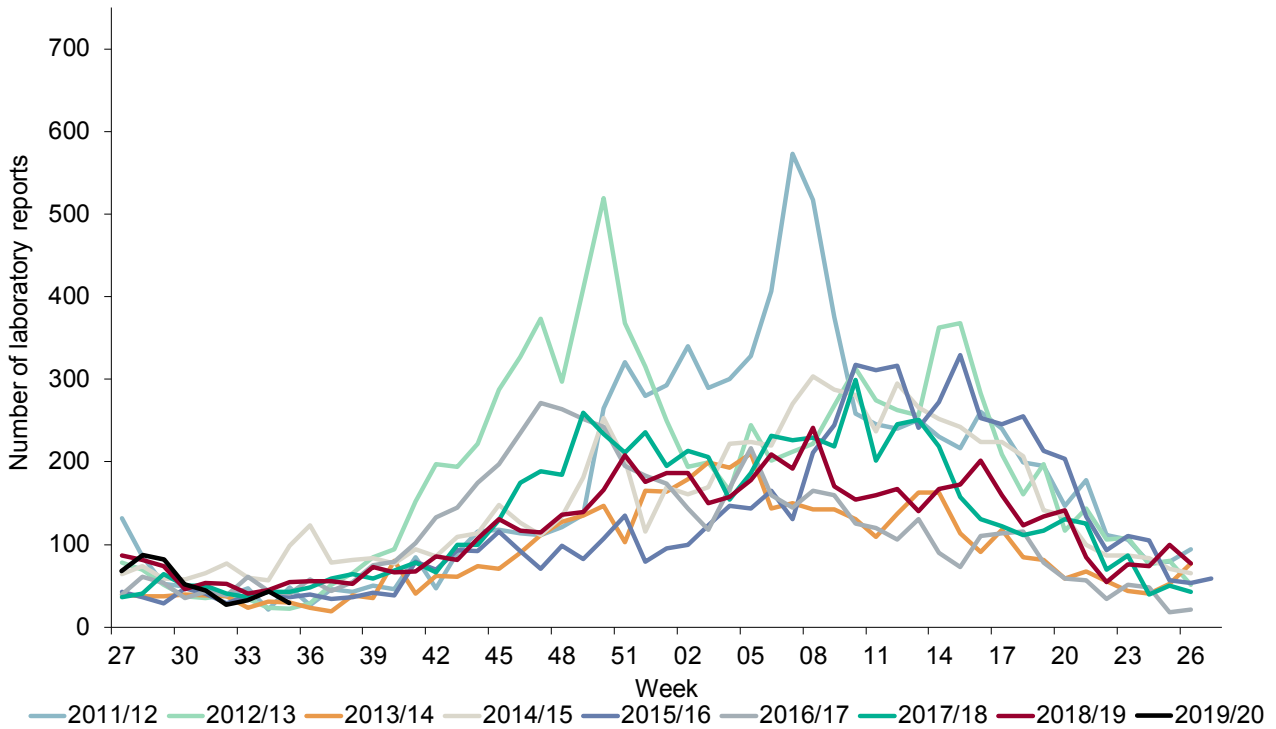
* Please note that the Hospital Norovirus Outbreak Reporting System is currently offline, therefore data on hospital outbreaks has been manually collated so may be incomplete and subject to updating at a later date.

Norovirus laboratory reporting: data from SGSS (England and Wales)

From week 01, 2019 to week 35 2019 there were 4319 laboratory reports of norovirus. This is lower than the average number of laboratory reports for the same period in the five years between 2014 and 2018 (4792). Norovirus activity from weeks 31 to 35 of the 2019/20 season was lower than the 5 season average for this four week period (2014/15 to 2018/19).

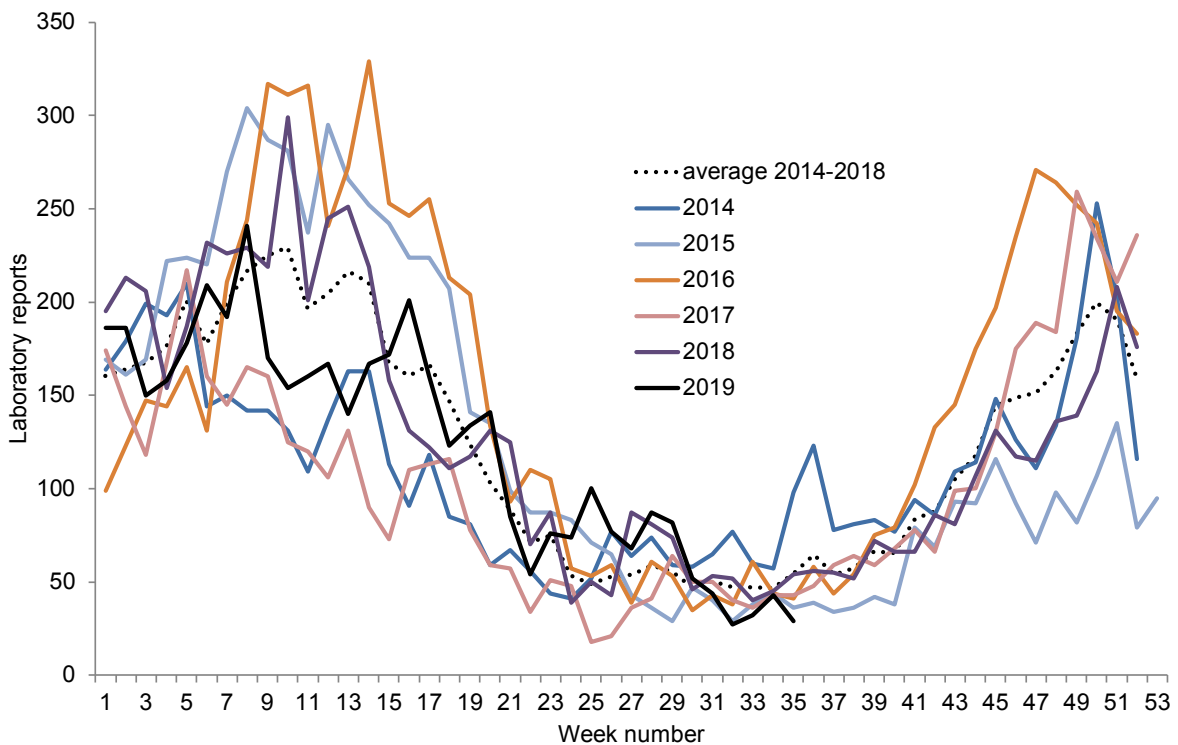
Note: Data from laboratory reporting are subject to a reporting delay and the number reported in the most recent weeks is likely to rise as further laboratory reports are received.

Fig 1 Seasonal comparison of laboratory reports of norovirus 2011/12-2019/20 (E&W)



Note. The norovirus season runs from week 27 in year 1 to week 26 in year 2, i.e. week 27 2019 – week 26 2020 July to June, in order to capture the winter peak in one season.

Fig 2: Current weekly norovirus laboratory reports compared to weekly mean reports 2014-2019 (E&W)



About Public Health England

Public Health England exists to protect and improve the nation's health and wellbeing, and reduce health inequalities. We do this through world-class science, knowledge and intelligence, advocacy, partnerships and the delivery of specialist public health services. We are an executive agency of the Department of Health, and are a distinct delivery organisation with operational autonomy to advise and support government, local authorities and the NHS in a professionally independent manner.

About Health Protection Report

Health Protection Report is a national public health bulletin for England and Wales, published by Public Health England. It is PHE's principal channel for the dissemination of laboratory data relating to pathogens and infections/communicable diseases of public health significance and of reports on outbreaks, incidents and ongoing investigations.

Public Health England, Wellington House, 133-155 Waterloo Road, London SE1 8UG
Tel: 020 7654 8000 www.gov.uk/phe
[Twitter: @PHE_uk](https://twitter.com/PHE_uk) Facebook: www.facebook.com/PublicHealthEngland

Queries relating to this document should be directed to:
noroOBK@phe.gov.uk

© Crown copyright 2019

You may re-use this information (excluding logos) free of charge in any format or medium, under the terms of the Open Government Licence v3.0. To view this licence, visit [OGL](https://www.ogcl.gov.uk) or email psi@nationalarchives.gsi.gov.uk. Where we have identified any third party copyright information you will need to obtain permission from the copyright holders concerned.

Published: **September 2019**

PHE publications
gateway number: **2019091**

PHE supports the UN
Sustainable Development Goals

