



EU Type Examination Certificate Number: **0120/SGS0196**

Autometers Systems Ltd

4B Albany Road
Manchester
M21 0AW
United Kingdom.

Instrument Identification:

A-35M

Poly Phase, Active Import/Export, Indoor, Multi-Function, Transformer Operated, Electricity Meter

HT-35

Poly Phase, Active Import/Export, Indoor, Multi-Function, Multi-tariff, Transformer Operated, Electricity Meter

Instrument Traceable Number

0120/SGS0196

has been assessed and certified as meeting the requirements of

EU Directive 2014/32/EU

on Measuring Instruments Annex II, Module B

It is certified that the manufacturer's technical design and specimen for the above instrument has been examined and, based on the evidence submitted, it is considered that the instrument conforms to the requirements of Annex V of EU Directive 2014/32/EU

This certificate must be used in conjunction with a certificate covering the product verification as required in Annex II, Module D or Annex II, Module F


This certificate is valid 9th March 2024
Issue 2

Certification is based on report number(s) EMA174647/1/MID dated 30th January 2014
EMA206567/1 dated 7th July 2015

Authorised Signature


SGS United Kingdom Limited, Notified Body 0120
Unit 202B Worle Parkway, Weston-super-Mare, BS22 6WA, UK
t +44 (0)1934 522917 f +44 (0)1934 522137 www.sgs.com

Contact Address
SGS United Kingdom Limited, Units 12A & 12B, South Industrial Estate, Bowburn, Durham, DH6 5AD, UK
t +44 (0)191 377 2000 f +44 (0)191 377 2020 www.sgs.com

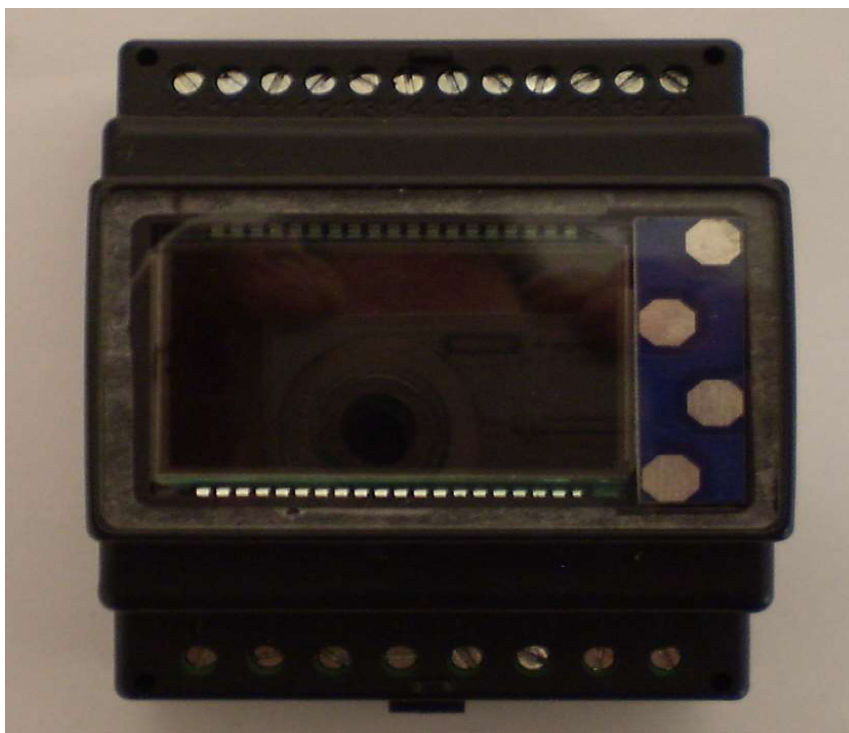
	EU-Type Examination Certificate Number:	
	0120/SGS0196	
	Issue Number: 2	Dated: 3 rd July 2019


1. Technical Data

Manufacturer	Autometers Systems Ltd	
Meter Type	A-35M & HT-35	
Voltage Rating (U_n)	3x230/400V	
Current Rating ($I_{min} - I_{ref} (I_{max})$)	0.25-5(6)A	
Frequency (F_n)	50Hz	
Active Accuracy Class (kWh)	A or B (kWh)	
Type of circuit	3p4w, 3p3w, 1p2w	
Temperature Range	-25°C to +55°C	
Software/ Firmware Version No CRC Checksum Identification Location	A-35M	HT-35
	V1.3	V1.6
	0x0000D5C8	0x005C9E86
Identification Location	Nameplate	Nameplate
Bill Of Materials Number	SDM630-1-L-V1.5 SDM630-1-BOT-V1.5 SDM630-1-TOP-V1.5 SDM630-1-KEY-V1.0 SDM630-1-R-V1.5	DH-JS-190004-1.1
IP Rating	IP51	
Insulation Protective Class	Class II	
LED Pulse Constant	3200imp/ kWh	
Impulse Voltage Rating	6kV	
AC Voltage Rating	4kV	
Main Cover Sealing Type	2 x Wire & Crimp	
Integrity of meter	Inaccessible without breaking seals	
Intended Location of the Meter	Indoor	
Type of Register	LCD	
Terminal Arrangement(s)	DIN	
Location of Manufacturers Address	Side of meter	

	EU-Type Examination Certificate Number:	
	0120/SGS0196	
	Issue Number: 2	Dated: 3 rd July 2019

2. Photograph of Meter and Sealing Plan



	EU-Type Examination Certificate Number:	
	0120/SGS0196	
	Issue Number: 2	Dated: 3 rd July 2019


4. Calculation of the composite error/ MPE

During the type approval examination the influence factors for temperature, frequency and voltage are determined per load point. The table below represents the sum of the square values per load, determined via the following formula:-


$$\delta e(T, U, f) = \sqrt{(\delta e^2(T, I, \cos\phi) + \delta e^2(U, I, \cos\phi) + \delta e^2(f, I, \cos\phi))}$$

where

$\delta e(T, I, \cos\phi)$	=	Additional error due to variation of the temperature at the same load
$\delta e(U, I, \cos\phi)$	=	Additional error due to variation of the voltage at the same load
$\delta e(f, I, \cos\phi)$	=	Additional error due to variation of the frequency at the same load

	EU-Type Examination Certificate Number:	
	0120/SGS0196	
	Issue Number: 2	Dated: 3 rd July 2019

		Influence Factors for Temperature. Frequency & Voltage					
Current	PF Cos	-25°C	-10°C	5°C	30°C	40°C	55°C
I _{min}	1.0	0.39	0.30	0.71	0.16	0.25	0.39
I _{tr}	1.0	0.33	0.27	0.28	0.18	0.25	0.47
10I _{tr}	1.0	0.35	0.31	0.24	0.22	0.29	0.49
I _{max}	1.0	0.36	0.31	0.25	0.21	0.28	0.47
I _{tr}	0.5ind	0.26	0.25	0.36	0.16	0.23	0.44
10I _{tr}	0.5ind	0.38	0.34	0.29	0.27	0.34	0.52
I _{max}	0.5ind	0.42	0.38	0.32	0.30	0.36	0.52
I _{tr}	0.8cap	0.31	0.42	0.43	0.32	0.37	0.50
10I _{tr}	0.8cap	0.32	0.27	0.21	0.17	0.26	0.45
I _{max}	0.8cap	0.34	0.28	0.21	0.15	0.24	0.43
L1							
I _{tr}	1.0	0.37	0.39	0.44	0.14	0.28	0.35
10I _{tr}	1.0	0.34	0.30	0.24	0.20	0.27	0.47
I _{max}	1.0	0.33	0.30	0.23	0.21	0.28	0.47
I _{tr}	0.5ind	0.41	0.56	0.96	0.14	0.15	0.16
10I _{tr}	0.5ind	0.49	0.46	0.42	0.38	0.43	0.62
I _{max}	0.5ind	0.49	0.46	0.42	0.39	0.44	0.60
L2							
I _{tr}	1.0	0.25	0.20	0.12	0.18	0.31	0.51
10I _{tr}	1.0	0.38	0.32	0.23	0.19	0.28	0.45
I _{max}	1.0	0.38	0.32	0.23	0.21	0.28	0.47
I _{tr}	0.5ind	0.12	0.12	0.13	0.25	0.38	0.59
10I _{tr}	0.5ind	0.36	0.33	0.25	0.25	0.32	0.49
I _{max}	0.5ind	0.39	0.35	0.28	0.27	0.34	0.49
L3							
I _{tr}	1.0	0.32	0.27	0.21	0.19	0.27	0.46
10I _{tr}	1.0	0.32	0.28	0.22	0.21	0.30	0.50
I _{max}	1.0	0.33	0.30	0.23	0.22	0.30	0.50
I _{tr}	0.5ind	0.32	0.32	0.24	0.20	0.29	0.53
10I _{tr}	0.5ind	0.34	0.29	0.23	0.23	0.33	0.54
I _{max}	0.5ind	0.35	0.31	0.25	0.13	0.33	0.53


	EU-Type Examination Certificate Number:	
	0120/SGS0196	
	Issue Number: 2	Dated: 3 rd July 2019

5. Annex of Variants

Product Variant Identification Details:

Type Designation	Description of meter
A-35M	0.25-5(6)A – Poly Phase, Active Import/Export kWh, Multifunction, Transformer Operated, Electricity Meter
HT-35	0.25-5(6)A – Poly Phase, Active Import/Export kWh, Multifunction, Transformer Operated, Electricity Meter, Multi tariff

Modifications to the meter(s) described according to approval No.**0120/SGS0196** must be notified to the issuing body to confirm the meter(s) continuing compliance to the relevant pattern approval standard(s).

	EU-Type Examination Certificate Number:	
	0120/SGS0196	
	Issue Number: 2	Dated: 3 rd July 2019

6. Document Revision History

Issue	Date	Comments
1	07/07/2015	Initial Issue
2	03/07/2019	Updated directive reference to "2014/32/EU" and HT-35 variant added to approval

This document is issued by the Company subject to its General Conditions for Certification Services, available on request or accessible at <http://www.sgs.com/en/Terms-and-Conditions.aspx>.

Attention is drawn to the limitation of liability, indemnification and jurisdiction issues defined therein. Any holder of this document is advised that information contained hereon reflects the Company's findings at the time of its intervention only and within the limits of Client's instructions, if any. The Company's sole responsibility is to its Client and this document does not exonerate parties to a transaction from exercising all their rights and obligations under the transaction documents. This document cannot be reproduced except in full, without prior written approval of the Company. Any unauthorized alteration, forgery or falsification of the content or appearance of this document is unlawful and offenders may be prosecuted to the fullest extent of the law.

Unless otherwise stated the results shown in this test report refer only to the sample(s) tested *and such sample(s) are retained for 28 days only*.

END OF CERTIFICATE