



EU Type Examination Certificate Number: **0120/ SGS0004/R1**

Landis + Gyr Ltd

1 Lysander Drive
Northfields Industrial Estate
Market Deeping
Peterborough
PE6 8FB

Instrument Identification:
5236* & 5236*-Y

Single Phase, Multi-rate, Import/ Export, Credit/ Pre-payment, Electricity Meter

Instrument Traceable Number
0120/ SGS0004

has been assessed and certified as meeting the requirements of

EU Directive 2014/32/EU **on Measuring Instruments Annex II, Module B**

It is certified that the manufacturer's technical design and specimen for the above instrument has been examined and, based on the evidence submitted, it is considered that the instrument conforms to the requirements of Annex V of EU Directive 2014/32/EU

This certificate must be used in conjunction with a certificate covering the product verification as required in Annex II, Module D or Annex II, Module F


This certificate is valid for 10 years from 31st August 2017 until 30th August 2027
Issue 1

Certification is based on report number(s) EMA107158/ 1 dated 31st August 2007
EMA123587/ 1 dated 3rd February 2009, EMA127198 dated 31st July 2009
EMA255203/1 dated 31st August 2017, EMA255203/1/50579 dated 31st August 2017

Authorised Signature


SGS United Kingdom Limited, Notified Body 0120
Unit 202B Worle Parkway, Weston-super-Mare, BS22 6WA, UK
t +44 (0)1934 522917 f +44 (0)1934 522137 www.sgs.com

Contact Address
SGS United Kingdom Limited, Units 12A & 12B, South Industrial Estate, Bowburn, Durham, DH6 5AD, UK
t +44 (0)191 377 2000 f +44 (0)191 377 2020 www.sgs.com

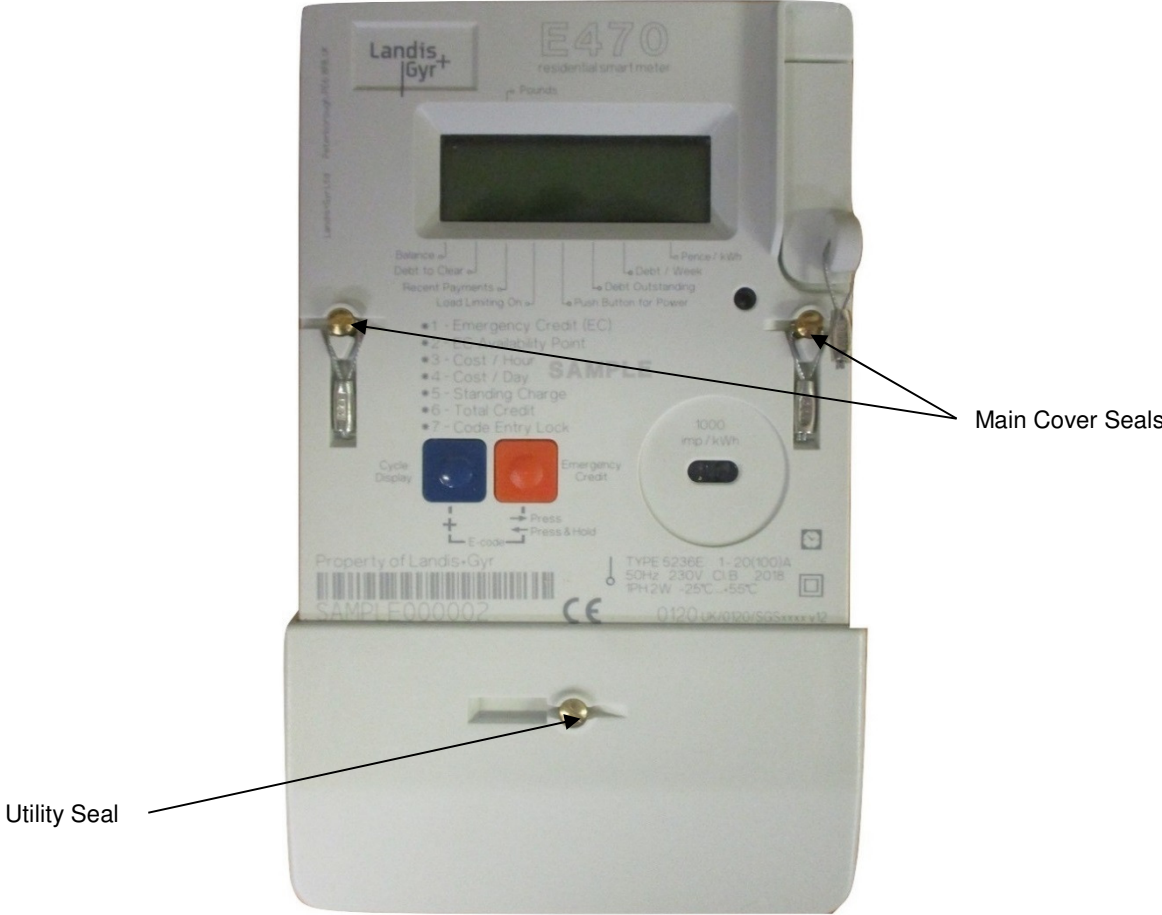
	EU-Type Examination Certificate Number:	
	0120/ SGS0004/R1	
	Issue Number: 1	Dated:31 st August 2017


1. Technical Data

Manufacturer	Landis + Gyr Ltd
Meter Type	5236* & 5236*-Y
Voltage Rating (U_n)	220-240V
Current Rating (I_{min} – I_{ref} (I_{max}))	0,5-10(100)A, 0,75-15(100)A, 1-20(100)A
Frequency (F_n)	50Hz
Active Accuracy Class (kWh)	A or B (kWh)
Type of circuit	1p2w
Temperature Range	-25°C to +55°C
Software/ Firmware Version No's	01.02, 02.01 12.44, 12.74,12.79
CRC Checksum	0x00E17252
Identification Location	LCD
Bill Of Materials Number(s)	5236045– Rev03, 5236046– Rev03 5236047– Rev03, 5236058– Rev01 5236059– Rev01, 5236063– Rev01 5236068– Rev01, 5236069– Rev01
IP Rating	IP51
Insulation Protective Class	Class II
LED Pulse Constant	1000imp/ kWh
Impulse Voltage Rating	6kV
AC Voltage Rating	4kV
Main Cover Sealing Type	2 x Wire & Crimp
Integrity of meter	Inaccessible without breaking seals
Intended Location of the Meter	Indoor
Type of Register	LCD
Terminal Arrangement(s)	BS
Location of Manufacturers Address	Nameplate

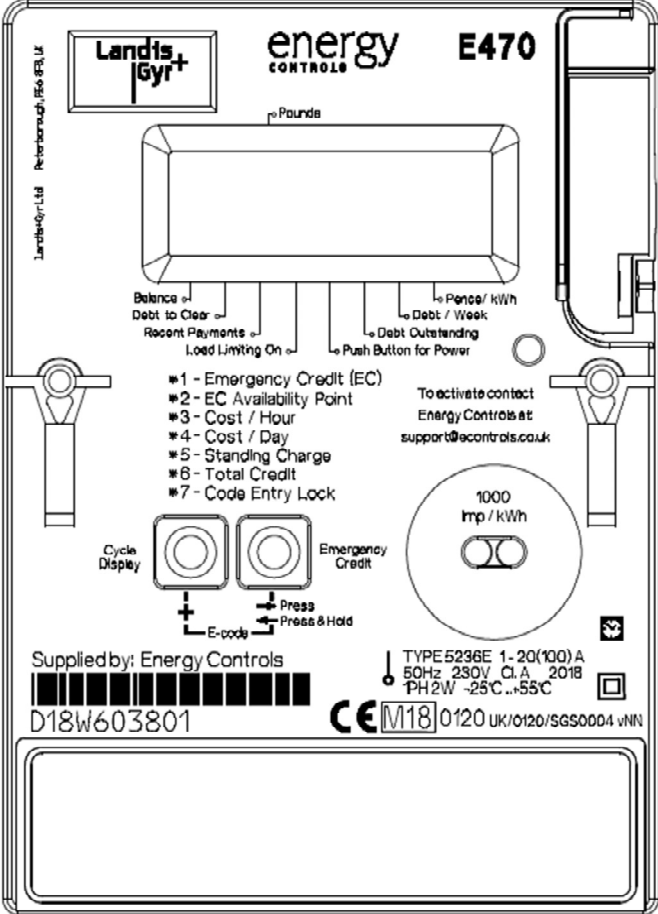
	EU-Type Examination Certificate Number:	
	0120/ SGS0004/R1	
	Issue Number: 1	Dated: 31 st August 2017


2. Photograph of Meter and Sealing Plan



	EU-Type Examination Certificate Number:	
	0120/ SGS0004/R1	
	Issue Number: 1	Dated: 31 st August 2017

3. Example of Nameplate



	EU-Type Examination Certificate Number:	
	0120/ SGS0004/R1	
	Issue Number: 1	Dated:31 st August 2017

4. Calculation of the composite error/ MPE


During the type approval examination the influence factors for temperature, frequency and voltage are determined per load point. The table below represents the sum of the square values per load, determined via the following formula:-

$$\delta e (T, U, f) = \sqrt{(\delta e^2 (T, I, \cos\phi) + \delta e^2 (U, I, \cos\phi) + \delta e^2 (f, I, \cos\phi))}$$

where

$\delta e(T, I, \cos\phi)$ = Additional error due to variation of the temperature at the same load
 $\delta e(U, I, \cos\phi)$ = Additional error due to variation of the voltage at the same load
 $\delta e(f, I, \cos\phi)$ = Additional error due to variation of the frequency at the same load

Current	PF Cos	-25°C	-10°C	5°C	30°C	40°C	55°C
I _{min}	1.0	0.18	0.10	0.09	0.05	0.07	0.07
I _{tr}	1.0	0.14	0.08	0.05	0.01	0.01	0.02
10I _{tr}	1.0	0.35	0.25	0.12	0.02	0.06	0.09
I _{max}	1.0	0.50	0.40	0.33	0.25	0.23	0.22
I _{tr}	0.5ind	0.07	0.05	0.06	0.04	0.07	0.11
10I _{tr}	0.5ind	0.25	0.16	0.12	0.05	0.05	0.05
I _{max}	0.5ind	0.35	0.29	0.25	0.17	0.17	0.22
I _{tr}	0.8cap	0.17	0.10	0.07	0.05	0.04	0.03
10I _{tr}	0.8cap	0.33	0.21	0.11	0.02	0.07	0.13
I _{max}	0.8cap	0.40	0.28	0.18	0.08	0.06	0.05


	EU-Type Examination Certificate Number:	
	0120/ SGS0004/R1	
	Issue Number: 1	Dated:31 st August 2017

5. Annex of Variants

Product Variant Identification Details:

Type Designation	Description of meter
5236E	Single phase, Multi Rate, Active Import/Export, SMS, Credit/Pre-Payment Electricity Meter
5236E-Y	Single phase, Multi Rate, Active Import/Export, SMS, Credit/Pre-Payment Electricity Meter With added low power radio
5236J	Single phase, Multi Rate, Active Import/Export, SMS, Credit/Pre-Payment Electricity Meter
5236J- Y	Single phase, Multi Rate, Active Import/Export, SMS, Credit/Pre-Payment Electricity Meter With added low power radio

Modifications to the meter(s) described according to approval No.**0120/ SGS0004** must be notified to the issuing body to confirm the meter(s) continuing compliance to the relevant pattern approval standard(s).

	EU-Type Examination Certificate Number:	
	0120/ SGS0004/R1	
	Issue Number: 1	Dated:31 st August 2017

6. Document Revision History

Issue	Date	Comments
1	31/07/2017	Recertification initial Issue

This document is issued by the Company subject to its General Conditions for Certification Services, available on request or accessible at <http://www.sgs.com/en/Terms-and-Conditions.aspx>.

Attention is drawn to the limitation of liability, indemnification and jurisdiction issues defined therein. Any holder of this document is advised that information contained hereon reflects the Company's findings at the time of its intervention only and within the limits of Client's instructions, if any. The Company's sole responsibility is to its Client and this document does not exonerate parties to a transaction from exercising all their rights and obligations under the transaction documents. This document cannot be reproduced except in full, without prior written approval of the Company. Any unauthorized alteration, forgery or falsification of the content or appearance of this document is unlawful and offenders may be prosecuted to the fullest extent of the law.

Unless otherwise stated the results shown in this test report refer only to the sample(s) tested *and such sample(s) are retained for 28 days only*.

END OF CERTIFICATE