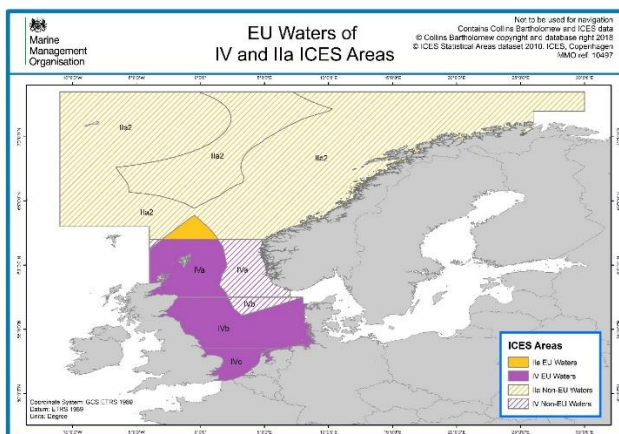




Fishing gear requirements and Landing Obligation exemptions 2019

Applicable to Nephrops trawls
Fishing in the North Sea



Introduction

This document explains rules on the fishing gear you should be using in the North Sea when fishing for Nephrops. It also summarises which Landing Obligation exemptions are available to you.

This guidance is for all sizes of fishing vessel (including those under 10 metres). It does not cover IFCA byelaws – please consult your local IFCA for further information.

General fishing gear rules:

- All mesh sizes given in this document are minimum sizes. You can choose to use a larger mesh than that stated.



Marine Management Organisation

- The baseline mesh size in this area is now a 120mm codend and this must be used where catches exceed 20% of cod haddock and saithe combined.
- Twine thickness requirements are 5mm maximum for double twine and 8mm maximum for single twine codends.
- If you have a catch of less than 20% of cod, haddock and saithe combined, then you may use a mesh size below 120mm as specified below:

Gear selectivity requirements

All mesh sizes specified are the minimum.

ICES Area	Standard gears
Farne Deeps: ICES rectangles: 38E8, 38E9, 39E8, 39E9, 40E8, 40E9	See licence condition for full details Single rig trawls – 90mm codend Twin rig trawls – 95mm codend (fishing inside 12nm prohibited) and one of: 1. 120mm square mesh panel 2. Sorting grid with maximum bar spacing of 35mm
Outside the Farne deps area.	80mm codend and one of: 1. 120 mm square mesh panel 2. Sorting grid with maximum bar spacing of 35mm <u>UK Fishing Vessels</u> working North of 53°N using a codend of less than 95mm can only use single rig



Landing Obligation exemptions

In the table below is a brief summary of exemptions from the Landing Obligation for this fishery which allows you to discard fish. All quantities of fish discarded under the Landing Obligation must be recorded in your logbook, but will not come off your quota.

Please read the relevant [landing obligation guidance](#) for further information.

Fish Species you can Discard	ICES Area	Conditions
Skates and Rays	IIa and IV	No Conditions
Nephrops	IIa and IV	No Conditions
Whiting below the minimum size of 27cm	IV	Codend mesh size of 80 mm to 99 mm.
Cod below the minimum size of 35cm	IV	Codend mesh size of 80 mm to 99 mm.
Plaice below the minimum size of 27cm	IV	Codend mesh size of 80 mm to 99 mm. Use of Separator Trawl mandatory.