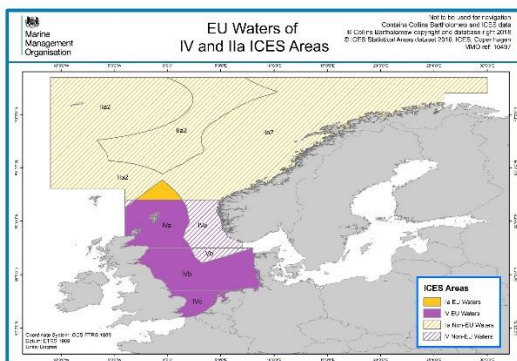




# Fishing Gear requirements and Landing Obligation exemptions 2019

Applicable to Gill Net, Trammel Net and Drift Net  
Fishing in the North Sea



## Introduction

This document explains rules on which fishing gear you should be using in the North Sea. It also summarises which Landing Obligation exemptions are available to you.

This guidance is for all sizes of fishing vessel (including those under 10 metres). It does not cover IFCA byelaws – please consult your local IFCA for further information.

### General fishing gear rules:

- All mesh sizes given in this document are minimum sizes. You can choose to use a larger mesh than that stated.
- The baseline mesh size in this area is now a 120mm codend and this must be used where catches exceed 20% of cod haddock and saithe combined.



# Marine Management Organisation

- If you have a catch of less than 20% of cod, haddock and saithe combined, then you may use a mesh size below 120mm as specified below:

## Gear selectivity requirements

All mesh sizes specified are the minimum.

Fishery	Conditions
Haddock, whiting, dab, and bass ( <a href="#">link to 2019 bass guidance on gov.uk</a> )	100mm mesh
Flatfish or any non-TAC species	90mm mesh
Pelagic species	50mm mesh

## Landing Obligation exemptions

In the table below is a brief summary of exemptions from the Landing Obligation for these fisheries which allow you to discard fish. All quantities of fish discarded under the Landing Obligation must be recorded in your logbook, but will not come off your quota. We recommend that you also read the relevant [landing obligation guidance](#) for further information.

Fish Species you can Discard	ICES Area	Conditions (Type of Fishing Net)
Skates and Rays	IIa and IV	Gill, Trammel and Drift Nets
Dover Sole (SOL)	IIa and IV	Gill, Trammel and Drift Nets
Plaice (PLE)	IV	Gill and Trammel Nets