

Construction noise and vibration Monthly Report – June 2019

South Bucks District

Non-technical summary	1
Abbreviations and descriptions	2
1 Introduction	3
1.2 Measurement Locations	3
2 Summary of results	4
2.1 Exceedances of SOAEL	4
2.2 Summary of measured noise levels	5
2.3 Exceedances of trigger level	7
2.4 Complaints	7
Appendix A Site Locations	8
Appendix B Monitoring Locations	10
Appendix C Data	12

List of tables

Table 1: Table of abbreviations	2
Table 2: Monitoring locations	4
Table 3: Summary of exceedances of SOAEL.	4
Table 4: Summary of measured dB L_{Aeq} data over the monitoring period.	6
Table 5: Summary of exceedances of trigger levels.	7
Table 6: Summary of complaints.	7

Non-technical summary

This noise and vibration monitoring report fulfils HS2 Limited's commitment detailed in the Environmental Minimum Requirements (EMRs), Annex 1, Code of Construction Practice, to present the results of noise and vibration monitoring carried out within the South Bucks District (SBD) during the month of June 2019.

The report presents data from a noise monitoring installation in the vicinity of the load test pile worksite. Works included the removal of piling equipment, the clearing of trees and the testing of load piles. Details of works undertaken are presented in the report.

Due to the proximity of the site to the A412, the ambient noise levels are considered to be largely dominated by road traffic. In addition, due to the monitor being located on-site in close proximity to the site compound and site entrance, ambient levels at the monitoring location will also be influenced by the worksite activity.

One noise monitor was active in the SBD area in June 2019. The noise monitor was originally located at the on-site location NMP1, and was subsequently moved to a new location along the site boundary (NMP2) on Friday 7th of June.

No exceedances of the SOAEL and no exceedances of S61 trigger levels due to HS2 related works were measured during the monitoring period. No complaints were reported to HS2 for the South Buckinghamshire region during the June monitoring period.

Abbreviations and descriptions

The abbreviations, descriptions and project terminology used within this report can be found in the Project Dictionary (HS2-HS2-PM-GDE-000-000002).

Table 1: Table of abbreviations

Acronym/Term	Definition
$L_{Aeq,T}$	See equivalent continuous sound pressure level
Ambient sound	A description of the all-encompassing sound at a given location and time which will include sound from many sources near and far. Ambient sound can be quantified in terms of the equivalent continuous sound pressure level, $L_{pAeq,T}$
Decibel(s), or dB	Between the quietest audible sound and the loudest tolerable sound there is a million to one ratio in sound pressure (measured in Pascal (Pa)). Because of this wide range, a level scale called the decibel (dB) scale, based on a logarithmic ratio, is used in sound measurement. Audibility of sound covers a range of approximately 0-140dB.
Decibel(s) A-weighted, or dB(A)	The human ear system does not respond uniformly to sound across the detectable frequency range and consequently instrumentation used to measure sound is weighted to represent the performance of the ear. This is known as the 'A weighting' and is written as 'dB(A)'.
Equivalent continuous sound pressure level, or $L_{pAeq,T}$	An index used internationally for the assessment of environmental sound impacts. It is defined as the notional unchanging level that would, over a given period of time (T), deliver the same sound energy as the actual time-varying sound over the same period. Hence fluctuating sound levels can be described in terms of an equivalent single figure value, typically expressed as a decibel level.
Façade	A facade noise level is the noise level 1m in front of a large reflecting surface. The effect of reflection, is to produce a slightly higher (typically +2.5 to +3 dB) sound level than it would be if the reflecting surface was not there.
Free-field	A free-field noise level is the noise level measured at a location where no reflective surfaces, other than the ground, lies within 3.5 metres of the microphone position.
Exclusion of data	Measurement of noise levels can be affected by weather conditions such as prolonged periods of rain, winds speeds higher than 5m/s and snow/ice ground cover. Noise levels measured during these periods are considered not representative of normal noise conditions at the site and, for the purposes of this report, are excluded from the assessment of exceedances and calculation of typical noise levels and are also greyed out in charts. Identifiable incongruous noise and vibration events not attributable to HS2 construction noise are also excluded.
Equivalent continuous sound pressure level, or $L_{Aeq,T}$	An index used internationally for the assessment of environmental sound impacts. It is defined as the notional unchanging level that would, over a given period of time (T), deliver the same sound energy as the actual time-varying sound over the same period. Hence fluctuating sound levels can be described in terms of an equivalent single figure value, typically expressed as a decibel level.
Peak particle velocity, or PPV	Instantaneous maximum velocity reached by a vibrating element as it oscillates about its rest position. The PPV is a simple indicator of perceptibility and risk of damage to structures due to vibration. It is usually measured in mm/s.
Sound pressure level	The parameter by which sound levels are measured in air. It is measured in decibels. The threshold of hearing has been set at 0dB, while the threshold of pain is approximately 120dB. Normal speech is approximately 60dB at a distance of 1 metre and a change of 3dB in a time varying sound signal is commonly regarded as being just detectable. A change of 10dB is subjectively twice, or half, as loud.
Vibration dose value, or VDV	An index used to evaluate human exposure to vibration in buildings. While the PPV provides information regarding the magnitude of single vibration events, the VDV provides a measure of the total vibration experienced over a specified period of time (typically 16h daytime and 8h night-time). It takes into account the magnitude, the number and the duration of vibration events and can be used to quantify exposure to continuous, impulsive, occasional and intermittent vibration. The vibration dose value is measured in $m/s^{1.75}$.

1 Introduction

1.1.1 The nominated undertaker is required to undertake noise (and vibration) monitoring as necessary to comply with the requirements of the High Speed Rail (London-West Midlands) Environmental Minimum Requirements, including specifically Annex 1: Code of Construction Practice, in addition to any monitoring requirements arising from conditions imposed through consents under Section 61 of the Control of Pollution Act, 1974 or through Undertakings & Assurances given to third parties. Such monitoring may be undertaken for the following purposes:

- monitoring the impact of construction works;
- to investigate complaints, incidents and exceedance of trigger levels; or
- monitoring the effectiveness of noise and vibration control measures.

Monitoring data and interpretive reports are to be provided to each relevant local authority on a monthly basis and shall include a summary of the construction activities occurring, the data recorded over the monitoring period, any complaints received, any periods in exceedance of agreed trigger levels, the results of any investigations and any actions taken or mitigation measures implemented. This report provides noise data, and interpretation thereof, for monitoring carried out by HS2 within South Bucks District (SBD) area for the period 1st to 30th June 2019.

1.1.2 Active construction sites in the local authority area during this period include:

- Load Test Pile Site 1 ref. LTP #1 (see plan 1 in Appendix A)
 - Works activities include removal of piling equipment and cranes, delivery of tree clearing equipment and clearance of trees, delivery of testing piling equipment, load testing of pile including the operation of lighting set, compressor and mobile welfare unit, demobilisation of load test equipment and water monitoring equipment, installation of monitoring hole head works.

1.1.3 The applicable standards, guidance, and monitoring methodology is outlined in the construction noise and vibration monitoring methodology report which can be found at the following location <https://www.gov.uk/government/collections/monitoring-the-environmental-effects-of-hs2>. Noise and vibration monitoring reports for previous months can also be found at this location.

1.2 Measurement Locations

1.2.1 Table 2 summarises the positions of noise monitoring installations within the South SBD area in May 2019.

- 1.2.2 One noise monitor was active in the SBD area in June 2019. The noise monitor was originally located at the on-site location NMP1, and was subsequently moved to a new location along the site boundary (NMP2) on Friday 7th of June.
- 1.2.3 A map showing the position of noise monitoring installations are presented in Appendix B.

Table 2: Monitoring locations

Worksite Reference	Measurement Reference	Address
LTP #1	NMP1	Within worksite, north of Denham Water Ski Club
	NMP2	Along worksite northern boundary

2 Summary of results

2.1 Exceedances of SOAEL

- 2.1.1 The significant observed adverse effect level (SOAEL) is defined in the ‘Planning Practice Guidance – Noise’ as the level above which "noise causes a material change in behaviour and/or attitude, e.g. avoiding certain activities during periods of intrusion; where there is no alternative ventilation, having to keep windows closed most of the time because of the noise. Potential for sleep disturbance resulting in difficulty in getting to sleep, premature awakening and difficulty in getting back to sleep. Quality of life diminished due to change in acoustic character of the area."
- 2.1.2 Where construction noise levels exceed the SOAEL, relevant periods will be identified and summary statistics provided in order to evaluate ongoing qualification for noise insulation and temporary rehousing.
- 2.1.3 Table 3 presents a summary of recorded exceedances of the SOAEL due to HS2 related construction noise at each measurement location over the reporting period, including the number of exceedances during each time period. For this monitoring period no exceedances of the SOAEL were recorded.

Table 3: Summary of exceedances of SOAEL.

Worksite Reference	Measurement Reference	Site Address	Day (Weekday, Saturday, Sunday, Night)	Time period	Number of exceedances of SOAEL
LTP #1	NMP1	Within worksite, north of Denham Water Ski Club	All days	All periods	No exceedance

Worksite Reference	Measurement Reference	Site Address	Day (Weekday, Saturday, Sunday, Night)	Time period	Number of exceedances of SOAEL
	NMP2	Along worksite northern boundary	All days	All periods	No exceedance

2.1.4 HS2 main construction activities were undertaken between 08:00 and 18:00 on weekdays. Between 17th and 22nd of June working hours were extended to allow testing of the test pile, in accordance with S61 variation, with testing completed around 12:00 on Saturday 22nd of June.

2.2 Summary of measured noise levels

2.2.1 Table 4 presents a summary of the measured noise levels at each monitoring location over the reporting period. The $L_{Aeq,T}$ is presented for each of the relevant time periods averaged over the calendar month, along with the highest single period $L_{Aeq,T}$ that was found to occur within the month.

2.2.2 Appendix C presents graphs of the noise monitoring data over the month for the measurement location. Data presented includes the hourly L_{Aeq} values and, where relevant, the $L_{Aeq,T}$ values (where the time period T has been taken to be the averaging period as specified in Table 1 of HS2 Information Paper E23). The full data set for the monitoring equipment can be found at the following location:
<https://data.gov.uk/dataset/24542ae7-dd44-444f-b259-871c4cc43b5e/environmental-monitoring-data>.

2.2.3 As the worksite is located in proximity to the A412, the ambient noise levels are considered to be largely dominated by local road traffic, and road traffic from the M25, A40 and M40. During days where traffic is diverted away from the M25, local road traffic can increase along with associated noise levels. Given the nature and location of works currently being undertaken, the measured noise levels during the working periods are largely dominated by the underlying ambient noise levels, rather than being attributable to HS2 construction noise.

Table 4: Summary of measured dB L_{Aeq} data over the monitoring period.

Worksite Reference	Measurement Reference	Site Address	Free-field or Façade measurement	Weekday Average L _{Aeq,T} (highest day L _{Aeq,T})*					Saturday Average L _{Aeq,T} (highest day L _{Aeq,T})*					Sunday / Public Holiday Average L _{Aeq,T} (highest day L _{Aeq,T})*	
				0700 - 0800	0800 - 1800	1800 - 1900	1900 - 2200	2200 - 0700	0700 - 0800	0800 - 1300	1300 - 1400	1400 - 2200	2200 - 0700	0700 - 2200	2200 - 0700
LTP #1	NMP1	Within worksite, north of Denham Water Ski Club	Free-field	62.4 (63.2)	62.0 (62.5)	61.5 (62.2)	58.7 (61.1)	56.7 (62.7)	59.0 (59.0)	60.8 (60.8)	60.5 (60.5)	58.4 (59.4)	57.0 (60.1)	58.9 (60.8)	56.4 (62.9)
	NMP2	Along worksite northern boundary	Free-field	66.0 (68.3)	64.7 (66.1)	64.6 (67.0)	61.4 (65.8)	58.3 (66.5)	60.8 (61.7)	63.0 (64.3)	62.9 (64.5)	61.2 (64.7)	55.0 (60.2)	61.2 (64.8)	57.3 (65.8)

2.3 Exceedances of trigger level

2.3.1 Table 5 provides a summary of exceedances of the S61 trigger noise levels determined to be due to HS2 related construction noise measured during the reporting period, along with the findings of any investigation.

Table 5: Summary of exceedances of trigger levels.

Complaint Reference Number (if applicable)	Worksite Reference	Date and Time Period	Identified Source	Results of Investigation (including noise monitoring results)	Actions Taken
-	-	-	-	-	-

2.3.2 There were no exceedances of trigger levels as defined in section 61 consents during the reporting period at any monitoring position.

2.4 Complaints

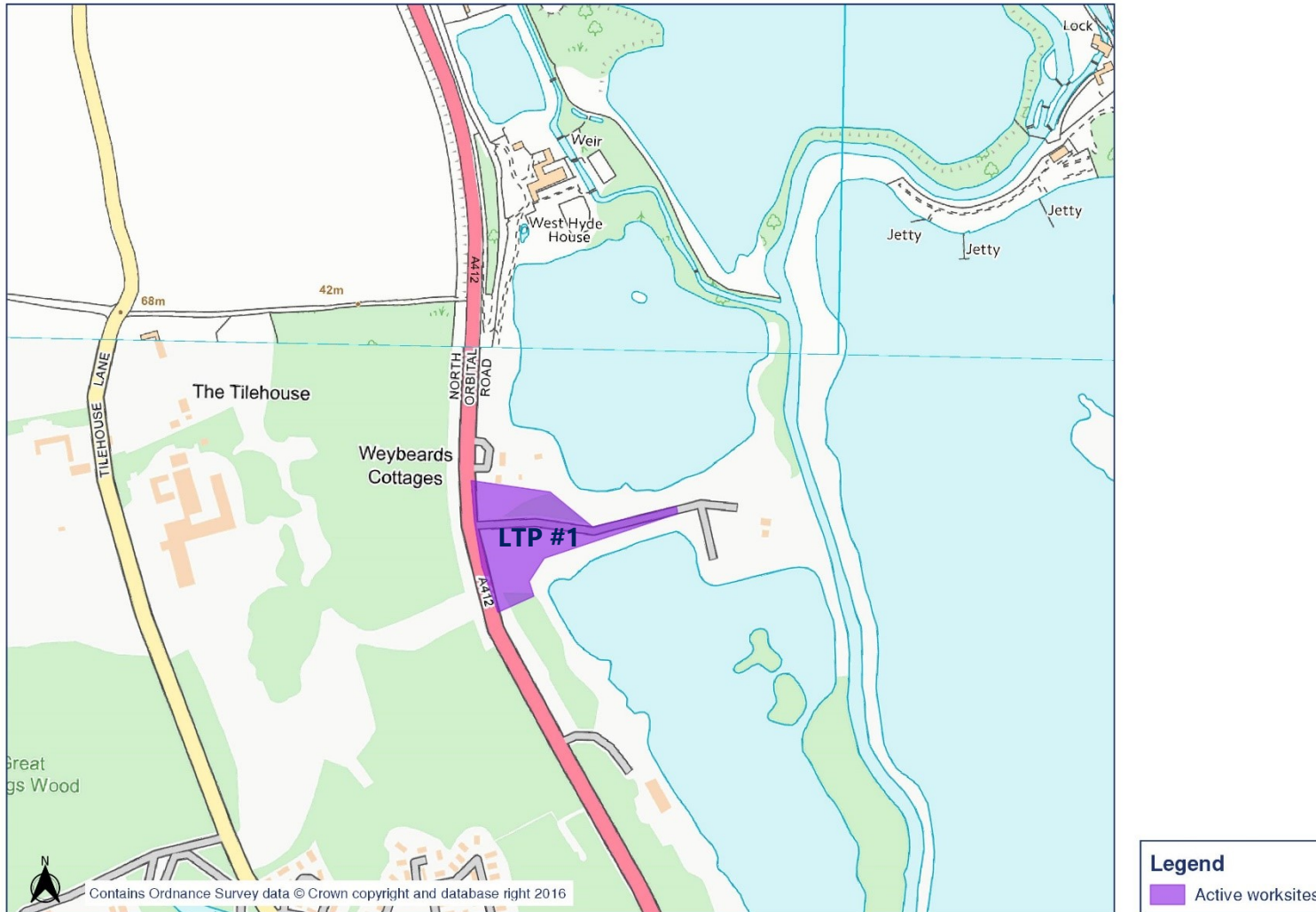
2.4.1 Table 6 provides a summary of complaint information related to noise and vibration received during the reporting period, along with the findings of any investigation.

Table 6: Summary of complaints.

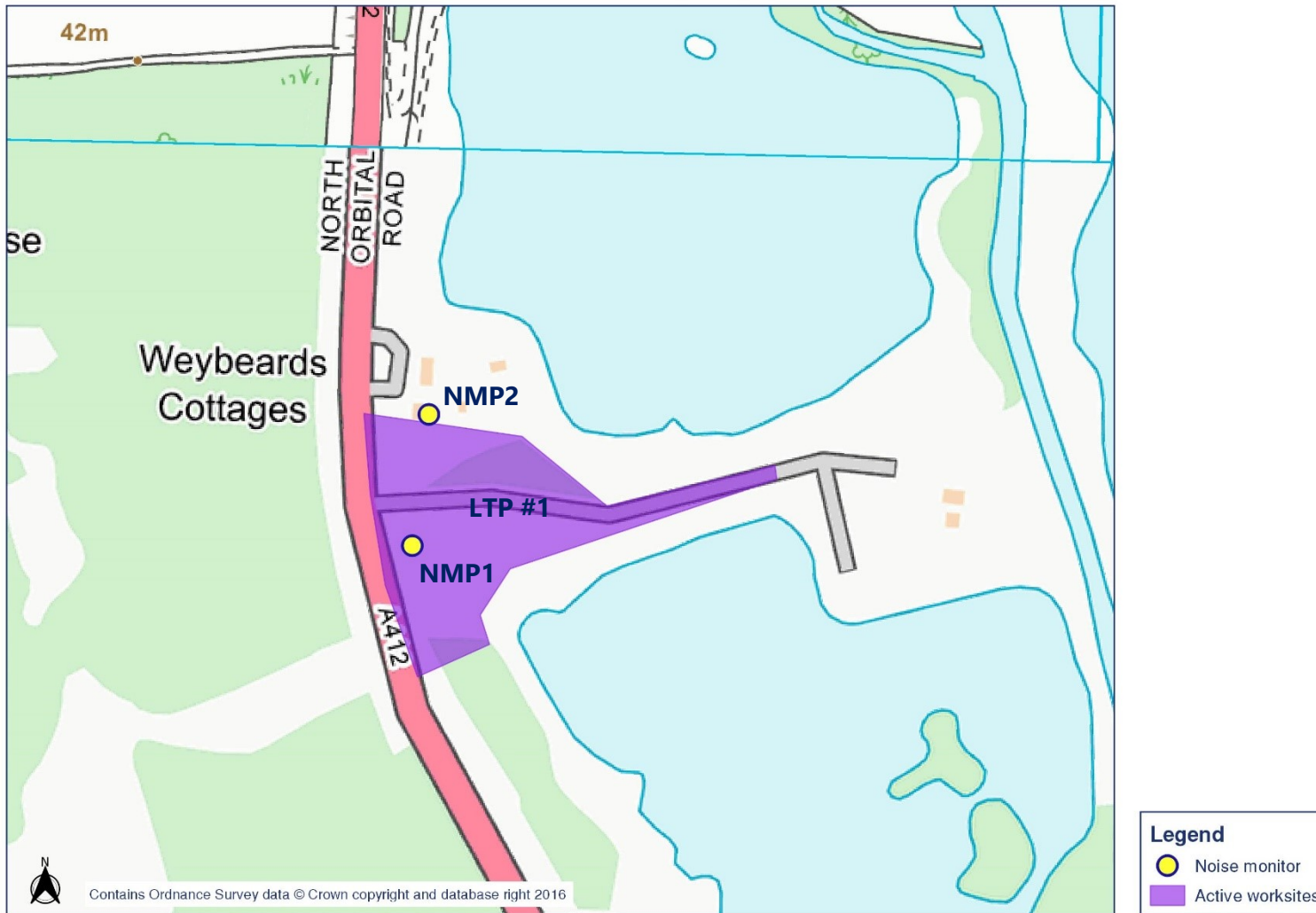
Complaint Reference Number	Worksite Reference	Description of Complaint	Results of Investigation	Actions Taken
-	-	-	-	-

2.4.2 No complaints were received during the reporting period.

Appendix A Site Locations



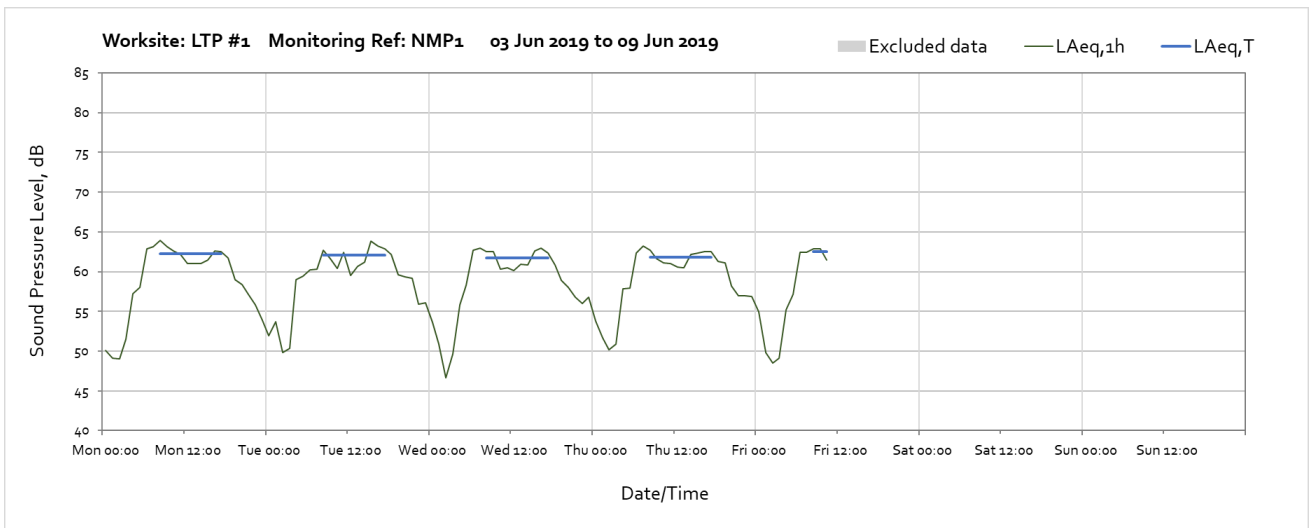
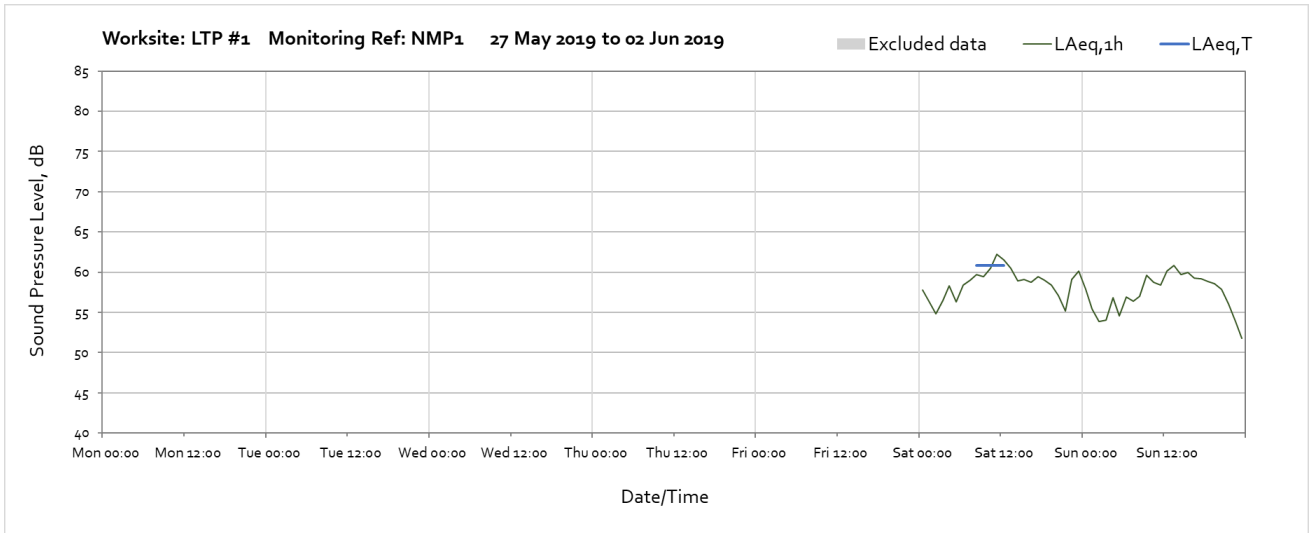
Appendix B Monitoring Locations



Appendix C Data

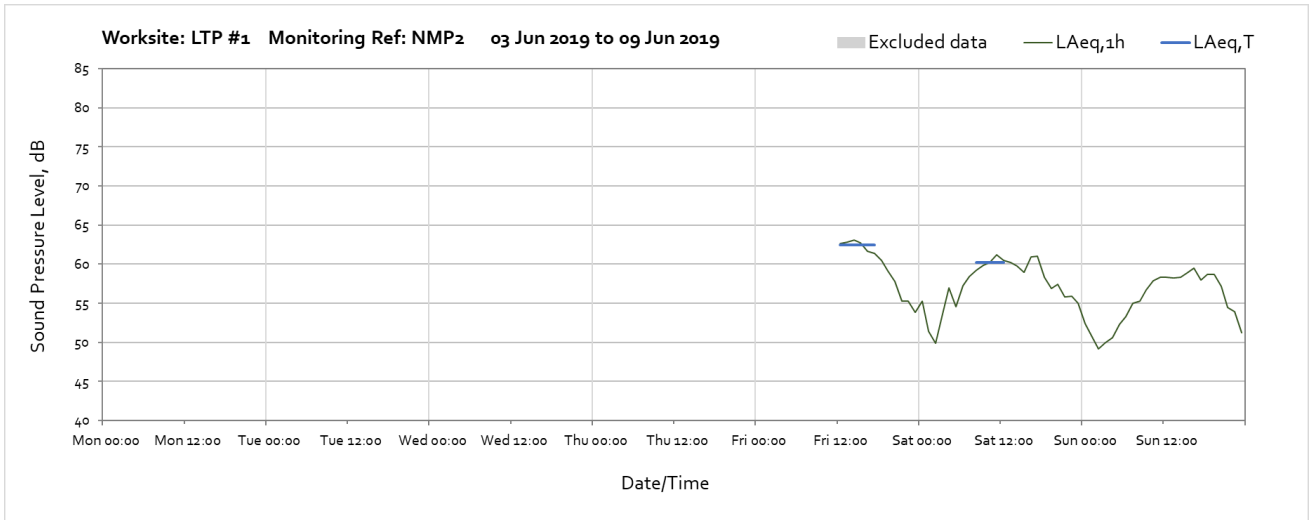
The following graphs show the hourly measured ambient noise level $L_{Aeq,1h}$ and, where relevant, the averaged noise level $L_{Aeq,T}$ values, where the time period T is as specified in Table 1 of HS2 Information Paper E23. Periods with adversely weather affected noise levels are greyed out and have been excluded from the calculation of the $L_{Aeq,T}$ values.

Worksite: LTP #1 – Monitoring Ref: NMP1



Note: The monitor was relocated from this position to a new monitoring location (NMP2) between 11:00 and 12:00 on the 6th of June.

Worksite: LTP #1 – Monitoring Ref: NMP2



Note: The monitor was relocated to this position from its previous location (NMP1) between 11:00 and 12:00 on the 6th of June.

