



Public Health  
England

Protecting and improving the nation's health

# **Suspected and laboratory confirmed reported norovirus outbreaks in hospitals (England) and norovirus laboratory reports (England and Wales): weeks 23 to 26, 2019**

Health Protection Report  
Volume 13 Number 24  
12 July 2019

## Suspected and laboratory confirmed reported norovirus outbreaks in hospitals: outbreaks occurring in weeks 23 to 26, 2019 (England)

There was one reported outbreak occurring between weeks 23 and 26 2019, which led to ward/bay closure or restriction to admissions and was recorded as laboratory confirmed due to norovirus. From week 1 (week beginning 31 December 2018) to week 26 (week beginning 30 June 2019), 127 outbreaks have been reported. All reported outbreaks resulted in ward/bay closures or restrictions to admissions and seventy-eight per cent (96) were laboratory confirmed as due to norovirus.

## Suspected and laboratory-confirmed reported norovirus outbreaks in hospitals in England, with regional breakdown: outbreaks occurring in weeks 1-26 2019

PHE Centre	Outbreaks between weeks 23-26/2019 **			Outbreaks between weeks 1-26/2019		
	Outbreaks	Ward/bay closure †	Lab confirmed	Outbreaks	Ward/bay closure †	Lab confirmed
East of England						
East Midlands				14	14	8
London						
North East				18	18	15
North West				25	25	19
South East	1	1	1	29	29	27
South West				19	19	16
West Midlands				15	15	7
Yorkshire and Humberside				7	7	7
<b>Total</b>	<b>1</b>	<b>1</b>	<b>1</b>	<b>127</b>	<b>127</b>	<b>99</b>

† Note: not all outbreaks result in whole wards closures, some closures are restricted to bays only

\* Note: not all outbreaks are reported in real time; therefore the cumulative number of outbreaks may be higher than the sum of this reporting period (weeks 18-22) and totals published in the last reporting periods.

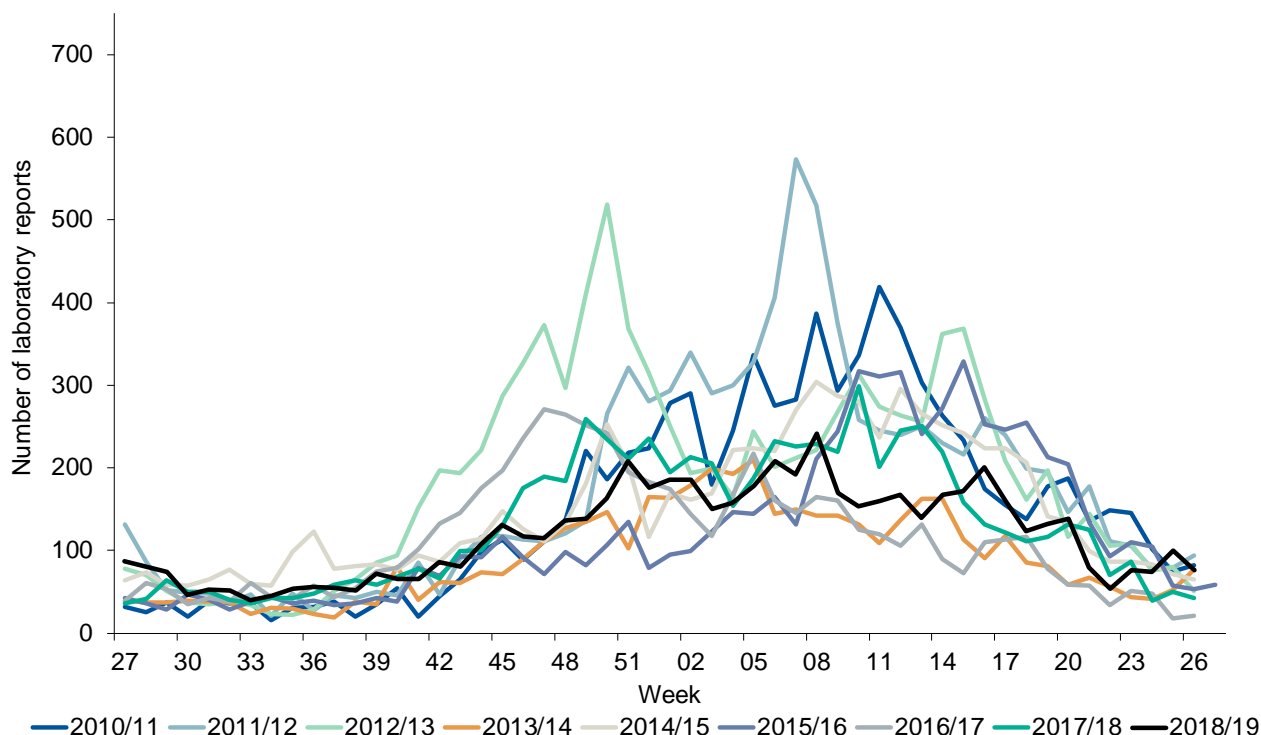
\*\* Note that the Hospital Norovirus Outbreak Reporting System is currently offline, therefore data on hospital outbreaks has been manually collated so may be incomplete and subject to updating at a later date.

## Norovirus laboratory reporting: data from SGSS (England and Wales)

From week 1, 2019 to week 26 2019 there were 3844 laboratory reports of norovirus. This is comparable to the average number of laboratory reports for the same period in the five years between 2014 and 2018 (4005). Norovirus activity from weeks 23 to 26 of the 2018/19 season was higher than the 5 season average for this four week period (2013/14 to 2017/18).

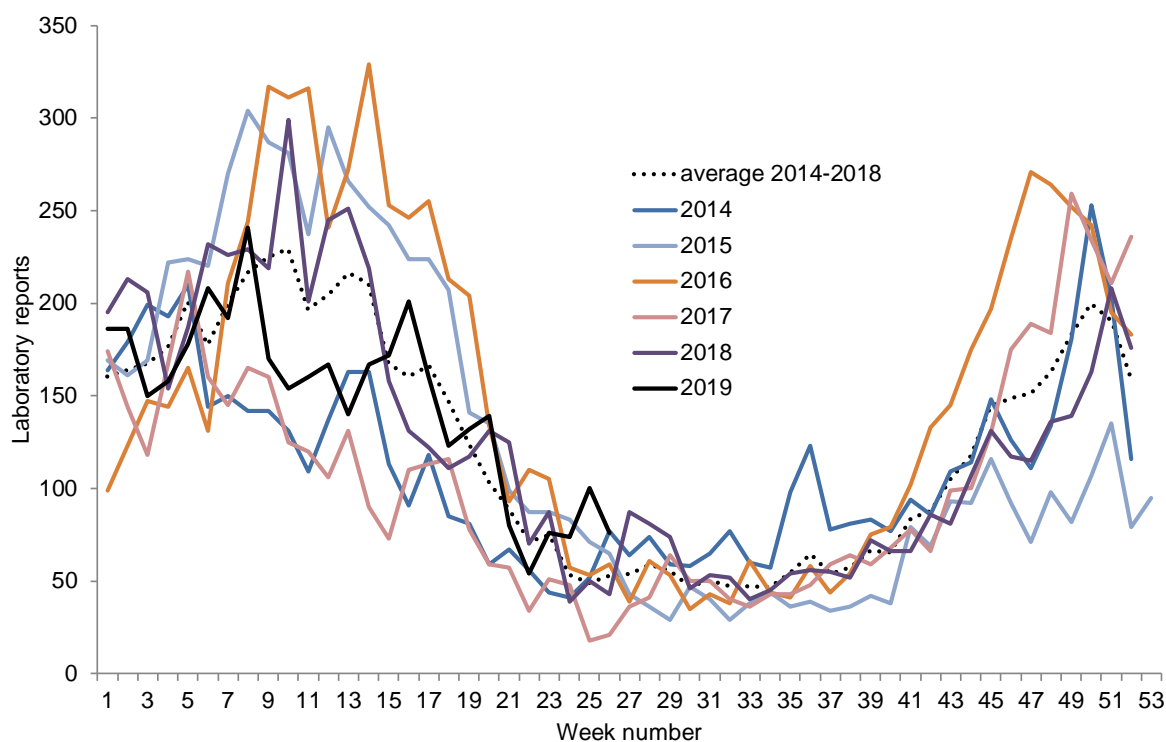
**Note:** Data from laboratory reporting are subject to a reporting delay and the number reported in the most recent weeks is likely to rise as further laboratory reports are received.

**Figure 1. Seasonal comparison of laboratory reports of norovirus 2010/11-2018/19 (England and Wales)**



**Note.** The norovirus season runs from week 27 in year 1 to week 26 in year 2, i.e. week 27 2016 – week 26 2017 July to June, in order to capture the winter peak in one season.

**Figure 2. Current weekly norovirus laboratory reports compared to weekly mean reports 2014-2019 (England and Wales)**



## About Public Health England

Public Health England exists to protect and improve the nation's health and wellbeing, and reduce health inequalities. We do this through world-class science, knowledge and intelligence, advocacy, partnerships and the delivery of specialist public health services. We are an executive agency of the Department of Health, and are a distinct delivery organisation with operational autonomy to advise and support government, local authorities and the NHS in a professionally independent manner.

### *About Health Protection Report*

*Health Protection Report* is a national public health bulletin for England and Wales, published by Public Health England. It is PHE's principal channel for the dissemination of laboratory data relating to pathogens and infections/communicable diseases of public health significance and of reports on outbreaks, incidents and ongoing investigations.

Public Health England, Wellington House, 133-155 Waterloo Road, London SE1 8UG

Tel: 020 7654 8000 [www.gov.uk/phe](http://www.gov.uk/phe)

Twitter: [@PHE\\_uk](https://twitter.com/PHE_uk) Facebook: [www.facebook.com/PublicHealthEngland](https://www.facebook.com/PublicHealthEngland)

Queries relating to this document should be directed to:  
noruOBK@phe.gov.uk

© Crown copyright 2019

You may re-use this information (excluding logos) free of charge in any format or medium, under the terms of the Open Government Licence v3.0. To view this licence, visit [OGL](https://www.ogil.gov.uk) or email [psi@nationalarchives.gsi.gov.uk](mailto:psi@nationalarchives.gsi.gov.uk). Where we have identified any third party copyright information you will need to obtain permission from the copyright holders concerned.

Published **July 2019**

PHE publications gateway number: **2019025**

