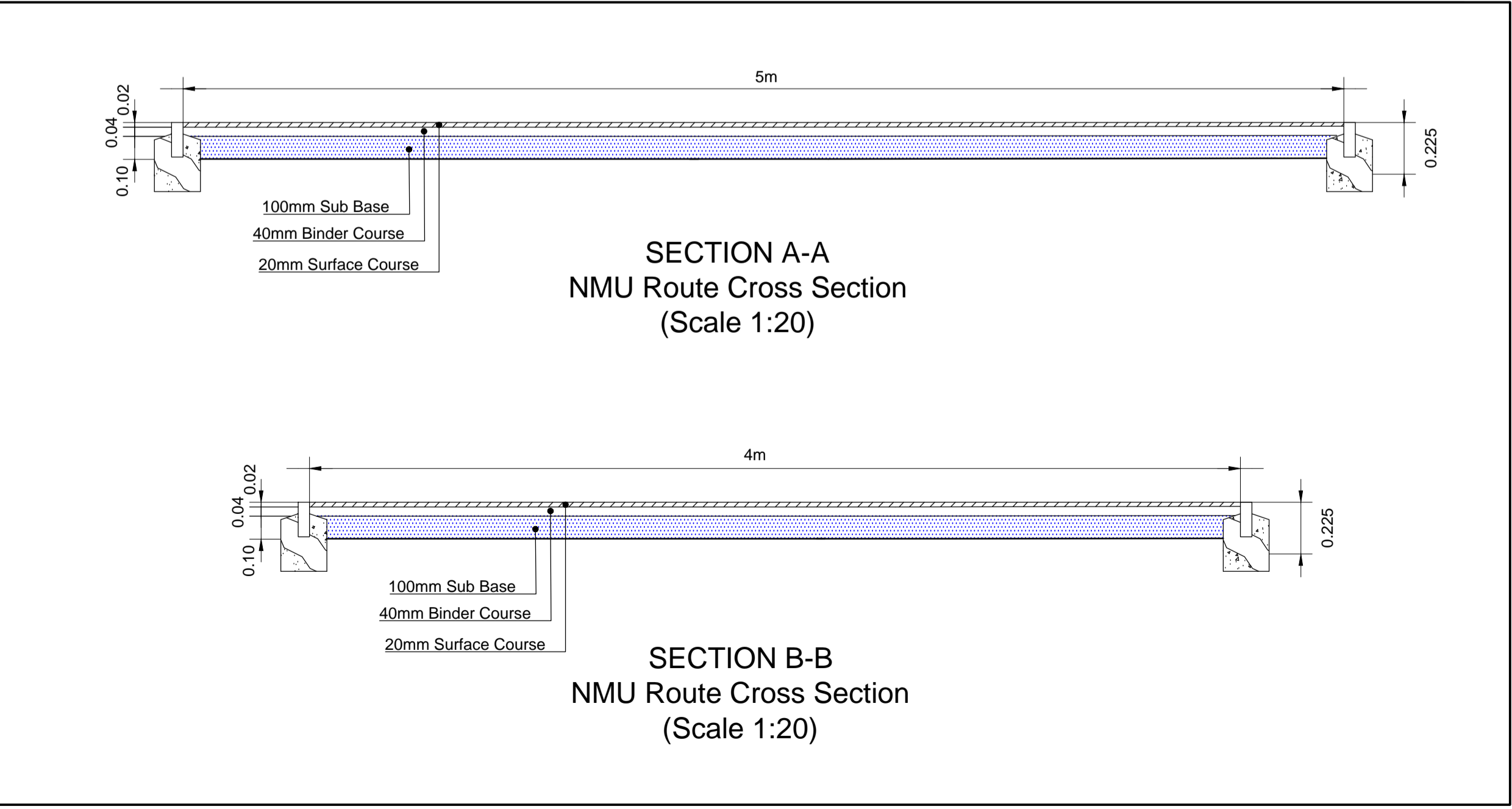
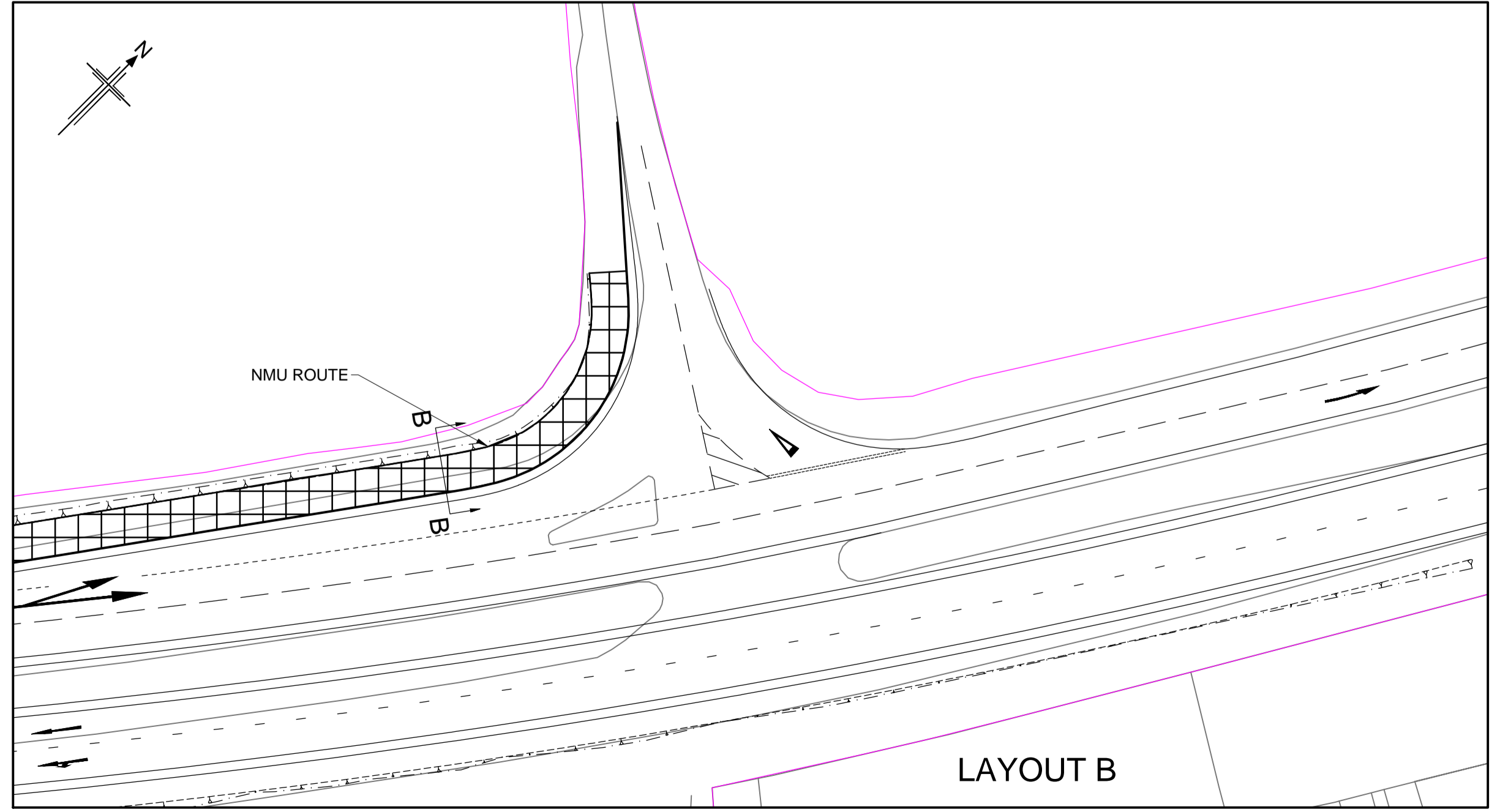
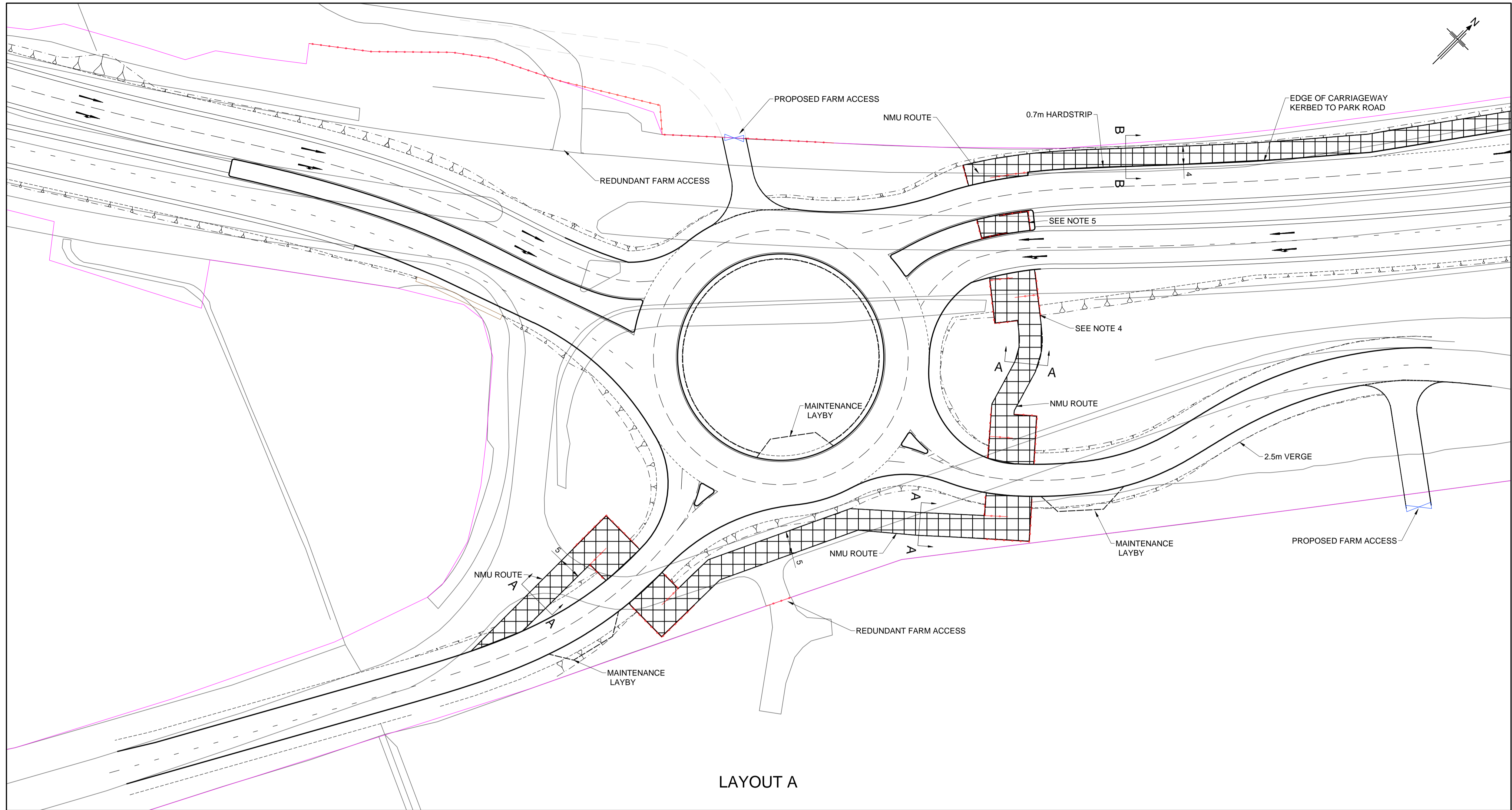


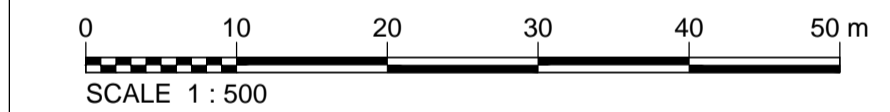
P:\B2000000\B2296800 - OD East Capital Delivery\Projects\Imp\561853 A120 Pelens Corner\Const\Drawings\HE561853-JAC-GEN-A120_PEL-DR-CH-0002 NMU Provision.dwg - 23/10/2017 17:10:39 - 001 - WilkesE2



- NOTES**
1. All dimensions in metres unless stated otherwise.
 2. Drawing is intended for illustration and for information purposes only.
 3. 10m x 10m corral.
 4. 11m x 4m corral in the central reserve.

KEY

- OS Data
- Proposed Earthworks
- Highway Boundary
- Proposed NMU Route



This map is reproduced from Ordnance Survey material with the permission of Ordnance Survey on behalf of the Controller of Her Majesty's Stationery Office © Crown copyright. Unauthorised reproduction infringes Crown copyright and may lead to prosecution or civil proceedings. AL 100030649 (2015).

CO	OCT 2017	FOR INFORMATION	SW	KS	CS	SH
Rev	Rev. Date	Purpose of revision	Drawn	Checked	Revid	Apprv'd

JACOBS
1 City Walk, Leeds, LS11 9DX
Tel: +44(0)113 242 6771
www.jacobs.com

Client: **highways england**

Project: **OD EAST CAPITAL DELIVERY
A120 PELLENS CORNER
HARWICH ROAD ROUNDABOUT**

Drawing title: **NMU PROVISION**

Drawing status: **FOR INFORMATION**

Scale: 1:500 @ A1 **DO NOT SCALE**

Jacobs No. B229M001 Rev **C0**

Client no. 561853

Drawing number: **HE561853-JAC-GEN-A120_PEL-DR-CH-0002**

© Copyright 2017 Jacobs U.K. Limited. The concepts and information contained in this document are the property of Jacobs. Use or copying of this document in whole or in part without the written permission of Jacobs constitutes an infringement of copyright. Limitation: This drawing has been prepared on behalf of, and for the exclusive use of, Jacobs' Client, and is issued in accordance with the provisions of the contract between Jacobs and the Client. Jacobs accepts no liability or responsibility whatsoever for, or in respect of, any use of, or reliance upon, this drawing by any third party.