



Ministry
of Defence

Head of Defence Statistics (Air)

MINISTRY OF DEFENCE

Shackleton
No 1 Site, HQ Air Command
Walters Ash
HIGH WYCOMBE, HP14 4UE

Telephone [MOD]: **95221 6822**

Telephone [Civ]: **01494 486822**

E-mail: **DefStrat-Stat-Air-Hd@mod.gov.uk**

Ref: FOI2019/05864



11 June 2019

Dear 

Thank you for your email of 16 May 2019 requesting the following information pertaining to a Wing Commander in the Personnel Support branch with 23 years length of service:

'Using a 7-year span of data, from 2011/12 to 2018/19 should it be available. I am interested in figures regarding:

- Average and median length of service on outflow.*
- Average time taken/percentage chance to progress from Flying Officer to Air Commodore, having already achieved the preceding rank.*
- Percentage chance of serving through to LOS 40.*

It would be most useful if it were at all possible for you to provide the same data for a new entrant to this specialism if within the constraints for you to do so'.

I am treating your correspondence as a request for information under the Freedom of Information Act 2000 (FOIA).

The information you have requested can be found in the Adobe (.pdf) file attached to the email.

On 1 October 2011 the Personnel (Support), Personnel (Training) and Personnel (Physical Education) branches were amalgamated into a single Personnel Branch. On 1 February 2016 the Personnel branch was then once again divided into the Support and Training specialisations. As the seven year span of data used to generate a projection covers both the amalgamation and subsequent division of the branch specialisations, the attached data pertains to the Personnel branch as a whole.

If you have any queries regarding the content of this letter, please contact this office in the first instance.

If you wish to complain about the handling of your request, or the content of this response, you can request an independent internal review by contacting the Information Rights Compliance

team, Ground Floor, MOD Main Building, Whitehall, SW1A 2HB (e-mail CIO-FOI-IR@mod.uk). Please note that any request for an internal review should be made within 40 working days of the date of this response.

If you remain dissatisfied following an internal review, you may raise your complaint directly to the Information Commissioner under the provisions of Section 50 of the Freedom of Information Act. Please note that the Information Commissioner will not normally investigate your case until the MOD internal review process has been completed. The Information Commissioner can be contacted at: Information Commissioner's Office, Wycliffe House, Water Lane, Wilmslow, Cheshire, SK9 5AF. Further details of the role and powers of the Information Commissioner can be found on the Commissioner's website at <https://ico.org.uk/>.

Yours sincerely,

Head of Defence Statistics (Air)

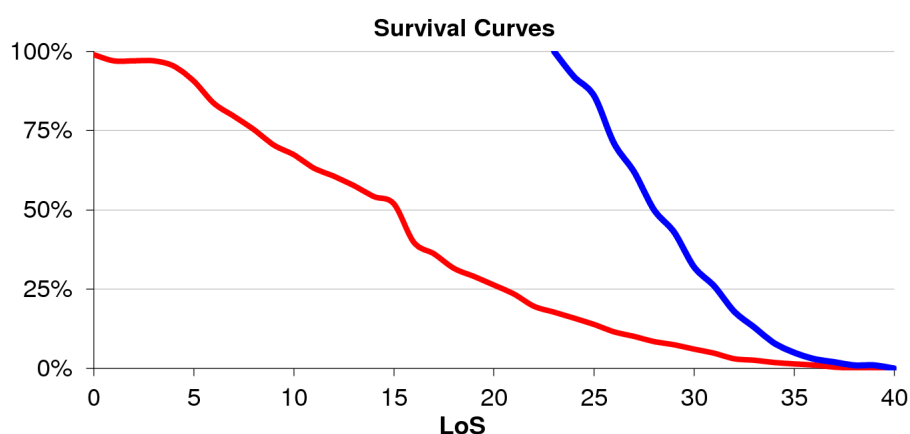
Would you like to be added to our contact list so we can consult with you if we are thinking about making any changes to the statistics we compile? Please register your interest by e-mailing defstrat-stat-air@mod.uk

Career Projection for a New Entrant and a Wing Commander with 23 years length of service in the Personnel branch

LoS ¹	% chance of reaching LoS for New Entrant	% chance of reaching LoS for Wg Cdr with 23yrs LoS
0	99%	
1	97%	
2	97%	
3	97%	
4	95%	
5	91%	
6	84%	
7	80%	
8	75%	
9	70%	
10	67%	
11	63%	
12	61%	
13	58%	
14	54%	
15	52%	
16	40%	
17	36%	
18	32%	
19	29%	
20	26%	
21	23%	
22	20%	
23	18%	100%
24	16%	92%
25	14%	86%
26	12%	71%
27	10%	62%
28	8%	50%
29	7%	43%
30	6%	32%
31	5%	26%
32	3%	18%
33	3%	13%
34	2%	8%
35	1%	5%
36	1%	3%
37	0%	2%
38	0%	1%
39	0%	1%
40	0%	0%

% chance of promotion into rank, having already achieved the preceding rank ²	
PLT OFF/FG OFF	
FLT LT	96%
SQN LDR	53%
WG CDR	31%
GP CAPT	27%
AIR CDRE +	25%

Average Return of Service ³	18 years 9 months
Median Return of Service ³	17 years



¹ LoS x' means 'LoS greater than or equal to x but less than x+1'. So 'LoS21', for example, is the chance of personnel serving more than or equal to 21 years but less than 22 years.

² 'Chance of promotion having already achieved the preceding rank' considers all personnel in the branch and is not specific to LoS. It is based on trained and untrained personnel within the branch.

³ Average & Median Return of Service are the average lengths of service on exit. They consider trained & untrained personnel within the branch and is not specific to rank or LoS.

Notes:

a. These data are based on the seven year span of actual data **2011/12 – 2017/18**. By considering a cohort of individuals with the similar characteristics - **New Entrants** and **Wg Cdrs** with **23 years** length of service into the **Personnel** branch - average career projections have been calculated.

b. Defence Statistics' career forecasts are not based on the actual experience of any one individual, but rather are based on the historical behaviour of individuals with