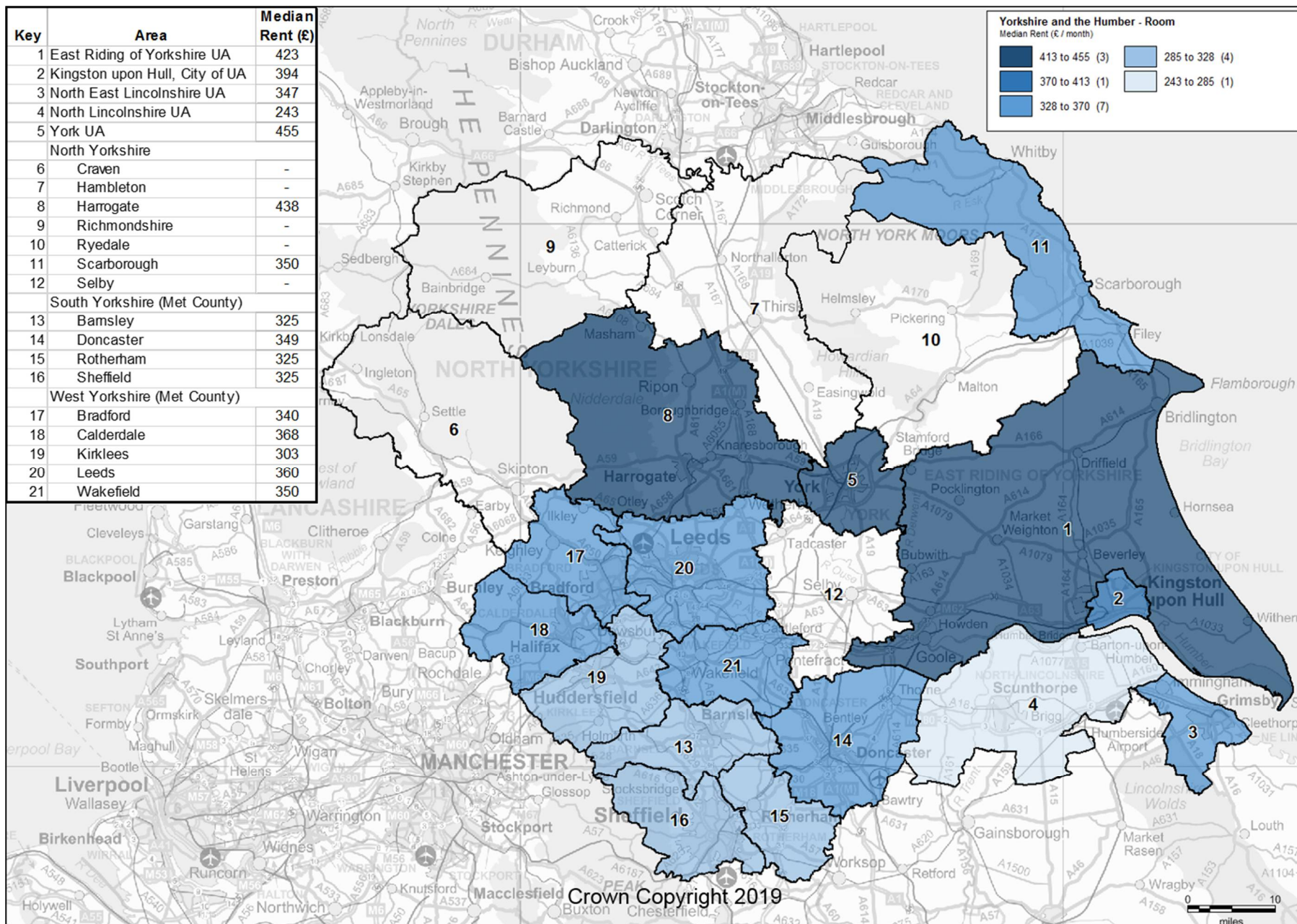


Private Rental Market Statistics, 'Room' monthly rents recorded between 1 April 2018 and 31 March 2019 for Yorkshire and the Humber



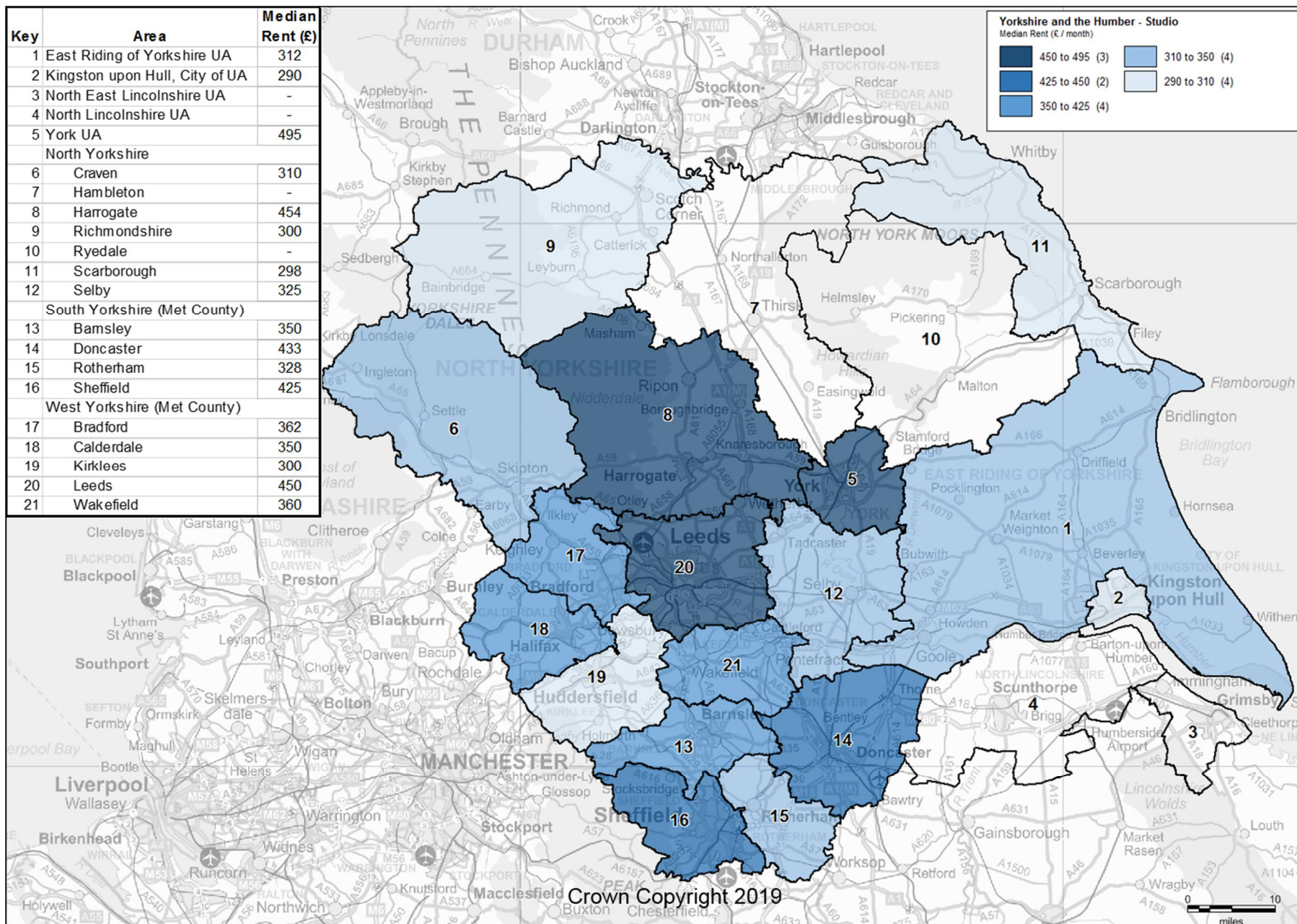
Statistics derived from fewer than five observations have been suppressed and denoted by '-':

The data used to generate these statistics are based on a sample of rental information, collected by Rent Officers from landlords and letting agents.

Please note the legend labels are up to and not including the highest figure for each category. Although the highest median rent is included in the first category.

The composition of this sample changes over time therefore any differences in median rent may be due to differences in the sample rather than true changes in the rental market.

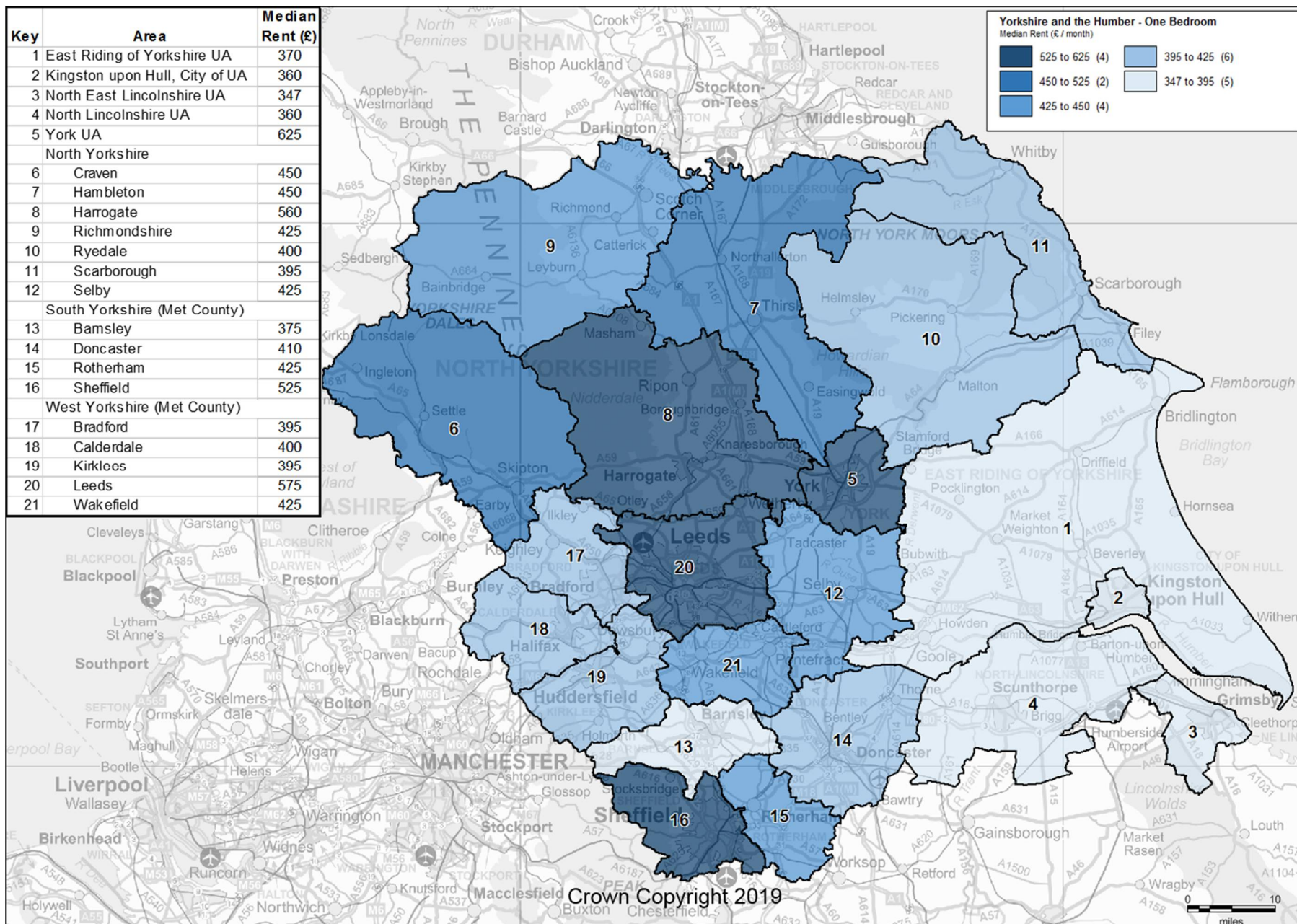
Private Rental Market Statistics, 'Studio' monthly rents recorded between 1 April 2018 and 31 March 2019 for Yorkshire and the Humber



Statistics derived from fewer than five observations have been suppressed and denoted by '-'. The data used to generate these statistics are based on a sample of rental information, collected by Rent Officers from landlords and letting agents.

Please note the legend labels are up to and not including the highest figure for each category. Although the highest median rent is included in the first category. The composition of this sample changes over time therefore any differences in median rent may be due to differences in the sample rather than true changes in the rental market.

Private Rental Market Statistics, 'One Bedroom' monthly rents recorded between 1 April 2018 and 31 March 2019 for Yorkshire and the Humber



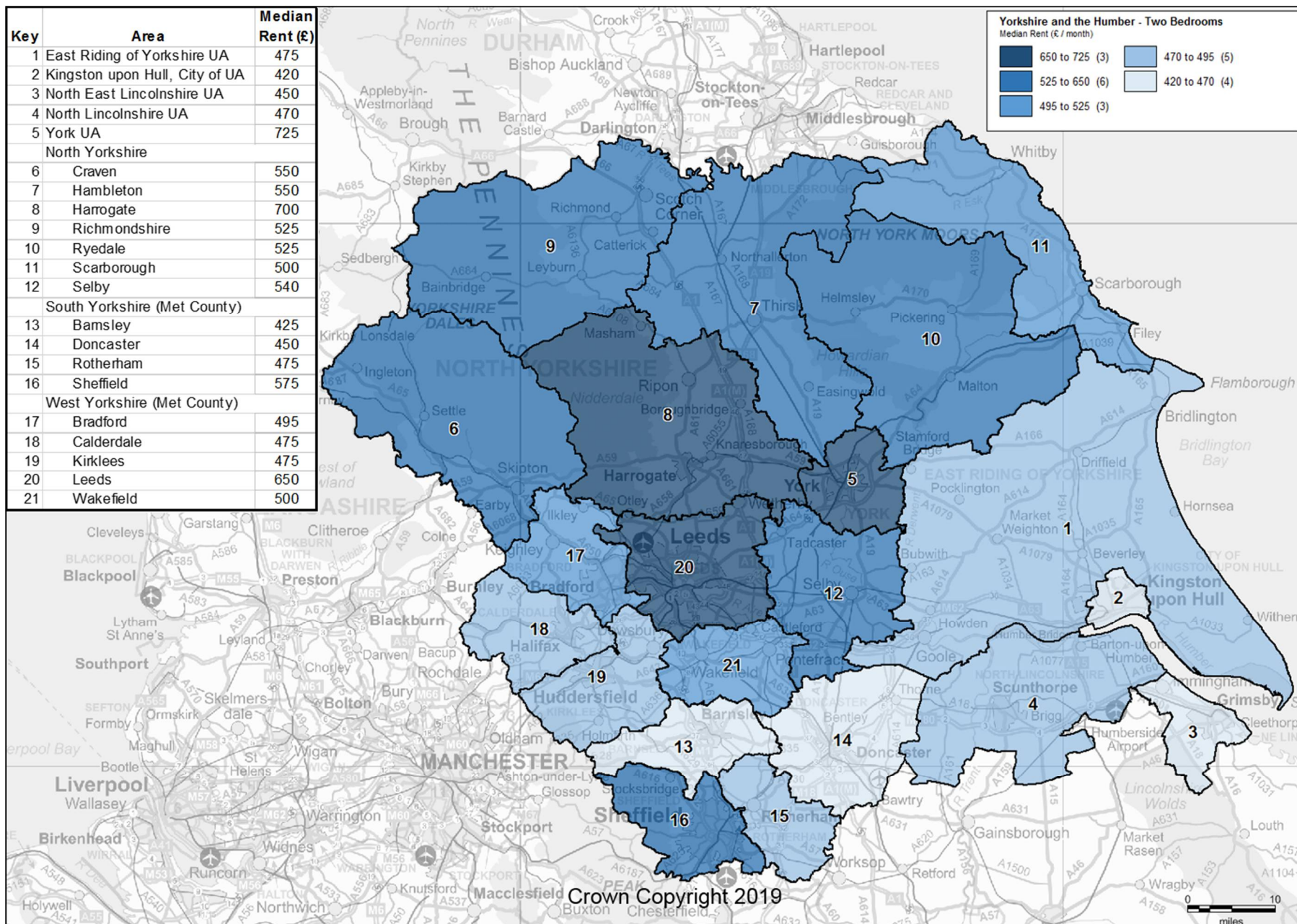
Statistics derived from fewer than five observations have been suppressed and denoted by '-':

The data used to generate these statistics are based on a sample of rental information, collected by Rent Officers from landlords and letting agents.

Please note the legend labels are up to and not including the highest figure for each category. Although the highest median rent is included in the first category.

The composition of this sample changes over time therefore any differences in median rent may be due to differences in the sample rather than true changes in the rental market.

Private Rental Market Statistics, 'Two Bedrooms' monthly rents recorded between 1 April 2018 and 31 March 2019 for Yorkshire and the Humber



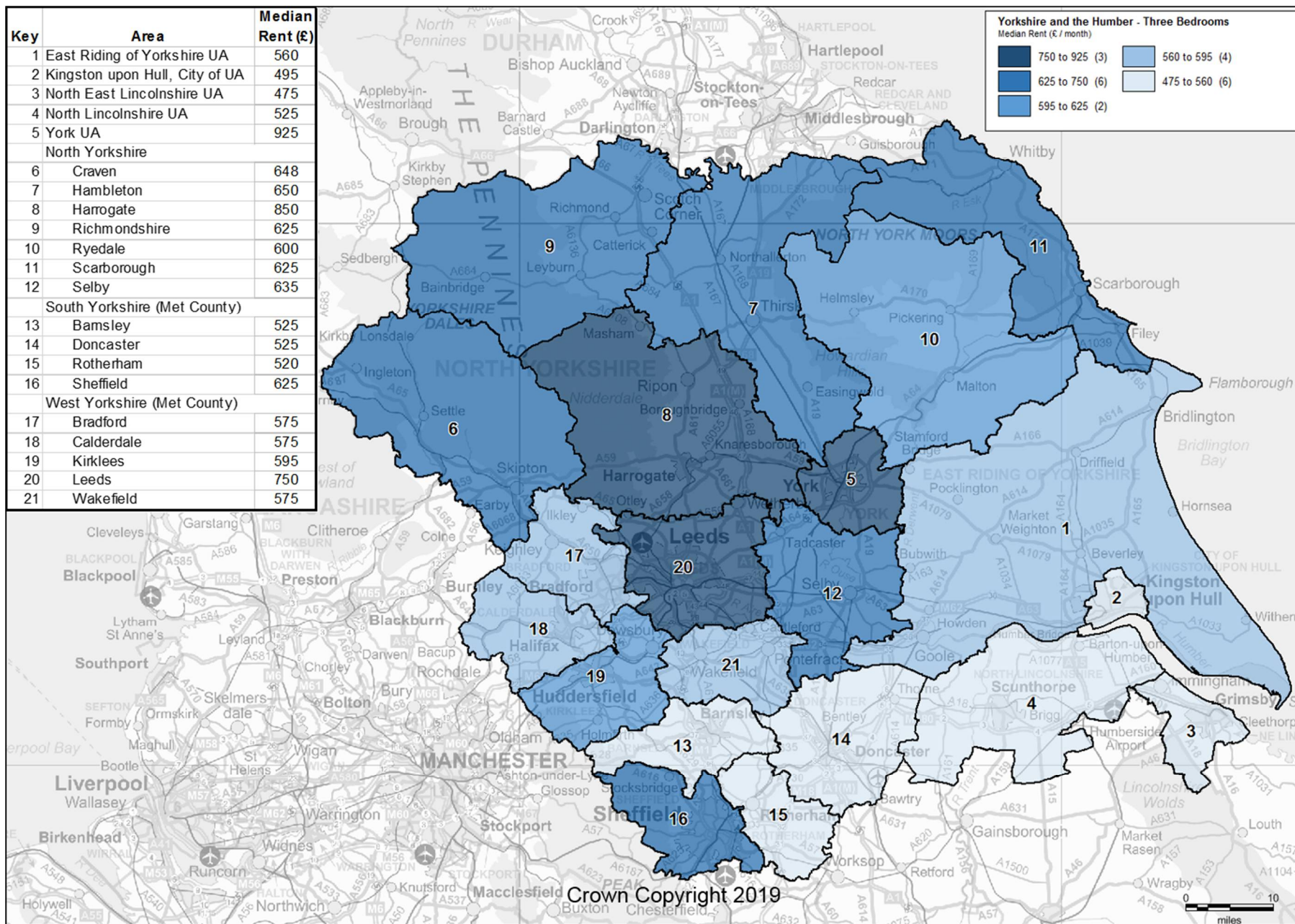
Statistics derived from fewer than five observations have been suppressed and denoted by '-':

The data used to generate these statistics are based on a sample of rental information, collected by Rent Officers from landlords and letting agents.

Please note the legend labels are up to and not including the highest figure for each category. Although the highest median rent is included in the first category.

The composition of this sample changes over time therefore any differences in median rent may be due to differences in the sample rather than true changes in the rental market.

Private Rental Market Statistics, 'Three Bedrooms' monthly rents recorded between 1 April 2018 and 31 March 2019 for Yorkshire and the Humber



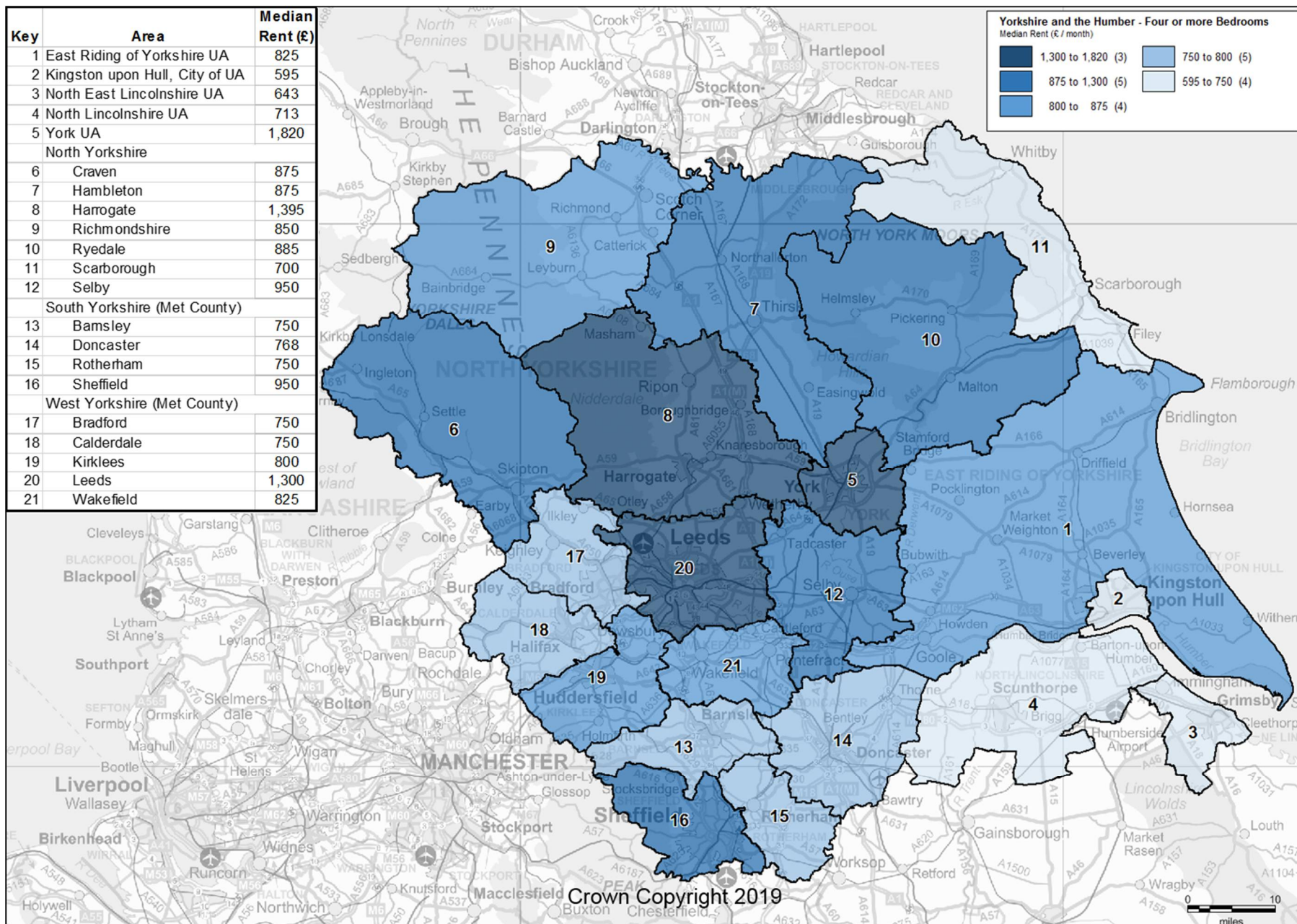
Statistics derived from fewer than five observations have been suppressed and denoted by '-'.

The data used to generate these statistics are based on a sample of rental information, collected by Rent Officers from landlords and letting agents.

Please note the legend labels are up to and not including the highest figure for each category. Although the highest median rent is included in the first category.

The composition of this sample changes over time therefore any differences in median rent may be due to differences in the sample rather than true changes in the rental market.

Private Rental Market Statistics, 'Four or more Bedrooms' monthly rents recorded between 1 April 2018 and 31 March 2019 for Yorkshire and the Humber



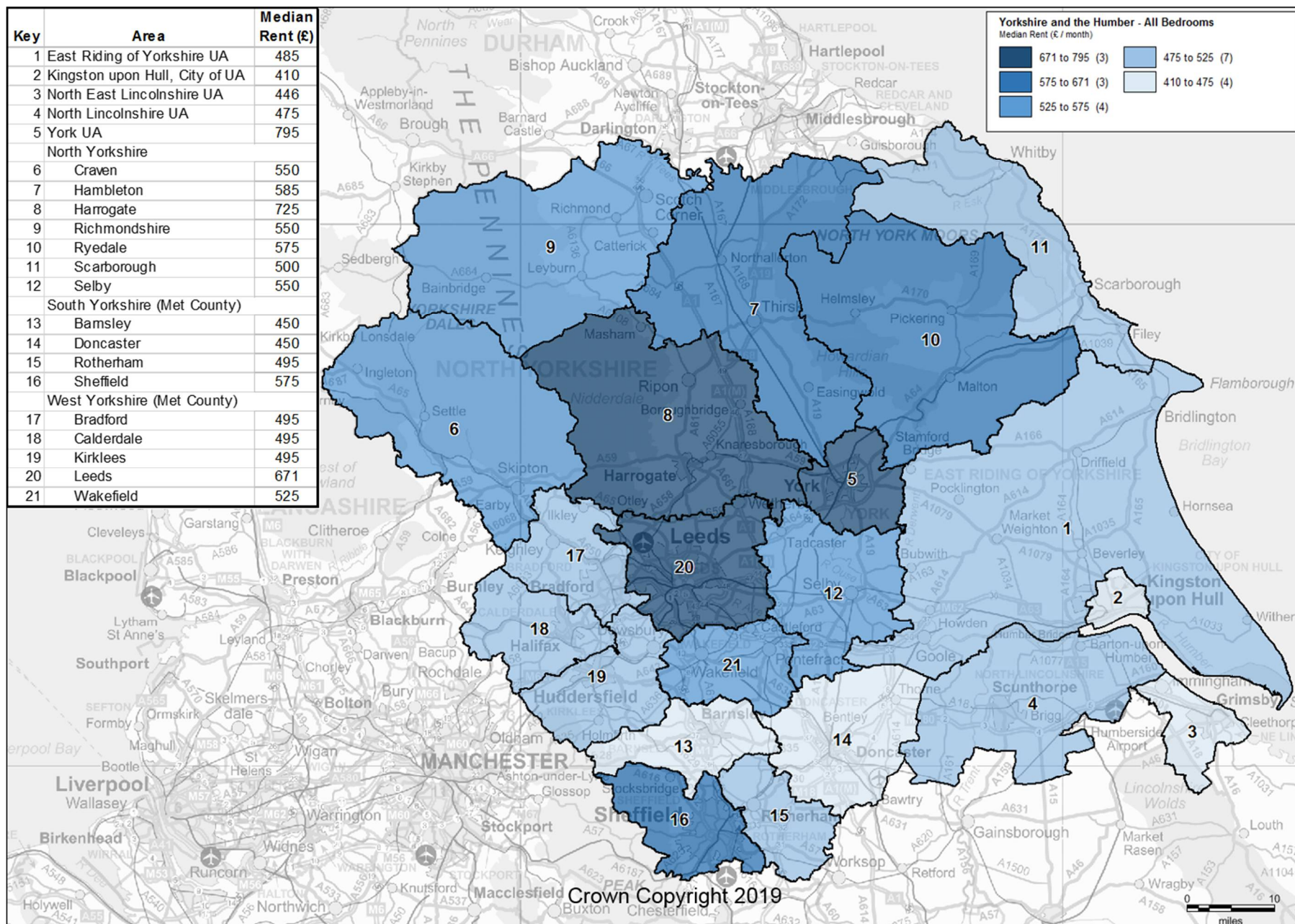
Statistics derived from fewer than five observations have been suppressed and denoted by '-'.

The data used to generate these statistics are based on a sample of rental information, collected by Rent Officers from landlords and letting agents.

Please note the legend labels are up to and not including the highest figure for each category. Although the highest median rent is included in the first category.

The composition of this sample changes over time therefore any differences in median rent may be due to differences in the sample rather than true changes in the rental market.

Private Rental Market Statistics, 'All Bedrooms' monthly rents recorded between 1 April 2018 and 31 March 2019 for Yorkshire and the Humber



Statistics derived from fewer than five observations have been suppressed and denoted by '-'. The data used to generate these statistics are based on a sample of rental information, collected by Rent Officers from landlords and letting agents.

Please note the legend labels are up to and not including the highest figure for each category. Although the highest median rent is included in the first category. The composition of this sample changes over time therefore any differences in median rent may be due to differences in the sample rather than true changes in the rental market.