

NOTICE OF ORDER

Wildlife and Countryside Act 1981 Section 53

Cambridgeshire County Council

(Public Byways Open to All Traffic No. 7 Witchford and No. 14 Wilburton)

Modification Order 2018

Notice is hereby given that the above referenced Order has been submitted to the Secretary of State for Environment, Food and Rural Affairs for determination. An Inspector will be appointed by the Secretary of State to determine the Order.

The **start date** for the above Order is 2 July 2019

Consideration of the Order will take the form of exchanges of statements of case and comments on statements of case.

The effect of the Order, if confirmed without modifications, will be to modify the Definitive Statement for the area by:

Varying the particulars relating to Public Byway Open to All Traffic No.7 Witchford and adding to them a recorded width varying between 5 and 8.75 metres.

Varying the particulars relating to Public Byway Open to All Traffic No. 14 Wilburton and adding to them a recorded width varying between 5 and 8.3 metres.

Any queries relating to this Order should be referred to Jean McEntee at The Planning Inspectorate, Rights of Way Section, Room 3/A Eagle Wing, Temple Quay House, 2 The Square, Temple Quay, Bristol, BS1 6PN. Telephone: 0303 444 5437. Email: jean.mcentee@planninginspectorate.gov.uk Please quote reference number ROW/3221812 on all correspondence.

Any person wishing to view the statements of case and other documents relating to this Order may do so by appointment at Cambridgeshire County Council, Stanton Way Depot, Stanton Way, Huntingdon PE29 6PY during normal office hours. Telephone: 01223 715626.

Timetable for sending in statements of case and comments

Within 2 weeks of the start date [by 16 July 2019]

The Order Making Authority must ensure their statement of case is received by the Secretary of State. As soon as possible after the deadline, the Secretary of State will send a copy (excluding copies of any supporting documents - these will be available to view at the Authority's offices) to everyone who has made an objection or representation, the applicant and any other person who has written to us in respect of the Order.

Within 8 weeks of the start date [by 27 August 2019]

Everyone who has made an objection or representation or any other written representation must ensure their statement of case is received by the Secretary of

State. As soon as possible after the deadline, the Secretary of State will send full copies to the Authority. Copies (excluding copies of any supporting documents - these will be available to view at the Authority's offices) will also be sent to the applicant, every person who has made an objection or representation and any other person who has written to us in respect of the Order.

Within the same period the applicant (if applicable) must ensure their statement of case is received by the Secretary of State. As soon as possible after the deadline, Secretary of State will send a full copy to the Authority. Copies will also be sent to everyone who has made an objection or representation and any other person who has written to us in respect of the Order (excluding copies of any supporting documents - these will be available to view at the Authority's offices).

Within 14 weeks of the start date [by 8 October 2019]

Everyone who has made an objection or representation, the Authority, the applicant (if applicable) and anyone who has written to us in respect of the Order must ensure that their comments on any or every other statement of case is received by the Secretary of State. As soon as possible after the deadline, the Secretary of State will send copies of these comments to everyone else.

Any other person wishing to make representations in writing to the Secretary of State in respect of the above Orders must do so in line with the timetable set out above.

In fairness to the other parties everyone should keep to the timetable to ensure that statements of case and comments are received on time. Late documents will be returned.

We cannot accept any libellous, racist or abusive comments. Any documents containing such comments will be returned.

**MODIFICATION ORDER
WILDLIFE AND COUNTRYSIDE ACT 1981**

The Definitive Map and Statement of Public Rights of Way for Cambridgeshire dated 11th May 2016.

**The Cambridgeshire County Council (Public Byways Open to All Traffic No. 7
Witchford and No. 14 Wilburton) Modification Order 2018**

This Order is made by Cambridgeshire County Council under section 53(2)(b) of the Wildlife and Countryside Act 1981 ("the Act") because it appears to the Authority that the Definitive Map and Statement of Public Rights of Way for the County of Cambridgeshire dated 11th May 2016 require modification in consequence of the occurrence of an event specified in section 53(2)(c)(iii) of the Act, namely that there is no public right of way over land shown in the map and statement as a highway of any description, or any other particulars contained in the map and statement require modification.

The Authority have consulted with every local authority whose area includes the land to which the Order relates. The Cambridgeshire County Council hereby order that:

1. For the purposes of this Order the relevant date shall be the date on which this Order is made.
2. The Definitive Map and Statement of Public Rights of Way for the County of Cambridgeshire dated 11th May 2016 shall be modified as described in the Schedule and shown on parts 1 and 2 of the Plan attached to the Order.
3. This Order shall take effect on the date it is confirmed and may be cited as the The Cambridgeshire County Council (Public Byways Open to All Traffic No. 7 Witchford and No. 14 Wilburton) Modification Order 2018.

The COMMON SEAL of the said
CAMBRIDGESHIRE COUNTY COUNCIL
was hereunto affixed this 14th day of NOVEMBER
2018



in the presence of

Chickin, Solicitor

**SCHEDULE
PART I
Modification of Definitive Map**

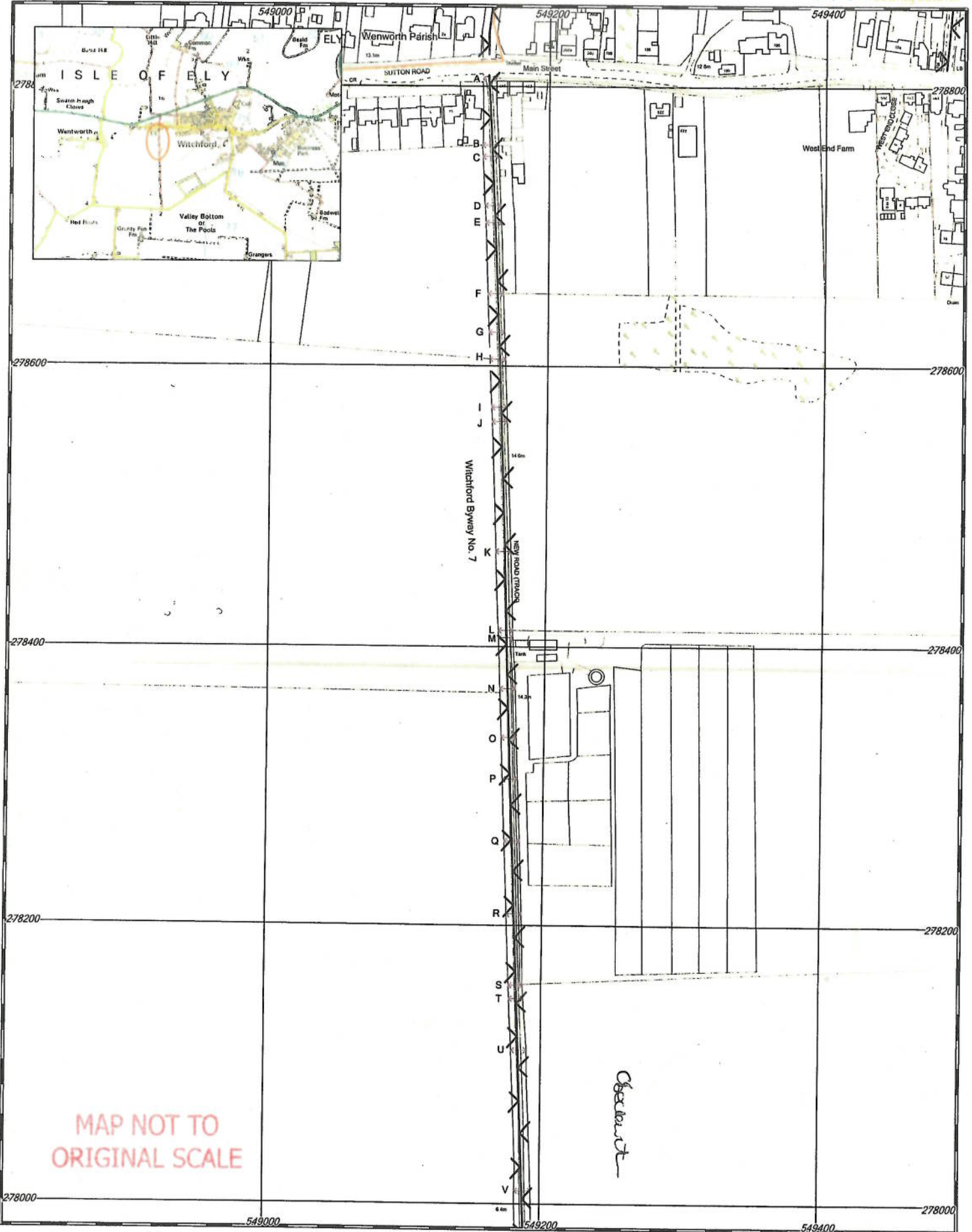
Not applicable

**PART II
Modification of Definitive Statement**

Variation of Particulars of Path or Way

Public Byway Open to All Traffic No. 7 Witchford:

Width of Path or Way at locations indicated on Parts 1 and 2 of the Order Plan		Width (metres)
Order Plan Part	Reference on Order Plan	
1	A	7.7
1	B	8.1
1	C	8.1
1	D	8.1
1	E	7.7
1	F	8
1	G	8
1	H	8
1	I	8
1	J	8
1	K	8
1	L	8
1	M	8
1	N	8
1	O	8
1	P	8
1	Q	8
1	R	8
1	S	8.1
1	T	8.6
1	U	8.6
1	V	8.4
2	W	7.9
2	X	8.2
2	Y	8.3
2	Z	8
2	AA	8.75
2	BB	8.7
2	CC	7.5
2	DD	7.5
2	EE	6.4
2	FF	5
2	GG	5



MAP NOT TO ORIGINAL SCALE

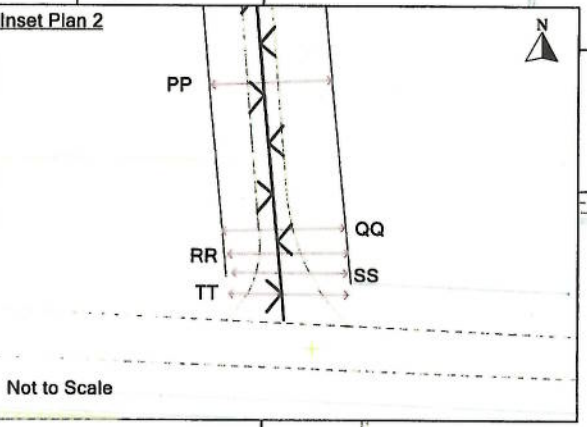
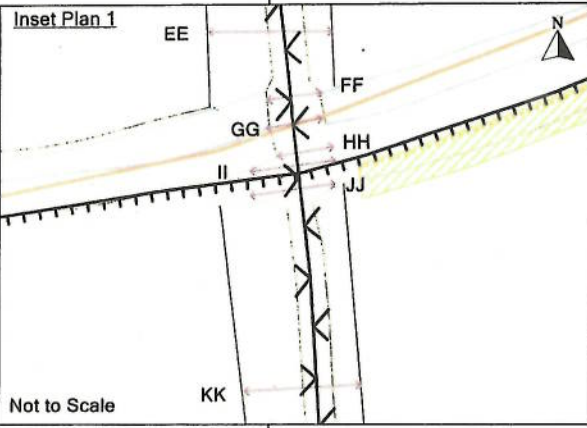
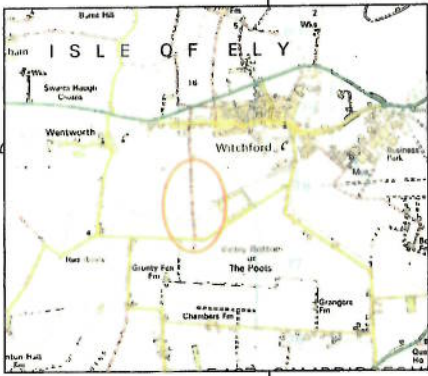
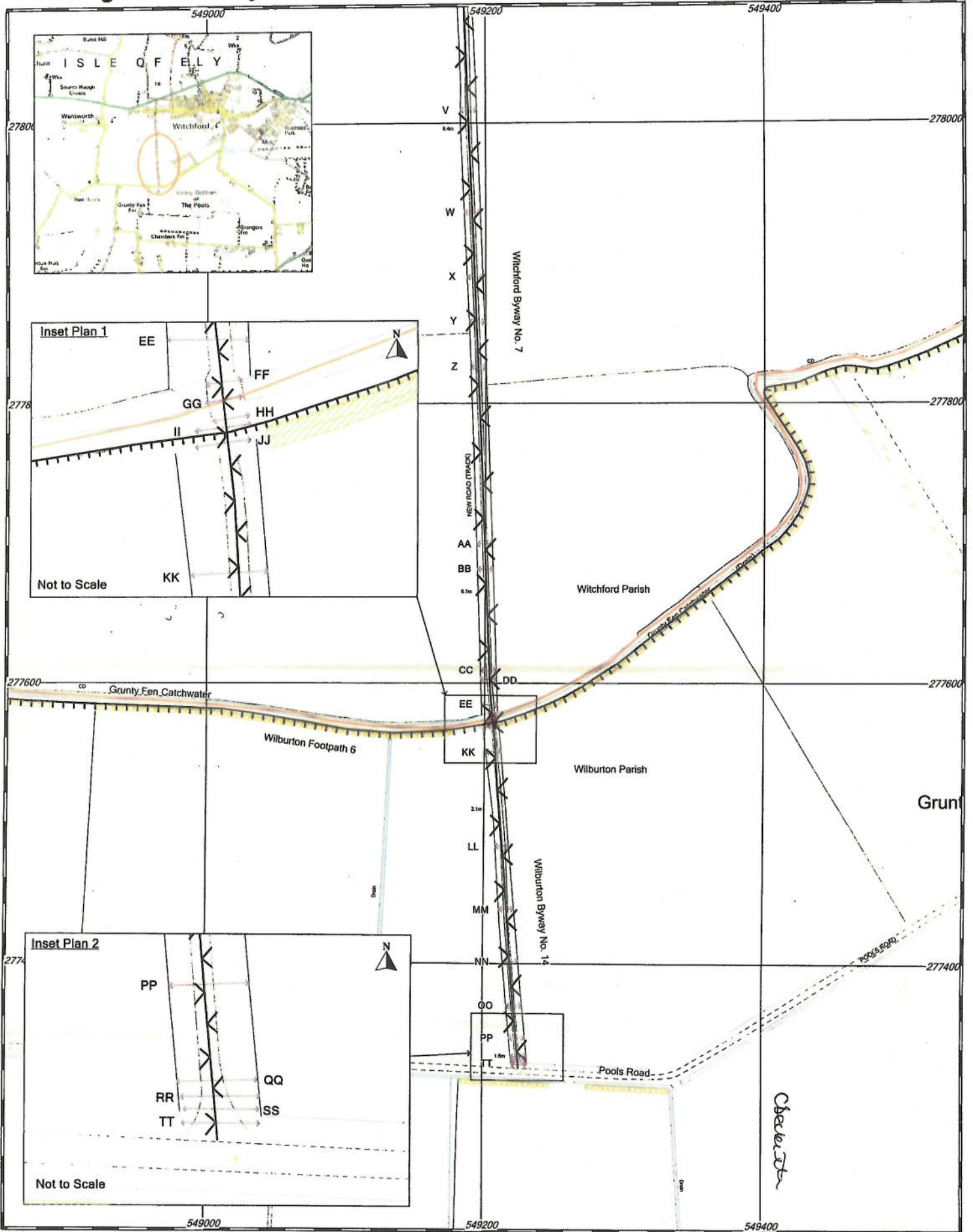
Obedant

Scale: 1: 2500 @ A3
 Date: 12/11/2018
 By: fn307



THIS PLAN FORMS PART OF THE CAMBRIDGESHIRE COUNTY COUNCIL (PUBLIC BYWAYS OPEN TO ALL TRAFFIC NO. 7 WITCHFORD AND NO. 14 WILBURTON) MODIFICATION ORDER 2018 - PART 1

Byway Open to All Traffic affected by Order (A - QQ)		Unaffected Public Footpath	
Other Unaffected Byway Open to All Traffic		Parish Boundary	



Scale: 1:2500 @ A3
 Date: 06/11/2018
 By: fn307



MAP NOT TO ORIGINAL SCALE

THIS PLAN FORMS PART OF THE CAMBRIDGESHIRE COUNTY COUNCIL (PUBLIC BYWAYS OPEN TO ALL TRAFFIC NO. 7 WITCHFORD AND NO. 14 WILBURTON) MODIFICATION ORDER 2018 - PART 2

Byway Open to All Traffic affected by Order (A - QQ)		Unaffected Public Footpath	
Other Unaffected Byway Open to All Traffic		Parish Boundary	

The Definitive Statement for Public Byway Open to all Traffic No. 7 Witchford shall be amended as follows:

Commences at Sutton Road (public road) opposite Dunham's Lane (Wentworth BOAT 5) at Ordnance Survey Grid reference TL 4915 7880 and runs in a generally southerly direction along New Road for approximately 1227 metres to a culvert at TL 4920 7757. Then continuing generally south for approximately 5 metres over the Grunty Fen Catchwater Drain to the Wilburton Parish Boundary and a junction with Wilburton BOAT 14 at TL 4920 7757. At TL 4915 7880 the western boundary is located on an alignment 30cm to the west of the stench-pipe and the eastern boundary on an alignment 1.2m to the west of the external wall of No. 243 Main Street. At TL 4915 7875 the eastern boundary is located 1.2m from metal gates aligned with the eastern batter of the ditch that runs south from this point.

Width: Varying between 5 metres and 8.75 metres as more particularly described in Part II of the Schedule to The Cambridgeshire County Council (Public Byways Open to All Traffic No. 7 Witchford and No. 14 Wilburton) Modification Order 2018.

Public Byway Open to All Traffic No. 14 Wilburton:

Width of Path or Way at locations indicated on Parts 1 and 2 of the Order Plan		Width (metres)
Order Plan Part	Reference on Order Plan	
2	HH	5
2	II	7
2	JJ	7
2	KK	8.3
2	LL	8.3
2	MM	7.9
2	NN	7.5
2	OO	7.3
2	PP	7.8
2	QQ	6.7
2	RR	6.6
2	SS	6.1
2	TT	7.2

The Definitive Statement for Public Byway Open to all Traffic No. 14 Wilburton shall be amended as follows:

Commences at the Wilburton Parish Boundary and the junction with Witchford BOAT 7 at Ordnance Survey Grid Reference TL 4920 7757 and runs in a generally southerly direction along New Road for approximately 253 metres to a junction with Pools Road (public road) at TL 4922 7732.

Width: Varying between 5 metres and 8.3 metres as more particularly described in part II of the Schedule to The Cambridgeshire County Council (Public Byways Open to All Traffic No. 7 Witchford and No. 14 Wilburton) Modification Order 2018.

Dated 14th NOVEMBER 2018

Wildlife and Countryside Act 1981

**The Cambridgeshire County Council (Public Byways Open to All Traffic No. 7
Witchford and No. 14 Wilburton) Modification Order 2018**