



Public Health
England

Protecting and improving the nation's health

Suspected and laboratory confirmed reported norovirus outbreaks in hospitals (England) and norovirus laboratory reports (England and Wales): weeks 5 to 8, 2019

Health Protection Report

Volume 13 Number 17

Corrected version published 20 May 2019

Suspected and laboratory confirmed reported norovirus outbreaks in hospitals: outbreaks occurring in weeks 5 to 8, 2019 (England)

The hospital norovirus outbreak reporting scheme (HNORS) recorded 28 outbreaks occurring between weeks 05 and 08 2019, all of which led to ward/bay closure or restriction to admissions and 20 of which (71 per cent) were recorded as laboratory confirmed due to norovirus. From week 1 (week beginning 31 December 2018) to week 8 (week beginning 18 February 2019), 63 outbreaks have been reported. Ninety-eight per cent (62) of reported outbreaks resulted in ward/bay closures or restrictions to admissions and seventy-eight per cent (49) were laboratory confirmed as due to norovirus.

Suspected and laboratory-confirmed reported norovirus outbreaks in hospitals in England, with regional breakdown: outbreaks occurring in weeks 1-8 2019

PHE Centre	Outbreaks between weeks 05-08/2019			Outbreaks between weeks 01-08/2019		
	Outbreaks	Ward/bay closure †	Lab confirmed	Outbreaks	Ward/bay closure †	Lab confirmed
East of England						
East Midlands	4	4	1	9	9	5
London						
North East	6	6	5	11	10	10
North West	3	3	3	15	15	14
South East	10	10	9	14	14	13
South West	2	2	2	8	8	6
West Midlands	3	3		6	6	1
Yorkshire and Humberside						
Total	28	28	20	63*	62*	49*

† Note: not all outbreaks result in whole wards closures, some closures are restricted to bays only

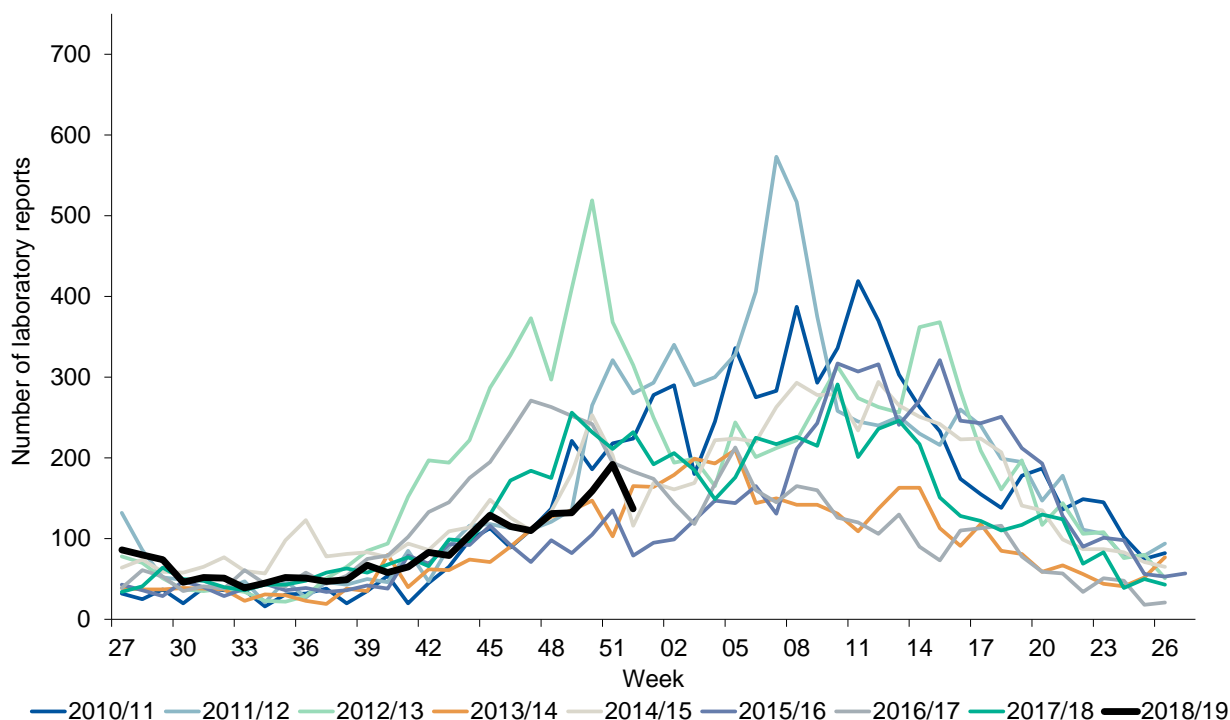
* Note: not all outbreaks are reported in real time; therefore the cumulative number of outbreaks may be higher than the sum of this reporting period (weeks 05-08) and the totals published in the last reporting period (weeks 01-04).

Norovirus laboratory reporting: data from SGSS (England and Wales)

From week 1, 2018 to week 8, 2019 there were 1491 laboratory reports of norovirus. This is comparable to the average number of laboratory reports for the same period in the five years between 2014 and 2018 (1461).

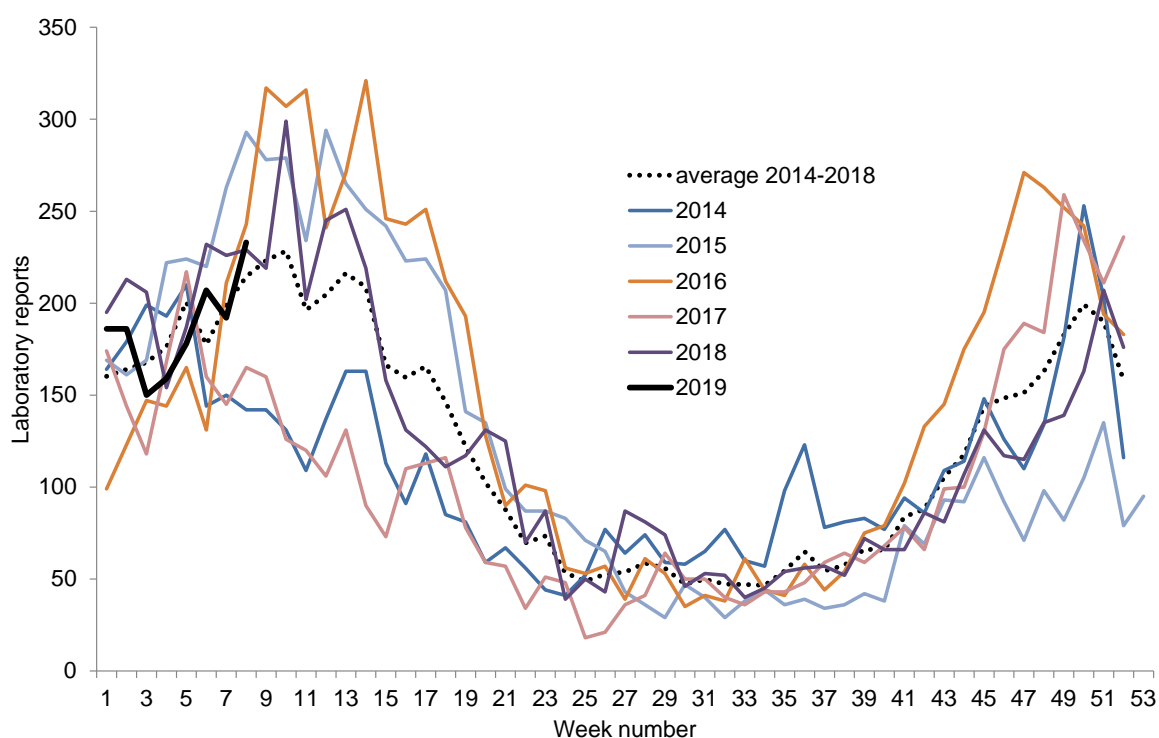
Note: Data from laboratory reporting are subject to a reporting delay and the number reported in the most recent weeks is likely to rise as further laboratory reports are received.

Figure 1: Seasonal comparison of laboratory reports of norovirus 2010/11-2018/19 (England and Wales)



Note. The norovirus season runs from week 27 in year 1 to week 26 in year 2, i.e. week 27 2016 – week 26 2017 July to June, in order to capture the winter peak in one season.

Figure 2: Current weekly norovirus laboratory reports compared to weekly mean reports 2014-2019 (England and Wales)



About Public Health England

Public Health England exists to protect and improve the nation's health and wellbeing, and reduce health inequalities. We do this through world-class science, knowledge and intelligence, advocacy, partnerships and the delivery of specialist public health services. We are an executive agency of the Department of Health, and are a distinct delivery organisation with operational autonomy to advise and support government, local authorities and the NHS in a professionally independent manner.

About Health Protection Report

Health Protection Report is a national public health bulletin for England and Wales, published by Public Health England. It is PHE's principal channel for the dissemination of laboratory data relating to pathogens and infections/communicable diseases of public health significance and of reports on outbreaks, incidents and ongoing investigations.

Public Health England, Wellington House, 133-155 Waterloo Road, London SE1 8UG
Tel: 020 7654 8000 www.gov.uk/phe
[Twitter: @PHE_uk](https://twitter.com/PHE_uk) Facebook: www.facebook.com/PublicHealthEngland

Queries relating to this document should be directed to:
noroOBK@phe.gov.uk

© Crown copyright 2019

You may re-use this information (excluding logos) free of charge in any format or medium, under the terms of the Open Government Licence v3.0. To view this licence, visit [OGL](https://www.ogil.io) or email psi@nationalarchives.gsi.gov.uk. Where we have identified any third party copyright information you will need to obtain permission from the copyright holders concerned.

Published May 2019 (corrected version 2)
PHE publications
gateway number: 2018780

PHE supports the UN
Sustainable Development Goals

