


South East Midlands





Our modern Industrial Strategy sets out our long-term plan to boost productivity by backing business to create high quality, well-paid jobs throughout the United Kingdom with investment in skills, industries and infrastructure.

In the South East Midlands a partnership of business and civic leaders – alongside other local partners – is working with the government to build on existing strengths, help business to flourish, and grow skills and opportunities for workers across the area.

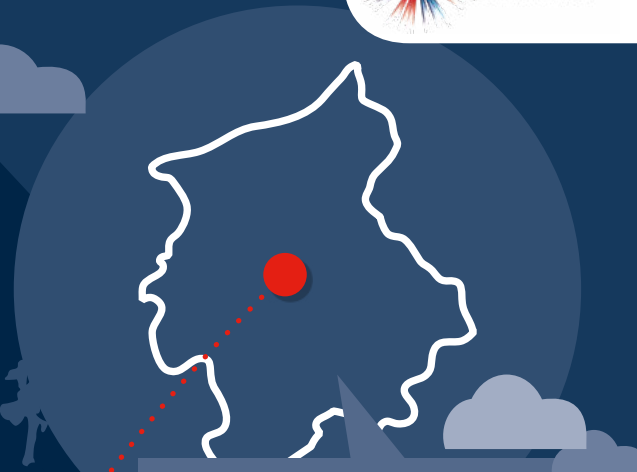
Industrial Strategy highlights include:

 **£5m** to Millbrook Proving Ground to develop new vehicle testing facilities

 Investing in new road and rail links between Oxford and Cambridge.

 **£28m** to develop a new Institute of Digital Technology (IoT) at Bletchley Park, which will help lead the way in advancing digital skills.

 **1,025,000** people in employment, an increase of **111,400** since 2010. **50,500** workers directly benefiting from the National Living and Minimum Wages. **16,450** apprenticeships starts last year.



Population: 2,017,000
Businesses: 93,690

Case study: Multi-User Environment for Autonomous Vehicle Innovation (MUEAVI)

The MUEAVI is a purpose-built transport corridor running through Cranfield University campus. Benefitting from £3m of funding, it is an experimental facility for the rapid development of on and off highway, ground and airborne autonomous solutions including vehicles infrastructure, data, logistics, environment, sensors and their implementation and management. Clients currently using the facility include Nissan, Oxbotica, Jaguar Land Rover, Honda and Westfield, and CORAM projects led by Innovate UK.

For more examples go to bit.ly/IS-map

The South East Midlands Local Enterprise Partnership is now working with the government to develop its Local Industrial Strategy.

South East Midlands Local Enterprise Partnership is a trailblazer in developing its Local Industrial Strategy as part of the family of strategies covering the Oxford-Cambridge Arc.