


Greater Lincolnshire





Our modern Industrial Strategy sets out our long-term plan to boost productivity by backing business to create high quality, well-paid jobs throughout the United Kingdom with investment in skills, industries and infrastructure.


In Greater Lincolnshire a partnership of business and civic leaders – alongside other local partners – is working with the government to build on existing strengths, help business to flourish, and grow skills and opportunities for workers across the area.

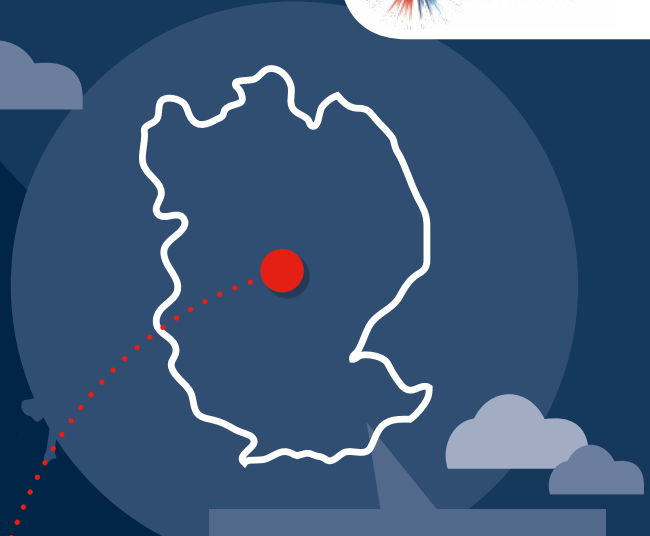
Industrial Strategy highlights include:

 **£3.4m** for the construction of Boole Technology Centre in the Lincoln Science and Innovation Park supporting innovative technology-focused small enterprises.

 **£13m** for a new transportation hub in Lincoln including a new bus station, employment space and a multi-storey car park to facilitate major city-centre redevelopment.

 **£3.5m** to accelerate housebuilding by providing the necessary infrastructure to access new and existing sites.

 **499,400** people in employment, an increase of **22,800** since 2010. **37,100** workers directly benefiting from the National Living and Minimum Wages. **8,300** apprenticeships starts last year.



Population: 1,073,300
Businesses: 45,635

Case study: Holbeach Peppermint Park

A £7.3m programme of investment provides large scale economic growth for the rural area of Holbeach, including improving the safety of the Holbeach Peppermint junction, creating access to land to the east of the A151 for a residential scheme of 900 new homes, and enabling access to development land for the creation of the South Lincolnshire Food Enterprise Zone, where the University of Lincoln's new Agri-Food Centre of Excellence will be situated.

For more examples go to bit.ly/IS-map

Greater Lincolnshire Local Enterprise Partnership is now working with the government to develop its Local Industrial Strategy.

We have committed more than £45bn to Industrial Strategy programmes supporting research, local infrastructure, training and business growth throughout the United Kingdom. This money is already starting to be spent on the ground.