

Air Quality and Dust Monitoring Monthly Report – January 2019

City of Westminster



SKANSKA



Department for Transport

High Speed Two (HS2) Limited has been tasked by the Department for Transport (DfT) with managing the delivery of a new national high speed rail network. It is a non-departmental public body wholly owned by the DfT.

High Speed Two (HS2) Limited,
Two Snowhill
Snow Hill Queensway
Birmingham B4 6GA

Telephone: 08081 434 434

General email enquiries: HS2enquiries@hs2.org.uk

Website: www.gov.uk/hs2

A report prepared by Costain Skanska on behalf of HS2 Ltd.

High Speed Two (HS2) Limited has actively considered the needs of blind and partially sighted people in accessing this document. The text will be made available in full on the HS2 website. The text may be freely downloaded and translated by individuals or organisations for conversion into other accessible formats. If you have other needs in this regard please contact High Speed Two (HS2) Limited.

© High Speed Two (HS2) Limited, 2019, except where otherwise stated.

Copyright in the typographical arrangement rests with High Speed Two (HS2) Limited.

This information is licensed under the Open Government Licence v2.0. To view this licence, visit www.nationalarchives.gov.uk/doc/open-government-licence/version/2 **OGI** or write to the Information Policy Team, The National Archives, Kew, London TW9 4DU, or e-mail: psi@nationalarchives.gsi.gov.uk. Where we have identified any third-party copyright information you will need to obtain permission from the copyright holders concerned.



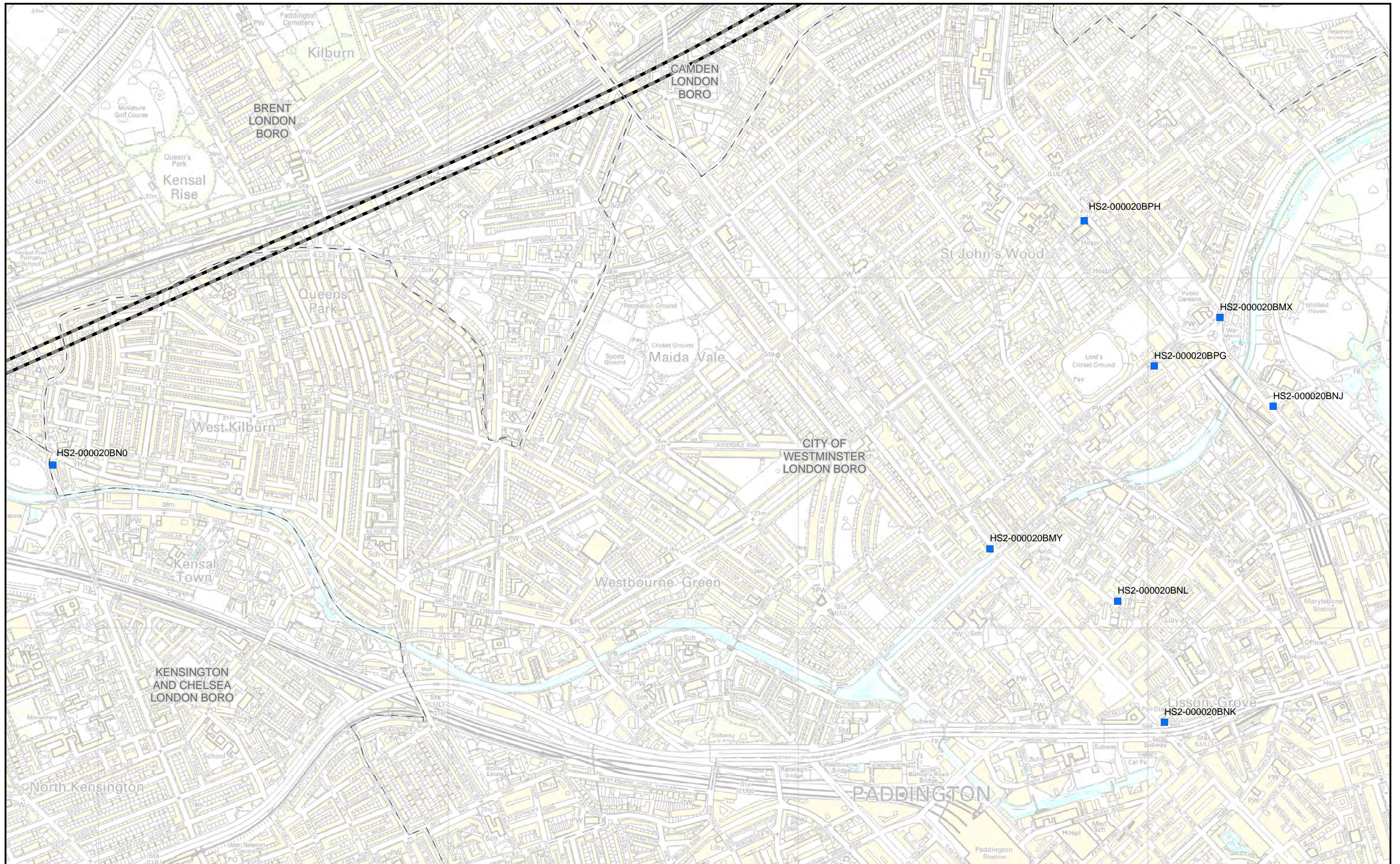
Printed in Great Britain on paper containing at least 75% recycled fibre.

Monthly Summary

- 1.1.1 This Summary Report is published in fulfilment of commitments detailed in the High Speed Rail (London-West Midlands) Environmental Minimum Requirements, Annex 1: Code of Construction Practice, for the nominated undertaker to present the results of air quality monitoring undertaken in the City of Westminster (CoW) during December 2018.
- 1.1.2 Figure 1 and Figure 2 in Appendix A indicate the current air quality monitoring locations.
- 1.1.3 This summary should be read in conjunction with the overview monitoring report available from www.gov.uk/government/collections/monitoring-the-environmental-effects-of-hs2, which highlights: the applicable standards and guidance, as well as the air quality and dust monitoring methodologies to be implemented by nominated undertakers throughout construction.
- 1.1.4 There are no current worksites located within the CoW. Therefore, no dust monitoring has been carried out.
- 1.1.5 Diffusion tube monitoring of Nitrogen Dioxide (NO₂) was undertaken at fourteen (14) locations in December 2018, around highways within the CoW as part of the management of air quality where significant effects may occur as a result of the scheme.
- 1.1.6 Diffusion tube monitoring results are provided from the laboratory analysis, and therefore still require various analysis and adjustments to be undertaken. Final corrected results will be presented and described in the annual report. However, based on the results to date, no unexpected values were recorded during the monitoring period.
- 1.1.7 NO₂ monitoring locations and results are presented in Appendix B, Table 1, together with the 2018 running mean.
- 1.1.8 There were no complaints received, relating to air quality, during this monitoring period.

Appendix A – Monitoring Locations

Figures 1 and 2: Current monitoring locations within the COW








- Legend**
-  Route in tunnel
 -  Route on surface
 -  Diffusion tube monitoring location

Figure Number: 1

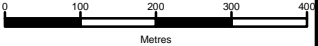
Figure Name
Worksites and Monitoring locations in COW (sheet 1)

City of Westminster

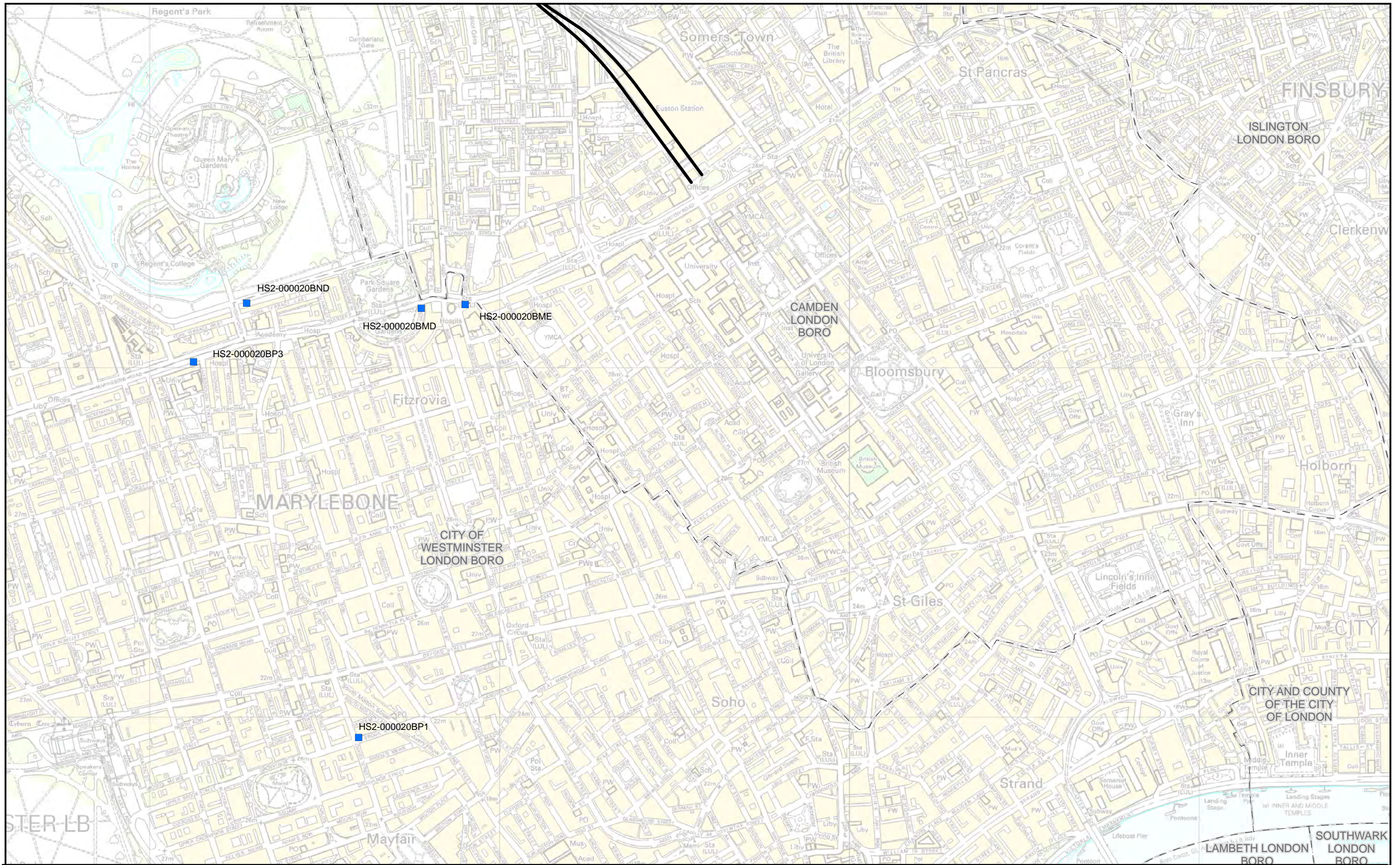
 HS2 Ltd accept no responsibility for any circumstances, which arise from the reproduction of this map after alteration, amendment or abbreviation or if it is issued in part or issued incomplete in any way.



Scale at A3: 10,000



© Crown copyright and database rights 2016.
 Ordnance Survey Licence Number 100049190.
 Map Number: 1EW02-CSJ-EV-REP-S000-000017_appA_fig1.pdf **Date: 13/07/18**



- Legend**
- Route in tunnel
 - Route on surface
 - Diffusion tube monitoring location

Figure Number: 2

Figure Name
Worksites and Monitoring locations in COW (sheet 2)

City of Westminster

HS2 Ltd accept no responsibility for any circumstances, which arise from the reproduction of this map after alteration, amendment or abbreviation or if it is issued in part or issued incomplete in any way.

Scale at A3: 10,000

Appendix B – Air Quality Monitoring Results

Table 1: NO₂ monitoring locations around highways, NO₂ concentrations and monthly monitoring results with running mean for 2018 (µg/m³)

Monitoring Site ID	Location description	Coordinates (X, Y)	Jan	Feb	Mar	Apr	May	Jun	Jul	Aug	Sep	Oct	Nov	Dec	Mean ¹
HS2-000020BMD	Lamp post on Park Crescent Road	528776, 182170	Tube missing	73	75	63	77	78	82	61	59	71	66	59	70
HS2-000020BME	Lamp post in between A501 and A4201	528901, 182180	89	99	91	79	102	100	108	81	81	87	85	75	90
HS2-000020BMX	Sign post by roundabout on A5205	527206, 182887	57	48	52	49	52	47	59	53	52	61	52	43	52
HS2-000020BMY	Lamp post between Blomfield Road and Edgware Road	526549, 182226	71	56	57	56	73	54	64	54	50	61	58	49	59
HS2-000020BNO	Lamp post on Ladbroke Grove	523869, 182465	58	52	48	51	62	53	49	44	42	45	53	48	50
HS2-000020BND	Outer Circle Regent's Park	528276, 182185	54	46	45	35	35	28	37	Tube missing	43	Tube missing	50	39	41
HS2-000020BNJ	Light post on Park Road	527359, 182633	68	58	119	59	58	56	63	54	55	58	59	48	63
HS2-000020BNK	London Underground sign outside Edgware Road Station	527048, 181731	82	80	79	57	95	88	78	74	68	Tube missing	Tube missing	Tube missing	78

¹ Note: to aid interpretation and conform with best practice, the monthly measurements in this table are reported rounded to the nearest whole number. The annual mean presented here is calculated based on laboratory data to 4 significant figures, rounded to a whole number, and therefore may differ slightly to a mean derived from averaging the rounded monthly measurements in the table.

Monitoring Site ID	Location description	Coordinates (X, Y)	Jan	Feb	Mar	Apr	May	Jun	Jul	Aug	Sep	Oct	Nov	Dec	Mean ¹
HS2-000020BNL	Lamp post on Penfold Street	526914, 182077	56	43	51	47	43	35	42	35	40	Tube missing	47	42	44
HS2-000020BP1	Lamp post on Brook Street	528597, 180942	75	Tube missing	75	67	63	60	75	62	62	53	73	67	67
HS2-000020BPG	Lamp post on St John's Wood Street	527019, 182748	50	51	52	39	50	46	40	39	36	49	54	41	46
HS2-000020BPH	Lamp post St John's Wood Terrace	526818, 183164	53	48	46	40	41	36	51	40	46	49	47	42	45
HS2-000020BQU	Lamp post outside Edgware Road Station	527048, 181731	No data	No data	No data	No data	No data	No data	No data	No data	No data	No data	67	78	73
HS2-000020BP3	Triplicate site next to the Marylebone Road kerbside automatic monitoring stations	528125, 182016	103	92	78	78	82	73	96	75	79	76	77	77	82