



Ministry
of Justice



Mortgage and Landlord Possession Statistics, in England and Wales

– Supporting Document

Last updated: February 2019

© Crown copyright
Produced by the Ministry of Justice

Alternative formats are available on request from EDS@justice.gov.uk

Contents

1. Introduction	3
2. Background to Mortgage and Landlord Possession Actions	3
3. Methodology	5
4. Seasonal Adjustment	7
5. Map information	8
6. Guide to local authority and court level CSVs	9
7. Policy changes	13
8. Additions to publication	14
9. Other useful publications and sources of possession statistics	14
10. Glossary	16
11. Data Visualisation Tool	17

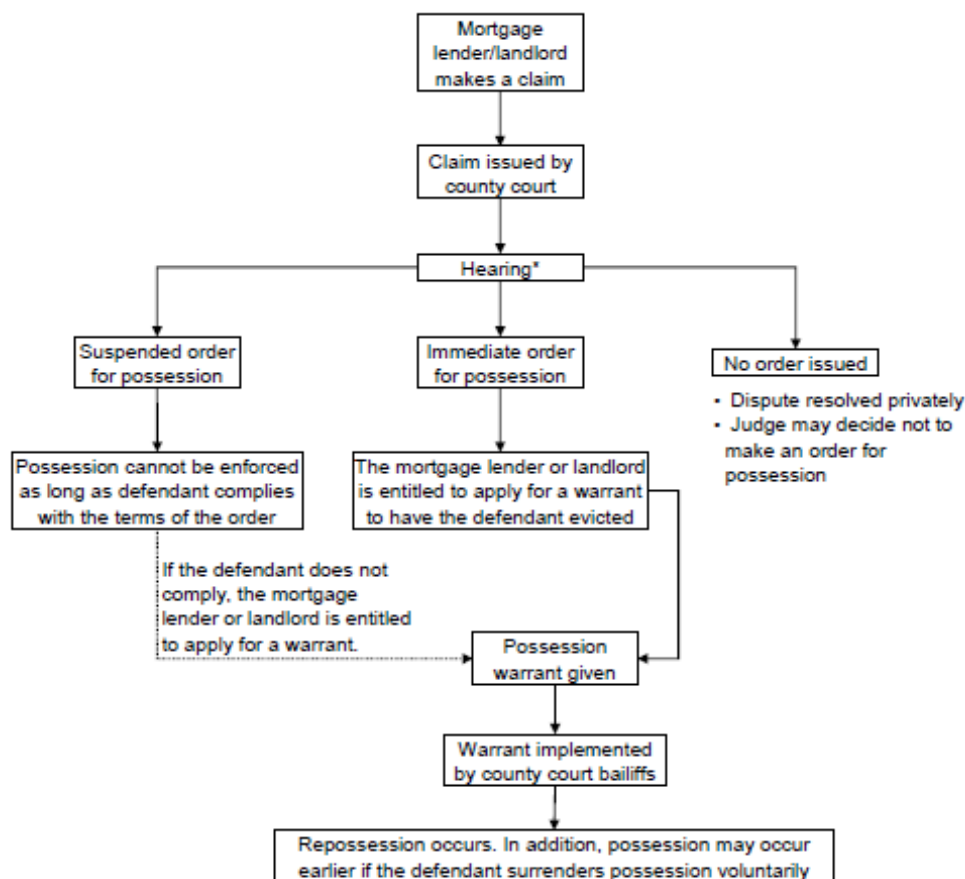
1. Introduction

This document aims to provide a guide to the Mortgage and Landlord Possession claims, focusing on concepts and definitions published in Ministry of Justice mortgage and landlord possession statistics. It also covers overall statistical publication strategy, revision policies, data sources, quality and dissemination.

2. Background to Mortgage and Landlord Possession Actions

In England and Wales the process of possessing a property by a landlord or a mortgage lender is carried out by the county courts. This only happens as a last resort after all other options of recovering the money owed have been explored. This section describes the court process of possessing a property in detail and Figure 1 provides a summary.

Figure 1: A simplified description of the main court processes for possession cases



* In cases involving a fixed-term tenancy, a landlord possession may not require a hearing under the accelerated procedure

To obtain a court order granting the entitlement to take possession of a property, a claimant – a mortgage lender or a landlord – must first make a claim for possession of property which is then issued by a county court. Generally, the issuing process

involves the arrangement of an initial hearing before a judge. At such a hearing, a judge may:

- grant an order for outright possession of the property at a date decided by the judge;
- grant a suspended order for possession of the property; or,
- grant no order for possession (for example, after deciding the claimant has no legal right to take possession of the property).

The suspended order for possession of the property usually requires the defendant to pay the latest mortgage or rent instalment, plus some of the arrears that have built up, within a certain defined period. As long as the defendant complies with the terms of the suspension, the possession order cannot be enforced.

More than one order may be granted during the course of an individual case. For example, it is possible that after an initial possession order is granted, a party may make an application to the court for the order to be varied or set aside, which could then result in another order being made.

The possession order states that that the defendant should vacate the property and that the claimant has entitlement to take possession of the property (and sometimes that costs must be paid). If the defendant will not permit or allow possession, a warrant can then be sought to have the defendant evicted by bailiffs, so taking possession of the property. Only then does a repossession occur, and is carried out in these cases by the county court bailiff.

Throughout the court process, even where a warrant for possession is issued, the claimant and defendant can still negotiate a compromise arrangement to prevent eviction.

For background information about other types of civil claims within the County Court and more general information about the county court system, please see [Civil Justice Statistics Quarterly](#).

3. Methodology

A mortgage or landlord possession action starts when a mortgage lender or landlord completes and submits a claim to the county courts to repossess a property. The court process of possessing a property broadly follows four stages:

1. A claim for a mortgage or landlord possession being issued by a mortgage lender or a landlord;
2. An order being made by the county court. This can either be an outright order that the property is to be recovered by a specific date, or a suspended order that is suspended as long as the defendant complies with conditions specified in the order;
3. If the defendant fails to leave the property by the date given in the order or does not meet the terms of a suspended order, the order may be enforced by a warrant of possession. This authorises the county court bailiff to evict the defendant from the property. The bailiff then arranges a date to execute the eviction; and
4. Repossession by a county court bailiff. Repossessions may occur without county court bailiffs, through less formal procedures, so the actual number of repossessions is usually greater than the number carried out by county court bailiffs.

Figures for each of these four processes are summarised in the Mortgage and Landlord Possession Statistics bulletin, alongside two measures of case timeliness. The first timeliness measure looks at how long it has taken (in weeks) to get to each stage in the relevant court process from the date when the claim was received, whilst the second reports how long it takes, on average, for claims to reach each stage in the process (number of quarters elapsed) alongside the proportion of claims that actually reach each stage.

Supplementary tables and CSV datasets accompany the bulletin, allowing users to analyse the data themselves. The CSV datasets contain local authority and court-level breakdowns of claims, orders, warrants and county court bailiff repossessions for England and Wales, for the full amount of time that data are available.

A CSV is also available with the data used for the maps in the publication. It gives the number of possession claims and repossessions by county court bailiffs per 100,000 households at the local authority level.

This report also includes UK wide total mortgage repossession figures from UK Finance (formally the Council of Mortgage Lenders (CML)). These are not directly comparable to the other figures in this report, which are England and Wales only and only cover county court bailiff repossessions (see [Other useful publications and sources of possession statistics](#)).

Information on the representation status of claimants and defendants in repossession cases defended, can be found in Civil Statistics Quarterly at www.gov.uk/government/collections/civil-justice-statistics-quarterly

Users of the statistics

These statistics are a leading indicator of the number of properties to be repossessed (by county court bailiffs) and the only source of sub-national possession information. In addition to monitoring court workloads, they are used to assist in the development, monitoring and evaluation of policy both nationally and locally.

The main users of these statistics are Ministers and officials in central government departments, such as the [Ministry of Housing, Communities and Local Government](#) and [HM Treasury](#). Other users include non-governmental bodies, including various voluntary organisations, with an interest in housing and homelessness, such as [Shelter](#).

Data Sources

The figures in the bulletin are based on statistical data extracted from the Case Management Information System (a data warehousing facility drawing data directly from county court-based administrative systems) and data derived from the claims made via Possession Claims Online (PCOL).

Revisions

The statistics in the latest quarter are provisional, and are therefore liable to revision to take account of any late amendments to the administrative databases from which these statistics are sourced. The standard process for revising the published statistics to account for these late amendments is as follows:

An initial revision to the statistics for the latest quarter may be made when the next edition of this bulletin is published. Further revisions may be made when the figures are reconciled at the end of the year. If revisions are needed in the subsequent year, these will be clearly annotated in the tables.

Symbols and conventions

The following symbols have been used throughout the tables in the bulletin:

- .. no data available
- (r) Revised data
- (p) Provisional data

4. Seasonal Adjustment

The publication includes seasonally adjusted figures for claims, orders, warrants and repossessions, to account for seasonal trends. Seasonal adjustments make it easier to observe the underlying trends, and other non-seasonal movements. Lags in judicial processing caused by events such as Easter or Christmas, can cause distortions to the time series.

To seasonally adjust these time series, we use X-13 ARIMA software. The X-13-ARIMA is a seasonal adjustment software developed and supported by the United States Census Bureau. The X-13 ARIMA procedure makes additive or multiplicative adjustments to create a seasonally adjusted time series.

The X-13 ARIMA works by modelling the original time series as an autoregressive moving average process (ARIMA) in order to detect and adjust for outliers and other distorting effects. It also detects and estimates for factors such as calendar effects.

The seasonally adjusted figures are bounded by benchmarking against annual figures. This preserves the annual totals in the overall yearly-grouped (quarter 1 to 4) adjusted figures. The Denton method utilised preserves the quarter to quarter difference in the original series, and distributes the seasonal adjustment in this pattern. This method allows the utilisation of the full dataset we possess (maximising the quality of the input data), and preserves the historic output data for past publications (ensuring comparisons can be made).

The output seasonally adjusted figures are tested for quality and seasonality through each run of the model. Where there are limitations with the figures, these are stated in footnotes on the relevant table.

We use seasonally adjusted figures to facilitate quarter on quarter comparisons for each possession action. This gives greater clarity to the changes and trends, allowing relative observed quarter-to-quarter changes to be noted, compared to same-quarter previous-year comparisons.

For a fuller explanation on how the X13A program seasonally adjusts time series see: <https://www.census.gov/srd/www/x13as/>; and www.ons.gov.uk/ons/guide-method/method.../guide-to-seasonal-adjustment.pdf

5. Map information

The local authority level maps used in this publication are based on the defendants' correspondence address.

Defendant address is used as a proxy for locating possession actions, however this is not a guarantee of true repossession address. Addresses that fall outside of England and Wales are not included in the mapping dataset, and classed as 'not identified' within the Local Authority CSV.

Caution is advised when using data calculated for low-population local authorities (i.e. City of London or Isles of Scilly), as small changes in numbers of possession actions can change the rate per 100,000 to a large degree due to low numbers in overall population.

For **England**, the household projections used to produce the maps are based on the Ministry of Housing, Communities, and Local Government 2014-based projections for England:

www.gov.uk/government/statistical-data-sets/2014-based-household-projections-detailed-data-for-modelling-and-analytical-purposes

- Last updated: 12 July 2016

Responsibility for household projections has subsequently transferred to ONS, and the next release is due to be published in September 2018.

For **Wales**, StatsWales' 2014-based projections (which cover all local authorities within Wales):

statswales.gov.wales/Catalogue/Housing/Households/Projections/Local-Authority/2014-Based

- Principle variant used.
- Last updated: March 2017
(updated with future projection, current projection for 2014-2039)

Both are the latest datasets available for the areas they cover.

In addition to this, the boundary lines were drawn using the Great Britain local authority districts (LADs) from the ONS Geoportal:

geoportal.statistics.gov.uk/geoportal/catalog/main/

This contains the digital vector boundaries for LADs in Great Britain as of December 2014. Therefore, the maps created may not reflect any boundary changes that may have occurred since 2016/17.

6. Guide to local authority and court level CSVs

Background

The [accompanying CSVs](#) provide the user with local authority and court-level breakdowns of claims, orders, warrants and county court bailiff repossessions for the full amount of time for which data is available. This is an aim at maximising the usage of data by users so analytical work can be carried out independently.

The data is provided in a comma separated value (CSV) machine-readable format so that it can easily be imported into analytical software packages. These packages include R, Access, SQL, SAS, up-to-date versions of Excel but not versions of Excel prior to 2007 (because of insufficient number of rows). This format enables the user to manipulate and aggregate the published data in different ways.

The two sites below are examples of some of the ways that possessions data has been used by customers:

england.shelter.org.uk/professional_resources/housing_databank
data.london.gov.uk/datastore/applications/focus-london-housing

These analyses are not products of the Ministry of Justice and are referenced for illustrative purposes only.

Below there is a full description of the variables and the list of possible values for each dataset provided. At the end there is also a short guide on how to view data through Excel PivotTables.

Local Authority level data variables

year: This is the year to which the data relates. The earliest year from which any of the data is available is 2003 because of quality concerns around the allocation of claims to a particular local authority prior to that date.

quarter: Each year is divided into four quarters and this is the quarter to which the data relates.

possession_type: This summarises whether the type of claim relates to a landlord or mortgage possession. Landlord possessions are broken down by the type of landlord and the procedure used: social landlord, private landlord, or accelerated procedure.

possession_action: This describes what the number relates to: claims, orders, warrants or repossession by a county court bailiff. Orders, in turn, are broken down by whether they were outright or suspended orders.

la_code: This is a code assigned to each local authority across government. This facilitates the incorporation of data from government departments at the local level that use the same code.

local_authority: This is the local authority of the defendant, derived from the defendant's address. Local authorities have been re-organised over time, and claims cannot be retrospectively be allocated. This means that the local authority boundaries used are the boundaries used today even for past years. This allows

for a like-for-like comparison of claim numbers in an authority over time. The dataset contains 348 local authorities, as well as a 'not identified' field.

county_ua: Where a local authority is a district within a county, the county is provided also, to allow county-level aggregation. Where the local authority is unitary in nature, the description in the county variable will be the same as in the local authority variable. The dataset contains 92 counties, as well as a 'not identified' field.

region: The region in which the local authority is located is provided, based on the Government Office regional breakdown for local authorities.

There are 10 regions, listed below, as well as a 'not identified' field:

region
East
East Midlands
London
North East
North West
South East
South West
Wales
West Midlands
Yorkshire and the Humber
Not Identified

value: This provides the number e.g. the number of claims that were issued in that local authority during that quarter.

Court level data

The court data-set consists of seven variables. This is the court where the claim was issued.

year: This is the year to which the data relates. The earliest year from which any of the data is available is 1999 for claims and orders. For warrants and repossessions the earliest year is 2000. This reflects improvements in the data quality over time.

quarter: Each year is divided into four quarters and this is the quarter to which the data relates.

possession_type: This summarises whether the type of claim relates to a landlord or mortgage possession. Landlord possessions are broken down by the type of landlord and the procedure used: social landlord, private landlord, or accelerated procedure.

possession_action: This describes what the number relates to: claims, orders, warrants or repossession by a county court bailiff. Orders, in turn, are broken down by whether they were outright orders or suspended orders.

court: This is the court through which the claim was issued. The dataset contains 216 courts, as well as a 'not identified' field.

region: This is the region in which the court lies. The regional breakdown used is from the Court and Tribunal Service (HMCTS) which allocates all courts to an

administrative region. This is different from the regional breakdown used in the local authority CSV which is the Government Office regional breakdown for local authorities.

There are 7 regions, listed below, as well as a 'not identified' field.

region
London
Midlands
North East
North West
South East
South West
Wales
Not Identified

value: This provides the number e.g. the number of claims that were issued in that local authority during that quarter.

Map data

The map csv dataset contains six variables, based on the data used for the four maps produced for the publication. The boundaries on each map are the local authorities in England and Wales.

la_code: This is a code assigned to each local authority across government. This facilitates the incorporation of data from government departments at the local level that use the same code.

local_authority: This is the local authority of the defendant (person having their home repossessed) which is derived from their address. The defendant's address is extracted through our CaseMan data-base. Therefore, the local authority level data is based on the address of the defendant going through the repossession action. The dataset contains 348 local authorities. (This field does not contain a 'not identified' field as in local_authority LA_CSV.csv)

region: The region in which the local authority is located is provided, based on the Government Office regional breakdown for local authorities (as in the LA_CSV).

map_1_mortgage_possession_claims: this is the number of mortgage possessions claims per 100,000 households in each local authority.

map_2_mortgage_repossessions: this is the number of mortgage repossessions per 100,000 households lodged in each local authority.

map_3_landlord_possession_claims: this is the number of landlord possessions claims per 100,000 households lodged in each local authority.

map_4_landlord_repossessions: this is the number of landlord repossessions per 100,000 households lodged in each local authority.

Per household figures: If you wish to calculate possessions figures per 100,000 households for yourself please see the DCLG's figures for number of households at the local authority level in Table 116 at www.gov.uk/government/statistical-data-sets/live-tables-on-dwelling-stock-including-vacants

Using Excel PivotTables (Excel ver. 2007-2016)

PivotTable is an Excel tool that allows data to be grouped from a csv file, and figures summarised and sorted by their characteristics. They are particularly useful when analysing or extracting data from large detailed datasets.

Example: – to display quarterly data for **Social Landlord Repossessions** in **Wales** and **London courts**

1. Open Court CSV file (*Court_CSV.csv*)
2. Click on **Insert** tab. Select **PivotTable** command.
3. **Create PivotTable**. In dialog box select data from csv (whole worksheet). Place PivotTable in new worksheet. Click ok
4. Drag and drop;
 - '*possession_type*' '*possession_action*' variables into '*Filters*' box (top left)
 - '*Year*' and '*Quarter*' into '*Rows*' box (bottom left)
 - '*region*' into '*Columns*' box (top right)
 - '*values*' into '*Values*' box (bottom right).
5. From '*possession_type*' field, select/check box for '**Social Landlords**'
From '*possession_action*' field, select/check '**Repossessions**'
From '*region*' field, select/check '**Wales**' and '**London**'
6. The table should now **display** number of **social landlord repossessions** for **Wales** and **London** for **all years** covered **broken down** by **quarter**.
7. Data can be manipulated by changing input variables in PivotTable fields (step 4) or selecting different variable breakdowns (step 5).

Note:

1. PivotTables sometimes displays the '*value*' field as a '**count**' (when cells are blank or non-numeric), rather than '**sum**' of the figures (when data is all numeric). If this occurs; click on 'value' box drop down menu, change '**Value Field Settings**' to from 'count' to 'sum'. This can also be changed by individual cell, by right clicking and changing the 'Value Field Settings'.
2. Excel version prior to 2007 require opening the **Data** tab rather than **Insert** at step 2 (see below)
 - a. 2. Open **Data** tab. Select **PivotTable and PivotChart** command; continue with guide as before.
3. Excel versions prior to 2007 limit number of rows to 65,536 restricting access/analysis when using larger CSV files.

7. Policy changes

New Bailiff Laws

New laws came into effect on 6 April 2014 to bring an end to bad and aggressive bailiff behaviour, while making sure businesses, local authorities and others can still fairly enforce debts owed to them. These reforms are part of a wider package under changes to the Tribunals, Courts & Enforcement Act 2007.

With roughly 4 million debts collected each year, in future only bailiffs who have been trained and received certification will be allowed to practise.

Bailiffs will be banned from entering homes at night and from using physical force against debtors. The changes will also prevent bailiffs from entering properties where only children are at home and includes further measures to protect vulnerable people. Bailiffs will be prevented from taking vital household essentials from debtor's property, such as a cooker, refrigerator or washing machines.

A new set of fixed fees for debtors has also been introduced, to end the previous situation where bailiffs were setting their own fees – sometimes at very high levels – and adding these to the amount people in debt had to pay.

Introduction of Mortgage Pre-Action Protocol

A Mortgage Pre-Action Protocol (MPAP), approved by the Master of the Rolls, for possession claims relating to mortgage or home purchase plan arrears came into effect on 19 November 2008. The protocol applies to mortgage arrears on:

- First charge residential mortgages and home purchase plans regulated by the Financial Service Authority under the Financial Services and Market Act 2000;
- Third charge mortgages for residential property and other secured loans regulated under the Consumer Credit Act 1974 on residential property; and,
- Unregulated residential mortgages.

The Protocol gives clear guidance on what the courts expect lenders and borrowers to have done prior to a claim being issued. The main aims of it were to ensure that the parties act fairly and reasonably with each other in any matters concerning the mortgage arrears, to encourage more pre action contact between lender and borrower and to enable efficient use of the court's time and resources.

The introduction of the MPAP coincided with a fall of around 50% in the daily and weekly numbers of new mortgage repossession claims being issued in the courts as evidenced from administrative records. As orders are typically made (when deemed necessary by a judge) around 7 weeks (using 2011 data) after claims are issued, the downward impact on the number of mortgage possession orders being made was seen in the first quarter of 2009.

It has not been possible to adequately quantify the long term impact of the MPAP. This reflects the lack of a good comparator (although the MPAP was not introduced in Scotland, the big lenders in Scotland also operate south of the border and so lender behaviour is likely to be the same as in England and Wales), and the existence of other factors such as changing economic conditions, other measures introduced shortly after the MPAP, and lenders desire to minimise their losses. More details about the protocol can be viewed using the link:

www.justice.gov.uk/guidance/courts-and-tribunals/courts/procedure-rules/civil/contents/protocols/prot_mha.htm

8. Additions to publication

From the October to December 2017 publication onwards, a further breakdown of average time taken for possession claims to move through each stage of the court process has been introduced. Average time taken is now broken down by order type (outright or suspended) for Mortgage Possession claims and for Landlord Possession, average time taken is now broken down by tenure (whether it is a private landlord or social landlord claim, or an accelerated claim).

Additionally, Tables 3b and 6b show cumulative percentages rather than percentages at a specific quarter.

As part of the current publication, average time taken has also been reported using both the mean and median averages. See published Tables 3a and 6a respectively for these new figures, with further insight within the commentary.

9. Other useful publications and sources of possession statistics

The Ministry statistics on court actions cover **England and Wales**.

Total **UK wide** repossessions figures are published by UK Finance (formally the Council of Mortgage Lenders (CML)) on the same date as this publication. They cover all actual repossessions across the United Kingdom (including where there is no action by county court bailiffs) and can be found at the following link:
www.cml.org.uk

The statistics shown for "properties taken into possession" are published figures from UK Finance, which is an industry body representing around 97% of the UK residential lending industry. It should be noted that:

- UK Finance statistics on actual possessions include properties surrendered voluntarily.
- Given the time lags involved, some of the court orders for the possessions shown by UK Finance may have been granted in earlier time periods.

Mortgage possessions counted in the UK Finance statistics mainly relate to the non-repayment of loans which are secured as a "first charge" against the property. The large majority of "second charge" lending (any loan secured on a property where a separate first charge loan already exists) falls outside UK Finance's membership, therefore any resulting repossessions will not be counted in their figures. A [comprehensive review](#) of statistics relating to the housing market has been published by the National Statistician's Office.

The [Bank of England](#), compile quarterly statistics aggregated from the returns from around 340 regulated mortgage lenders and administrators, providing data on their mortgage lending activities. Figures within Bank of England statistics will differ from the UK Finance estimates, due to reporting numbers of possession actions on second or subsequent charges – not covered by UK Finance membership, which can represent multiple actions against the same borrower.

For the number of repossessions and evictions in **Scotland** refer to 'Civil Justice Statistics in Scotland' publication, found at:
www.gov.scot/Publications/2016/03/6429

For the number of repossessions and evictions in **Northern Ireland** please see 'Mortgages: Action for possession' publication found at the following link:
www.courtsni.gov.uk/en-GB/Services/Statistics%20and%20Research/Pages/default.aspx

Figures relating to the **England household characteristics** (such as owner occupier or renting households etc.) can be found in Ministry of Housing, Communities, and Local Government 'English Housing Survey', found at the following link:
www.gov.uk/government/collections/english-housing-survey

10. Glossary

Accelerated Possession	Landlords can sometimes evict tenants using 'accelerated possession'. This is quicker than a normal eviction and doesn't usually need a court hearing.
Actual repossessions	Includes repossessions carried out by county court bailiffs, but also includes other repossessions.
Civil Cases	Cases that do not involve family matters or failure to pay council tax. These cases are mainly dealt with by county courts and typically relate to debt, the repossession of property, personal injury, the return of goods and insolvency. Particularly important, complex or substantial cases are instead dealt with in the high court
Claims for recovery of land	Include claims for the repossession of property by a mortgage lender, social or private landlord for example, where the mortgagee or tenant fails to keep up with mortgage or rental payments.
Possession Order (Social Landlord)	The court, following a judicial hearing may grant an order for outright possession of land. This entitles the claimant to apply for a warrant to have the defendant evicted, except in the case of suspended orders. Claims can be in relation to mortgages or landlords. A Social Landlord order is used for standard claims that relate to social landlords, this includes local authorities and housing associations.
Repossessions by county court bailiffs:	Once a warrant has been issued county court bailiffs can repossess the property on behalf of the claimant
Suspended Orders	A mortgage possession action which has been suspended as a result of an agreed payment plan between the borrower and lender.
Warrant of possession	To enforce a court order for the possession of property or land.

11. Data Visualisation Tool

Introduction

As part of our wider work on improving data visualisation and accessibility, we have developed a data visualisation tool which sits on top of the data underlying the publication and its associated csv files - the tool provides users with the capability to:

- interrogate the published information easily at a lower level of detail, e.g. by local authority; and
- access and produce a range of charts specific to their user requirements.

Guide to the tool

The tool displays the latest published statistics on possession actions by county courts and repossessions by county court bailiffs in England and Wales.

It allows users to investigate aspects of Mortgage and Landlord possession actions, such as:

- Workload in the county courts of England and Wales by possession type and possession action
- Rates of possession action (per 100,000 households) by possession type and by geographical area (regional/local authority).

The tool also allows data to be interrogated at a lower level than is presented within the publication e.g.

- Regional breakdown of figures for possession type/action.
- Local Authority breakdown of figures for possession type/action.

To help understand the terminology, a glossary is available alongside a notes and context page which provides extra information, accessible all areas of the tool.

Data

The data within the tool are sourced from the accompanying csv files published alongside Mortgage and Landlord Possession Statistics Quarterly (see link above), with the exception of the geolocation data for courts and local authority household projections, which are publicly available (see section 5).

How to use the tool

The tool allows you to explore and focus down on the available data in a dynamic way. To do this, each page has a set of filters on the right hand side. The exact filters vary from page to page, but some examples are:

- Possession Type (Mortgage or Landlord, and the sub-set of Social, Private and Accelerated landlord actions)
- Possession Action: filter by possession actions, i.e. Claims, Orders (outright or suspended), Warrants, or Repossession by County Court bailiff
- Date range: allows you to choose a range of quarters for which you want to see the data
- Geographical area: England and Wales, Regional, or Local Authority

Each table and chart is set up to allow you to either hover, select, filter or highlight relevant data. Descriptions of how to interact with the chart are provided in the chart title.

To navigate around the tool, choose the tabs at the top of the screen.

How to send us your feedback

We welcome any comments you have about the data visualisation tool, including your views on how the tool can be improved, e.g. are there better ways of presenting the information or certain aspects of it?

Enquiries and feedback should be directed to Civil and Administrative Justice Statistics using the details below:

Email: CAJS@justice.gov.uk

or

Bridgette Miles, Head of Civil, Family and Administrative Statistics

Justice Statistics Analytical Services
Ministry of Justice 3rd Floor
10 South Colonnade, London, E14 4QQ

Next Release

The data visualisation tool is scheduled to be updated on **9 May 2019** to include data up to the period January to March 2019