



EU Type Examination Certificate Number: **0120/SGS0174**

Carlo Gavazzi Controls S.p.A

Via Safforze 8
32100 Belluno
Italy

Instrument Identification:
EM112 Series

Instrument Traceable Number
0120/SGS0174

Single Phase, Active Import (kWh), Multifunction, Indoor, Electricity Meter

has been assessed and certified as meeting the requirements of

EU Directive 2014/32/EU **on Measuring Instruments Annex II, Module B**

It is certified that the manufacturer's technical design and specimen for the above instrument has been examined and, based on the evidence submitted, it is considered that the instrument conforms to the requirements of
Annex V of EU Directive 2014/32/EU

This certificate must be used in conjunction with a certificate covering the product verification as required in
Annex II, Module D or Annex II, Module F


This certificate is valid until 13th May 2025
Issue 4

Certification is based on report number(s) SHES141200635401 dated 14th May 2015,
SHES160200092501 dated 16th March 2016
EMA203792

Authorised Signature


SGS United Kingdom Limited, Notified Body 0120
Unit 202B Worle Parkway, Weston-super-Mare, BS22 6WA UK
t +44 (0)1934 522917 f +44 (0)1934 522137 www.sgs.com

Contact Address SGS United Kingdom Ltd, Units 12A & 12B, South Industrial Estate, Bowburn, Durham, DH6 5AD UK
t +44 (0)191 377 2000 f +44 (0)191 377 2020 www.sgs.com

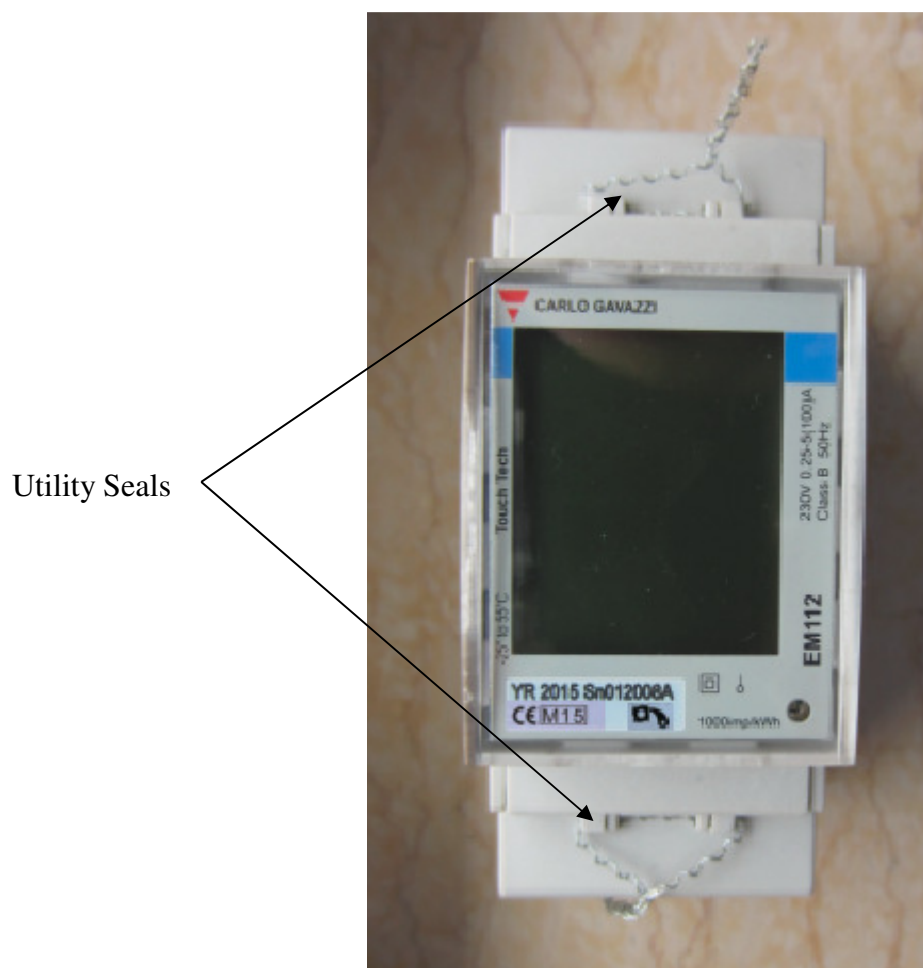
	EU-Type Examination Certificate Number:	
	0120/ SGS0174	
	Issue Number: 4	Dated: 26 th June 2018


1. Technical Data

Manufacturer	Carlo Gavazzi Controls S.p.A
Meter Type(s)	EM112-DIN.AV0.1.X.O1.PF.A EM112-DIN.AV0.1.X.S1.PF.A EM112-DIN.AV0.1.X.M1.PF.A EM112-DIN.AV0.1.X.O1.PF.B EM112-DIN.AV0.1.X.S1.PF.B EM112-DIN.AV0.1.X.M1.PF.B
Voltage Rating (U_n)	230V
Current Rating ($I_{min} - I_{ref} (I_{max})$)	0.25-5(100)A
Frequency (F_n)	50Hz
Active Accuracy Class (kWh)	A or B (kWh)
Type of circuit	1p2w
Temperature Range	-25°C to +55°C
Software Version No.'s.	EM112-DIN.AV0.1.X.O1.PF.A: AA.02 Checksum : CC94H EM112-DIN.AV0.1.X.S1.PF.A: AB.03 Checksum : 9EDAH EM112-DIN.AV0.1.X.M1.PF.A: AC.02 Checksum : 4FD6H EM112-DIN.AV0.1.X.O1.PF.B: BA.04 Checksum : 54E0H EM112-DIN.AV0.1.X.S1.PF.B: BB.05 Checksum : 419BH EM112-DIN.AV0.1.X.M1.PF.B: BC.04 Checksum : 90BDH
Identification Location	LCD
Bill Of Materials No.'s	EM112-DIN.AV0.1.x.O1.PF.B: D116014-01 V.01 EM112-DIN.AV0.1.x.M1.PF.B: D116015-01 V.02 EM112-DIN.AV0.1.x.S1.PF.B: D116016-01 V.01
IP Rating	IP51
Insulation Protective Class	Class II
LED Pulse Constant	1000imp/kWh
Impulse Voltage Rating	6kV
AC Voltage Rating	4kV
Main Cover Sealing Type	2 x Wire & Crimp
Integrity of meter	Inaccessible without breaking seals
Intended Location of the Meter	Indoor
Type of Register	LCD

	EU-Type Examination Certificate Number:	
	0120/ SGS0174	
	Issue Number: 4	Dated: 26 th June 2018

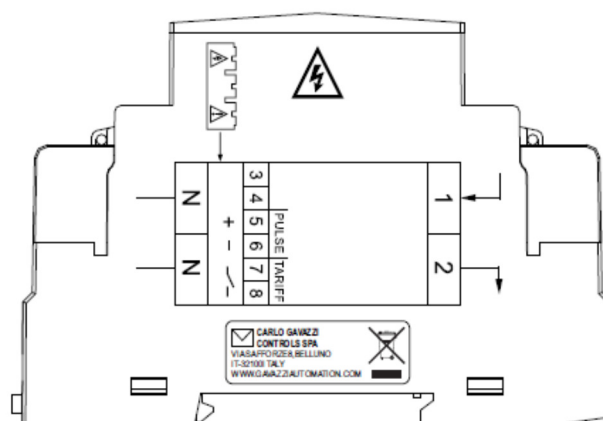
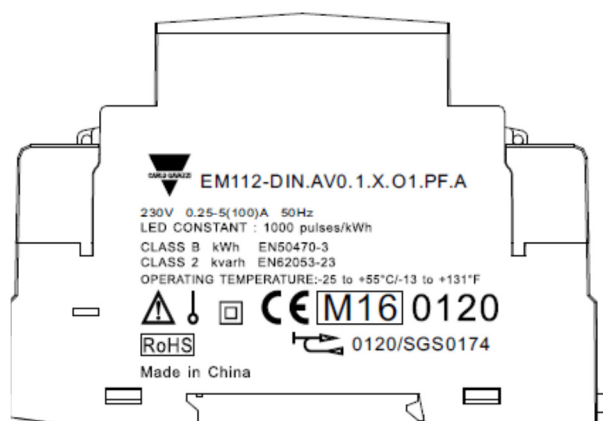
2. Photograph of Meter and Sealing Plan




	EU-Type Examination Certificate Number:	
	0120/ SGS0174	
	Issue Number: 4	Dated: 26 th June 2018

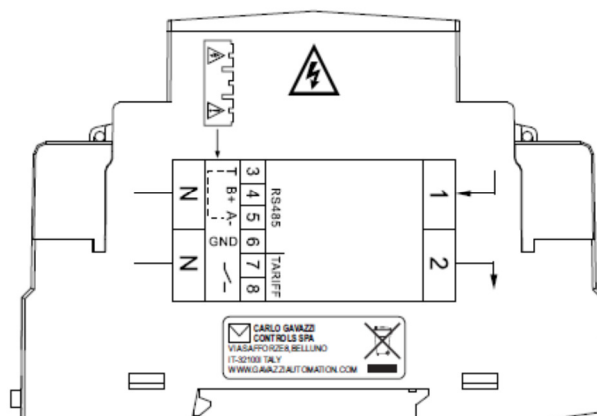
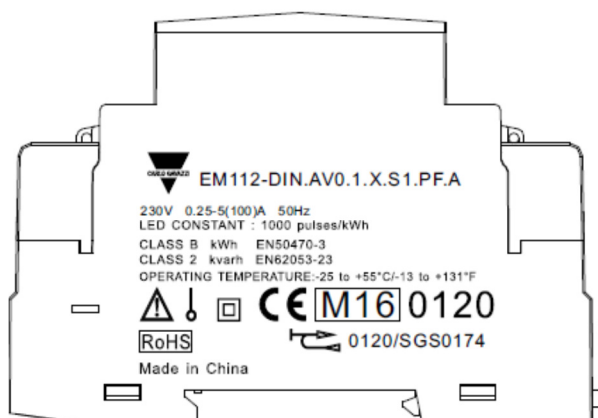
3. Name-plates


EM112-DIN.AVO.1.X.O1.PF.A



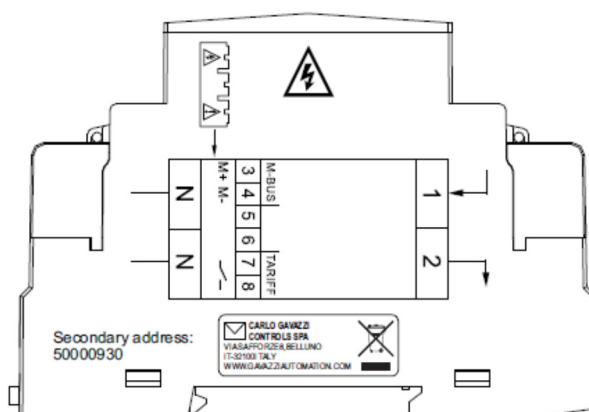
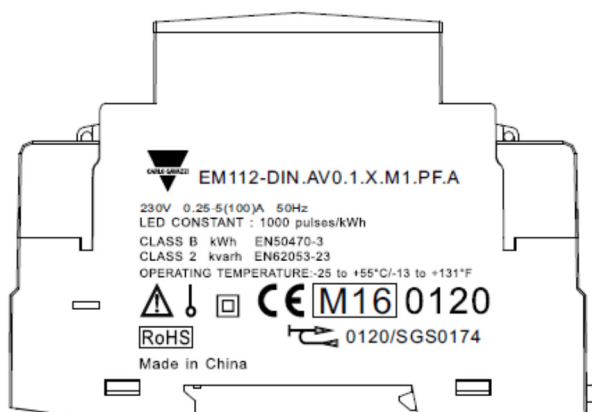
	EU-Type Examination Certificate Number:	
	0120/ SGS0174	
	Issue Number: 4	Dated: 26 th June 2018


EM112-DIN.AVO.1.X.S1.PF.A



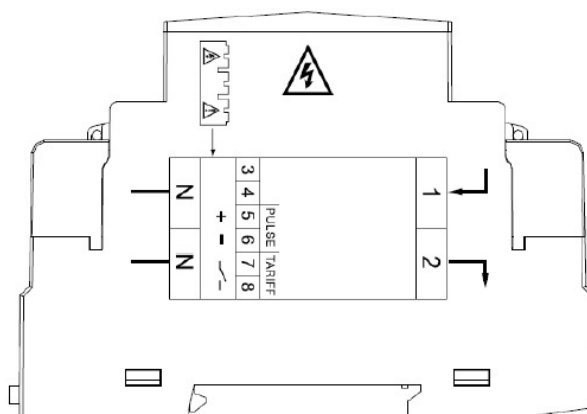
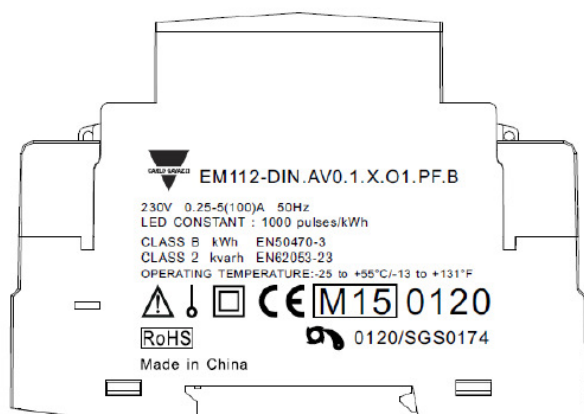
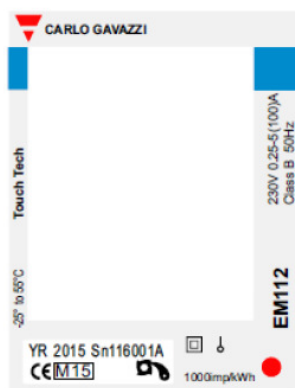
	EU-Type Examination Certificate Number:	
	0120/ SGS0174	
	Issue Number: 4	Dated: 26 th June 2018


EM112-DIN.AVO.1.X.M1.PF.A



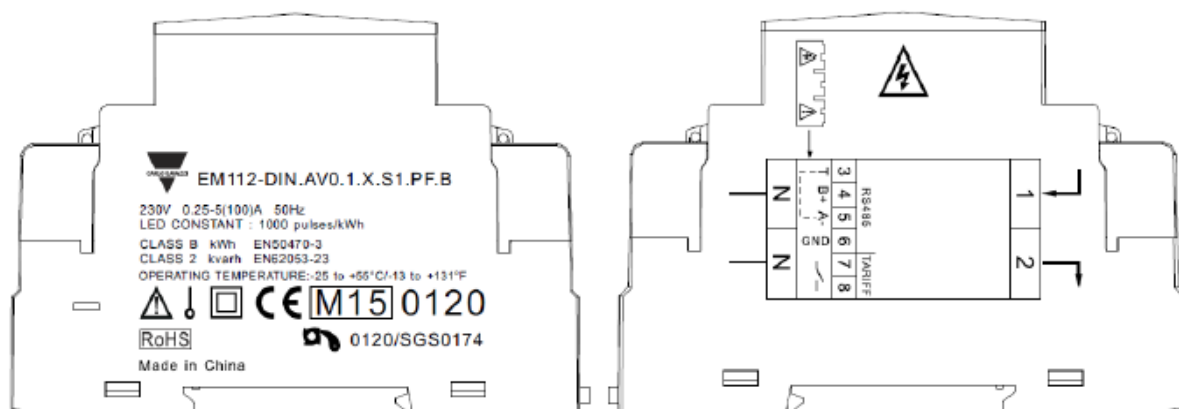
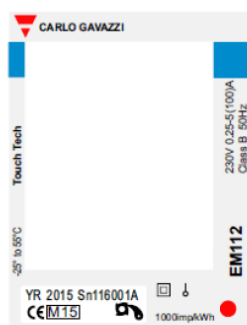
	EU-Type Examination Certificate Number:	
	0120/ SGS0174	
	Issue Number: 4	Dated: 26 th June 2018


EM112-DIN.AV0.1.X.O1.PF.B



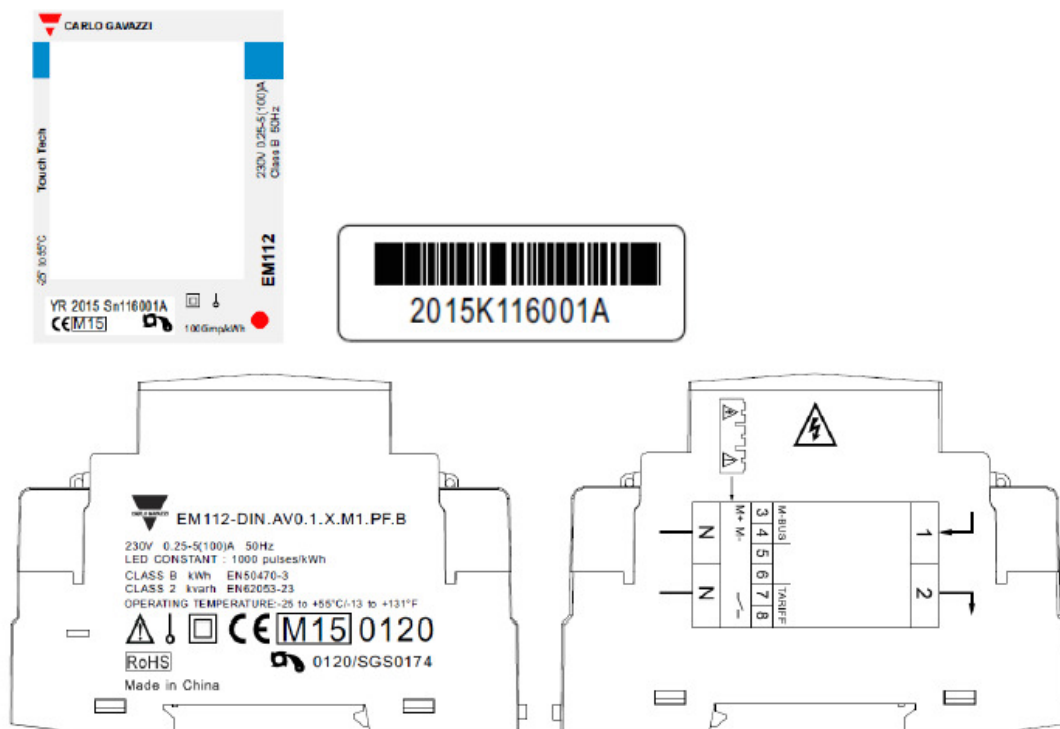
	EU-Type Examination Certificate Number:	
	0120/ SGS0174	
	Issue Number: 4	Dated: 26 th June 2018


EM112-DIN.AV0.1.X.S1.PF.B



	EU-Type Examination Certificate Number:	
	0120/ SGS0174	
	Issue Number: 4	Dated: 26 th June 2018

EM112-DIN.AV0.1.X.M1.PF.B



	EU-Type Examination Certificate Number:	
	0120/ SGS0174	
	Issue Number: 4	Dated: 26 th June 2018

4. Influence factors for temperature, frequency and voltage


Current	PF Cos	-25 °C	-10 °C	5 °C	30 °C	40 °C	55 °C
I _{min}	1.0	0.80	0.50	0.34	0.17	0.29	0.56
I _{tr}	1.0	0.74	0.53	0.33	0.20	0.36	0.66
10I _{tr}	1.0	0.78	0.54	0.30	0.17	0.33	0.62
I _{max}	1.0	1.06	0.88	0.70	0.42	0.37	0.43
I _{tr}	0.5ind	0.82	0.60	0.18	0.19	0.38	0.62
10I _{tr}	0.5ind	0.78	0.55	0.30	0.20	0.34	0.63
I _{max}	0.5ind	0.96	0.78	0.58	0.26	0.20	0.35
I _{tr}	0.8cap	0.78	0.55	0.35	0.21	0.32	0.61
10I _{tr}	0.8cap	0.77	0.53	0.29	0.23	0.38	0.67
I _{max}	0.8cap	1.02	0.83	0.63	0.34	0.29	0.39

During the type approval examination the influence factors for temperature, frequency and voltage are determined per load point. The table above represents the sum of the square values per load, determined via the following formula:-

$$\delta e(T, U, f) = \sqrt{(\delta e^2(T, I, \cos\phi) + \delta e^2(U, I, \cos\phi) + \delta e^2(f, I, \cos\phi))}$$

where

$\delta e(T, I, \cos\phi) =$ Additional error due to variation of the temperature at the same load
 $\delta e(U, I, \cos\phi) =$ Additional error due to variation of the voltage at the same load
 $\delta e(f, I, \cos\phi) =$ Additional error due to variation of the frequency at the same load


	EU-Type Examination Certificate Number:	
	0120/ SGS0174	
	Issue Number: 4	Dated: 26 th June 2018

5. Annex of Variants

Product Variant Identification Details:

Type Designation	Description of meter
EM112-DIN.AV0.1.X.O1.PF.A	230V, 0,25-5(100)A, Pulse output. Measuring mode:A, Positive energy=positive energy+ negative energy.
EM112-DIN.AV0.1X.S1.PF.A	230V, 0,25-5(100)A, Mbus module. Measuring mode:A Positive energy=positive energy+ negative energy.
EM112-DIN.AV0.1.X.M1.PF.A	230V, 0,25-5(100)A, Modbus module. Measuring mode:A, Positive energy=positive energy+ negative energy.
EM112-DIN.AV0.1.X.O1.PF.B	230V, 0.25-5(100)A, Pulse output
EM112-DIN.AV0.1.X.M1.PF.B	230V, 0.25-5(100)A, Mbus module
EM112-DIN.AV0.1.X.S1.PF.B	230V, 0.25-5(100)A, Modbus module

Modifications to the meter(s) described according to approval No.**0120/ SGS0174** must be notified to the issuing body to confirm the meter(s) continuing compliance to the relevant pattern approval standard(s).

	EU-Type Examination Certificate Number:	
	0120/ SGS0174	
	Issue Number: 4	Dated: 26 th June 2018

6. Document Revision History

Issue	Date	Comments
1	14/05/2015	Initial Issue
2	16/03/2016	Software version change. Minor component change for EM112-DIN.AV0.X.M1.PF.B (Mbus module version).
3	02/11/2016	Additional types added to approval EM112-DIN.AV0.1.X.O1.PF.A EM112-DIN.AV0.1X.S1.PF.A EM112-DIN.AV0.1.X.M1.PF.A
4	26/08/2018	New software versions and checksum numbers

This document is issued by the Company subject to its General Conditions for Certification Services, available on request or accessible at <http://www.sgs.com/en/Terms-and-Conditions.aspx>.

Attention is drawn to the limitation of liability, indemnification and jurisdiction issues defined therein. Any holder of this document is advised that information contained hereon reflects the Company's findings at the time of its intervention only and within the limits of Client's instructions, if any. The Company's sole responsibility is to its Client and this document does not exonerate parties to a transaction from exercising all their rights and obligations under the transaction documents. This document cannot be reproduced except in full, without prior written approval of the Company. Any unauthorized alteration, forgery or falsification of the content or appearance of this document is unlawful and offenders may be prosecuted to the fullest extent of the law.

Unless otherwise stated the results shown in this test report refer only to the sample(s) tested *and such sample(s) are retained for 28 days only*.