

EC Type Examination Certificate Number: **0120/SGS0158**

Foxytech Sp. z o.o

ul. Stanisława Wokulskiego 11
58-100 Świdnica
Poland
NIP 8842750295

Instrument Identification:
FOX 1.000

Single phase, Active, Import/Export (kWh), Electricity Meter

Instrument Traceable Number
0120/ SGS0158

has been assessed and certified as meeting the requirements of

EC Directive 2004/22/EC **on Measuring Instruments Annex B**

It is certified that the manufacturer's technical design and specimen for the above instrument has been examined and, based on the evidence submitted, it is considered that the instrument conforms to the requirements of MI-003 of EC Directive 2004/22/EC

This certificate must be used in conjunction with a certificate covering the product verification as required in Annex D or Annex F.

This certificate is valid from 22nd July 2015 until 10th December 2024
Issue 2

Certification is based on report number(s) EMA192579/1 Issued 11th December 2014


Authorised Signature

J Saunders




SGS United Kingdom Limited, Notified Body 0120
Unit 202B Worle Parkway, Weston-super-Mare, BS22 6WA UK
t +44 (0)1934 522917 f +44 (0)1934 522137 www.sgs.com

Contact Address
SGS United Kingdom Ltd, Units 12, South Industrial Estate, Bowburn, Durham, DH6 5AD, UK
t +44 (0)191 377 2000 f +44 (0)191 377 2020 www.sgs.com

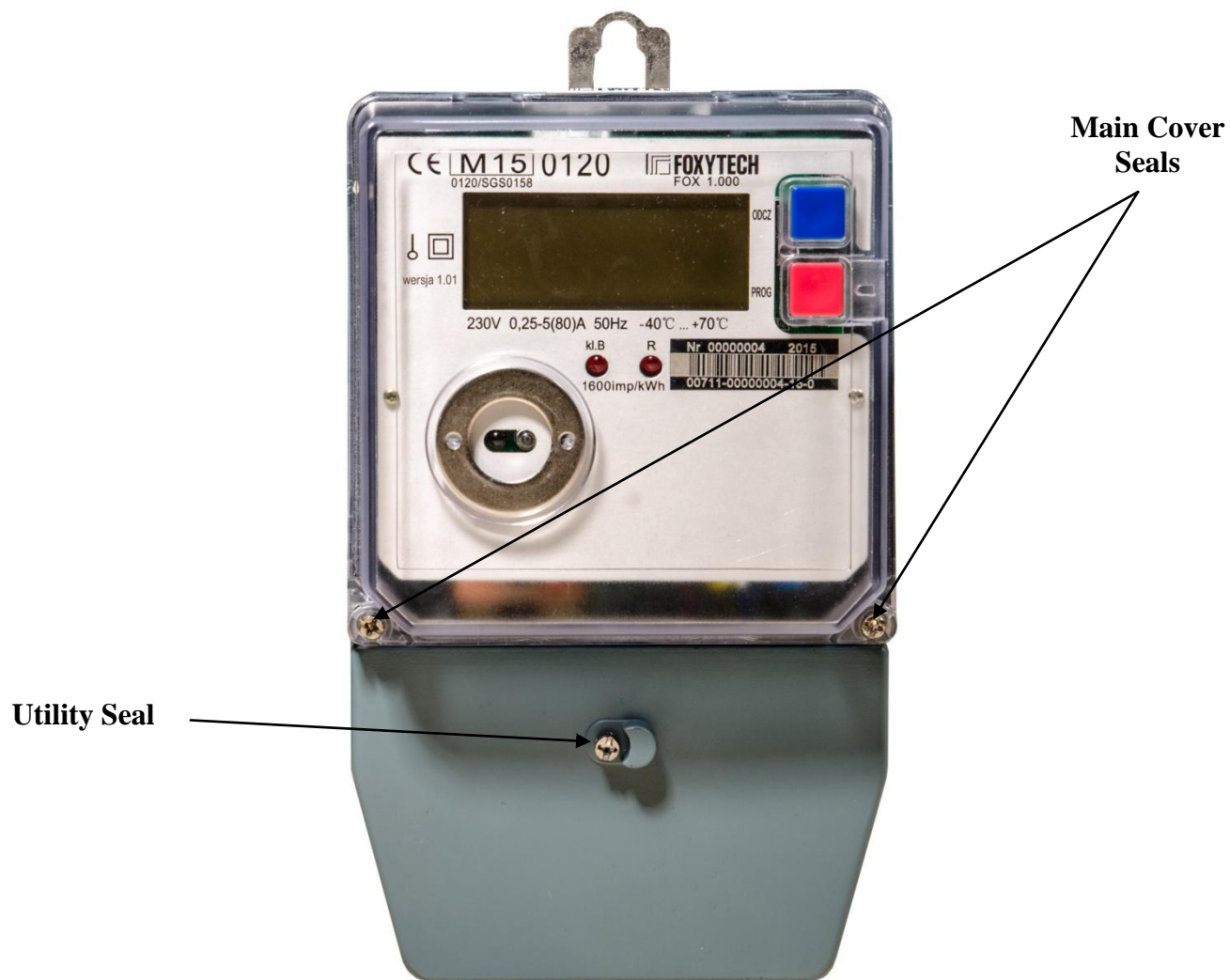
	EC-Type Examination Certificate Number:	
	0120/ SGS0158	
	Issue Number: 2	Dated: 22 th July 2015


1. Technical Data

Manufacturer	Foxytech Sp z o.o.
Meter Type	FOX 1.000
Voltage Rating (U_n)	230V
Current Rating ($I_{min} - I_{ref} (I_{max})$)	0,25-5(80)A 0,50-10(80)A 0,75-15(80)A or I_{max} smaller than or equal to 80A and at least 5 times higher than reference current (I_{ref})
Frequency (F_n)	50Hz
Active Accuracy Class (kWh)	A or B(kWh)
Type of circuit	1p2w
Temperature Range	-40°C to +70°C
Software/ Firmware Version No	V1.01
Identification Location	LCD and Nameplate
Bill Of Materials Number	11-X42-01VS1.5
IP Rating	IP54
Insulation Protective Class	Class II
LED Pulse Constant	1600imp/ kWh
Impulse Voltage Rating	6kV
AC Voltage Rating	4kV
Main Cover Sealing Type	2 x Wire & Crimp + Holographic adhesive label on top of the meter
Terminal Cover Sealing Type	1 x Wire & Crimp
Integrity of meter	Inaccessible without breaking seals
Intended Location of the Meter	Indoor
Type of Register	LCD
Terminal Arrangement(s)	DIN

	EC-Type Examination Certificate Number:	
	0120/ SGS0158	
	Issue Number: 2	Dated: 22 th July 2015

2. Photograph of Meter and Sealing Plan




	EC-Type Examination Certificate Number:	
	0120/ SGS0158	
	Issue Number: 2	Dated: 22 th July 2015



Holographic Adhesive security label



	EC-Type Examination Certificate Number:	
	0120/ SGS0158	
	Issue Number: 2	Dated: 22 th July 2015

3. Calculation of the composite error/ MPE


During the type approval examination the influence factors for temperature, frequency and voltage are determined per load point. The table below represents the sum of the square values per load, determined via the following formula:-

$$\delta e(T, U, f) = \sqrt{(\delta e^2(T, I, \cos\phi) + \delta e^2(U, I, \cos\phi) + \delta e^2(f, I, \cos\phi))}$$

where

$\delta e(T, I, \cos\phi) =$ Additional error due to variation of the temperature at the same load
 $\delta e(U, I, \cos\phi) =$ Additional error due to variation of the voltage at the same load
 $\delta e(f, I, \cos\phi) =$ Additional error due to variation of the frequency at the same load

		Influence Factors for temperature, frequency and voltage							
Current	PF Cos	-40	-25	-10	5	30	40	55	70
I _{min}	1.0	0.56	0.37	0.32	0.19	0.16	0.26	0.46	0.54
I _{tr}	1.0	0.70	0.46	0.43	0.32	0.08	0.23	0.37	0.63
10I _{tr}	1.0	0.75	0.62	0.49	0.30	0.11	0.26	0.43	0.69
I _{max}	1.0	0.68	0.57	0.49	0.31	0.11	0.22	0.39	0.65
I _{tr}	0.5ind	0.73	0.43	0.40	0.27	0.07	0.25	0.37	0.64
10I _{tr}	0.5ind	0.80	0.66	0.47	0.27	0.10	0.21	0.48	0.71
I _{max}	0.5ind	0.76	0.65	0.49	0.30	0.08	0.15	0.40	0.65
I _{tr}	0.8cap	0.71	0.53	0.37	0.24	0.09	0.16	0.37	0.63
10I _{tr}	0.8cap	0.82	0.68	0.49	0.29	0.09	0.20	0.46	0.72
I _{max}	0.8cap	0.77	0.65	0.48	0.32	0.10	0.19	0.39	0.65

	EC-Type Examination Certificate Number:	
	0120/ SGS0158	
	Issue Number: 2	Dated: 22 th July 2015

4. Annex of Variants

Product Variant Identification Details:

Type Designation	Description of meter
------------------	----------------------

FOX 1.000	230V 0,25-5(80)A 0,50-10(80)A 0,75-15(80)A Single phase, Active, Import/Export (kWh)
-----------	--

Modifications to the meter(s) described according to approval No.**0120/ SGS0158** must be notified to the issuing body to confirm the meter(s) continuing compliance to the relevant pattern approval standard(s).

5. Document Revision History

Issue	Date	Comments
1	11/12/2014	Initial Issue
2	22/07/2015	Software update in application software and addition of destroyable holographic seal to the top of the meter