

## High Speed Rail (West Midlands - Crewe)

Supplementary Environmental Statement 2 and  
Additional Provision 2 Environmental Statement

Volume 5: Technical appendices

Cultural heritage baseline report (CH-001-000)

## **High Speed Rail (West Midlands - Crewe)**

Supplementary Environmental Statement 2 and  
Additional Provision 2 Environmental Statement  
Volume 5: Technical appendices

Cultural heritage baseline report (CH-001-000)



## Department for Transport

High Speed Two (HS2) Limited has been tasked by the Department for Transport (DfT) with managing the delivery of a new national high speed rail network. It is a non-departmental public body wholly owned by the DfT.

High Speed Two (HS2) Limited,  
Two Snowhill  
Snow Hill Queensway  
Birmingham B4 6GA

Telephone: 08081 434 434

General email enquiries: [HS2enquiries@hs2.org.uk](mailto:HS2enquiries@hs2.org.uk)

Website: [www.hs2.org.uk](http://www.hs2.org.uk)

A report prepared for High Speed Two (HS2) Limited:

ARUP



High Speed Two (HS2) Limited has actively considered the needs of blind and partially sighted people in accessing this document. The text will be made available in full on the HS2 website. The text may be freely downloaded and translated by individuals or organisations for conversion into other accessible formats. If you have other needs in this regard please contact High Speed Two (HS2) Limited.

© High Speed Two (HS2) Limited, 2019, except where otherwise stated.

Copyright in the typographical arrangement rests with High Speed Two (HS2) Limited.

This information is licensed under the Open Government Licence v2.0. To view this licence, visit [www.nationalarchives.gov.uk/doc/open-government-licence/version/2](http://www.nationalarchives.gov.uk/doc/open-government-licence/version/2) **OGL** or write to the Information Policy Team, The National Archives, Kew, London TW9 4DU, or e-mail: [psi@nationalarchives.gsi.gov.uk](mailto:psi@nationalarchives.gsi.gov.uk). Where we have identified any third-party copyright information you will need to obtain permission from the copyright holders concerned.



Printed in Great Britain on paper containing at least 75% recycled fibre.

# Contents

<b>1</b>	<b>Introduction</b>	<b>1</b>
1.1	Structure of this appendix	1
1.2	Scope of the assessment	2
1.3	Study area	2
1.4	Data sources	2
1.5	Survey undertaken	3
<b>2</b>	<b>Geology, topography and landform</b>	<b>4</b>
<b>3</b>	<b>Archaeological and historical record</b>	<b>5</b>
3.1	Introduction	5
3.2	Early prehistory	5
3.3	Late prehistory	5
3.4	Romano-British (AD43–AD410)	6
3.5	Early medieval (AD410–AD1066)	6
3.6	Medieval (AD1066–AD1540)	6
3.7	Post-medieval (AD1540–AD1901)	9
3.8	Modern (AD1901–present)	10
<b>4</b>	<b>Built heritage</b>	<b>11</b>
4.1	Introduction	11
4.2	Built heritage assets within the land required for the Parkgate grid supply point connection amendment	11
4.3	Designated built heritage assets within 2km of the land required for the Parkgate grid supply point connection amendment	12
4.4	Key non-designated built heritage assets within 500m of the land required for the Parkgate grid supply point connection amendment	21
4.5	Key built heritage assets within 2km of the land required for the Parkgate grid supply point connection amendment	22
<b>5</b>	<b>Historic landscape</b>	<b>23</b>
5.1	Introduction	23
5.2	Parks and Gardens	23
<b>6</b>	<b>Archaeological risk mapping</b>	<b>25</b>
6.1	Introduction	25

6.2	Archaeological sub-zones	25
<b>7</b>	<b>References</b>	<b>26</b>
	<b>Annex A: Historic landscape character assessment 20: Blythe Valley and Bromley</b>	<b>31</b>

# 1 Introduction

## 1.1 Structure of this appendix

- 1.1.1 This document is an appendix to the cultural heritage assessment which forms part of Volume 5 of the Supplementary Environmental Statement 2 (SES2) and Additional Provision 2 Environmental Statement (AP2 ES). It sets out baseline cultural heritage data relating to the Parkgate grid supply point connection (an AP2 amendment) in the Fradley to Colton community area (CA1).
- 1.1.2 The cultural heritage appendices comprise:
- a baseline report (this appendix);
  - a gazetteer of heritage assets (SES2 and AP2 ES Volume 5: Appendix CH-002-000); and
  - impact assessment (SES2 and AP2 ES Volume 5: Appendix CH-003-000).
- 1.1.3 In addition survey reports incorporating geophysical survey and remote sensing studies are set out in Background Information and Data<sup>1</sup> (see BID CH-004-000 SES2 and AP2 ES) which accompanies the SES2 and AP2 ES.
- 1.1.4 This report should be read with reference to the following:
- the High Speed Two (HS2) Phase 2a (West Midlands - Crewe) Environmental Statement (ES)<sup>2</sup> published in July 2017 (the main ES);
  - the High Speed Two (HS2) Phase 2a (West Midlands - Crewe) Background Information and Data (BID)<sup>3</sup> published in July 2017 (the main BID reports);
  - the High Speed Two (HS2) Phase 2a (West Midlands - Crewe) Supplementary Environmental Statement (SES1) and Additional Provision Environmental Statement (AP1 ES)<sup>4</sup> published in March 2018;
  - the High Speed Two (HS2) Phase 2a (West Midlands - Crewe) Background Information and Data<sup>5</sup> which accompanied the SES1 and AP1 ES published in March 2018; and
  - the High Speed Two (HS2) Phase 2a (West Midlands - Crewe) Background Information and Data which accompanies the SES2 and AP2 ES<sup>1</sup>.

---

<sup>1</sup> HS2 Ltd (2019), *High Speed Two (HS2) Phase 2a (West Midlands - Crewe), Background Information and Data to accompany Supplementary Environmental Statement 2 and Additional Provision 2 Environmental Statement, Volume 5: Appendix CH-004-000*, <https://www.gov.uk/government/organisations/high-speed-two-limited>

<sup>2</sup> HS2 Ltd (2017), *High Speed Two (HS2) Phase 2a (West Midlands - Crewe), Environmental Statement*, <https://www.gov.uk/government/collections/hs2-phase-2a-environmental-statement>

<sup>3</sup> HS2 Ltd (2017), *High Speed Two (HS2) Phase 2a (West Midlands - Crewe), Background Information and Data that accompanied the Environmental Statement*, <https://www.gov.uk/government/collections/hs2-phase-2a-environmental-statement#background-information-and-data>

<sup>4</sup> HS2 Ltd (2018), *High Speed Two (HS2) Phase 2a (West Midlands - Crewe), Supplementary Environmental Statement (SES1) and Additional Provision Environmental Statement (AP1 ES)*, <https://www.gov.uk/government/collections/hs2-phase-2a-supplementary-environmental-statement-and-additional-provision-environmental-statement>

<sup>5</sup> HS2 Ltd (2018), *High Speed Two (HS2) Phase 2a (West Midlands - Crewe), Background Information and Data that accompanied the Supplementary Environmental Statement (SES1) and Additional Provision Environmental Statement (AP1 ES)*, <https://www.gov.uk/government/collections/hs2-phase-2a-supplementary-environmental-statement-and-additional-provision-environmental-statement#background-information-and-data>

1.1.5 In order to differentiate between the original scheme and the subsequent changes, the following terms are used:

- 'the original scheme' – the Bill scheme submitted to Parliament in July 2017, which was assessed in the main ES;
- 'the SES1 scheme' – the original scheme with the changes described in the SES1 submitted in March 2018;
- 'the AP1 revised scheme' – the SES1 scheme as amended by the AP1 submitted in March 2018;
- 'the SES2 scheme' – the SES1 scheme with the changes described in the SES2; and
- 'the AP2 revised scheme' – the SES2 scheme as amended by the AP2.

## 1.2 Scope of the assessment

1.2.1 The baseline heritage data set out in this appendix is presented to inform the assessment of the area affected by the Parkgate grid supply point connection (provision of an overhead power line connection in a corridor between Newlands Lane autotransformer feeder station and a National grid supply point at Parkgate). This requires the inclusion of an additional corridor of land, 200–250m wide, extending approximately 7km north-eastwards from the route of the original scheme in the Fradley to Colton area commencing a short distance to the east of Stockwell Heath.

1.2.2 The cultural heritage assessment is detailed in the SES2 and AP2 ES:

- Volume 2, Community area reports;
- Volume 3, Route-wide effects; and
- Volume 5, Appendices.

1.2.3 All identified assets listed in this report are shown in the SES2 and AP2 ES Volume 5, Cultural heritage Map Book, Map Series CH-01 and CH-02.

## 1.3 Study area

1.3.1 The study area encompassing the Parkgate grid supply point connection amendment in the Fradley to Colton area lies within the districts of Lichfield, East Staffordshire and Cannock Chase, within the County of Staffordshire. It contains part of the civil parishes of Colton, Streethay, and Abbots Bromley.

1.3.2 All non-designated and designated assets within the land required for the AP2 revised scheme and within 500m of it have been detailed in this baseline report. In addition, designated heritage assets have been examined within the zone of theoretical visibility (ZTV).

## 1.4 Data sources

1.4.1 Sources examined as part of this baseline assessment include published secondary sources, cartographic sources, Historic Environment Record (HER) data for non-designated heritage assets and the Historic England National Heritage List for

designated assets. A full list of published sources can be found in the References section of this appendix.

## **1.5 Survey undertaken**

1.5.1 The following surveys were undertaken as part of the environmental impact assessment (EIA) process:

- light detection and ranging (LiDAR) survey of the majority of the land required for the Parkgate grid supply point connection amendment and land around it (see Background Information and Data, BID CH-004-000 SES2 and AP2 ES); and
- site reconnaissance field inspections to review the setting of historic assets and the character and form of the historic landscape.



## 2 Geology, topography and landform

- 2.1.1 The solid geology of the study area is dominated by rocks formed during the Triassic period (251–250 million years ago) at a time when almost all of the Earth's landmass was concentrated into the Pangea super-continent. These rocks largely comprise red, and less commonly green and grey, mudstones, siltstones and halites of the Mercia Mudstone Group. They are distributed widely across the study area, with the exception of Rugeley where deposits of Bromsgrove Sandstone predominate, interbedded with sandstone and pebble conglomerates of the Kidderminster Formation. These deposits are part of the Sherwood Sandstone Group and form the remainder of the Triassic sequence.
- 2.1.2 Solid geology within the study area is partially overlain by superficial deposits formed during the Quaternary period (2.5 million years ago) as a consequence of the repeated advance and retreat of the ice sheets. The study area is close to the margins of the last major ice sheet to have affected mainland Britain during the late Devensian period (approximately 30,000–15,000 Before Present (BP)), which largely removed evidence of earlier ice sheet activity and associated palaeodrainage. The majority of surviving superficial deposits are likely to be more recent, although isolated remnants of earlier deposits may be present. Superficial geology can be divided into three main deposit types: 1) glaciofluvial sands and gravels, including glacial outwash and river terrace deposits; 2) till; and 3) Holocene alluvium.
- 2.1.3 The Parkgate area is situated within a low-lying and gently undulating landscape. Between Fradley and Hill Ridware the route varies little between approximately 60–70m above sea level (ASL), thereafter gently increasing in elevation to approximately 100m ASL by Stockwell Heath.
- 2.1.4 In summary, the form and historic character of the present day landscape within the study area is determined primarily by geological processes, particularly during the Quaternary period, when successive glaciations scoured and deposited sediment across large parts of the landscape. Both the solid and superficial geologies have heavily influenced post-glacial soil development in the region and the vegetative cover and land use history of the study area.
- 2.1.5 The River Blithe is a defining feature of the landscape to the south of Abbots Bromley, containing significant deposits of Pleistocene sands and gravels and Holocene alluvium with significant archaeological and palaeoenvironmental potential.

## 3 Archaeological and historical record

### 3.1 Introduction

- 3.1.1 This section provides a chronological overview of the wider archaeological context of the area of the Parkgate grid supply connection amendment. This is intended to enable the potential for unidentified archaeological remains to be assessed, and their likely location and form to be identified.

### 3.2 Early prehistory

#### Palaeolithic (500,000BC–10,000BC)

- 3.2.1 There is no further information for this period to that provided in the main ES Volume 5: Appendix CH-001-001 for the Fradley to Colton area.

#### Mesolithic (10,000BC–4,000BC)

- 3.2.2 There is no further information for this period to that provided in the main ES Volume 5: Appendix CH-001-001 for the Fradley to Colton area.

#### Neolithic (4,000BC–2,200BC)

- 3.2.3 See the main ES Volume 5: Appendix CH-001-001 for more information on this period within the Fradley to Colton area.
- 3.2.4 The Early Neolithic is characterised by the emergence of communal burial in long barrows and of a tradition of monumental communal meeting places that were perhaps also ceremonial centres, in the form of causewayed enclosures. These are ditched enclosures, roughly circular, oval or ovoid in plan, with the ditch or ditches dug in discontinuous lengths with undug sections between. Although there are no known long barrows in or around the study area, there is cropmark evidence of a triple-ditched causewayed enclosure at Mavesyn Ridware (Asset Reference Number FRC306) to the north of the River Trent, set close to a series of prehistoric earthwork monuments.
- 3.2.5 The Late Neolithic (approximately 2,900BC–2,100BC) is particularly associated with henge, stone and timber circles and oval barrows, which were often combined to form ceremonial landscapes. A possible circular enclosure is evident as a cropmark 2.5km west of Hoar Cross through aerial imagery (Asset Reference Number FRC366).

### 3.3 Late prehistory

#### Bronze Age (2,600BC–700BC)

- 3.3.1 There is no further information for this period to that provided in the main ES Volume 5: Appendix CH-001-001 for the Fradley to Colton area.

#### Iron Age (800BC–AD43)

- 3.3.2 There is no further information for this period to that provided in the main ES Volume 5: Appendix CH-001-001 for the Fradley to Colton area.

### 3.4 Romano-British (AD43–AD410)

- 3.4.1 See the main ES Volume 5: Appendix CH-001-001 for more information on this period within the Fradley to Colton area.
- 3.4.2 Within the study areas, there are no examples of clearly Romanised buildings (such as villas) visible in the cropmarks within the Trent Valley, and none have been identified by any other survey type.

### 3.5 Early medieval (AD410–AD1066)

- 3.5.1 See the main ES Volume 5: Appendix CH-001-001 for more information on this period within the Fradley to Colton area.

### 3.6 Medieval (AD1066–AD1540)

- 3.6.1 See the main ES Volume 5: Appendix CH-001-001 for more information on this period within the Fradley to Colton area.
- 3.6.2 Staffordshire was an underdeveloped county at the start of the medieval period. It has been calculated, using the area of woodland recorded for each manor in the Domesday Book, that approximately 32% of the land area of Staffordshire was under woodland in 1086<sup>6</sup>. At the start of the medieval period the Parkgate area was mostly covered with woodland.
- 3.6.3 The Staffordshire landscape in general, and the study area in particular, was a woodland landscape in the medieval and post-medieval period<sup>7</sup>. Unlike traditional lowland parishes of the Midlands, woodland landscapes frequently contained dispersed settlements, reflecting a gradual process of clearance and colonisation.
- 3.6.4 Landscape evidence suggests that open field agriculture was practiced in woodland landscapes, with a two or three-field communal system practiced throughout Staffordshire<sup>8</sup>. Separate systems may have operated in parishes that contained multiple settlements and it is likely that open field agricultural systems operated beside enclosed fields that were farmed individually.
- 3.6.5 Woodland landscapes typically contained reserves of pasture and woodland that could be brought into agricultural use as the population expanded and they contained a much higher incidence of moats. Moats are thought to have been dug by manorial lords and prosperous freeholders as status displays (though they also provided security and functioned as fish ponds) principally from the 12<sup>th</sup> to the mid-14<sup>th</sup> century. Examples of moats nearby can be found at Pipe Ridware (Asset Reference Number FRC076 and FRC088), and Newborough Hall (Asset Reference Number FRC373).
- 3.6.6 Woodland landscapes also had a higher incidence of deer parks and rural industry; there were two deer parks and a glass production site at Colton<sup>9</sup>. There were at least two deer parks in Abbots Bromley. Bromley Park, which lies in the north-eastern part

<sup>6</sup> Rackham, O. (1996), *Trees and Woodland in the British Landscape*, London: Phoenix Giant, pp. 50-53

<sup>7</sup> Rackham, O. (1986), *The History of the Countryside*, London: Dent, pp. 4-5 and Dyer, C. (2000), *Woodlands and Wood-Pasture in Western England*, Oxford: Oxford Press, pp. 97-99

<sup>8</sup> Roberts, B.K. and Wrathmell, S. (2000), *An Atlas of Rural Settlement in England*, London: English Heritage, pp. 55-56, notes on the tract of land between the Ridwares and the Haywoods, supplied by Chris Welch, *Inspector of Ancient Monuments*, Historic England, 10/02/2017

<sup>9</sup> Welch, C. (pers comm) (2017)

of the parish, was owned by the Abbots of Burton-on-Trent and may have dated back into the early 12<sup>th</sup> century, making it one of the earliest parks in Staffordshire. There are also documentary references to Bentilee Park, which would presumably have extended along the eastern boundary of the parish around Bentilee Farm.

- 3.6.7 Glass making was an important medieval industry in Abbots Bromley, with production sites known to have existed in the area of Bagot's Park, to the north-east of the village, and, presumably, Glass Lane, to the east. It is first documented in the mid-13<sup>th</sup> century, using the rich resources of charcoal from the surrounding woodland as fuel. The industry is believed to have developed in the mid-13<sup>th</sup> century and lasted until the 16<sup>th</sup> century. The only known archaeological evidence for glass production in the parish have been found at Bagot's Park, although it seems very probable that similar remains are to be found in the vicinity of Glass Lane.
- 3.6.8 Many of the manors that already existed in 1086 were small; Abbots Bromley had arable land for only one plough in 1086, while many settlements in and around the study area, that would come to flourish later in the medieval period, are not recorded in Domesday. This includes Blithbury, first referenced in surviving documents in the first half of the 12<sup>th</sup> century, and Hill Ridware (first recorded in 1346)<sup>10</sup>.
- 3.6.9 The medieval period divides naturally into two halves. From the 11<sup>th</sup> until the mid-14<sup>th</sup> century, the population of the country doubled, existing settlements expanded and new ones were formed. Much woodland and wasteland was brought into agricultural production. From 1348 to 1520, repeated outbreaks of plague reduced the population of England by a third, precipitating social and economic change, which in turn caused economically and socially weaker settlements to shrink and some to become deserted.
- 3.6.10 The principal settlement in medieval times in the area was Abbots Bromley. 'Bromley' comes from the Old English words brom (broom) and leah (a meadow, or uncultivated field). It appears to have been founded by the deforestation of some land in a densely wooded area<sup>11</sup>.
- 3.6.11 Bromley is mentioned in three pre-conquest charters for Staffordshire<sup>12</sup>. King Edmund's charter of 942 granted lands (including Abbots Bromley) to Wulfsige the Black. In 966, the charter of King Aethelred granted lands to Wulfric and gave details of the boundaries of the estate, which are recognisable as the present day parish boundary (Asset Reference Number FRC336) at Pur Brook, River Blithe and Tad Brook. The settlement became Abbots Bromley (HER02331) in c.1004, when it was passed as part of Wulfric's will to the Benedictine Abbey at Burton upon Trent. The Domesday Book (c.1086) recorded Bromley ('Brumlege') as holding a plough, a priest and some woodland<sup>13</sup>.
- 3.6.12 Bromley, an ecclesiastical holding, was not under the control of the local Manor (the Bagot family of Bagot Park). Villagers were the villeins of the Abbey at Burton upon Trent.

<sup>10</sup> Horovitz, D. (2005), *The Place-Names of Staffordshire*, Brewood: David Horovitz

<sup>11</sup> East Staffordshire Borough Council (2015), *Abbots Bromley, Conservation Area Appraisal*

<sup>12</sup> Ray Shipman (1996), *History of Abbots Bromley*

<sup>13</sup> Laddell, A.R. (1965), *Abbots Bromley*, Shrewsbury: Wilding and Son Ltd

- 3.6.13 In the 13<sup>th</sup> century a royal charter declared the village a free borough; a market was established in 1222, later confirmed by King Henry III on 12 May 1227. The market was held under the Butter Cross, which stands on the village green and thought to date to the 14<sup>th</sup> century. Abbot Nicholas, who legitimised the village market in the 13<sup>th</sup> century, oversaw a programme of deforestation where waste common land was reclaimed and enclosed into private pasture and arable fields<sup>14</sup>. Much of the area of Parkgate passes through the Parish of Abbots Bromley and was likely to have been impacted by Abbot Nicholas' enclosure programme, as is suggested by the surviving field boundary patterns. A mill is thought to have been built at Abbots Bromley sometime in the 12<sup>th</sup> century at Mill Green to the south of the village, likely established to aid the kitchen of the abbey<sup>15</sup>.
- 3.6.14 Every year on Wakes Monday, a traditional dance takes place at Abbots Bromley, called the Horn Dance. First recorded in Robert Plot's *Natural History of Staffordshire* (1686), the dance could have Saxon origins. It has been postulated that the dance was a pagan ritual performed by a royal forester in the hope there would be good hunting for the Mercia Kings (who owned extensive hunting lands surrounding Abbots Bromley). The rituals may have gradually come to be seen as affirming the local hunting rights. The title 'Forester of Bentylee' (the wooded area of Abbots Bromley parish) appeared in the 16<sup>th</sup> century held by the Bentley family before passing to the Fowell family in 1914 (who perform the dance to this day). Bentilee Park Farm occurs within the Parkgate area (Asset Reference Number FRC332, FRC334 and FRC348).
- 3.6.15 The horns used in the Horn dance are made up of six sets of reindeer antlers (three white and three black). An alternative set of horns are used for dances outside the parish boundaries<sup>16</sup>. In 1976 a set of horns was radiocarbon dated to the 11<sup>th</sup> century, which may support the claims of Saxon origins.
- 3.6.16 Wakes Monday celebrations commence in St Nicholas Church, where the horns reside. Dancing begins on the village green, then passes out of the village to Blithfield Hall (the Manor House) and other areas, staying strictly within the parish boundary. There are 12 dancers in total, six with horns accompanied by a musician, Maid Marian (a man in a dress), hobby-horse, Fool, a youngster with a bow and arrow, and another with a triangle. The dancers return to the village and make their way around the public houses and residential houses before the horns are returned to the church.
- 3.6.17 To the north of Parkgate lies the village of Hoar Cross and the modern estate of Hoar Cross Hall, which has medieval origins. A village is recorded in 1230 as 'Horcros', thought to refer to a boundary cross (the boundary with Abbots Bromley Parish passes close by)<sup>17</sup>. The original Hoar Cross estate appears to have originated as a moated site, and comprised 490 acres and was bought for 18 pence in 1450 and included a moat and a drawbridge. The original Hoar Cross Hall stood for nearly 300 years before being demolished in 1740<sup>18</sup>.
- 3.6.18 A religious house was established on the south bank of the Blithe at Blithbury during the episcopate of Roger de Clinton (1129–1148). This was initially for hermits or monks

<sup>14</sup> Rice, M.A. (1931), *Abbots Bromley*, Shrewsbury: Wilding and Son Ltd, p.13

<sup>15</sup> East Staffordshire Borough Council (2015), *Abbots Bromley, Conservation Area Appraisal*

<sup>16</sup> Shipman, E.R. (2000), *A History of Abbots Bromley*

<sup>17</sup> Hoar Cross Parish Council, *History of Hoar Cross*

<sup>18</sup> <https://www.hoarcross.co.uk/blog/hoar-cross-hall-from-past-to-present>

and afterwards became a nunnery. The founder was Hugh de Ridware of Malveysin who made two grants. He initially gave Blithbury to two monks called Guthmund and Saxe, and the bounds of the property ran from the oak at their gate to 'Holebrocke' and then to the Blithe and to 'Sichbrooke', with a wood and common pasture. The second grant was to Guthmund, Saxe, and the nuns of Blithbury which gave Blithbury to hold in free alms 'for the service of God and St. Giles'. The bounds were now from 'Holebrock' to 'Sikebrock' and then to 'Blaklake' and the Blithe. The grant included the right to timber for the repair of the house. There is evidence that soon after its foundation Blithbury was closely associated with the nuns at Brewood, and that it was eventually absorbed by them in the 14<sup>th</sup> century. The only prioress recorded at Blithbury is Alice, who was in office about 1275. The original buildings became part of a farm, and were demolished in the 18<sup>th</sup> century<sup>19</sup>.

### 3.7 Post-medieval (AD1540–AD1901)

- 3.7.1 See the main ES Volume 5: Appendix CH-001-001 for more information on this period within the Fradley to Colton area.
- 3.7.2 During the post-medieval period, the Staffordshire landscape became increasingly enclosed. Some of the land cleared of trees and taken into cultivation between the 11<sup>th</sup> and 14<sup>th</sup> centuries is likely to have been enclosed from the beginning, but during the medieval period most of the agricultural land in any given parish was divided into two or three communally farmed open fields, each farmer holding strips of land scattered more or less evenly across the fields. The open fields of Staffordshire were primarily enclosed piecemeal, through consolidation of holdings achieved through exchange and purchase. Field systems derived from piecemeal enclosure predominate throughout the study area to the north of the River Trent. The chronology of the process of piecemeal enclosure is not known in detail, because the transactions to achieve it were not usually recorded. Nevertheless, as land holdings were consolidated and the open fields were enclosed, farms that were hitherto located primarily in villages and hamlets migrated outwards to sit amidst their now consolidated holdings. The date of the dispersed farmsteads may therefore cast light on the chronology of piecemeal enclosure within the study area.
- 3.7.3 The post-medieval period was a time of agricultural improvement. Throughout the study area north of the River Trent and particularly around Colton, the remains of marl pits survive as ponds or shallow depressions. Marling involved digging pits through the relatively acidic topsoil down to alkaline subsoil, which was extracted and spread upon arable fields to reduce acidity and increase fertility. Marling had a long history, but was perhaps practiced most during the 18<sup>th</sup> century<sup>20</sup>.
- 3.7.4 The dissolution of the monasteries saw Abbots Bromley, as part of the estate of Burton Abbey, passed into the private ownership of Sir William Paget in 1547. It subsequently became part of the newly created Manor of Pagets Bromley.
- 3.7.5 In 1583, following the death of Sir Thomas Paget the younger (exiled due to his involvement with plots surrounding Mary, Queen of Scots), the estate was confiscated

<sup>19</sup> Baugh, G. C., Cowie, W. L., Dickinson, J. C., Duggan, A. P., Evans, A. K. B., Evans, R. H., Hannam, C., Heath, P., Johnston, D. A., Hilda J., Ann J. K., Kirby J. L., Mansfield, R. and Saltman, A. (1970), *Houses of Benedictine nuns: The priory of Blithbury*, in *A History of the County of Stafford: Volume 3*, Greenslade, M. W. and Pugh, R. B., London p. 220

<sup>20</sup> Williamson, T. (2002), *The Transformation of Rural England: Farming and the Landscape 1700 – 1870*, Exeter: University of Exeter Press, p.67

by the crown. However, Sir Thomas' son William, a devout protestant convert, had proved his loyalty and was restored the estate. The Manor endured under the Paget who, during the 19<sup>th</sup> and 20<sup>th</sup> centuries, gradually sold their estates allowing the village to become Abbots Bromley once again.

- 3.7.6 During the post-medieval period, development of local industry took place centred on Abbots Bromley. As the area was high in iron mineral deposits and had a ready source of fuel (wood), an iron smelting industry grew up at Abbots Bromley. A foundry at Forge Farm had a bellows powered by a waterwheel at Mires Brook. However, by the 16<sup>th</sup> century the industry began to fade. Charcoal was banned as a fuel as the loss of woodland was causing concern, and the depletion of ore deposits saw the industry cease locally.
- 3.7.7 There is documentation of continuing glass manufacture in the 16<sup>th</sup> century at Abbots Bromley, when Richard Bagot established glass furnaces in Bagots Wood<sup>21</sup>. Evidence for the industry survives in the form of local place-names (such as Glass Lane and at Bromley Hurst (Asset Reference Number FRC328))<sup>22</sup>. It appears the industry suffered the same fate as iron smelting with the prohibition of the use of charcoal. Abbots Bromley also had a sizeable brewing industry up until the late 19<sup>th</sup> century, when licensing laws hastened the decline. Other trades undertaken included tanning, shoemaking and brick manufacture (from the late 17<sup>th</sup> century onwards).
- 3.7.8 Hoar Cross had been the first seat of the Ingram family from the early 17<sup>th</sup> century. In 1661 Henry Ingram was brought up as Baron Ingram and Viscount of Irvine (the line became extinct on the death of the 9th Viscount in 1778). In 1740 the 'Old Hall', was demolished. The new structure (Asset Reference Number FRC341) was itself remodelled between 1862 and 1871 to the red-brick gothic mansion that survives today<sup>23</sup>.

### 3.8 Modern (AD1901–present)

- 3.8.1 See the main ES Volume 5: Appendix CH-001-001 for more information on this period within the Fradley to Colton area.

---

<sup>21</sup> Bagot MSS at Blithfield; *Quarter Sessions Rolls 1590 & 1610*, Tithe Book of 1799 listed glaziers in the village

<sup>22</sup> HS2 Ltd (2019), *High Speed Two (HS2) Phase 2a (West Midlands - Crewe), Background Information and Data to accompany Supplementary Environmental Statement 2 (SES2) and Additional Provision 2 Environmental Statement (AP2 ES), Volume 5: Appendix CH-004-000*, <https://www.gov.uk/government/organisations/high-speed-two-limited>

<sup>23</sup> Miln, P. (1971) *Hoar Cross Hall*

## 4 Built heritage

### 4.1 Introduction

- 4.1.1 This section provides baseline information relating to all built heritage assets within or surrounding the Parkgate grid supply point connection amendment where adverse effects of moderate or major significance are predicted.
- 4.1.2 Further information on all these assets, plus any designated assets that lie between 500m and 2km of the land required for the Parkgate grid supply point connection amendment and within the ZTV, but are not described below, can be found in the SES2 and AP2 ES Volume 5: Appendix CH-002-000 and Appendix CH-003-000.

### 4.2 Built heritage assets within the land required for the Parkgate grid supply point connection amendment

#### Hoar Cross Conservation Area (Asset Reference Number FRC342)

- 4.2.1 The asset is centred upon Hoar Cross Hall, rebuilt by the renowned Victorian architect Henry Clutton for the Meynell Ingram family in the late 19<sup>th</sup> century, a two-storey mansion built in the Jacobean style. It is of red brick construction with a slate roof. It has symmetrical north and south elevations, transomed and mullioned windows, decorative brick chimneystacks and cupolas. The hall is listed at Grade II. Also within the conservation area are the upper and lower walled formal gardens, located to the immediate south of the hall and originally designed in accordance with Francis Bacon's "Essay on Gardens" of 1625. The gate piers separating the upper and lower walled gardens were brought from Temple Newsam, Yorkshire, and are listed at Grade II. The informal parkland to the south of the walled gardens is also included in the conservation area. Lawnpit Covert borders it along its south-western side, with Bishop's Planting to its south-east and Church Planting along its eastern side. The Grade I listed Church of the Holy Angels, which is contemporary with the house, lies in thick plantation to the east of the formal gardens. Also within the conservation area is the hamlet of Hoar Cross, an estate village comprising red brick buildings with clay tile roofs, decorative timber framing elements, window hood mouldings in stone, and picket fencing. The asset derives its significance from the historical and architectural values of the house, its ornamental landscape, and its estate village, which illustrate the eclectic nature of house and garden design favoured by Victorian entrepreneurs in Staffordshire<sup>24</sup>, and their belief that all elements of their estates (estate villages included) were suitable for embellishment and display. The asset also has evidential value, in respect of the remains of Hoar Cross Old Hall and its surroundings, which are located at the western edge of the conservation area. The relationships between the various elements of the asset also add to its value, by allowing an understanding of how it functioned as an integrated estate. The view south from the hall toward the spires of Lichfield Cathedral also makes a specific contribution to the value of the asset. The designed fall in the level of the pleasure gardens that lie to the immediate south of the hall, the axial walkway through them and its terminal gate piers, the ha-ha between the pleasure gardens and the park and the converging blocks of

<sup>24</sup> Mowl, T. and Barre, D. (2009), *The Historic Gardens of England, Staffordshire*, Bristol: Redcliffe, pp. 257-259



parkland perimeter planting were all designed to frame a vista of the spires of Lichfield Cathedral, centred upon the south front of the hall<sup>25</sup>.

### **Bromley Park Deer Park, Abbots Bromley (Asset Reference Number FRC369), non-designated**

- 4.2.2 There is documentary evidence for a deer park at Abbots Bromley in the 16<sup>th</sup> century. It is said to have been dispersed by the Civil War, but Saxton depicts a park in the general vicinity of this asset on his map of 1577. An agricultural fieldscape is labelled 'Bromley Great Park' at this location on the 1842 tithe map, and 'Bromley Park' on the 1882 Ordnance Survey map, which also names 'Parkgate' farm. The likely outline of the former deer park is traceable as a continuous line of field and/or roadside boundaries. In places, these boundaries overlie a slight bank and outer ditch, which are probably the remnants of the original bank that would have been topped by a pale. The asset derives its significance from its evidential and historical value; its setting makes a minimal contribution to its significance.

## **4.3 Designated built heritage assets within 2km of the land required for the Parkgate grid supply point connection amendment**

### **Abbots Bromley Conservation Area (Asset Reference Number FRC360)**

- 4.3.1 The special interest of the asset lies predominantly in the vernacular construction of the tightly clustered buildings that line either side of the sinuous and axial Bagot Street/High Street. These are predominantly two storey buildings in locally manufactured dull orange brick with tiled roofs. They include 51 listed buildings and one scheduled monument. The long property boundaries and drives that run back from this axial road have medieval origins and make a major contribution to the character of the asset. The rural setting of the asset also contributes to its significance by furthering an understanding that the prosperity of Abbots Bromley and its particular character was derived from its function as a market town serving a farming district.

### **Church of Holy Angels, Hoar Cross, listed Grade I (Asset Reference Number FRC338)**

- 4.3.2 Church built by G.F. Bodley between 1872 and 1878 in an 'exceedingly refined'<sup>26</sup> late medieval Decorated Gothic style. It was commissioned by the wife of Hugo Francis Meynell Ingram, who rebuilt Hoar Cross Hall and had died the year before. The asset primarily derives its significance from its architectural and historical value as a good example of a building of its date and type and from the interrelationship of the buildings around it. The seamless integration of the wall enclosing the churchyard with the perimeter wall of Hoar Cross Hall, in addition to the arched gateway between the two and the eccentric orientation of the church, allow an understanding that the asset is an estate church.

<sup>25</sup> East Staffordshire Borough Council Development Services (1997), *Hoar Cross Conservation Area*

<sup>26</sup> Pevsner, N. (1974), *The Buildings of England, Staffordshire, Harmondsworth*, Penguin, p. 148

### **Pair of gate piers and gates, Hoar Cross Hall (Asset Reference Number FRC337), listed Grade II**

- 4.3.3 Pair of 17<sup>th</sup> century decorative ashlar gate piers and fine wrought iron gates in the south wall of the Terrace Garden, on the central north-south axis of the hall and garden, at the interface of the pleasure gardens and the parkland beyond. The asset derives its significance from its architectural and historical values as a good example of a building of its date and type, from its relationship with the hall, the other elements of the terrace garden and the more informal parkland beyond, and for the role it plays in framing the view from the hall, south along the central axis of the Terrace Garden, across the parkland to the spires of Lichfield Cathedral beyond.

### **Pair of gate piers and seats, Hoar Cross Hall (Asset Reference Number FRC339), listed Grade II**

- 4.3.4 Two large 17<sup>th</sup> century square piers with moulded entablature and topped by four ball finials and a central pyramid finial. To the south face are attached seats with scroll arms. Moved to their present location on the south terrace of Hoar Cross Hall in 1870. As with the asset above, this asset derives its significance from its architectural and historical values as a good example of a building of its date and type from its relationship with the hall, the other elements of the terrace garden and the more informal parkland beyond, and for the role it plays in framing the view from the hall, south along the central axis of the Terrace Garden, across the parkland to the spires of Lichfield Cathedral beyond.

### **Cedar House and Streethay House Farmhouse (Asset Reference Number FRC238), listed Grade II**

- 4.3.5 The asset comprises a pair of mid to late 18<sup>th</sup> century brick farmhouses. It primarily derives its significance from its historical values as a good example of a building of its date and type and as fairly well preserved examples of 18<sup>th</sup> century farmhouses. Their settings were subject to substantial change in the 20<sup>th</sup> century. Nevertheless, the relationship of these farmhouses to their farm buildings and yards may facilitate an understanding of how they functioned as farmsteads and so an understanding of regional farming practices and rural building styles in the pre-modern period.

### **Mount Pleasant Farmhouse (Asset Reference Number FRC316), listed Grade II**

- 4.3.6 Mount Pleasant Farm House dates to the 18<sup>th</sup> century with a later 19<sup>th</sup> century gable and is located on Orange Lane, Abbots Bromley. The farmhouse's immediate setting is the farmyard with the wider setting incorporated through agricultural fields and rolling hills and woodland. The asset primarily derives its significance from its historical value as a good example of a farmhouse of its period. The equally well preserved, broadly contemporary historical farm buildings and, to a certain extent, its less well preserved surrounding fieldscape also contribute to its significance. It allows an understanding of how the asset functioned as an integral part of an historic farmstead at the centre of a farming estate.

### **Gilleon's Hall (Asset Reference Number FRC322), listed Grade II**

- 4.3.7 The asset is a 17<sup>th</sup> century timber-framed red brick farmhouse with later alterations. It has three bays, two-storeys and a slightly lower gable-lit extension. It is located on the west side of Orange Lane. The asset primarily derives its significance from its historical value as a good example of a farmhouse of its period. The fairly well preserved, historical, brick built farm buildings, which form a row plan, and, to a certain extent, the paddocks in front of the farmstead, also contribute to the asset's significance, by allowing an understanding of how the asset functioned as an integral part of an historic farmstead at the centre of a farming estate. The 20<sup>th</sup> century, steel framed farm buildings that lie to the north-west of the historic farmstead add no value to the asset.

### **Wall incorporating bee boles and fowl pens (Asset Reference Number FRC324), listed Grade II.**

- 4.3.8 The asset comprises a red brick curving wall with bee boles, probably dating to the mid-19<sup>th</sup> century. The wall sweeps round from the east corner of Gilleon's Hall to flank the south-west side of the drive to the farmyard and incorporates four segmental headed fowl pens to the north, and bee boles to the south. The asset primarily derives its significance from its historical value as a good example of its type and date, and from its interrelationship with Gilleon's Hall and its historic farm buildings, which allows the asset's historical context to be understood.

### **Bentilee Park Farmhouse, Glass Lane (Asset Reference Number FRC332), listed Grade II**

- 4.3.9 The asset comprises an early 18<sup>th</sup> century farmhouse with later alterations and additions, located on the east side of Glass Lane. Its immediate setting includes its associated farm buildings and yards, and its wider setting comprises the fields and strips of woodland that constitute its land holding. The asset primarily derives its significance from its historical value as a good example of a farmhouse of its period. Its associated historic farm buildings and fields also contribute to its value by furthering an understanding of how the farmhouse functioned at the centre of its historic farmstead and farmland. Some of the fields to the south-west of the farmstead would appear to preserve the characteristic sinuous 'aratural curve' of enclosures from the medieval open fields before the era of parliamentary enclosure. This suggests that at least part of its associated fieldscape may be contemporary with the original building of the farmhouse and the initial formation of its farm holding.

### **Stables and Former Cartsheds, Bentilee Park Farm (Asset Reference Number FRC333), listed Grade II**

- 4.3.10 The asset comprises mid-19<sup>th</sup> century red brick stables with plain tile roofs, and former cart sheds on the east side of Glass Lane, Abbots Bromley, located approximately 30 metres east of Bentilee Park Farmhouse. The ranges enclose three sides of the farmyard. The asset primarily derives its significance from its historical value as a good example of farm buildings of their period. Their relative positions around their associated farmyard and their relationships with the farmhouse and their surrounding fields allows an understanding of how they would have functioned as part of a historic farmstead during the 19<sup>th</sup> century.

### **Milepost at NGR SK 0865 228g (Asset Reference Number FRC335), listed Grade II**

- 4.3.11 The asset comprises a mid-19<sup>th</sup> century milepost located on Lichfield Road, Abbots Bromley. It is made of cast iron, is hollow (but currently filled with concrete) and triangular in shape with a sloping top. It is currently painted white with raised lettering in black and a black painted base. It gives directions to Abbots Bromley, Uttoxeter, Handsacre and Lichfield. The milepost derives its significance from its historical value as a good example of an in situ milepost lining one of Staffordshire's former turnpike roads. Such mileposts were once comparatively common, but well preserved in situ examples (such as this one) are becoming increasingly rare.

### **Hoar Cross Hall (Asset Reference Number FRC341), listed Grade II**

- 4.3.12 Located off Maker Lane, Yoxall, Hoar Cross Hall is a large mansion of brick in the Jacobean style, built by the architect Henry Clutton between 1862 and 1871. The asset is located within an ornamental landscape that comprises formal walled gardens and informal parkland beyond, the laying out of which was contemporary with the construction of the hall. The ornamental landscape was designed not only to provide a suitably elegant setting for the hall, but also to frame a view to the distant spires of Lichfield Cathedral. Consequently, the value of the asset derives not only from the architectural and historical values of the hall, but also those of its ornamental landscape setting.

### **Town End Farmhouse (Asset Reference Number FRC351), listed Grade II**

- 4.3.13 The asset comprises an early to mid-19<sup>th</sup> century red brick farmhouse located on Lichfield Road, Abbots Bromley. The asset primarily derives its significance from its historical value as a good example of a farmhouse of its period of construction. Its compact farmyard and associated historical farm buildings, now repurposed and converted to domestic use, survive largely as depicted on historical mapping to the south of the asset, while a garden plot survives to its north. These contribute to the significance of the asset by allowing an understanding of how it functions as part of a farmstead and to visualise the farmstead's original appearance.

### **Grange Farmhouse (Asset Reference Number FRC352), listed Grade II**

- 4.3.14 The asset is an 18<sup>th</sup> century two-storey red brick farmhouse with a 20<sup>th</sup> century conservatory. It is located on the south side of Ashbrook Lane, Abbots Bromley. The asset primarily derives its significance from its historical value as a good example of an 18<sup>th</sup> century farmstead. One of its historic farm buildings may survive and this gives some understanding of how the farmstead functioned as part of an historic farmstead, as does the surrounding fieldscape, which retains much of its late 19<sup>th</sup> century character.

### **Milepost at NGR SK 0998 2420 (Asset Reference Number FRC353), listed Grade II**

- 4.3.15 The asset comprises a mid to late 19<sup>th</sup> century milepost located on the south-east side of the road B5234, Abbots Bromley. It is made of cast iron, is hollow and triangular in shape with a sloping top. Raised lettering give directions to Abbots Bromley,

Newborough and Burton. The setting of the asset is defined by its location and relationship with the B5234 road. The milepost derives its significance from its historical value as a good example of an in situ milepost lining one of Staffordshire's historic roads. Such mileposts were once comparatively common, but well preserved in situ examples (such as this one) are becoming increasingly rare.

### **Milepost at NGR SK 0838 2435 (Asset Reference Number FRC355), listed Grade II**

- 4.3.16 The asset is a mid to late 19<sup>th</sup> century milepost located on the south-east side of the road B5234, Abbots Bromley. It is made of cast iron, is hollow (but filled with concrete) and triangular in shape with a sloping top. Raised lettering give directions to Burton, Uttoxeter, Litchfield, Handsacre and Newborough. The setting of the asset is defined by its location and relationship with the B5234 road. The milepost derives its significance from its historical value as a good example of an in-situ milepost lining one of Staffordshire's historic roads. Such mileposts were once comparatively common, but well preserved in situ examples (such as this one) are becoming increasingly rare.

### **Bank House (Asset Reference Number FRC356), listed Grade II**

- 4.3.17 The asset is a red brick house dating to about 1800 located on the west side of Lichfield Road, Abbots Bromley. It retains the majority of its original features with a clay tile roof and gable-lit attic. Its immediate setting is town-based surrounded by similar buildings, with a wider setting comprising of agricultural fields. The asset derives its significance primarily from its historical value as a good example of a house dating to the early 19<sup>th</sup> century built in the contemporary local vernacular style of Abbots Bromley and using locally made building materials. It also derives part of its significance from the other buildings within its setting that also line Lichfield Road. To the north and west of the asset, these are predominantly of early or mid-18<sup>th</sup> century date, while opposite and to the immediate south of the asset they are of early 19<sup>th</sup> century date. This indicates and allows an understanding that the asset was part of a ribbon development of early 19<sup>th</sup> century date that butted against an earlier one of the previous century.

### **The Coach and Horses (Asset Reference Number FRC357), listed Grade II**

- 4.3.18 The asset comprises an early 18<sup>th</sup> century coaching inn building with pebble dashed walls and a plain tile roof, with casements and false shutters. It is located on the High Street in Abbots Bromley. The asset derives its significance primarily from its historical value as a good example of an early 18<sup>th</sup> century coaching inn. Its setting also contributes to its significance, however. The other buildings that line Lichfield Road to the immediate west of the asset are of 18<sup>th</sup> century date (with later infill and replacement), while those to the south of the asset are of 19<sup>th</sup> century date. This suggests that the asset was at the edge of the built up area of Abbots Bromley during the early 18<sup>th</sup> century but came to be incorporated within the town a century later. Its setting therefore allows an understanding of the historical development of the asset in relation to the town.

### **Dandelion Cottages, Garden Wall, Gates and Railings, School of St Mary and St Anne (Asset Reference Number FRC358), listed Grade II**

- 4.3.19 This asset is located on the north side of the high street in Abbots Bromley and consists of Dandelion Cottages, garden walls, gates and railings, and the School of St Mary and St Anne (formerly listed as Dandelion Cottages). The row of houses, (which are now used as offices), date from the early to mid-18<sup>th</sup> to the mid-19<sup>th</sup> century. They are of red brick construction with clay tile roofs and integral gable end stacks. They are currently arranged in two parts, with a pair of 18<sup>th</sup> century houses to the right and a pair of 19<sup>th</sup> century houses to the left. The 19<sup>th</sup> century houses comprise of two storeys and a small garden in front of each house. The asset derives its significance principally from its historical value as a group of buildings of early 18<sup>th</sup> to mid-19<sup>th</sup> century date, each of which is a good example of its type and date. Other buildings within the setting of the asset also contribute to the value of the asset by facilitating the understanding that the asset sits astride the limit of 18<sup>th</sup> century ribbon development, its hiatus and subsequent recommencement in the early 19<sup>th</sup> century.

### **Coleridge Farmhouse, School of St Mary and St Anne (Asset Reference Number FRC359), listed Grade II**

- 4.3.20 The asset comprises an early 17<sup>th</sup> century timber-framed house, which was extended and partly rebuilt in red brick in the 18<sup>th</sup> century and later centuries. The asset derives its significance in part from its historical value, as a good example of a multi-phase house of post-medieval date. Other built heritage assets within its setting facilitate an understanding that the asset was part of a ribbon development of 17<sup>th</sup> century date.

### **Moat Hall Farmhouse (Asset Reference Number FRC362), listed Grade II**

- 4.3.21 Moat Hall Farm House is an 18<sup>th</sup> century farmhouse set on an earlier site, with plain tile roof and brick integral end stacks. It has a 20<sup>th</sup> century gabled porch and stands within a moat, located on the south side of Moat Lane, Newborough. The asset derives its significance in part from its historical value as a good example of an 18<sup>th</sup> century farmhouse. Its well preserved historic red brick farm buildings, which define a loose courtyard plan and which comprise part of the asset's immediate setting, also contribute to its significance by facilitating an understanding of how the asset functioned as part of a post-medieval farmstead. The asset is also likely to have evidential value due to the potential for the survival of archaeological deposits beneath and immediately adjacent to the asset which lies within a moated site that is likely to date between approximately 1100 and 1350. Any surviving archaeological deposits are likely to further an understanding of the historical development of the site and the farmsteads that will have preceded the asset. The surrounding landscape of the asset, which comprises its wider setting, also contributes to the significance of the asset by furthering an understanding of its historical development. The asset would appear to be located at the northern end of a discrete block of land that is defined by the River Swarbourn along its western side, its tributary the Mare Brook to the east, and Moat Lane to the north. In following natural boundaries along much of its circuit, this block of land is likely to be of some antiquity and may owe its origins, as may the initial farmhouse within the moat, to land reclamation (assarting) undertaken between the 12<sup>th</sup> and early 14<sup>th</sup> century.

### **Milepost at NGR SK 1148 2460 (Asset Reference Number FRC363), listed Grade II**

- 4.3.22 The asset is a mid to late 19<sup>th</sup> century milepost located on the south side of the B5234 road. It is made of cast iron, is hollow and triangular in shape with a sloping top. It gives directions to Abbots Bromley, Newborough and Burton. The milepost derives its significance from its historical value as a good example of an in-situ milepost lining one of Staffordshire's historic roads. Such mileposts were once comparatively common, but well preserved in situ examples (such as this one) are becoming increasingly rare.

### **The Old Thatch (Asset Reference Number FRC367), listed Grade II**

- 4.3.23 The Old Thatch is a 17<sup>th</sup> century timber-framed cottage with thatched roof and plastered integral end stacks located within Newborough on the south-east side of the town. It was extended in the 20<sup>th</sup> century and is surrounded by small garden with agricultural fields and hills in the wider setting. The asset primarily derives its significance from its historical value as a good example of a building of its type and period of construction. The plot of land within which it is located and the fieldscape and village buildings beyond, which constitute the asset's immediate and wider setting, also contribute to its significance, by furthering an understanding that the asset will have been, in origin, the centre of a small holding occupied by a labourer who would have supplied agricultural services to the more substantial farmers in the village.

### **Milepost at NGR SK 1431 2517 (Asset Reference Number FRC368), listed Grade II**

- 4.3.24 The asset is a mid to late 19<sup>th</sup> century milepost located on the south side of the B5234 road. It is made of cast iron, is hollow and triangular in shape with a sloping top. It gives directions to Newborough, Abbots Bromley and Burton. The milepost derives its significance from its historical value as a good example of an in situ milepost lining one of Staffordshire's historic roads. Such mileposts were once comparatively common, but well preserved in situ examples (such as this one) are becoming increasingly rare.

### **Church of All Saints (Asset Reference Number FRC370), listed Grade II**

- 4.3.25 The asset is the parish church of Newborough, built by J. Oldrid Scott between 1899 and 1901 on the site of an earlier (medieval) building. It is of coursed and squared stone construction with ashlar dressings, coped verges on shaped kneelers and a plain tile roof. The asset primarily derives its significance from its architectural and historical value as a good example of a church of its type and period of construction. The ground beneath and adjacent to the asset is also likely to be of evidential value, as it is likely to have potential to further an understanding of the form and date of previous churches that will have existed on the site, and of the community it served, through the remains of its members buried beneath the church and in its churchyard. The churchyard and village centre setting of the asset also allow an understanding that this is a parish church at the centre of its community of users.

### **Milepost at NGR SK 1280 2544 (Asset Reference Number FRC371), listed Grade II**

- 4.3.26 The asset comprises a mid to late 19<sup>th</sup> century milepost located on the south side of road B5234. It is made of cast iron, is hollow and triangular in shape with a sloping top. The top face reads 'Newborough', and gives directions to Abbots Bromley, Newborough, and Burton. The setting of the asset is defined by its location and relationship with the road. The milepost derives its significance from its historical value as a good example of an in situ milepost lining one of Staffordshire's historic roads. Such mileposts were once comparatively common, but well preserved in situ examples (such as this one) are becoming increasingly rare.

### **Farm outbuilding, Newborough Farm (Asset Reference Number FRC372), listed Grade II**

- 4.3.27 The asset is a 17<sup>th</sup> century timber-framed outbuilding located on Hollybush Road, Newborough, with 18<sup>th</sup>, 19<sup>th</sup> and 20<sup>th</sup> century additions or alterations. Red brick has intermittently replaced much of the lower framework. The asset primarily derives its significance from its historical value as a good example of a building of its type and date. Its setting of piecemeal enclosure, which is likely to have changed little since the 17<sup>th</sup> century, also makes a contribution to the significance of the asset, by contributing to an understanding of how the asset would have functioned at the centre of an agricultural estate.

### **Stables and house approximately 100 yards west of Holly Bush (Asset Reference Number FRC374), listed Grade II**

- 4.3.28 The asset comprises early 19<sup>th</sup> century stables that were remodelled and in part converted to a house in the early 20<sup>th</sup> century. The asset has a hipped slate roof; brick ridge stack and lateral external stack. The asset partly derives its significance from its architectural and historical value as a good example of a building of its type and date. Its setting, which comprises Holly Bush, a compact 19<sup>th</sup> century country house, its coach house and stable block, and the ornamental parkland ('Hollybush Park') within which the ensemble is situated, also makes a major contribution to the asset's significance, by enabling an understanding of the function and the architectural and social context of the asset to be understood.

### **Coach house and stables approximately 30 yards west of Holly Bush (Asset Reference Number FRC375), listed Grade II**

- 4.3.29 This 19<sup>th</sup> century painted brick coach house with hipped slate roof is located adjacent to Holly Bush, a compact 19<sup>th</sup> century country house, and its stable block, within Holly Bush Park, to the north of Newborough. The asset partly derives its significance from its architectural and historical value as a good example of a building of its type and date. Its setting, which comprises Holly Bush, its stable block, and Hollybush Park, within which the ensemble is situated, also makes a major contribution to the asset's significance, by enabling an understanding of the function and the architectural and social context of the asset to be understood.



**Holly Bush (Asset Reference Number FRC376), listed Grade II**

- 4.3.30 Holly Bush is an early 19<sup>th</sup> century small country house located in Hollybush Park. The asset primarily derives its significance from its architectural and historical value as a good example of a building of its type and date. Its ornamental parkland and its associated coach house and stable block also contribute to its significance, by enabling an understanding of the social aspirations of its residents and the act of social competition the ensemble embodies. The asset and its ornamental landscape also contribute to an understanding of country house and country house landscape design at this social level at this date in Staffordshire, and they elucidate the range of elegant and pleasurable experiences the asset and its parkland setting provided.

**Parkside Farmhouse, attached Stable and Cow shed (Asset Reference Number FRC377), listed Grade II**

- 4.3.31 The asset, which is located on the north side of Radmore Road, Abbots Bromley, comprises a timber framed cottage farmhouse, stable and cow house, all originally dating to the 17<sup>th</sup> century and joined together in a row. The asset primarily derives its significance from its historical value as group of buildings each of which is a good example of its type and date. Its adjacent farmyard and fieldscape setting also contribute to the asset's significance, by furthering an understanding that and how the asset functioned as a farmstead at the centre of an agricultural estate.

**Barn and cart shed approximately 10 yards south of Park Lodge (Asset Reference Number FRC378), listed Grade II**

- 4.3.32 The asset comprises an early to mid-19<sup>th</sup> century barn and cart shed. It is of red brick construction with vitrified headers used in a diaper pattern and has a plain tile roof. The asset is located approximately 10 yards south of Park Lodge in Bigots Park, now part of Abbots Bromley. The asset primarily derives its significance from its architectural and historical value as a good example of a building of its type and date. Its farmstead and fieldscape setting has changed substantially since the asset was first built and makes only a limited contribution to the asset's significance, by making a minor contribution to an understanding of how the asset functioned as part of an historic farmstead.

**Park Lodge (Asset Reference Number FRC379), listed Grade II**

- 4.3.33 The asset comprises an early to mid-19<sup>th</sup> century redbrick farmhouse located in Bagots Park. It is Tudor-Gothic in style with a plain tile roof. Park Lodge stands at the entrance to Bagots Park. The asset primarily derives its significance from its architectural and historical value as a good example of a farmstead of its period of construction. Its relationship with its contemporary cart shed and its surrounding fieldscape also makes a contribution to the asset's significance by furthering somewhat an understanding of how the asset functioned at the centre of an historic farmstead within its agricultural holding. However, that contribution is minor, because the farmstead and fieldscape setting of the asset has changed substantially since depicted on late 19<sup>th</sup> century historic mapping.

#### 4.4 Key non-designated built heritage assets within 500m of the land required for the Parkgate grid supply point connection amendment

##### **Mount Pleasant Farmhouse, Orange Lane, Abbots Bromley (Asset Reference Number FRC317), non-designated**

- 4.4.1 The asset comprises a farmhouse possibly dating to the 18<sup>th</sup> century. It is located within Mount Pleasant farm, on Orange Lane and is surrounded by farmyard and agricultural pursuits further afield. The asset primarily derives its significance from its historical value as a fairly good example of a building of its type and date and from the interrelationship of the buildings around it.

##### **Mount Pleasant Farm, Orange Lane, Abbots Bromley (Asset Reference Number FRC319), non-designated**

- 4.4.2 The asset comprises a historical farmstead complex located on Orange Lane. It is surrounded by its farmland. The asset primarily derives its significance from its historical value as a fairly good example of a historic farmstead. Its functional relationship with its surrounding farmland also makes a contribution to its significance.

##### **Barn, The Rookery Farm, Bromley Hurst (Asset Reference Number FRC320), non-designated**

- 4.4.3 The asset is a 19<sup>th</sup> century barn on Rookery Farm, Bromley Hurst. Immediate setting of this asset includes the farmyard of Rookery Farm, surrounded further afield by agricultural pursuits. The asset primarily derives its significance from its historical value as a fairly good example of an historic farm building and from its functional interrelationships with its associated farm buildings.

##### **Gilleon's Hall Farm, Orange Lane, Abbots Bromley (Asset Reference Number FRC325), non-designated**

- 4.4.4 Gilleon's Hall is a 17<sup>th</sup> century farmhouse with later alterations located on the west side of Orange Lane. The building is of red brick with an earlier timber frame, has a plain tile roofs and brick ridge stacks. The asset primarily derives its significance from its historical value as a fairly good example of a farmhouse of 17<sup>th</sup> century date and from its functional relationships with the agricultural buildings around it.

##### **Hurd's Farm, Abbots Bromley (Asset Reference Number FRC331), non-designated**

- 4.4.5 Hurds farm is a 19<sup>th</sup> century farm comprising four post-medieval buildings within a yard. Its setting comprises the land farmed from this asset. The asset primarily derives its significance from its historical value as a fairly good example of a 19<sup>th</sup> century farmstead. Its fieldscape setting also contributes to its significance by facilitating an understanding of how the farmstead function within its farming context.

### **Bentilee Park Farm, Glass Lane, Abbots Bromley (Asset Reference Number FRC334), non-designated**

- 4.4.6 The asset is an 18<sup>th</sup> century farm located on Glass Lane, consisting of Bentilee Park Farmhouse, stables and a former cart shed. The asset primarily derives its significance from its historical value as a fairly good example of an 18<sup>th</sup> century farmstead and from the interrelationship of the buildings around it. Its fieldscape setting also contributes to its significance by facilitating an understanding of how the farmstead function within its farming context.

### **Ashlands Farm, Abbots Bromley (Asset Reference Number FRC347), non-designated**

- 4.4.7 Ashland's Farm is a 19<sup>th</sup> century farm located on Pinfold Road surrounded by modern buildings. It has a loose courtyard plan and is surrounded immediately by agricultural farmland. The asset primarily derives its significance from its historical value as a fairly good example of a 19<sup>th</sup> century farmstead. Its fieldscape setting also contributes to its significance by facilitating an understanding of how the farmstead function within its farming context.

### **Bentilee Farm, Abbots Bromley (Asset Reference Number FRC348), non-designated**

- 4.4.8 Bentilee farm is a 19<sup>th</sup> century farmstead located on Glass Lane, surrounded by woodland and agricultural fields. The asset primarily derives its significance from its historical value as a fairly good example of a 19<sup>th</sup> century farmstead. Its fieldscape setting also contributes to its significance by facilitating an understanding of how the farmstead function within its farming context.

### **Bromley Wood Farm, Abbots Bromley (Asset Reference Number FRC361), non-designated**

- 4.4.9 The asset is a 19<sup>th</sup> century farm located at the southern end of Bromley Park Deer Park, Abbots Bromley and to the right of Netherwood Farm. It has a regular courtyard plan and lies within a setting of agricultural field systems and surrounding woodland. The asset primarily derives its significance from its historical value as a fairly good example of a 19<sup>th</sup> century farmstead. Its fieldscape setting also contributes to its significance by facilitating an understanding of how the farmstead function within its farming context.

## **4.5 Key built heritage assets within 2km of the land required for the Parkgate grid supply point connection amendment**

- 4.5.1 There are no designated heritage assets within the above-defined area upon which the Parkgate grid supply point connection amendment will have a major or moderate adverse significant effect.

## 5 Historic landscape

### 5.1 Introduction

5.1.1 A process of historic landscape assessment has been carried out, identifying historic landscape character areas (HLCA) along the route of the AP2 revised scheme. HLCA are based on historic landscape characterisation undertaken by Staffordshire County Council and Cheshire County Council and through consultation with these authorities and Historic England. HLCA have been defined where the historic landscape has a broadly distinct area of homogeneity. Descriptions of individual HLCA are presented in the main ES Volume 5: Appendix CH-005-000, Historic landscape character report and HLCA 20 as an annex to this report.

5.1.2 HLCA identified within the Fradley to Colton area comprise:

- HLCA1: Fradley to Bromley Heath;
- HLCA2: Kings Bromley, the Trent Valley and the Ridwares;
- HLCA3: The Trent Valley, Rugeley;
- HLCA4: Colton and Hamstall Ridware; and
- HLCA 20: Blythe Valley and Bromley.

### 5.2 Parks and Gardens

5.2.1 A number of country houses and their pleasure gardens and landscape parks were established throughout Staffordshire during this period, perhaps aided by the early enclosure of the Staffordshire landscape.

#### **Hoar Cross Hall Park (Asset Reference Number FRC340)**

5.2.2 The asset comprises an ornamental landscape laid out around the newly built Hoar Cross Hall in the late 19<sup>th</sup> century. It comprised formal gardens to the immediate south and east of the house, which were restored as close to the Victorian originals as possible in the late 20<sup>th</sup> century, with, beyond a ha-ha, a landscape park. This was defined by blocks of new perimeter planting, namely Lawnpit Covert, Bishops Planting and Church Planting. Hedgerow trees were retained within the body of the park when the internal hedgerows of a hitherto agricultural landscape were otherwise grubbed up. The formal gardens and the landscape park beyond were laid out in such a way so as to frame a distant vista of the spires of Lichfield Cathedral.

#### **Bromley Park Deer Park, Abbots Bromley (Asset Reference Number FRC369)**

5.2.3 There is documentary evidence for a deer park at Abbots Bromley in the 16<sup>th</sup> century. It is said to have been disparked by the Civil War, but Saxton depicts a park in the general vicinity of this asset on his map of 1577. An agricultural fieldscape is labelled 'Bromley Great Park' at this location on the 1842 tithe map, and 'Bromley Park' on the 1882 Ordnance Survey map, which also names 'Parkgate' farm. The likely outline of the former deer park is traceable as a continuous line of field and/or roadside boundaries. In places, these boundaries overlie a slight bank and outer ditch, which

are probably the remnants of the original bank that would have been topped by a pale.

## 6 Archaeological risk mapping

### 6.1 Introduction

- 6.1.1 The archaeological character of the route has been broken down into a series of Archaeological Sub-Zones (ASZ). These are described below and depicted in SES2 and AP2 ES Cultural hHeritage Map Book, Map Series CH-03.

### 6.2 Archaeological sub-zones

#### ASZ69: Blithe River Valley

- 6.2.1 This narrow zone covers the floodplain of the River Blithe to the south-east of the Blithfield Reservoir. The area contains significant deposits of Holocene alluvium with significant archaeological and palaeoenvironmental potential. The alluvium has the potential to contain stratified waterlogged archaeology and may contain interbedded organic (peat) horizons of high geoarchaeological and palaeoenvironmental potential. The potential for stratified waterlogged archaeology and geoarchaeological potential could be assessed by means of geoarchaeological/palaeo-environmental coring and trial trenching. The prehistoric to early medieval potential could be assessed by means of stream-walking, fieldwalking, geophysical survey and trial trenching.

#### ASZ70: Bromley Hurst and Ashfield

- 6.2.2 This risk zone is situated within a low-lying and gently undulating landscape. It was a woodland landscape in the early medieval period that through a gradual process of clearance and colonisation saw the development of early local industry. Being high in iron mineral deposits and having a ready source of fuel (wood), an iron smelting industry grew up around Abbots Bromley. There is also documented glass manufacture in the 16<sup>th</sup> century, as can still be seen in the form of local place-names (such as Glass Lane and at Bromley Hurst). This risk zone should be considered to have a high potential for containing hitherto unidentified archaeological remains of early medieval industry. This could be assessed by means of geophysical survey and trial trenching.

#### ASZ71: Bromley Park and Parkgate

- 6.2.3 This risk zone is situated within a low-lying and gently undulating landscape. It was a woodland landscape in the medieval and post-medieval period, and there were at least two known deer parks - Bromley Park and Bentilee Park. There may be potential for encountering archaeological remains of medieval date within this zone, such as elements of medieval deer parks. The archaeological potential of this risk zone could be tested by means of geophysical and fieldwalking survey.

## 7 References

- Barber, M. (2007), *The Blank Country? Neolithic enclosures and landscapes in the West Midlands*. In: P. Garwood, ed., *The Undiscovered Country: the earlier prehistory of the West Midlands*. Oxford: Oxbow Books, pp. 79-96.
- Barton, N. (2009), *The Late glacial or Latest Palaeolithic occupation of Britain*. In: J. Hunter and I. Ralston, *The Archaeology of Britain: an introduction from earliest times to the twenty-first century*. Abingdon: Routledge, pp. 18-52.
- Bassett, S. (1989), *The Origins of the Anglo-Saxon Kingdoms*. London: Leicester University Press.
- Basset, S. (1989), *In search of the origins of Anglo-Saxon kingdoms*. In: S. Bassett, *The Origins of the Anglo-Saxon Kingdoms*. London: Leicester University Press, pp. 3-27.
- Belford, P. (2011), *The archaeology of everything – grappling with post-medieval, industrial and contemporary archaeology*. In: S. Watt, ed., *The Archaeology of the West Midlands: A Framework for Research*. Oxford: Oxbow Books, pp.211-236.
- Breeze, P., Challis, K. and Kinsey, M. (2008), *Staffordshire Water Meadows Survey*.
- Bridgland, D.A., Howard, A.J., White, M.J. and White, T.S (2014), *The Quaternary of the Trent*. Oxford: Oxbow Books.
- British Geological Survey – Geology of Britain Viewer. Available online at: <http://mapapps.bgs.ac.uk/geologyofbritain/home.html>.
- Brooks, N. (1989), *The formation of the Mercian kingdom*. In: S. Bassett, *The Origins of the Anglo-Saxon Kingdoms*. London: Leicester University Press, pp. 159-170.
- Brown, M. and Farr, C.A. (2001), *Mercia, an Anglo-Saxon kingdom in Europe*. London: Leicester University Press.
- Buteux, S. and Chapman, H. (2009), *Where Rivers Meet, the archaeology of Catholme and the Trent-Tame confluence*. York: Council for British Archaeology Research Report 161.
- Dark, P. (2000), *The Environment of Britain in the First Millennium AD*. London: Duckworth.
- Dyer, C. (2000), *Woodlands and Wood-Pasture in Western England*. In: J. Thirsk, ed., *The English Rural Landscape*. Oxford: Oxford University Press, pp. 97-121.
- Dyer, C. (2000), *Everyday Life in Medieval England*. London: Hambledon & London.
- East Staffordshire Borough Council Development Services (1997), *Hoar Cross Conservation Area*. Unpublished report.
- Edwards, R. and Lake, J. (2010), *West Midlands Farmsteads and Landscapes Project. County Summary Report for Staffordshire*.
- English Heritage (2011), *Prehistoric Linear Boundary Earthworks*.
- Esmonde Cleary, S. (2011), *The Romano-British period: an assessment*. In: S. Watt, ed., *The Archaeology of the west midlands: a framework for research*. Oxford: Oxbow Books, pp. 127-147.
- Garwood, P., ed. (2007), *The Undiscovered Country: the earlier prehistory of the West Midlands*. Oxford: Oxbow Books.

- Garwood, P. (2011), The earlier prehistory of the west midlands. In: S. Watt, ed., *The Archaeology of the west midlands: a framework for research*. Oxford: Oxbow Books, pp. 9-99.
- Garwood, P. (2017), Late Neolithic and Early Bronze Age funerary monuments and burial traditions in the West Midlands. In: P. Garwood, ed., *The Undiscovered Country: the earlier prehistory of the West Midlands*. Oxford: Oxbow Books, pp. 134-165.
- Gelling, M. (1992), *The West Midlands in the Early Middle Ages*. London: Leicester University Press.
- Gelling, M. (2000), *Place-Names in the Landscape*. London: Phoenix Press.
- Hills, C. (2009), Early Historic Britain. In: J. Hunter and I. Ralston, eds., *The Archaeology of Britain: An Introduction from Earliest times to the Twenty-First Century*. London: Routledge, pp. 219-240.
- Hodder, M. (2017), Burnt mounds and beyond: the later prehistory of Birmingham and the Black Country. In: D. Hurst, ed., *Westward on the High-Hilled Plains: The Later Prehistory of the West Midlands*. Oxford: Oxbow Books, pp. 29-36.
- Hooke, D. (1998), *The Landscape of Anglo-Saxon England*. London: Leicester University Press.
- Hooke, D. (2001), Mercia: landscape and environment. In: M.P. Brown and C.A. Farr, eds, *Mercia, an Anglo-Saxon Kingdom in Europe*. London: Leicester University Press, pp. 161-72.
- Hooke, D. (2011), The post-Roman and the early medieval periods in the west midlands: a potential archaeological agenda. In: S. Watt, ed., *The Archaeology of the West Midlands: A Framework for Research*. Oxford: Oxbow Books, pp. 149-172.
- Horowitz, D. (2005), *The Place-Names of Staffordshire*. Brewood: David Horowitz.
- HS2 Ltd (2017), High Speed Two (HS2) Phase 2a (West Midlands - Crewe), *Environmental Statement*. Available online at: <https://www.gov.uk/government/collections/hs2-phase-2a-environmental-statement>.
- HS2 Ltd (2017), *High Speed Two (HS2) Phase 2a (West Midlands - Crewe), Background Information and Data, Cultural heritage survey report*, BID-CH-004-001. Available online at: [https://assets.publishing.service.gov.uk/government/uploads/system/uploads/attachment\\_data/file/628314/E86\\_BID-CH-004-001\\_WEB.pdf](https://assets.publishing.service.gov.uk/government/uploads/system/uploads/attachment_data/file/628314/E86_BID-CH-004-001_WEB.pdf).
- HS2 Ltd (2018), *High Speed Two (HS2) Phase 2a (West Midlands - Crewe), Supplementary Environmental Statement and Additional Provision Environmental Statement*. Available online at: <https://www.gov.uk/government/collections/hs2-phase-2a-supplementary-environmental-statement-and-additional-provision-environmental-statement>.
- HS2 Ltd (2018), *High Speed Two (HS2) Phase 2a (West Midlands - Crewe), Background Information and Data that accompanied Supplementary Environmental Statement (SES1) and Additional Provision Environmental Statement (AP1 ES)*. Available online at: <https://www.gov.uk/government/collections/hs2-phase-2a-supplementary-environmental-statement-and-additional-provision-environmental-statement#background-information-and-data>.
- HS2 Ltd (2019), *High Speed Two (HS2) Phase 2a (West Midlands - Crewe), Background Information and Data that accompanies Supplementary Environmental Statement 2 (SES2) and Additional Provision 2 Environmental Statement (AP2 ES)*. Available online at: <https://www.gov.uk/government/organisations/high-speed-two-limited>.



- Hunt, J. (2011), The Medieval Period. In: S. Watt, ed., *The Archaeology of the West Midlands: A Framework for Research*. Oxford: Oxbow Books, pp. 173-209.
- Hunter, J. and Ralston, I., ed. (2009), *The Archaeology of Britain: An Introduction from Earliest times to the Twenty-First Century*. London: Routledge.
- Hurst, D. (2011), Middle Bronze Age to Iron Age: a research assessment overview and agenda. In: S. Watt, ed., *The Archaeology of the west midlands: a framework for research*. Oxford: Oxbow Books, pp. 101-126.
- Hurst, D, ed. (2017), *Westward on the High-Hilled Plains: The Later Prehistory of the West Midlands*. Oxford: Oxbow Books.
- IBI Taylor Young (2015), *Abbots Bromley Conservation Area Appraisal*. Unpublished report.
- Knight, D., Howard, A.J. and Elliott, L. (2004), *Trent Valley Landscapes: The Archaeology of 500,000 Years of Change*. King's Lynn: Heritage Marketing and Publications Ltd.
- Lang, A. and Buteux, S. (2007), Lost but not forgotten: the Lower and Middle Palaeolithic occupation of the West Midlands. In: P. Garwood, ed., *The Undiscovered Country: the earlier prehistory of the West Midlands*. Oxford: Oxbow Books, pp. 6-22.
- Lindsay, J. (1979), *The Trent and Mersey Canal*. London: David & Charles.
- Michelle, P. B. and Carol, A. F. (2001), *Mercia: An Anglo-Saxon Kingdom in Europe*. London: Leicester University Press, pp. 13-22.
- Miln, P. (1971) Hoar Cross Hall
- Mithen, S. (1999), Hunter –gatherers of the Mesolithic. In: J. Hunter and I. Ralston, eds, *The Archaeology of Britain: an introduction from the Upper Palaeolithic to the Industrial Revolution*. London: Psychology Press, pp. 35-57.
- Mowl, T. and Barre, D. (2009), *The Historic Gardens of England. Staffordshire*. Bristol: Redcliffe.
- Myers, A. (2007), The Upper Palaeolithic and Mesolithic archaeology of the West Midlands. In: P. Garwood, ed., *The Undiscovered Country: the earlier prehistory of the West Midlands*. Oxford: Oxbow Books, pp. 23-38.
- Palliser, D. M. (1976), *The Staffordshire Landscape*. London: Hodder and Stoughton.
- Pevsner, N. (1974), *The Buildings of England: Staffordshire*. Harmondsworth: Penguin.
- Phillips, A.D.M. and Phillips, C.B. (2011), *An Historical Atlas of Staffordshire*. Manchester: Manchester University Press.
- Powell, A.B., Booth, P., Fitzpatrick, A.P. and Crockett, A.D. (2008), *The Archaeology of the M6 Toll, 2000-2003*. Oxford-Wessex Monograph 2. Oxford and Salisbury: Oxford Wessex Archaeology.
- Rackham, O. (1986), *The History of the Countryside*. London: Dent.
- Rackham, O. (1996), *Trees and Woodland in the British landscape*. London: Phoenix Giant.
- Ray, K. (2007), The Neolithic in the West Midlands. In: P. Garwood, ed., *The Undiscovered Country: the earlier prehistory of the West Midlands*. Oxford: Oxbow Books, pp. 51-78.

- Roberts, B.K. and Wrathmell, S. (2000), *An Atlas of Rural Settlement in England*, London: English Heritage, pp. 55-56.
- Rowlands, M.B. (1987), *The West Midlands from AD 1000*. London: Longman.
- Shaw, S. (1798), *The History and Antiquities of Staffordshire*, Vol. I. London: J Nichols & Son.
- Stringer, C. (2006), *Homo britannicus: the incredible story of human life in Britain*. London: Penguin Books.
- Sykes, G., Carter, S. and Bradbury, D. (2008), *Colton: History of a Staffordshire Village*. Colton: Colton History Society.
- Thirsk, J., ed. (2000), *The English Rural Landscape*. Oxford: Oxford University Press.
- Wardle, C. (2002), *Roman Staffordshire: the Five Towns and Beyond*. West Midlands Regional Research Framework for Archaeology, Seminar 3.
- Wardle, C. (2017), The Late Bronze Age and Iron Age in Staffordshire: the torc of the Midlands? In: D. Hurst, ed., *Westward on the High-Hilled Plains: The Later Prehistory of the West Midlands*. Oxford: Oxbow Books, pp. 97-109.
- Watt, S. (2011), *The Archaeology of the West Midlands: a Framework for Research*. Oxford: Oxbow Books.
- White, R. and Barker, P. (1998), *Wroxeter: Life and Death of a Roman City*. Stroud: Tempus Publishing.
- Williams, A. and Martin, G.H. (1992), *Domesday Book: A Complete Translation*. London: Penguin.
- Williamson, T. (2002), *The Transformation of Rural England: Farming and the Landscape 1700 – 1870*. Exeter: University of Exeter Press.
- Woodward, A. (2007), Ceremonial landscapes and ritual deposits in the Neolithic and Bronze Age periods in the West Midlands. In: P. Garwood, ed., *The Undiscovered Country: the earlier prehistory of the West Midlands*. Oxford: Oxbow Books, pp. 182-193.
- Zaluckyj, S. (2011), *Mercia: The Anglo-Saxon Kingdom of Central England*. Logaston: Logaston Press.

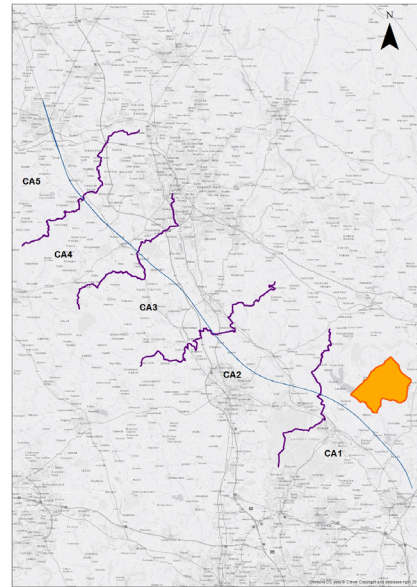


# **Annex A: Historic landscape character assessment 20: Blythe Valley and Bromley**

# HLCA 20 Blyth Valley and Bromley CA 1

## Key Characteristics

- An area of gently undulating landscape largely sculptured by geological processes
- Surface geology comprises Pleistocene gravels with the Blythe River as a defining feature
- Regular fields as the result of planned enclosure in the eighteenth century
- Patches of surviving woodland and 18th and 19th century farmstead dispersed across the landscape between Stockwell Heath and Newborough



## Description

This HLCA chiefly extends across the rural parish of Abbots Bromley, the boundaries of which can be traced back into the pre-Norman period. A network of country lanes extends out from the village across a landscape of open fields with patches of woodland, across which run a number of small streams. There are a number of scattered historic farmsteads across the landscape, a number of which appear to date back into a phase of woodland clearance and enclosure in the later medieval or early post-medieval period.

The River Blythe is a defining feature of the landscape to the south of Abbots Bromley, it contains Pleistocene deposits and Holocene sand and gravel with significant archaeological and palaeontological potential. There is extensive documentary evidence indicating that this area fell within the medieval Needwood Forest, and saw extensive clearance from the thirteenth century onwards. At least two medieval deer parks are known to have existed in the area.

Outside Abbots Bromley itself, the built heritage is largely represented by dispersed settlement between villages, with farmsteads and rural buildings as well as remains of estates and grounds of larger houses such as Hoar Cross Hall, which has a substantial associated landscaped park. There has been very little modern development within the area, which retains much of its pre-modern character.

## Legend

### Field Systems

- Early Assarts and Field Development
- Early Irregular Fields
- Early Piecemeal Fields
- Late Drained Wetland / Floodplain Fields
- Post Medieval
- Early Regular Fields
- Post Medieval
- Late Semi-Planned Fields
- Post Medieval
- Late Planned Fields
- Late Semi-Planned Fields
- Late Assarts and Field Development
- Industrial

- Modern Reorganised Enclosures
- Modern Reorganised Fields
- Post-War

### Ornamental

- Post-Medieval Parkland; Historic Parks and Gardens
- Industrial

### Settlement

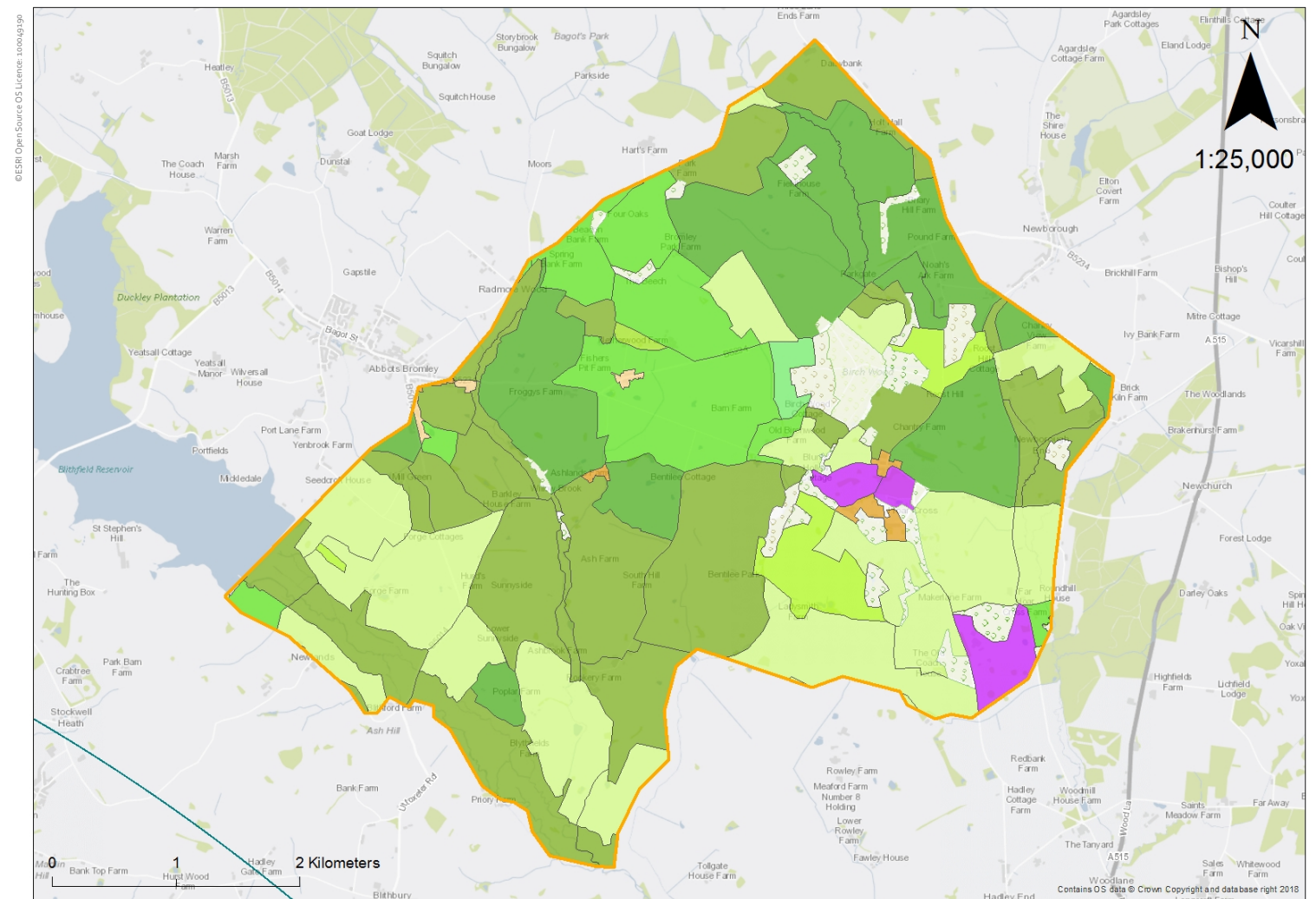
- Post-Medieval Settlement
- Industrial
- Modern Settlement
- Post-War

### Water Bodies

- Modern Water Bodies
- Post-War

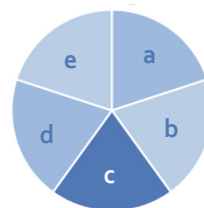
### Woodland

- Ancient Woodland
- Medieval
- Post-Medieval Plantation
- Post-Medieval Plantation
- Post Medieval
- Pre-Modern Other Woodland
- Pre-Modern Other Woodland
- Industrial
- Modern Plantation;
- Modern Regenerated Woodland
- Post-War

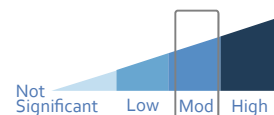


## Value of Asset

- Evidential** - intactness of historic landscape assets (**medium**)
- Aesthetic** - experience of historic landscape (**medium**)
- Communal** - sense of settlement patterns and community based territories (**medium**)
- Historic and cultural** associations (**moderate**)
- Research potential** - potential for new information to emerge (**moderate**)



Historic Landscape Character Area Value



Value of Asset

MODERATE

## Magnitude of Impact

**Scale of Effect:** An HLCA defined by the 18th and 19th century enclosure patterns and post medieval periods with interspersed historic settlements

**Duration/Reversibility of Effect:** A significant temporary effect has been identified but not a permanent significant effect.

Overall Impact

MEDIUM

## Significance of Effect matrix

		Magnitude of Impact				
		No Change	Minimal	Low	Medium	High
Value of Asset	High	Neutral	Minor	Moderate	Major	Major
	Moderate	Neutral	Minor	Minor	<b>Moderate</b>	Major
	Low	Neutral	Negligible	Minor/Negligible	Minor	Moderate
	Not Significant	Neutral	Negligible	Negligible	Negligible	Negligible

Significant Effect

YES

High Speed Two (HS2) Limited  
Two Snowhill  
Snow Hill Queensway  
Birmingham B4 6GA

08081 434 434  
[HS2Enquiries@hs2.org.uk](mailto:HS2Enquiries@hs2.org.uk)  
[www.hs2.org.uk](http://www.hs2.org.uk)