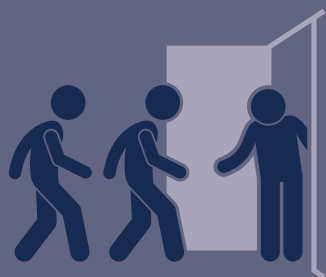
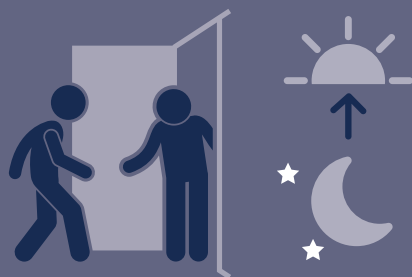


Vulnerable tenants are being exploited by gangs involved in drug crime. Know the signs to spot.

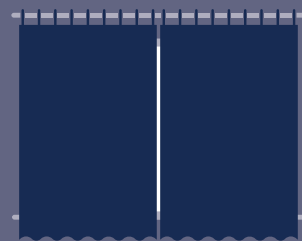
County line drug gangs exploit vulnerable tenants and take over their homes where they operate. Know what to look for:



Is a tenant getting more visitors?



Do visitors come at unusual times
of the day or night?



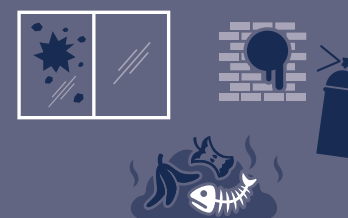
Are curtains or blinds almost
always shut?



Has a tenant stopped leaving
their house?



Are there suspicious smells
around the property?



Has anti-social behaviour increased
around the property?

If you have concerns that a vulnerable tenant is being exploited, you should report it to
Crime Stoppers on 0800 555 111.



Home Office

Working in partnership with

CrimeStoppers.