



Public Health  
England

Protecting and improving the nation's health

# **Suspected and laboratory confirmed reported norovirus outbreaks in hospitals (England) and norovirus laboratory reports (England and Wales): weeks 48 to 52, 2018**

Health Protection Report  
Volume 13 Number 3  
25 January 2019

## Suspected and laboratory confirmed reported norovirus outbreaks in hospitals: outbreaks occurring in weeks 48 to 52, 2018 (England)

The hospital norovirus outbreak reporting scheme (HNORS) recorded 22 outbreaks occurring between weeks 48 and 52 2018, all of which led to ward/bay closure or restriction to admissions and 13 of which (59 per cent) were recorded as laboratory confirmed due to norovirus. From week 1 (week beginning 1 January 2018) to week 52 (week beginning 24 December 2018), 353 outbreaks have been reported. Ninety-six per cent (339) of reported outbreaks resulted in ward/bay closures or restrictions to admissions and seventy-one per cent (250) were laboratory confirmed as due to norovirus.

**Table: Suspected and laboratory-confirmed reported norovirus outbreaks in hospitals in England, with regional breakdown: outbreaks occurring in weeks 01-52 2018**

PHE Centre	Outbreaks between weeks 48-52/2018			Outbreaks between weeks 01-52/2018		
	Outbreaks	Ward/bay closure †	Lab confirmed	Outbreaks	Ward/bay closure †	Lab confirmed
East of England						
East Midlands	3	3	3	13	12	10
London				3	3	3
North East	5	5	3	74	70	53
North West	1	1		14	14	7
South East	3	3	1	29	29	22
South West	3	3	2	118	113	95
West Midlands	2	2	1	59	57	2
Yorkshire and Humberside	5	5	3	43	41	28
<b>Total</b>	<b>22</b>	<b>22</b>	<b>13</b>	<b>353</b>	<b>339</b>	<b>250</b>

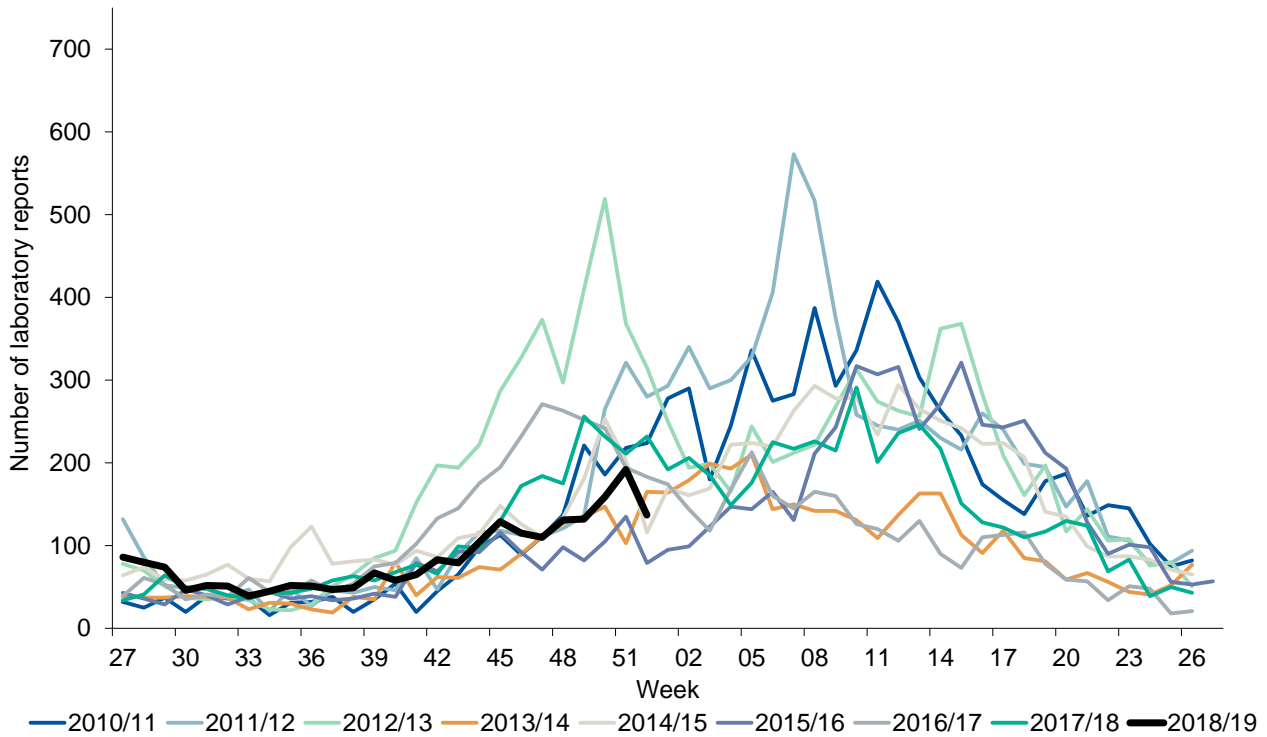
† Note: not all outbreaks result in whole wards closures, some closures are restricted to bays only

## Norovirus laboratory reporting: data from SGSS (England and Wales)

From week 01, 2018 to week 52, 2018 there were 6381 laboratory reports of norovirus. This is comparable to the average number of laboratory reports for the same period in the five years between 2013 and 2017 (6555).

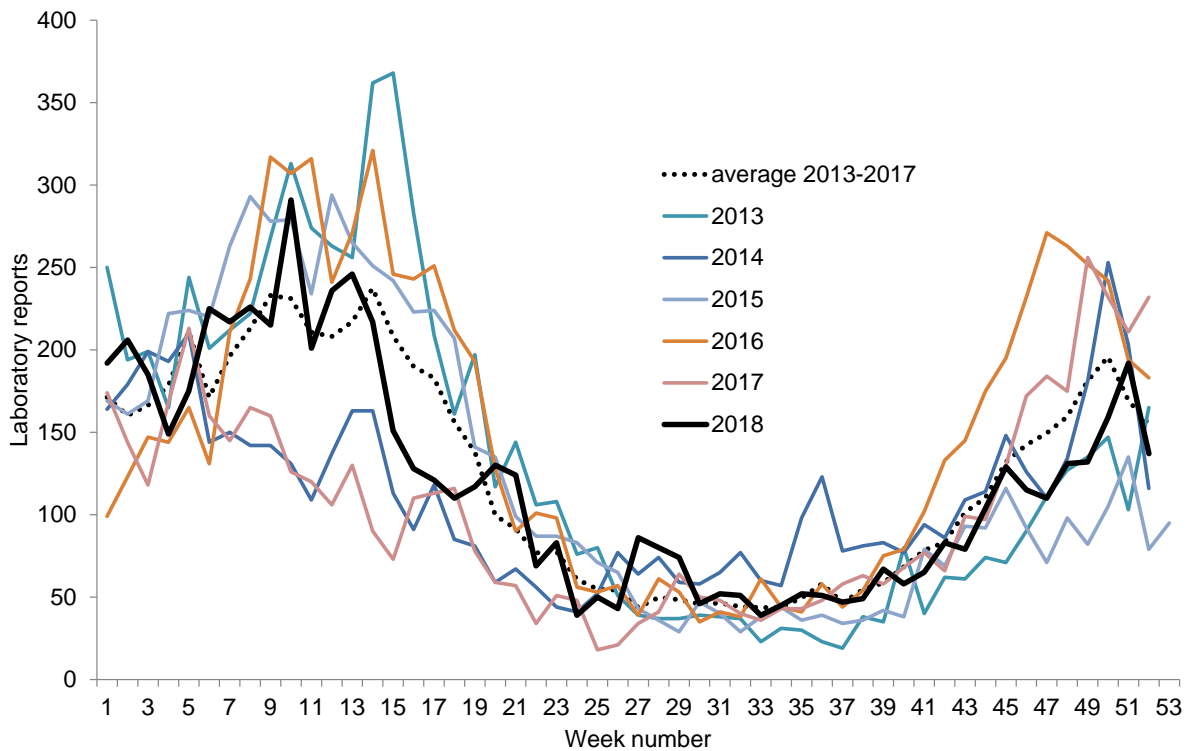
**Note:** Data from laboratory reporting are subject to a reporting delay and the number reported in the most recent weeks is likely to rise as further laboratory reports are received.

**Figure 1: Seasonal comparison of laboratory reports of norovirus 2010/11-2018/19 (England and Wales)**



**Note.** The norovirus season runs from week 27 in year 1 to week 26 in year 2, i.e. week 27 2016 – week 26 2017 July to June, in order to capture the winter peak in one season.

**Figure 2: Current weekly norovirus laboratory reports compared to weekly mean reports 2013-2017 (England and Wales)**



## About Public Health England

Public Health England exists to protect and improve the nation's health and wellbeing, and reduce health inequalities. We do this through world-class science, knowledge and intelligence, advocacy, partnerships and the delivery of specialist public health services. We are an executive agency of the Department of Health and Social Care, and are a distinct delivery organisation with operational autonomy to advise and support government, local authorities and the NHS in a professionally independent manner.

### *About Health Protection Report*

*Health Protection Report* is a national public health bulletin for England and Wales, published by Public Health England. It is PHE's principal channel for the dissemination of laboratory data relating to pathogens and infections/communicable diseases of public health significance and of reports on outbreaks, incidents and ongoing investigations.

Public Health England, Wellington House, 133-155 Waterloo Road, London SE1 8UG

Tel: 020 7654 8000 [www.gov.uk/phe](http://www.gov.uk/phe)

Twitter: [@PHE\\_uk](https://twitter.com/PHE_uk) Facebook: [www.facebook.com/PublicHealthEngland](https://www.facebook.com/PublicHealthEngland)

Queries relating to this document should be directed to:  
noruOBK@phe.gov.uk

© Crown copyright 2019

You may re-use this information (excluding logos) free of charge in any format or medium, under the terms of the Open Government Licence v3.0. To view this licence, visit [OGL](https://www.ogil.gov.uk) or email [psi@nationalarchives.gsi.gov.uk](mailto:psi@nationalarchives.gsi.gov.uk). Where we have identified any third party copyright information you will need to obtain permission from the copyright holders concerned.

Published **January 2019**

PHE publications gateway number: **2018733**

