

Evening Seminar

Offender to Entrepreneur

– sharing best practice from the USA in enabling individuals to develop a crime free future

David Morgan FRSA

Enterprise Partnership Lead | Novus

Wednesday, 9 January, 2019

NOVUS
FOUNDATIONS FOR CHANGE[®]

WINSTON
CHURCHILL
MEMORIAL
TRUST



@academyjustice



Academy for Social Justice
Commissioning



Academy Overview

- **The Academy's mission** is to bring people together to share knowledge, skills and practice and **to promote excellence in social justice commissioning**
- The Academy was **created in 2007** and now has over **4000 cross sector members**
- **Services** are designed to **support the development of social justice commissioning** and include nationwide events, eLearning, commissioning themed learning groups and web pages offering commissioning information



ACADEMY for SOCIAL JUSTICE
COMMISSIONING

Learn, Network & Share



@Academyjustice



@DmogDavid

NOVUS⁷
FOUNDATIONS FOR CHANGE[®]



@Novuschange

Supported by

PERU Policy Evaluation
& Research Unit

at Manchester Metropolitan University



@MMUPolicyEval

WINSTON
CHURCHILL
MEMORIAL
TRUST

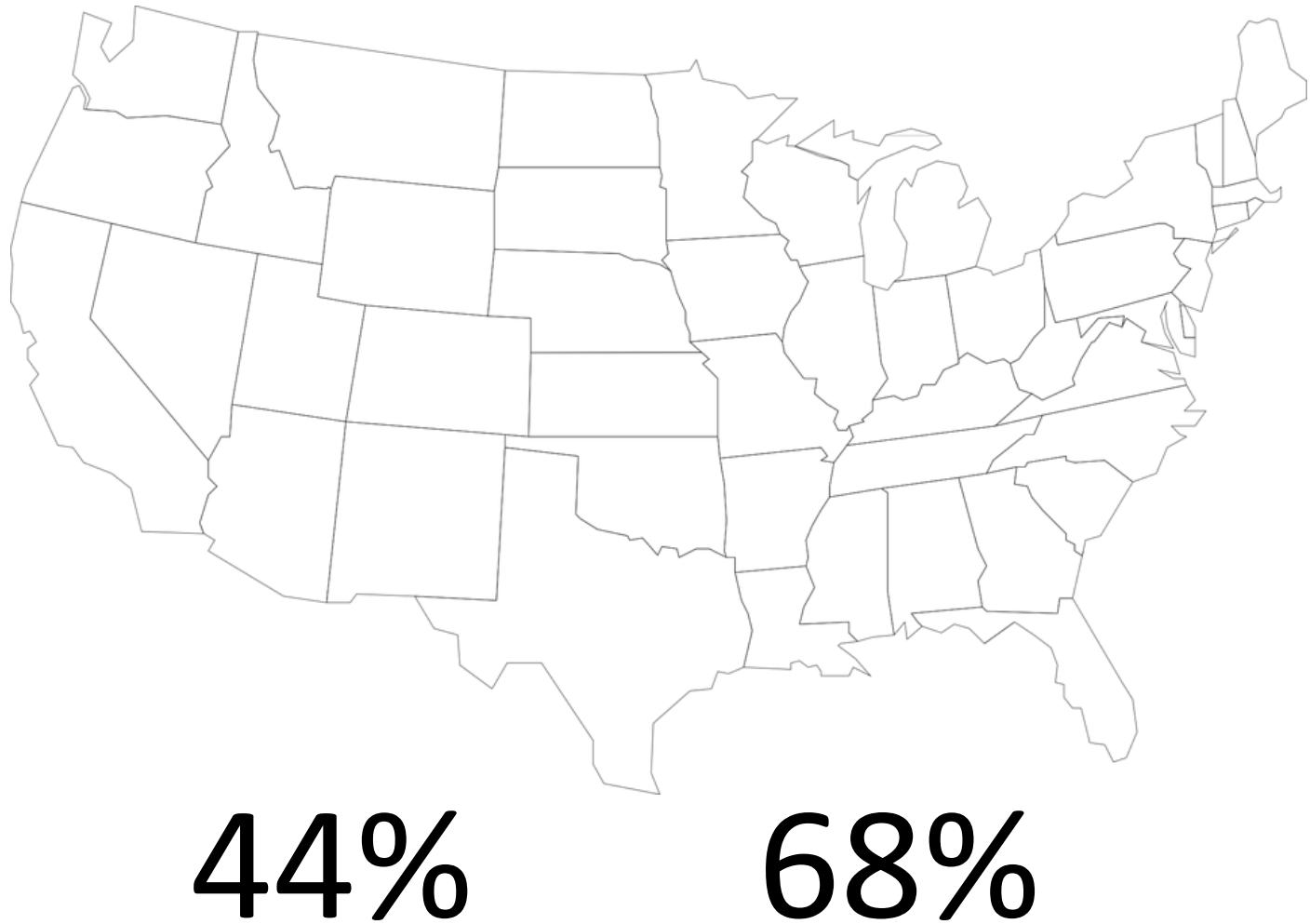
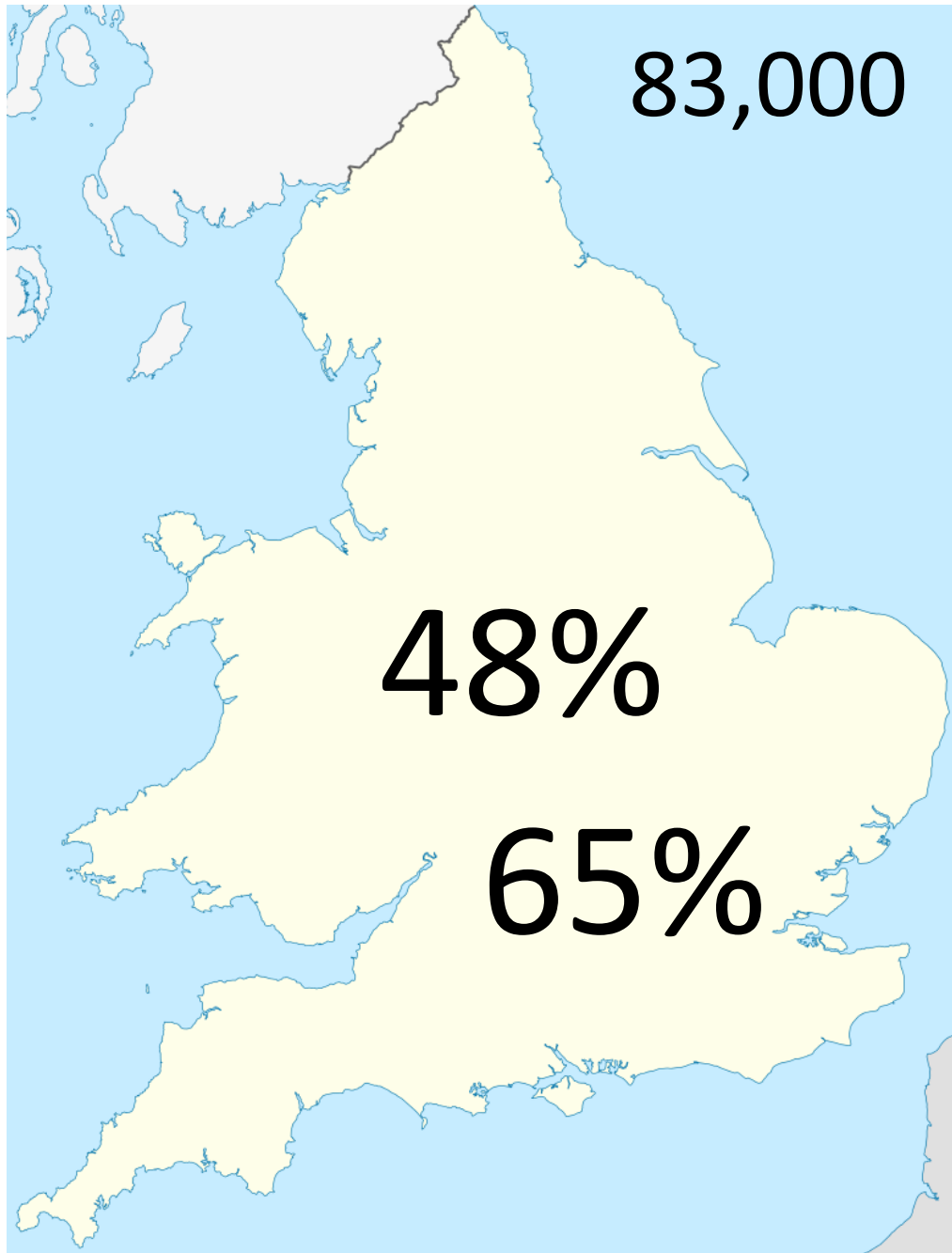


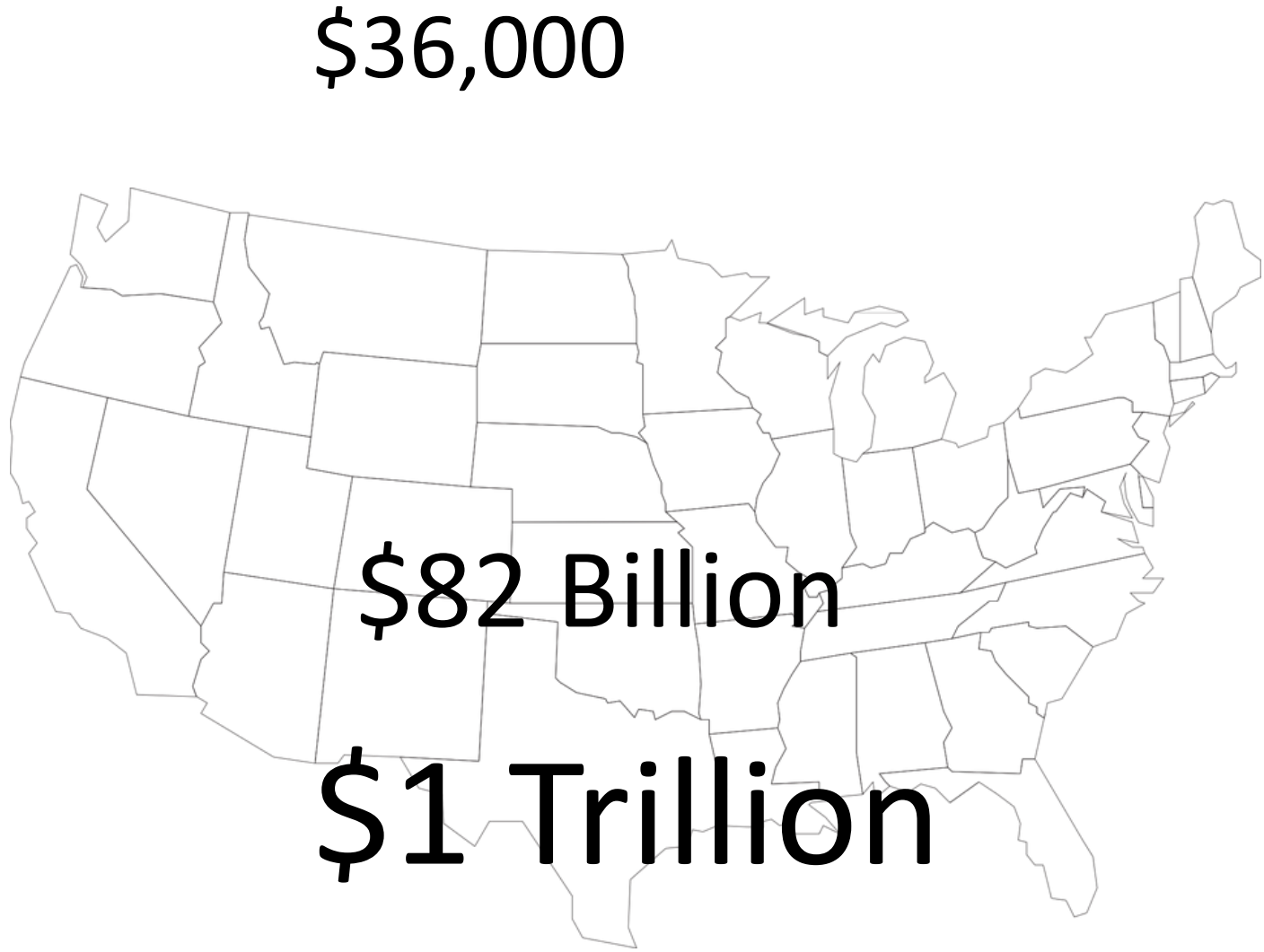
@wcmtuk

- Established over 20 years ago and delivers education, training and employability services to more than 65,000 offenders in over 60 sites across the UK
- Part of LTE Group (formerly Manchester College Group)
- The Manchester College (FE)
- MOL
- Total People
- UCEN (HE)
- Novus Cambria (HMP Berwyn)
- www.novus.ac.uk

WINSTON
CHURCHILL
MEMORIAL
TRUST

- Churchill Fellowships are unique programs of overseas research – 150 awarded each year
 - UK Citizens from all parts of society travel the world to research innovative solutions
 - Enable UK to benefit from global best practice – Education, Health, Communities, Culture
 - Any UK adult citizen can apply, regardless of qualifications, age or background. They are chosen not for their past achievements, but for the power of their ideas and their potential to be change-makers.
-
- Empowering Individuals to learn from the world.
 - (2020 Applications open in May 2019)
 - www.wcmt.org.uk



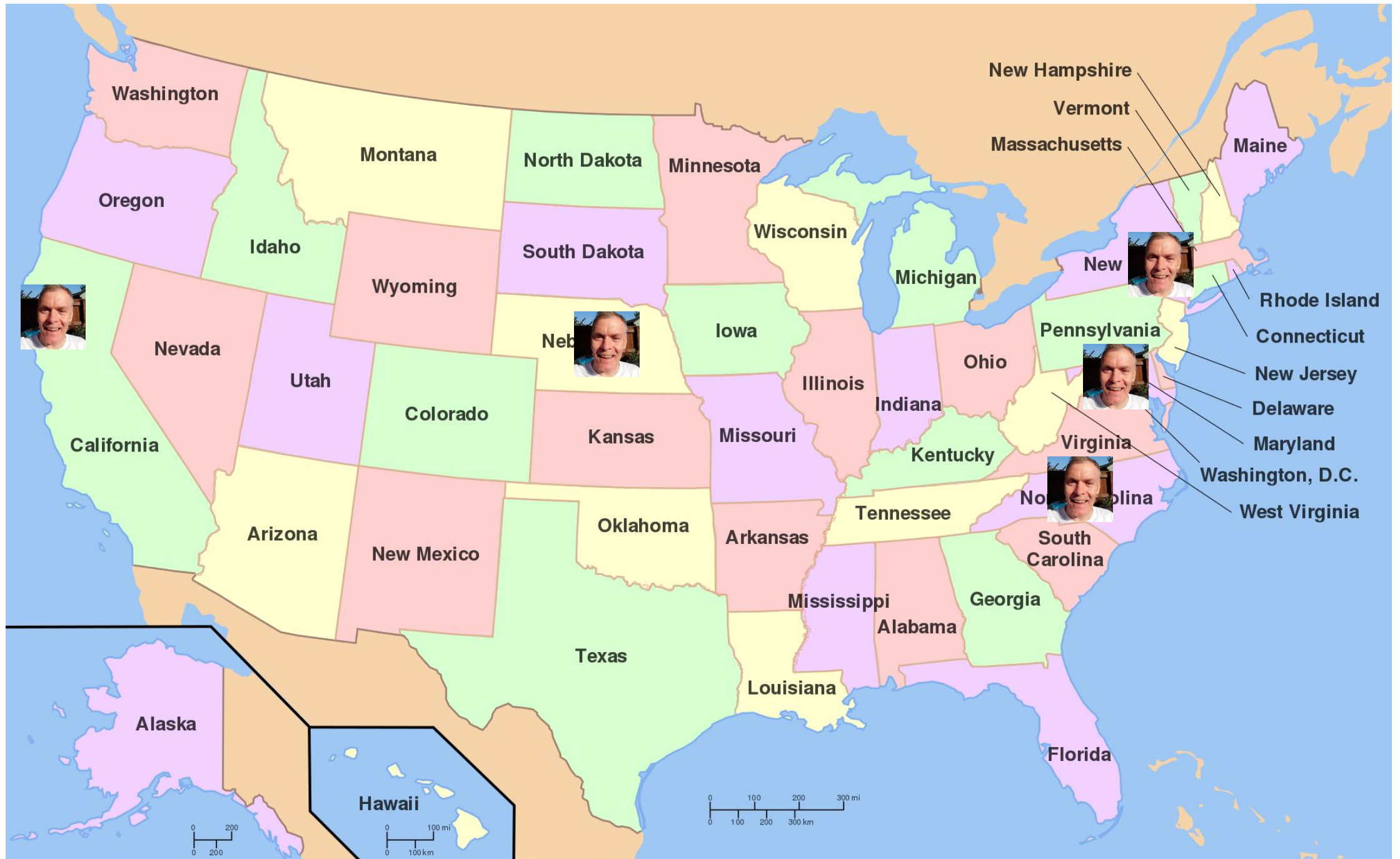


➤ WHY THE US?

DEFY VENTURES

Defy (v.): To challenge or dare a person to do something deemed impossible.





➤ ORGANISATIONS & PROJECTS

- Conbody
 - Defy Ventures Northern California
Soleadad Correctional Facility
 - Last Mile Coders
 - L'Haim Foods
 - Delancey Street Foundation
 - Washington DC Office of Small Business
Development
 - Changing Perceptions
 - Aspire Project
 - Clean Decisions
 - Mayor's Office of Returning Citizens
 - Zero Model NOVA
 - Open for Business Ventures
 - Defy Ventures Nebraska
Omaha Correctional Facility
Omaha Community Corrections
York Correctional Facility for Women
 - Inmates to Entrepreneurs
 - Correction Enterprises
 - Community Success Initiatives
 - Resilience Education
 - Dillwyn Correctional Facility
 - Flikshop
 - Refoundary
-

➤ THE STATS

Defy Ventures Northern California

500 Entrepreneurs In Training Graduates
180 Engaged in Post-Release Programming

<5% Recidivism

Last Mile Coders

200+ participants
50+ Releases

0% Recidivism

Defy Ventures Nebraska

100 Entrepreneurs In Training Graduates
20 Engaged in Post-Release Programming
100% Employment for EIT's in work release facilities

< 5% recidivism

Resilience Education

500+ graduates in custody program
50+ releases

<3% Recidivism

Inmates to Entrepreneurs

700 + Program participants

70+ Small businesses started (minimum)

➤ THE STATS

Changing Perceptions
Aspire Project

60 Program participants
50 Graduates
<2% Recidivism

Clean Decisions

Cleaning Business run by former Aspire Graduate
Employs formerly incarcerated individuals
Significantly lower rates of recidivism than national average

Zero Model NOVA

150 People into sustained employment
13 Businesses launched

Refoundary

12 participants (LA and New York)
10 Incubated businesses
0% Recidivism
125 Employees
\$30,000+ “Into the system” per annum per person

➤ THE HOW – IN CUSTODY

DEFY VENTURES – 6 Month program

BE THE CEO OF YOUR NEW LIFE

PART TIME – Facilitated by Defy and Former EIT's (Mentors)

Personal Growth and Development (PGD)

Resilience

Forgiveness

Emotional Intelligence

Employment Preparation

Entrepreneurial Skills development

Business Preparation

Business Coaching Days

PGD days

Business Pitching Competition

Graduation & Certification

Pre Release Support

Post Release Support

RESILIENCE EDUCATION– 3 x 3 Month programs

ENTREPRENUERIAL RE-ENTRY

PART TIME – Facilitated by MBA students

Personal Growth and Development (PGD)

Socratic case study led learning

Personal and Social Skills

Entrepreneurial skills development

Financial Literacy

Business Foundations

Coaching / Mentoring Sessions

Completion and Certification

Pre Release Support

Post Release Support

➤ CUSTODY



➤ CUSTODY



➤ THE HOW – IN THE COMMUNITY

Changing Perceptions– 6 month program

ASPIRE

FULL TIME– Facilitated by Program Director

Personal Development

Mindfulness

Wellness

Humbleness

Resilience

Personal Finance

Business Fundamentals

Business Start Up (details)

Graduation

Post graduation support

Trading support

REFOUNDARY – 18 month Program - PAID “Apprenticeship”

PATHWAYS TO FINANCIAL INDEPENDENCE

FULL TIME – Facilitated by Executive Directors / Mentors

Personal Growth and Development (PGD)

Life Skills Training

Wellness

Mindfulness

Resilience

Financial Education

Craft Skills

Sales and Administration

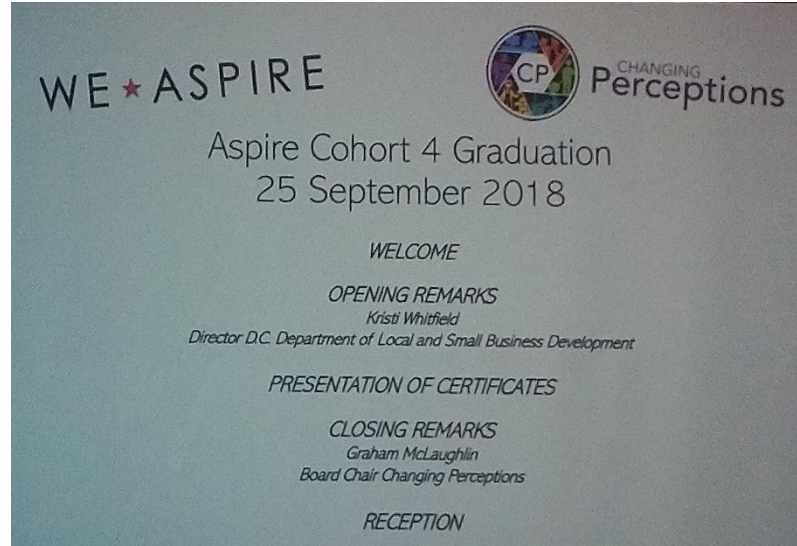
Business Incubation

Monthly Revenue Goals

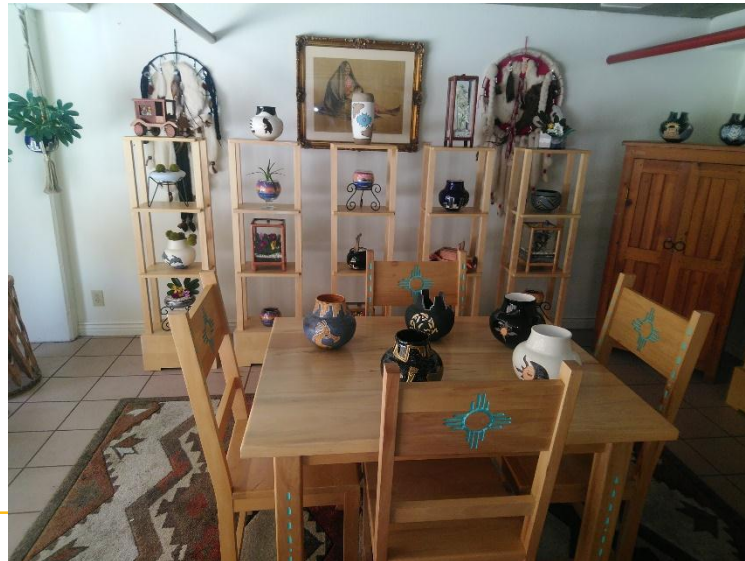
12 month decision – Seek Employment

- Become incubated business

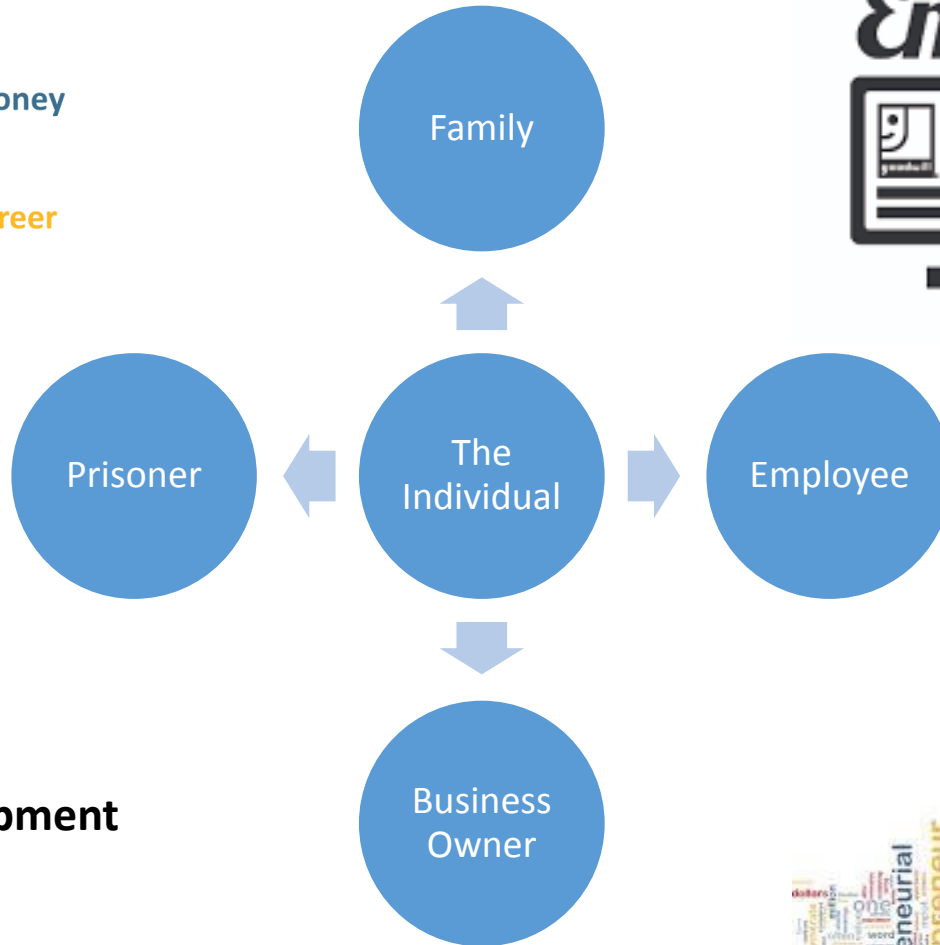
➤ COMMUNITY



➤ COMMUNITY



THE LEARNING



Employment
JOB READY

Long term supported approach

Personal responsibility

Career choices

Underpinned by Entrepreneurial development

Stable employment focus

Today's start up is tomorrows employer



➤ KEY COMMISSIONING POINTS

It is not just about the “nuts and bolts” of being self employed.

Utilising entrepreneurial skills can positively impact the Individual, Family, Employment and Society

Knowing yourself, your gifts and how to harness them is key

The journey must start as early as possible (In custody / TTG / Community)

It needs to be commissioned for a sustainable future and not the short term

Invest in the best



“The empires of the future are the empires of the mind”

The power of their ideas and their potential to be change-makers.

A romantic couple stands on a hilltop at sunset, their arms raised in a gesture of triumph or joy. The scene is bathed in the warm, golden light of the setting sun, with a blue sky and soft clouds in the background. The couple is silhouetted against the bright light, creating a sense of unity and shared accomplishment.

LET US CREATE OUR
OWN STORY

Offender to Entrepreneur

Thanks for listening

Any Questions?

davidmorgan@novus.ac.uk

07730 617891

 @DmogDavid

Any Questions ?



@academyjustice



Academy for Social Justice
Commissioning