



Education & Skills
Funding Agency

Apprenticeship qualification achievement rates specification 2017 to 2018

Version 3

This document sets out how we will calculate apprenticeship qualification achievement rates in 2017 to 2018.

January 2019

Of interest to colleges, training organisations and employers.

Contents

Introduction and purpose of document	3
Understanding the terminology	3
Changes from version 2 of this document	3
Changes from version 1 of this document	3
Changes from the 2016 to 2017 document	4
Changes from the 2016 to 2017 QAR dataset	4
About qualification achievement rates	5
Purpose of qualification achievement rates	5
Apprenticeship QAR methodology	5
Apprenticeship business rules	6
Exclusions from apprenticeship QARs	6
Processing standard files	9
Process flow diagram	9
Identifying apprenticeship programme aims	10
Processing further education college mergers	11
Processing learner reference number changes	11
Identifying overdue continuing aims and planned breaks	13
Qualification achievement rate calculations	15
Calculating the percentage of leavers below the minimum standards threshold	16
Further Information	17
Contents of the qualification achievement rates dataset for records created from the ILR	18
Source or derivation of fields in the qualification achievement rates dataset	18
Contents of the qualification achievement rates dataset for records created from the LEOP dataset	29
Source or derivation of fields in the qualification achievement rates dataset	29

Introduction and purpose of document

1. This document provides technical information about how we process information provided in the Individualised Learner Record (ILR) and Large Employer Outcome Pilot (LEOP) data collections to produce the qualification achievement rates (QAR) dataset.
2. This dataset produces the apprenticeship 2017 to 2018 QAR and minimum standards dashboard. This document also provides information about how we generate the information in the QAR and minimum standards dashboard.
3. Unless otherwise stated, we refer to apprenticeship frameworks and standards in this document as an 'apprenticeship'.
4. Please read this document alongside the [ILR standard file specifications and reference data documents](#).

Understanding the terminology

5. The terms 'we' and 'ESFA' refer to the 'Education and Skills Funding Agency' and associated staff.
6. When we refer to 'you' or 'providers', this includes colleges, training organisations, local authorities and employers that receive funding from us, or Advanced Learner Loans (loans) payments from the Student Loans Company (SLC) on behalf of learners, to deliver education and training.

Changes from version 2 of this document

7. We have clarified how we will treat sixth form colleges that have converted into academies (see paragraph 26), and updated how we derive the funding qualifying period exclusion (Fund_Qual_Excl - see the table from paragraph 62).

Changes from version 1 of this document

8. We have made these changes to the QAR dataset:
 - aims recorded with a withdrawal reason of transfer to another aim with the same provider are only included in the transfer exclusions for overall and timely QARs where a new aim is recorded with a start date that is within 120 days of the end date of the withdrawn aim
 - excluded former Employer Ownership Pilot (EOP) provision
 - identify High Needs Students (HNS) in the dataset to enable analysis of them

Changes from the 2016 to 2017 document

9. We have made these changes to the QAR dataset:

- included apprenticeships recorded under Funding model 36 (Apprenticeships (from 1 May 2017))
- excluded apprenticeship standards from the timely achievement rates
- included the rules for adding aims from the 2017 to 2018 ILR data

Changes from the 2016 to 2017 QAR dataset

10. The changes to the QAR dataset are below.

Fields whose derivations have changed

Field name	Reason for change
L_PriorPcode	Uses L_PriorPcode from ILR standard file, for standard file derivation refer to the standard file specification .
P_Count_Timely, P_Ach_Timely	These no longer include apprenticeship standards.
Plan_Break_Overall_Excl	New: identifies planned breaks excluded from the overall QAR measure.
Plan_Break_Timely_Excl	New: identifies planned breaks excluded from the timely QAR measure.
Transfer_Overall_Excl	New: identifies transfers excluded from the overall QAR measure.
Transfer_Timely_Excl	New: identifies transfers excluded from the timely QAR measure.
Transfer_Overall_Excl, Transfer_Timely_Excl	120 day tolerance applied: if no new aim is recorded as starting within 120 days of the transfer, this exclusion is not applied
EOP_Excl	New: identifies former Employer Ownership Pilot (EOP) provision excluded from the QAR measures.
High_Needs_Students	New: identifies learners with the Learner Funding and Monitoring indicator 'High Needs Students' (HNS)
Fund_Qual_Excl	Derivation to exclude trailblazer apprenticeships updated.

Removed fields

Field name	Reason for change
FM36_Excl	Funding model 36 apprenticeships are now included in the dataset.

About qualification achievement rates

Purpose of qualification achievement rates

11. The apprenticeship QAR is a measure of the quality of the apprenticeship programmes that a provider delivered in a particular funding year. We use QARs to identify provision that falls below the minimum quality standards. Provision falling below the minimum quality standards is one of the factors identified in [New Challenges New Chances](#) that prompts us to take action under our [Approach to Intervention process](#).
12. We use QARs in the [National Achievement Rate Tables](#) to show apprentices and employers the relative quality of provision. The Office for Standards in Education, Children's Services and Skills (Ofsted) also use them as part of their inspection process.

Apprenticeship QAR methodology

13. The apprenticeship QAR methodology has two measures – the 'overall' QAR and the 'timely' QAR.
14. We use the overall QAR to assess whether a provider meets the minimum quality standards.
15. We base the overall QAR on the hybrid end year. The hybrid end year is the latter of:
 - the actual end year of an apprenticeship
 - the planned end year of an apprenticeship
 - the reporting year

The reporting year is included to capture those overdue continuing learning aims, overdue planned breaks or late completions recorded in the following academic year (up to R04).

16. The apprenticeships included in the 2017 to 2018 overall QAR are those with a hybrid end year of 2017 to 2018.
17. We base the timely QAR on the planned end year of an apprenticeship framework. We do not calculate the timely QAR for apprenticeship standards. The apprenticeships considered for the 2017 to 2018 timely QAR measure are those with a planned end date in the funding year ending 31 July 2018. In timely QARs, an apprenticeship is counted as achieved if the date of achievement is:
 - on or before the planned end date, or
 - no more than 90 days after the planned end date

18. There can be a delay between completing an apprenticeship and the notification of the achievement. To account for this delay and ensure all relevant achievements are included, we use information from the 2018 to 2019 R04 ILR to identify completed and achieved apprenticeships with a planned end date in 2017 to 2018 that were not recorded in the final return of the 2017 to 2018 ILR. The apprenticeship must be achieved no more than 90 days after the planned end date to be included in the timely achievement rate.

Apprenticeship business rules

19. We produce the [business rules](#) that describe how we will calculate the QAR and which apprenticeships will not be included in the QAR calculations.

20. Some apprenticeships are not included in the QARs to ensure the results are more credible and appropriate. The reasons include:

- if QARs are affected by circumstances where we have agreed an exception (for example, if the learner transferred to new provision due to intervention from us)
- the apprenticeship is not funded by us
- the apprenticeship is an Access to Apprenticeship and the learner is not employed

Exclusions from apprenticeship QARs

21. We produce a file for you that contains the apprenticeships that are not included in the calculations. This file shows the reason why they were not included. The table below describes the scenarios where we exclude apprenticeships. The definition of the derived variables below are in [ILR standard file specifications and reference data documents](#).

Description	Rules for identifying the excluded apprenticeship
An apprentice has transferred to a new provider because of intervention from us.	<p>For ILR files for 2013 to 2014, programme aims where P_ProgStatus is 10 (Learner has transferred to a new provider forced by ESFA intervention) and Withdrawal Reason is not 41 (Transfer to another provider to undertake learning that meets a specific government strategy).</p> <p>For ILR files for 2014 to 2015 onwards, programme aims where D_SuccessRateStatus is 10 (Learner has transferred to a new provider forced by ESFA intervention or to support a specific government strategy) and Withdrawal Reason is not 41 (Transfer to another provider to undertake learning that meets a specific government strategy).</p>

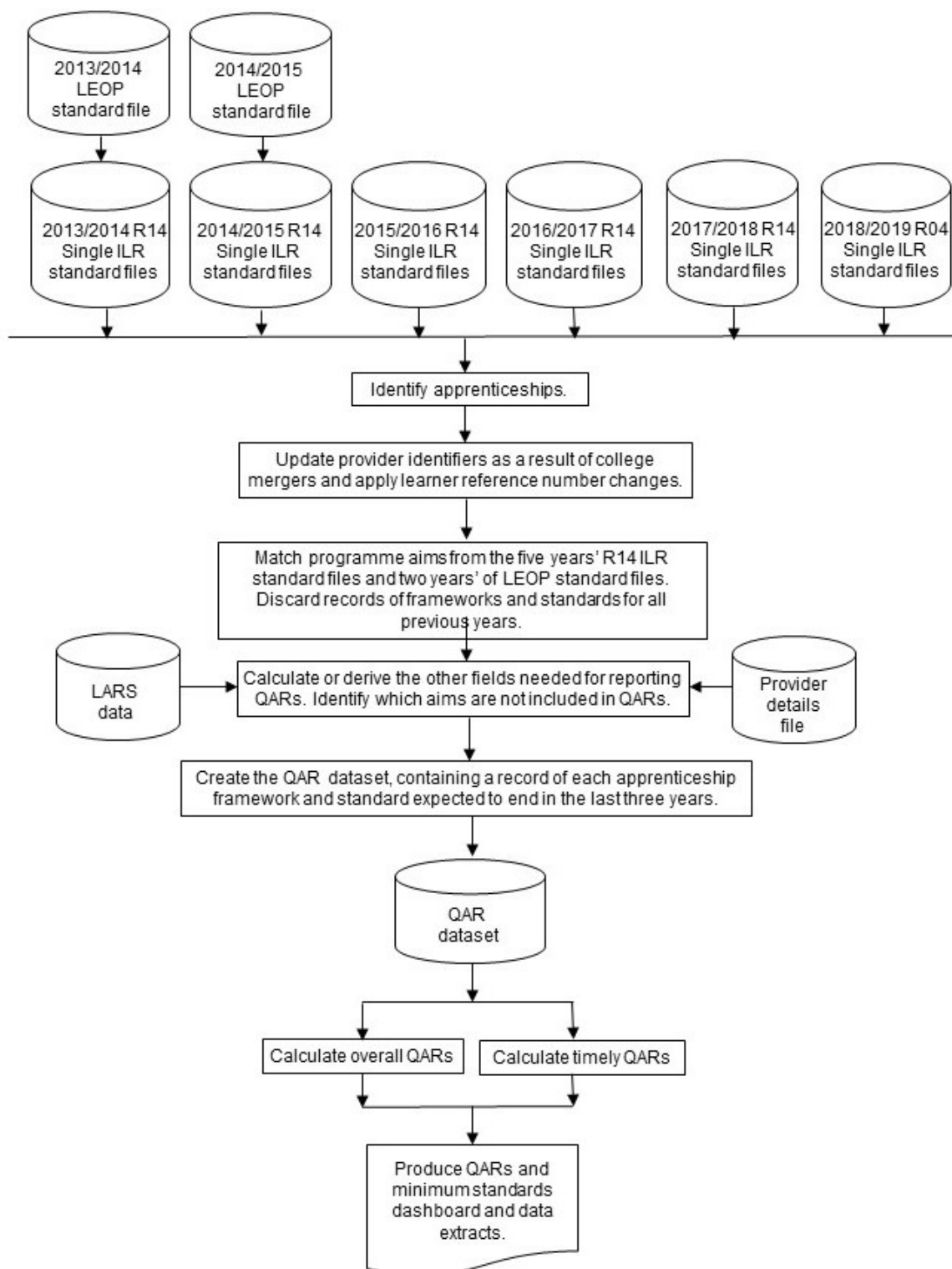
Description	Rules for identifying the excluded apprenticeship
<p>For the overall QAR, where an apprentice has transferred to a different programme with the same provider.</p>	<p>For ILR files for 2013 to 2014, programme aims where P_ProgStatus is 8 (Learner has transferred to a new programme at the same provider) and the Learning Actual End Date is before 1 August of the relevant year.</p> <p>For ILR files for 2014 to 2015 onwards, programme aims where D_SuccessRateStatus is 8 (Learner has transferred to a new programme at the same provider) and the Learning Actual End Date is before 1 August of the relevant year.</p> <p>Where an apprentice has transferred to a different programme, as above, the Learning Start Date for the new programme (matching on Unique Learner Number and UKPRN) must be 120 days or less than the Learning Actual End Date of the original programme.</p>
<p>For the timely QAR, where an apprentice has transferred to a different programme with the same provider before the planned end date or no more than 90 days after it.</p>	<p>For ILR files for 2013 to 2014, programme aims where P_ProgStatus is 8 (Learner has transferred to a new programme at the same provider) and the Learning Actual End Date is no more than 90 days after the Learning Planned End Date.</p> <p>For ILR files for 2014 to 2015 onwards, programme aims where D_SuccessRateStatus is 8 (Learner has transferred to a new programme at the same provider) and the Learning Actual End Date is no more than 90 days after the Learning Planned End Date.</p> <p>Where an apprentice has transferred to a different programme, as above, the Learning Start Date for the new programme (matching on Unique Learner Number and UKPRN) must be 120 days or less than the Learning Actual End Date of the original programme.</p>
<p>For the overall QAR, where an apprentice has temporarily withdrawn from the apprenticeship due to an agreed break in learning.</p>	<p>For ILR files for 2013 to 2014, programme aims where P_ProgStatus is 11 or 12 (Learner is taking a planned break from learning OR NVQ achieved but learner is now taking a planned break from learning on the framework).</p> <p>For ILR files for 2014 to 2015 onwards, programme aims where D_SuccessRateStatus is 11 (Learner is taking a planned break from learning).</p> <p>Under certain circumstances, we do not exclude programme aims where the learner has temporarily withdrawn from the aim due to an agreed break in learning. See paragraphs 41 to 47.</p>
<p>For the timely QAR where an apprentice has temporarily withdrawn from the apprenticeship due to an agreed break in learning before the planned end date or no more than 90 days after it.</p>	<p>For ILR files for 2013 to 2014, programme aims where (P_ProgStatus) is 11 or 12 (Learner is taking a planned break from learning OR NVQ achieved but learner is now taking a planned break from learning on the framework) and the Learning Actual End Date is no more than 90 days after the Learning Planned End Date.</p> <p>For ILR files for 2014 to 2015 onwards, programme aims where D_SuccessRateStatus is 11 (Learner is taking a planned break from learning).and the Learning Actual End Date is no more than 90 days after the Learning Planned End Date.</p>
<p>For the timely QAR when an apprentice is on an apprenticeship standard.</p>	<p>Programme aims where the Programme Type is 25 (Apprenticeship standard).</p>

Description	Rules for identifying the excluded apprenticeship
<p>Apprenticeships where the learner has withdrawn from the apprenticeship within the funding qualifying period, and has not achieved the learning aim.</p> <p>This does not apply to trailblazer pilot standards</p>	<p>Programme aims where:</p> <ul style="list-style-type: none"> the planned duration is 168 days or more the actual duration is less than 42 days; and the Completion Status is 3 (Withdrawal) <p>Programme aims where:</p> <ul style="list-style-type: none"> the planned duration is between 14 and 167 days the actual duration is less than 14 days; and the Completion Status is 3 (Withdrawal) <p>The planned duration of the aim, in days, is the difference between the Learning Start Date and the Learning Planned End Date.</p> <p>The actual duration of the aim, in days, is the difference between the Learning Start Date and the Learning Actual End Date.</p>
<p>Apprenticeships with a planned end date after the last day of the QAR reporting period (31 July 2018).</p>	<p>Programme aims where the Learning Planned End Date is later than 31 July 2018.</p>
<p>Classroom learning provision reported through the employer responsive funding stream.</p>	<p>Programme aims where any Learning Delivery Monitoring Code is 125 (Non-workplace learning in employer responsive funding model).</p>
<p>Apprenticeships that we do not fund.</p>	<p>Programme aims where the Funding Model is equal to 99 (No ESFA funding) in all years.</p> <p>We will exclude all trailblazer pilot standards without a net employer contribution payment recorded (i.e. any payments minus reimbursements). We calculate this for programme aims where the Funding model is 81 (Other Adult) and the sum of all payment records minus all reimbursement repayment records is equal to zero.</p>
<p>Changes to records previously submitted 2 or more years ago.</p> <p>The example given is for apprenticeships reported in 2016 to 2017. The exclusion also applies to apprenticeships reported in 2015 to 2016 or 2014 to 2015 that meet the same conditions for the corresponding earlier years.</p>	<p>For apprenticeships reported in the 2016 to 2017 ILR, that were previously reported in the 2014 to 2015 ILR or earlier, and not reported in the 2015 to 2016 ILR. Where</p> <ul style="list-style-type: none"> the actual or planned end dates are not in 2016 to 2017 or later the apprenticeship was first reported complete in the 2016 to 2017 ILR <p>The record is not an update to an apprenticeship that would otherwise have been an overdue planned break counted in the 2016 to 2017 hybrid end year.</p> <p>This applies only to 2016 to 2017 and previous years.</p>
<p>Former Employer Ownership Pilot learning aims.</p>	<p>Programme aims where any Learning Delivery Monitoring Code is 351 (Former Employer Ownership Pilot Provision)</p>
<p>SILR exclusion</p>	<p>Aims in the QAR business rules that do not meet the definition of an apprenticeship programme aim.</p>

Processing standard files

Process flow diagram

22. This flow diagram below shows how ILR and LEOP information for multiple funding years is processed to produce the QAR dataset, which is the source of the information used for the QAR and minimum standards dashboard.



Identifying apprenticeship programme aims

23. The method for identifying apprenticeship programme aims for each funding year in the ILR and LEOP datasets is set out in the following table.

Source and year	Rules for identifying apprenticeship programme aims
ILR for 2013 to 2014 onwards	<p>Programme aims where:</p> <ul style="list-style-type: none"> the Aim Type is 1 (Programme aim); and the Programme Type is 2, 3, 10, 20, 21, 22, 23 or 25 (Advanced level apprenticeship, Intermediate Level Apprenticeship, Higher Apprenticeship, Higher Apprenticeship - level 4, Higher Apprenticeship - level 5, Higher Apprenticeship – level 6, Higher Apprenticeship – level 7+, Apprenticeship standard respectively)
LEOP for 2013 to 2014 and 2014 to 2015	<p>Programme aims where:</p> <ul style="list-style-type: none"> the Aim Type is 1 (Programme aim); and the Programme Type is 2, 3, 10, 20, 21, 22, 23 (Advanced level apprenticeship, Intermediate Level Apprenticeship, Higher Apprenticeship, Higher Apprenticeship - level 4, Higher Apprenticeship - level 5, Higher Apprenticeship – level 6, Higher Apprenticeship – level 7+)

24. We use the component aims of an apprenticeship framework programme to determine whether the competency aim is subcontracted. We add this information to the programme aim, although the component aims of the programme are not included in the achievement rates dataset. For 2017 to 2018, we will not report the subcontractor for apprenticeship standard programmes.

25. We identify the component aims of an apprenticeship for each funding year in the ILR dataset using the following rules:

Source and year	Rules for identifying apprenticeship main assessment or component aims
ILR for 2013 to 2014 onwards	<p>Aims where:</p> <ul style="list-style-type: none"> the Aim Type is 3 (component aim); and the Programme Type is 2, 3, 10, 20, 21, 22 23, or 25 (Advanced level apprenticeship, Intermediate Level Apprenticeship, Higher Apprenticeship, Higher Apprenticeship - level 4, Higher Apprenticeship - level 5, Higher Apprenticeship – level 6, Higher Apprenticeship – level 7+, Apprenticeship standard respectively)

Processing further education college mergers

26. For Further Education college mergers that take place up to and including 31 July 2018, we will combine the ILR learning aims from any pre-merger UKPRNs and we will produce the QAR for the 2017 to 2018 reporting year for the post-merger UKPRN. Where the Further Education college merger took place on or after 1 August 2018, this falls in the new funding year, therefore we will produce the QAR for the 2017 to 2018 reporting year under the pre-merger UKPRNs. We will treat sixth form colleges that have converted into academies the same as Further Education college mergers; we will combine ILR learning aims from the sixth form college UKPRN with the new academy UKPRN for the year in which they merge, after that QARs will no longer be calculated for the academy.
27. Programme aims are combined by changing the merged college's provider number (UKPRN) to the new college's provider number. The original provider number is kept in the QAR dataset in the UKPRN_orig field.
28. This merger process only applies to colleges. It does not apply to the mergers of any other types of provider (for example, private training providers).

Processing learner reference number changes

29. Providers assign the Learner reference number and we use this number to match learning aims across years.
30. If, for any reason, a learner's Learner reference number changes, either within a funding year or between years, then you must record this using the Learner reference in previous year field.
31. We use the information in the Learner reference in the previous year field to change the Learner reference number for previous years to the latest Learner reference number. We keep the original Learner reference number in the QAR dataset in the LearnRefNumber_orig field.
32. If you do not return the Learner reference in previous year field when there has been a change, then the process of matching aims does not work correctly. This creates two records in the QAR dataset for the same aim: one using the old Learner reference number and one using the new Learner reference number. Where the aim from the earlier year's ILR file does not have any achievement data, this will reduce your QAR.
33. If you use the Learner reference in previous year field when there **has not** been a change in the learner's Learner reference number, then this will prevent us from correctly matching that learner's aims.
34. You **must** remove the data from this field between years, as detailed in the [ILR specification](#), otherwise the learners will not match correctly.

Example:

Learner A has a Learner reference number of 'LNA1234' in 2016 to 2017. Due to a change in the provider's management information system, Learner A has a new Learner reference number in 2017 to 2018 of 'LRA9876'. In order for QAR matching to occur correctly, this must be recorded as follows:

- In 2016 to 2017:
 - Learner reference number = LNA1234
 - Learner reference number in previous year is not returned
- In 2017 to 2018:
 - Learner reference number = LRA9876
 - Learner reference number in previous year = LNA1234
- In 2018 to 2018:
 - Learner reference number = LRA9876
 - Learner reference number in previous year is not returned

Matching programme aims across years

35. Many apprenticeship programmes take more than one year to complete, meaning that the same programme aim for an apprentice can appear in more than one ILR or LEOP file.

36. As we base apprenticeship QARs on the programme aim's planned end date, we merge the ILR and LEOP files from all years to identify all the programme aims that are planned to be completed in the years being reported on.

37. We combine the ILR and LEOP files for a funding year into a single file before we merge the yearly files.

38. We use various combinations of variables to ensure that we match the correct programme aims. The UKPRN, Learner reference number, Programme type and Framework code or Standard code are matched together with the following combinations, in the following sequence:

- Learning start date, Learning planned end date and Learning actual end date
- Learning start date and Learning planned end date
- Learning start date and Learning actual end date
- Learning start date

Apprenticeship pathway code is not included in this combination.

39. When matching between ILR data files for each year from 2013 to 2014 up to 2017 to 2018, the final match is UKPRN, Learner reference number, Programme type, Framework code or Standard code and Learning start date.
40. Once we match programme aim records we discard those from previous years, leaving just the latest information of the programme aim in the QAR dataset.

Identifying overdue continuing aims and planned breaks

41. Continuing learning aims (with a Completion status of 1 'The learner is continuing or intending to continue the learning activities leading to the learning aim') in the R14 ILR return for a funding year, that do not have a corresponding record in the following funding year, are treated as a withdrawal for the overall methodology.

For example, if the year you submitted the record on the ILR is '2016/2017' and there is no corresponding record in 2017 to 2018 R14 ILR return:

- the hybrid end year (P_Hybridendyr) is set to 2017; and
- P_Count_Overall is set to 1; and
- P_Ach_Overall is set to 0

42. Aims where the learner is on a planned break (with a Completion status of 6 'Learner has temporarily withdrawn from the aim due to an agreed break in learning'), are treated as a withdrawal for the overall methodology where:

- they do not have a corresponding restart record in the same funding year; or
- they do not have a corresponding restart record in the following funding year; or
- if the planned break was recorded in the ILR R14 return for funding year 2016 to 2017, they do not have a corresponding restart record in the R04 ILR return of the funding year 2018 to 2019

43. An ILR record is a restart record if it has a Learning Delivery Funding and Monitoring Type of 'RES' with a Learning Delivery Funding and Monitoring Code of 1 (Learning aim restarted).

44. We match restart records to planned break records by matching on UKPRN, Learner reference number, Programme type and Framework code or Standard code where the Original learning start date on the restart record matches the Learning start date or Original learning start date of the planned break record; this allows for situations where the planned break was itself a restart.

45. For example, an aim where the learner is on a planned break, that is submitted in the 2015 to 2016 ILR (YearAimSubmitted is '2015/16'), has a corresponding restart record if:

- the UKPRN, Learner reference number, Learning aim reference number Programme type and Framework code or Standard code on the planned break record is the same as the UKPRN, Learner reference number, Programme type and Framework code or Standard code on a restart record; and
- either the Learning start date or the Original learning start date on the planned break record is the same as the Original learning start date on the restart record; and
- the restart record was submitted in the 2015 to 2016, 2016 to 2017 or 2017 or 2018 ILR (YearAimSubmitted is '2015/16', '2016/17' or '2017/18')

If an aim where the learner is on a planned break that is submitted in the 2015 to 2016 ILR (YearAimSubmitted is '2015/16') does not have a corresponding restart record:

- the reporting year is set to one year after the later of the expected end year or actual end year; and
- P_Count_Overall is set to 1; and
- P_Ach_Overall is set to 0

46. An aim where the learner is on a planned break, that is submitted in the 2016 to 2017 ILR (YearAimSubmitted is '2016/17'), has a corresponding restart record if:

- the UKPRN, Learner reference number, Programme type and Framework code or Standard code on the planned break record is the same as the UKPRN, Learner reference number, Programme type and Framework code or Standard code on a restart record; and
- either the Learning start date or the Original learning start date on the planned break record is the same as the original learning start date on the restart record; and
- the restart record was submitted in the 2016 to 2017 or 2017 to 2018 ILR, or the 2018 to 2019 R04 ILR (YearAimSubmitted is '2016/17', '2017/18' or '2018/19')

47. If an aim where the learner is on a planned break that is submitted in the 2016 to 2017 ILR (YearAimSubmitted is '2016/17'), does not have a corresponding restart record:

- the reporting year is set to one year after the later of the expected end year or actual end year; and
- P_Count_Overall is set to 1; and
- P_Ach_Overall is set to 0

Qualification achievement rate calculations

48. We use the following fields from the QAR dataset to calculate the overall QARs:

- Hybrid end year (P_Hybridendyr)

This field is the later of the actual learning end year (P_Actendyr), the expected learning end year (P_Expendyr), or the reporting year.

- P_Count_Overall

This field is used in the overall QAR calculation and indicates whether the programme aim has ended (a Learning actual end date is present), or it is an overdue continuing learning aim or an overdue continuing planned break. Programme aims where P_Count_Overall is 1 are included in the overall QAR calculations.

- P_Ach_Overall

This field is used in the overall QAR calculation and indicates whether a programme aim has been achieved (achieved learning aims have an Outcome of 1 (Achieved)).

49. For a given funding year the overall QAR percentage is:

$$\frac{\text{Number of programmes that have been achieved}}{\text{Number of programmes that have ended}} \times 100$$

50. For a given hybrid end year (P_Hybridendyr) the overall QAR percentage is:

$$\frac{\text{Number of programme aims where P_Ach_Overall is 1}}{\text{Number of programme aims where P_Count_Overall is 1}} \times 100$$

51. The main fields from the QAR dataset that we use to calculate the timely QAR for apprenticeship frameworks are as follows:

- Expected end year (P_Expendyr)

This field is the first calendar year of the funding period the Learning planned end date falls in. For example, if the Learning planned end date falls within the 2017 to 2018 funding year, P_Expendyr is '2017'.

- P_Count_Timely

We use this field in the timely QAR calculation and indicates whether the programme aim was expected to be completed in a particular funding year. Programme aims where P_Count_Timely is 1 are included in the timely QAR calculations.

- P_Ach_Timely

We use this field in the timely QAR calculation and indicates whether a programme aim has been achieved.

52. For a given funding year the timely QAR percentage is:

$$\frac{\text{Number of achieved programmes by their planned end date or no more than 90 days after it}}{\text{Number of programmes expected to be completed}} \times 100$$

53. For a given expected end year (P_Expendyr) the timely QAR percentage is calculated as follows.

$$\frac{\text{Number of programme aims where P_Ach_Timely is 1}}{\text{Number of programme aims where P_Count_Timely is 1}} \times 100$$

Calculating the percentage of leavers below the minimum standards threshold

54. Minimum standards use the overall QAR and uses data for hybrid end year 2017/2018 only.

55. The first stage in calculating the percentage of provision that is below minimum standards is to identify whether the all age overall QAR for the apprenticeship level of an apprenticeship is below the minimum standards threshold. Minimum standard thresholds are accessible via the [qualification achievement rates](#) webpage.

56. If the all age overall QAR for the apprenticeship level of an apprenticeship is below the minimum standard threshold, then we classify all the programme aims for that apprenticeship level as being below the minimum standards threshold.

57. The programme aims below the minimum standard threshold for all apprenticeships and apprenticeship levels are then added together to give a figure for the total number of programme aims below the minimum standards threshold for the provider.

58. The percentage of programme aims below the minimum standard threshold is:

$$\frac{\text{The total number of programme aims below the minimum standard threshold}}{\text{The total number of learning aims where P_Count_Overall is 1}} \times 100$$

59. We then compare the percentage of programme aims below the minimum standard threshold to the minimum standards tolerance level, which is 40%.

60. If the percentage of programme aims below the minimum standard threshold is equal to or greater than the minimum standards tolerance, your apprenticeship provision is below minimum standards and there may be formal intervention by us, as set out in the [Approach to Intervention process](#).

Further Information

61. If you need more information you can phone the service desk on 0370 267 0001 or email sde.servicedesk@education.gov.uk. Please provide a detailed explanation of your query.

Contents of the qualification achievement rates dataset for records created from the ILR

Source or derivation of fields in the qualification achievement rates dataset

62. The five reference files used in some of the derivations are as follows:

- a) The 2017/2018 Framework lookup file – this file holds programme aim information from the Learning Aims Reference System (LARS) as at the hard close of the 2017 to 2018 ILR (18 October 2018).
- b) The 2017/2018 Standard lookup file – this file holds programme aim information from the Learning Aims Reference System (LARS) at the hard close of the 2017 to 2018 ILR (18 October 2018).
- c) The 2017/2018 Provider Details file – this file holds providers' details from the Provider and Organisation Information Management System (PIMS), as at 31 July 2018.
- d) The 2017/18 Funded Provider Details file – this file holds details of providers who received funding for the funding year.
- e) The look up used to determine the delivery region and delivery local authority of a Delivery location postcode will be obtained from the National Statistics Postcode Lookup (UK) May 2018. This will be available to download from the Office of National Statistics website.

Data item	Description	Data values	Source (ILR)	Derivation
Age_Band	A banding of the age on the start of the apprenticeship programme.	1 = 16 to 18 2 = 19 to 23 3 = 24 or more	Derived	Set to 1 if D_AgeAimStart is 0 to 18. Set to 2 if D_AgeAimStart is 19 to 23. Set to 3 if D_AgeAimStart is 24 or greater, or unknown.
App_Stand_NoNetPay_Excl	Indicates a learner on a trailblazer pilot standard without a net employer contribution payment being recorded.	0 or 1	Derived	Set to 1 if: <ul style="list-style-type: none"> • the Programme Type is 25, the Funding Model is 81; and • the sum of the Payment Records in the ILR Apprenticeship Financial Record entity with codes 1 and 2 MINUS the sum of the Payment Records with code 3 is zero Otherwise set to 0.

Data item	Description	Data values	Source (ILR)	Derivation
ClassLearn_Excl	Indicates that the programme aim is a classroom learning aim reported through the employer responsive funding stream. Classroom learning aims reported through the employer responsive funding stream are not included in QARs.		Derived	For ILR files for 2013 to 2014 onwards, set to 1 if the Programme Type is 2, 3, 10, 20, 21; 22, 23 or 25 and there is a Learning Delivery Funding and Monitoring Type of 'LDM' with a Learning Delivery Funding and Monitoring Code of 125 (Non-workplace learning in employer responsive funding model). Otherwise set to 0.
CompStatus	The completion status of the programme aim.		ILR standard files	Set to Completion Status .
D_AchieveRateStatus	The status of the learning aim for calculating QARs.		ILR standard files / Derived	For ILR files for 2013 to 2014, set to the value of the ILR derived variable P_ProgStatus . For ILR files for 2014 to 2015 onwards, set to the value of the ILR derived variable D_SuccessRateStatus .
D_AgeAimStart	The age of the apprentice on the start date of the programme aim.		ILR standard files	Set to the value of the ILR derived variable D_AgeAimStart .
Datasource	The source of the record on the QARs dataset, which is either the ILR or the LEOP dataset.	ILR	Derived	Set to 'ILR'.
DelLocPostCode	The postcode of the delivery location.		ILR standard files	Set to Delivery Location Postcode .
DelLocPostCode_GOR	The delivery location postcode Government office region.		Postcode lookup	Obtained from the National Statistics Postcode Lookup (UK) May 2018.
DelLocPostCode_LocalAuthority	The delivery location postcode local authority district.		Postcode lookup	Obtained from the National Statistics Postcode Lookup (UK) May 2018.
EOP_Excl	Indicates that the programme aim is former EOP provision.	0 or 1	Derived	Set to 1 if and there is a Learning Delivery Funding and Monitoring Type of 'LDM' with a Learning Delivery Funding and Monitoring Code of 351 (Former Employer Ownership Pilot). Otherwise set to 0.
Ethnicity	The apprentice's ethnic background.		ILR standard files	Set to Ethnicity .

Data item	Description	Data values	Source (ILR)	Derivation
FreeMeals	Indicates that the learner is eligible for free meals, or is eligible and receiving free meals. 19+ learners are not eligible for free meals.		Derived	For ILR files for 2013 to 2014, set to -1. For ILR files for 2014 to 2015 onwards if the Learner Funding and Monitoring Type is 'FME' and the Learner Funding and Monitoring Code is 1 or 2 (14-15 year old learner is eligible for free meals OR 16-19 year old learner is eligible for and in receipt of free meals), set to the Learner Funding and Monitoring Code , otherwise set to -1.
Fund_Qual_Excl	Indicates that the learner has withdrawn from a learning aim before the qualifying number of days for funding has been met. (The qualifying period for funding aims with a planned duration of less than 14 days is 1 day. Fund_Qual_Excl is always set to 0 for aims with a planned duration of less than 14 days.) This does not apply to trailblazer pilot standards.	0 or 1	Derived	The planned duration of the aim, in days, is the difference between the Learning Start Date and the Learning Planned End Date . The actual duration of the aim, in days is the difference between the Learning Start Date and the Learning Actual End Date . Set to 1 if the Programme Type is not 25, or the Programme Type is 25 and the Funding Model is not 81; and <ul style="list-style-type: none"> the planned duration is 168 days or more, the actual duration is less than 42 days and the Completion Status is 3 (Withdrawn); or the planned duration is between 14 and 167 days, the actual duration is less than 14 days and the Completion Status is 3 (Withdrawn) Otherwise set to 0.
FworkCode	Framework code.		ILR standard files	Set to Framework Code .
FworkName	Framework name.		Derived	Set to FworkName from the framework lookup.
High_Needs_Students	Indicates that the learner is a high needs student in receipt of element 3 'top-up' funding from the local authority	0 or 1	ILR standard files	Set to L_HNS
L_PriorPcode	The apprentice's home postcode.		ILR standard files	Set to L_PriorPcode (Postcode prior to enrolment)
L_PriorPcode_GOR	The apprentice's home postcode Government office region.		Postcode lookup	Obtained from the National Statistics Postcode Lookup (UK) May 2018.

Data item	Description	Data values	Source (ILR)	Derivation
L_PriorPcode_LocalAuthority	The apprentice's home postcode local authority district.		Postcode lookup	Obtained from the National Statistics Postcode Lookup (UK) May 2018.
LearnActEndDate	The learning actual end date (DDMMYYYY).		ILR standard files	Set to Learning Actual End Date .
LearnAimBelowMS	Indicates whether the programme aim is classified as being below the minimum standards threshold.	0 or 1	Derived	See paragraphs 54 and 60 for details of how the classification below minimum standards is derived. Set to 1 if the programme aim is classified as being below minimum standards. Otherwise set to 0.
LearnPlanEndDate	The learning planned end date (DDMMYYYY).		ILR standard files	Set to Learning Planned End Date .
LearnRefNumber	The learner reference number.		ILR standard files	Set to Learner Reference Number .
LearnStartDate	The learning start date (DDMMYYYY).		ILR standard files	Set to Learning Start Date .
LLDDHealthProb	Indicates whether the apprentice considers that they have a learning difficulty, disability or health problem.		ILR standard files	Set to LLDD and Health Problem .
Not_Funded_Excl	Identifies whether an apprenticeship has ever received funding from us. Non-funded aims are not included in QARs.	0 or 1	Derived	Set to 0 if the Funding Model is not 99 (No ESFA funding) in any year. Otherwise set to 1.
Outcome	The learning outcome of the programme aim.		ILR standard files	Set to Outcome .
Overdue_Continuing_Aim	Indicates whether the aim is an overdue continuing aim.	0 or 1	Derived	Set to 1 if the aim is an overdue continuing learning aim (as identified in paragraph 41), otherwise set to 0.
Overdue_Planned_Break	Indicates whether the aim is an overdue planned break.	0 or 1	Derived	Set to 1 if the aim is an overdue planned break (as identified in paragraphs 42 to 47), otherwise set to 0.
P_Ach_Overall	For the overall QAR measure, this indicates whether the programme aim has been achieved.	0 or 1	Derived	Set to 1 if: <ul style="list-style-type: none"> • D_AchieveRateStatus is 1 (Achieved); and • the Learning Actual End Date is not later than 31 July 2018 Otherwise set to 0.

Data item	Description	Data values	Source (ILR)	Derivation
P_Ach_Timely	For the timely QAR measure, this indicates whether the programme aim has been achieved.	0 or 1	Derived	Set to 1 if: <ul style="list-style-type: none"> • D_AchieveRateStatus is 1 (Achieved); • the Learning Planned End Date is not later than 31 July 2018; and • the Learning Actual End Date is on or before the Learning Planned End Date, or no more than 90 days after it; and • the Programme Type is not 25 (Apprenticeship standard) Otherwise set to 0.
P_Actendyr	The actual end year of the programme aim (20__).		Derived	Set to the first calendar year of the funding period the Learning Actual End Date falls in. (For example, if the Learning Actual End Date falls in the 2017 to 2018 funding year, P_Actendyr has the value of 2017)
P_Count_Overall	For the overall QAR measure, this indicates whether the record should be counted towards the overall QAR.	0 or 1	Derived	Set to 1 if: <ul style="list-style-type: none"> • (Learning Actual End Date is present; and the Learning Actual End Date is no later than 31 July 2018); or • Overdue_Continuing_Aim = 1; or • Overdue_Planned_Break = 1 Otherwise set to 0.
P_Count_Timely	For the timely QAR measure, this indicates whether the record should be counted towards the timely QAR.	0 or 1	Derived	Set to 1 if: <ul style="list-style-type: none"> • the Learning Planned End Date is no later than 31 July 2018; and • the Programme Type is not 25 (Apprenticeship standard) Otherwise set to 0.
P_Expendyr	The expected end year of the programme aim (20__).		Derived	Set to the value of the first calendar year of the funding period the Learning Planned End Date falls in. (For example, if the Learning Planned End Date falls in the 2017 to 2018 funding year, P_Expendyr has the value of 2017)

Data item	Description	Data values	Source (ILR)	Derivation
P_Hybridendyr	The hybrid end year of the programme aim (20__).		Derived	Set to: <ul style="list-style-type: none"> the actual learning end year (P_Actendyr); or the expected learning end year (P_Expendyr); the reporting year whichever is higher.
P_Startyr	The start year of the programme aim (20__).		Derived	Set to the value of the first calendar year of the funding period the Learning Start Date falls in. (For example, if the Learning Start Date falls in the 2017 to 2018 funding year, P_Startyr is set to 2017)
PathwayCode	The pathway of the apprenticeship framework being undertaken.		ILR standard files	Set to Apprenticeship Pathway .
PathwayName	The pathway name on the final matched record.		Derived	Set to PathwayName from the framework lookup.
Pilot_Excl	Apprenticeship seasonal worker pilot learning aims are not included in QARs.	0 or 1	Derived	Set to 1 if and there is a Learning Delivery Funding and Monitoring Type of 'LDM' with a Learning Delivery Funding and Monitoring Code of 348 (Apprenticeship seasonal worker pilot).
Plan_Break_Overall_Excl	For the overall QAR measure, this indicates that the apprentice is on a planned break. Planned break aims are not included in QAR.	0 or 1	Derived	Set to 1 if: <ul style="list-style-type: none"> D_AchieveRateStatus is 11 or 12; Overdue_Plan_Break = 0; and the Learning Actual End Date is no later than 31 July 2018 Otherwise set to 0.
Plan_Break_Timely_Excl	For the timely QAR measure, this indicates whether the apprentice is on a planned break. Planned break aims are not included in QAR.	0 or 1	Derived	Set to 1 if: <ul style="list-style-type: none"> D_AchieveRateStatus is 11 or 12; the Learning Planned End Date is not later than 31 July 2018; and the Learning Actual End Date is on or before the Learning Planned End Date, or no more than 90 days after it Otherwise set to 0.

Data item	Description	Data values	Source (ILR)	Derivation
PrimaryLLDD	<p>The primary learner disability, learning difficulty or and health problem of the learner.</p> <p>For learners who are continuing from 2014 to 2015, who had both a learning difficulty and a learning disability a provider does not have to identify which is the primary category. When this occurs the PrimaryLLDD field will not be populated.</p>		ILR standard files	<p>For ILR files for 2014 to 2015, the value is taken from either disability (LLDD and Health Problem Code where the LLDD and Health Problem Type is 'DS') or from learning difficulty (LLDD and Health Problem Code where the LLDD and Health Problem Type is 'LD').</p> <p>If disability and learning difficulty both contain a value of 99 (Not provided), set to 99.</p> <p>If disability and learning difficulty both contain a value, and both values are not 99 (Not provided), the field is not populated.</p> <p>If only disability or learning difficulty contains a value set PrimaryLLDD as follows:</p> <p>Set to 1 if disability is 6. Set to 2 if disability is 90. Set to 3 if learning difficulty is 90. Set to 4 if disability is 1. Set to 5 if disability is 2. Set to 6 if disability is 3. Set to 7 if disability is 9. Set to 9 if disability is 7. Set to 10 if learning difficulty is 1. Set to 11 if learning difficulty is 2. Set to 12 if learning difficulty is 10. Set to 13 if learning difficulty is 11. Set to 14 if learning difficulty is 20. Set to 15 if disability is 10. Set to 16 if disability is 8. Set to 93 if disability is 4. Set to 94 if learning difficulty is 19. Set to 95 if disability is 5. Set to 96 if learning difficulty is 97. Set to 97 if disability is 97. Set to 99 if disability or learning difficulty is 99.</p> <p>For ILR files for 2015 to 2016 onwards set to LLDDCat where PrimaryLLDD is 1.</p>
PriorAttain	The learner's prior attainment level.		ILR standard files	Set to Prior Attainment .

Data item	Description	Data values	Source (ILR)	Derivation
ProgType	The programme type.		ILR standard files	Set to Programme Type .
Prv_Type	The type of provider.		ILR 2017 to 2018 provider details file	Obtained from the ILR 2017 to 2018 provider details file.
QAR_Status_Overall	Indicates whether or not the record is included in the provider's overall QAR calculations.	QAR Inclusions QAR Exclusions	Derived	Set to 'QAR Exclusions' if the aim is not included in overall QAR calculations. Otherwise set to 'QAR Inclusions'. For most excluded aims, a specific exclusion flag will also be set.
QAR_Status_Timely	Indicates whether or not the record is included in the provider's timely QAR calculations.	QAR Inclusions QAR Exclusions	Derived	Set to 'QAR Exclusions' if the aim is not included in timely QAR calculations. Otherwise set to 'QAR Inclusions'. For most excluded aims, a specific exclusion flag will also be set.
SectorSubjectAreaTier1	Sector subject area – the broad (tier 1) classification of the subject of the programme aim.		Derived	Set to SectorSubjectAreaTier1 from the framework or standard lookup.
SectorSubjectAreaTier2	The more specialised classification (tier 2) of the subject of the programme aim.		Derived	Set to SectorSubjectAreaTier2 from the framework or standard lookup.
Sex	The apprentice's sex.		ILR standard files	Set to Sex .
StdCode	Standard code.		ILR standard files	Set to Standard Code .
StdName	Standard name.		Derived	Set to StdName from the Standard lookup.
Subcontractor_Name	The subcontractor's name.		ILR 2017 to 2018 provider details file	The name of the subcontracting provider, from the ILR 2017 to 2018 provider details file.

Data item	Description	Data values	Source (ILR)	Derivation
Subcontractor_UKPRN	The UKPRN of the partner provider that delivered the main assessment aim or competency aim of an apprenticeship.		Derived	<p>Set to the Subcontracted or Partnership UKPRN of the competency learning aim of the apprenticeship. The competency learning aims is identified from the LARS Framework Aims table.</p> <p>The component aims of an apprenticeship programme are those where:</p> <ul style="list-style-type: none"> • Aim Type is 3 (Component learning aim within a programme); • UKPRN is the same as the UKPRN of the programme aim; • Learner Reference Number is the same as the Learner Reference Number of the programme aim; • Framework Code is the same as the Framework Code of the programme aim; • Programme Type is the same as the Programme Type of the programme aim; and • Learning Start Date is the same as the Learning Start Date of the programme aim <p>Each component aim of the apprenticeship is checked against the LARS Framework Aims table. The component learning aim is the competency aim where:</p> <ul style="list-style-type: none"> • Learning Aim Reference is the same as LearnAimRef on the LARS Framework Aims table; • Framework Code is the same as FworkCode on the LARS Framework Aims table; • Programme Type is the same as ProgType on the LARS Framework Aims table; • Apprenticeship Pathway is the same as PwayCode on the LARS Framework Aims table; and • FrameworkComponentType on the LARS Framework Aims table is 1
SWSupAimID	The software supplier's aim identifier of the aim.		ILR standard files	For ILR files for 2014 to 2015 onwards set to SWSupAimID .

Data item	Description	Data values	Source (ILR)	Derivation
Transfer_Overall_Excl	For the overall QAR measure, this indicates that the apprentice has transferred to another programme within the same provider. Transfer aims are not included in QAR.	0 or 1	Derived	Set to 1 if: <ul style="list-style-type: none"> (D_AchieveRateStatus is 8 and a later programme record exists with a Learning Start Date no more than 120 days after the Learning Actual End Date of the programme with D_AchieveRateStatus = 8 and matching ULN and UKPRN), or (D_AchieveRateStatus is 10 and Withdrawal Reason is not 41)); and the Learning Actual End Date is no later than 31 July 2018 Otherwise set to 0.
Transfer_Timely_Excl	For the timely QAR measure, this indicates that the apprentice has transferred to another programme within the same provider. Transfer aims are not included in QAR.	0 or 1	Derived	Set to 1 if: <ul style="list-style-type: none"> (D_AchieveRateStatus is 8 and a later programme record exists with a Learning Start Date no more than 120 days after the Learning Actual End Date of the programme with D_AchieveRateStatus = 8 and matching ULN and UKPRN), or (D_AchieveRateStatus is 10 and Withdrawal Reason is not 41)); and the Learning Planned End Date is no later than 31 July 2018; and the Learning Actual End Date is on or before the Learning Planned End Date, or no more than 90 days after it Otherwise set to 0.
UKPRN	The UK provider reference number (UKPRN).		ILR standard files	Set to UK Provider Reference Number .
UKPRN_orig	The UKPRN of the programme aim before the college merger process was applied to a provider's data.		Derived	See paragraphs 26 to 28 for information on setting this field.
ULN	Unique learner number.		ILR standard files	Set to Unique Learner Number .

Data item	Description	Data values	Source (ILR)	Derivation
WithdrawalReason	The reason learning ended.		ILR standard files	Set to Withdrawal Reason .
Year	The current funding year for the QARs dataset.	2017/18	Derived	Set to '2017/18'.
YearAimSubmitted	The funding year which the aim was submitted in.		Derived	Set to '2013/14' if the learning aim is taken from the 2013 to 2014 ILR; '2014/15' if from the 2014 to 2015 ILR; '2015/16' if from the 2015 to 2016 ILR; '2016/17' if from the 2016 to 2017 ILR or '2017/18' if from the 2017 to 2018 ILR.

Contents of the qualification achievement rates dataset for records created from the LEOP dataset

Source or derivation of fields in the qualification achievement rates dataset

63. The reference files used in some of the derivations are as follows.

- a) The 2017/2018 Framework lookup file – this file holds programme aim information from the Learning Aims Reference System (LARS) as at the hard close of the 2017 to 2018 ILR (18 October 2018).
- b) The 2017/2018 Provider Details file – this file holds providers' details from the Provider and Organisation Information Management System (PIMS), as at 31 July 2018.
- c) The look-up used to determine the delivery region and delivery local authority of a delivery location postcode is obtained from the National Statistics Postcode Lookup (UK) May 2018. This will be available to download from the Office of National Statistics website.

Data item	Description	Data values	Source (LEOP)	Derivation
Age_Band	A banding of the apprentice's age at the start of the apprenticeship programme.	1 = 16 to 18 2 = 19 to 23 3 = 24 or more	Derived	Set to 1 if D_AgeAimStart is 0 to 18. Set to 2 if D_AgeAimStart is 19 to 23. Set to 3 if D_AgeAimStart or 24 or greater.
App_Stand_NoNetPay_Excl	Indicates that the learner on a trailblazer pilot standard has withdrawn without a net employer contribution payment being recorded.	0 or 1	Derived	Set to 0.
ClassLearn_Excl	Indicates that the learning aim is a classroom learning aim reported through the employer responsive funding stream. Classroom learning aims reported through the employer responsive funding stream are not included in QARs.	0	Derived	Set to 0.
CompStatus	The completion status of the programme aim.		LEOP standard files	Set to Completion Status .

Data item	Description	Data values	Source (LEOP)	Derivation
D_AchieveRateStatus	The status of the learning aim for calculating QARs.		ILR standard files / Derived	<p>Set the value as follows.</p> <ul style="list-style-type: none"> set to 0 (Continuing) if the Learning Actual End Date is not populated set to 1 (Achieved) if the Learning Actual End Date is populated and the Outcome is 1 (Achieved) set to 11 (Apprentice is taking a planned break from learning) if the Completion Status is 6 (Learner has temporarily withdrawn from the aim due to an agreed break in learning) <p>If none of the conditions above apply, set to 6 (Not achieved).</p> <p>(As the LEOP dataset does not include a 'Reason Learning Ended' or a 'Withdrawal Reason', D_AchieveRateStatus values of 8 (Transfer to a new aim at the same provider), 9 (Transfer to new provider) and 10 (Transfer to a new provider forced by ESFA intervention) cannot be determined.)</p>
D_AgeAimStart	The age of the apprentice on the start date of the programme aim.		LEOP standard files	Set to D_AgeAimStart .
Datasource	The source of the record on the QARs dataset, which is either the ILR or the LEOP dataset.	LEOP	Derived	Set to LEOP.
DelLocPostCode	The postcode of the delivery location.		LEOP standard files	Set to Delivery Location Postcode .
DelLocPostCode_GOR	The delivery location postcode Government office region.		Postcode lookup	Obtained from the National Statistics Postcode Lookup (UK) May 2018.
DelLocPostCode_LocalAuthority	The delivery location postcode local authority.		Postcode lookup	Obtained from the National Statistics Postcode Lookup (UK) May 2018.
EOP_Excl	Indicates that the programme aim is former EOP provision.	0	Derived	Set to 0.
Ethnicity	The apprentice's ethnic background.		LEOP standard files	Set to Ethnicity .

Data item	Description	Data values	Source (LEOP)	Derivation
FreeMeals	Indicates that the learner is eligible for free meals, or is eligible and receiving free meals. 19+ learners are not eligible for free meals.		Derived	Set to 0.
Fund_Qual_Excl	Indicates that the learner has withdrawn from a learning aim before the qualifying number of days for funding has been met. (The qualifying period for funding aims with a planned duration of less than 14 days is 1 day. Fund_Qual_Excl is always set to 0 for aims with a planned duration of less than 14 days)	0	Derived	Set to 0.
FworkCode	Framework code.		LEOP standard files.	Set to Framework Code .
FworkName	Framework name.		Derived	Set to FworkName from the framework lookup.
L_PriorPcode	The apprentice's home postcode.		LEOP standard files	Set to Learner Home Postcode .
L_PriorPcode_GOR	The apprentice's home postcode Government office region.		Postcode lookup	Obtained from the National Statistics Postcode Lookup (UK) May 2018.
L_PriorPcode_LocalAuthority	The apprentice's home postcode local authority.		Postcode lookup	Obtained from the National Statistics Postcode Lookup (UK) May 2018.
LearnActEndDate	The learning actual end date (DDMMYYYY).		LEOP standard files	Set to Learning Actual End Date .
LearnAimBelowMS	Indicates whether the learning aim is classified as being below the minimum standards threshold.	0 or 1	Derived	See paragraphs 54 and 60 for details of how the classification below minimum standards is derived. Set to 1 if the programme aim is classified as being below minimum standards. Otherwise set to 0.
LearnPlanEndDate	The learning planned end date (DDMMYYYY).		LEOP standard files	Set to Learning Planned End Date .
LearnRefNumber	The learner reference number.		LEOP standard file	Set to Learner Reference Number .

Data item	Description	Data values	Source (LEOP)	Derivation
LearnStartDate	The learning start date (DDMMYYYY).		LEOP standard files	Set to Learning Start Date .
LLDDHealthProb	Indicates whether the apprentice considers that they have a learning difficulty, disability or health problem.		LEOP standard files	Set to LLDD and Health Problem Indicator .
Outcome	The learning outcome of the programme aim.		LEOP standard files	Set to Outcome .
Overdue_Continuing_Aim	Indicates whether the aim is an overdue continuing aim.	Not populated	–	–
Overdue_Planned_Break	Indicates whether the aim is an overdue planned break.	Not populated	–	–
P_Ach_Overall	For the overall QAR measure, this indicates whether the apprentice has achieved the apprenticeship.	0 or 1	Derived	Set to 1 if: <ul style="list-style-type: none"> • D_AchieveRateStatus is 1 (Achieved); and • the Learning Actual End Date is not later than 31 July 2018 Otherwise set to 0.
P_Ach_Timely	For the timely QAR measure, this indicates whether the apprentice has achieved the apprenticeship.	0 or 1	Derived	Set to 1 if; <ul style="list-style-type: none"> • D_AchieveRateStatus is 1 (Achieved); • the Learning Planned End Date is not later than 31 July 2018; and • the Learning Actual End Date is on or before the Learning Planned End Date, or no more than 90 days after it Otherwise set to 0.
P_Actendyr	The actual end year of the programme aim (20_).		Derived	Set to the first calendar year of the funding period the Learning Actual End Date falls in. For example, if the Learning Actual End Date falls in the 2017 to 2018 funding year, P_Actendyr has the value of 2017.

Data item	Description	Data values	Source (LEOP)	Derivation
P_Count_Overall	For the overall QAR measure, this indicates whether the record should be counted towards the overall QAR.	0 or 1	Derived	Set to 1 if: <ul style="list-style-type: none"> • Learning Actual End Date is populated; and • the Learning Actual End Date is no later than 31 July 2018 Otherwise set to 0.
P_Count_Timely	For the timely QAR measure, this indicates whether the record should be counted towards the timely QAR.	0 or 1	Derived	Set to 1 if: <ul style="list-style-type: none"> • the Learning Planned End Date is no later than 31 July 2018 Otherwise set to 0.
P_Expendyr	The expected end year of the programme aim (20_ _).		Derived	Set to the value of the first calendar year of the funding period the Learning Planned End Date falls in. For example, if the Learning Planned End Date falls in the 2017 to 2018 funding year, P_Expendyr has the value of 2017.
P_Hybridendyr	The hybrid end year of the programme aim (20_ _).		Derived	Set to: <ul style="list-style-type: none"> • the actual learning end year (P_Actendyr); or • the expected learning end year (P_Expendyr) whichever is higher.
P_Startyr	The start year of the programme aim (20_ _).		Derived	Set to the value of the first calendar year of the funding period the Learning Start Date falls in. For example, if the Learning Start Date falls in the funding year 2017 to 2018, P_Startyr is set to 2017.
PathwayCode	The pathway of the apprenticeship being undertaken.	Not populated	–	–
PathwayName	The pathway name	Not populated	–	–
Pilot_Excl	Apprenticeship seasonal worker pilot learning aims are not included in QARs.	0 or 1	Derived	Set to 1 if and there is a Learning Delivery Funding and Monitoring Type of 'LDM' with a Learning Delivery Funding and Monitoring Code of 348 (Apprenticeship seasonal worker pilot).

Data item	Description	Data values	Source (LEOP)	Derivation
Plan_Break_Overall_Excl	For the overall QAR measure, this indicates that the apprentice is on a planned break. Planned break aims are not included in QAR.	0 or 1	Derived	Set to 1 if: <ul style="list-style-type: none"> • D_AchieveRateStatus is 11; and • the Learning Actual End Date is no later than 31 July 2018 Otherwise set to 0.
Plan_Break_Timely_Excl	For the timely QAR measure, this indicates whether the apprentice is on a planned break. Planned break aims are not included in QAR.	0 or 1	Derived	Set to 1 if: <ul style="list-style-type: none"> • D_AchieveRateStatus is 11; • the Learning Planned End Date is not later than 31 July 2018; and • the Learning Actual End Date is on or before the Learning Planned End Date, or no more than 90 days after it Otherwise set to 0.
PrimaryLLDD	The primary learner disability, learning difficulty or and heath problem of the learner.	Not populated	–	–
PriorAttain	The learner's prior attainment level.	Not populated	–	–
ProgType	The type of programme.		LEOP standard files	Set to Programme Type .
Prv_Type	The type of provider.		ILR 2017 to 2018 provider details file	Obtained from the ILR 2017 to 2018 provider details file.
QAR_Status_Overall	Indicates whether or not the record is included in the provider's overall QAR calculations.	QAR Inclusions QAR Exclusions	Derived	Set to 'QAR Exclusions' if the aim is not included in overall QAR calculations. Otherwise set to 'QAR Inclusions'. For most excluded aims, a specific exclusion flag will also be set.
QAR_Status_Timely	Indicates whether or not the record is included in the provider's timely QAR calculations.	QAR Inclusions QAR Exclusions	Derived	Set to 'QAR Exclusions' if the aim is not included in timely QAR calculations. Otherwise set to 'QAR Inclusions'. For most excluded aims, a specific exclusion flag will also be set.

Data item	Description	Data values	Source (LEOP)	Derivation
SecSubjAreaTier1	Sector subject area – the broad (tier 1) classification of the subject of the programme aim.		Derived	Set to SecSubjAreaTier1 from the framework lookup.
SecSubjAreaTier2	The more specialised classification (tier 2) of the subject of the programme aim.		Derived	Set to SecSubjAreaTier2 from the framework lookup.
Sex	The apprentice's sex.		LEOP standard files	Set to Gender .
Subcontractor_Name	The subcontractor's name.	Not populated	–	–
Subcontractor_UKPRN	The UKPRN of the partner provider that delivered the main assessment aim or competency aim of an apprenticeship.	Not populated	–	–
SWSupAimID	The software supplier's aim identifier of the aim.	Not populated	–	–
Transfer_Overall_Excl	For the overall QAR measure, this indicates that the apprentice has transferred to another programme within the same provider. Transfer aims are not included in QAR.	0 or 1	Derived	Set to 1 if: <ul style="list-style-type: none"> • D_AchieveRateStatus is 8; and • the Learning Actual End Date is no later than 31 July 2018 Otherwise set to 0.
Transfer_Timely_Excl	For the timely QAR measure, this indicates that the apprentice has transferred to another programme within the same provider. Transfer aims are not included in QAR.	0 or 1	Derived	Set to 1 if: <ul style="list-style-type: none"> • D_AchieveRateStatus is 8; and • the Learning Planned End Date is no later than 31 July 2018; and • the Learning Actual End Date is on or before the Learning Planned End Date, or no more than 90 days after it Otherwise set to 0.
UKPRN	UK provider reference number (UKPRN).		LEOP standard files	Set to UKPRN .
ULN	Unique learner number (ULN)		LEOP standard files	Set to ULN .
WithdrawalReason	The reason learning ended.	Not populated	–	–

Data item	Description	Data values	Source (LEOP)	Derivation
Year	The current funding year for the QARs dataset.	2016/17	Derived.	Set to '2017/18'.
YearAimSubmitted	The funding year which the aim was submitted in.		Derived	Set to '2013/14' if the learning aim is taken from the 2013 to 2014 LEOP dataset or '2014/15' if from the 2014 to 2015 LEOP dataset.

© Crown copyright 2019

You may re-use this information (excluding logos) free of charge in any format or medium, under the terms of the Open Government Licence.

To view this licence, visit <http://www.nationalarchives.gov.uk/doc/open-government-licence/> or email: psi@nationalarchives.gsi.gov.uk.

Where we have identified any third party copyright information you will need to obtain permission from the copyright holders concerned.

This document is also available from our website gov.uk/esfa.

If you have any enquiries regarding this publication or require an alternative format, please contact us sde.servicedesk@education.gov.uk.