



# PHE Influenza Surveillance graphs

- Influenza activity in the United Kingdom is monitored using a variety of [surveillance systems](#). The [National Influenza Report](#) which interprets the data is published weekly.
- National and subnational outputs from the various surveillance systems are grouped according to the following categories:
  - [Community influenza surveillance](#)
  - [Influenza-like illness GP consultation rates](#)
  - [Influenza-confirmed hospitalisations](#)
  - [All-cause mortality](#)
  - [Microbiological surveillance](#)
  - [Influenza vaccination](#)

Influenza Section

Immunisations and Countermeasures Division

Centre for Infectious Disease Surveillance and Control

Public Health England

[respscidsc@phe.gov.uk](mailto:respscidsc@phe.gov.uk)

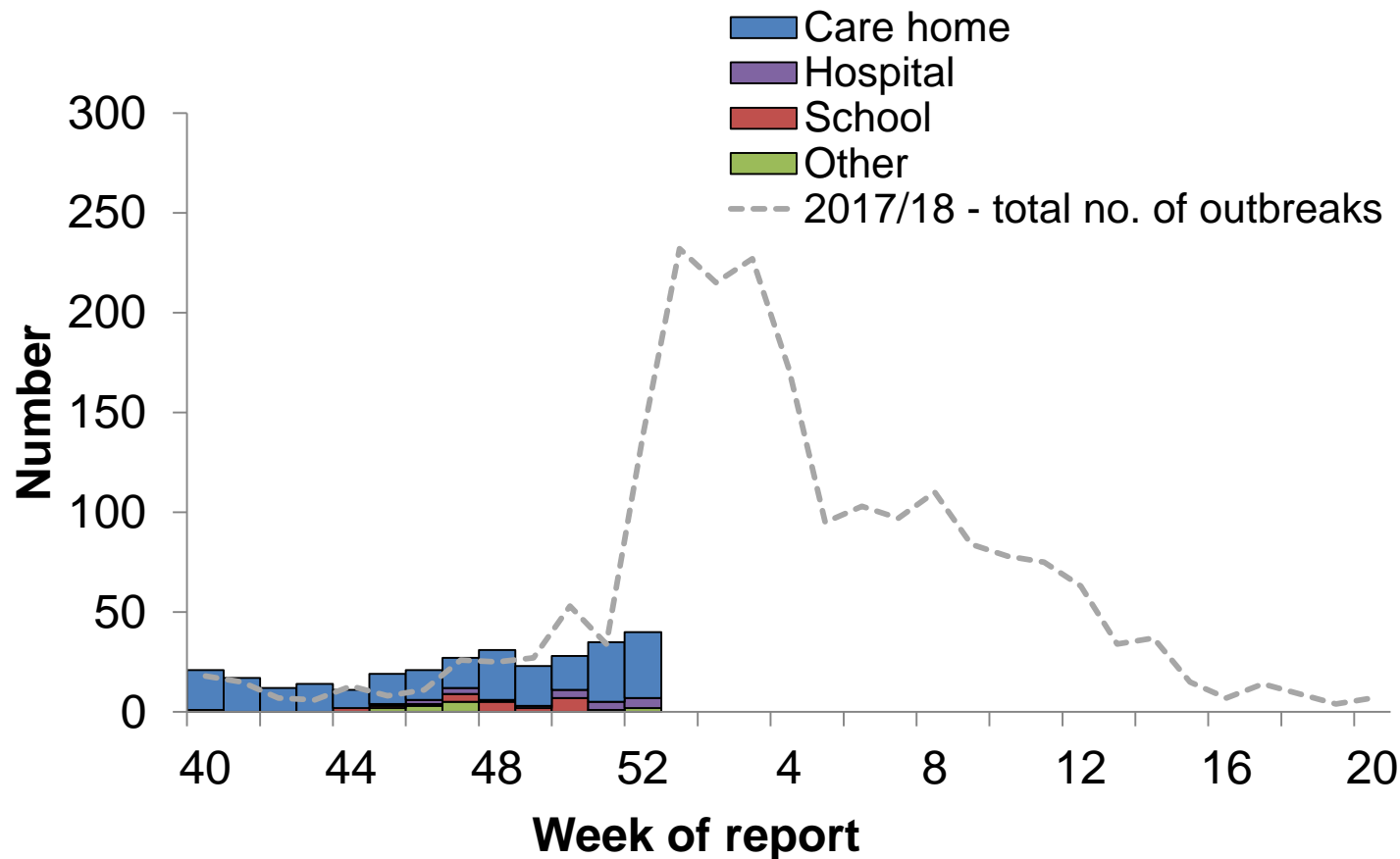


Public Health  
England

# Community influenza surveillance



## Number of acute respiratory outbreaks by institution, UK





## Number of acute respiratory outbreaks by PHE Centre

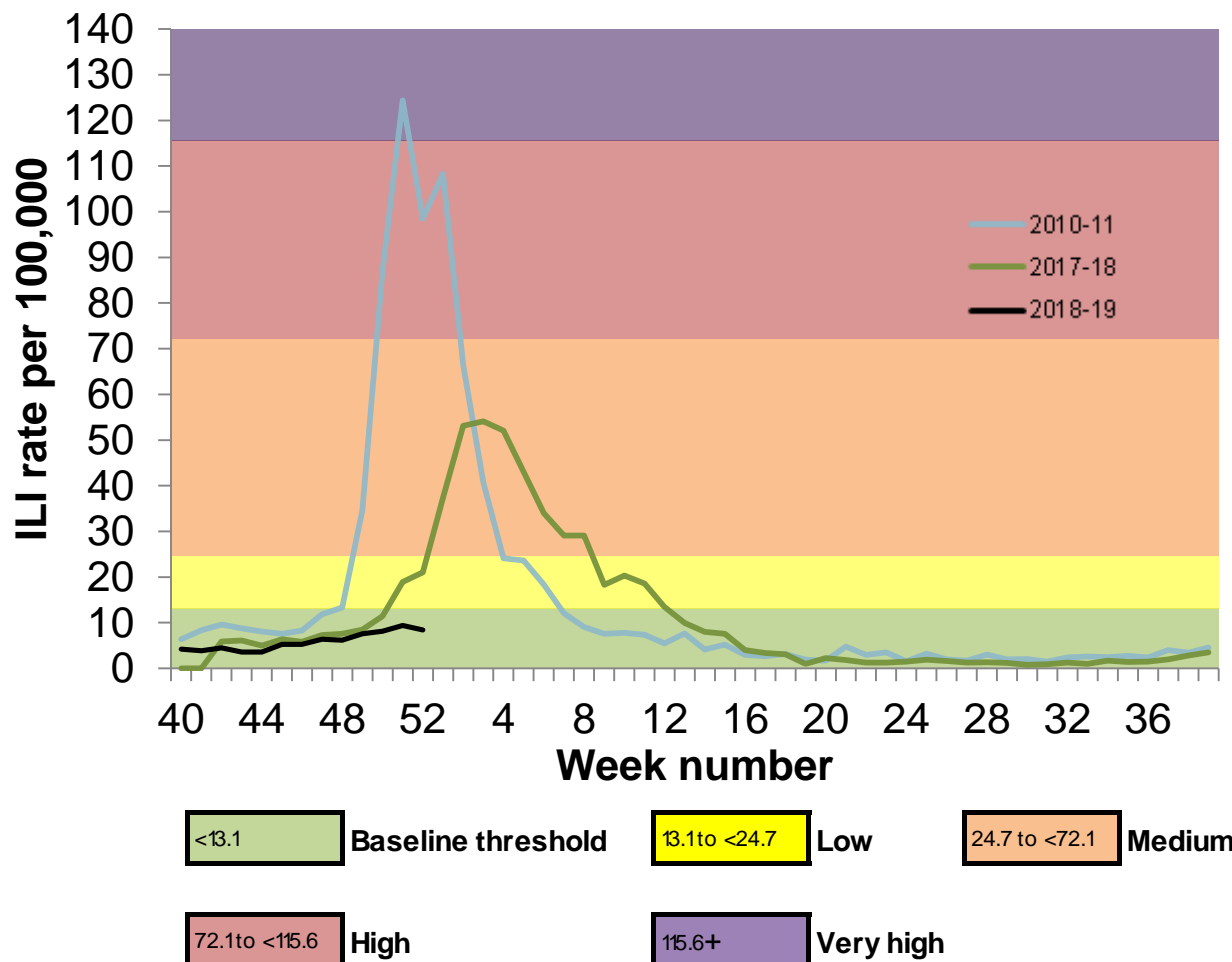
|                          | Outbreaks reported in week 52 | Cumulative number of outbreaks since week 40 |
|--------------------------|-------------------------------|--|
| PHE North East           | 1                             | 7  |
| PHE North West           | 9                             | 59   |
| PHE Yorkshire and Humber | 1                             | 18   |
| PHE East Midlands        | 5                             | 32   |
| PHE West Midlands        | 4                             | 29   |
| PHE East of England      | 7                             | 62   |
| PHE London               | 1                             | 13   |
| PHE South East           | 8                             | 28   |
| PHE South West           | 3                             | 46   |



# Influenza-like illness GP consultation rates



## RCGP ILI consultation rate, England





# GP ILI consultations in the UK for all ages with MEM thresholds applied

| GP ILI<br>consultation<br>rates (all ages) | Week number |     |     |     |     |     |     |     |     |     |     |      |     |   |   |   |   |
|--|-------------|-----|-----|-----|-----|-----|-----|-----|-----|-----|-----|------|-----|---|---|---|---|
|  | 40          | 41  | 42  | 43  | 44  | 45  | 46  | 47  | 48  | 49  | 50  | 51   | 52  | 1 | 2 | 3 | 4 |
| England (RCGP)                             | 4.2         | 3.9 | 4.5 | 3.6 | 3.6 | 5.3 | 5.2 | 6.4 | 6.2 | 7.6 | 8.1 | 9.4  | 8.4 |   |   |   |   |
| Wales                                      | 7.0         | 3.6 | 4.2 | 6.6 | 6.3 | 6.4 | 4.5 | 4.7 | 6.5 | 3.2 | 4.5 | 9.0  | 9.5 |   |   |   |   |
| Scotland                                   | 7.1         | 5.1 | 3.6 | 4.5 | 2.9 | 7.3 | 4.2 | 5.2 | 5.9 | 4.1 | 6.8 | 10.5 | NA  |   |   |   |   |
| Northern Ireland                           | 3.8         | 3.5 | 3.8 | 3.6 | 3.8 | 5.0 | 6.3 | 4.5 | 5.6 | 6.0 | 8.4 | 8.9  | 9.0 |   |   |   |   |

NA refers to data not available for this week

*\*The Moving Epidemic Method (MEM) has been adopted by the European Centre for Disease Prevention and Control to calculate thresholds for GP ILI consultations for the start of influenza activity (based on 10 seasons excluding 2009/10), in a standardised approach across Europe. For MEM threshold values for each country, please visit: <https://www.gov.uk/guidance/sources-of-uk-flu-data-influenza-surveillance-in-the-uk#clinical-surveillance-through-primary-care> .*

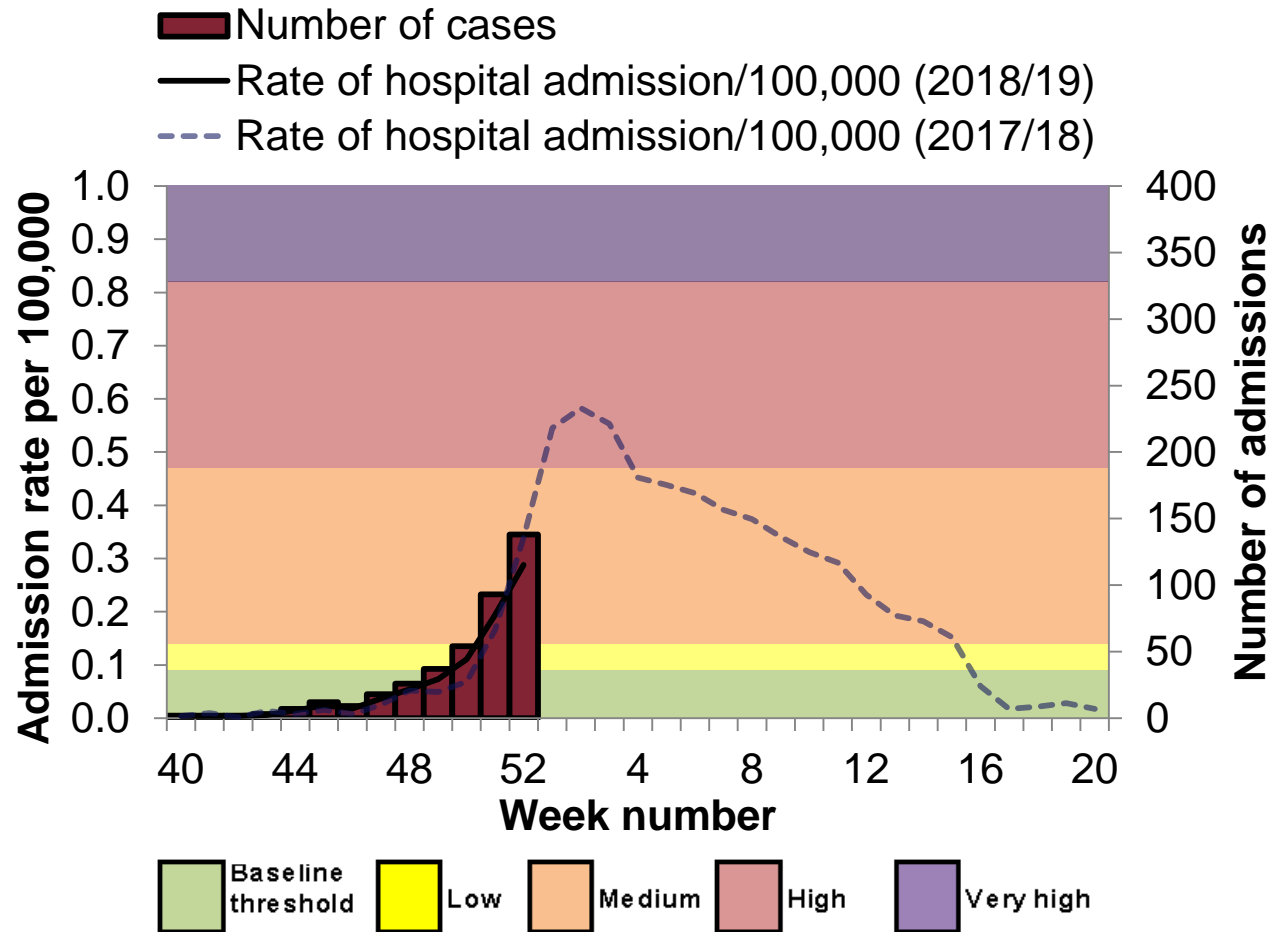


# Influenza-confirmed hospitalisations





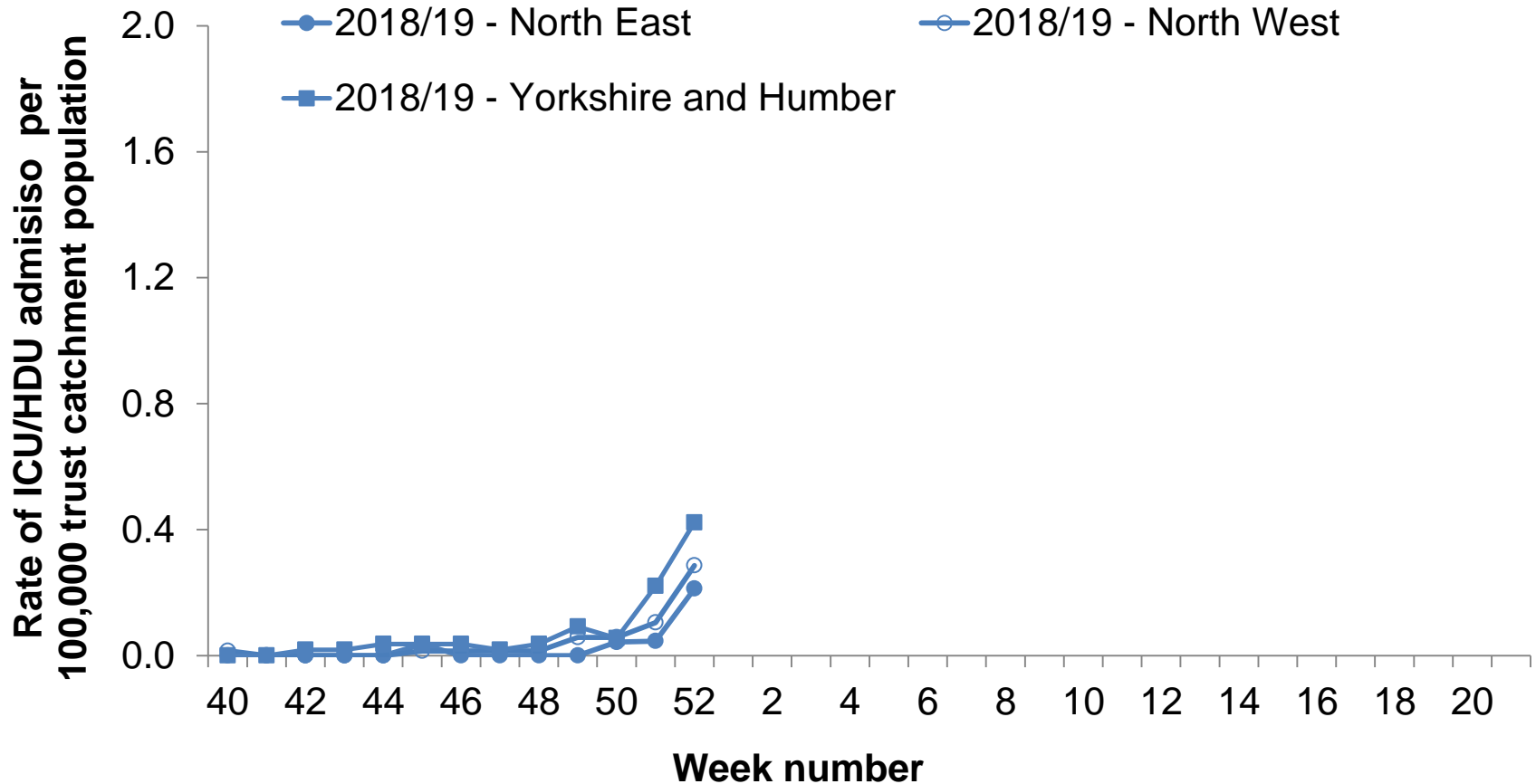
# Weekly ICU/HDU influenza admission rate per 100,000 trust catchment population , England, since week 40 2018



\*The Moving Epidemic Method (MEM) has been adopted by the European Centre for Disease Prevention and Control to calculate thresholds for ICU/HDU admission rates for the start of influenza activity (based on 6 seasons) in a standardised approach across Europe. For MEM threshold values, please visit: <https://www.gov.uk/guidance/sources-of-uk-flu-data-influenza-surveillance-in-the-uk#disease-severity-and-mortality-data>

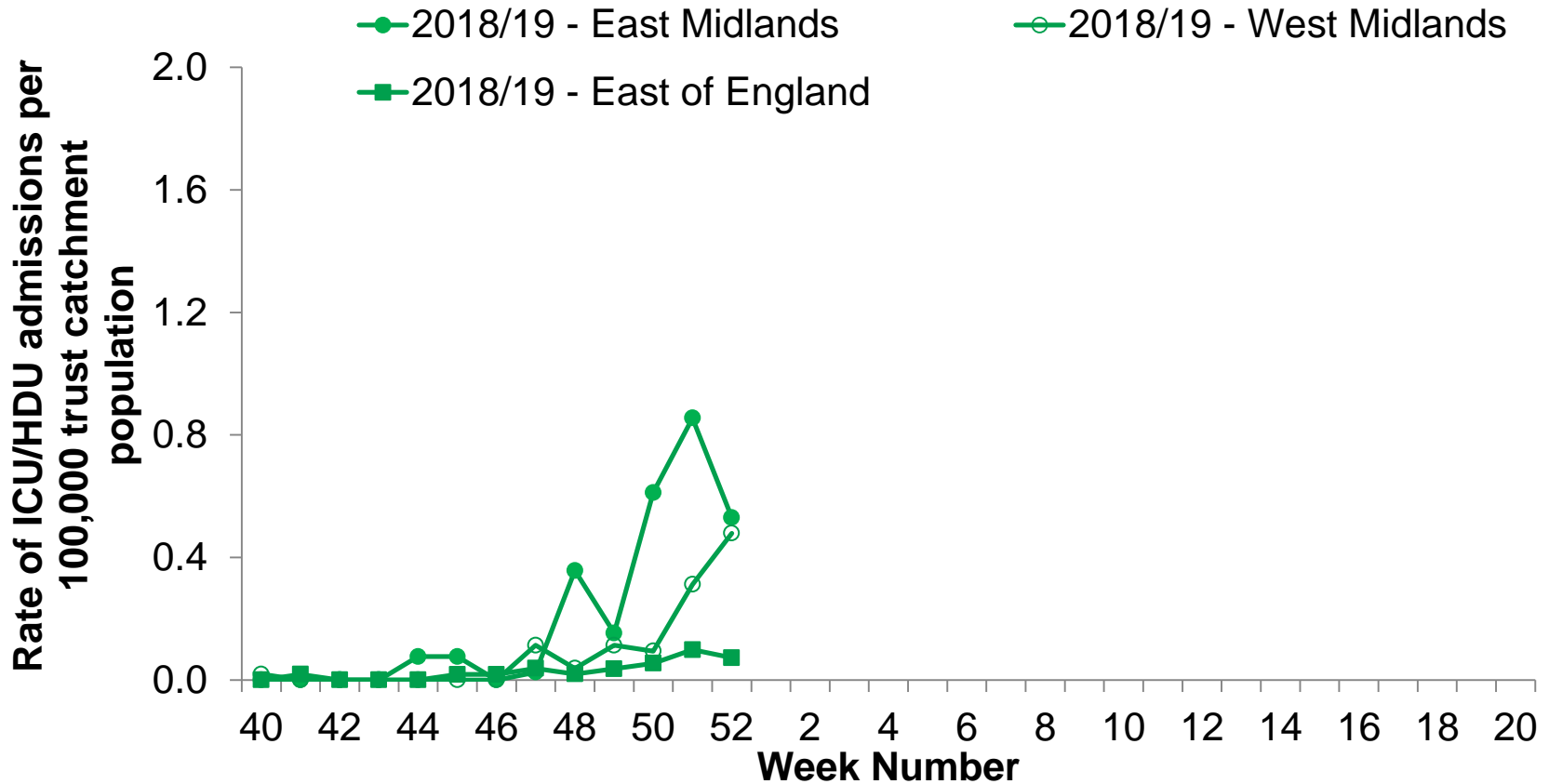


# Weekly ICU/HDU influenza admission rate per 100,000 trust catchment population by PHE Centre, North East, North West and Yorkshire and Humber, since week 40 2018



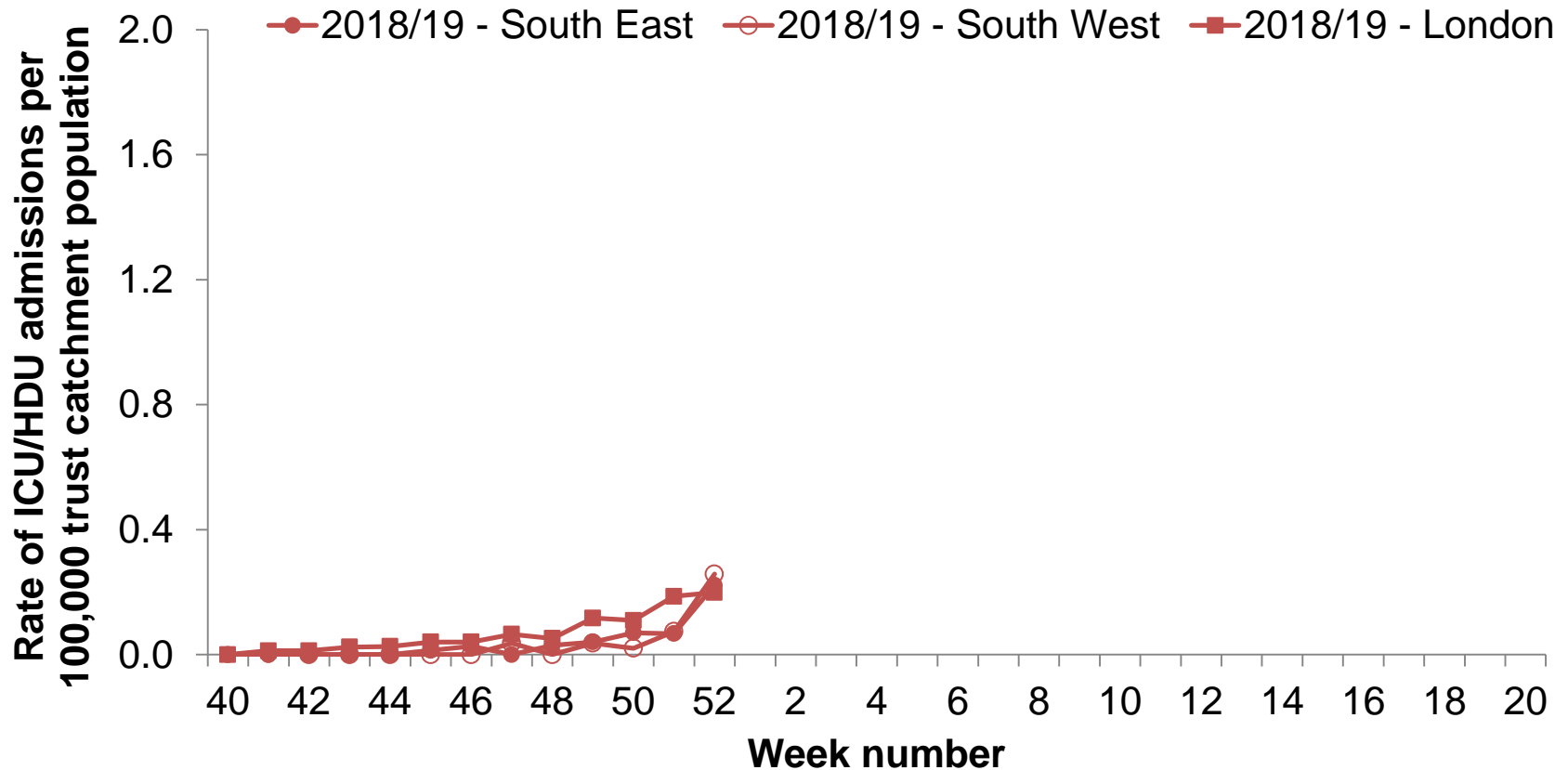


# Weekly ICU/HDU influenza admission rate per 100,000 trust catchment population by PHE Centre, East Midlands, West Midlands and East of England since week 40 2018



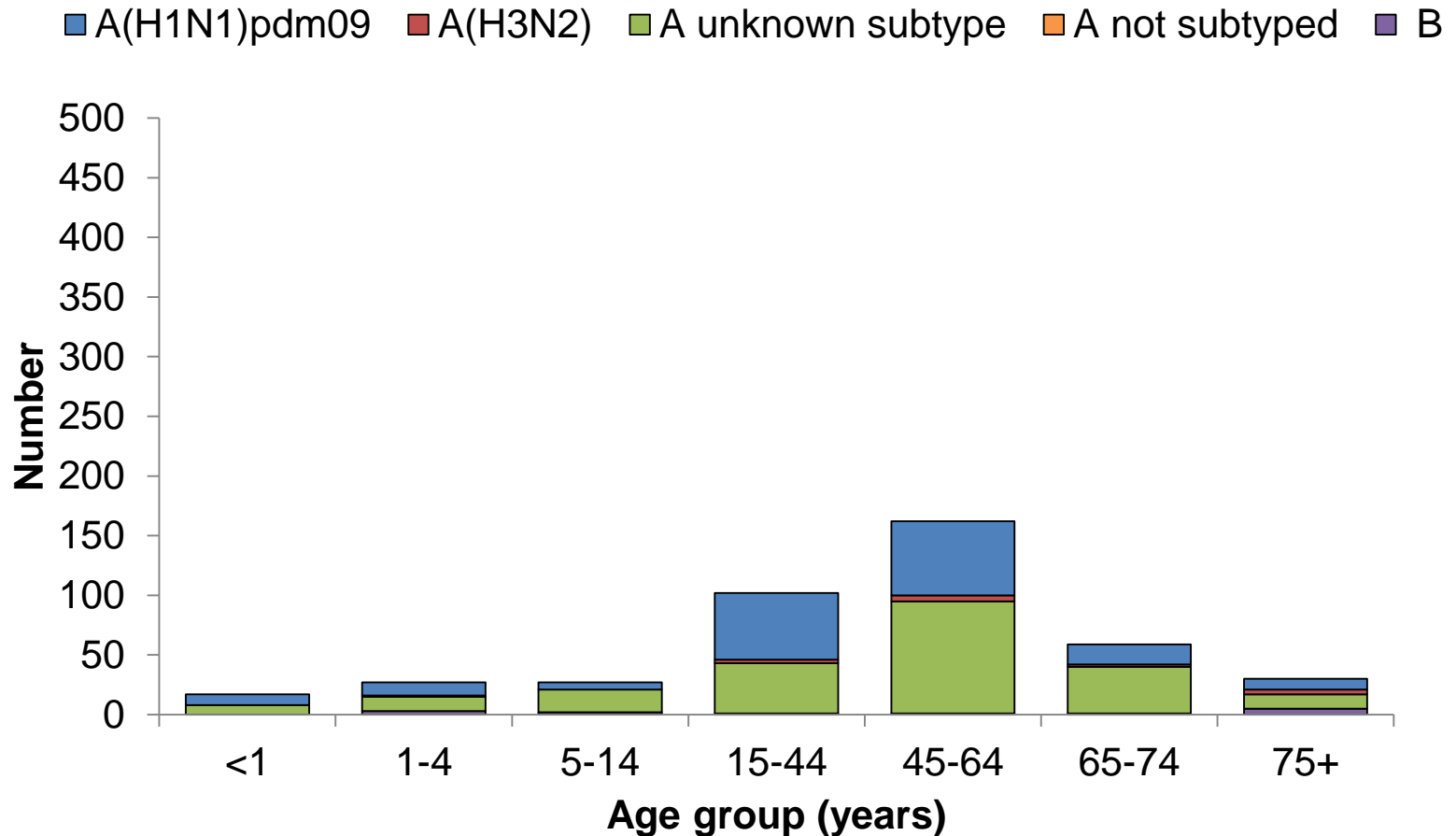


# Weekly ICU/HDU influenza admission rate per 100,000 trust catchment population by PHE Centre, South East, South West and London, since week 40 2018



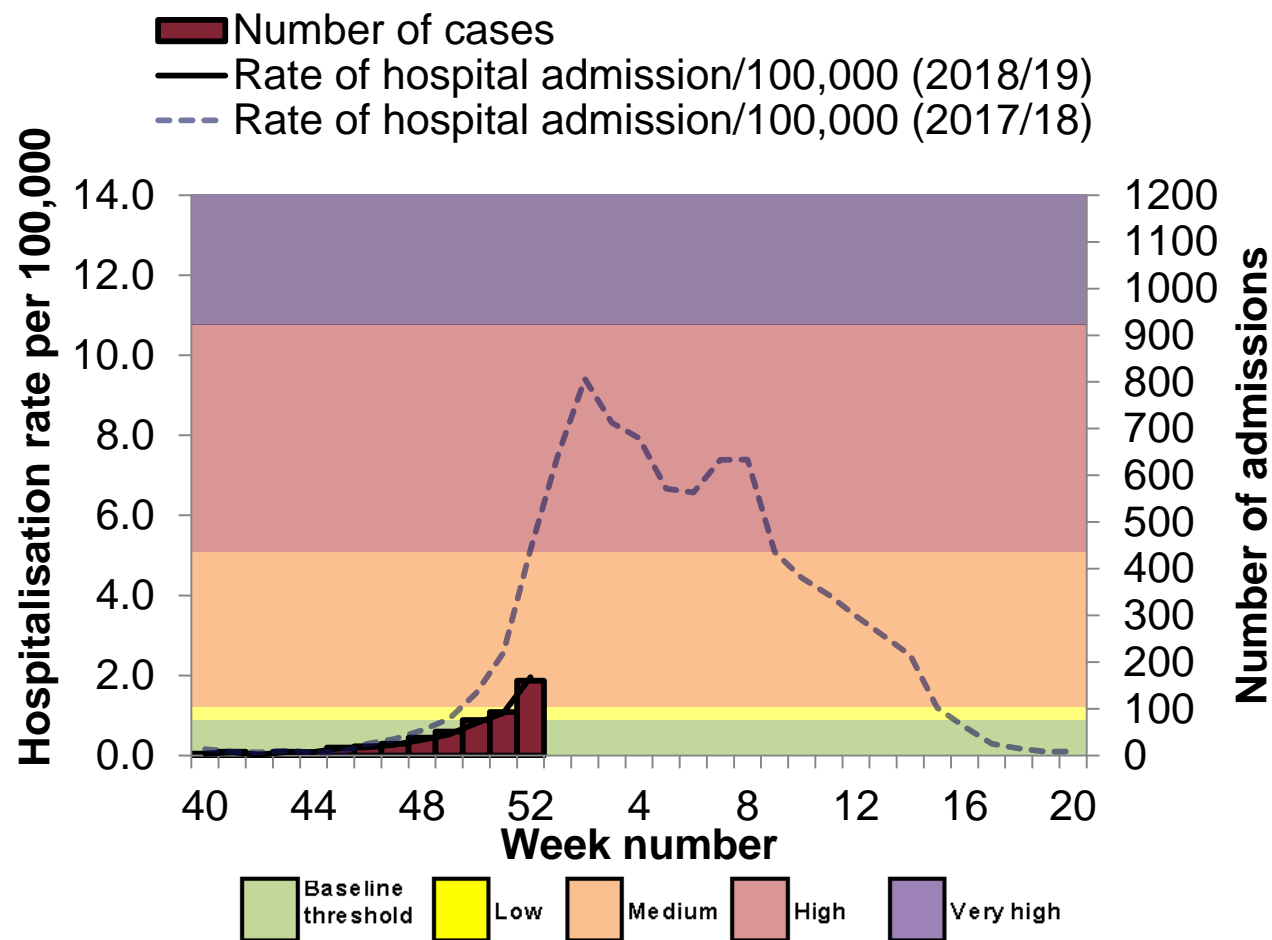


## Influenza confirmed ICU admissions (USISS mandatory) by age and influenza subtype, since week 40 2018





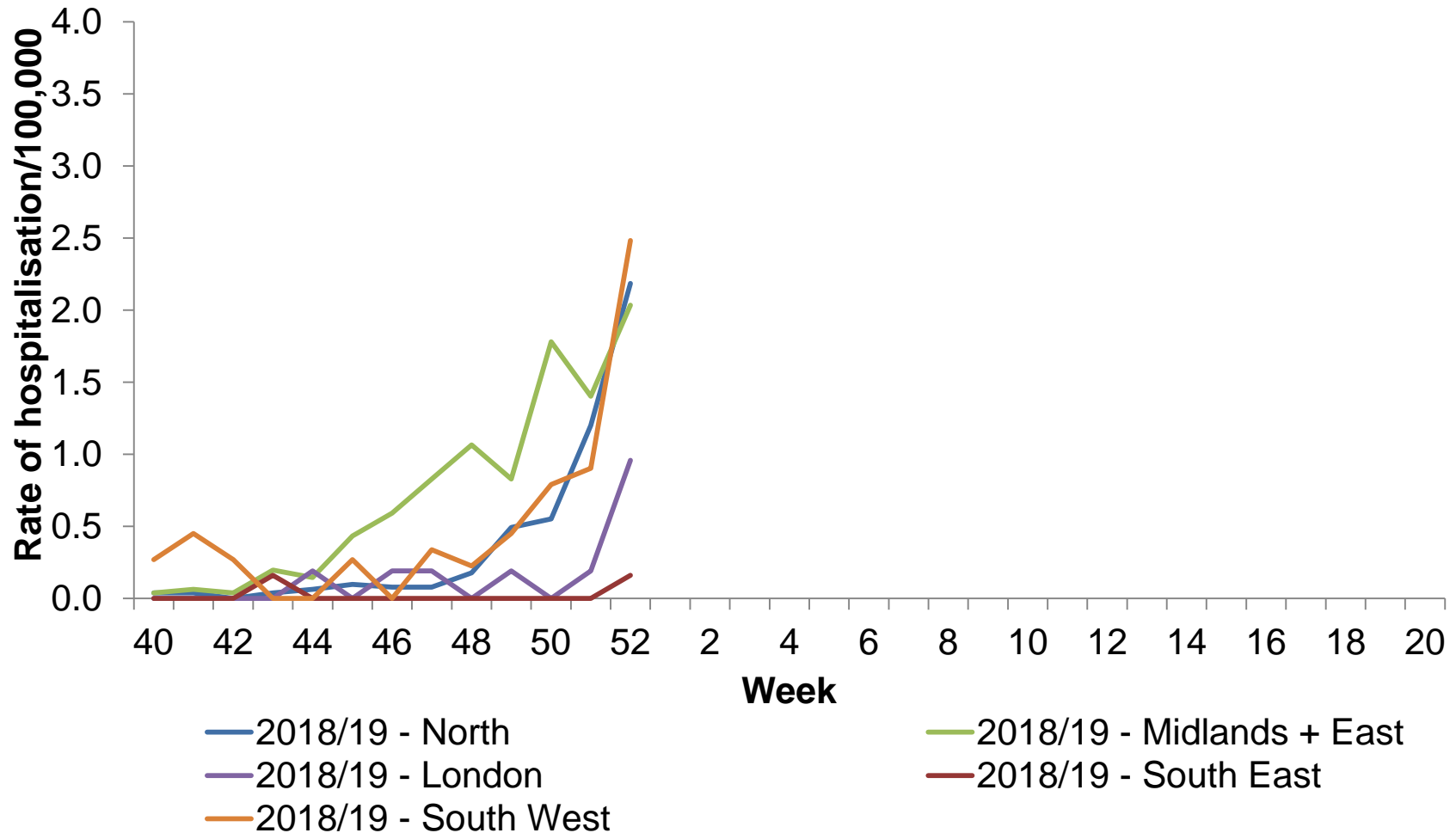
## Weekly hospitalised influenza case rate per 100,000 trust catchment population , England, since week 40 2018



\*The Moving Epidemic Method (MEM) has been adopted by the European Centre for Disease Prevention and Control to calculate thresholds for ICU/HDU admission rates for the start of influenza activity (based on 6 seasons) in a standardised approach across Europe. For MEM threshold values, please visit: <https://www.gov.uk/guidance/sources-of-uk-flu-data-influenza-surveillance-in-the-uk#disease-severity-and-mortality-data>

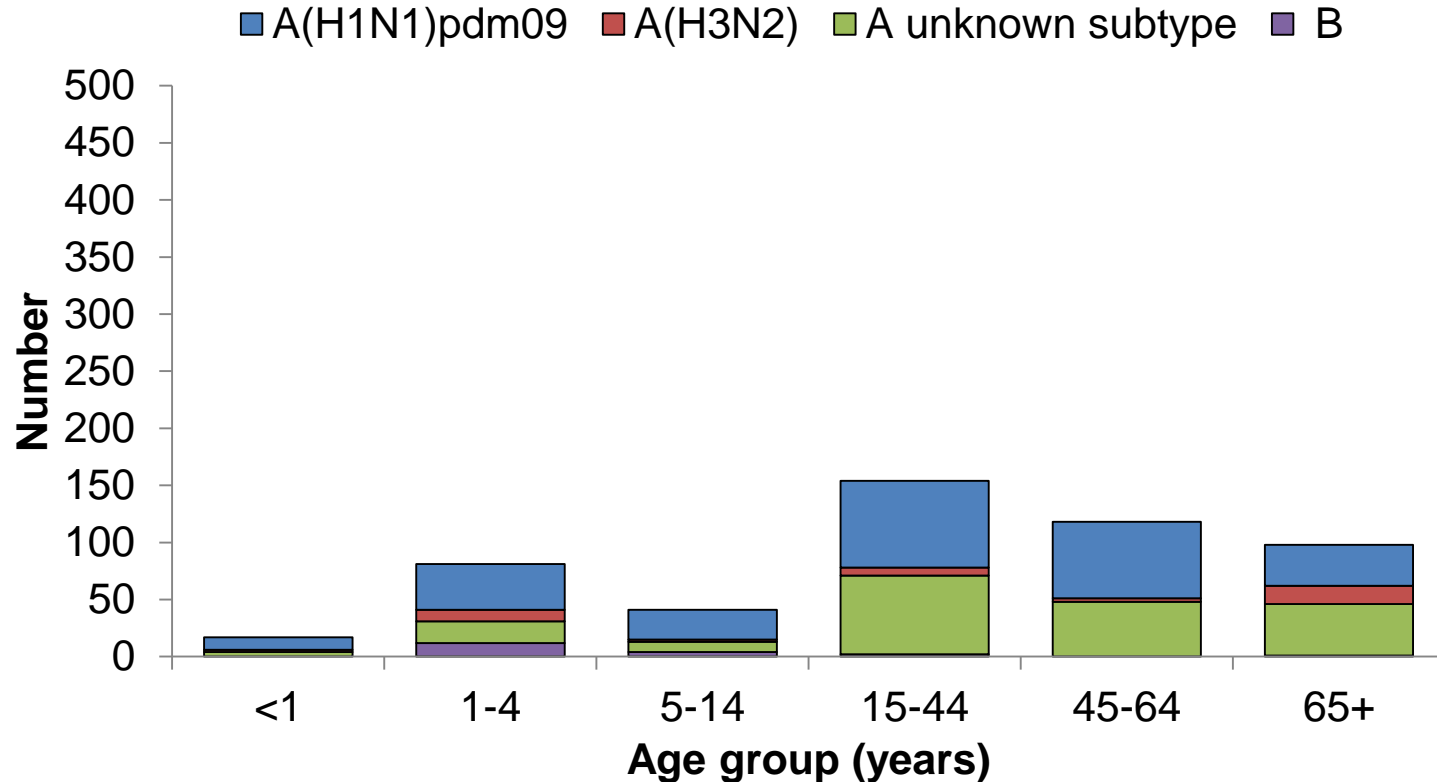


## Weekly hospitalised influenza admission rate per 100,000 trust catchment population by PHE region, since week 40 2018





## Influenza confirmed hospital admissions (USISS sentinel) by age and influenza subtype, since week 40 2018



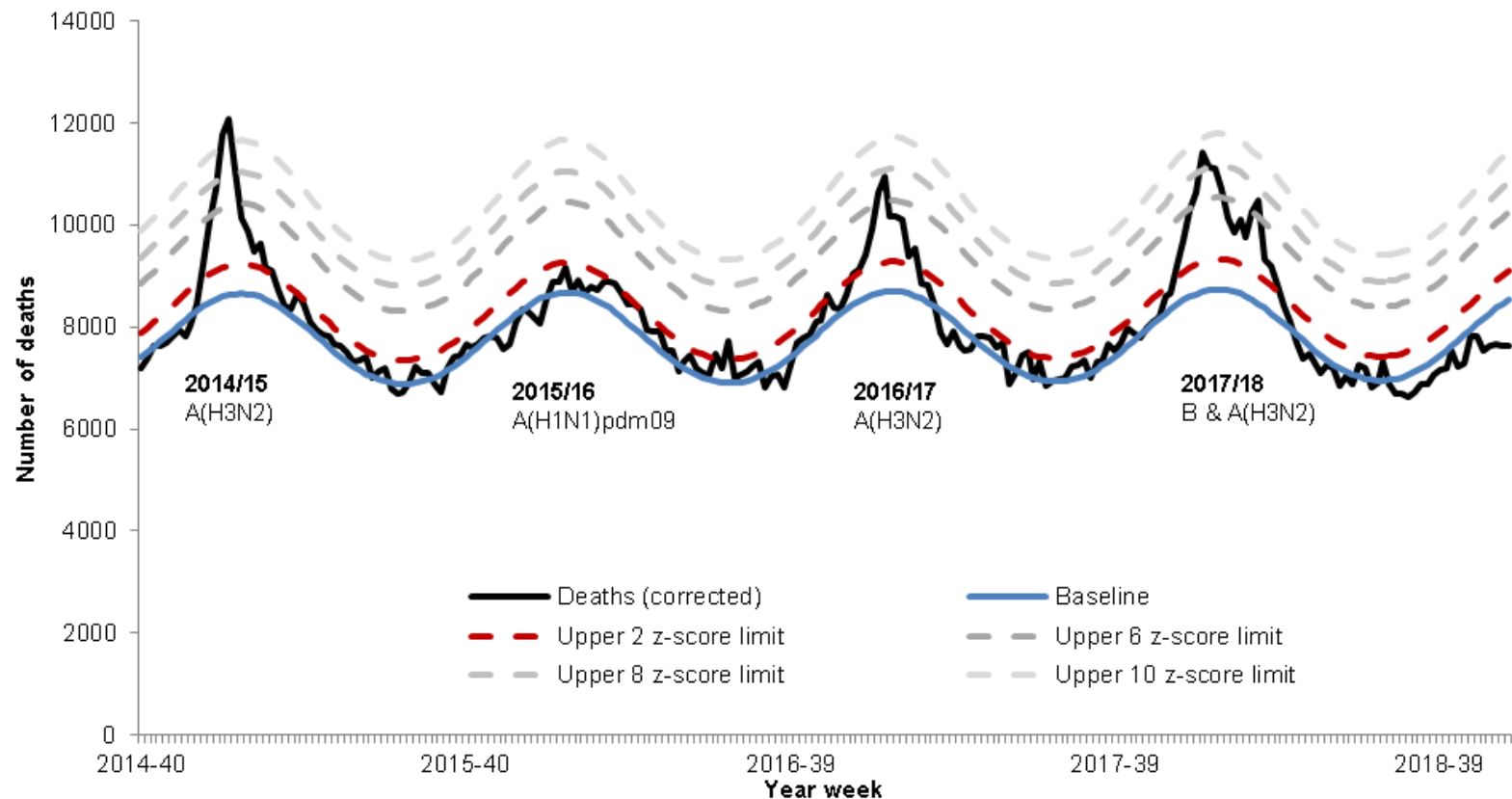




# All-cause mortality

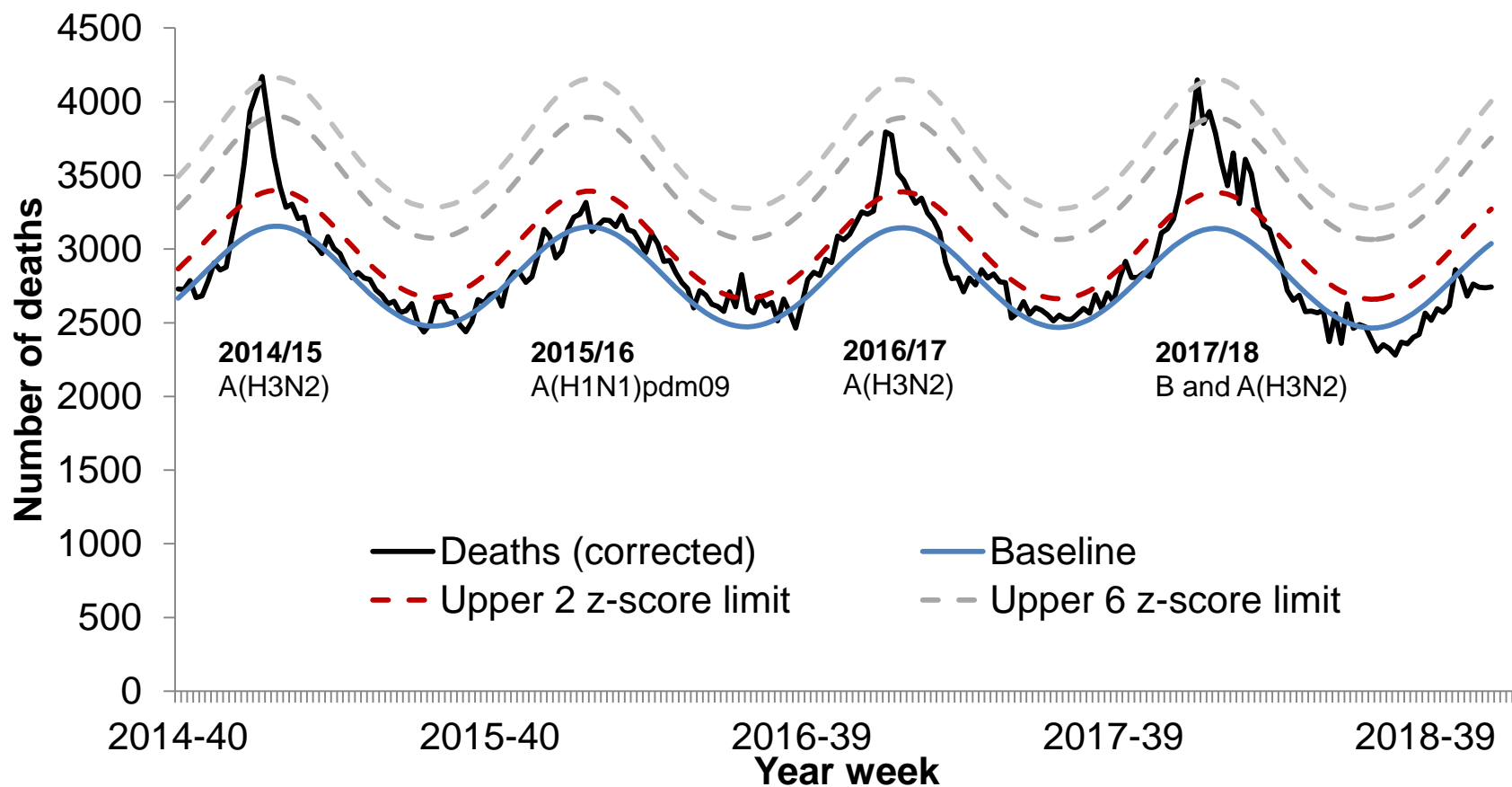


# Excess mortality (all causes) by week of death through the EuroMOMO algorithm in 65+ year olds, England



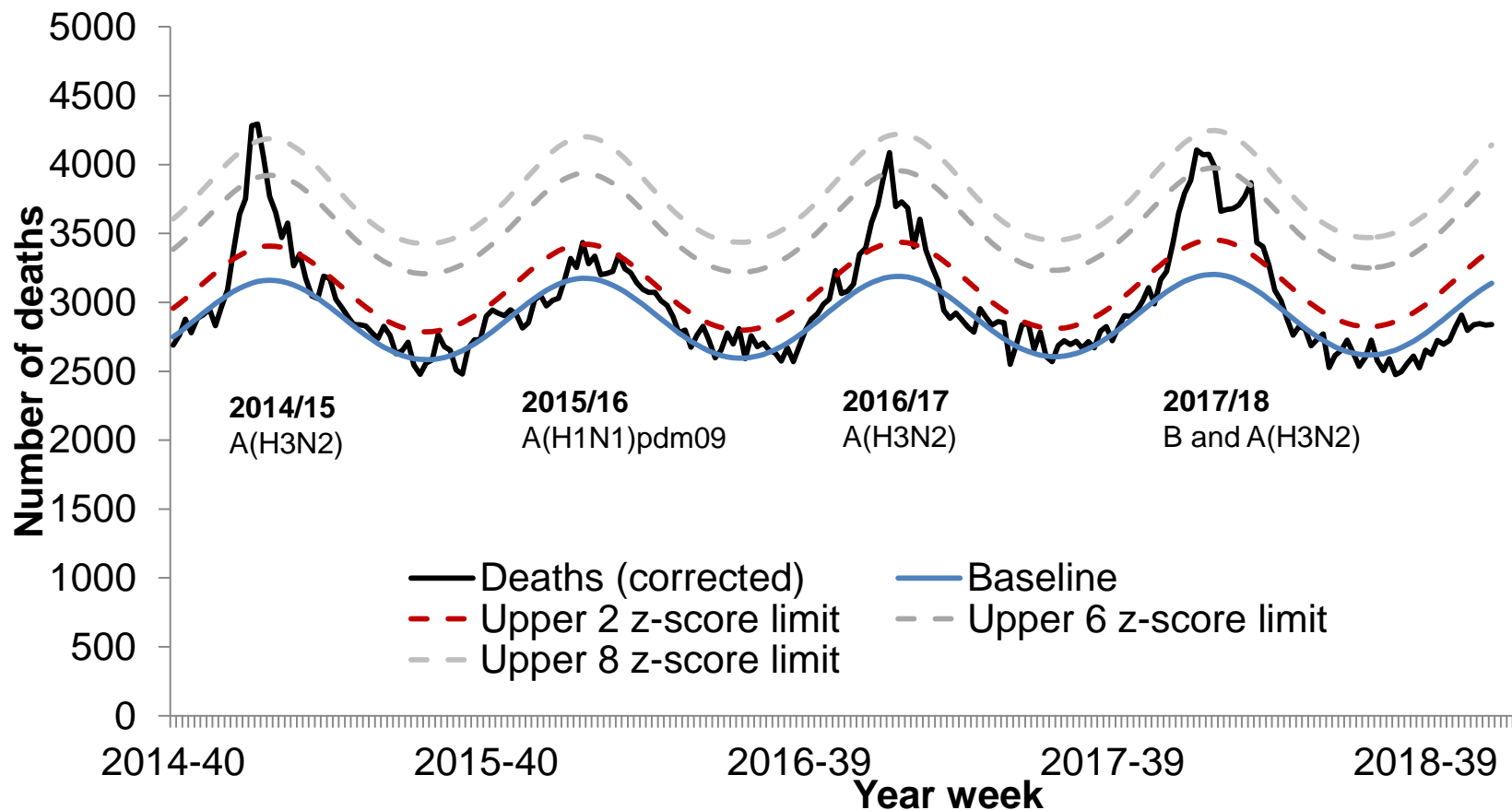


# Excess mortality (all causes) by week of death through the EuroMOMO algorithm in all ages, PHE North of England



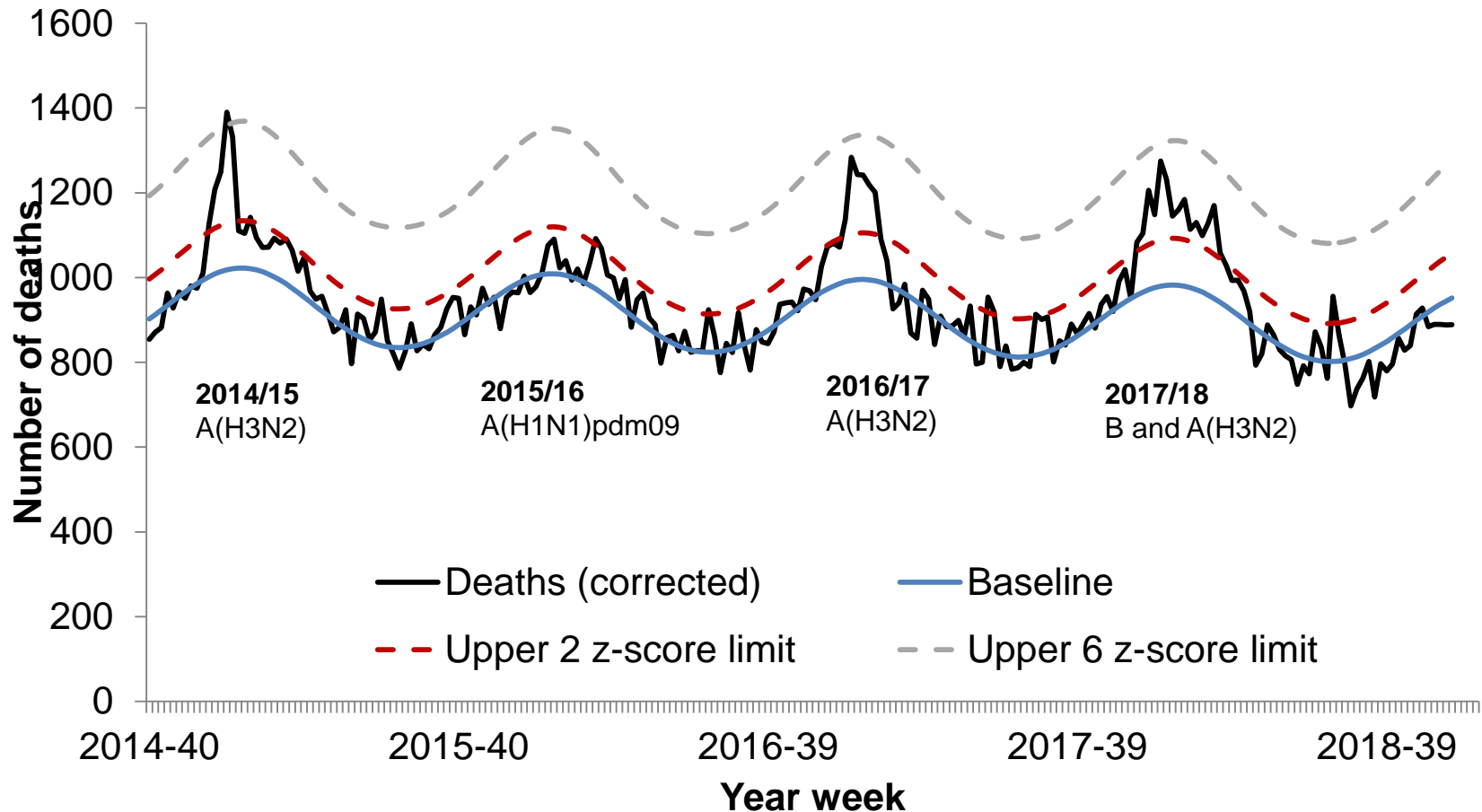


# Excess mortality (all causes) by week of death through the EuroMOMO algorithm in all ages, PHE Midlands and East of England



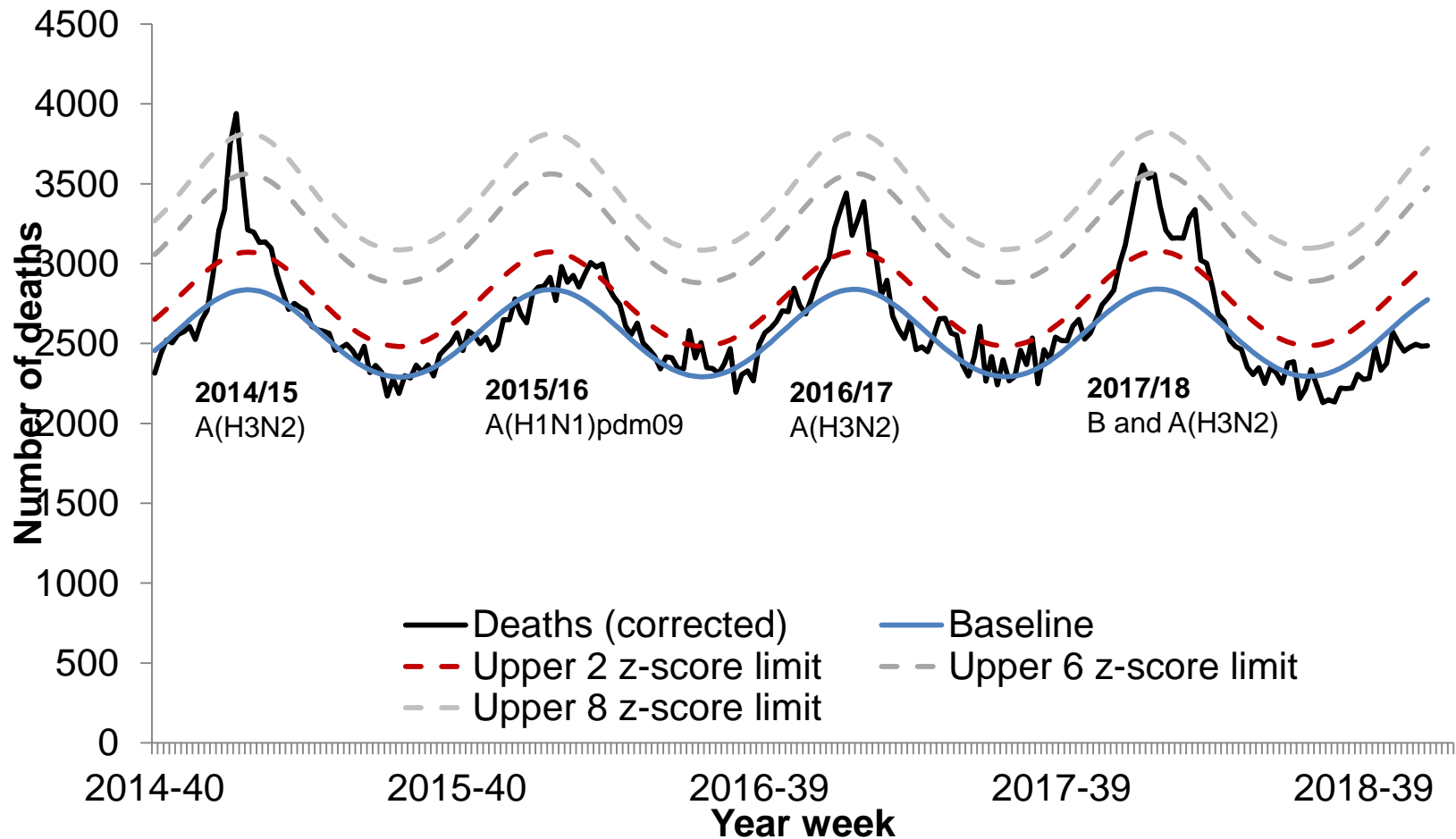


# Excess mortality (all causes) by week of death through the EuroMOMO algorithm in all ages, PHE London





# Excess mortality (all causes) by week of death through the EuroMOMO algorithm in all ages, PHE South of England



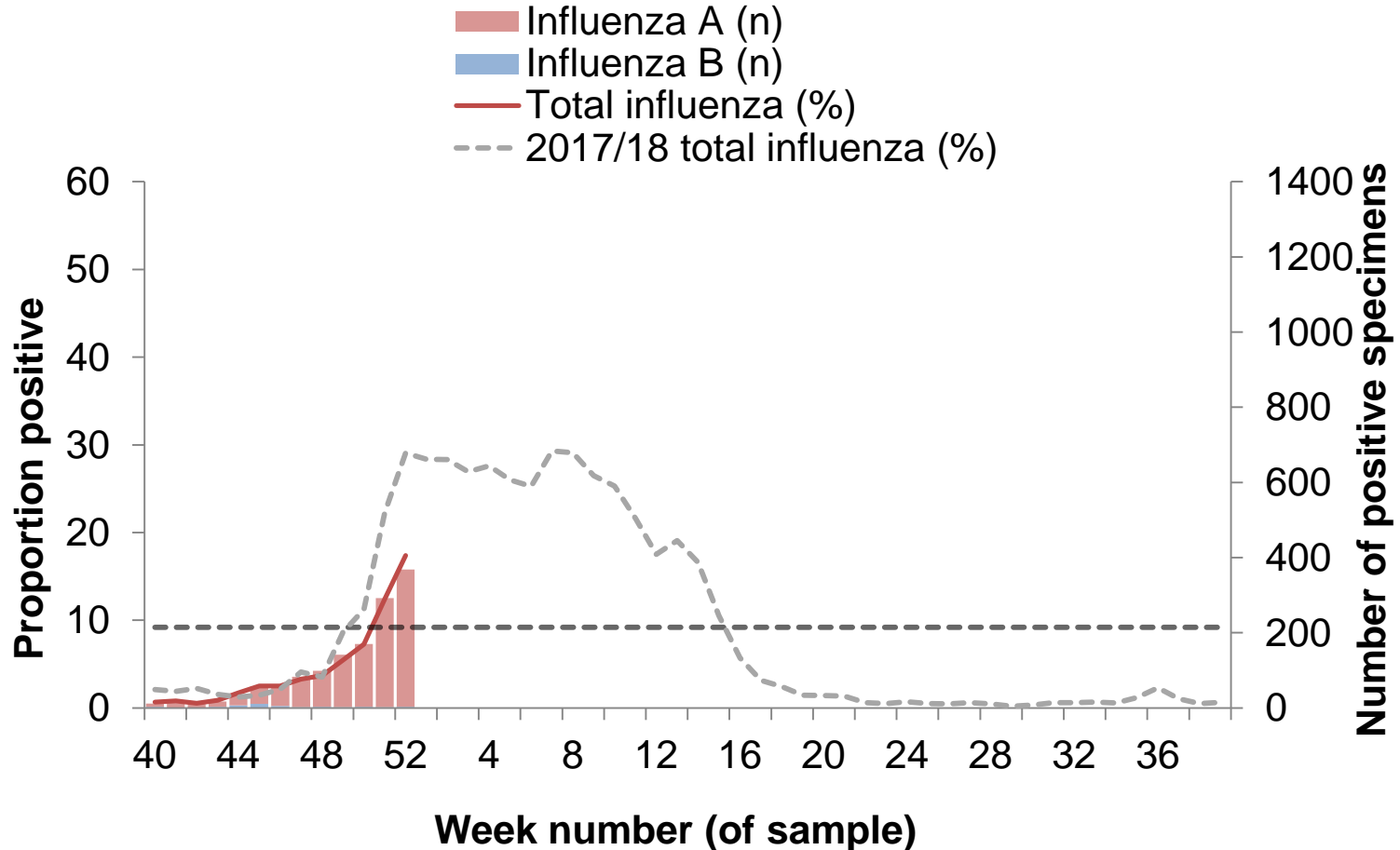


Public Health  
England

# Microbiological surveillance



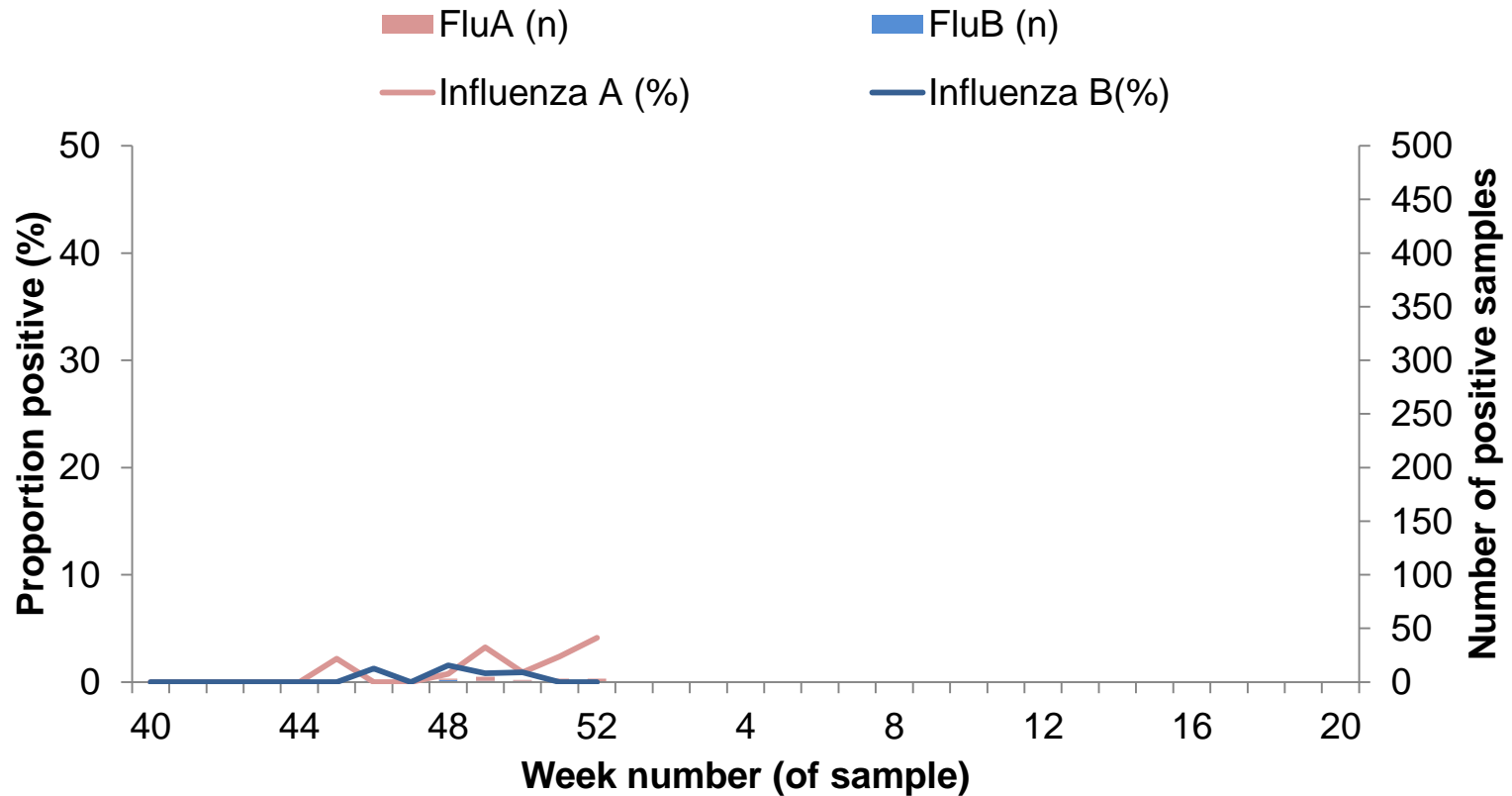
## DataMart: Number and proportion of samples positive for influenza, by type, England





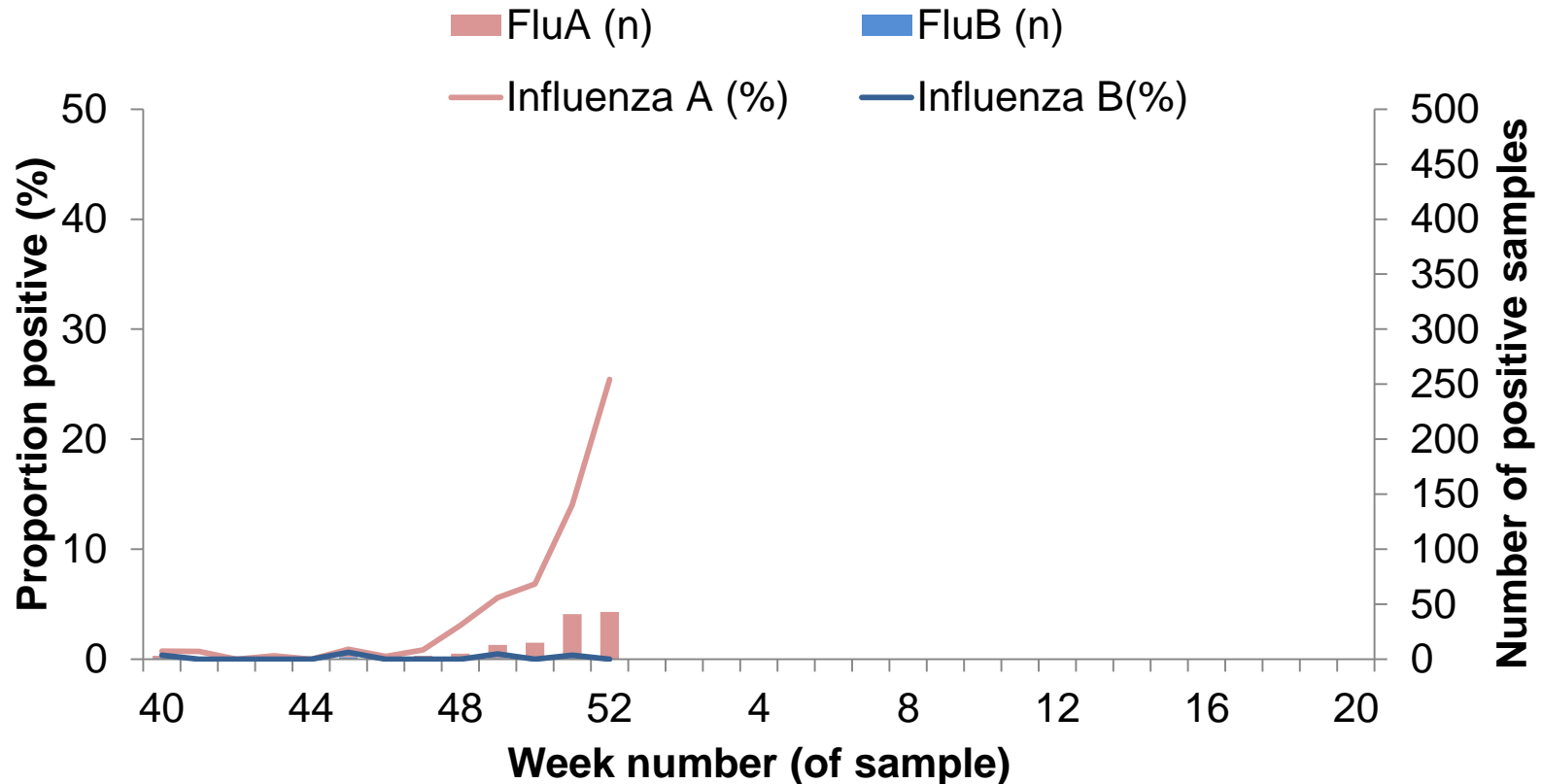


# DataMart: Number and proportion of samples positive for influenza, by type, PHE North East of England



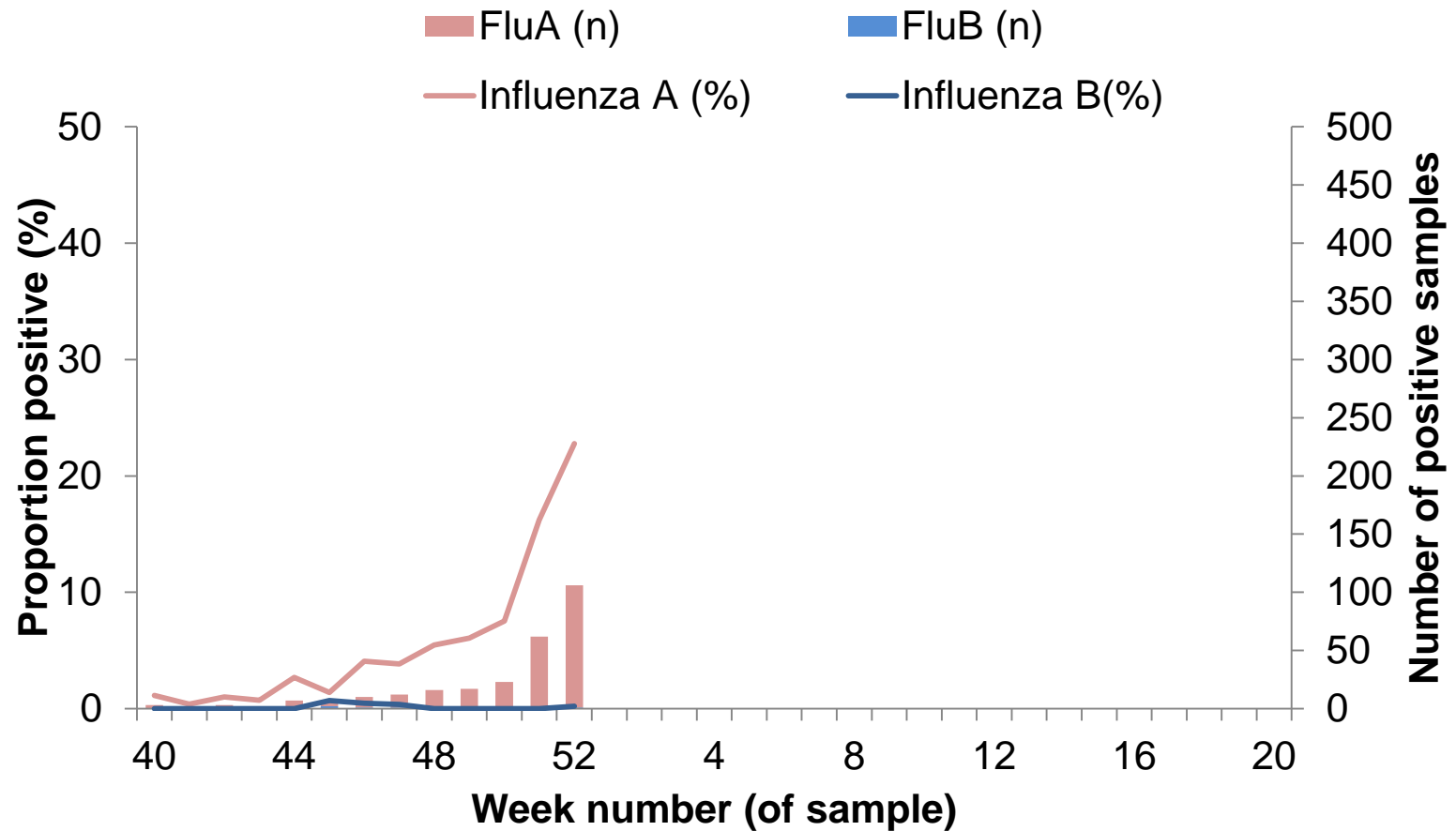


# DataMart: Number and proportion of samples positive for influenza, by type, PHE North West of England



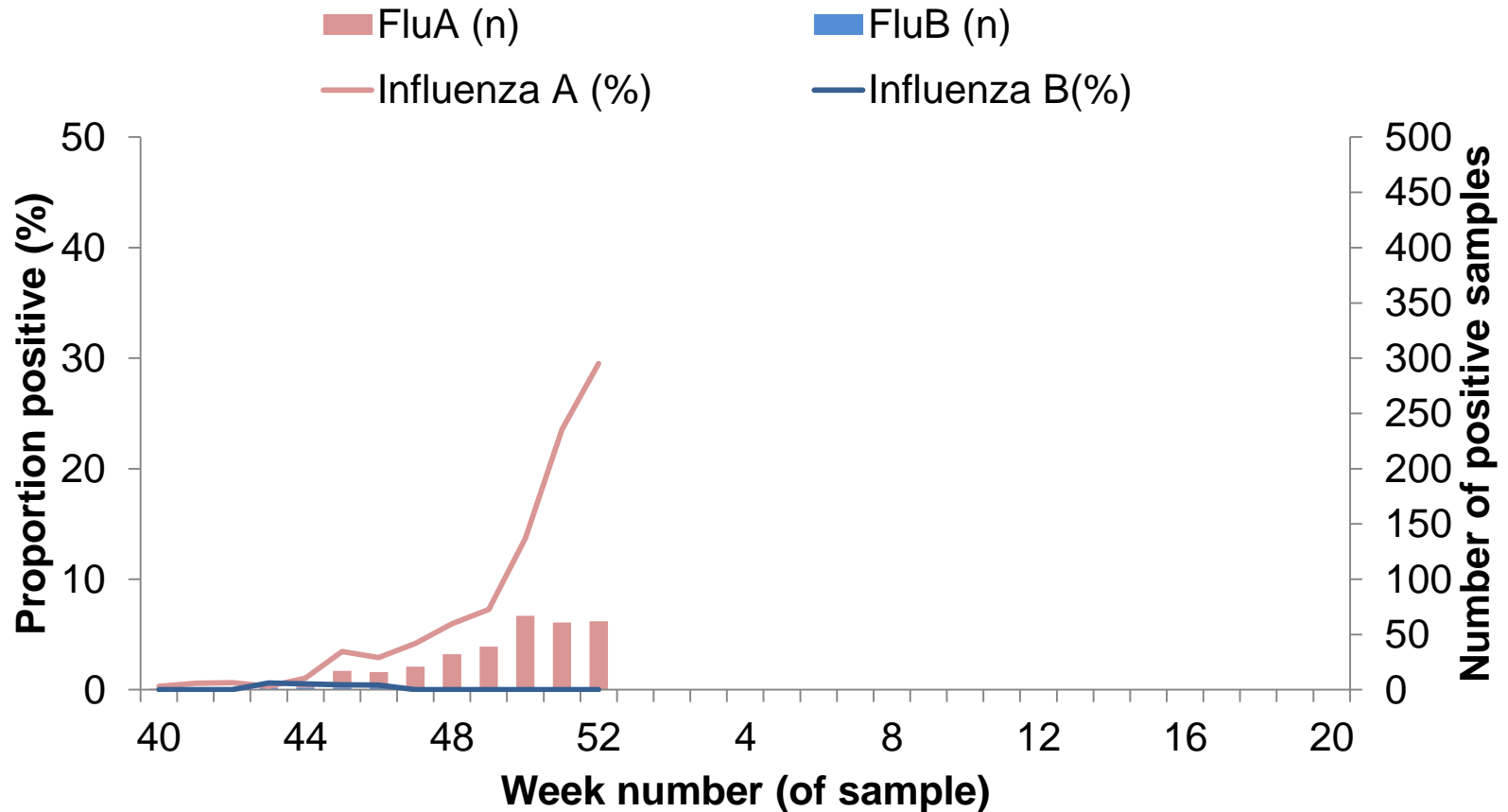


## DataMart: Number and proportion of samples positive for influenza, by type, PHE Yorkshire and Humber



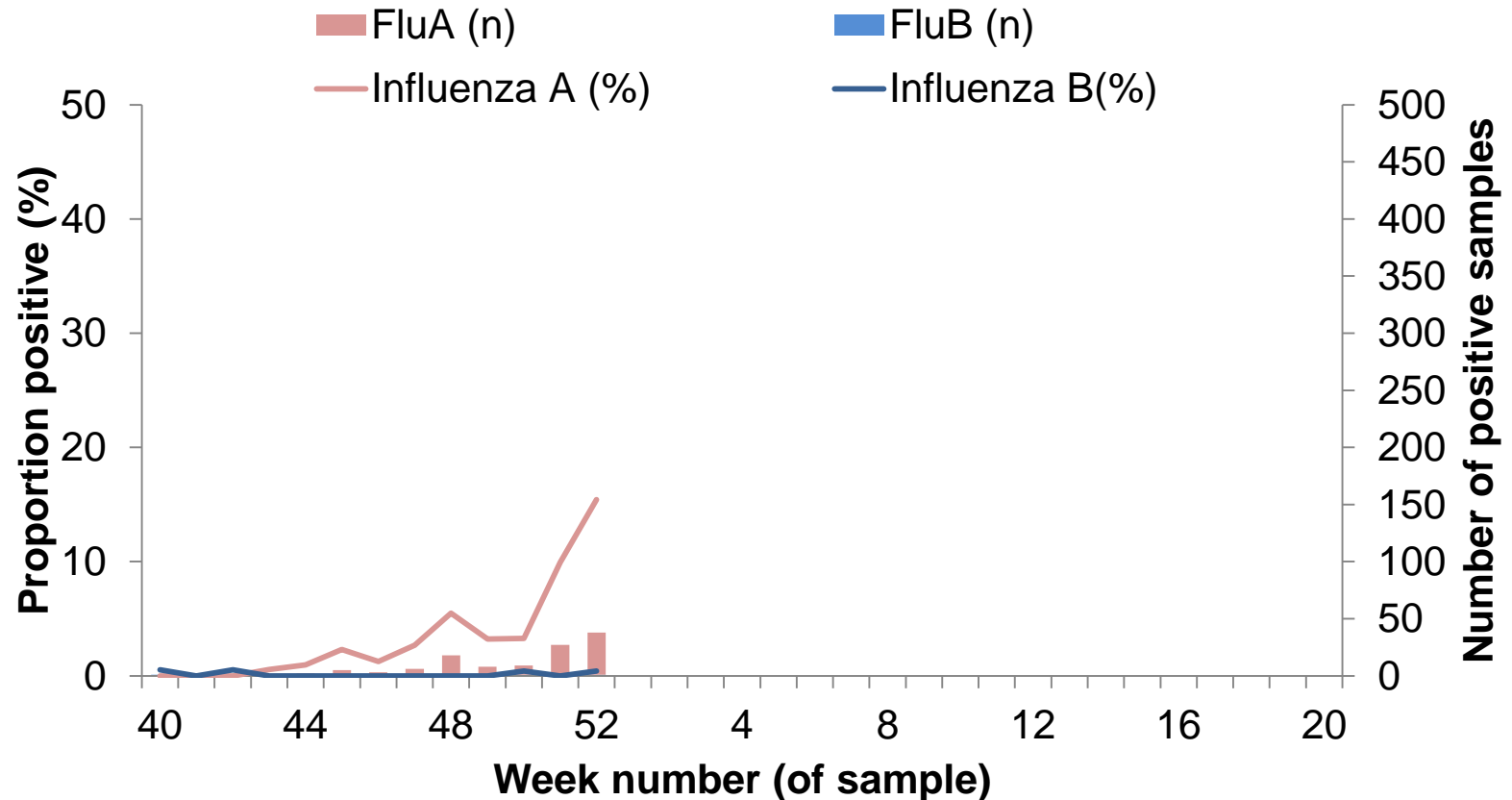


# DataMart: Number and proportion of samples positive for influenza, by type, PHE East Midlands of England



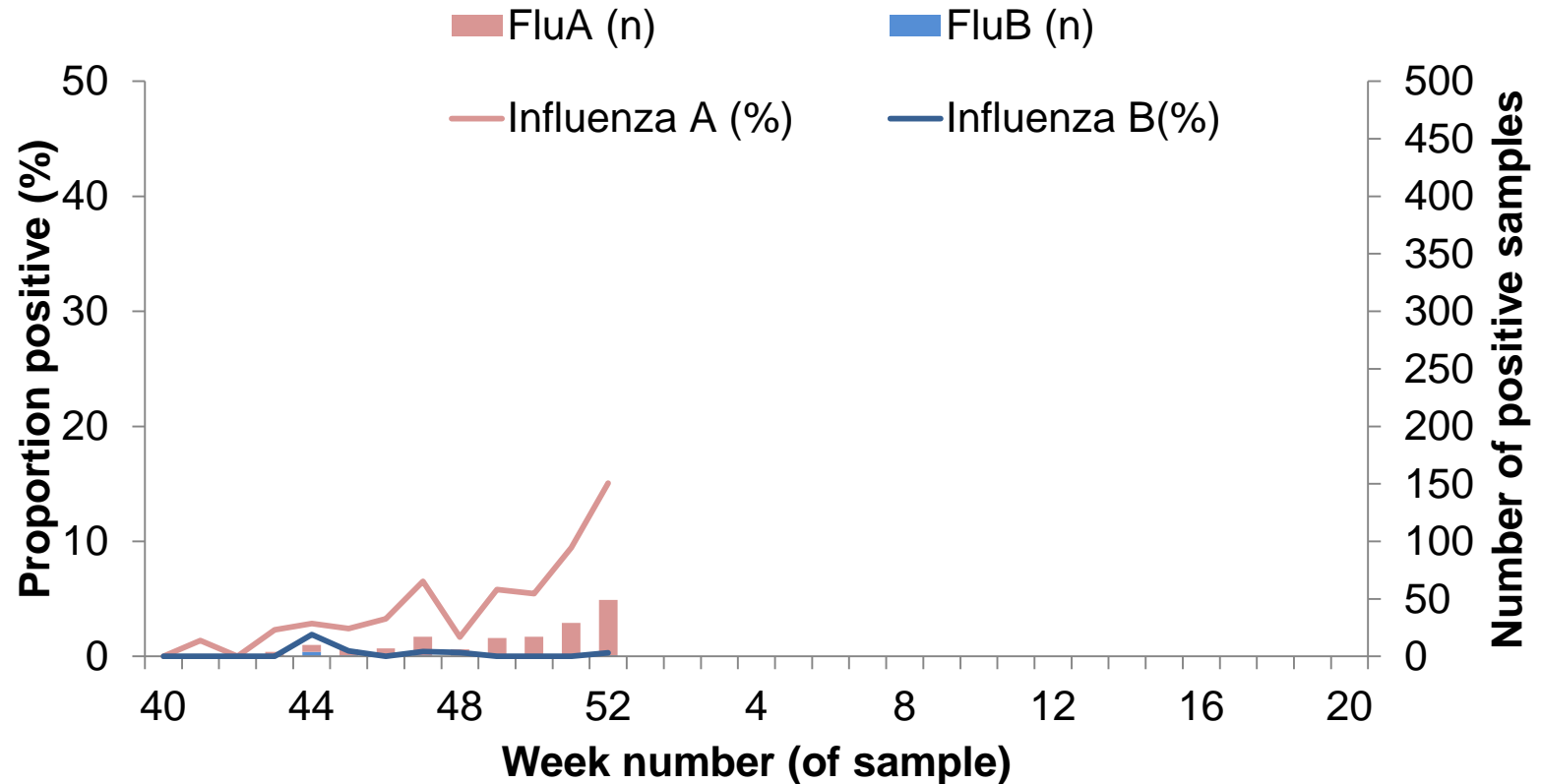


# DataMart: Number and proportion of samples positive for influenza, by type, PHE West Midlands of England



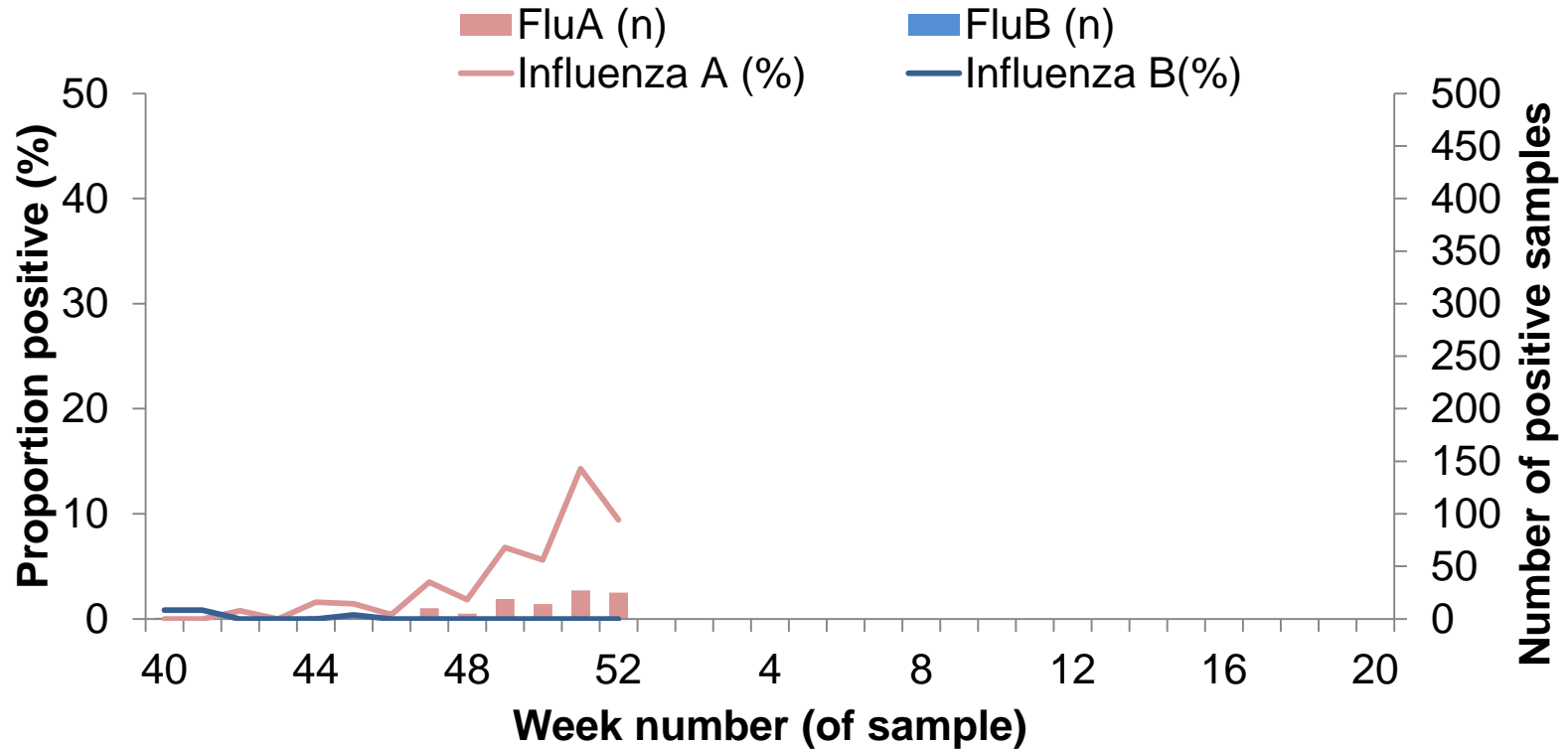


## DataMart: Number and proportion of samples positive for influenza, by type, PHE East of England



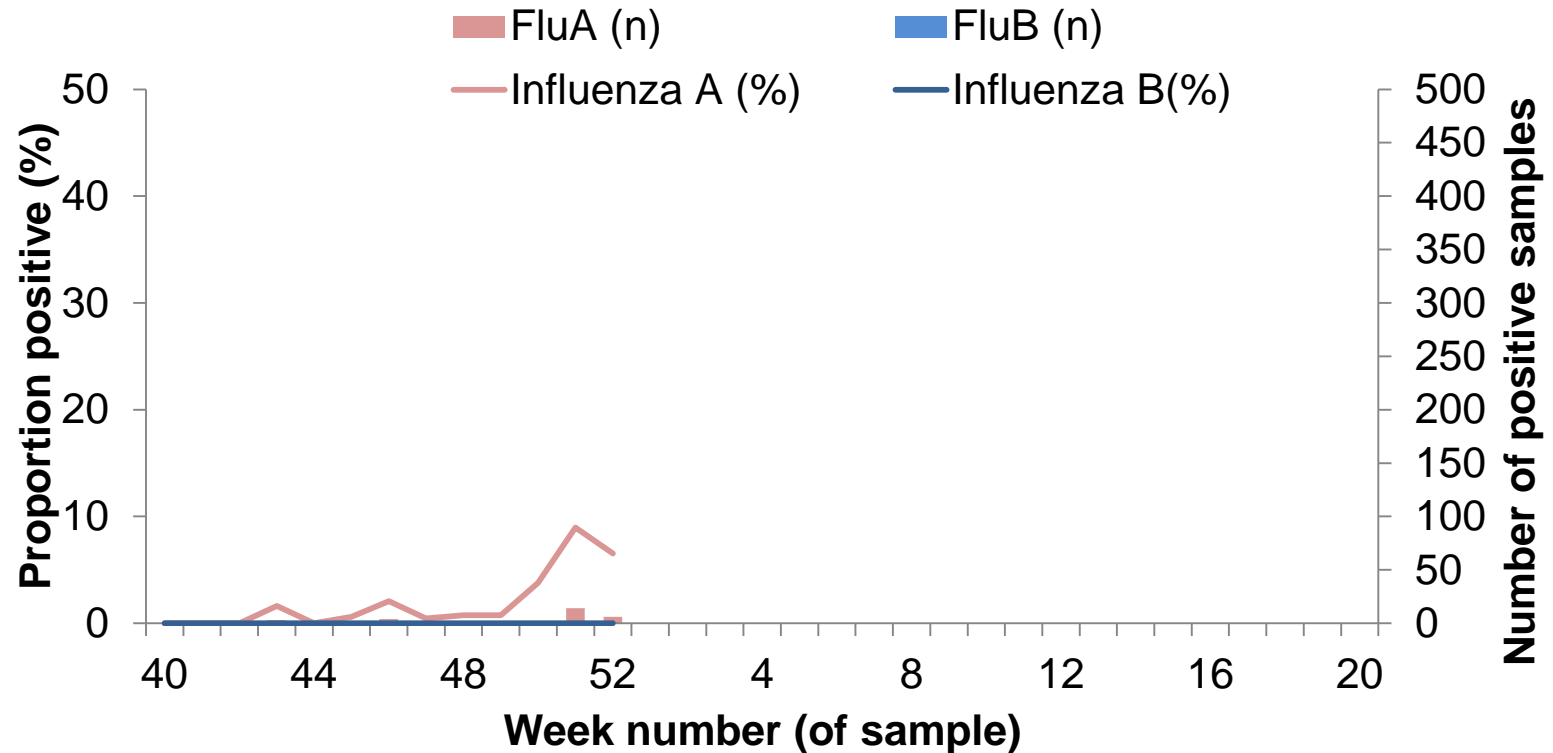


## DataMart: Number and proportion of samples positive for influenza, by type, PHE London





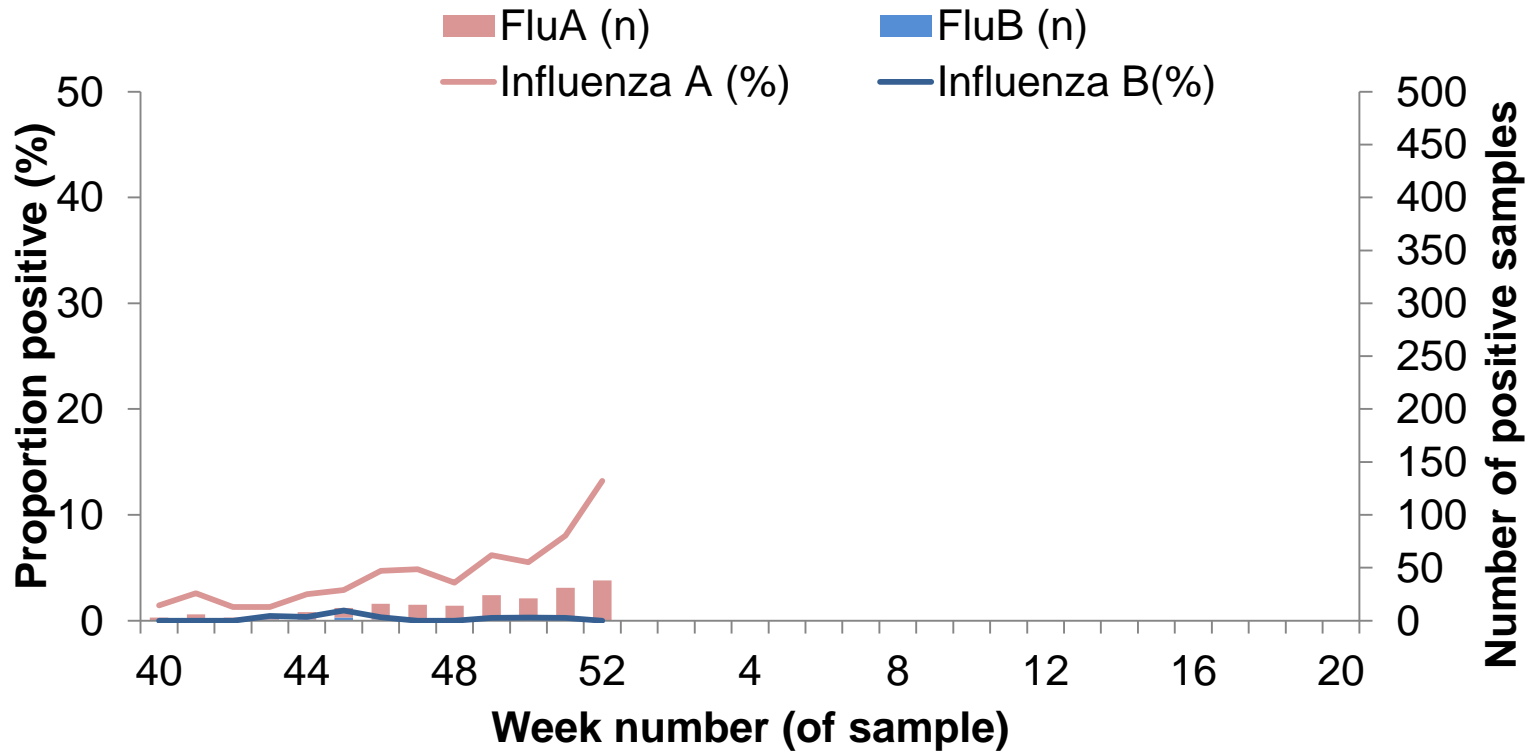
## DataMart: Number and proportion of samples positive for influenza, by type, PHE South East of England





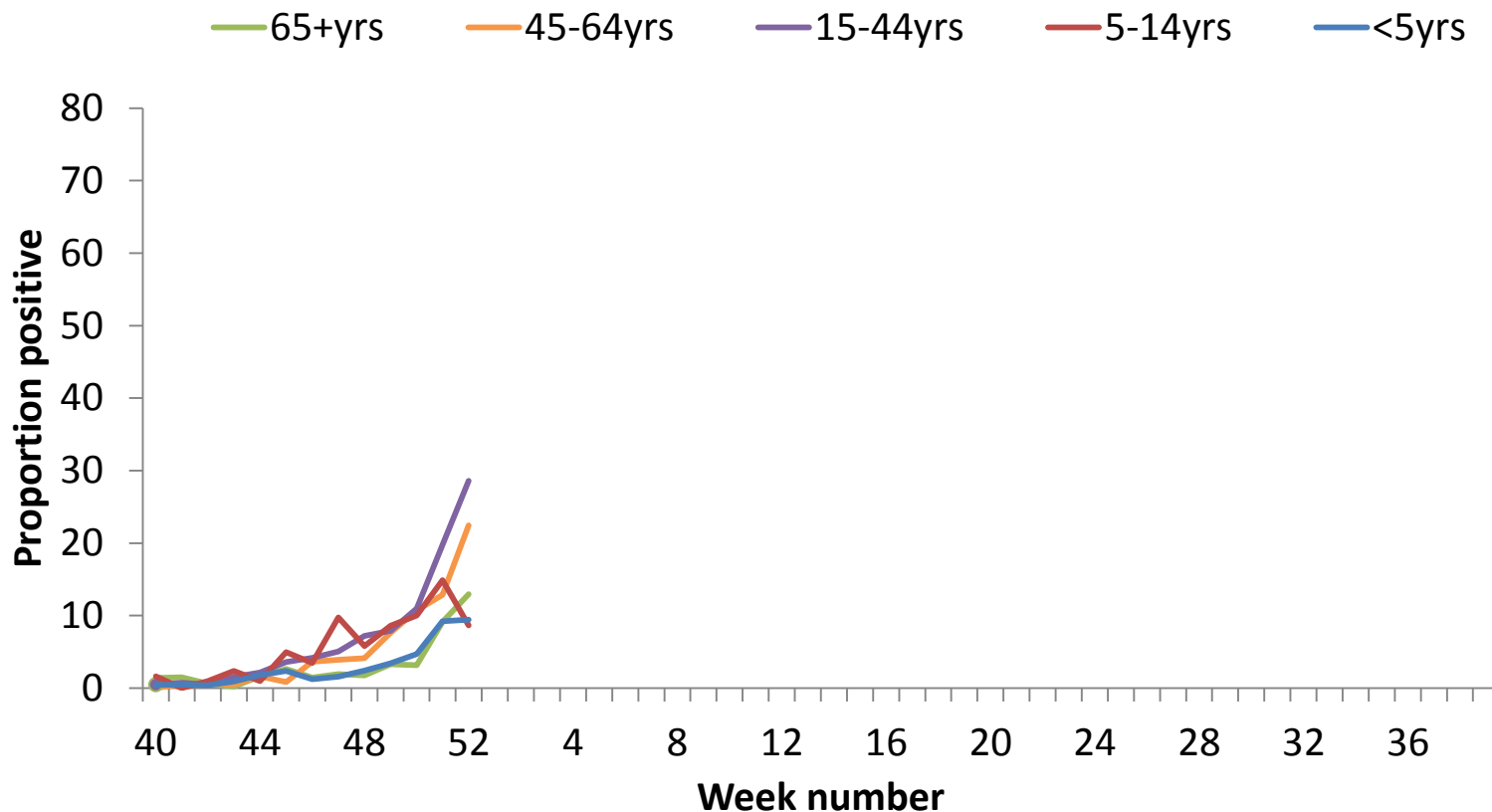


## DataMart: Number and proportion of samples positive for influenza, by type, PHE South West of England



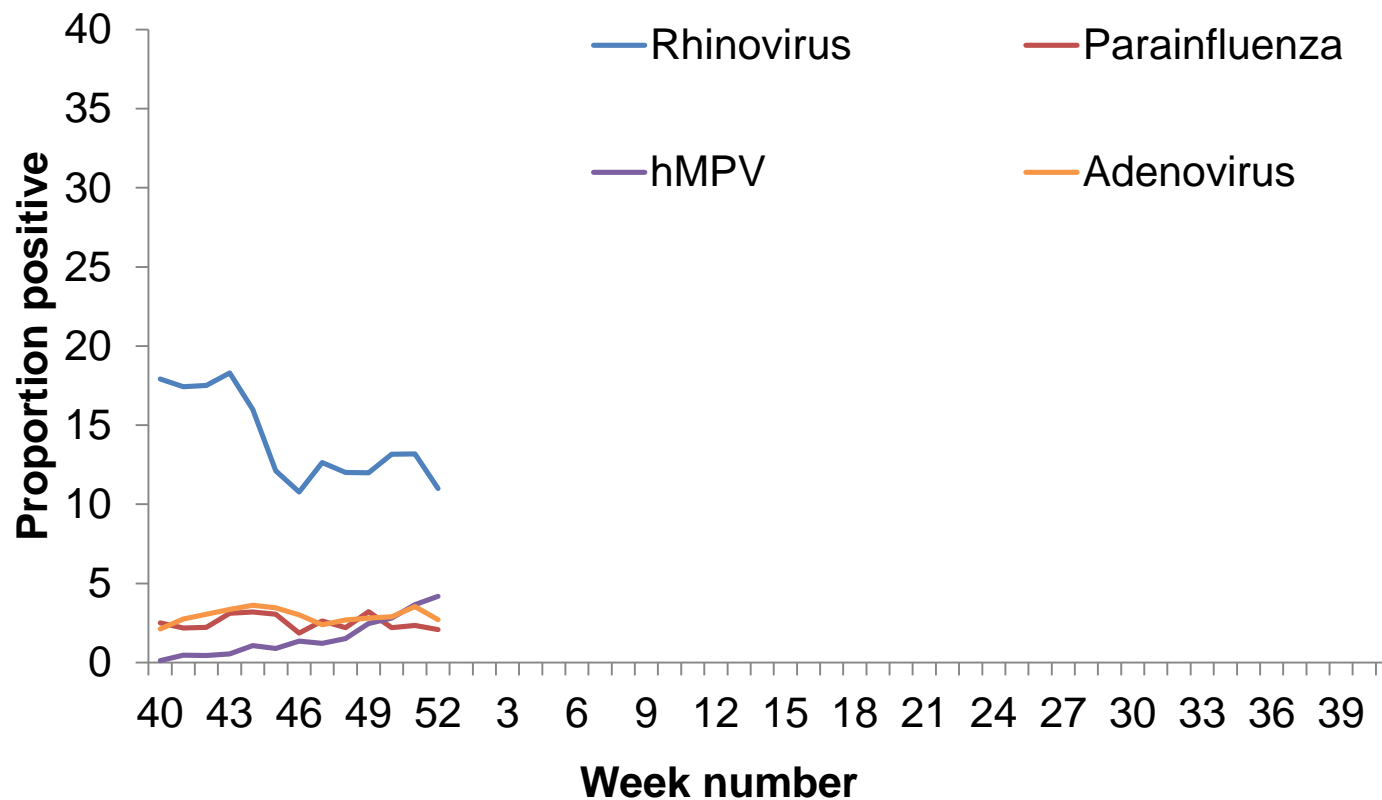


# DataMart: Proportion of samples positive for influenza, by age group





## DataMart: Proportion of samples positive for other viruses



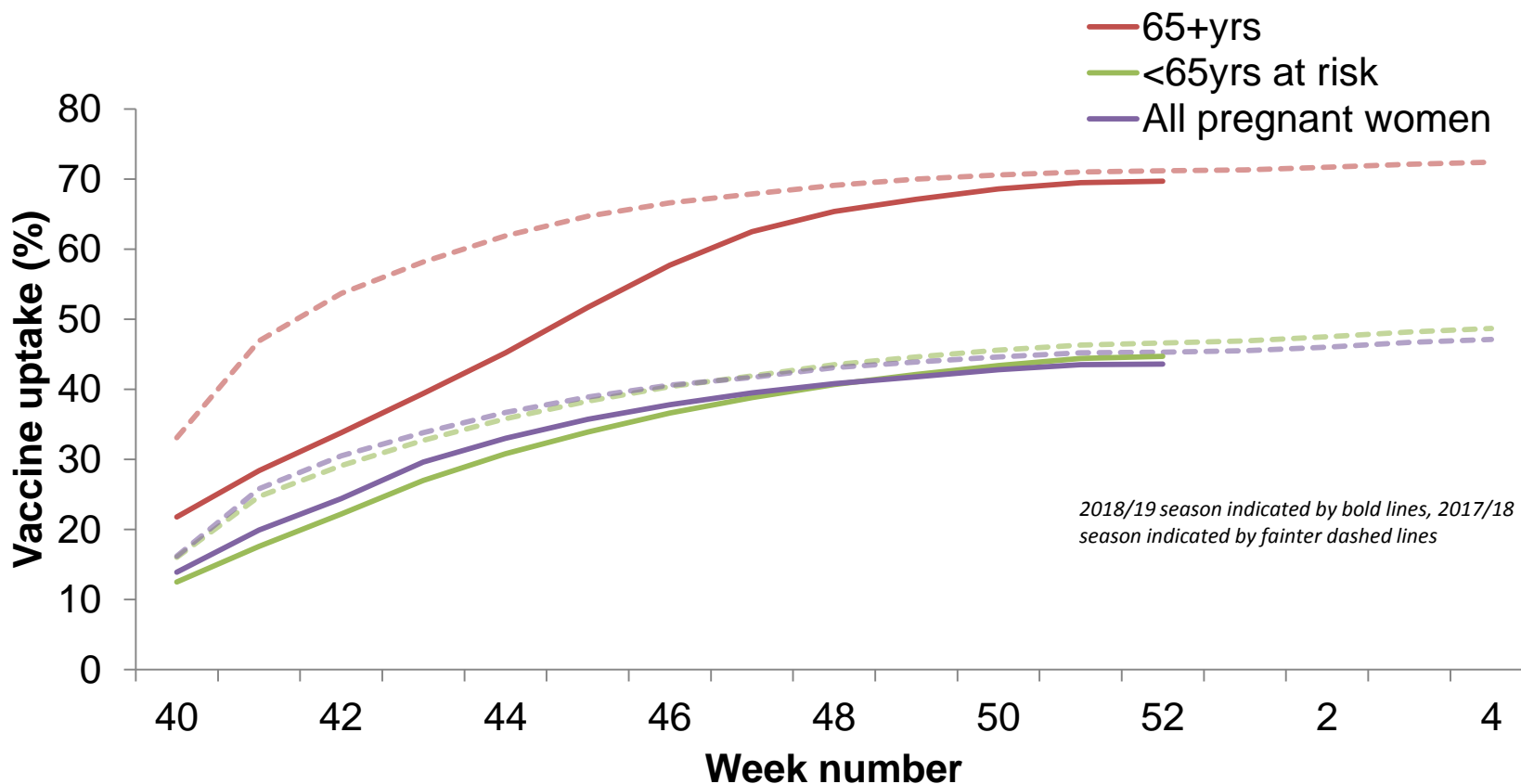


Public Health  
England

# Influenza vaccination

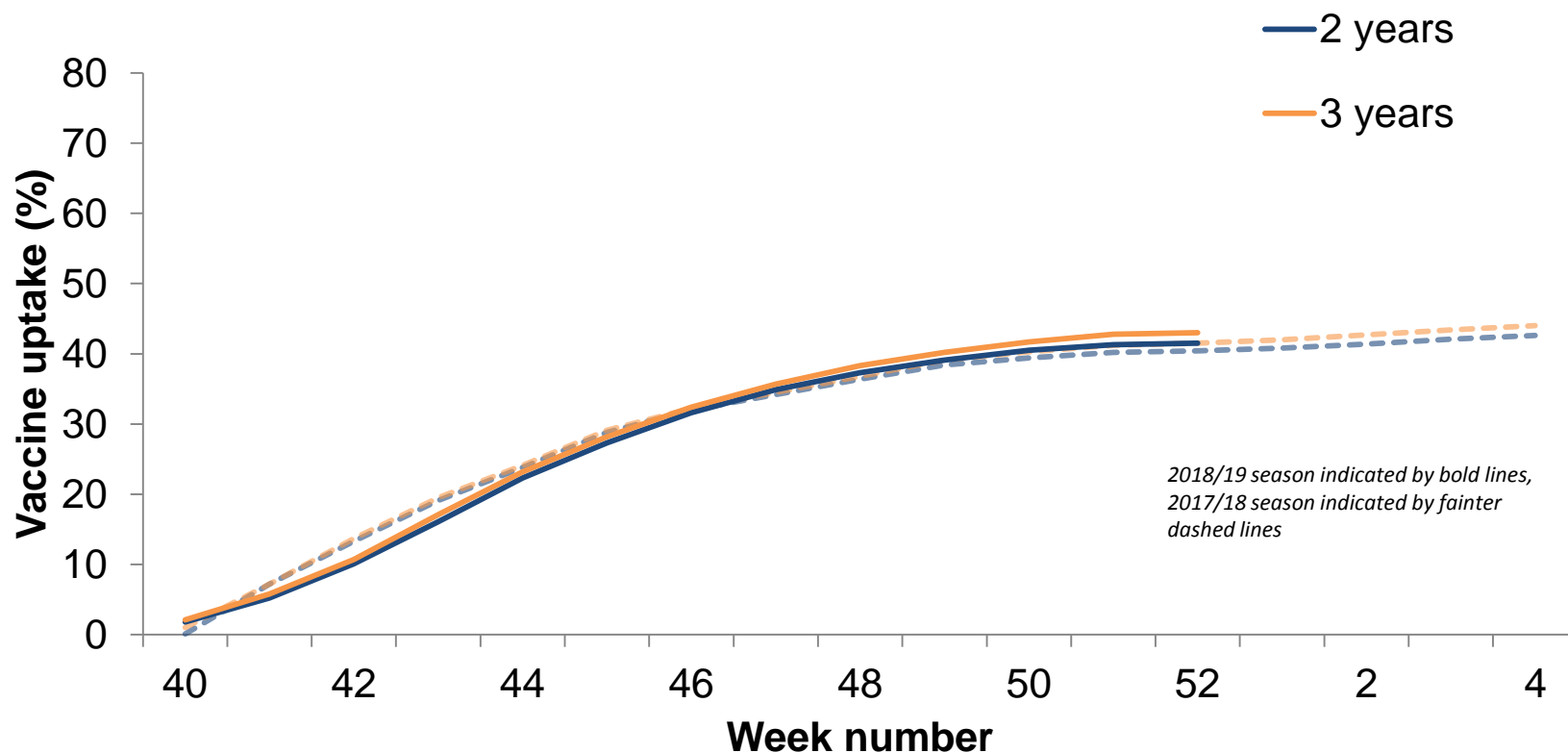


# Seasonal influenza vaccine uptake in targeted groups, 2018/19, England





# Seasonal influenza vaccine uptake in targeted groups, 2018/19, England





# Links

- Sources of UK flu surveillance data:

<https://www.gov.uk/sources-of-uk-flu-data-influenza-surveillance-in-the-uk>

- Weekly flu report

<https://www.gov.uk/government/statistics/weekly-national-flu-reports-2018-to-2019-season>