

Air Quality and Dust Monitoring Monthly Report – August 2018

Royal Borough of Kensington and Chelsea



SKANSKA



Department for Transport

High Speed Two (HS2) Limited has been tasked by the Department for Transport (DfT) with managing the delivery of a new national high speed rail network. It is a non-departmental public body wholly owned by the DfT.

High Speed Two (HS2) Limited,
Two Snowhill
Snow Hill Queensway
Birmingham B4 6GA

Telephone: 08081 434 434

General email enquiries: HS2enquiries@hs2.org.uk

Website: www.gov.uk/hs2

A report prepared by Costain Skanska on behalf of HS2 Ltd.

High Speed Two (HS2) Limited has actively considered the needs of blind and partially sighted people in accessing this document. The text will be made available in full on the HS2 website. The text may be freely downloaded and translated by individuals or organisations for conversion into other accessible formats. If you have other needs in this regard please contact High Speed Two (HS2) Limited.

© High Speed Two (HS2) Limited, 2018, except where otherwise stated.

Copyright in the typographical arrangement rests with High Speed Two (HS2) Limited.

This information is licensed under the Open Government Licence v2.0. To view this licence, visit www.nationalarchives.gov.uk/doc/open-government-licence/version/2 **OGI** or write to the Information Policy Team, The National Archives, Kew, London TW9 4DU, or e-mail: psi@nationalarchives.gsi.gov.uk. Where we have identified any third-party copyright information you will need to obtain permission from the copyright holders concerned.

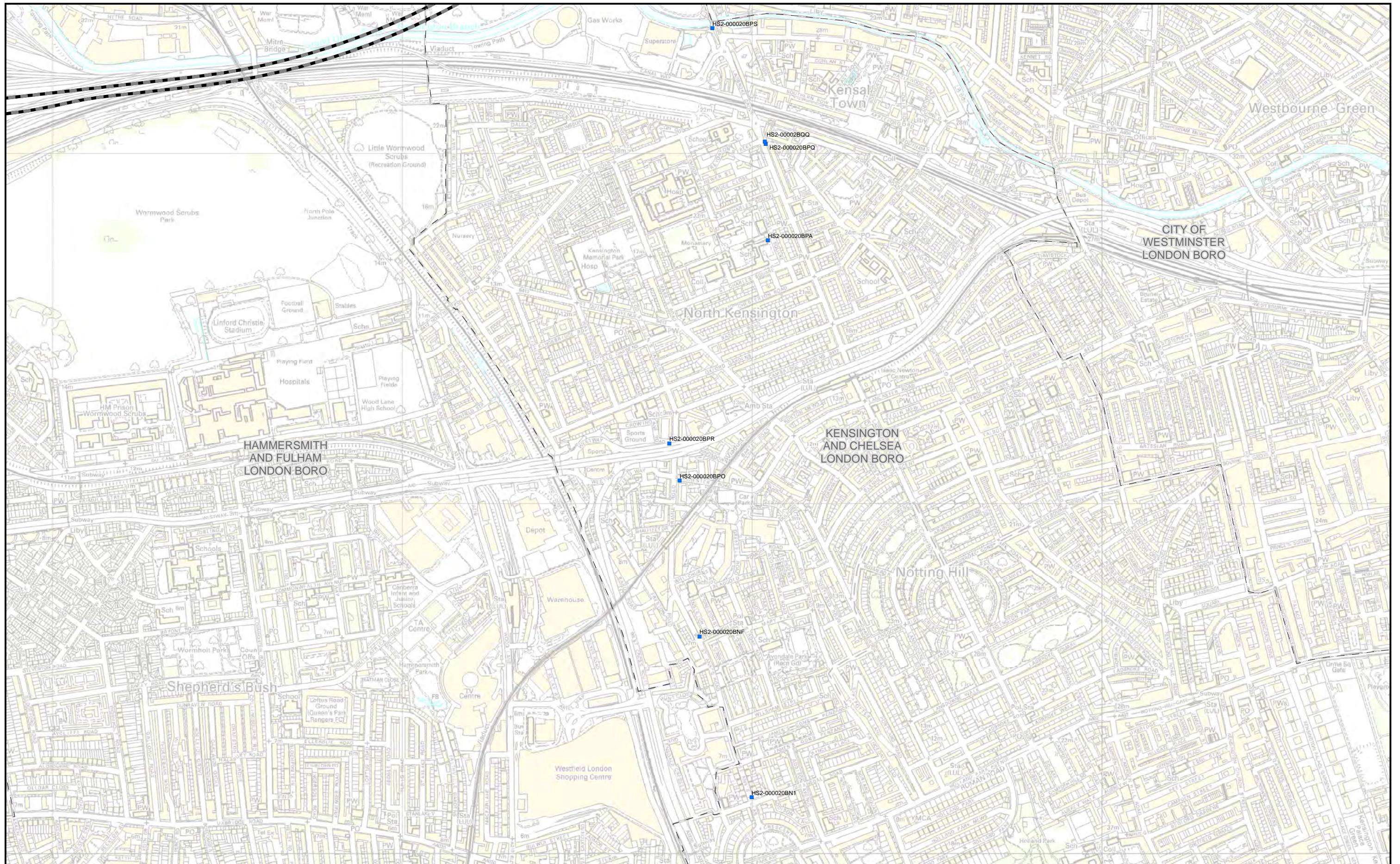


Printed in Great Britain on paper containing at least 75% recycled fibre.

Monthly Summary


- 1.1.1 This Summary Report is published in fulfilment of commitments detailed in the High Speed Rail (London-West Midlands) Environmental Minimum Requirements, Annex 1: Code of Construction Practice, for the nominated undertaker to present the results of air quality monitoring undertaken in the Royal Borough of Kensington and Chelsea (RBKC) during July 2018.
- 1.1.2 Figure 1 in Appendix A indicates the current air quality monitoring locations.
- 1.1.3 This summary should be read in conjunction with the overview monitoring report available from www.gov.uk/government/collections/monitoring-the-environmental-effects-of-hs2, which highlights: the applicable standards and guidance, as well as the air quality and dust monitoring methodologies to be implemented by nominated undertakers throughout construction.
- 1.1.4 There are no current worksites located within the RBKC. Therefore, no dust monitoring has been carried out.
- 1.1.5 Diffusion tube monitoring of Nitrogen Dioxide (NO₂) was undertaken at seven (7) locations in July 2018, around highways within the RBKC as part of the management of air quality where significant effects may occur as a result the scheme.
- 1.1.6 Diffusion tube monitoring results are provided from the laboratory analysis, and therefore still require various analysis and adjustments to be undertaken. Final corrected results will be presented and described in the annual report. However, based on the results to date, no unexpected values were recorded during the monitoring period.
- 1.1.7 NO₂ monitoring locations and results are presented in Appendix B, Table 1, together with the 2018 running mean.
- 1.1.8 There were no complaints received, relating to air quality, during this monitoring period.


Appendix A – Worksites and Monitoring Locations




- Legend**
- Route in tunnel
 - Route on surface
 - Diffusion tube monitoring location

Figure Number	
Figure Name	Monitoring locations in RBKC
Royal Borough of Kensington and Chelsea	


 HS2 Ltd accept no responsibility for any circumstances, which arise from the reproduction of this map after alteration, amendment or abbreviation or if it is issued in part or issued incomplete in any way.



Scale at A3: 10,000



Appendix B – Air Quality Monitoring Results

Table 1: NO₂ monitoring locations around highways, NO₂ concentrations and monthly monitoring results with running mean for 2018 (µg/m³)

Monitoring Site ID	Location description	Coordinates (X, Y)	Jan	Feb	Mar	Apr	May	Jun	Jul	Aug	Sep	Oct	Nov	Dec	Mean ¹
HS2-000020BN1	Sign post on St Ann's Villas	523998, 180160	57	50	51	50	50	41	52						50
HS2-000020BNF	Unsuitable for long vehicles sign on St Ann's Villas	523849, 180620	Tube missing	Tube missing	54	47	45	40	45						46
HS2-000020BPO	Lamp post off Silchester Road	523792, 181066	42	48	42	40	47	34	37						41
HS2-000020BPQ (location replaced by HS2-000020BQQ due to site being impacted by overgrown vegetation)	Lamp post along Ladbroke Grove, near shops and bus stop at Trevorton Road junction	524038, 182028	43	Tube missing	47	37	42	39	No data						42
HS2-000020BPR	Lamp post at junction of Crowthorne Road and Bramley Road	523763, 181172	Tube missing	46	46	41	46	39	45						44
HS2-000020BPS	Lamp post by fence on B450 Ladbroke Grove, south of A404 Harrow Road	523886, 182358	51	53	54	54	60	40	46						51

¹ Note: to aid interpretation and conform with best practice, the monthly measurements in this table are reported rounded to the nearest whole number. The annual mean presented here is calculated based on laboratory data to 4 significant figures, rounded to a whole number, and therefore may differ slightly to a mean derived from averaging the rounded monthly measurements in the table.

Monitoring Site ID	Location description	Coordinates (X, Y)	Jan	Feb	Mar	Apr	May	Jun	Jul	Aug	Sep	Oct	Nov	Dec	Mean ¹
HS2-000020BQQ (location replaces HS2-000020BPQ in near identical location a few metres away)	Lamp post along Ladbroke Grove, near shops and bus stop at Trevorton Road junction	524036, 182034	No data	No data	No data	No data	No data	No data	51						51
HS2-000020BPA	Triplicate site at Sion Manning School, St. Charles' square, next to the North Kensington urban background automatic monitoring stations	524045, 181752	40	37	33	30	30	23	25						31