



Ministry of Housing,
Communities &
Local Government

Energy Performance of Buildings Certificates Statistical Release: Q3 2018: England and Wales

Energy Performance Certificates (EPCs)

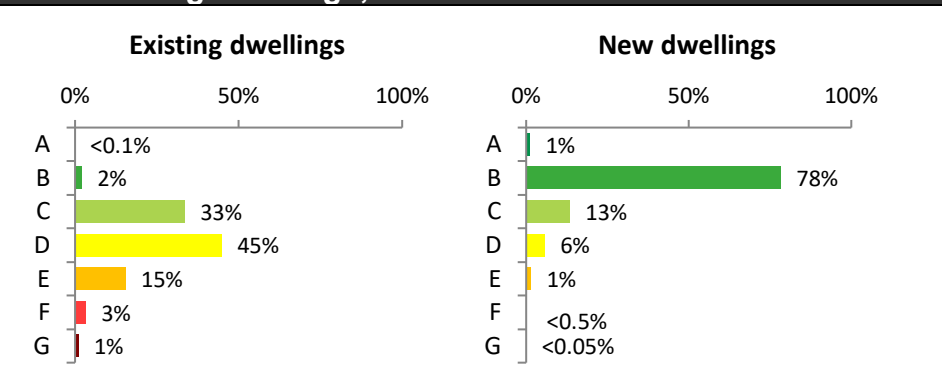
In the quarter ending September 2018:

- 384,000 EPCs were lodged in England and Wales; an increase of 28% on the same quarter in 2017.
- Most (361,000) of these EPCs were for the sale and letting of existing dwellings and the construction of new dwellings; an increase of 25% on the same quarter last year.
- The remaining 23,000 EPCs were for non-domestic properties; an increase of 18% compared with the corresponding quarter last year.
- 17% (60,000) of domestic EPCs were for new build dwellings and conversions; an increase of 10% on the equivalent quarter in 2017.

In the year ending September 2018:

- 1,278,000 domestic EPCs were lodged in England and Wales, an increase of 1% on the previous year.
- Of these, 240,000 EPCs covered new build dwellings and conversions, an increase of 9% on the previous year, and the largest annual total for new properties since 2008 when the statistical record began. 230,000 of those were lodged in England alone, an increase of 10% on the previous year.

Energy Efficiency Ratings (Q3 2018), which shows that new domestic dwellings have a higher energy efficiency rating than existing dwellings, so should have lower fuel costs.



Throughout this commentary the statistics on lodgements have been quoted to the nearest thousand for EPCs and the nearest hundred for DEC. Percentage changes have been calculated using unrounded figures.

Energy Efficiency *Experimental* *Official Statistics* Release

31 October 2018

Introduction	2
All Certificates- Cumulative Totals	3
All Domestic Properties Existing and New Domestic Properties Compared	3
Non-Domestic Properties Display Energy Certificates	6
Transaction types for domestic dwellings Accompanying Tables	7
Definitions	9
Technical Notes	11
	12

Responsible Statistician:

Anna Carlsson-Hyslop

Statistical enquiries:

Office hours:

0303 444 2513

EPBStats@communities.gov.uk

Media Enquiries:

0303 444 1209

newsdesk@communities.gov.uk

Date of next publication:

30th Jan 2019

Introduction

This statistical release presents experimental official statistics based on Energy Performance Certificates (EPCs) issued for domestic and non-domestic buildings and Display Energy Certificates (DECs) issued for buildings occupied by public authorities. The certificates are lodged on the Energy Performance of Buildings Registers (“the Registers”) for England and Wales.

Energy Performance Certificates

An Energy Performance Certificate (EPC) indicates the energy efficiency of building. The assessments are banded from A to G, where A (or A+ for non-domestic properties) is the most efficient in terms of likely fuel costs and carbon dioxide emissions. An EPC is required whenever a building is newly constructed, sold or let. The purpose of an EPC is to show prospective tenants or buyers the energy efficiency of the property. EPCs are valid for up to 10 years.

Display Energy Certificates

Larger properties occupied by public authorities and frequently visited by the public must display a Display Energy Certificate (DEC) in a prominent place. DECs show the actual energy consumption of a building and are accompanied by reports which provide recommendations on potential energy saving measures.

Experimental Official Statistics

Experimental statistics are defined in the Code of Practice for Statistics as ‘new official statistics undergoing evaluation’. They are published in order to involve users and stakeholders in their development and as means to build in quality at an early stage.

These statistics are based on information from EPCs and DECs lodged on the Registers. This administrative data is subject to continuing quality investigation and improvement (see Technical Notes on Data Quality). They have been released because they have been judged to be of immediate value to interested parties and to encourage user feedback.

Open Data

Some of the statistics shown in this release are available in fully open and linkable data formats at Open Data Communities:

<http://opendatacommunities.org/>.

There are also property level EPC and DEC data available at Open Data Communities:

<https://epc.opendatacommunities.org/>.

All Certificates – cumulative totals

Since 2008, 18,980,000 EPCs have been lodged on the Registers, with domestic properties accounting for 96% of the total (Live Table A1). In the last 12 months, 1,367,000 EPCs were lodged – an increase of 2% compared with the previous 12 months. Of these, 384,000 were lodged in the quarter ending September 2018; an increase of 28% compared with the same quarter in 2017 (Live Table A1).

Since 2008, 18,160,000 EPCs covering domestic properties (including new properties) in England and Wales have been lodged on the Register. Of these, 1,838,000 EPCs (10% of the total) covered **new** domestic properties (including new builds and conversions (Live Table NB1 and A1).

A total of 820,000 EPCs covering non-domestic properties and a total of 346,000 DECAs have been lodged on the Registers since 2008 (Live table DEC1 and A1).

All domestic properties

In the third quarter (June to September) of 2018, 361,000 EPCs were lodged on the Register covering all domestic properties (sales, lets and new dwellings). This represents an increase of 25% on the same quarter last year, when there were 288,000 lodgements.

In the 12 months ending September 2018, 1,278,000 EPCs were lodged, an increase of 1% on the previous 12 months (Live Table D1).

Existing and new domestic properties compared

In the third quarter of 2018, 301,000 EPCs for **existing** dwellings (for sales, lets and applications for energy efficiency programmes) were lodged on the Register, while 60,000 EPCs were lodged in England and Wales for **new** domestic properties (new builds, conversions and change of use). New domestic properties accounted for 17% of all domestic EPCs lodged during the third quarter of 2018 (Live Tables EB1, NB1 and A1).

Compared to the corresponding quarter in 2017, the number of EPCs lodged for existing dwellings has increased by 29%. This may reflect the new legislation requiring a minimum level of energy efficiency for private domestic rental properties¹, but may also be a reflection of the validity of EPCs being 10 years (existing EPCs may be renewed in 2018 when the dwelling is sold or let). In the last 12 months, 1,038,000 EPCs were lodged for existing dwellings, down by 1% on the previous year. This is the smallest annual total for existing dwellings since the statistical record began in 2008 (Live table EB1).

This contrasts with an increase of 10% in the number of EPCs lodged for new dwellings in the last

¹ Energy Efficiency (Private Rented Property) (England and Wales) Regulations 2015

quarter, compared to the equivalent quarter in 2017. In the year to September 2018, 240,000 EPCs for new domestic properties were lodged in England and Wales, up 9% on the previous year, and the largest annual total since the statistical record began (Live Table NB1). The increase in new properties is a reflection of changes in the housing market, with new dwellings forming a greater proportion of transactions at present than previously.

In England, 58,000 EPCs were lodged for new dwellings in the third quarter of 2018, which is an increase of 10% since the equivalent quarter last year. In Wales, 1,800 of these EPCs were lodged, an increase of 5% (Table NB1).

Table 1: Numbers of EPCs for new and existing dwellings, by England and Wales, Q3 2018							
Country	New dwellings			Existing dwellings			All dwelling totals
	Number	As proportion of total	Change since Q3 2017	Number	As proportion of total	Change since Q3 2017	Number
England	58,000	17%	10%	285,000	83%	29%	344,000
Wales	1,800	11%	5%	15,000	89%	28%	17,000

Source: Live Tables D1, EB1 and NB1

An EPC for domestic properties shows an energy efficiency rating based on estimated fuel costs and an environmental impact rating based on CO₂ emissions. Both measures are estimated from the characteristics of the property. The numerical ratings are then banded A to G, with A being the most energy efficient and G the least. In general, the higher the EER or EIR rating, the lower the fuel bills and CO₂ emissions are likely to be.

The distributions by rating band for existing and new domestic certificates lodged in the third quarter of 2018 are shown in Figures 1 and 2. For both the energy efficiency rating (based on fuel costs) and the environmental impact rating (based on carbon emissions) the greatest proportion of lodgements for existing domestic properties were band D rated. The equivalent graphs for new dwellings again show that new properties tend to be more energy efficient, with more rated B compared with existing domestic properties.

Figure 1: Energy efficiency ratings (EER) – existing and new domestic properties (Q3 2018)

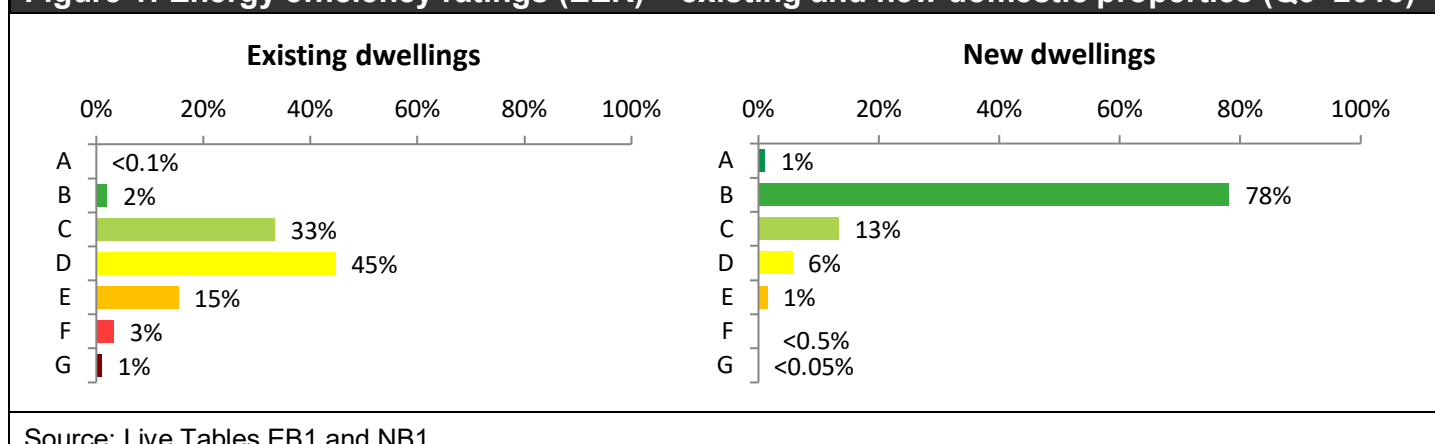
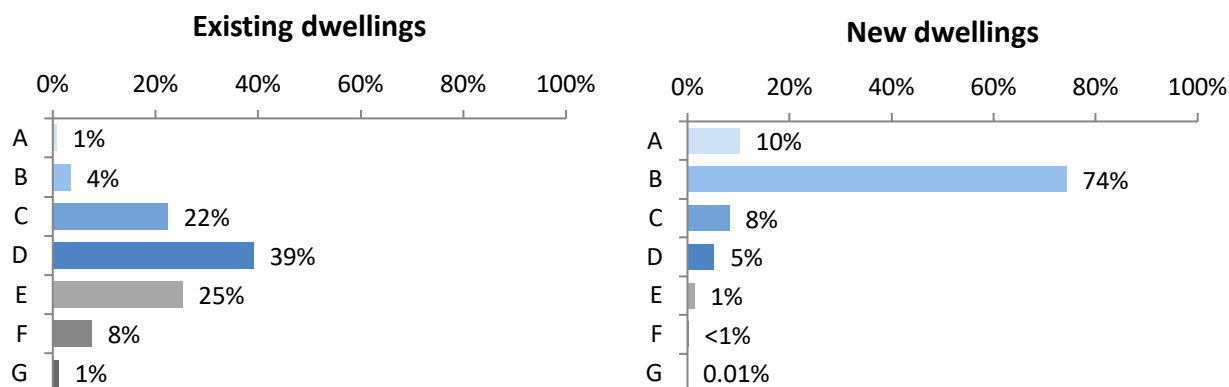


Figure 2: Environmental impact ratings (EIR) – existing and new domestic properties (Q3 2018)



Source: Table EB2 and NB2

The average values for a range of energy performance indicators for existing and new domestic properties are shown in Table 3. New properties tend to be more energy efficient. Being smaller, flats tend to produce fewer emissions and have lower lighting and heating costs than houses even though flats have a higher energy use per square metre.

Table 2: Mean floor area, energy use, CO₂ emissions and energy costs for existing and new domestic properties, third quarter of 2018

Property type	Energy Use (kWh/m ² per annum)	CO ₂ Emissions (tonnes per annum)	Lighting Costs (£ per annum)	Heating Costs (£ per annum)	Hot Water Costs (£ per annum)	Floor area (m ²)
Existing:						
Houses	269	4.87	91	812	138	103
Flats	284	2.58	59	419	142	56
<i>All existing dwellings</i>	277	4.13	80	686	139	87
New:						
Houses	87	1.69	72	296	94	115
Flats	134	1.25	47	218	122	60
<i>All new dwellings</i>	109	1.50	61	262	107	90

Source: Live Tables EB7 and NB7

Comparing the dwelling types on certificates for new and existing properties, a higher proportion of new dwellings were flats, and a lower proportion were houses, bungalows and maisonettes (Table2).

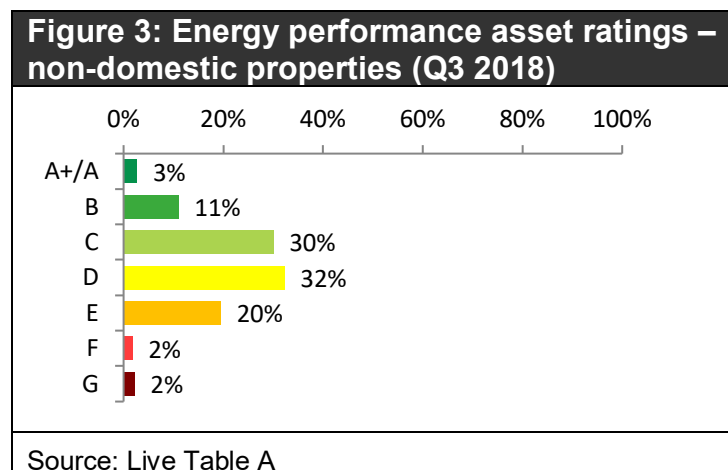
Property type	Houses	Flats	Bungalow	Maisonettes	Total
Existing	59%	28%	10%	3%	301,000
New	52%	44%	3%	1%	60,000

Source: Live Tables EB7 and NB7

Non-domestic properties

During the third quarter of 2018, 23,000 EPCs were lodged for non-domestic properties, an increase of 18% compared with the corresponding quarter in 2017. In the year ending September 2018, 90,000 non-domestic EPCs were lodged, an increase of 24% on the number lodged during the previous year (Live Table A). The large increase may reflect the 10 year validity of EPCs but may also reflect the new legislation requiring a minimum level of energy efficiency for private rental non-domestic properties.²

The distribution by EPC band is shown in Figure 3. Non-domestic buildings have an additional A+ band. The highest proportion of Certificates lodged (32%) were placed in band D.



² Energy Efficiency (Private Rented Property) (England and Wales) Regulations 2015

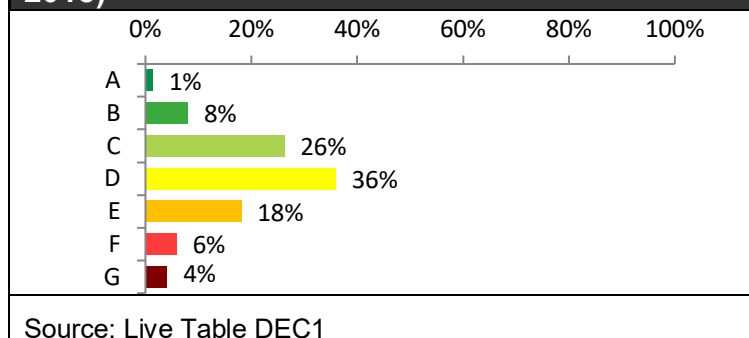
Display Energy Certificates (DECs)

Larger properties occupied by a public authority and frequently visited by the public must display a Display Energy Certificate (DEC). DECs show the actual energy consumption of a building and are accompanied by reports which provide recommendations on potential energy saving measures.

During the third quarter of 2018, 7,400 DECs were lodged relating to buildings in England and Wales, a decrease of 12 % compared with the corresponding quarter in 2017. Over the whole of the year ending September 2018, 35,100 DECs were lodged, representing a decrease of 2% compared with the previous year (Live Table DEC1).

The distribution of DECs by Energy Performance Operational Ratings is shown in Figure 4. The highest proportion of Certificates (36%) was in band D, whilst the lowest was in band A (1%).

Figure 4: Energy Performance Operational Ratings – Display Energy Certificates (Q3 2018)



Source: Live Table DEC1

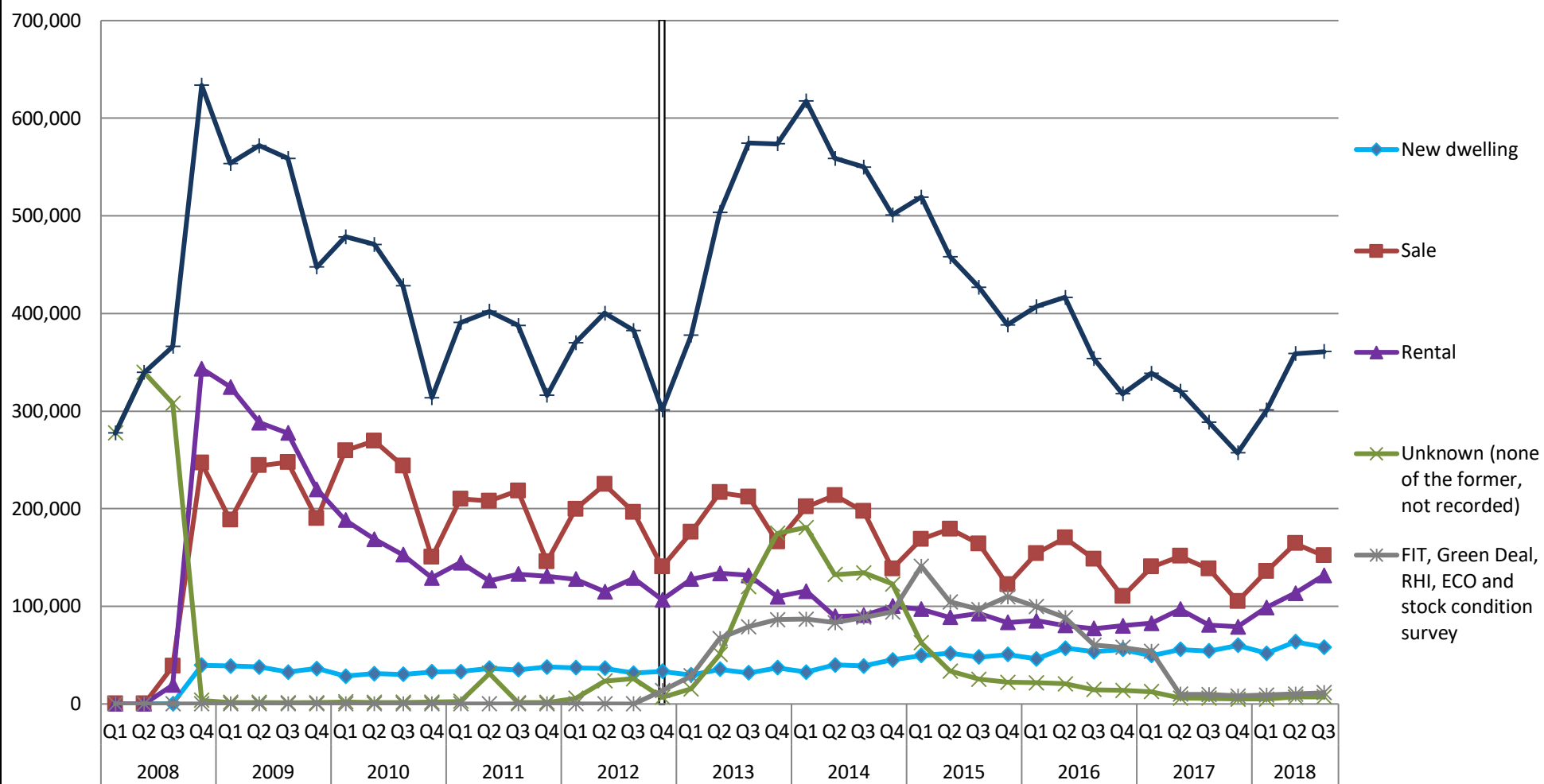
Transaction types for domestic dwellings

Figure 5 shows the number of domestic EPCs by transaction type, i.e. the reason for the EPC being lodged, as well as the total number. The transaction types have been grouped. For example lodgements for social and private rentals are grouped together, as are the various energy efficiency programmes and stock condition surveys.

The chart shows fluctuations in different transaction types based on the total number of EPCs lodged. For example, there is a seasonal pattern in when home sales take place with fewer at Christmas, which can be seen in the numbers of EPCs made for sales in Q4. This seasonality affects the total for EPCs, particularly up to the end of 2012. It also shows how the total number of EPCs was influenced by lodgements made for energy efficiency programmes and similar schemes, as well as lodgements for other, unknown reasons, particularly in 2013, 2014 and 2015. The volume of EPCs may also be affected by regulatory changes.

The decline in EPCs lodged for rentals after 2010 is likely to be linked to EPCs' 10 year validity period. We may be starting to see an increase in EPCs lodged for rental transactions, which could increase over the next couple of years as those EPCs issued in the early years of the scheme expire and need to be renewed when the dwelling is let to a new tenant.

Figure 5: Number of domestic EPCs lodged from 2008 to end of September 2018, by transaction type



Source: Live Table D4a and D4b. The categories collected changed in late 2012, leading to a break in the chart indicated by the line. They were also not recorded for part of 2008.

Accompanying tables

EPCs – All Properties (non-domestic and domestic)

Table A1 – Energy Performance Certificates for All Properties: Number of Energy Performance Certificates lodged on the Register and Total Floor Area by Type of Property – in each Year/Quarter.

EPCs – All Domestic Properties

Table D1 – Domestic Energy Performance Certificates for All Properties: Number of Domestic Energy Performance Certificates lodged on the Register by Energy Efficiency Rating – in each Year/Quarter.

Table D2 – Domestic Energy Performance Certificates for All Properties: Number of Domestic Energy Performance Certificates lodged on the Register by Environmental Impact Rating – in each Year/Quarter.

Table D3 – Domestic Energy Performance Certificates for All Properties: Floor Area, Size, Energy Use, Carbon Dioxide Emissions and Fuel Costs of Dwellings assessed and lodged on the Register - in each Year/Quarter.

Table D4a – Domestic Energy Performance Certificates for All Properties: Number of Domestic Energy Performance Certificates lodged on the Register by Type of Transaction – in each Year/Quarter – up to and including 30 September 2012.

Table D4b – Domestic Energy Performance Certificates for All Properties: Number of Domestic Energy Performance Certificates lodged on the Register by Type of Transaction – in each Year/Quarter – from 30 September 2012 to latest quarter.

Table D5 – Domestic Energy Performance Certificates for All Properties: Number of Domestic Energy Performance Certificates lodged on the Register by Type of Property by Energy Efficiency Rating – in each Year/Quarter.

Table D6 - Domestic Energy Performance Certificates for All Properties: Number of Domestic Energy Performance Certificates lodged on the Register by type of Property by Environmental Impact Rating – in each Year/Quarter.

Table D7 – Domestic Energy Performance Certificates for All Properties: Number of Domestic Energy Performance Certificates lodged on the Register by type of Property, and Average Energy Use, Carbon Dioxide Emissions and Fuel Costs per Dwelling – in each Year/Quarter.

Table LA1 – Domestic Energy Performance Certificates for All Properties: Number of Domestic Energy Performance Certificates lodged on the Register in each Local Authority by Energy Efficiency Rating – in each Year/Quarter.

Table LA2 – Domestic Energy Performance Certificates for All Properties: Number of Domestic Energy Performance Certificates lodged on the Register in each Local Authority by Environmental Impact Rating – in each Year/Quarter.

EPCs – All Existing Domestic Properties

Table EB1 – Domestic Energy Performance Certificates for Existing Properties: Number of Existing Domestic Properties Energy Performance Certificates lodged on the Register by Energy Efficiency Rating – in each Year/Quarter.

Table EB2 – Domestic Energy Performance Certificates for Existing Properties: Number of Existing Domestic Properties Energy Performance Certificate lodged on the Register by Environmental Impact Rating – in each Year/Quarter.

Table EB3 – Domestic Energy Performance Certificates for Existing Properties: Floor Area, Size, Energy Use, Carbon Dioxide Emissions and Fuel Costs of Existing Dwellings assessed - in each Year/Quarter.

Table EB4 – Domestic Energy Performance Certificates for Existing Properties: Number of Existing Domestic Properties Energy Performance Certificates lodged on the Register and Total Floor Area by type of Property – in each Year/Quarter.

Table EB5 – Domestic Energy Performance Certificates for Existing Properties: Number of Existing Domestic Properties Energy Performance Certificates lodged on the Register by type of Property and Energy Efficiency Rating – in each Year/Quarter.

Table EB6 - Domestic Energy Performance Certificates for Existing Properties: Number of Existing Dwelling Energy Performance Certificates lodged on the Register in England & Wales, by Type of Property, by Environmental Impact Rating – in each Year / Quarter.

Table EB7 – Domestic Energy Performance Certificates for Existing Properties: Number of Existing Domestic Properties Energy Performance Certificates lodged on the Register by Type of Property, and Average Energy Use, Carbon Dioxide Emissions and Fuel Costs per dwelling – in each Year/Quarter.

EPCs – All New Domestic Properties

Table NB1 – Domestic Energy Performance Certificates for New Properties: Number of New Domestic Properties Energy Performance Certificates lodged on the Register by Energy Efficiency Rating – in each Year/Quarter.

Table NB2 – Domestic Energy Performance Certificates for New Properties: Number of New Domestic Properties Energy Performance Certificate lodged on the Register by Environmental Impact Rating – in each Year/Quarter.

Table NB3 – Domestic Energy Performance Certificates for New Properties: Floor Area, Size, Energy Use, Carbon Dioxide Emissions and Fuel Costs of New Dwellings assessed - in each Year/Quarter.

Table NB4 – Domestic Energy Performance Certificates for New Properties: Number of New Domestic Properties Energy Performance Certificates lodged on the Register and Total Floor Area by type of Property – in each Year/Quarter.

Table NB5 – Domestic Energy Performance Certificates for New Properties: Number of New Domestic Properties Energy Performance Certificates lodged on the Register by type of Property and Energy Efficiency Rating – in each Year/Quarter.

Table NB6 - Domestic Energy Performance Certificates for New Properties: Number of New Dwelling Energy Performance Certificates lodged on the Register in England & Wales, by Type of Property, by Environmental Impact Rating – in each Year / Quarter.

Table NB7 – Domestic Energy Performance Certificates for New Properties: Number of New Domestic Properties Energy Performance Certificates lodged on the Register by Type of Property, and Average Energy Use, Carbon Dioxide Emissions and Fuel Costs per dwelling – in each Year/Quarter.

EPCs – Non-Domestic Properties

Table A – Non Domestic Energy Performance Certificates for All Properties: Number of Non-Domestic Energy Performance Certificates lodged on the Register by Energy Performance Asset Rating - in each Year/Quarter.

Table B – Non Domestic Energy Performance Certificates for All Properties: Number of Non-Domestic Energy Performance Certificates lodged on the Register by Property Group - in each Year/Quarter.

DECs

Table DEC1 – Display Energy Certificates: Number of Display Energy Certificates lodged on the Register by Local Authority and Energy Performance Operational Rating - in each Year/Quarter.

Table DEC2 – Display Energy Certificates: Annual Energy Use and Carbon Dioxide Emissions of Buildings Assessed – in each Year/Quarter.

These tables can be accessed at:

<https://www.gov.uk/government/statistical-data-sets/live-tables-on-energy-performance-of-buildings-certificates>

Previous MHCLG statistical releases are available at:

<https://www.gov.uk/government/collections/energy-performance-of-buildings-certificates>

Definitions

For full details on how the requirements of the Energy Performance of Buildings Directive are applied to domestic and non-domestic buildings and buildings occupied by public authorities, users should consult the Energy Performance Certificates guidance collection on GOV.UK:

<http://www.gov.uk/government/publications/improving-the-energy-efficiency-of-our-buildings>

A consolidated glossary of all the terms related to energy performance of buildings certificates can be accessed on GOV.UK:

<http://www.gov.uk/government/collections/energy-performance-of-buildings-certificates>

Technical notes

Data collection

Data lodged on the Registers record information about the certificates issued for buildings which have been newly constructed, sold or let since 2008. Data lodged in relation to buildings occupied by public authorities over 1,000 square metres also date back to 2008. The floor area size threshold was changed to include buildings over 500 square metres in January 2013. In July 2015 the floor area size threshold was lowered to include buildings over 250 square metres. These statistics do not, therefore, represent the entire building stock in England and Wales.

Coverage

The Registers do not hold data for every domestic and non-domestic building or every building occupied by public authorities in England and Wales. These statistics should, therefore, not be interpreted as a true representation of the whole of the building stock in England and Wales, but viewed as part of a wider package of Government's provision of information on the energy efficiency of buildings.

Periodicity

The release covers certificates lodged between Q1 2008 and Q3 2018 and breaks the data down for each specified calendar quarter (Q1=Jan-Mar, Q2=Apr-Jun, Q3=Jul-Sep, Q4=Oct-Dec) within each specified calendar year.

New build vs new dwellings

If works are carried out to create a new building(s), either by means of new build or by conversion of an existing building (for example, subdivision of an existing building into flats or change of use of an office), the builder or person responsible for the construction must obtain an EPC once construction has been completed. This will also apply if a building is converted into fewer or more units designed for separate occupation and there are changes to the heating, hot water provision or air conditioning/ventilation services.

Park Homes

This category of property means a caravan within the meaning of Part 1 of the Caravan Sites and Control of Development Act 1960 which is situated on a relevant protected site and which is occupied by the occupier as their only or main residence. EPCs for park homes have been lodged on the domestic Register from December 2014.

Multiple certificates

The statistical counts in the tables cover all valid EPCs and DECAs (i.e. only those lodged on the Registers where there are no doubts about their status) although individual buildings may have more than one certificate. EPCs are valid for up to 10 years. Depending on the size of the building, a new DEC may be issued annually. Data are kept on the Registers for 20 years; therefore, more than one EPC or DEC may be stored over a number of years for one building. While it is possible to identify the most recent certificate at property level, this duplication is not distinguishable from high-level statistics.

Data quality

These are experimental official statistics drawn from data which have been lodged on the Registers. Experimental official statistics are, by definition, still subject to evaluation and testing and may not meet the same rigorous quality standards as official statistics generally. In spite of any data quality variances which may exist, we are publishing these statistics because we believe them to be of immediate value and we welcome feedback from interested parties to aid their development.

These statistics are in the development stage and we are still refining the data search criteria we use. This process is aimed at producing more accurate statistics.

In accordance with the regulations, the Ministry of Housing, Communities and Local Government and Landmark Information Group cannot alter data which has been lodged on the Registers.

Data used to produce these published tables is updated every 24 hours and can, therefore, vary from day to day. To ensure consistency between the information detailed in separate tables the published tables are produced on the same day. Exceptionally, data between tables may vary marginally where we are required to use tables drawn down on different days or where reports are produced using different search criteria.

Originally, Energy Assessor Accreditation Schemes had the option of lodging the underlying data used to produce the certificate in addition to the PDF document of the final certificate itself. After September 2008, lodging the data became a mandatory requirement. Due to the technical difficulty involved in formatting PDFs into searchable data, the statistics do not include data lodged in the form of a PDF document only.

In May 2009, additional validation checks were introduced into the lodgement process to identify prescribed data quality issues. Before this period, statistics for domestic buildings may include anomalies which affect the quality of reported CO₂ emission rates. In addition, statistics for domestic and non-domestic buildings and for DEC's may include anomalies which affect total useful floor area figures.

On 1 April 2012, the first set of Scheme Operating Requirements came into effect for Domestic Energy Assessors, setting new rules for the operation of Energy Assessor Accreditation Schemes. One new requirement was to introduce quality assurance audit of EPCs. The result was a demonstrable improvement in the quality of data lodged on the Registers from mid-2012 onwards. Users are asked to consider this when interpreting figures prior to that period.

Fourth quarter statistics from 2014 onwards includes statistics for EPC lodged for properties defined as Park Homes.

Revisions policy

This policy has been developed in accordance with the UK Statistics Authority's *Code of Practice for Statistics* and the Department's own Revisions Policy (found at <https://www.gov.uk/government/publications/statistical-notice-dclg-revisions-policy>).

That policy covers two types of revision:

Non-Scheduled Revisions

Where a substantial error has occurred as a result of the compilation, imputation or dissemination process, the statistical release, live tables and other accompanying releases will be updated with a correction notice as soon as is practical.

Scheduled Revisions

MHCLG and Landmark do not alter the source data for these releases. The next quarterly release will include new certificates and any changes to existing ones (e.g. cancellations).

Uses of the data

The Energy Performance of Buildings Certificates statistical series is an important part of the evidence base which informs the development and evaluation of housing, energy and climate change policy by central and local government. An EPC is required for all properties when constructed, sold or let and this data source provides the most comprehensive evidence of energy efficiency and property attributes in buildings, which is widely used by housing market and energy analysts, environmental modellers, forecasters and decision makers, for example in the construction industry. They are used by the media in reports on the housing market, energy and climate change and by academics both in the UK and abroad. The statistics are also used for market research by a wide range of other businesses.

User engagement

Users are encouraged to provide feedback on how these statistics are used and how well they meet user needs. Comments on any issues relating to this statistical release are welcomed and encouraged. Responses should be addressed to the "Public enquiries" contact given in the "Enquiries" section below.

The Department's engagement strategy to meet the needs of statistics users is published here: <https://www.gov.uk/government/publications/engagement-strategy-to-meet-the-needs-of-statistics-users>

Notes

1-These experimental official statistics based on EPCs and DECAs are estimates and are provisional and subject to revision.

2-Throughout this commentary the statistics on lodgements have been quoted to the nearest thousand for EPCs and the nearest hundred for DECAs. Percentage changes have been calculated using unrounded figures.

3-Sources are shown at the foot of individual accompanying tables and live tables.

4-Experimental Statistics are defined in the *Code of Practice for Statistics* as new official statistics undergoing evaluation. They are published in order to involve users and stakeholders in their development and as means to build in quality at an early stage.

5-Details of the Ministers and officials who receive pre-release access to this release up to 24 hours before publication can be found at: <https://www.gov.uk/government/organisations/ministry-of-housing-communities-and-local-government/about/statistics>

6-The next quarterly release will be published on 30th January 2019, and will provide estimates up to the end of the fourth quarter of 2018.

Devolved administration statistics

The requirement on domestic and non-domestic properties to have an EPC on construction, sale or let and for buildings occupied by public authorities to have a DEC are devolved matters in Scotland and Northern Ireland. Further information can be found on Devolved Administration websites:

Scottish Government:

<http://www.gov.scot/Topics/Built-Environment/Building/Building-standards/enerperfor>

Department of Finance, Northern Ireland:

<https://www.finance-ni.gov.uk/topics/building-regulations-and-energy-efficiency-buildings/energy-performance-buildings>

Enquiries

Media enquiries:

Office hours: 0303 444 1209

Email: newsdesk@communities.gov.uk

Public enquiries and Responsible Statistician:

Anna Carlsson-Hyslop

Email: EPBStats@communities.gov.uk

Information on forthcoming Official Statistics is available via the 'gov.uk' Release Calendar:

<https://www.gov.uk/government/statistics/announcements>

Information about statistics at MHCLG is available via the Department's website:

<https://www.gov.uk/government/organisations/ministry-of-housing-communities-and-local-government/about/statistics>

© Crown copyright, 2018

Copyright in the typographical arrangement rests with the Crown.

You may re-use this information (not including logos) free of charge in any format or medium, under the terms of the Open Government Licence. To view this licence, www.nationalarchives.gov.uk/doc/open-government-licence/ or write to the Information Policy Team, The National Archives, Kew, London TW9 4DU, or email: psi@nationalarchives.gov.uk.

This document/publication is also available on our website at <http://www.gov.uk/mhclg>

If you have any enquiries regarding this document/publication, complete the form at <http://forms.communities.gov.uk/> or write to us at:

Ministry of Housing, Communities and Local Government
Fry Building
2 Marsham Street
London
SW1P 4DF
Telephone: 030 3444 0000

October 2018

For all our latest news and updates follow us on Twitter: <https://twitter.com/mhclg>

ISBN: 978-1-4098-5345-9