



11 September 2018

Year: 2018

Week: 36

In This Issue:

- Key messages.
- Syndromic indicators at a glance.
- Data summary.
- Indicators by syndrome.
- Total calls.
- Cold/flu.
- Fever.
- Cough.
- Difficulty Breathing.
- Sore throat.
- Diarrhoea.
- Vomiting.
- Eye problems.
- Heat/sun impact.
- Insect bites.
- Introduction to charts.
- Notes and further information.
- Acknowledgements.

Key messages

Data to: 09 September 2018

Difficulty breathing calls continued to increase in week 36 in line with seasonal expectations (figure 5); increases were particularly noted in the under 5 years age groups (figure 5a).

A Heat-Health Watch system operates in England from 1 June to 15 September each year. As part of the Heatwave Plan for England, the PHE Real-time Syndromic Surveillance team will be routinely monitoring the public health impact of hot weather using syndromic surveillance data during this period.

Heat-health watch level (current reporting week): Level 1 **Summer preparedness**
<http://www.metoffice.gov.uk/weather/uk/heathealth/>

Syndromic indicators at a glance:

Indicator	Trend	Level *
Cold/flu	increasing	similar to baseline levels
Fever	decreasing	below baseline levels
Cough	increasing	below baseline levels
Difficulty breathing	increasing	below baseline levels
Sore throat	no trend	below baseline levels
Diarrhoea	no trend	below baseline levels
Vomiting	no trend	below baseline levels
Eye problems	no trend	below baseline levels
Heat/sun impact	no trend	similar to baseline levels
Insect bites	no trend	similar to baseline levels

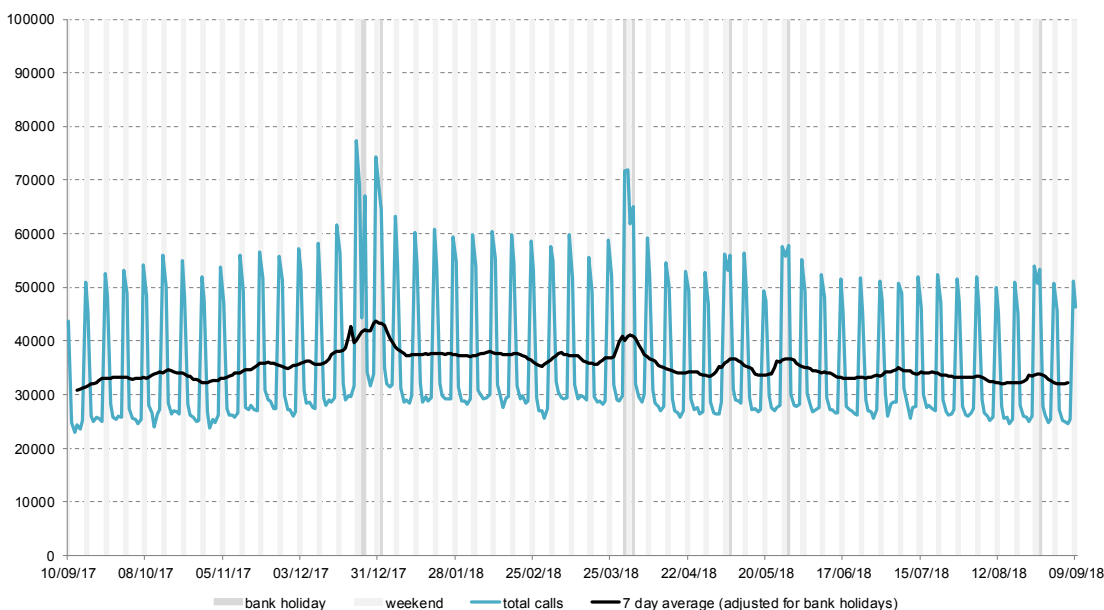
*Since week 47 2014 new baselines have been introduced for comparison with previous years.

Data summary:

Year	Week	Total calls
2018	36	197,840

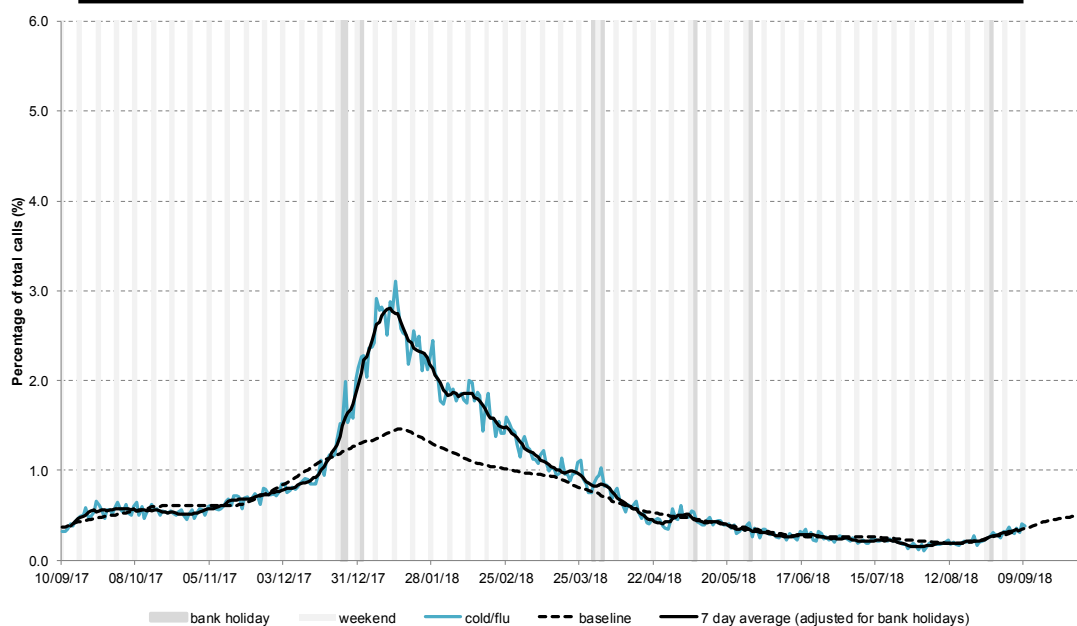
1: Total calls.

The total number of syndromic calls recorded each day by NHS 111.



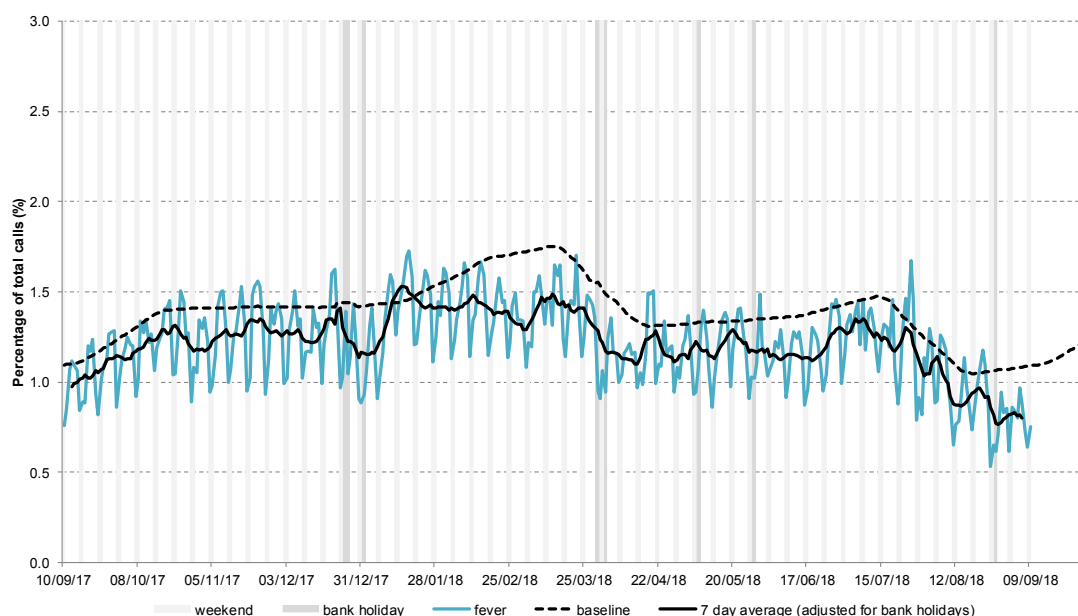
2: Cold/flu

Daily 'cold/flu' calls as a percentage of total calls. Baselines are constructed from historical data since 2013.



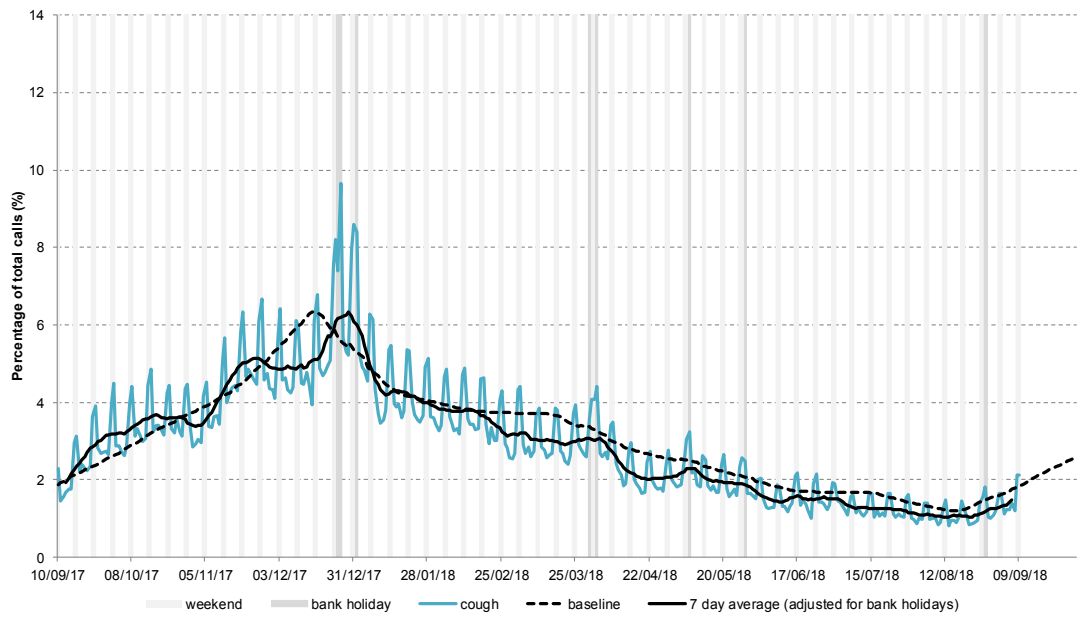
3: Fever

Daily 'fever' calls as a percentage of total calls. Baselines are constructed from historical data since 2013.



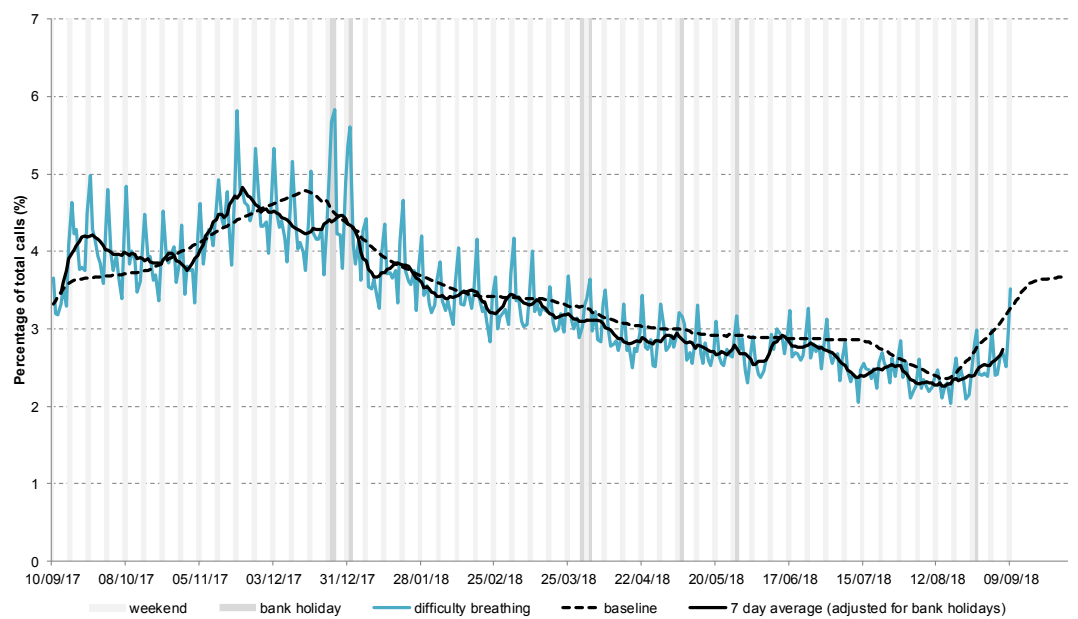
4: Cough

Daily 'cough' calls as a percentage of total calls. Baselines are constructed from historical data since 2010, including data from NHS 111 and NHS Direct.



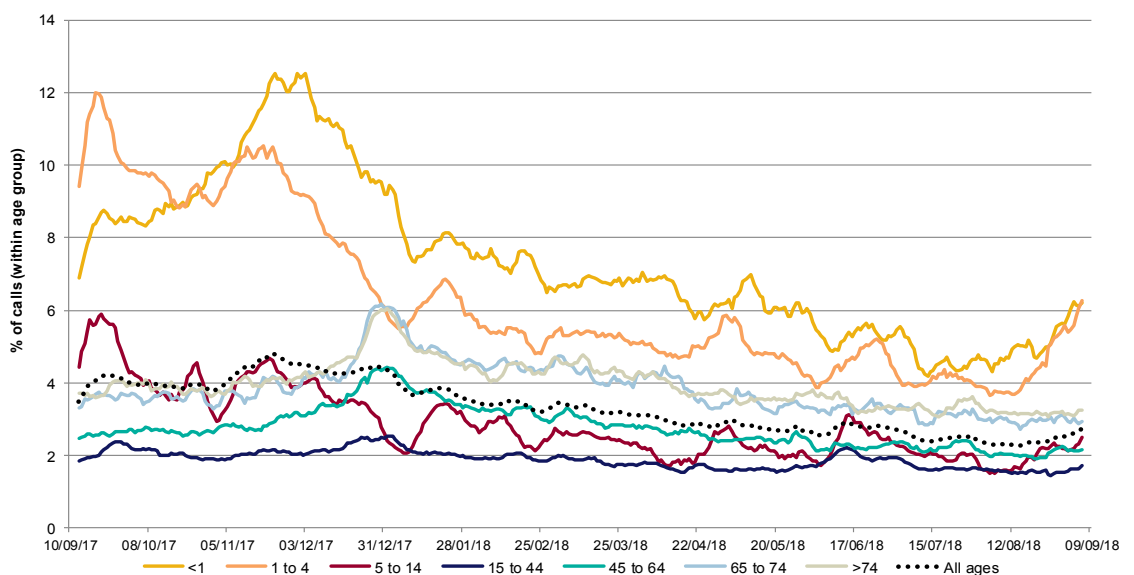
5: Difficulty breathing

Daily 'difficulty breathing' calls as a percentage of total calls. Baselines are constructed from historical data since 2013.



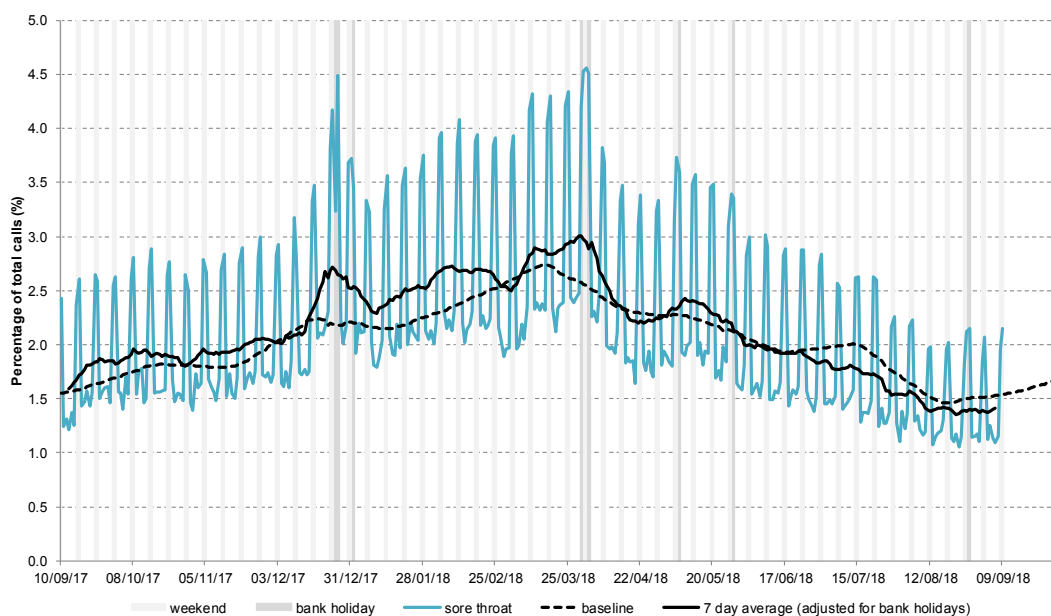
5a: Difficulty breathing calls by age group

Difficulty breathing calls as a percentage of total calls within each age group, shown as a 7 day moving average adjusted for bank holidays.



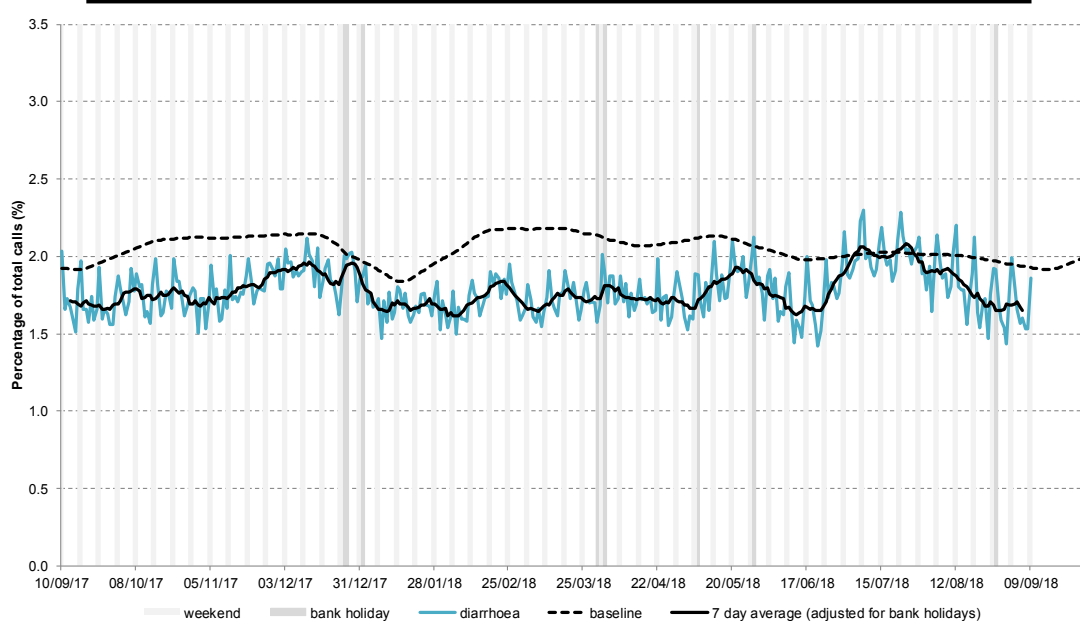
6: Sore throat

Daily 'sore throat' calls as a percentage of total calls. Baselines are constructed from historical data since 2013.



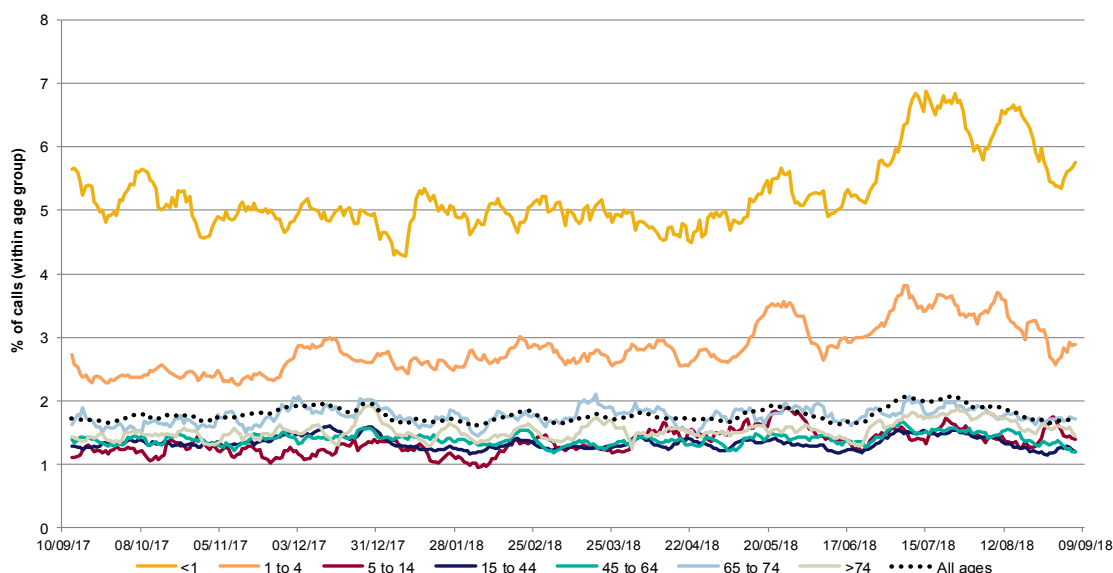
7. Diarrhoea

Daily 'diarrhoea' calls as a percentage of total calls. Baselines are constructed from historical data since 2013.



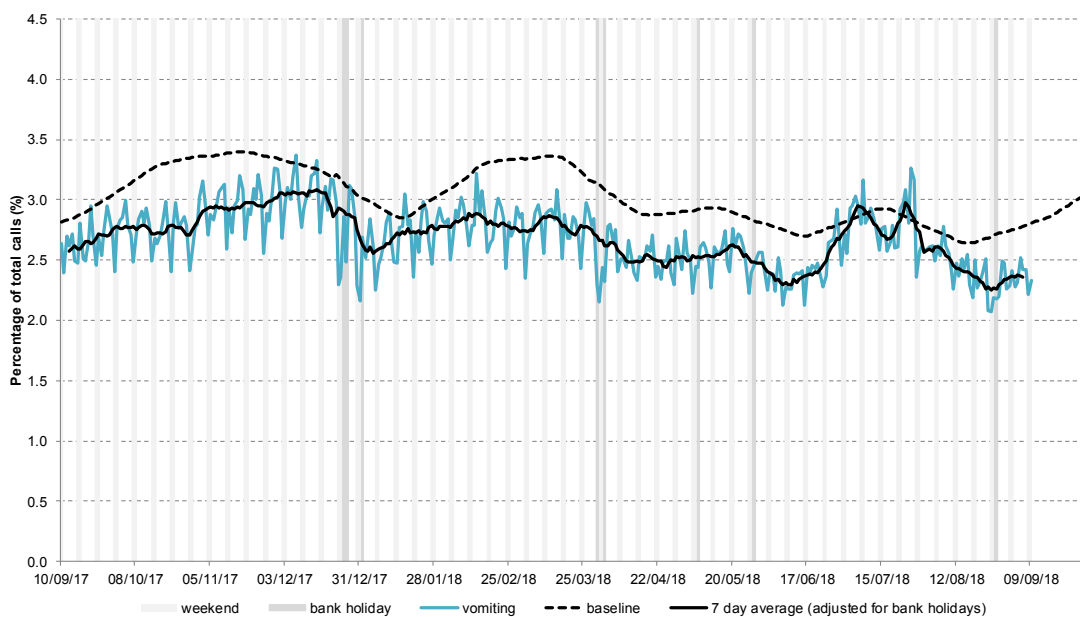
7a: Diarrhoea calls by age group

Diarrhoea calls as a percentage of total calls within each age group, shown as a 7 day moving average adjusted for bank holidays.



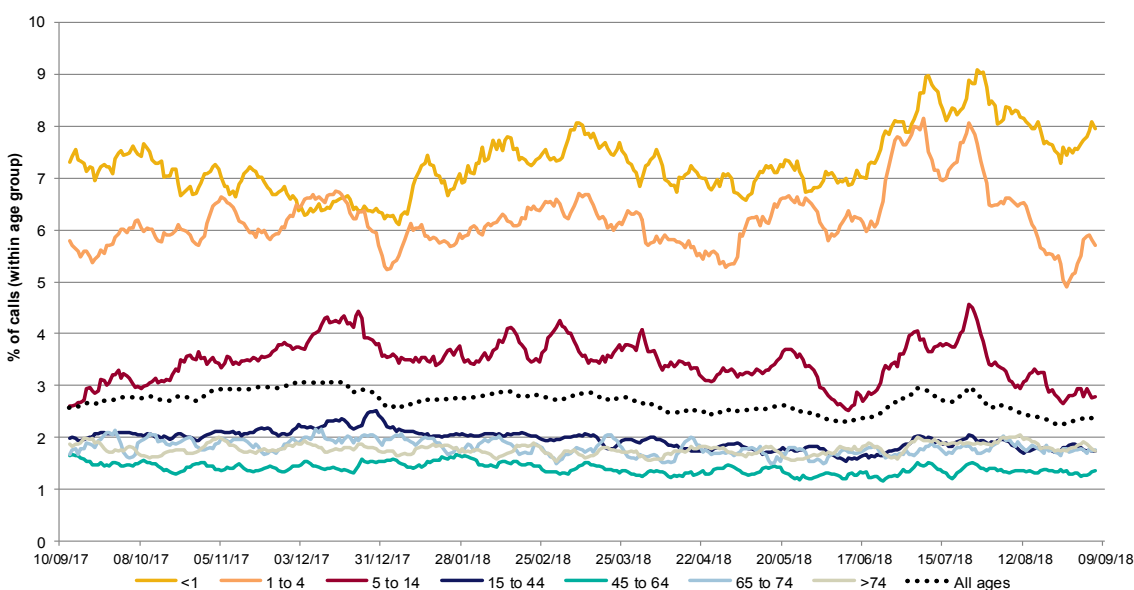
8: Vomiting

Daily 'vomiting' calls as a percentage of total calls. Baselines are constructed from historical data since 2013.



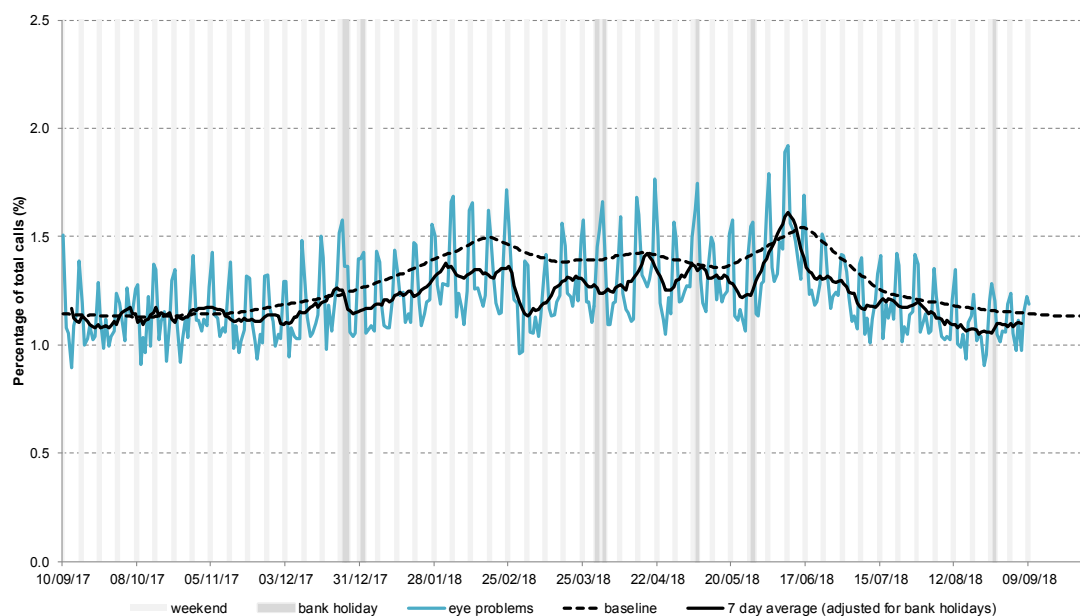
8a: Vomiting calls by age group

Vomiting calls as a percentage of total calls within each age group, shown as a 7 day moving average adjusted for bank holidays.



9: Eye problems

Daily 'eye problems' calls as a percentage of total calls. Baselines are constructed from historical data since 2013.



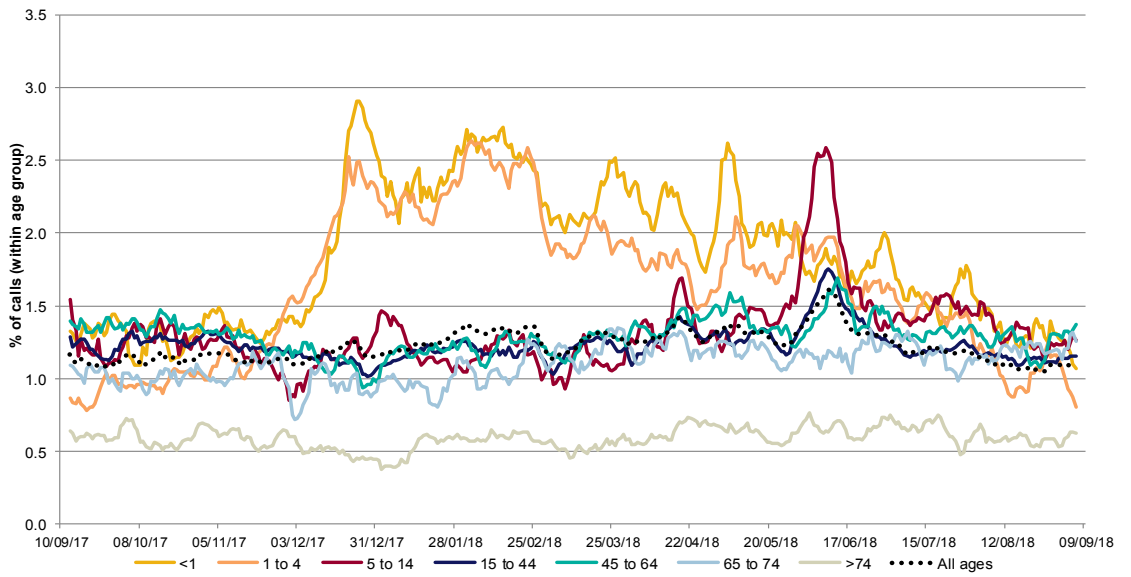
11 September 2018

Year: 2018

Week: 36

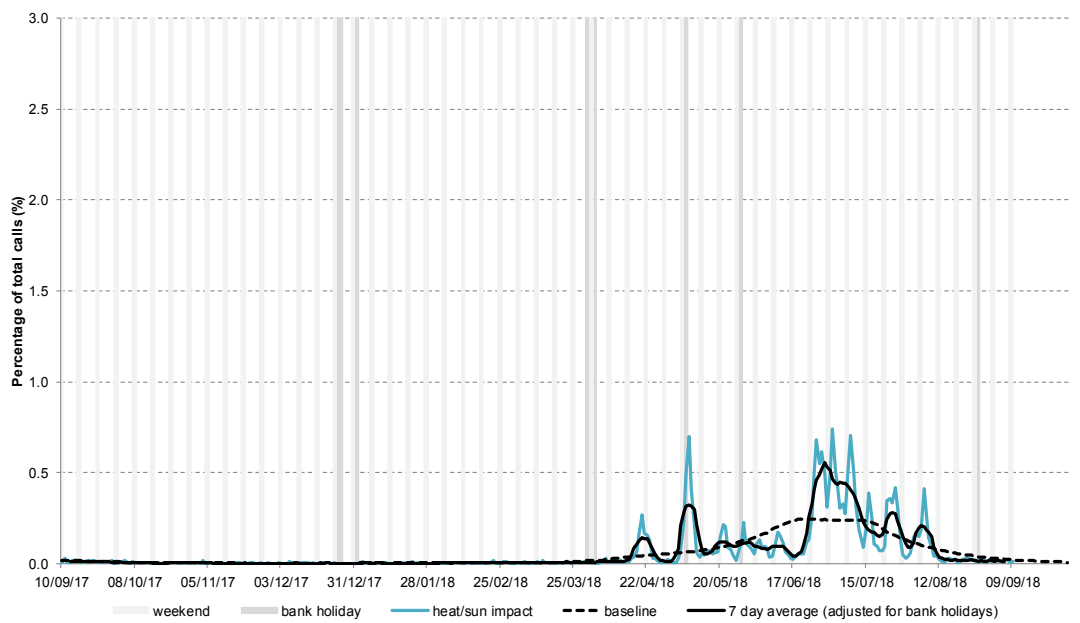
9a: Eye problems by age group

Eye problems calls as a percentage of total calls within each age group, shown as a 7 day moving average adjusted for bank holidays.



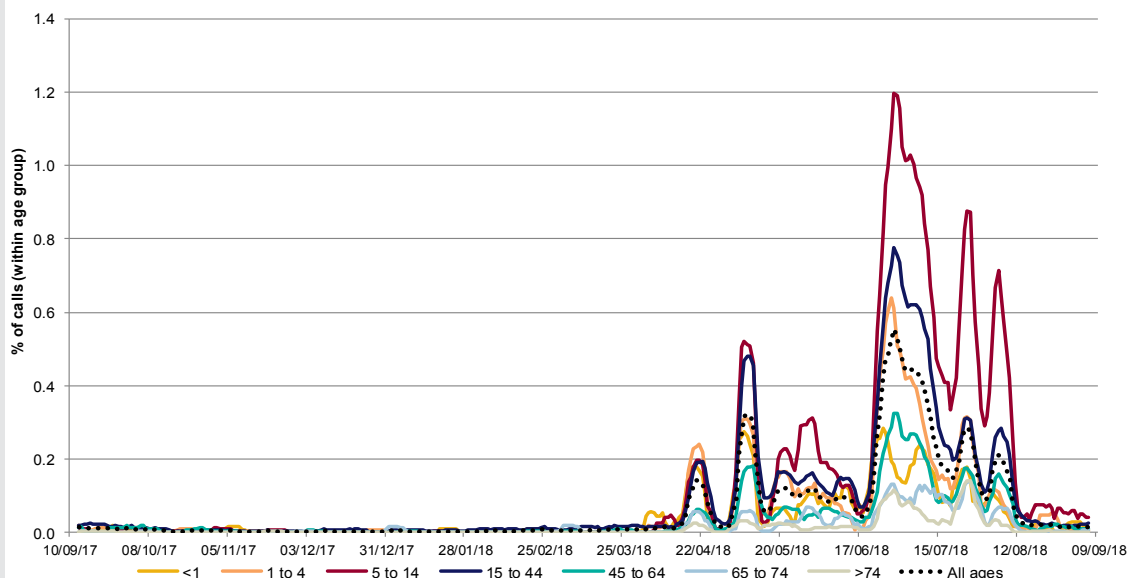
10: Heat/sun impact calls

Daily 'heat/sun impact' calls as a percentage of total calls. Baselines are constructed from historical data since 2013.



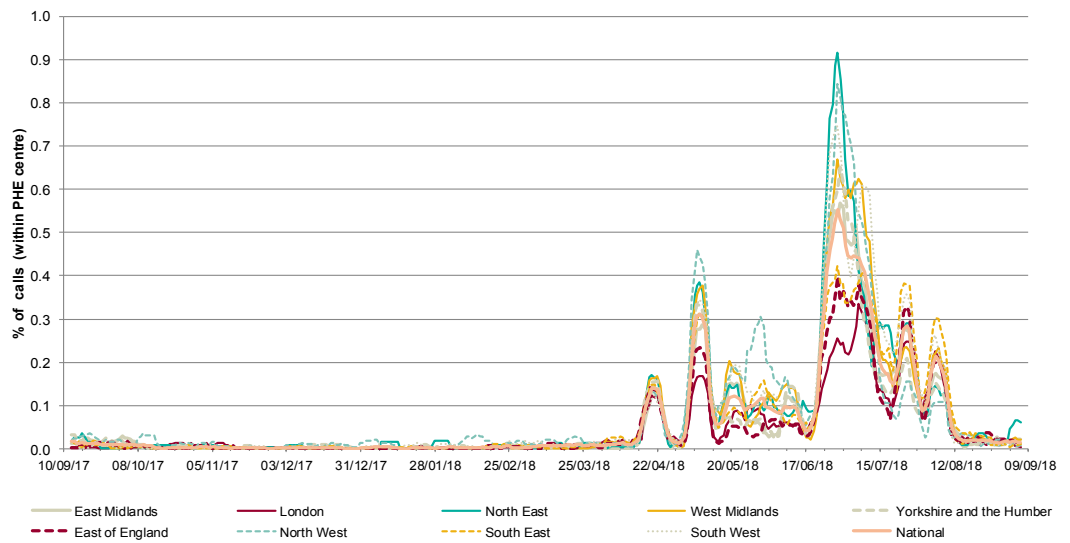
10a: Heat/sun impact calls by age group

'Heat/sun impact' calls as a percentage of total calls within each age group, shown as a 7 day moving average adjusted for bank holidays.



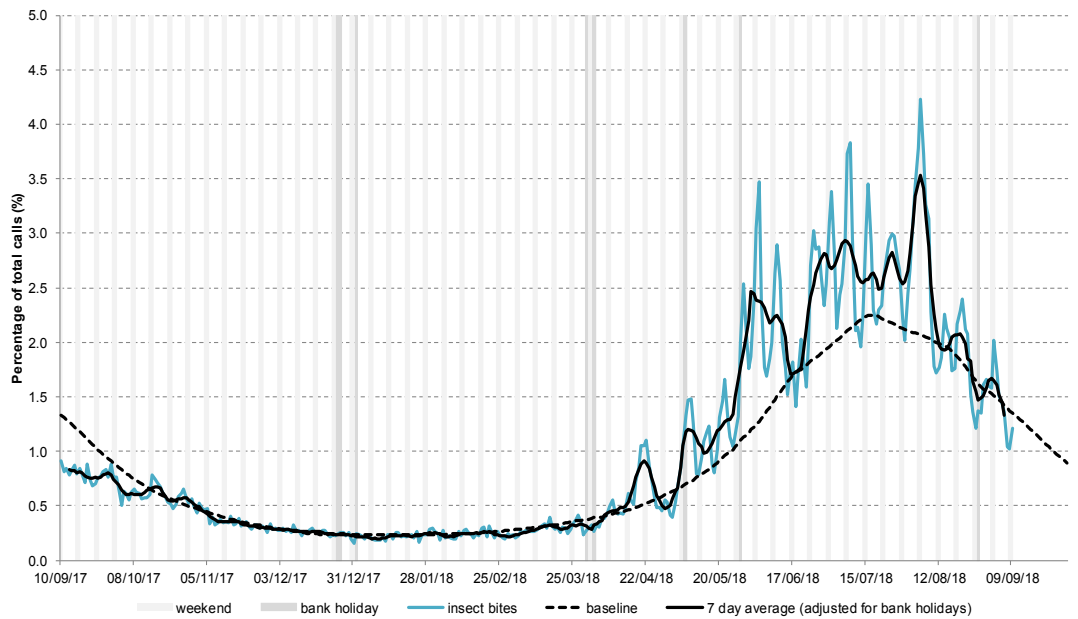
10b: Heat/sun impact calls by PHE centre

'Heat/sun impact' calls as a percentage of total calls within each PHE centre, shown as a 7 day moving average adjusted for bank holidays.



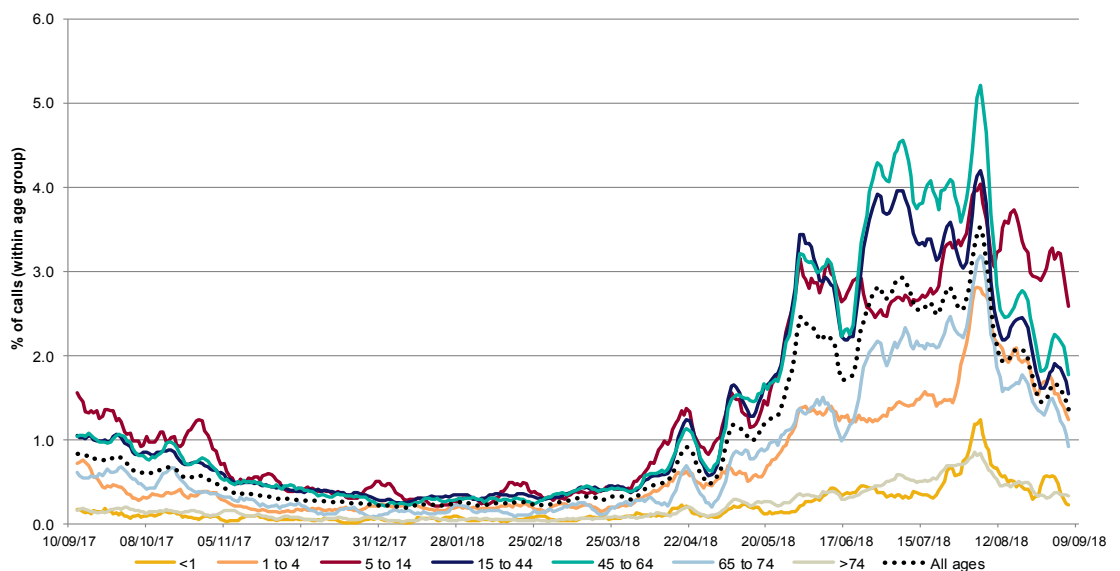
11: Insect bite calls

Daily insect bite calls as a percentage of total calls. Baselines are constructed from historical data since 2013.



11a: Insect bites by age group

Insect bite calls as a percentage of total calls within each age group, shown as a 7 day moving average adjusted for bank holidays.



Introduction to charts:

- Weekends and bank holidays are marked by vertical **grey** lines (bank holidays **darker grey**).
- A 7-day moving average (adjusted for bank holidays) is overlaid on the daily data reported in each chart, unless specified.
- Baselines represent seasonally expected levels of activity and are constructed from historical data since September 2013. They take into account any known substantial changes in data collection, population coverage or reporting practices. Baselines are refreshed using the latest data on a regular basis.
- NHS 111 call data are analysed on a daily basis to identify national and regional trends. A statistical algorithm underpins each system, routinely identifying activity that has increased significantly or is statistically significantly high for the time of year. Results from these daily analyses are assessed by the ReSST, along with analysis by age group, and anything deemed of public health importance is alerted by the team.

Notes and further information:

Further information about NHS 111 can be found at:

<http://www.nhs.uk/NHSEngland/AboutNHSservices/Emergencyandurgentcareservices/Pages/NHS-111.aspx>

The Remote Health Advice Syndromic Surveillance bulletin can also be downloaded from the PHE Real-time Syndromic Surveillance website which also contains more information about syndromic surveillance:

<https://www.gov.uk/government/collections/syndromic-surveillance-systems-and-analyses>

Acknowledgements:

We are grateful to NHS 111 and to NHS Digital for their assistance and support in providing the anonymised call data that underpin the Remote Health Advice Syndromic Surveillance System.

Remote Health Advice Syndromic Surveillance System Bulletin.

Produced by: PHE Real-time Syndromic Surveillance Team
1st Floor, 5 St Philip's Place, Birmingham, B3 2PW

Tel: 0344 225 3560 > Option 4 > Option 2

Fax: 0121 236 2215

Web: <https://www.gov.uk/government/collections/syndromic-surveillance-systems-and-analyses>