



National flu programme 2018 to 2019

In 2018/19 the following patients and children are eligible for flu vaccination:

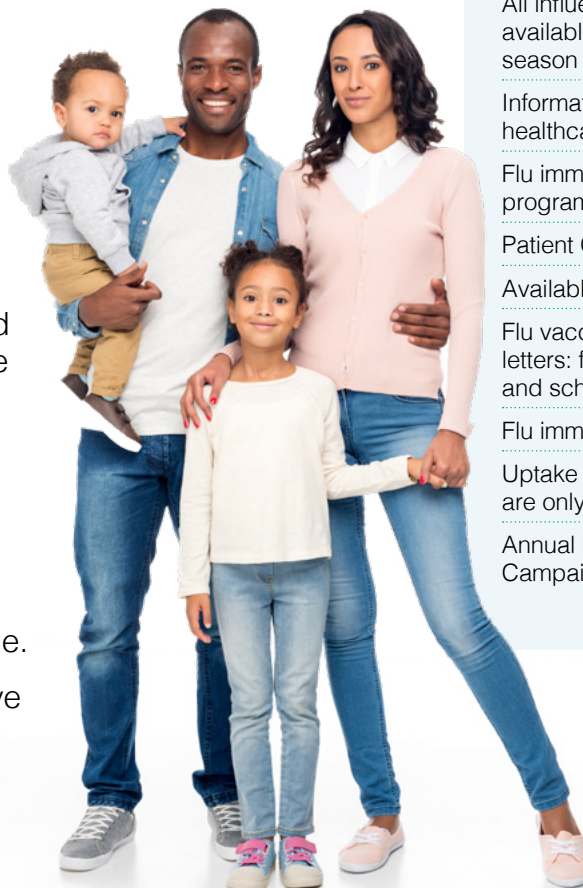
- all children aged two to nine (but not ten years or older) on 31 August 2018
- all primary school-aged children in former primary school pilot areas
- those aged six months to under 65 years in clinical risk groups
- pregnant women
- those aged 65 years and over
- those in long-stay residential care homes
- carers

Further details about programme can be found in the first flu letter published in March, see [weblink 1](#).

Vaccination is also recommended for frontline health and social care workers. Further details will be published about the programme for them in early September.

Last season's higher level of flu activity is an important reminder that flu can have a significant impact and is highly unpredictable.

We should strive to further improve vaccine uptake rates in all eligible cohorts this year.



CONTENTS

[Which flu vaccine to give?](#)

[NICE Guidelines: "Flu vaccination: increasing uptake"](#)

[Green Book revised chapter on flu](#)

[Flu vaccine ordering for the 2018-19 children's programme](#)

[Reduction in over ordering of LAIV \(Fluenz Tetra®\) for the children's national flu vaccination programme](#)

[All influenza vaccines available in the UK for 2018/19 season](#)

[Information and training for healthcare practitioners](#)

[Flu immunisation e-learning programme!](#)

[Patient Group Direction \(PGD\)](#)

[Available to download](#)

[Flu vaccination invitation letters: for general practice and schools](#)

[Flu immunisation consent form](#)

[Uptake Summary Tool – we are only as good as our data!](#)

[Annual Flu Marketing Campaign Stay well this winter](#)

Which flu vaccine to give?

This year, three types of flu vaccine will be used in the flu programme.

This will benefit patients by ensuring that they have the most suitable vaccine that gives them the best protection against flu. The three vaccines are:

- **Adjuvanted trivalent flu vaccine (aTIV)** – This is licensed for people aged 65 years and over and is the vaccine recommended by the Joint Committee on Vaccination and Immunisations (JCVI) for this age group.
- **Quadrivalent vaccine (QIV)** – This is recommended for children aged from 6 months to 2 years and in adults from 18 years to less than 65 years of age who are at increased risk from flu because of a long term health condition.
- **Live attenuated influenza vaccine (LAIV)** – This is a nasal spray and is licensed for children and young people from 2 years old to less than 18 years of age. The age groups targeted in England for this vaccine in 2018/19 are two and three year olds (through their GP surgery) and school aged children in reception class through to Year 5 (through schools). If LAIV is clinically contraindicated QIV is used in this age group. Both are procured centrally by PHE and can be ordered via ImmForm.

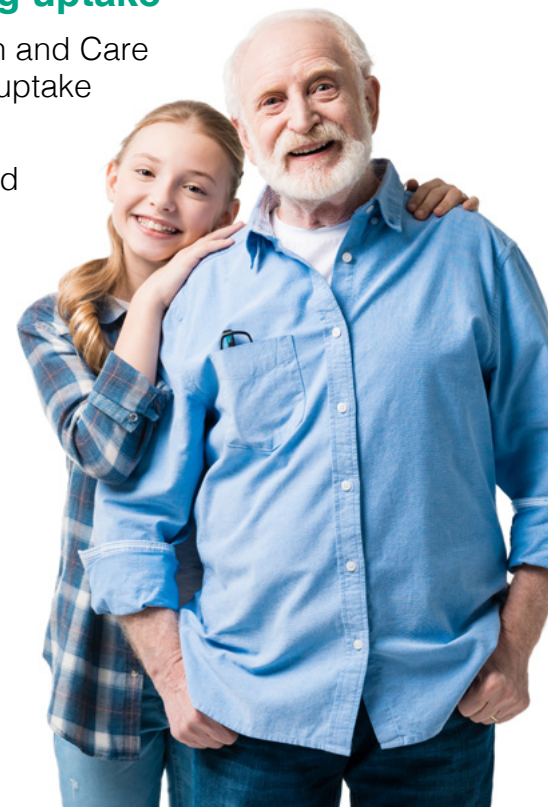
General practices and community pharmacies are responsible for ordering flu vaccines for the adult programme directly from manufacturers. As the deliveries of aTIV will be staged between September and early November, NHS England have issued “Flu Vaccination Programme Delivery Guidance” to help practices and pharmacies plan the vaccination programme around this phased delivery, see [weblink 2](#).

NICE Guidelines: “Flu vaccination: increasing uptake”

We encourage you to look at the National Institute for Health and Care Excellence (NICE) guidelines on increasing flu vaccination uptake which were published on 22 August, [see weblink 3](#).

The guidance is intended for providers of flu vaccination and gives recommendations on how to increase uptake in:

- clinical risk groups (aged 6 months to 64 years)
- pregnant women
- carers
- health and social care workers



Green Book revised chapter on flu

The updated Green Book Influenza chapter has recently been republished.

It contains important new information on administration of flu vaccine.

See [weblink 4](#).



Availability of centrally supplied flu vaccines for the children's flu programme

As in previous years, PHE has centrally procured flu vaccine for children included in this year's flu programme, including those aged from six months to less than 18 years old in clinical risk groups. It remains the responsibility of GPs and other providers to order sufficient flu vaccine directly from manufacturers for older eligible patients of the flu programme in 2018-19.

The following vaccines will be available to providers of the children's flu programme in England via the ImmForm website. Further details on the timing of availability of vaccines will be published as information becomes available.

Please refer to guidance from your respective health departments for arrangements in Scotland, Wales and Northern Ireland.

Vaccine	Manufacturer	Anticipated ImmForm order opening
Fluenz Tetra® (LAIV)	AstraZeneca UK Ltd	Late September/early October
Quadrivalent Influenza Vaccine (split virion, inactivated)	Sanofi Pasteur	September

Eligibility and the type of vaccine to offer children from six months to less than 18 years is as follows:

Age on 31 August 2018	Is child eligible for LAIV?	Setting
Under 2 years of age	<p>Universal programme: No. Only at risk children offered vaccination.</p> <p>At risk children: LAIV is not licenced for children under 2 years of age. At risk children over six months of age to be offered suitable quadrivalent inactivated flu vaccine (QIV).</p>	General practice
<p>Aged 2 to 3 years old: (Born between 1 September 2014 and 31 August 2016)</p>	<p>Universal programme: All 2 and 3 year olds offered LAIV.</p> <p>Children who turn two after 31 August 2018 are not eligible.</p> <p>Children who were three on 31 August 2018 and turn four afterwards, are still eligible.</p> <p>At risk children: Offer LAIV. If LAIV is contraindicated (or it is otherwise unsuitable), then offer suitable quadrivalent inactivated flu vaccine (QIV).</p>	General practice
<p>Aged 4 to 9 years old: (Born between 1 September 2008 and 31 August 2014)</p>	<p>Universal programme: All primary school years from reception class to year 5* offered LAIV.</p> <p>At risk children: Offer LAIV. If LAIV is contraindicated (or it is otherwise unsuitable), then offer suitable quadrivalent inactivated flu vaccine (QIV).</p> <p>At risk children may be offered vaccination in general practice if the school session is late in the season, parents prefer it, or they missed the school session. Also, some schools may not offer inactivated vaccines to at risk children in whom LAIV is contraindicated.</p>	School
Aged 10 years old to less than 18 years	<p>Universal programme: No. Only at risk children offered vaccination.</p> <p>At risk children: Offered LAIV. If LAIV is contraindicated (or it is otherwise unsuitable), then offer suitable Quadrivalent inactivated flu vaccine (QIV).</p>	General practice

* Reception class (4 to 5 year olds); Year 1 (5 to 6 year olds); Year 2 (6 to 7 year olds); Year 3 (7 to 8 year olds); Year 4 (8 to 9 year olds); Year 5 (9 to 10 year olds).

Flu vaccine ordering for the 2018-19 children's programme

Information for General Practice

ImmForm order controls have been in place for general practice for the past 2 years to reduce the amount of Live Attenuated Influenza Vaccine (LAIV), or Fluenz Tetra®, ordered across England but not administered to children. This approach has been successful in reducing the amount of vaccine which goes unused and similar controls will be in place again this year.

The controls are tailored to each practice, and work by allocating an amount of vaccine based on the number of registered eligible patients. The planned timings and changes to the allocations are set out below in order to assist with local planning. Please note that these controls are subject to change as necessary (i.e. to increase allocations earlier than planned), to respond to the needs of the programme.

The following controls will be applied to those accounts ordering for general practice:

In the first 4 weeks all customers will be able to order up to 40% of the eligible cohort (all 2 and 3 year olds, plus at risk from 4 – <18 years). Requests for extra vaccine will be considered on a case by case basis.

In the next 4 weeks, all practices will be able to order up to last year's INDIVIDUAL uptake (or remain at 40% if individual uptake was lower). Requests for extra vaccine will be considered on a case by case basis.

After these first 8 weeks all practices will be able to order a set number of packs per week (one order per week) depending on stock levels. Requests for additional vaccine will continue to be considered on a case by case basis.

Any changes to this schedule in-season will be communicated via the news item on the ImmForm front page.

Requests for additional vaccine should be sent to the ImmForm helpdesk (helpdesk@immform.org.uk/0844 376 0040) and should be sent in good time before your order cut-off. Out of schedule deliveries will be by exception only.

Multi Branch Practices and LAIV allocations

GP practices or groups that operate over multiple sites but are part of the same organisation will have a joint allocation (as in previous years), even where each site has a unique ImmForm account. What this means is that it is possible for one site to order all of the available vaccine for the group unless there is local agreement on how the available amount should be shared. PHE recommend that this agreement is in place before ordering opens to reduce the risk of supply interruption. Practices should be able to work out how much vaccine they will be allocated during the first 8 weeks, and how it should be split between all sites, using the information above.

If additional vaccine is required then this should be requested in the normal way via the [ImmForm helpdesk](#).

Information for School Providers

A default cap of 300 packs (3000 doses) per week, per account will be in place for school providers (as in previous years). This is a limit and not a target. Our advice to hold no more than 2 weeks' worth of stock at any one time still applies, and should be adhered to by all providers.

We understand that there may be instances where school providers need to order more than 300 packs (3000 doses) in a week. Where this is the case, providers will need to contact the ImmForm helpdesk to arrange a large order. These will be dealt with on a case by case basis and will be by exception.

Additionally, if a provider covering a large area feels that they need a higher weekly cap than 300 packs (3000 doses) to deliver the programme, they should discuss their vaccine requirements with their Commissioner in the first instance and then with their support, request an increase via the ImmForm helpdesk.

Orders will be monitored regularly and Commissioners will be alerted to any requests for additional vaccine or unusual ordering activity.

We would ask all those responsible for the ordering of LAIV vaccine to review their past ordering and uptake rates, and identify ways in which ordering can be better informed and act on them. This will ensure vaccine is available for those who need it and save the NHS a significant amount of money.

REMEMBER

PHE orders sufficient LAIV to ensure that all providers can improve on their previous uptake rates. We spread the deliveries of LAIV into the UK over several weeks to reduce risk of substantial supply chain failure and to extend the shelf life of the vaccine throughout the season.

This means that you do not need to worry that we have not ordered enough vaccine. It does mean that we cannot support a scenario where providers order the majority of their total vaccine requirement in the initial ordering period. Ordering excess stock, especially early in the season, creates a risk that it will expire before it can be used, and subsequently in many cases additional stock will then need to be ordered. This could lead to a shortage of vaccine.

You can avoid this by maintaining awareness of the stock you are holding locally and only order what you need to top up on a weekly basis.



Inactivated flu vaccine ordering

This year, PHE will be supplying an inactivated vaccine that is suitable for all children from six months to less than 18 years old. It should be used for eligible children who are contraindicated for Fluenz Tetra (or it is otherwise unsuitable) AND are in a clinical risk group.

This vaccine is Quadrivalent Influenza Vaccine (split virion, inactivated), and will have an initial order cap of 30 doses per week.

Reduction in over ordering of LAIV (Fluenz Tetra®) for the children's national flu vaccination programme

PHE continues to monitor the amount of Fluenz Tetra® that is ordered by NHS England providers (GPs and school teams) for children, but not administered to children as part of the national programme. In the 2017-18 season we estimate that this was in excess of 400,000 doses, or around 13% of the volume distributed. This is a reduction of almost a third since 2015-16 season, and a great achievement by everyone.

But there is still room to improve on this and we ask that providers continue to work with us to minimise the amount of Fluenz Tetra® that is ordered but not used, which will both save the NHS money and ensure that vaccine is available to those who need it.



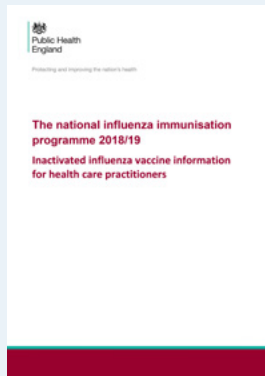
All influenza vaccines available in the UK for 2018/19 season

Supplier	Product details	Vaccine type	Age indications	Ovalbumin content micrograms/ml (micrograms/dose)	Contact details
AstraZeneca UK Ltd	Fluenz Tetra ▼	Live attenuated, nasal (quadrivalent)	From 24 months to less than 18 years of age	≤0.12 (<0.024/0.2ml dose)	0845 139 0000
GSK	Fluarix™ Tetra ▼	Split virion inactivated virus (quadrivalent)	From 6 months	≤0.1 (≤0.05/0.5ml dose)	0800 221 441
MASTA	Quadrivalent Influenza Vaccine (split virion, inactivated) ▼	Split virion, inactivated virus	From 6 months	≤0.1 (≤0.05/0.5ml dose)	0113 238 7552
Mylan (BGP Products)	Influvac® sub-unit Imuvac® Influenza vaccine MYL	Surface antigen, inactivated virus (trivalent)	From 6 months	0.2 (0.1/0.5ml dose)	0800 358 7468
	Quadrivalent Influenza vaccine Tetra MYL ▼ Quadrivalent Influvac sub-unit Tetra ▼	Influenza virus surface antigen (inactivated)	From 18 years	0.2 (0.1/0.5ml dose)	
Pfizer Vaccines	Influenza vaccine (split virion, inactivated), pre-filled syringe	Split virion, inactivated virus (trivalent)	From 5 years	≤2 (≤1/0.5ml dose)	0800 089 4033
Sanofi Pasteur Vaccines	Quadrivalent Influenza Vaccine (split virion, inactivated) ▼	Split virion, inactivated virus	From 6 months	≤0.1 (≤0.05/0.5ml dose)	0800 854 430
Seqirus UK Ltd	Fluad®	Surface antigen, inactivated, Adjuvanted with MF59C.1 (trivalent)	65 years of age and over	≤0.4 (≤0.2/0.5ml dose)	08457 451 500

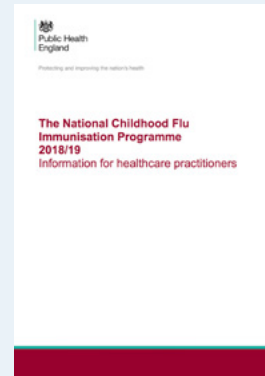
Note the ovalbumin content is provided in units of micrograms/ml and micrograms/dose.
None of the influenza vaccines for the 2018/19 season contain thiomersal as an added preservative.

Information and training for healthcare practitioners

Two information documents for healthcare practitioners providing information on the annual flu vaccination programme, the vaccines and how to administer them have been updated and are available at the following links:



The national flu immunisation programme: information for healthcare practitioners: [weblink 5](#)



The childhood flu programme: information for healthcare practitioners: [weblink 6](#)



The national flu immunisation programme 2018/19 training slides: [weblink 7](#)



The national childhood flu immunisation programme 2018/19 training slides: [weblink 8](#)



Flu immunisation e-learning programme!

An interactive flu immunisation e-learning programme, written by PHE, and produced by Health Education England's e-Learning for Healthcare, is available at [weblink 24](#) for anyone involved in delivering the flu immunisation programme.

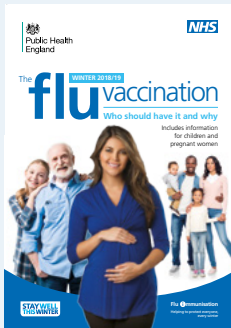
Patient Group Direction (PGD)

PGD templates to support the administration of intramuscular inactivated influenza vaccine and live attenuated influenza vaccine (Fluenz Tetra®) in accordance with the national seasonal influenza vaccination programme are available via [weblink 25](#).

Resources to support delivery of the programme

The following resources have been produced to promote the national immunisation flu programme and are available to view and download here.

Remember to place your orders for leaflets and posters in plenty of time. Most orders are processed and dispatched within 3-5 working days.



The flu vaccination winter 2018/19: Who should have it and why

Product code: 3079111C

This leaflet for patients gives information on all groups eligible for flu vaccination, including children, carers, those 65 and over, at risk groups and pregnant women.

See [weblink 9](#)



Protecting your child against flu leaflet 2018 to 2019 season

Product code 2902552B

The leaflet explains which children are eligible for flu vaccination, as well as describing the disease and the vaccine. You can order copies of this leaflet using.

See [weblink 10](#)



5 reasons to vaccinate your child poster

Product code: 3079111C

This poster is aimed at parents and explains the vaccine and the benefits of vaccinating children against flu.

See [weblink 12](#)

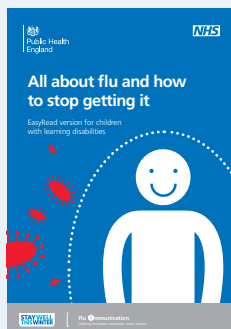


Pregnancy: How to help protect you and your baby

Product code 2903655

This leaflet sets out information on the flu and whooping cough vaccines offered during pregnancy, plus information on rubella vaccination which is recommended for women who require protection before becoming pregnant again.

See [weblink 11](#)



All about flu and how to stop getting it: easy read version for people with learning disabilities

Product code 2904202

This easy read leaflet is aimed at people who have a learning disability. It explains why it is important for them to have flu vaccination.

See [weblink 13](#)



All about flu and how to stop getting it: easy read version for children with learning disabilities

Product code 3248960

This easy read leaflet is aimed at children who have a learning disability. It explains why it is important for them to have flu vaccination.

See [weblink 14](#)



Immunising primary school children against flu: advice for headteachers

Product code: 2016027B

This briefing is about the nasal spray vaccine being offered to children in schools in the autumn of 2018.

See [weblink 15](#)

And these are available to download:



Flu poster for visitors to hospitals

Product code: FLU2001

This poster is designed to inform visitors to hospital patients to avoid visiting patients if they have symptoms of flu. It also advises them to help protect their relative or friends by having the free flu vaccine if they are eligible.

See [weblink 16](#)

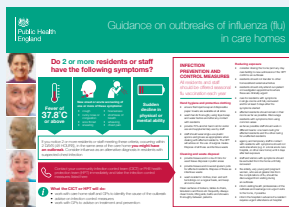


Flu poster for visitors to care homes

Product code: FLU2002

This poster is designed to inform visitors to care homes to avoid visiting residents if they have symptoms of flu. It also advises them to help protect their relative or friends by having the free flu vaccine if they are eligible.

See [weblink 17](#)



Information for care homes on recognising a flu outbreak

Information for care home on recognising an outbreak and infection and control measures. This poster is suitable for all social care settings.

See [weblink 18](#)



Increasing influenza immunisation uptake among children: best practice guidance for general practice

This document sets out key strategies for general practice to help increase flu vaccine uptake in children aged two and three years old.

See [weblink 19](#)

Flu vaccination invitation letters: for general practice and schools

These letter templates can be downloaded and adapted to suit local needs. They include letters for general practice to invite at risk patients and children for flu vaccination.

There is also an easy read version for those with learning difficulties. A letter template is also available for healthcare teams providing flu immunisation in schools. It should be sent to parents of eligible children, along with an accompanying information leaflet and consent form.

- Download invitation letter template for at risk patients: [weblink 20](#)
- Download invitation letter template for children aged 2 and 3 years: [weblink 21](#)
- Download invitation letter template for those with learning difficulties: [weblink 22](#)
- Download invitation letter template for schools: [weblink 23](#)

Flu immunisation consent form

This consent form template can be downloaded and adapted to suit needs of local healthcare teams providing flu vaccination in schools. It should be sent to parents of eligible children, along with an information leaflet.

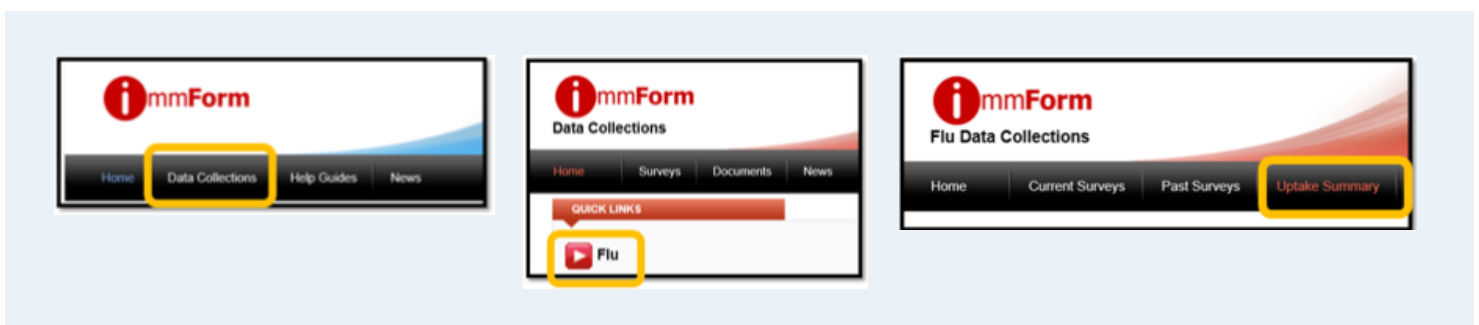
- Download consent form template: [weblink 23](#)

Uptake Summary Tool – we are only as good as our data!

The ImmForm website provides an Uptake Summary Tool to help NHS England Screening and Immunisation Teams and practice managers monitor and improve influenza vaccine uptake. Throughout the influenza season, weekly emails will direct people to ImmForm where weekly cumulative vaccine uptake for areas/practices are available¹.

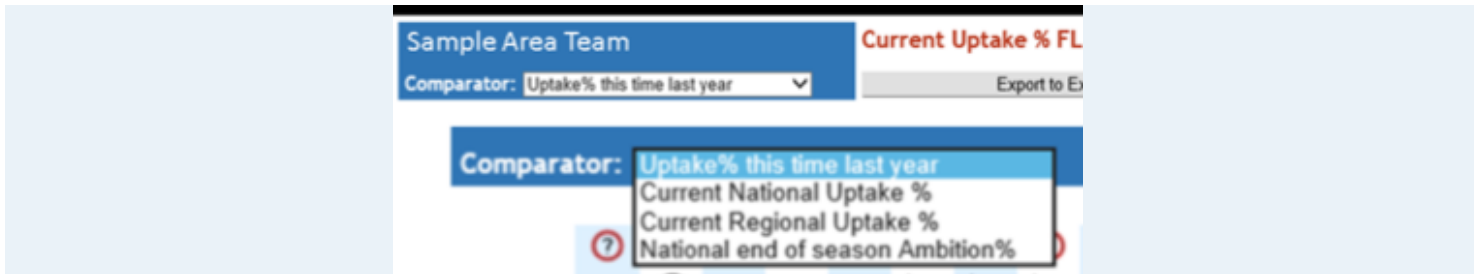
Access to the uptake summary tool data is restricted depending on the permissions the user has on ImmForm. For example, GP practice managers may view influenza vaccine uptake of their practice only and CCG leads may view a list of influenza vaccine uptake of all of the practices and drill down to the practice level data within the CCG.

Once logged on to the website, please select 'Data Collection', followed by 'Flu', and finally 'Uptake Summary'.

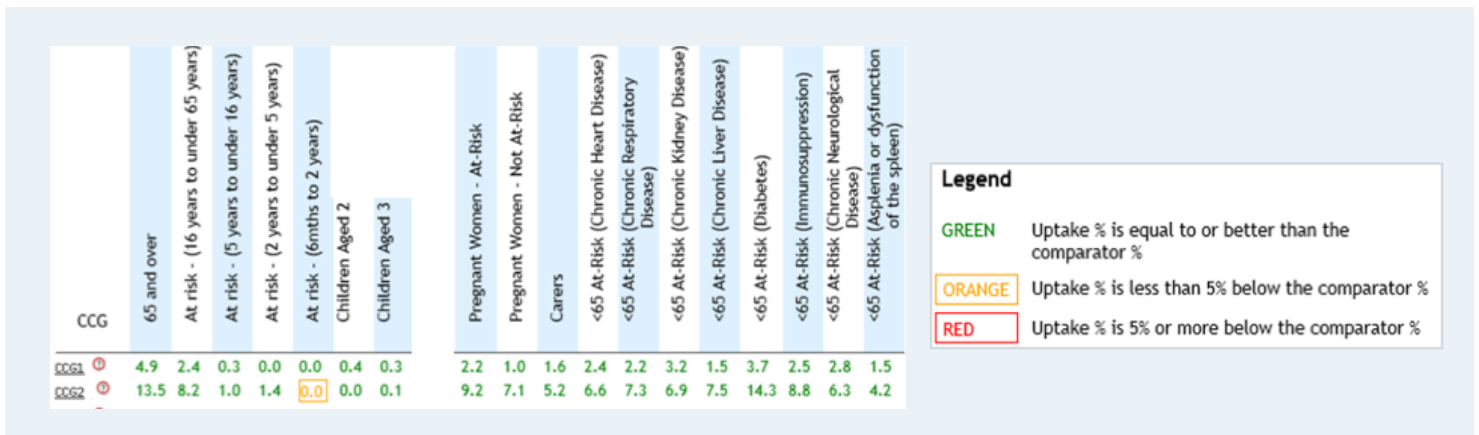


The Uptake Summary Tool serves as a visual aid and enables teams to assess influenza vaccine uptake on weekly basis.

CCG leads view: The PHE Comparator allows you to select how you would like to compare the current influenza vaccine uptake figures (i.e. Uptake % this time last year, Current National Uptake %, Current Regional or CCG I Average Uptake %, and National end of season Ambition %)



Data are displayed in a table format which can be exported to Excel. The data are presented in three different colours:



CCG leads and GP practice managers view: Practice level data display information by selection criteria and indicate the number of vaccinations necessary to meet the National Ambition. The full screen option allows you to compare your current vaccine uptake with the previous season.

At-Risk - Age Groups	Eligible Population	Remaining patients to vaccinate	Vaccinations to meet National Ambition	Variance to uptake this time last year	Ranking within CCG based on Uptake%	Uptake% v's CCG Average Uptake%
65 and over	2413	2305	1727	3.4%	14/30	●
16 years to under 65 years	869	843	460	2.0%	13/30	●
5 years to under 16 years	64	64	35	0.0%	5/30	●
2 years to under 5 years	12	12	6	0.0%	1/30	●
6mths to 2 years	1	1	0	0.0%	1/30	●
Children						
Aged 2	121	121	48	0.0%	2/30	●
Aged 3	123	122	49	0.0%	3/30	●

1. The ImmForm Uptake Summary Tool is used for surveillance purposes and should not be used to calculate payments. ImmForm and CQRS data may use different extraction rules and therefore may result in different values.

Annual Flu Marketing Campaign Stay well this winter

Do you have?

- heart disease
- kidney disease
- liver disease
- diabetes
- COPD (e.g. bronchitis or emphysema)

Flu can be serious and lead to hospitalisation. Get a free flu jab from us. It's free because you need it. Speak to your GP surgery or pharmacy today.

HELP US HELP YOU
STAY WELL THIS WINTER

nhs.uk/staywell

This is not a full list of conditions. If you have a long term health condition, talk to your GP surgery or local pharmacist to see if you are eligible for a flu jab.

Cheryl Sowell, Nurse

Pregnant? See us for your flu jab and help protect your baby and you

The flu jab is the safest way to avoid the flu and any serious complications it can cause. It's free because you need it, however many months pregnant you are and however fit and healthy you might feel.

Speak to your GP surgery, midwife or pharmacist today.

HELP US HELP YOU
STAY WELL THIS WINTER

nhs.uk/staywell

Is your child aged 2-3? See us to help protect them from flu

Flu can be horrible for little children and if they get it, they can spread it around the whole family. It's not usually an injection, just a quick and easy nasal spray.

HELP US HELP YOU
STAY WELL THIS WINTER

nhs.uk/staywell

All those aged 2 and 3 (but not 4 years or older) on 31 August 2018.

Rachel Keith, Nurse

The flu marketing campaign will launch 8 October and run until the end of the month. It will consist of TV, radio and social advertising supported by PR, search and partnership activity. It will promote flu vaccination amongst pregnant women, children, and those with long term health conditions.

The campaign toolkit and assets will be available at the end of September on the PHE Campaign Resource Centre – see [weblink 26](#).

Web links

- weblink 1 www.gov.uk/government/publications/national-flu-immunisation-programme-plan
- weblink 2 www.england.nhs.uk/publication/flu-vaccination-programme-delivery-guidance-2018-19/
- weblink 3 www.nice.org.uk/guidance/ng103
- weblink 4 www.gov.uk/government/publications/influenza-the-green-book-chapter-19
- weblink 5 www.gov.uk/government/publications/inactivated-influenza-vaccine-information-for-healthcare-practitioners
- weblink 6 www.gov.uk/government/publications/childhood-flu-programme-qa-for-healthcare-professionals
- weblink 7 app.box.com/s/wegujxyyncpunxzkjijpzgbwzfzjdgrhm
- weblink 8 www.slideshare.net/PublicHealthEngland/national-childhood-flu-immunisation-programme-201718-training-for-healthcare-practitioners
- weblink 9 www.gov.uk/government/publications/flu-vaccination-who-should-have-it-this-winter-and-why
- weblink 10 www.gov.uk/government/publications/flu-vaccination-leaflets-and-posters
- weblink 11 www.gov.uk/government/publications/pregnancy-how-to-help-protect-you-and-your-baby
- weblink 12 www.gov.uk/government/publications/flu-vaccination-leaflets-and-posters
- weblink 13 www.gov.uk/government/publications/flu-leaflet-for-people-with-learning-disability
- weblink 14 www.gov.uk/government/publications/flu-leaflet-for-people-with-learning-disability
- weblink 15 www.gov.uk/government/publications/flu-vaccination-in-schools
- weblink 16 www.gov.uk/government/publications/flu-poster-for-visitors-to-hospitals-and-care-homes
- weblink 17 www.gov.uk/government/publications/flu-poster-for-visitors-to-hospitals-and-care-homes
- weblink 18 www.gov.uk/government/publications/guidance-on-outbreaks-of-influenza-in-care-homes-poster
- weblink 19 www.gov.uk/government/publications/flu-vaccine-best-practice-guide-for-gps
- weblink 20 www.gov.uk/government/publications/flu-vaccination-invitation-letter-template-for-at-risk-patients-and-their-carers
- weblink 21 www.gov.uk/government/publications/flu-vaccination-invitation-letter-template-for-children-aged-2-3-and-4-years
- weblink 22 www.gov.uk/government/publications/flu-vaccination-easy-read-invitation-letter-template
- weblink 23 www.gov.uk/government/publications/flu-vaccination-in-schools
- weblink 24 www.e-lfh.org.uk/programmes/flu-immunisation/
- weblink 25 www.gov.uk/government/collections/immunisation-patient-group-direction-pgd
- weblink 26 <https://campaignresources.phe.gov.uk/resources/>