



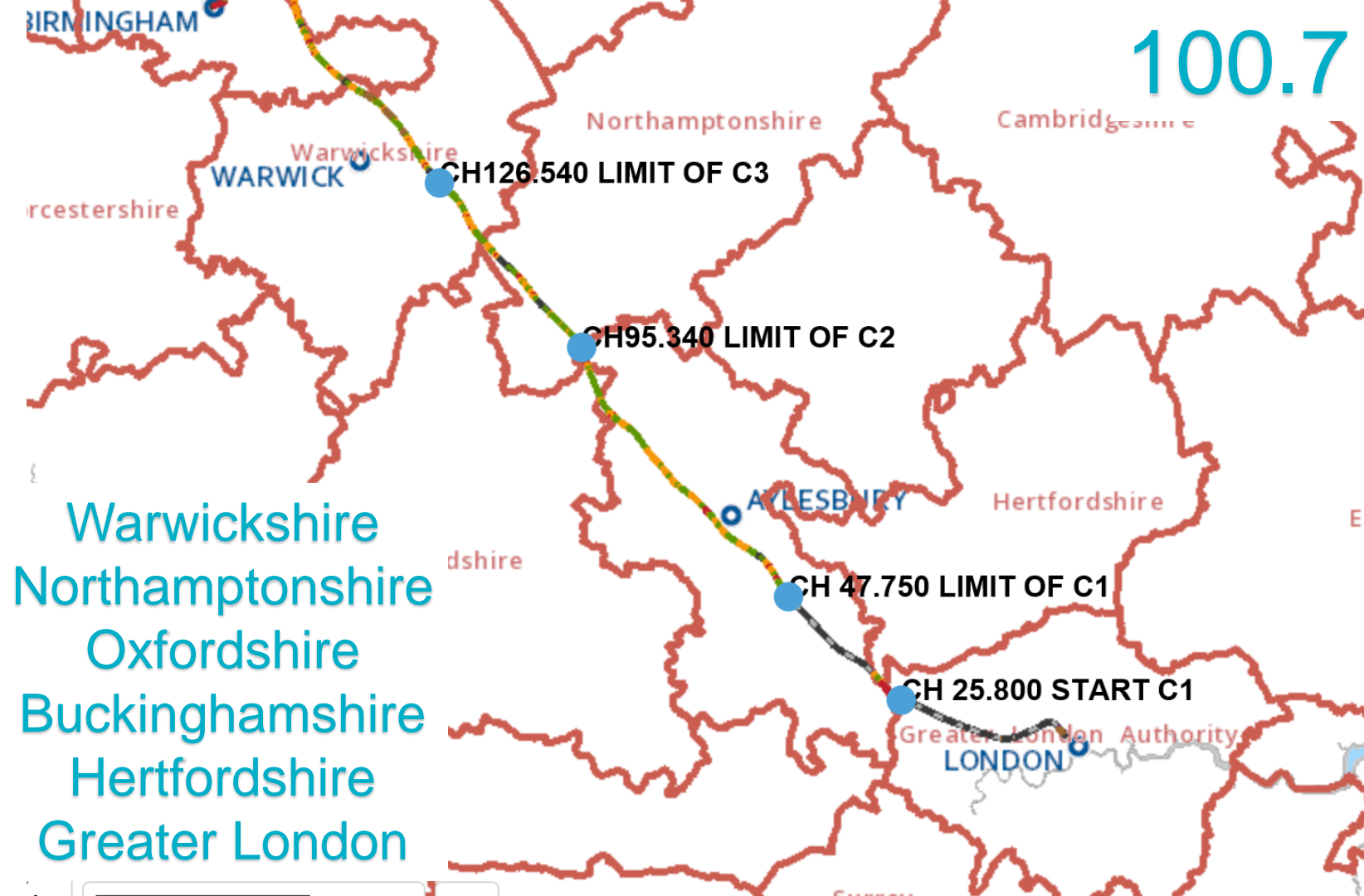
Fusion JV -EWC

fusion
Connecting people

HS2 Phase 1 Central Section: An emerging picture Survey Results

Fusion Historic Environment Team June 2018

100.7 km



Warwickshire
Northamptonshire
Oxfordshire
Buckinghamshire
Hertfordshire
Greater London

Fusion sub-contractors

- Design, non-intrusive surveys, intrusive surveys, mitigation works
- Fusion framework partners....



L~P:ARCHÆOLOGY



Archaeological Research

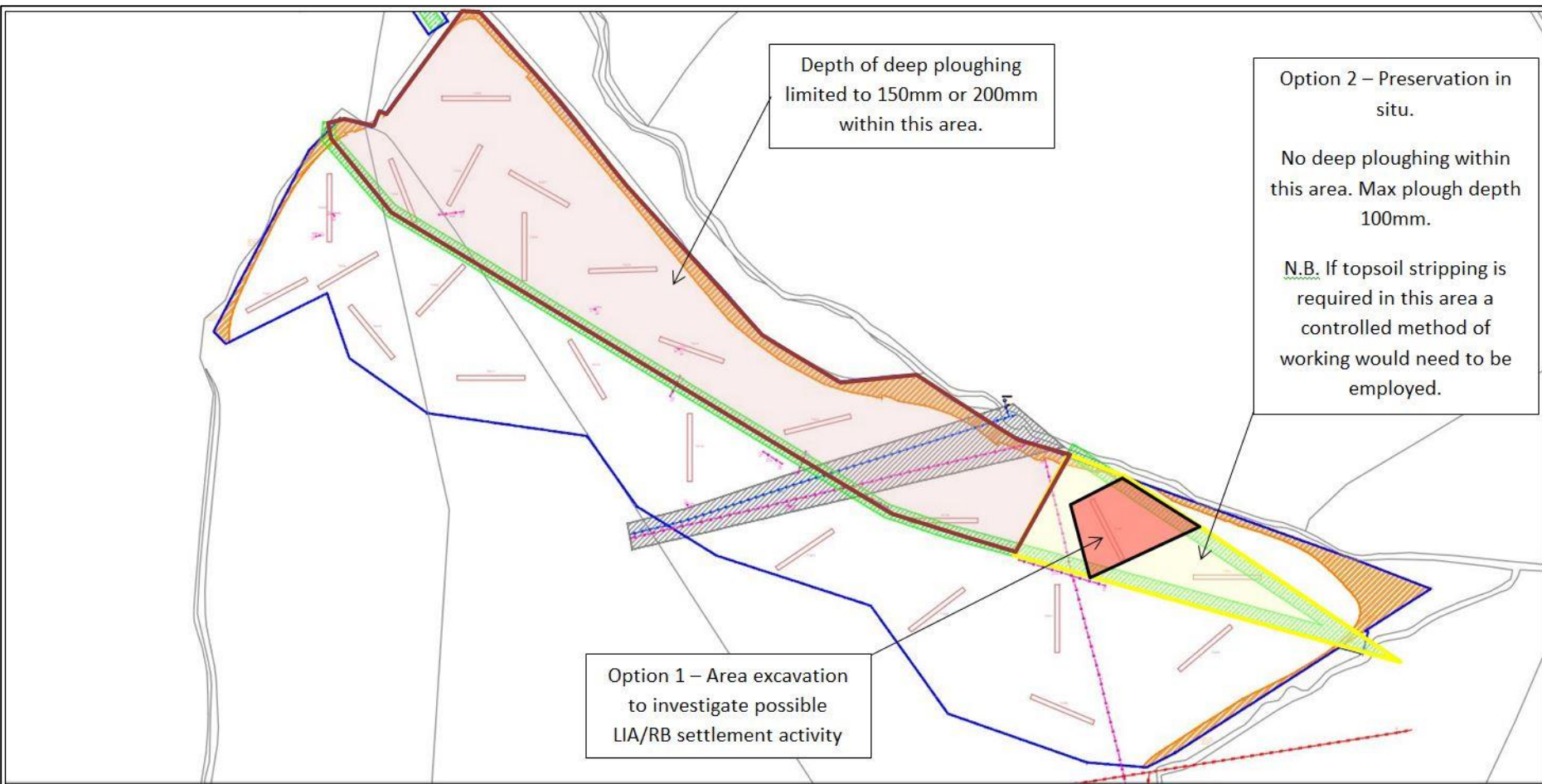
Urgent works 2017– key results

UW1 HERDS package	Achieved	Total Planned	Progress
Total areawide geophysics surveys	210 ha	214ha	98%
Total areawide intrusive works	47.77ha	47.77ha	100%
Total design documents	18	18	100%
Borehole surveys (No.)	2	2	100%
Geophysics surveys (No.)	28	29	96%
Metal Detecting Survey (No.)	1	1	100%
Recording listed building survey (No.)	1	1	100%
Heritage Setting Recording survey (No.)	4	4	100%
Trial trenching surveys	15	17	88%
UW1 HERDS Total	51 events	54 events	94%

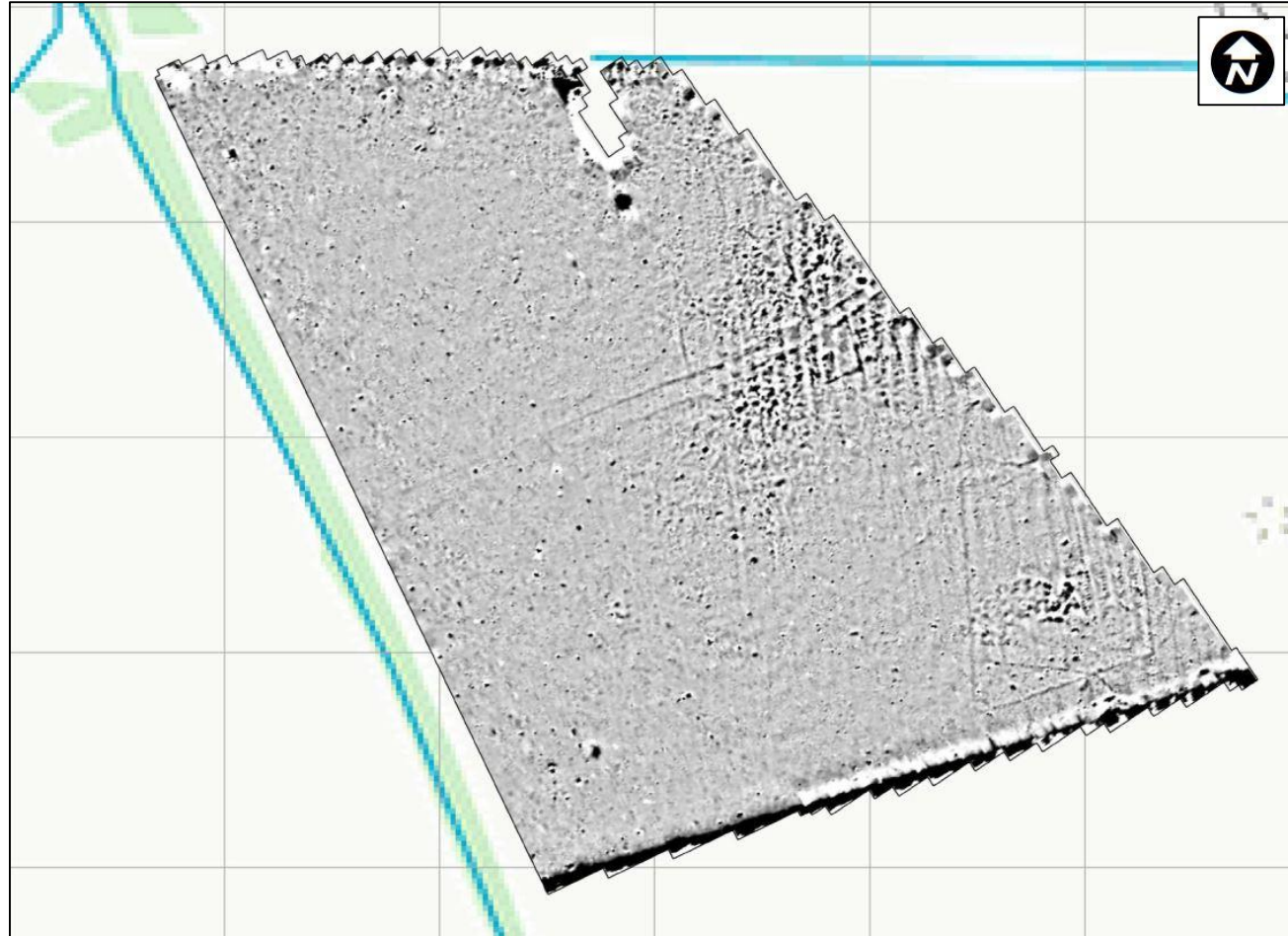
Urgent Works – Stoke Mandeville, HS2 2013 Geophysical Surveys

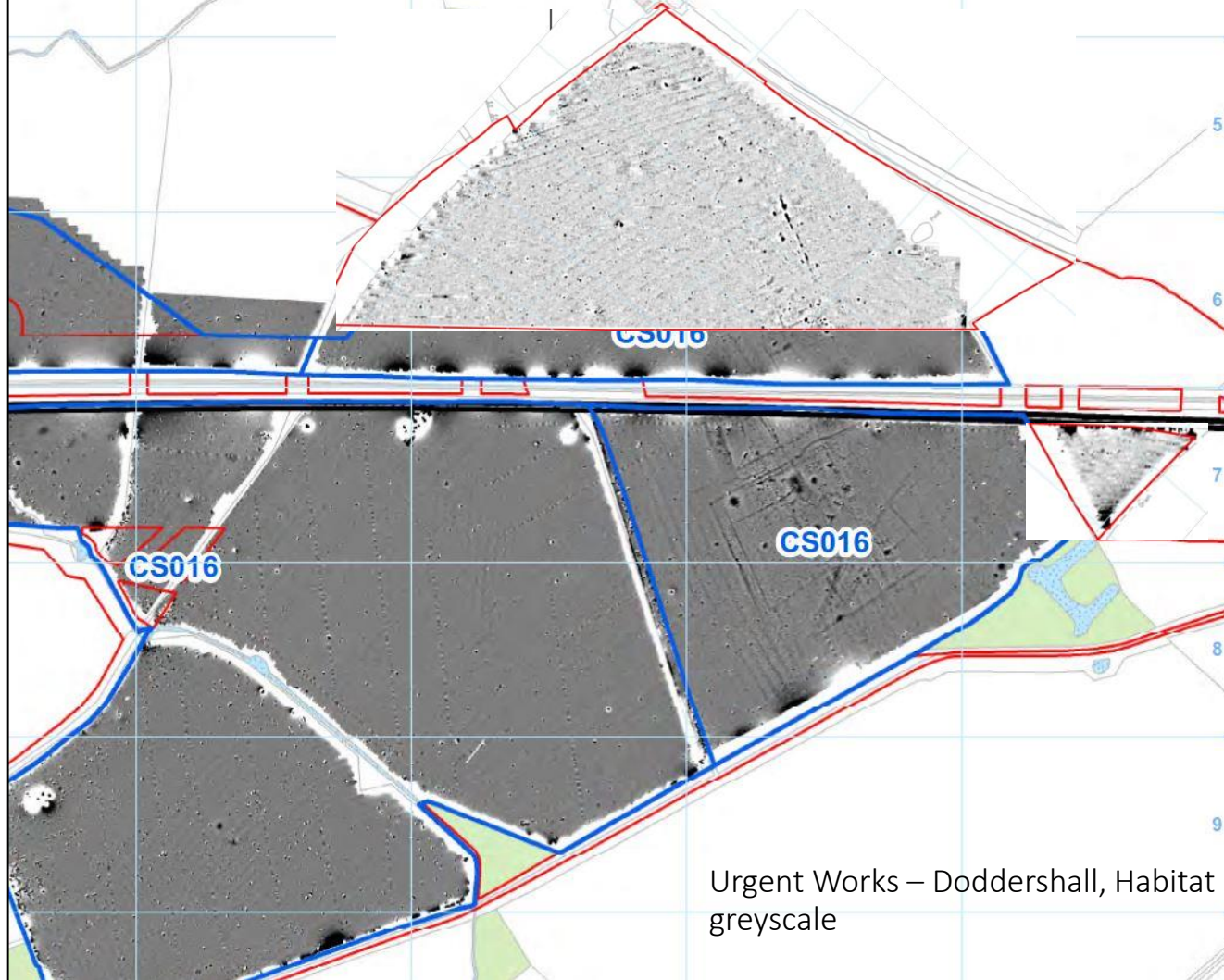


Urgent Works – Stoke Mandeville, habitat mitigation site trial trenching



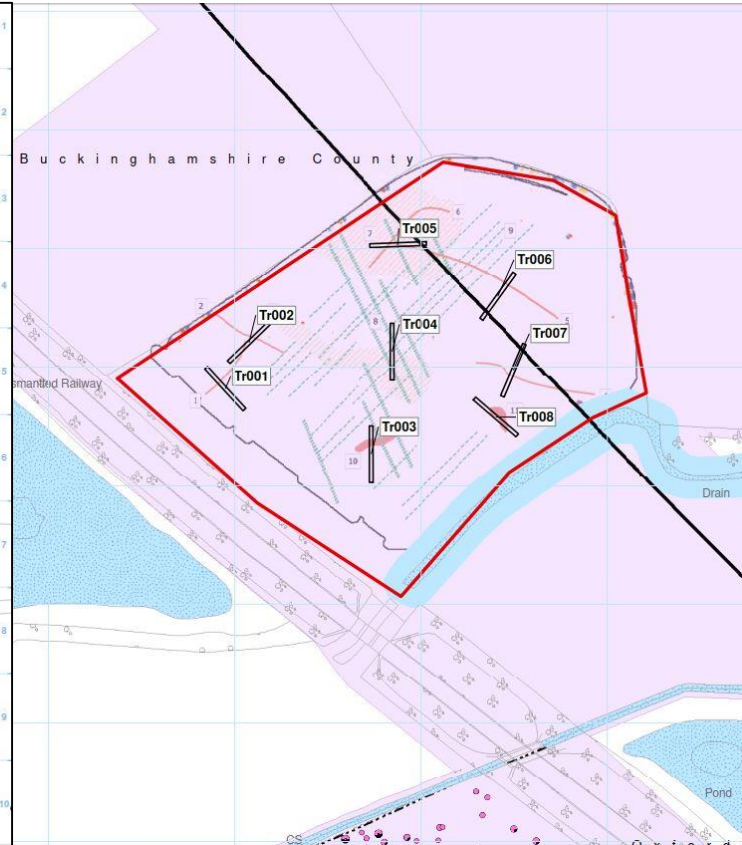
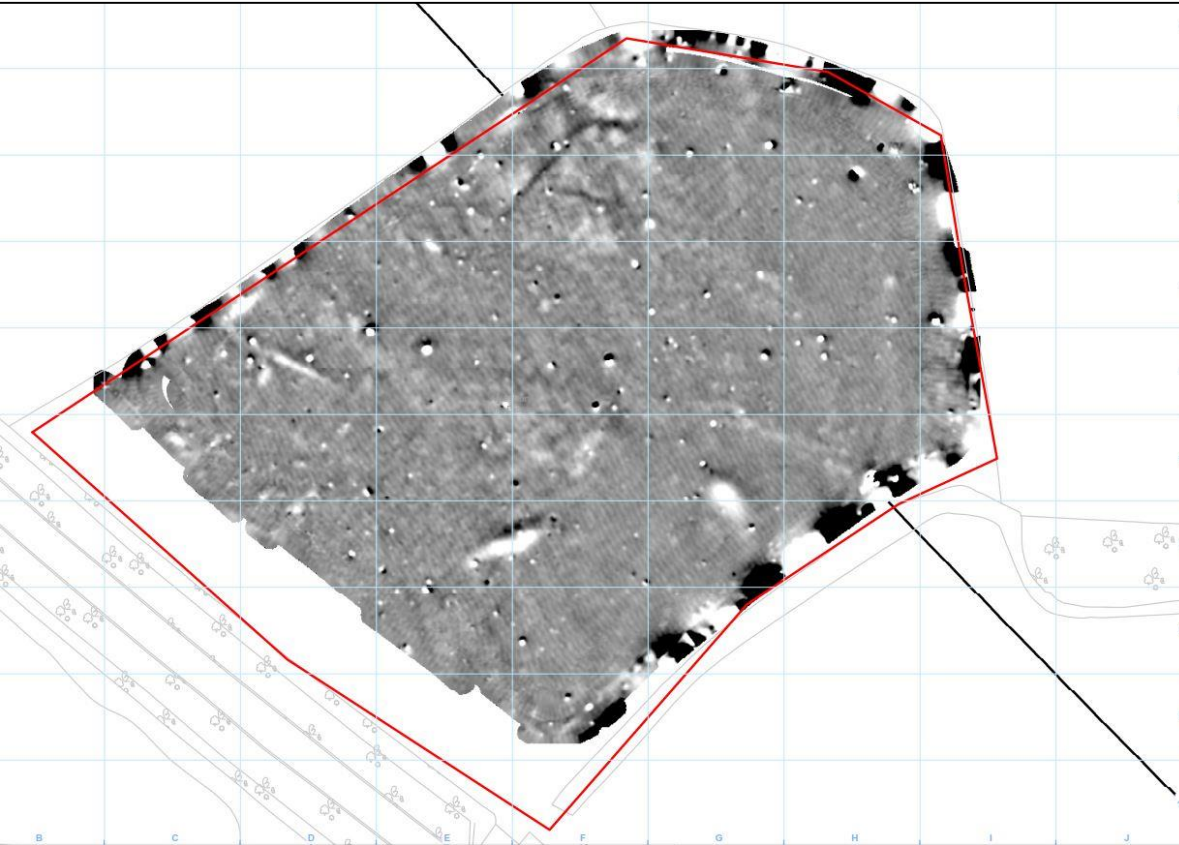
Urgent Works – Fleet Marston Spinney, Habitat Mitigation Site; greyscale





Urgent Works – Doddershall, Habitat Mitigation Site;
greyscale

Urgent Works – Chetwode Habitat Mitigation Site



AWH Stage 1

	Geophysics Tranche 1	Geophysics Tranche 2	Trial trenches
GLA			2(100)
HERTS			5 (141)
Bucks	30 (95/310ha)	39 (315ha)	40 (860)
N'Hants	12 (127/169 ha)	21 (237ha)	16 (778)
Oxon	3 (5/6ha)	5 (32ha)	2 (45)
Warks	2 (86/93ha)	8 (112ha)	1 (28)
	577	687	2386

Chipping Warden bypass

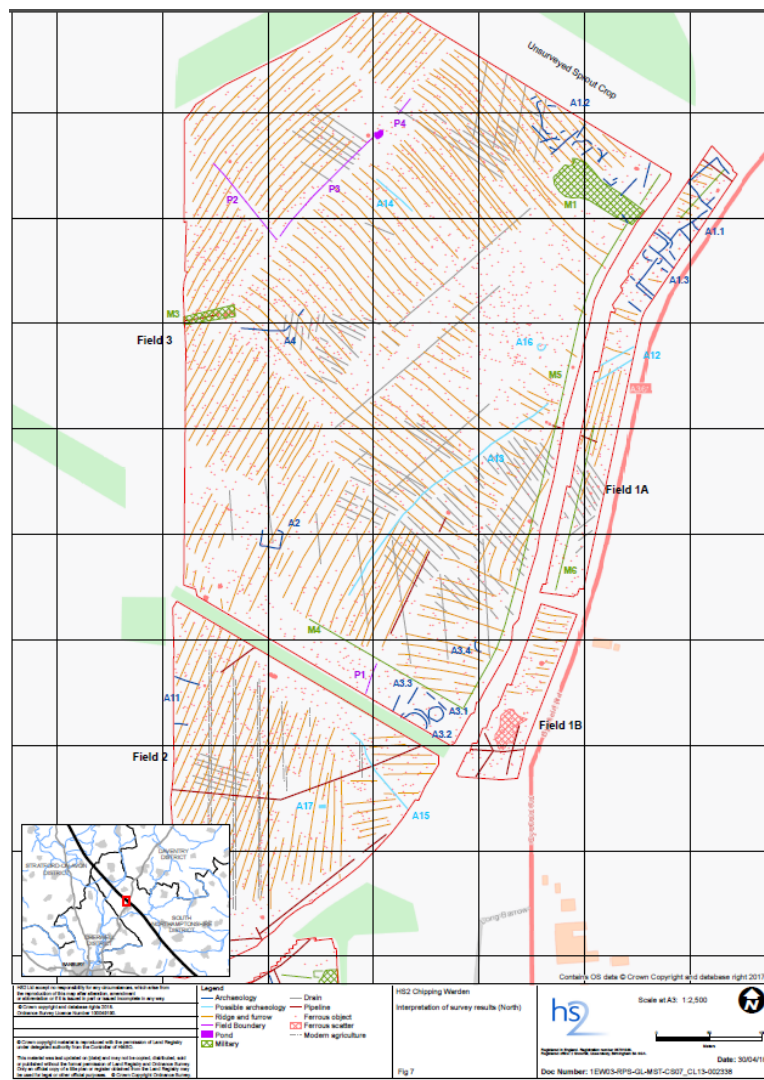


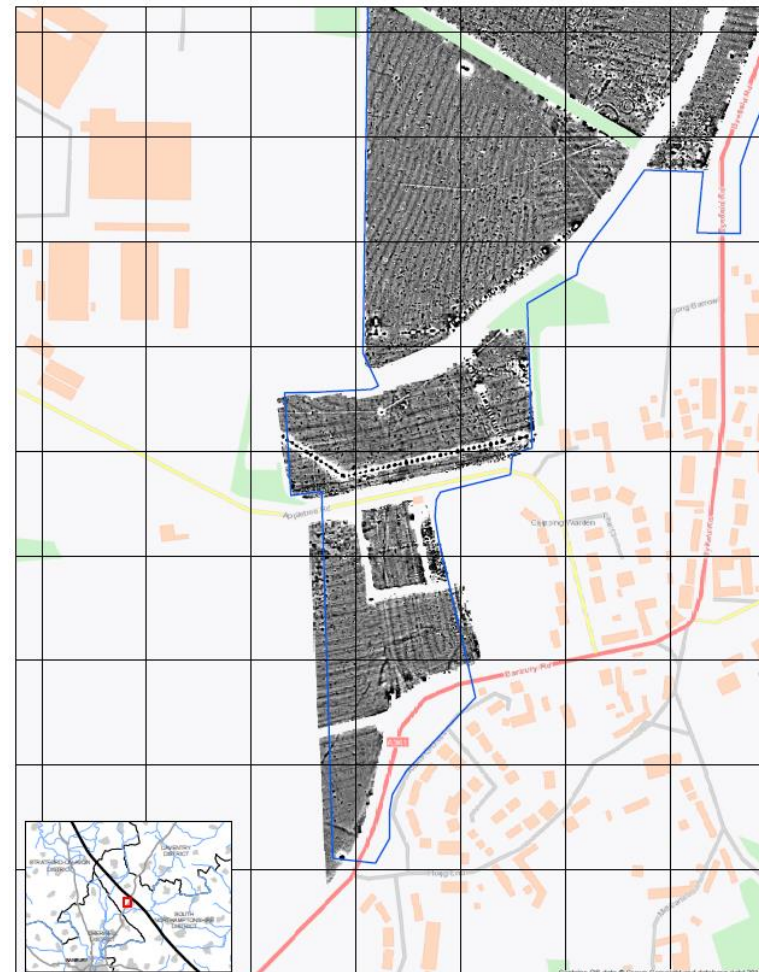
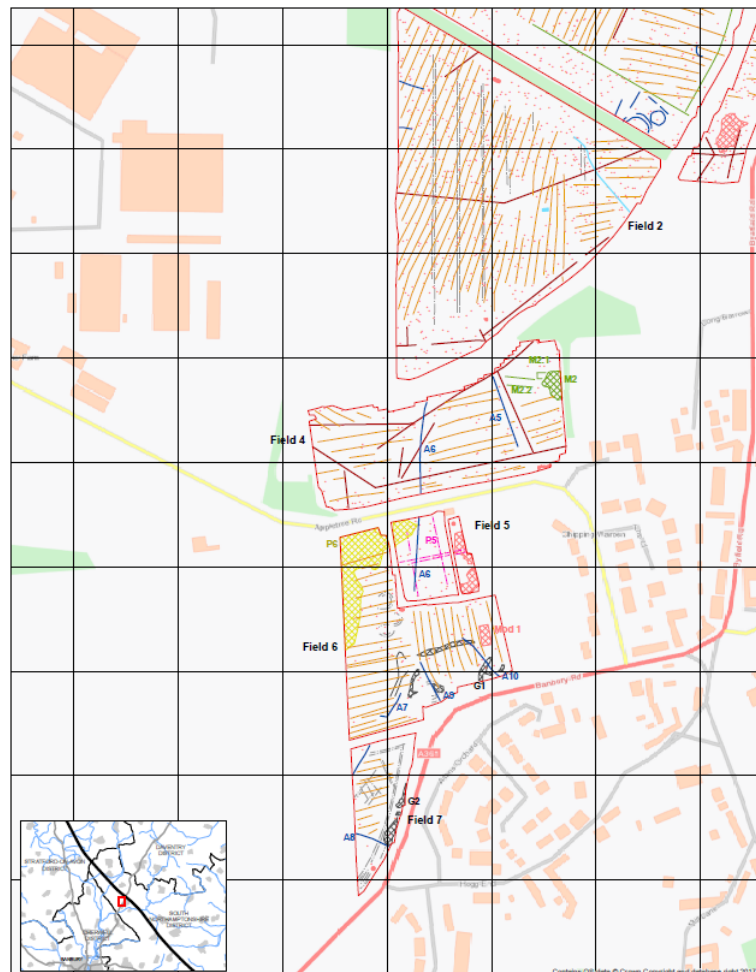
ASTON LE WALLS

APPLETREE

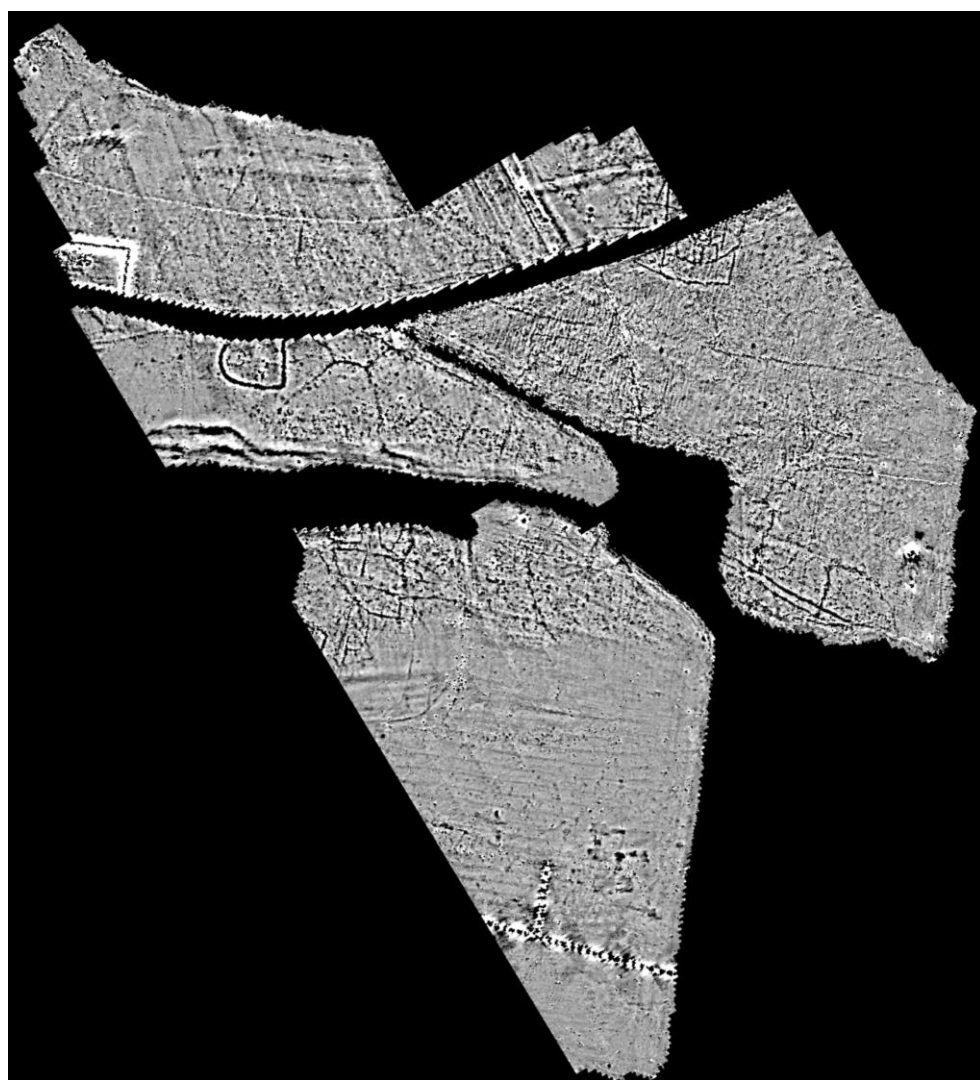
CHIPPING WARDEN

DC3

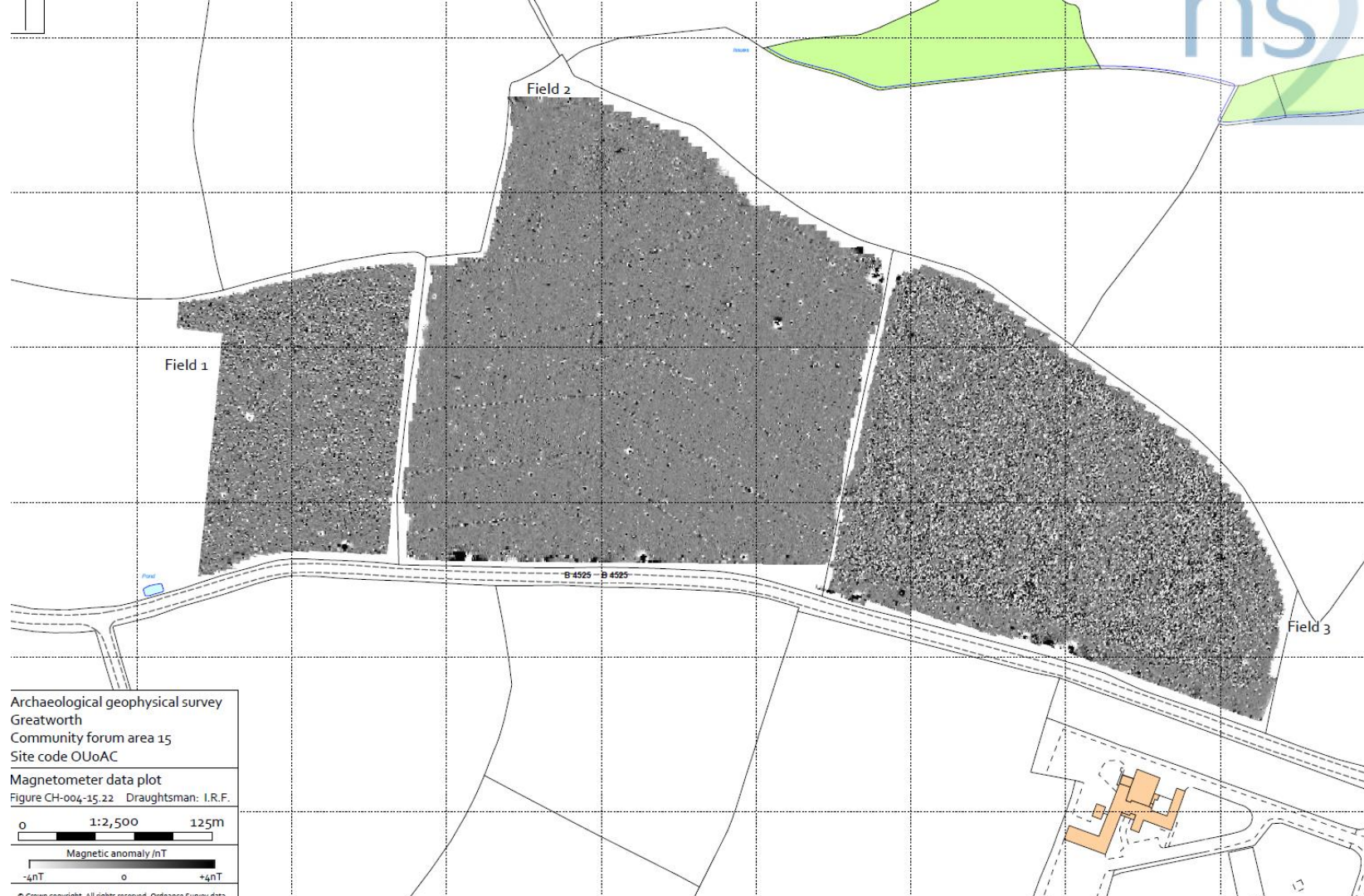




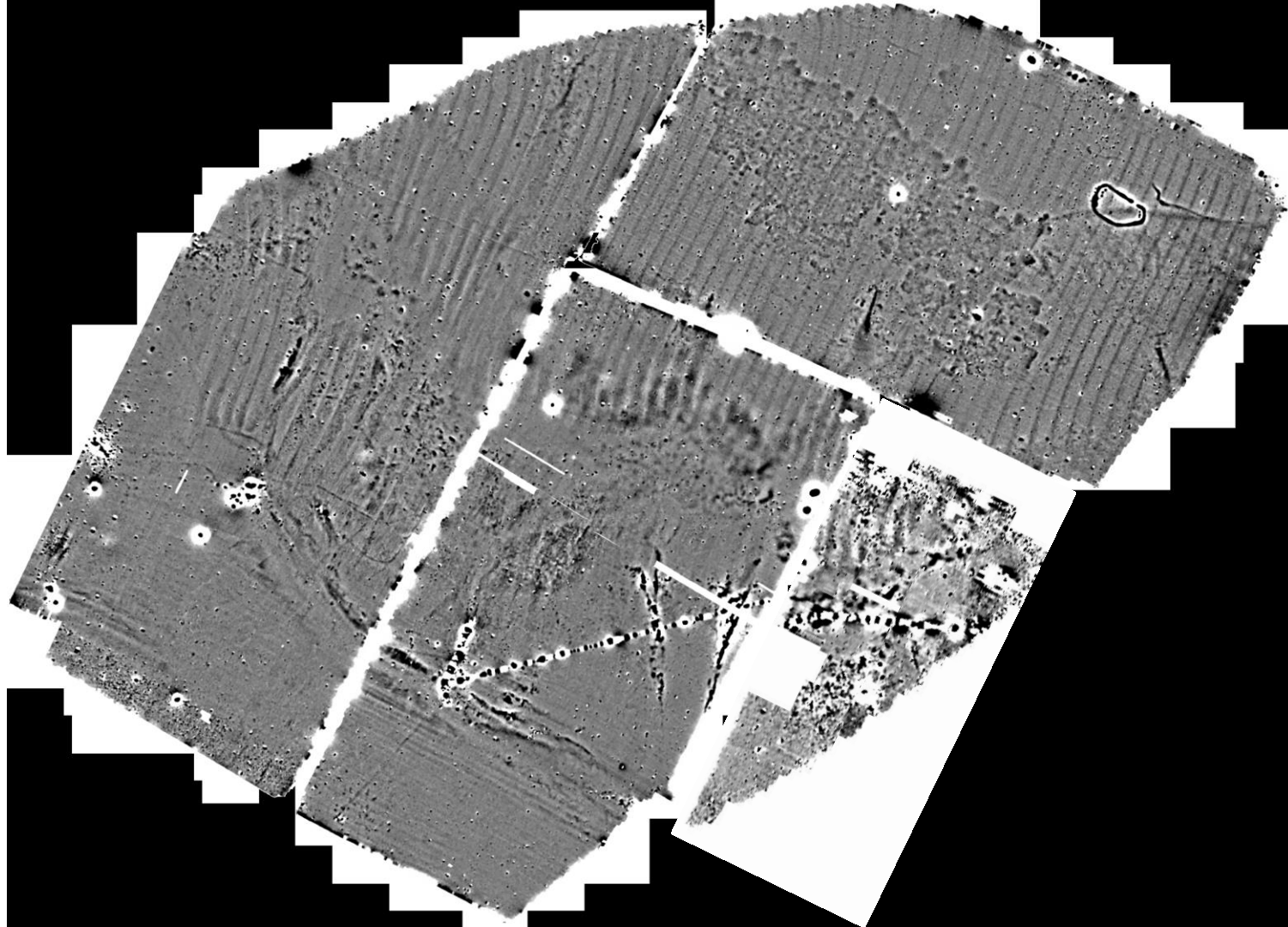
CS030

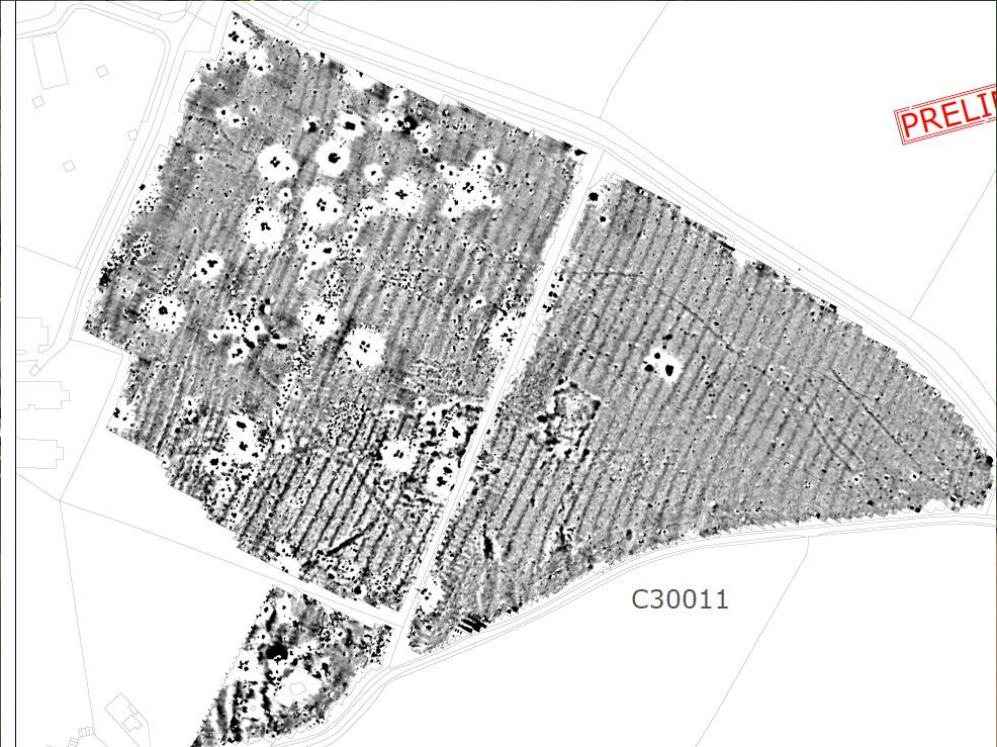
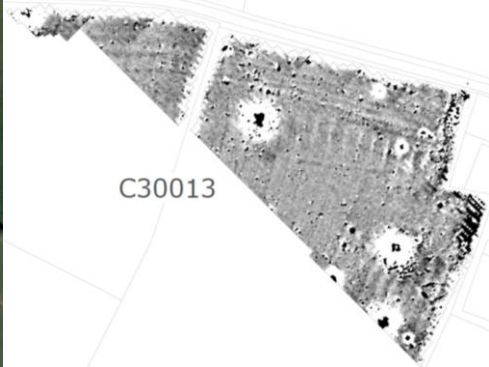


CS029

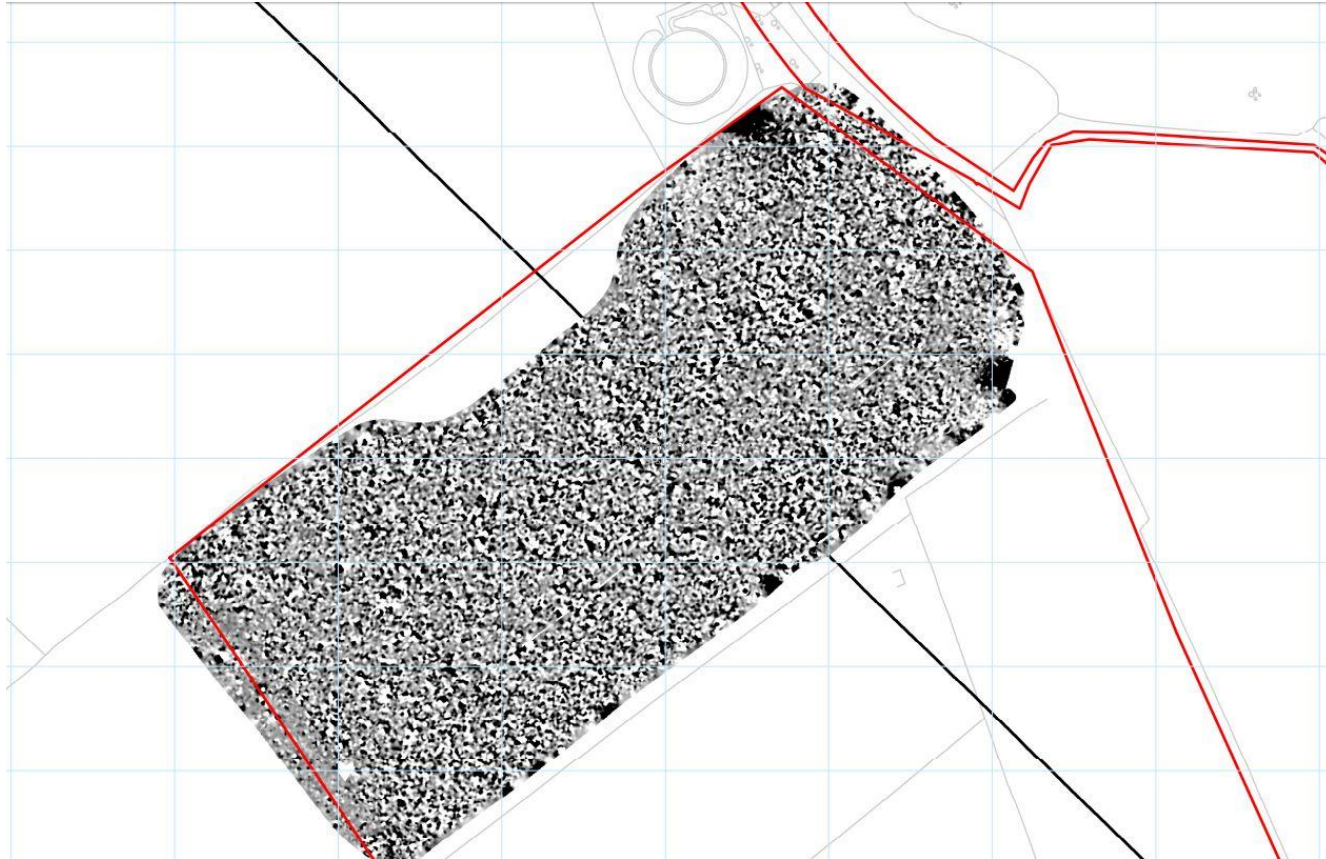


CS028





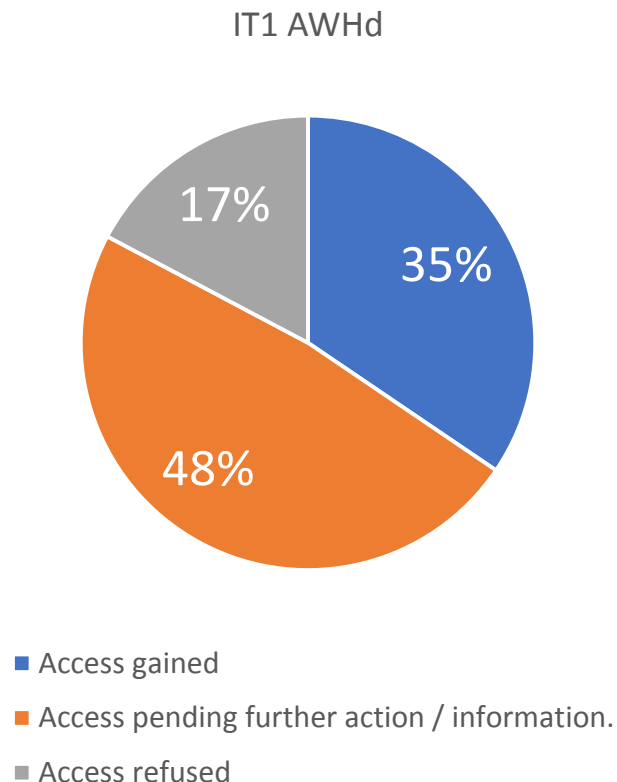
North part 1065 – impact of green manure



AWHd - IT1 – Trial trenching – commencing June 2018

IT1		
No. sites	29	
Access gained	10	Majority Sch16
Access pending further action / information.	14	Livestock/crop issues
Access refused	5	Crops

St Marys – delayed by Red Kite nest	C21009	St Marys Stoke Mandeville
Crop refusals	C23008	East of Bishopstone
	C30015	Ilett's Farm, Brackley South Cutting
	C30018	Greatworth Hall, Greatworth Green Tunnel
	C31014	East of Blackground
	C31015	Blackgrounds Farm



Look ahead 2018-2020

- Priorities 2018:
- Complete geophysics baseline
- Assess resource at the landscape scale
- Define evaluations
- Complete evaluations
- Define mitigation according to quality of preserved evidence and HERDS objectives
- Complete mitigation
- Post excavation assessment