



All-Cause Mortality Surveillance

16 August 2018 – Week 33 report (up to week 32 data)

In week 32 2018, no statistically significant excess all-cause mortality by week of death was observed overall and by age group in England, through the EuroMOMO algorithm. In the devolved administrations, no statistically significant excess all-cause mortality for all ages was observed in Scotland, Wales and Northern Ireland in week 32 2018.

All-cause death registrations (ONS), England and Wales

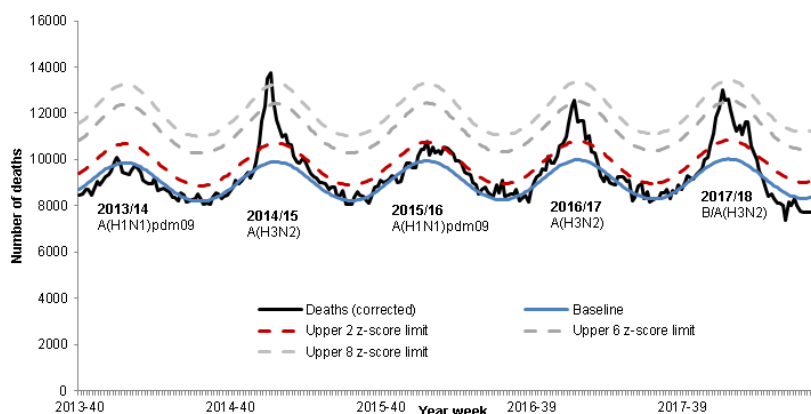
- In week 31 2018, an estimated 9,161 all-cause deaths were registered in England and Wales (source: [Office for National Statistics](#)). This is an increase compared to the 9,141 estimated death registrations in week 30 2018.

Excess all-cause (EuroMOMO) mortality in subpopulations, UK

- In week 32 2018 in England, no statistically significant excess mortality by week of death above the upper 2 z-score threshold was seen overall, by age group and subnationally (all ages), after correcting ONS disaggregate data for reporting delay with the standardised [EuroMOMO](#) algorithm (Figure 1). This data is provisional due to the time delay in registration; numbers may vary from week to week.

- In the devolved administrations, no statistically significant excess all-cause mortality for all ages was observed in Scotland, Wales and Northern Ireland in week 32 2018 (Table 2).

Figure 1: Weekly observed and expected number of all-cause deaths in all ages, with the dominant circulating influenza A subtype, England, 2013 to week 32 2018



*Note: Delays in receiving all registered deaths from April 2018, following changes in IT systems at ONS, may result in some delays in the model to adjust for most recent deaths.

Table 1: Excess mortality by age group, England*

Age group (years)	Excess detected in week 32 2018?	Weeks with excess in 2017/18
<5	x	NA
5-14	x	50
15-64	x	51-01; 03-04
65+	x	49-12

* Excess mortality is calculated as the observed minus the expected number of deaths in weeks above threshold

* NA refers to no excess seen

Table 2: Excess mortality by UK country, for all ages*

Country	Excess detected in week 32 2018?	Weeks with excess in 2017/18
England	x	49-12
Wales	x	51-11
Scotland	x	41;49-04;09
Northern Ireland	NA	47;49;51-05;07-08

* Excess mortality is calculated as the observed minus the expected number of deaths in weeks above threshold

NB. Separate total and age-specific models are run for England which may lead to discrepancies between Tables 1 + 2

* NA refers to data not available for this week

Produced by the Immunisation & Countermeasures Division, National Infection Service, Public Health England.

- Seasonal mortality is seen each year in England and Wales, with a higher number of deaths in winter months compared to the summer. Additionally, peaks of mortality above this expected higher level typically occur in winter, most commonly the result of factors such as cold snaps and increased circulation of respiratory viruses, in particular influenza and in summer occasionally as a result of heat-waves.
- RDD's weekly mortality surveillance aims to detect and report acute significant weekly excess mortality above normal seasonal levels in a timely fashion. Excess mortality is defined as a significant number of deaths reported over that expected for a given point in the year, allowing for weekly variation in the number of deaths. This triggers further investigation of spikes and informs any public health responses.
- The aim is not to assess general mortality trends or precisely estimate the excess attributable to different factors, although some end-of-winter estimates and more in-depth analyses (by age, geography etc.) are undertaken.
- Separate to the calculations presented in this report, excess winter deaths (EWD), comparing the number of deaths in the winter period compared to the non-winter period, are calculated by [ONS](#) and presented in an [atlas](#) down to local authority level.