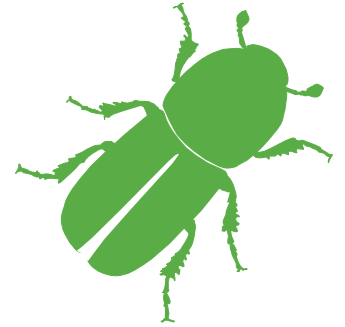


Plant Health News

Issue 31, March 2014



Plant Health (Fees) (Forestry) (Amendment) (England and Scotland) Regulations 2014

In Newsletter No. 30 issued in October 2013 we notified importers of a Consultation on proposals to further amend the controlled timber import inspection Fees Regulations 2006. The consultation period ran from 30th September until 8th November 2013.

Having considered the two responses to the consultation exercise the Forestry Commission's Plant Health Service will now implement the changes to its plant health charging regime via a further amendment to The Plant Health (Fees) (Forestry) Regulations 2006.

The tables below show, for comparison, the new rates and the current rates of a range of consignment volumes.

The new rates will apply to all inspections carried out from 7th April 2014 regardless of the actual date of arrival of controlled timber material. The amending legislation is the Plant Health (Fees) (Forestry) (Amendment) (England and Scotland) Regulations 2014 Statutory Instrument 2014 No.589

What's in this edition?

- Plant Health (Fees) (Forestry) (Amendment) (England and Scotland) Regulations 2014
- US National Hardwood Lumber Association Kiln Drying Certificates
- Inspections of wood packaging material imported from China with stone products
- Increased plant health checks at ports of entry and inland premises
- New Forestry Commission Plant Health Service telephone numbers for the Edinburgh Office
- Enquiries

Tables - New inspection fees compared to current fees

Example 1 New Charge – Sawn Timber Consignment Volume 30m ³		Example 1 Current Charge – Sawn Timber Consignment Volume 30m ³	
<u>Charge Description</u>	<u>Rate (£)</u>	<u>Charge Description</u>	<u>Rate (£)</u>
Documentary	7.20	Documentary	6.00
Identity Check	7.20	Identity Check	6.00
Plant Health Check	<u>31.20</u>	Plant Health Check	<u>26.00</u>
Total	<u>£45.60</u>	Total	<u>£38.00</u>

Example 2 New Charge		Example 2 Current Charge	
Sawn Timber Consignment Volume 95m ³		Sawn Timber Consignment Volume 95m ³	
<u>Charge Description</u>	<u>Rate (£)</u>	<u>Charge Description</u>	<u>Rate (£)</u>
Documentary	7.20	Documentary	6.00
Identity Check *	7.20	Identity Check *	6.00
“ “	7.20	“ “	6.00
“ “	7.20	“ “	6.00
“ “	7.20	“ “	6.00
Plant Health Check	<u>31.20</u>	Plant Health Check	<u>26.00</u>
Total	<u>£67.20</u>	Total	<u>£56.00</u>
*NB a further £7.20 charge is made for each additional 30m ³ (or part thereof) per container, wagon or truck in the consignment		*NB a further £6.00 charge is made for each additional 30m ³ (or part thereof) per container, wagon or truck in the consignment	

Example 3 New Charge		Example 3 Current Charge	
Sawn Timber Consignment Volume 1055m ³		Sawn Timber Consignment Volume 1055m ³	
<u>Charge Description</u>	<u>Rate (£)</u>	<u>Charge Description</u>	<u>Rate (£)</u>
Documentary	7.20	Documentary	6.00
Identity Check (>100m ³)	14.40	Identity Check (>100m ³)	12.00
Plant Health Check (<100m ³)	<u>31.20</u>	Plant Health Check (<100m ³)	<u>26.00</u>
Plant Health Check (>100m ³)	<u>238.75</u>	Plant Health Check (>100m ³)	<u>191.00</u>
Total	<u>£291.55</u>	Total	<u>£235.00</u>
$1055 - 100m^3 = 955m^3 \times £0.25 = £238.75$ £0.25 for each additional cubic metre of timber over 100m ³		$1055 - 100m^3 = 955m^3 \times £0.20 = £191.00$ £0.20 for each additional cubic metre of timber over 100m ³	

Example 4 New Charge		Example 4 Current Charge	
Woodshavings Consignment quantity 144,400kg		Woodshavings Consignment quantity 144,400kg	
<u>Charge Description</u>	<u>Rate (£)</u>	<u>Charge Description</u>	<u>Rate (£)</u>
Documentary	7.20	Documentary	6.00
Identity Check (x10)	72.00	Identity Check (x10)	60.00
Plant Health Check*	31.20	Plant Health Check*	26.00
Additional 119kg @ £0.49	<u>58.31</u>	Additional 119kg @ £0.49	<u>58.31</u>
Total	<u>£168.71</u>	Total	<u>£150.31</u>
Charge Total max	<u>£98.00</u>	Charge Total max	<u>£98.00</u>
* £31.20 per consignment up to 25000kg and £0.49 per 1000kg or part thereof thereafter, subject to a maximum charge of £98.00		* £26.00 per consignment up to 25000kg and £0.49 per 1000kg or part thereof thereafter, subject to a maximum charge of £98.00	

The new inspection fees only apply to imports of controlled material landing in England and Scotland. Currently there are no landings of controlled material into Wales, however, should that situation change the Welsh Assembly Government are aware of the amendment to the import fees and they may consider making similar changes to their plant health legislation at that time.

US National Hardwood Lumber Association Kiln Drying Certificates

Following representations to the European Commission by the US Department of Agriculture (USDA) on behalf of the US National Hardwood Lumber Association (NHLA) two derogations have been agreed and implemented to authorise EU member States' plant health authorities to accept Certificates of Kiln Drying, issued by approved sawmills in the USA for certain species of imported sawn, bark-free hardwood material, in place of a phytosanitary certificates.

The derogations ie Commission Implementing Decisions 2013/780/EU and 2013/782/EU only apply to bark-free sawn wood of oak (*Quercus*), Plane (*Platanus*), Hard, Rock or Sugar Maple (*Acer saccharum*) and Big-leaf Maple (*Acer macrophyllum*) originating in the USA. Two derogations were required as it was necessary for the EU to amend the Emergency Measures for *Phytophthora ramorum* (Commission Decision 2002/757/EC) in respect of the import of sawn oak from the USA in addition to providing a derogation for the landing requirements for wood of oak specified in Council Directive 2000/29/EC Annex IV.

These new derogations act in a similar way to those implemented in the early 1990's which permitted coniferous wood from the USA and Canada to be accompanied by industry or mill certificates when entering the EU instead of being accompanied with phytosanitary certificates. This certification system has worked well since the early 1990's and is now being extended to certain species of hardwood from the USA.

The new derogations can be viewed at the following websites –

Commission Implementing Decisions 2013/780/EU

<http://eur-lex.europa.eu/LexUriServ/LexUriServ.do?uri=OJ:L:2013:346:0061:0064:EN:PDF>

Commission Implementing Decisions 2013/782/EU

<http://eur-lex.europa.eu/LexUriServ/LexUriServ.do?uri=OJ:L:2013:346:0069:0072:EN:PDF>

Inspections of hardwoods specified in the derogations will be subjected to our usual documentary, identity and plant health checks however with immediate effect Certificates of Kiln Drying complying with the model certificate provided in the derogations can be accepted by inspectors instead of a phytosanitary certificate. Inspectors must insist on the receipt of original kiln drying certificates in the same way that they do for phytosanitary certificates.

A list of NHLA Kiln Drying Certificate Program members can be viewed on their website at http://impak.nhla.com/Public/NHLA_KD_Certified_Members.aspx

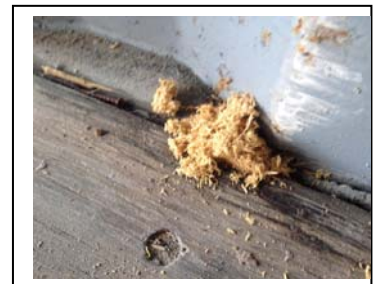
The Forestry Commission has a requirement to monitor and report to the EU on the usage and compliance with the derogations in July each year.

Inspections of wood packaging material imported from China with stone products

Since April 2013, in response to new EU legislation (Commission Implementing Decision 2013/92/EU), Forestry Commission Plant Health inspectors have been active at GB ports of landing (mainly large freight container terminals) in inspecting wood packaging material associated with imports of granite, marble, slate, flagstones and monumental and building stone materials. These materials are a known pathway from the introduction of quarantine tree pests such as the Asian Longhorn Beetle of which there was an outbreak in Kent in 2012.

Additionally, a number of other member states have in recent years been intercepting an increasing number of Asian Longhorn beetles in wood packaging material from China and this led to the implementation of the new legislation.

During their inspections of these stone consignments the inspectors look for tell tale signs of beetle larvae chewing and tunnelling their way through the wood packaging material, which can be in the form of holes in the wood or piles of sawdust on the container floor. The image opposite shows an example of such material as found in a consignment of granite from China intercepted at Southampton. In this particular interception the beetle larvae found was a Longhorn beetle larvae (*Cerambycidae*) and appropriate destruction action was taken to eliminate the plant health risk.



As at the end of September 2013 our inspectors had performed over 900 inspections of wood packaging material associated with stone material imported from China. To date we have notified China of 6 consignments which failed to meet our landing requirements.

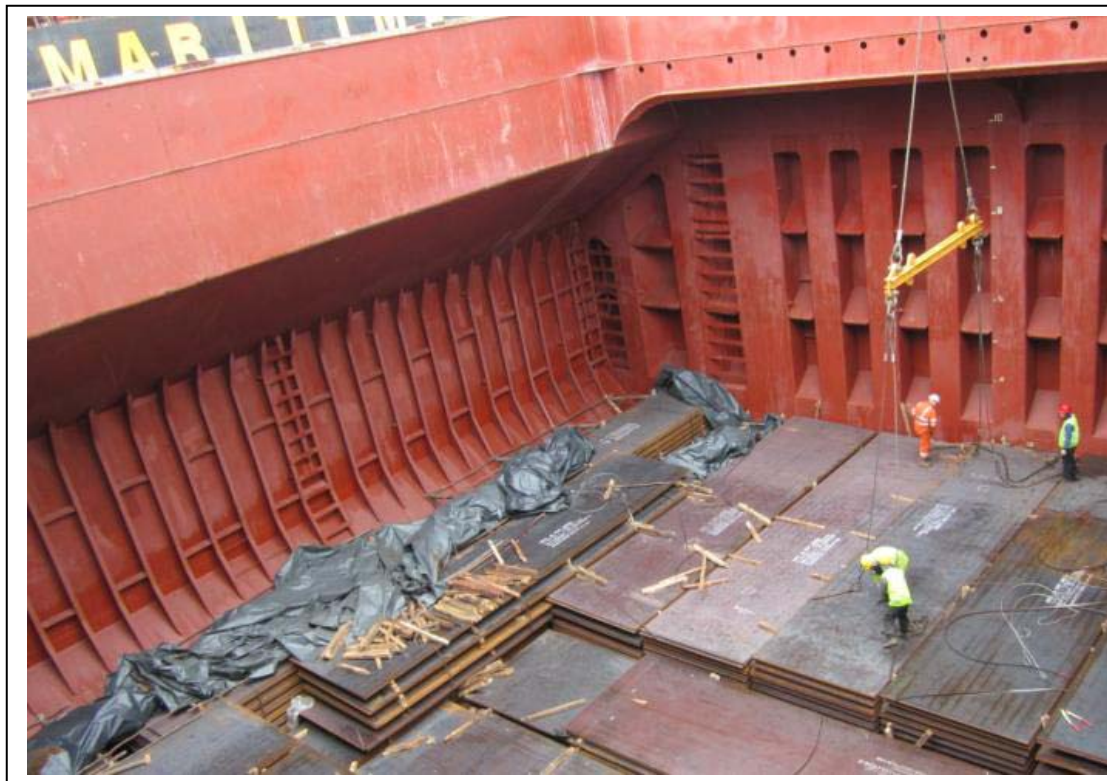
In June 2013 a member of the Forestry Commission Plant Health team was invited to take part in an EU Food and Veterinary Office (FVO) audit of wood packaging material controls in China. Details of the audit can be viewed on the European Commission's website using the following link –

http://ec.europa.eu/food/fvo/rep_details_en.cfm?rep_id=3204

Increased vigilance at ports of entry and inland premises

The increase in level of inspections of wood packaging material associated with stone products from China will continue in 2014/15. Defra's recent publication of the pest risk register (for details see - <http://www.fera.defra.gov.uk/plants/plantHealth/pestsDiseases/riskRegister.cfm>) has identified a number of pathways for tree pests in other forest products and Forestry Commission inspectors will be increasing their presence at all points of entry into the UK. Over the coming months our inspectors will be performing checks on wood packaging material and dunnage associated with other high risk commodities such as steel consignments and heavy machinery and equipment, woodchip material and certain items of wooden furniture either at ports, airports or inland premises.

The image below shows a consignment of steel in a ship's hold where hundreds of cubic metres of timber can be used to wedge and support the cargo. Often the timber used can be of low quality and is infested with quarantine pests as it is not compliant with ISPM15 treatment requirements. Inspecting the timber materials associated with goods such as this is an important and challenging part of our inspectors' work.



New Telephone contact numbers for the Forestry Commission Plant Health Service Team in the Edinburgh Office

The Forestry Commission's Edinburgh office has taken the opportunity to implement the public sector '0300' range of numbers already used by organisations such as Defra and the Scottish Government. The benefits of switching to 0300 numbers are –

- Customers are more likely to call us if the cost of doing so is transparent and low
- 0300 numbers are widely recognised by the public now and so they are in general happy to call them
- 0300 numbers also gives us a national non-geographical company image
- A professional inbound call handling call plan to control the number irrespective of our phone lines/system/size or location is always the best way to manage a large telephone system

As a result of the telephone system change a note of the new staff contact numbers is as follows –

John Morgan, Head of Plant Health – **0300 067 5170**

Nick Mainprize, Deputy Head of Plant Health – **0300 067 5149**

Stewart Snape, Policy Analyst, Monitoring and Biosecurity - **0300 067 5210**

Ian Brownlee, Operations Manager – **0300 067 5034**

Amanda Campbell, FRM Officer - **0300 067 5041**

Joanne McAuley, Admin Support - **0300 067 5155**

Veronica Cain, Admin Support - **0300 067 5039**

Nick Patterson Sharp, Admin Support - **0300 067 5129**

Enquiries

All enquiries relating to this newsletter should be directed to the relevant Plant Health Manager –

Steve Mears, Regional Manager (South) – Tel/Fax: 01507 328275 Mobile 07831 204324 timber imports to Humber, Felixstowe, Ipswich, Thamesport, Tilbury and Southampton, The Wash Ports, South West England, Bristol Channel and South Wales

Ian Murgatroyd, Regional Manager (North) Tel: 01698 222480 Mobile: 07767 251379 Fax: 01387 251491 timber imports to Liverpool, Tyneside, North Wales and Scotland

Ian Brownlee, Operations Manager Tel: 0300 067 5034 Mobile 07831 159014 Fax 0131-314-6148

Issued by: Forestry Commission's Plant Health Service, Silvan House, 231 Corstorphine Road, Edinburgh EH12 7AT
T: 0300 067 5155 **F:** 0131 314 6148 **E:** plant.health@forestry.gsi.gov.uk **W:** www.forestry.gov.uk/planthealth