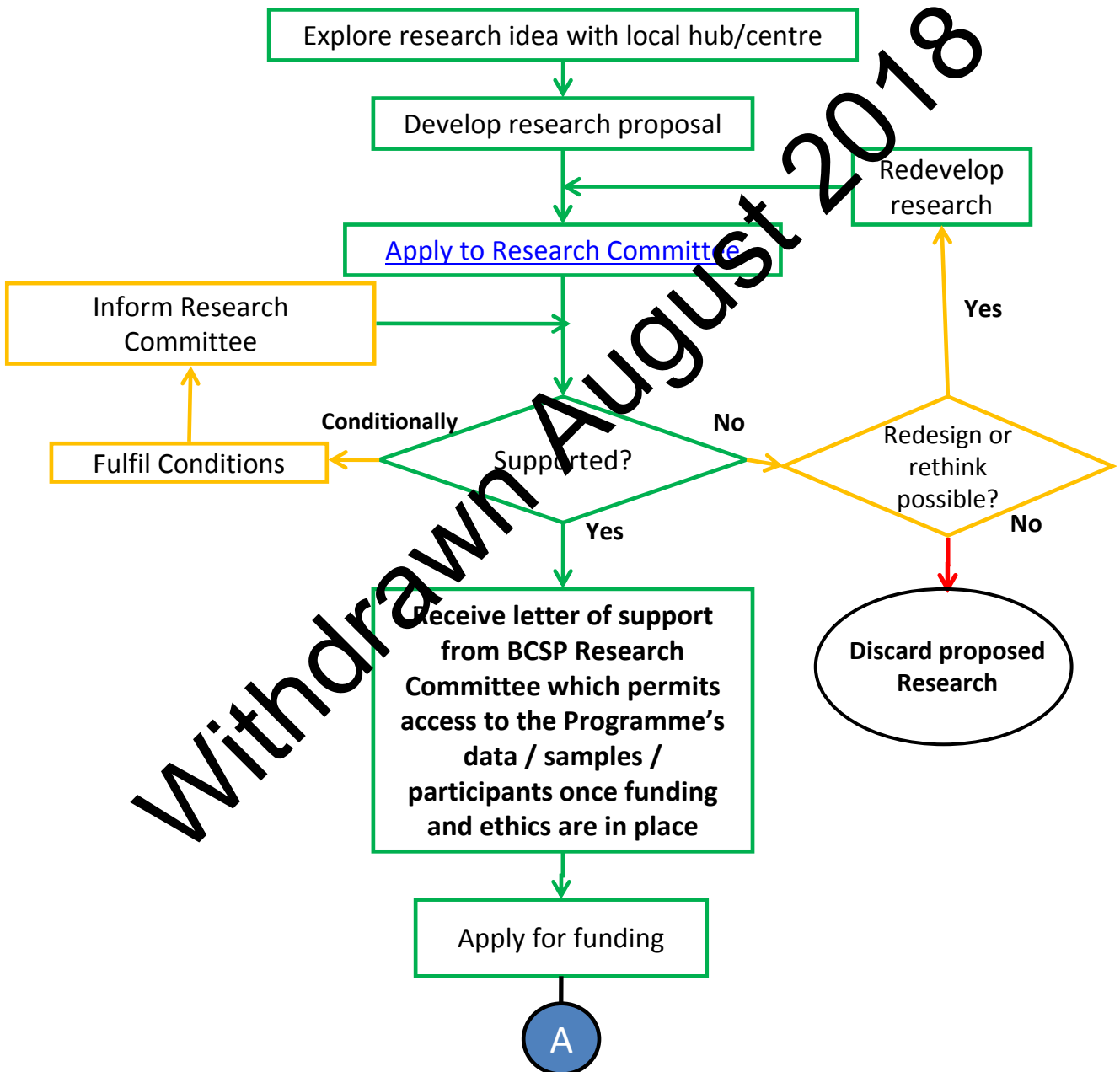
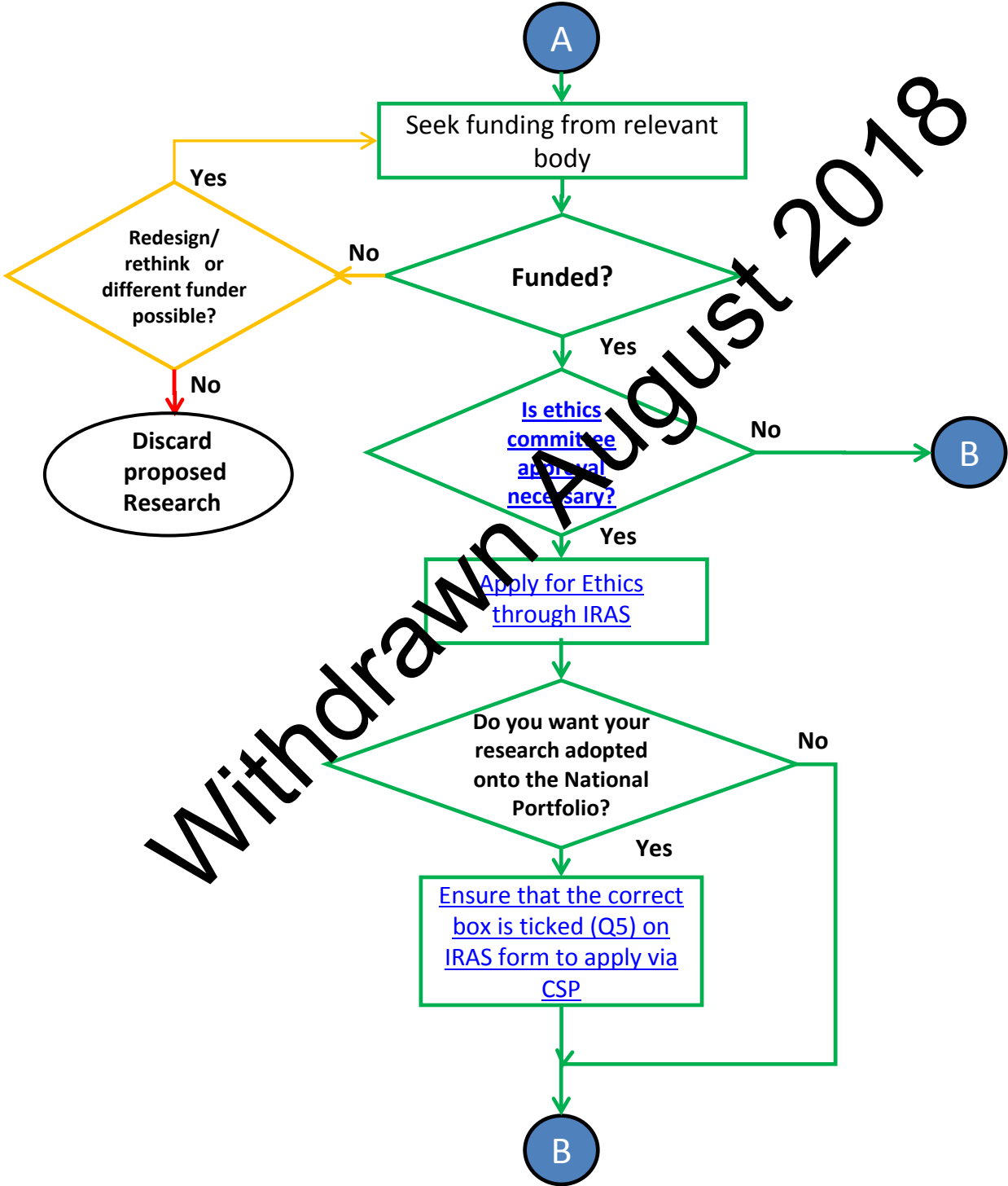


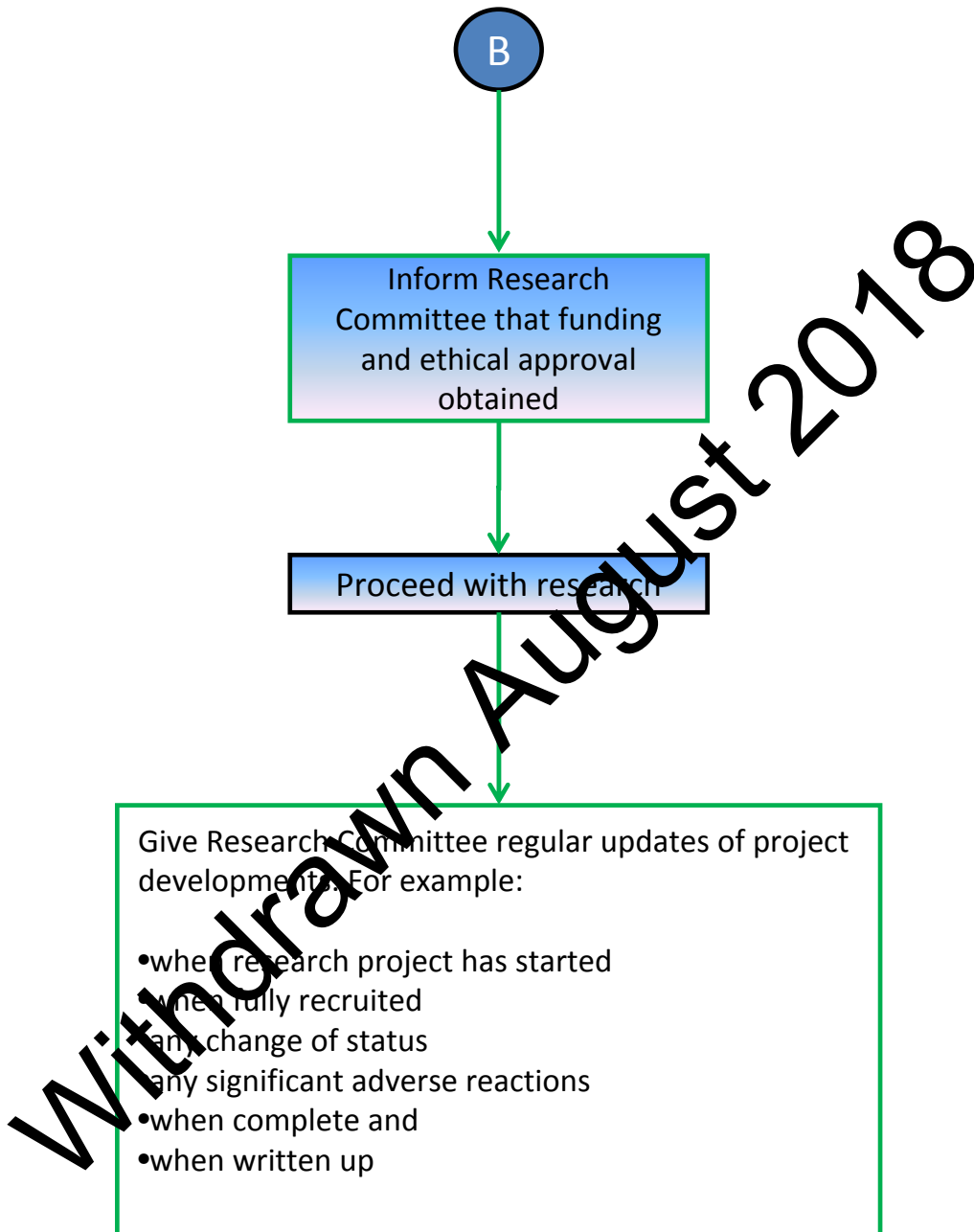
# Steps to gain access to NHS Bowel Cancer Screening Programme data/samples or participants for Research Projects



# Funding and ethics



Withdrawn August 2018



## Notes expanding the flowchart

- As the number of research projects grows, it is a good idea to make contact with a Screening Centre or Hub to sound out your research idea. The Research Committee tries to avoid project overlap and contamination. There is a list of projects that the Research Committee has supported and that are going ahead on the cancer screening website at <http://www.cancerscreening.nhs.uk/bowel/research-arising-nhsbcsp.pdf>
- Draw up research proposal. The requirements for submission to the NHS BCSP Research Committee are on the internet at <http://www.cancerscreening.nhs.uk/bowel/requirements-for-project-submission.pdf>
- Complete a pro forma:  
<http://www.cancerscreening.nhs.uk/bowel/submission-form-research-projects-v8.doc> or from [TJ.Day@cancerscreening.nhs.uk](mailto:TJ.Day@cancerscreening.nhs.uk)
- Submit to NHS BCSP Research Committee along with a one page summary and protocol/abstract (if available) by [the deadline](#) for the next meeting
- The Research Committee's [remit](#) details the committee's role which includes their aims to ensure that the research does not adversely affect the uptake, acceptability and delivery of the Bowel Cancer Screening Programme and to consider the scientific value and feasibility of each research application. This does not replace subsequent full scientific peer review that takes place. The Research Committee does not determine which projects will be funded but tries to ensure compatibility with the Screening Programme.
- Await outcome of Committee (two weeks after the meeting)
- If supported you will receive a letter of support from BCSP Research Committee.
- If supported with conditions attached, fulfil the conditions and inform NHS BCSP Research Committee that they are fulfilled. If they are satisfied, they will write a letter of support as above.
- If not supported then rethink and resubmit research, or abandon.
- **Once a research project is supported by the Research Committee, the letter of support permits access to the BCSP data or samples, once funding and ethical approval have been obtained.**

## A

## Funding

- Seek funding from relevant body
- If funded seek

### Ethical Review

- Before applying for ethical review, you will need to check whether your project is research, evaluation or clinical audit

see NRES leaflet 'defining research':

<http://www.nres.npsa.nhs.uk/EasySiteWeb/getresource.axd?AssetID=355&type=full&servicetype=Attachment>

- Check the legal and other requirements for the ethical review of your study
- seek ethics approval [via IRAS](#)
  
- If research required to be adopted onto the National Portfolio (and is funded by a NCRN partner funder)?
  
- apply via CSP, the NIHR Coordinated System for gaining NHS Permission  
<http://www.crncc.nihr.ac.uk/about-us/processes/csp>
  
- If ethics approval not required, check whether your study requires NHS R&D approval

Withdrawn August 2018

## B Funding and Ethics successful

If funding and ethical approval obtained, inform Research Committee before proceeding with research (this will enable the Committee to facilitate access to the BCSP data or samples).

Keep Research Committee informed of developments with research project, for example

- when research project has started
- fully recruited
- any change of status
- any significant adverse reactions
- when complete and
- when written up

Withdrawn August 2018