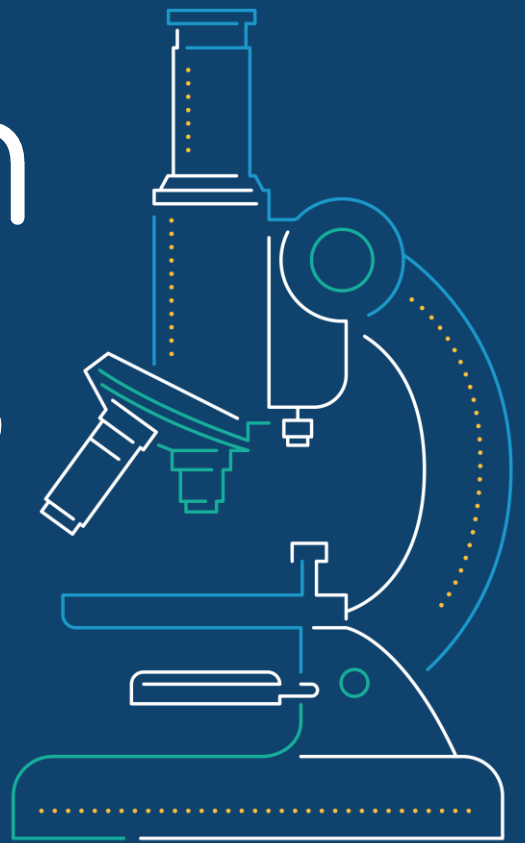




Research for health  
in humanitarian crises

| elrha

# R2HC Ebola Research Findings



## OVERVIEW

In response to the Ebola epidemic in West Africa in 2014, R2HC launched an emergency call for short-term research in August 2014. The intention was to fund robust research designed to contribute to the effectiveness of the outbreak response and to draw lessons for dealing with future outbreaks of Ebola and other communicable diseases.

This document notes the key research findings and associated products or publications for each of the studies funded through the above call. The eight funded projects were:

	<b>Title</b>	<b>Lead institution</b>	<b>Research</b>	<b>Public health</b>
<b>1</b>	Ebola Response Anthropology Platform	LSHTM / University of Sussex	Anthropology	Public engagement / Public information
<b>2</b>	Messaging to promote Ebola treatment-seeking behaviour	Umeå University	Participatory approach using qualitative	Public engagement / Public information
<b>3</b>	Point-of-care diagnostic testing for EVD	Institut Pasteur de Dakar	Diagnostics	Laboratory functions
<b>4</b>	EbolaCheck – rapid point-of-need EVD diagnostics	University of Westminster	Diagnostics	Laboratory functions
<b>5</b>	Predicting the spread of EVD	Oxford University	Modelling	Epidemiology
<b>6</b>	Modelling Ebola in West Africa	London School of Hygiene and Tropical Medicine (LSHTM)	Modelling	Epidemiology
<b>7</b>	Participatory behavioural change for infection prevention and control	International Rescue Committee	Participatory mixed methods approach	Operations-ready workers and volunteers
<b>8</b>	How traditional healers understand and deal with EVD	Platform for Dialogue and Peace (P4DP)	Participatory action research	Operations-ready workers and volunteers

---

## Ebola Response Anthropology Platform

---

*Grant awarded:* £297,160

---

*Lead organisation:* London School for Hygiene and Tropical Medicine/University of Sussex

---

*Partners:* University of Sussex, Institute of Development Studies, University of Exeter

---

*Project length:* Nov-14 to Nov-15

---

*Study location(s):* Sierra Leone

---

*Principal Investigator:* Melissa Parker

---

*Objective:* To develop an online resource portal to enable key stakeholders, practitioners and researchers to access information, findings and background resources about the socio-cultural, historical, economic and political dimensions of Ebola.

---

An online Anthropology Platform resource porta is available:

<http://www.ebola-anthropology.net/>

The portal provides anthropological advice on how to engage with socio-cultural and political dimensions of Ebola outbreaks and build locally-appropriate interventions. Key topics include:

- Key findings/  
outcomes*
- Identifying and diagnosing cases
  - Management of the dead
  - Caring for the sick
  - Clinical trials/research
  - Preparedness
  - Communication and engagement

Since the 2014 Ebola outbreak, LSHTM and IDS have taken steps to develop an Epidemic Response Anthropology Platform (ERAP). This was launched in June 2018:-

<https://www.epidemicresponse.net/>

---

*Key outputs* Multiple journal articles are available in the Annex

---

## Development of a Social Marketing Strategy to Promote Ebola treatment-seeking behaviour in Sierra Leone

<i>Grant awarded:</i>	£158,547
<i>Lead organisation:</i>	Umeå University
<i>Partners:</i>	Medical Research Centre in Sierra Leone, Centre for Health Research and Training in Sierra Leone
<i>Project length:</i>	Jan-15 to Apr-15
<i>Study location(s):</i>	Sierra Leone
<i>Principal Investigator:</i>	John Kinsman
<i>Objective:</i>	To design effective messaging to promote Ebola treatment-seeking behaviour in Sierra Leone, taking into consideration gender and urban-rural contexts
<i>Key findings/outcomes</i>	<p>Set of messages on 14 topics developed. Each message included details of its rationale, audience, dissemination channels, messengers, and associated operational issues that needed to be taken into account.</p> <p>Recommendations for future emergencies included:</p> <ul style="list-style-type: none"> <li>- importance of embedding systematic, iterative qualitative research fully into the message development process;</li> <li>- communication of the subsequent messages through a two-way dialogue with communities, using trusted messengers;</li> <li>- engagement to ensure national ownership of the messages, and to maximize the chance of their being utilised.</li> </ul>
<i>Key outputs</i>	<p>A set of empirically-derived Ebola messages relevant for Sierra Leone (April 2015) but able to be adapted for other EVD/related outbreaks: <a href="https://bit.ly/2IKM5sE">https://bit.ly/2IKM5sE</a></p> <p>Journal article with key findings (other articles available in Annex): <a href="http://www.elrha.org/wp-content/uploads/2017/08/Ebola-messaging-in-Sierra-Leone.pdf">http://www.elrha.org/wp-content/uploads/2017/08/Ebola-messaging-in-Sierra-Leone.pdf</a></p>

## Point-of-care EVD diagnostic testing for Ebola treatment centres

<i>Grant awarded:</i>	£509,646
<i>Lead organisation:</i>	Insitut Pasteur de Dakar
<i>Partners:</i>	University of Stirling, Robert Koch Institute, German Primate Center, Twist Dx
<i>Project length:</i>	Dec-14 to Dec-15
<i>Study location(s):</i>	Guinea
<i>Principal Investigator:</i>	Amadou A. Sall,
<i>Methodology:</i>	Diagnostic tool
<i>Objective:</i>	Development and deployment of a diagnostic tool for Ebola virus detection
<i>Key findings/ outcomes</i>	<p>Diagnostic tool developed. The mobile laboratory (using glovebox, DiaS, SE and RT-RPA) is a good solution for decentralised biosafe diagnosis of Ebola virus. The small mobile laboratory is able to be run by local teams and represents a sustainable contribution to future outbreak control.</p> <p>The 'lab in a suitcase' has been deployed in DRC during the 2018 Ebola outbreak.</p>
<i>Key outputs</i>	<p>Journal article with key findings:  <a href="https://bit.ly/1MkMuA7">https://bit.ly/1MkMuA7</a></p>

## EbolaCheck: Rapid Point-of-Need EVD Diagnostics

*Grant awarded:* £620,655

*Lead organisation:* University of Westminster

*Partners:* BioGene Ltd., US Army Medical Research Institute of Infectious Diseases, Kwame Nkrumah University of Science and Technology, Public Health England.

*Project length:* Nov-14 to Nov-15

*Study location(s):* West Africa

*Principal Investigator:* Sterghios Moschos,

*Objective:* To develop a diagnostic tool to identify active Ebola virus infection in unprocessed blood

*Key findings/outcomes*

Development of a point-of-need molecular diagnostic device to identify active Ebola virus infection in unprocessed blood. The device enables a fast, laboratory infrastructure-free, minimal risk and simple standard operating procedure suited to frontline, field use.

The diagnostic is being used to detect multiple haemorrhagic fevers, including Ebola, and its utility for use in differential diagnosis of venomous animal bite injuries is being explored and for pharmaceutical research.

*Key outputs*

Journal article with key findings:  
<https://rsc.li/2KIBrmQ>

## Predicting the geographic spread of Ebola virus disease in West Africa

<i>Grant awarded:</i>	£95,179
<i>Lead organisation:</i>	University of Oxford
<i>Partners:</i>	Spatial Ecology and Epidemiology Group
<i>Project length:</i>	2014–15
<i>Study location(s):</i>	West Africa
<i>Principal Investigator:</i>	Simon Hay
<i>Objective:</i>	To predict the geographic spread of EVD through mapping
<i>Key findings/ outcomes</i>	<p>Using data on human mobility, high resolution maps were developed to make quantitative predictions of Ebola disease. The maps were continuously updated as data became available and automatically disseminated via an online geographic information system, alongside other spatial information, to guide control of the ongoing outbreak.</p> <p>The core movement modelling software developed was later used to assess risk of spread of Chikungunya in Brazil <a href="https://doi.org/10.1186/s12916-015-0348-x">https://doi.org/10.1186/s12916-015-0348-x</a> and in a study looking at the spread of invasive mosquitoes and outbreaks of dengue among indigenous communities in Australia.</p>
<i>Key outputs</i>	<p>Ebola movement modelling software: <a href="https://github.com/SEEG-Oxford/ebola-python-pipeline">https://github.com/SEEG-Oxford/ebola-python-pipeline</a></p> <p>Package for the analysis of movement data in disease modelling and mapping: <a href="https://github.com/SEEG-Oxford/movement">https://github.com/SEEG-Oxford/movement</a></p>

## Modelling Ebola in West Africa

*Grant awarded:* £258,922

*Lead organisation:* London School of Hygiene and Tropical Medicine

*Partners:* Médecins Sans Frontières, Save The Children, World Health Organization

*Project length:* Dec-14 to Dec-15

*Study location(s):* Sierra Leone

*Principal Investigator:* John Edmunds,

*Objective:* To develop models to project transmission of EVD

*Key findings/  
outcomes*

A modelling tool was developed which helped characterise the transmission dynamics of EVD, project the future course of the epidemic, and estimate the impact of alternative control policies.

Real-time modelling was key to tracking changes in the reproduction number and helping to inform bed capacity planning in the context of the rapidly changing EVD outbreak in West Africa.

*Key outputs*

Journal article with key findings (other articles available in Annex):

<https://bit.ly/1DZ3dmF>



## Participatory Behavioural Change to Reinforce Infection Prevention and Control for Ebola Virus Disease in Sierra Leone

<i>Grant awarded:</i>	£185,621
<i>Lead organisation:</i>	International Rescue Committee UK
<i>Partners:</i>	Durham University, Charité – Universitätsmedizin Berlin, University of Sierra Leone, Kenema District Health Team
<i>Project length:</i>	Nov-14 to May-15
<i>Study location(s):</i>	Sierra Leone
<i>Principal Investigator:</i>	Dr Lara Ho
<i>Objective:</i>	To improve Ebola infection prevention and control in primary healthcare facilities in Sierra Leone during the EVD outbreak
<i>Key findings/ outcomes</i>	Interviews/observations with Health Care Workers found favourable attitudes towards Infection Prevention Control (IPC) and gaps in practice. To make all facilities IPC compliant, socio-behavioural improvements and a secure supply chain were essential.
<i>Key outputs</i>	Journal article with key findings (other articles available in Annex): <a href="http://gh.bmj.com/content/1/4/e000103">http://gh.bmj.com/content/1/4/e000103</a>

## Role of Traditional Healers in Transmission and Mitigation of the Ebola Outbreak

<i>Grant awarded:</i>	£84,826
<i>Lead organisation:</i>	Platform for Dialogue and Peace (P4DP)
<i>Partners:</i>	Ministry of Internal Affairs , CSO Secretariat on Natural Resources Management
<i>Project length:</i>	6 months
<i>Study location(s):</i>	Sierra Leone, Liberia
<i>Principal Investigator:</i>	James Shiloe
<i>Objective:</i>	To investigate the role of Traditional Healers in transmission and mitigation of the Ebola outbreak in Liberia
<i>Key findings/ outcomes</i>	Research assisted in developing a stronger understanding of alternative medicines and their public health potential.
<i>Key outputs</i>	Information available on the project website: <a href="http://www.elrha.org/projects/platform-for-dialogue-and-peace/">http://www.elrha.org/projects/platform-for-dialogue-and-peace/</a>

## Annex 1 – list of publications

## R2HC Outputs: Peer reviewed publications – Ebola Call

Lead research partner	Publication title	Authors	Date Published	Journal/ book	Link
Westminster Uni	Field-deployable, Quantitative, Rapid Identification of Active Ebola Virus Infection in Unprocessed Blood	Shah, Edge, Bruce, Bentley, Pitman, Moschos, Burton, Norwood, Tyler, Nazareth, Usher, Cleaver, Lee, Easterbrook, Lee, Wright, Richards	25/09/2017	Chemical Science	<a href="http://pubs.rsc.org/en/content/articlelanding/2017/sc/c7sc03281a#!divAbstract">http://pubs.rsc.org/en/content/articlelanding/2017/sc/c7sc03281a#!divAbstract</a>
Umea University Sweden	Development of a set of community-informed Ebola messages for Sierra Leone	Kinsman, Bruijne, Jalloh, Harris, Abdullah, Boye-Thompson, Sankoh, Jalloh, Jalloh-Vos	07/08/2017	PLOS – Neglected tropical diseases	<a href="http://www.elrha.org/wp-content/uploads/2017/08/Ebola-messaging-in-Sierra-Leone.pdf">http://www.elrha.org/wp-content/uploads/2017/08/Ebola-messaging-in-Sierra-Leone.pdf</a>
IRC	We and the nurses are now working with one voice”: How community leaders and health committee members describe their role in Sierra Leone’s Ebola response	McMahon, Ho, Scott, Brown, Miller, Ansumana, Ratnayake	18/07/2017	BMC Health Services Research	<a href="https://bmchealthservres.biomedcentral.com/articles/10.1186/s12913-017-2414-x">https://bmchealthservres.biomedcentral.com/articles/10.1186/s12913-017-2414-x</a>
LSHTM	Emerging disease or emerging diagnosis? Lassa fever and Ebola in West Africa	Wilkinson	25/05/2017	Anthropological Quarterly	<a href="http://www.ids.ac.uk/publication/emerging-disease-or-emerging-diagnosis-lassa-fever-and-ebola-in-west-africa">http://www.ids.ac.uk/publication/emerging-disease-or-emerging-diagnosis-lassa-fever-and-ebola-in-west-africa</a>
LSHTM	Epistemologies of Ebola: reflections on the experience of the Ebola Response Anthropology Platform’	Martineau, Wilkinson, Parker	25/05/2017	Anthropological Quarterly	<a href="http://www.ids.ac.uk/publication/epistemologies-of-ebola-reflections-on-the-experience-of-the-ebola-response-anthropology-platform">http://www.ids.ac.uk/publication/epistemologies-of-ebola-reflections-on-the-experience-of-the-ebola-response-anthropology-platform</a>

LSHTM	Engaging ‘communities’: anthropological insights from the West African Ebola epidemic	Wilkinson, Parker, Martineau, Leach	10/04/2017	The Royal Society	<a href="http://rstb.royalsocietypublishing.org/content/372/1721/20160305">http://rstb.royalsocietypublishing.org/content/372/1721/20160305</a>
IRC	Improving Ebola infection prevention and control in primary healthcare facilities in Sierra Leone: a single-group pretest post-test, mixed-methods study	Ratnayake, Ho, Ansumana, Brown, Borchert, Miller, Kratz, McMahon, Sahr	2/12/2016	BMJ Global Health	<a href="http://gh.bmj.com/content/1/4/e000103">http://gh.bmj.com/content/1/4/e000103</a>
LSHTM	Comparing social resistance to Ebola response between Sierra Leone and Guinea suggests explanations lie in political configurations not culture	Wilkinson, Fairhead	09/11/2016	Critical Public Health	<a href="http://www.tandfonline.com/doi/full/10.1080/09581596.2016.1252034">http://www.tandfonline.com/doi/full/10.1080/09581596.2016.1252034</a>
LSHTM	Ebola: how a people’s science helped end an epidemic	Richards	September 2016	Richards, P. 2016  Ebola: how a people’s science helped end an epidemic	<a href="https://www.amazon.co.uk/Ebola-Peoples-Science-Epidemic-Arguments/dp/1783608587">https://www.amazon.co.uk/Ebola-Peoples-Science-Epidemic-Arguments/dp/1783608587</a>
IRC-UK	Healthcare providers on the frontlines: a qualitative investigation of the social and emotional impact of delivering health services during Sierra Leone’s Ebola epidemic	McMahon, Ho, Brown, Miller, Ansumana, Kennedy	September 2016	Health Policy & Planning	<a href="http://heapol.oxfordjournals.org/content/31/9/1232">http://heapol.oxfordjournals.org/content/31/9/1232</a>
LSHTM	Biosocial Approaches to the Control of Neglected Tropical Diseases	Parker, Polman, Allen	18/07/2016	Journal of Biosocial Science	<a href="https://www.cambridge.org/core/journals/journal-of-biosocial-science/article/biosocial-approaches-to-the-control-of-neglected-tropical-">https://www.cambridge.org/core/journals/journal-of-biosocial-science/article/biosocial-approaches-to-the-control-of-neglected-tropical-</a>

					<a href="https://doi.org/10.1017/S0950268815002266">diseases/18E96B88B9E226E043713AF4EBC92486</a>
LSHTM	Neglected Tropical Diseases in Biosocial Perspective	Parker, Polman, Allen	July 2016	Journal of Biosocial Science	<a href="https://www.cambridge.org/core/journals/journal-of-biosocial-science/article/neglected-tropical-diseases-in-biosocial-perspective/7D0EE44163FFCB090A1D4B4B50C7FBB5">https://www.cambridge.org/core/journals/journal-of-biosocial-science/article/neglected-tropical-diseases-in-biosocial-perspective/7D0EE44163FFCB090A1D4B4B50C7FBB5</a>
LSHTM	The Neglected Dimension of Global Security: a framework to counter infectious disease crises.	GHRF Commission (Commission on a Global Health Risk Framework for the Future)	June 2016	National Academies Press	<a href="http://readbulk.xyz/neglected-dimension-global-security-infectious/">http://readbulk.xyz/neglected-dimension-global-security-infectious/</a>
LSHTM	Zoonotic disease: who gets sick, and why? Explorations from Africa	<a href="#">Dzingirai, Bett, Lawson, Mangwany a, Scoones, Waldman</a> , Wilkinson, Leach, Winnebah	April 2016	Critical Public Health	<a href="http://www.tandfonline.com/doi/abs/10.1080/09581596.2016.1187260?journalCode=ccph20">http://www.tandfonline.com/doi/abs/10.1080/09581596.2016.1187260?journalCode=ccph20</a>
LSHTM	Beyond biosecurity: the politics of Lassa fever in Sierra Leone	Wilkinson	February 2016	One Health, Science, Politics and Zoonotic Disease in Africa, Earthscan	Beyond biosecurity: the politics of Lassa fever in Sierra Leone (book)
LSHTM	Rat-atouille: a mixed method study to characterize rodent hunting and consumption in the context of Lassa fever	Bonwitt, <a href="#">Kelly</a> , Ansumana, Agbla, Sahr, Saez, Borchert, Kock, Fichet-Calvet	February 2016	Ecohealth	<a href="http://www.ncbi.nlm.nih.gov/pubmed/26895631">http://www.ncbi.nlm.nih.gov/pubmed/26895631</a>
LSHTM	The limits to rapid response: Ebola and structural violence in West Africa	Bardosh, Leach, Wilkinson	February 2016	'One Health, Science, Politics and Zoonotic Disease	<a href="http://steps-centre.org/publication/one-health-science-politics-and-zoonotic-disease-in-africa-2/">http://steps-centre.org/publication/one-health-science-politics-and-zoonotic-disease-in-africa-2/</a>

				in Africa', Bardosh, K. (ed), Earthscan	
LSHTM	Effectiveness of ring vaccination as a control strategy for Ebola virus disease	Kucharski, Eggo, Watson, Camacho, Funk, Edmunds	January 2016	Emergen cy Infectiou s Diseases	<a href="http://wwwnc.cdc.gov/eid/article/22/1/15-1410_article">http://wwwnc.cdc.gov/eid/article/22/1/15-1410_article</a>
LSHTM	Charismatic Models and Compassionate Research: The Making of a Global Health Emergency	Kelly		Economy and Society	N/A
LSHTM	An Anthropology of Light and Zoonosis: Shadows of Home	Kelly		Medical Anthropol ogy Quarterl y	N/A
Oxford University	Predicting the geographic spread of Ebola Virus Disease in West Africa	Hay, et al.		Procedi ngs of the National Academy of Science of the USA	N/A
LSHTM	Measuring the impact of Ebola control measures in Sierra Leone	Kucharski, Camac ho, Flasche, Glove r, Edmunds, Funk	October 2015	Proc Natl Acad Sci USA	<a href="http://www.ncbi.nlm.nih.gov/pubmed/26460023">http://www.ncbi.nlm.nih.gov/pubmed/26460023</a>
LSHTM	Ebola Virus Disease in the Democratic Republic of the Congo : 1976– 2014	Rosello, Mossoko, Flasche, Hoek, Mbala, Camacho, Funk, Kucharski, Ilunga, Edmunds, Piot, Baguelin, Tamfum	November 2015	Elife	<a href="https://elifesciences.org/content/4/e09015">https://elifesciences.org/content/4/e09015</a>

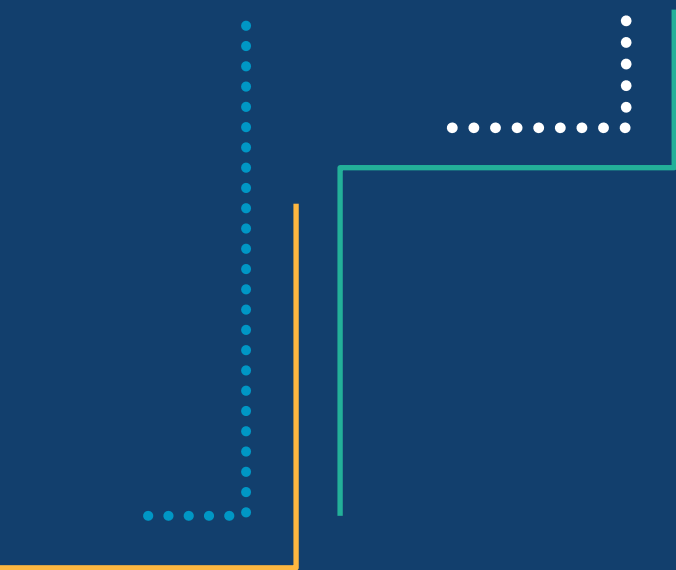
LSHTM	Duration of Ebola virus RNA persistence in semen of survivors : population-level estimates and projections	Eggo, Watson, Camacho, Kucharski, Funk, Edmunds	December 2015	Euro Surveillance	<a href="http://www.eurosurveillance.org/ViewArticle.aspx?ArticleId=21326">http://www.eurosurveillance.org/ViewArticle.aspx?ArticleId=21326</a>
LSHTM	Estimating the probability of demonstrating vaccine efficacy in the declining Ebola epidemic : a Bayesian modelling approach	Camacho, Eggo, Funk, Watson, Kucharski, Edmunds	December 2015	BMJ	<a href="http://bmjopen.bmj.com/content/5/12/e009346?cpetoc&amp;trendmd-shared=1">http://bmjopen.bmj.com/content/5/12/e009346?cpetoc&amp;trendmd-shared=1</a>
Institute Pasteur	Development and deployment of a rapid recombinase polymerase amplification Ebola virus detection assay in Guinea in 2015	Faye, Soropogui, Patel, El Wahed Loucoubar, Fall, Kiory, Magassouba, Keita, Kondé, Diallo, Koivogui, Karlberg, Mirazimi, Nentwich, Piepenburg, Niedrig, Weidmann, Sall.	November 2015	Euro Surveillance	<a href="http://www.eurosurveillance.org/ViewArticle.aspx?ArticleId=21289">http://www.eurosurveillance.org/ViewArticle.aspx?ArticleId=21289</a>
LSHTM	Ebola in Meliandou: Tropes of 'sustainability' at Ground Zero	Fairhead, Millimouno	2015	Fairhead, J and D. Millimouno. 2015. Ebola in Meliandou: Tropes of 'sustainability' at Ground Zero.	In: Brightman, M & Lewis J (eds.) Anthropological Visions of Sustainable Futures London: Palgrave
LSHTM	Temporal Changes in Ebola Transmission in Sierra Leone and Implications for Control Requirements: a Real-time Modelling Study	Camacho, Kucharski, Aki-Sawyers, White, Flasche, Baguelin, Pollington, Carney, Glover, Smout, Tiffany, Edmunds, Funk,	February 2015	PLOS	<a href="http://currents.plos.org/outbreaks/article/temporal-changes-in-ebola-transmission-in-sierra-leone-and-implications-for-control-requirements-a-real-time-modelling-study/">http://currents.plos.org/outbreaks/article/temporal-changes-in-ebola-transmission-in-sierra-leone-and-implications-for-control-requirements-a-real-time-modelling-study/</a>

LSHTM	Evaluation of the benefits and risks of introducing Ebola community care centers, Sierra Leone. Emerg Infect Dis	Kucharski, Camacho, Checchi, Waldman, Grais, Cabrol, Briand, Baguelin, Flashe, Funk, Edmunds	March 2015	Emerging Infectious Diseases	<a href="https://www.ncbi.nlm.nih.gov/pmc/articles/PMC4344293/">https://www.ncbi.nlm.nih.gov/pmc/articles/PMC4344293/</a>
LSHTM	The "Ebola ça suffit" Vaccine Trial Team. Ring vaccination for Ebola : a novel approach to evaluate vaccine efficacy and effectiveness during an outbreak	Henao-Restrepo	June 2015	BMJ	<a href="http://www.bmj.com/content/351/bmj.h3740">http://www.bmj.com/content/351/bmj.h3740</a>
LSHTM	A systematic literature review of the quality of evidence for injury and rehabilitation interventions in humanitarian crises	Smith, Roberts, Knight, et al.	August 2015	Springer	<a href="http://link.springer.com/article/10.1007/s00038-015-0723-6">http://link.springer.com/article/10.1007/s00038-015-0723-6</a>
LSHTM	The Effectiveness of Interventions for Non-Communicable Diseases in Humanitarian Crises: A Systematic Review	Ruby, Knight, Perel, Blanchet, Roberts	September 2015	PLOS	<a href="http://journals.plos.org/plosone/article?id=10.1371/journal.pone.0138303">http://journals.plos.org/plosone/article?id=10.1371/journal.pone.0138303</a>
LSHTM	Evidence on the Effectiveness of Water, Sanitation, and Hygiene (WASH) Interventions on Health Outcomes in Humanitarian Crises: A Systematic Review	Ramesh, Blanchet, Ensink, Roberts	September 2015	PLOS	<a href="http://journals.plos.org/plosone/article?id=10.1371/journal.pone.0124688">http://journals.plos.org/plosone/article?id=10.1371/journal.pone.0124688</a>
LSHTM	Systematic review of the evidence on the effectiveness of sexual and reproductive health interventions in humanitarian crises	Warren, Post, Hossain, Blanchet, Roberts	September 2015	BMJ Open	<a href="http://bmjopen.bmj.com/content/5/12/e008226.full.pdf+html">http://bmjopen.bmj.com/content/5/12/e008226.full.pdf+html</a>
LSHTM	Extending the 'social': Anthropological contributions to the study of viral haemorrhagic fevers	Brown, Kelly, Saez, Fichet-Calvet, Ansumana, Bonwitt,	April 2015	PLOS Neglected Tropical Diseases	<a href="http://www.ncbi.nlm.nih.gov/pmc/articles/PMC4400098/">http://www.ncbi.nlm.nih.gov/pmc/articles/PMC4400098/</a>



		Magassouba, Sahr, Borchert			
LSHTM	Understanding social resistance to Ebola response in Guinea	Fairhead	April 2015	African Studies Review	<a href="http://www.ebola-anthropology.net/wp-content/uploads/2015/04/Fairhead-EbolaASRFinalSubmissionWeb.pdf">http://www.ebola-anthropology.net/wp-content/uploads/2015/04/Fairhead-EbolaASRFinalSubmissionWeb.pdf</a>
LSHTM	The Ebola crisis and post-2015 development	Leach	August 2015	Journal of International Development	<a href="http://onlinelibrary.wiley.com/doi/10.1002/jid.3112/abstract">http://onlinelibrary.wiley.com/doi/10.1002/jid.3112/abstract</a>
LSHTM	'Lassa Fever: The politics of an emerging disease and the scope for One Health'	Wilkinson	March 2015	STEPS Working paper 83	<a href="http://steps-centre.org/publication/lassa-fever-the-politics-of-an-emerging-disease-and-the-scope-for-one-health-2/">http://steps-centre.org/publication/lassa-fever-the-politics-of-an-emerging-disease-and-the-scope-for-one-health-2/</a>
LSHTM	Efficacy and effectiveness of an rVSV-vectored vaccine expressing Ebola surface glycoprotein : interim results from the Guinea ring vaccination cluster-randomised trial	Henao-Restrepo et al.	August 2015	Lancet	<a href="http://www.thelancet.com/journals/lancet/article/PIIS0140-6736%2815%2961117-5/abstract">http://www.thelancet.com/journals/lancet/article/PIIS0140-6736%2815%2961117-5/abstract</a>
LSHTM	The ring vaccination trial : a novel cluster randomised controlled trial design to evaluate vaccine efficacy and effectiveness during outbreaks, with special reference to Ebola	Henao-Restrepo	July 2015	BMJ	<a href="http://www.bmj.com/content/351/bmj.h3740">http://www.bmj.com/content/351/bmj.h3740</a>
LSHTM	Material Proximities and Hotspots: Towards an Anthropology of Viral Haemorrhagic Fevers 2014	Brown, Kelly	April 2014	Medical Anthropology Quarterly	<a href="http://www.ncbi.nlm.nih.gov/pubmed/24752909">http://www.ncbi.nlm.nih.gov/pubmed/24752909</a>

LSHTM	Ebola: limitations of correcting misinformation	Chandler, Fairhead, Kelly, Leach, Martineau, Mokuwa, Parker, Richards, Wilkinson	December 2014	The Lancet	<a href="http://www.thelancet.com/journals/lancet/article/PIIS0140-6736(14)62382-5/fulltext?rss=yes">http://www.thelancet.com/journals/lancet/article/PIIS0140-6736(14)62382-5/fulltext?rss=yes</a>
LSHTM	Ebola, Running Ahead	Kelly	December 2014	LIMN	<a href="http://limn.it/ebola-running-ahead/">http://limn.it/ebola-running-ahead/</a>
LSHTM	Notes from Case Zero: Anthropology in the Times of Ebola	Saez, Kelly, Brown	September 2014	Somatosphere	<a href="http://somatosphere.net/2014/09/notes-from-case-zero-anthropology-in-the-time-of-ebola.html">http://somatosphere.net/2014/09/notes-from-case-zero-anthropology-in-the-time-of-ebola.html</a>
LSHTM	Social pathways for Ebola Virus Disease in rural Sierra Leone, and some implications for containment	Richards, Amara, Ferme, Kamara, Mokuwa, Sheriff, Suluku, Voor	October 2014	PLOS	<a href="http://blogs.plos.org/speakingofmedicine/2014/10/31/social-pathways-ebola-virus-disease-rural-sierra-leone-implications-containment/">http://blogs.plos.org/speakingofmedicine/2014/10/31/social-pathways-ebola-virus-disease-rural-sierra-leone-implications-containment/</a>
LSHTM	Ebola: myths, realities & structural violence	Wilkinson, Leach	December 2014	African Affairs	<a href="http://afraf.oxfordjournals.org/content/early/2014/12/04/afraf.adu080">http://afraf.oxfordjournals.org/content/early/2014/12/04/afraf.adu080</a>



**NHS**  
National Institute for  
Health Research