



Public Health
England

Protecting and improving the nation's health

Suspected and laboratory confirmed reported norovirus outbreaks in hospitals: outbreaks occurring in weeks 18 to 21, 2018

Health Protection Report
Volume 12 Number 21
15 June 2018

Suspected and laboratory confirmed reported norovirus outbreaks in hospitals: outbreaks occurring in weeks 18 to 21, 2018 (England)

The hospital norovirus outbreak reporting scheme (HNORS) recorded 22 outbreaks occurring between weeks 18 to 21, 2018, 21 of which (95 per cent) led to ward/bay closures or restriction to admissions and 17 of which (77 per cent) were recorded as laboratory confirmed due to norovirus. From week 1 (week beginning 1 January 2018) to week 21 (week beginning 21 May 2018), 230 outbreaks have been reported. Ninety-six per cent (221) of reported outbreaks resulted in ward/bay closures or restrictions to admissions and 72 per cent (166) were laboratory confirmed as due to norovirus.

Suspected and laboratory-confirmed reported norovirus outbreaks in hospitals in England, with regional breakdown: outbreaks occurring in weeks 1-21 2018

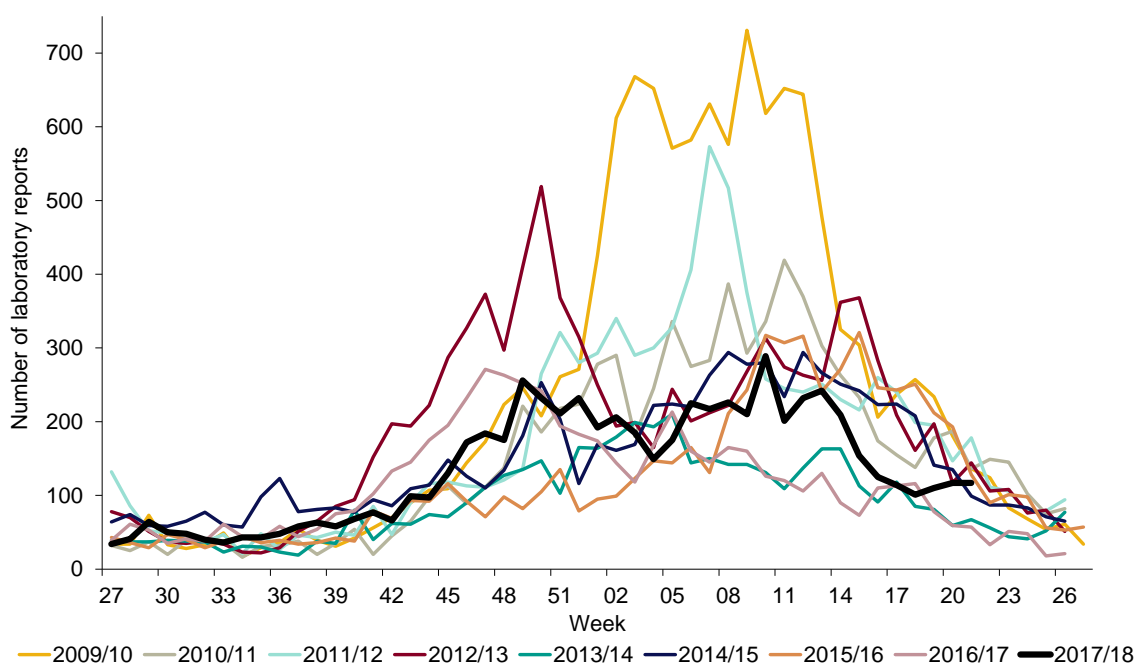
| PHE Centre | Outbreaks between weeks 18-21/2018 | | | Outbreaks between weeks 01-21/2018 | | |
|--------------------------|------------------------------------|--------------------|---------------|------------------------------------|--------------------|---------------|
| | Outbreaks | Ward/bay closure † | Lab confirmed | Outbreaks | Ward/bay closure † | Lab confirmed |
| East of England | – | – | – | – | – | – |
| East Midlands | – | – | – | – | – | – |
| London | – | – | – | 3 | 3 | 3 |
| North East | 4 | 4 | 2 | 56 | 52 | 41 |
| North West | 2 | 2 | – | 10 | 10 | 6 |
| South East | 4 | 4 | 3 | 11 | 11 | 9 |
| South West | 3 | 3 | 3 | 78 | 76 | 68 |
| West Midlands | 9 | 8 | 9 | 49 | 46 | 26 |
| Yorkshire and Humberside | – | – | – | 23 | 23 | 13 |
| Total | 22 | 21 | 17 | 230 | 221 | 166 |

† Note: not all outbreaks result in whole wards closures, some closures are restricted to bays only

Norovirus laboratory reporting: data from SGSS (England and Wales)

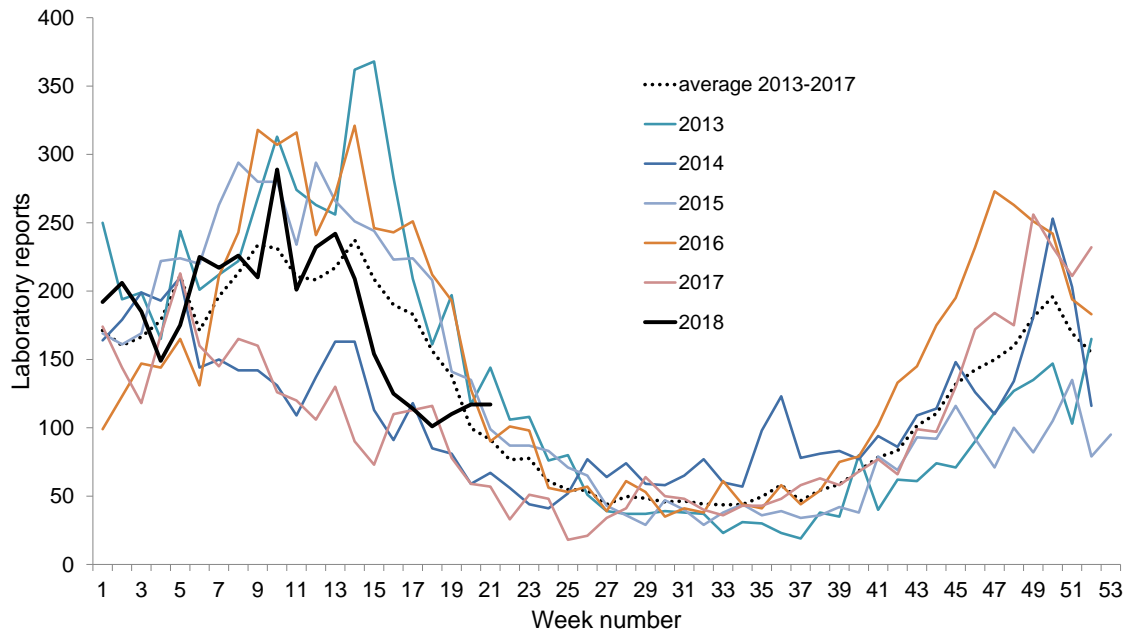
From week 1 2018 to week 21, 2018, there were 3796 laboratory reports of norovirus. This is two per cent lower than the average number of laboratory reports for the same period in the seasons between 2013 and 2017 (3873).

Figure 1. Seasonal comparison of laboratory reports of norovirus 2009/10 - 2017/18 (England and Wales)



Note: The norovirus season runs from week 27 in year 1 to week 26 in year 2, ie week 27 2016 – week 26 2017 July to June, in order to capture the winter peak in one season.

Figure 2. Current weekly norovirus laboratory reports compared to weekly mean reports 2013 - 2017 (England and Wales)



Note: Data from laboratory reporting are subject to a reporting delay and the number reported in the most recent weeks is likely to rise as further laboratory reports are received.

About Public Health England

Public Health England exists to protect and improve the nation's health and wellbeing, and reduce health inequalities. We do this through world-class science, knowledge and intelligence, advocacy, partnerships and the delivery of specialist public health services. We are an executive agency of the Department of Health, and are a distinct delivery organisation with operational autonomy to advise and support government, local authorities and the NHS in a professionally independent manner.

About Health Protection Report

Health Protection Report is a national public health bulletin for England and Wales, published by Public Health England. It is PHE's principal channel for the dissemination of laboratory data relating to pathogens and infections/communicable diseases of public health significance and of reports on outbreaks, incidents and ongoing investigations.

Public Health England, Wellington House, 133-155 Waterloo Road, London SE1 8UG
Tel: 020 7654 8000 www.gov.uk/phe

Twitter: [@PHE_uk](https://twitter.com/PHE_uk) Facebook: www.facebook.com/PublicHealthEngland

Queries relating to this document should be directed to:

noroOBK@phe.gov.uk

© Crown copyright 2018

You may re-use this information (excluding logos) free of charge in any format or medium, under the terms of the Open Government Licence v3.0. To view this licence, visit [OGL](https://www.ogil.io) or email psi@nationalarchives.gsi.gov.uk. Where we have identified any third party copyright information you will need to obtain permission from the copyright holders concerned.

Published: June 2018

PHE publications gateway number: 2018101

