

## **Preliminary flood risk assessment: Thurrock Borough Council**

**This addendum by Thurrock Borough Council (2017) updates the council's preliminary flood risk assessment report published in 2011. Read the addendum in conjunction with the [preliminary assessment report](#).**

### **Addendum**

The preliminary flood risk assessment (PFRA) and flood risk areas (FRAs) for Thurrock Borough Council were reviewed during 2017, using all relevant current flood risk data and information.

Changes to the assessment of risk since the preliminary assessment report was published in 2011 are described in the statements in this addendum.

### **Past flood risk**

A Flood Investigation was produced for Quebec Road in Tilbury in 2013 following flooding in January 2012, April 2012, June 2012 and September 2012 and this area was subsequently identified as an Area of Critical Drainage (AoCD) in the Surface Water Management Plan (SWMP) produced for the area.

### **Future flood risk**

As part of the PFRA update an assessment has been undertaken of properties at risk for the whole Borough based on the technical report for the Updated Flood Map for Surface Water (uFMfSW) property points dataset (Environment Agency, 2014), which identifies a methodology of depth of >200mm for >50% of the wetted perimeter. This identifies 649 properties at risk during a 3.3% annual probability event, 1887 properties at risk during a 1% event and 6116 during a 0.1% event.

### **Flood risk areas (FRAs)**

The following FRAs have been identified wholly or partly within the Thurrock lead local flood authority area for the purposes of the Flood Risk Regulations second planning cycle:

- South Essex (the part within Thurrock LLFA area)
- Thurrock

#### *Background to identification of the FRAs*

The FRAs broadly align with the AoCDs from the SWMP. Following review, boundaries of the indicative (draft) FRAs have been amended to reflect the AoCD boundaries and key infrastructure such as the railway line to the south and a major road to the north. This results in the two FRAs shown in Fig 2 overleaf.

### **Other changes**

[Local flood risk management strategy \(LFRMS\)](#)

**Thurrock Borough Council  
December 2017**

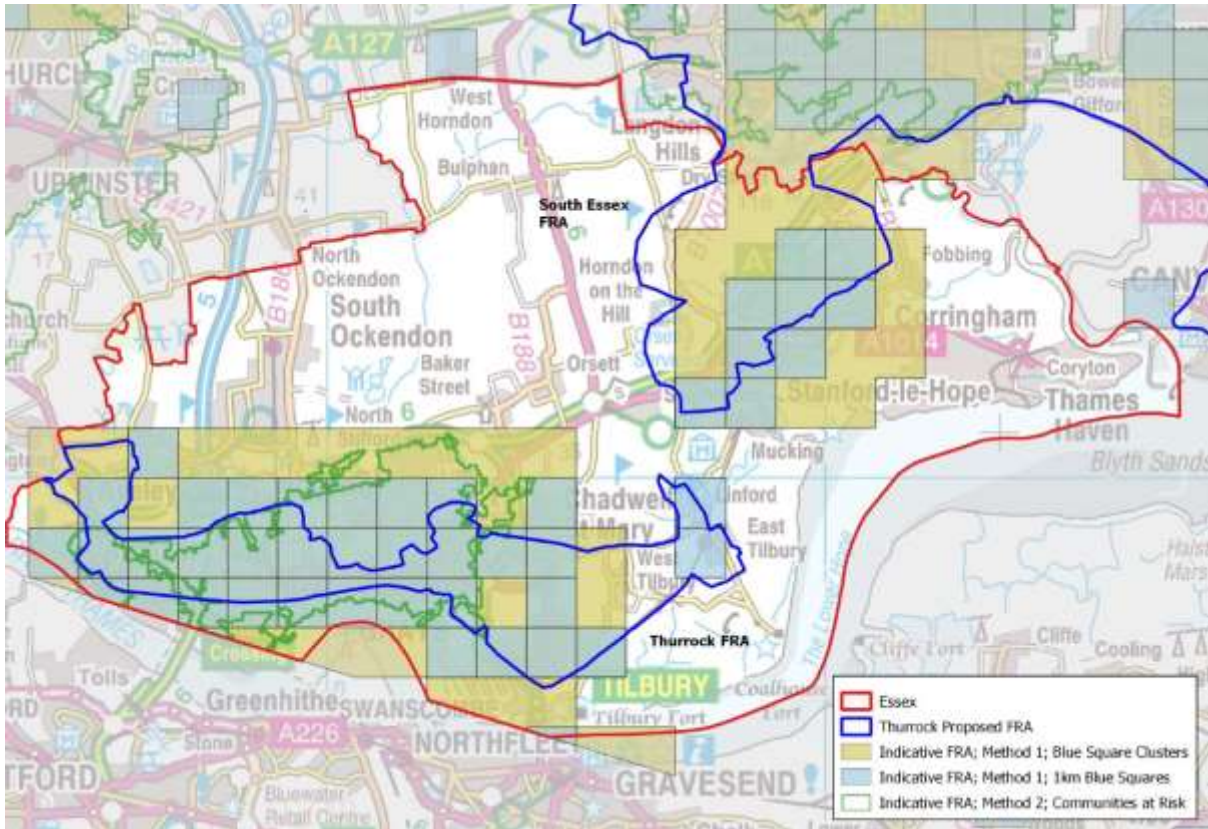


Fig 1 Above- indicative FRAs (prior to review)

Fig 2 Below- Identified FRAs (following review)

