

Preliminary flood risk assessment: Bristol City Council

This addendum by Bristol City Council (2017) updates the council's preliminary flood risk assessment report published in 2011. Read the addendum in conjunction with the [preliminary assessment report](#).

Addendum

The preliminary flood risk assessment (PFRA) and flood risk areas (FRAs) for Bristol City Council were reviewed during 2017, using all relevant current flood risk data and information.

Changes to the assessment of risk since the preliminary assessment report was published in 2011 are described in the statements in this addendum.

Past flood risk

The risk from surface water flooding is high as was assessed in the initial PFRA report. It is noticeable in historic flooding incidents in Bristol, such as what was experienced in 1968.

Future flood risk

The Central Area Flood Risk Assessment (CAFRA) has been completed since the first iteration of the PFRA. This study includes a hydraulic model to assess the risk posed to central Bristol from a combination of tidal and fluvial flood events now and in the future.

A summary report of these findings can be found at:

https://www.bristol.gov.uk/documents/20182/33916/CAFRA_Summary_final.pdf/d0243d87-3f61-448b-bcda-33403bd1e41b. The CAFRA modelling is being actively used and developed through our River Avon Tidal Flood Risk Management Strategy scheme, being completed in partnership with the Environment Agency.

Flood risk areas (FRAs)

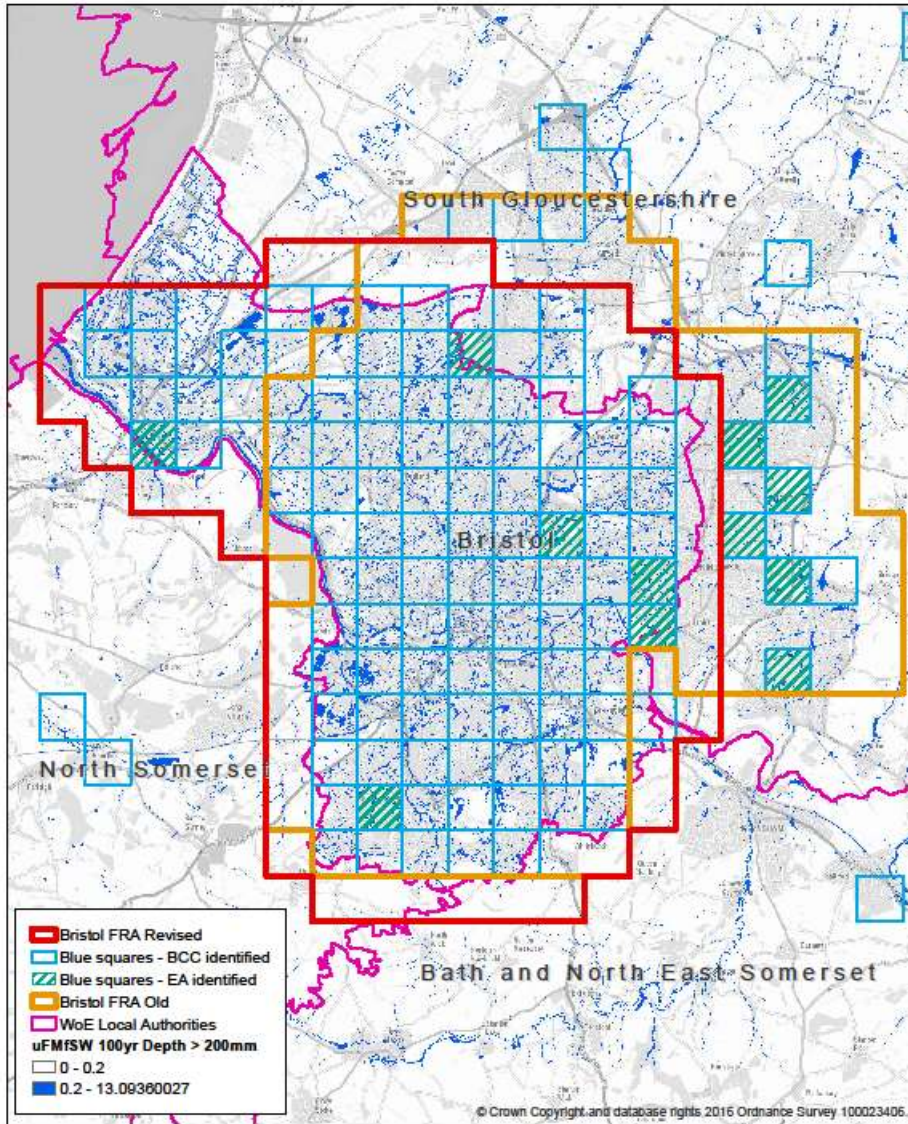
The following revised FRA has been identified for the purposes of the Flood Risk Regulations (2009) second planning cycle


- Bristol City (see map overleaf)

Other changes

No other changes.

**Bristol City Council
December 2017**



<p>PFRA Bristol Flood Risk Area Review 2017</p>	<p>The provision of information by Bristol City Council does not imply a right to reproduce or occasionally exploit such information without the Council's express prior written permission. Reproduction or commercial exploitation of information provided by the Council without its express permission may be an infringement of copyright.</p> <p>The Council is unable to grant permission to reproduce or re-use any material that is the property of third parties. Permission to reproduce or re-use such material must be obtained from the copyright holder.</p> <p>© Bore Plotometry 2012</p>	<p>© Crown Copyright and database right 2017. Ordnance Survey 100023406.</p> <p>STRATEGIC CITY TRANSPORT</p> <p>Scale : @A4 1:100,000 Date: 16/05/2017</p>	 <p>PLACE DIRECTORATE</p>
--	---	---	---