

NATIONAL WASTE PROGRAMME—PEER REVIEW GOOD PRACTICE SUMMARY

SEPTEMBER 2014

This document provides a summary of the good practices observed during peer reviews conducted during the first half of financial year 2014/15. This summary is broken down by element based on the structure in the Peer Review Model and provides a high level overview. More detailed information about any of the good practices, and opportunities to liaise with the sites / projects involved, can be obtained from the National Programme via email to NWP@llwrsite.com.

CHARACTERISATION

- An operational team has been established to undertake on-site sampling operations.
- Feedback from analytical laboratories is actively sought regarding the representativeness of samples supporting good quality characterisation.

INVENTORY MANAGEMENT

- The site has a robust process and system for change control relating to inventory data management. This enables robust control of the inventory data set for the site.

LFE & ENGAGEMENT

- LFE on waste management issues shared in a range of forums with personnel from different teams / departments and levels of the business at the site (and beyond where appropriate).

PACKAGING AND TRANSPORT

- The site waste package fleet is centrally managed by the Waste Team and the Dangerous Goods Safety Advisor. The Waste Team operate a process to issue containers to projects / plants that are retrieving waste. This enables the site to control the use of packaging and waste storage; and to minimise the potential for the accumulation of waste at project or plant work faces.
- The site operates a specific process requiring the visual inspection of packages prior to use and of packaged loads prior to the transfer from site; enabling issues and defects to be identified prior to the transfer of waste off-site. This supports the robust, safe transfer of waste from the site.
- The site has demonstrated significant levels of innovation in the development of novel arrangements for the packaging of wastes, particularly for items with complex geometry. For example, the site has used shrink wrapping and the sand-wiching of items between pallets to enable lashing and loading of complex items.
- The site demonstrated a strong commitment to innovation and improvement in their packaging fleet to support effective LLW management operations. For example, the site has developed liners for stillages and wheelie bins; and has made use of re-usable (washable) liners.

PEOPLE AND PEOPLE ORGANISATION

- Site targets for waste diversion are set from the organisations Joint Waste Management Plan. Progress against these targets is regularly tracked. There is clear communication of the targets to personnel at the site and progress in their achievement is communicated through display in public areas and Waste Team facilities.
- Management at the site has established clear standards and expectations for the conduct of their personnel. These have been communicated effectively (e.g. through the display of “Professionalism in Waste Management” posters in waste management facilities).
- Human Performance tools are reinforced across the site (and to waste management personnel) through visual communication aids and incorporation into routine meetings and briefings.

STORAGE

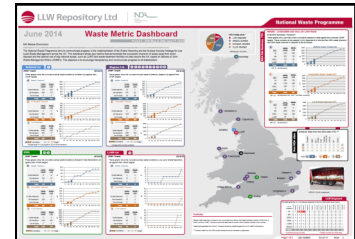
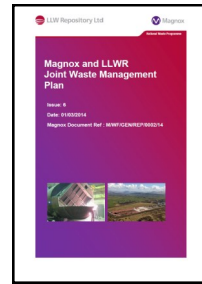
- The site makes excellent use of visual management systems for recording information about storage areas such as the whiteboard in the EMD Facility, which enables simple and open access to the information for support operations.

TRAINING & QUALIFICATION

- The site has developed a Standard Competency Document, which Cogent (the National Skills Council for the Nuclear Industry) are considering adopting throughout the UK.

WASTE MANAGEMENT OPERATIONS

- The site has developed and implemented a series of forms which act as a repository of information about waste items or populations throughout the waste lifecycle. This provides waste management personnel with an auditable trail of information on history / provenance, characterisation, Health Physics monitoring and waste routing.
- The site has developed and utilises an electronic system, which can be accessed by anyone with computer access at the site, to track and communicate the status of waste management projects.
- The site provides a significant amount of information relating to corporate / site plans and targets (such as Joint Waste Management Plan, targets, forecast and Waste Metric Dashboard) to operators in waste management facilities. For example, this information was observed to be kept and maintained in a folder—accessible to all operators—within the LLW Handling facility.
- The Waste Team at the site has centralised budgets for waste management activities at the site enabling the application of effective LLW management routing and the minimisation of the volume of waste requiring disposal.



WASTE ROUTES AND WASTE ROUTE AVAILABILITY

- The site has a strong commitment to and utilisation of waste diversion practices, which has resulted in no disposals of LLW to LLWR in over 2 years. Waste diversion is business-as-usual at the site.
- The site routinely utilises robust waste segregation, size reduction and re-classification practices to drive minimisation of the volume of waste requiring disposal.