

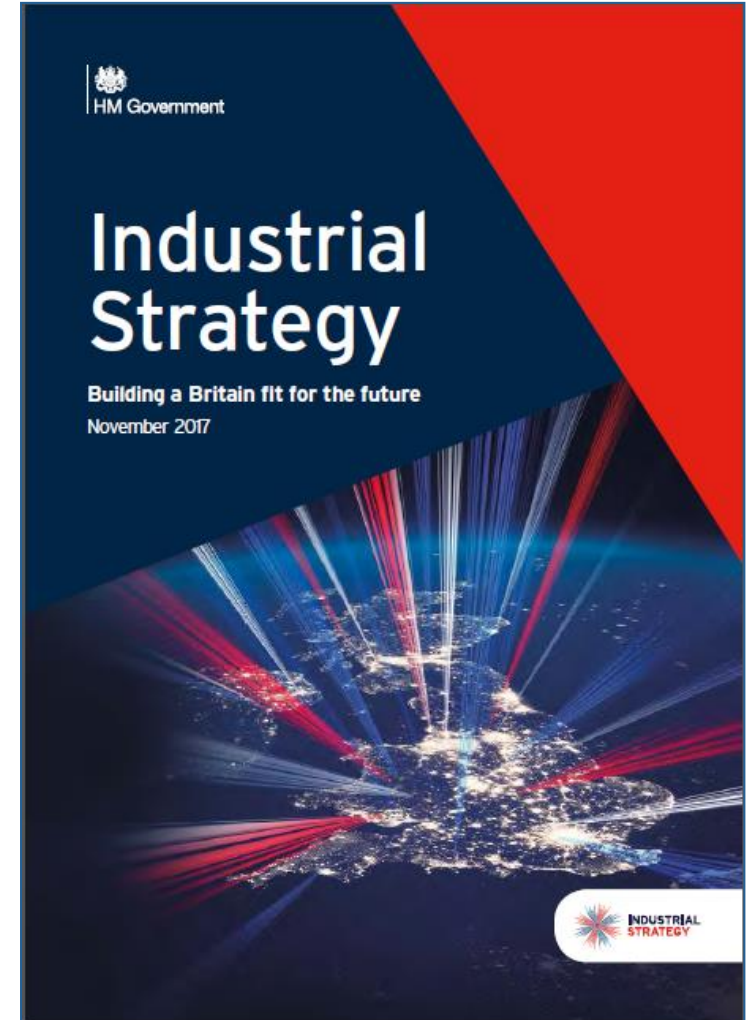
Would like to Meet: Local Business Support

Colin Baldwin

Head of Local Growth Strategy

8 February 2018

Current UK Space Agency Priorities

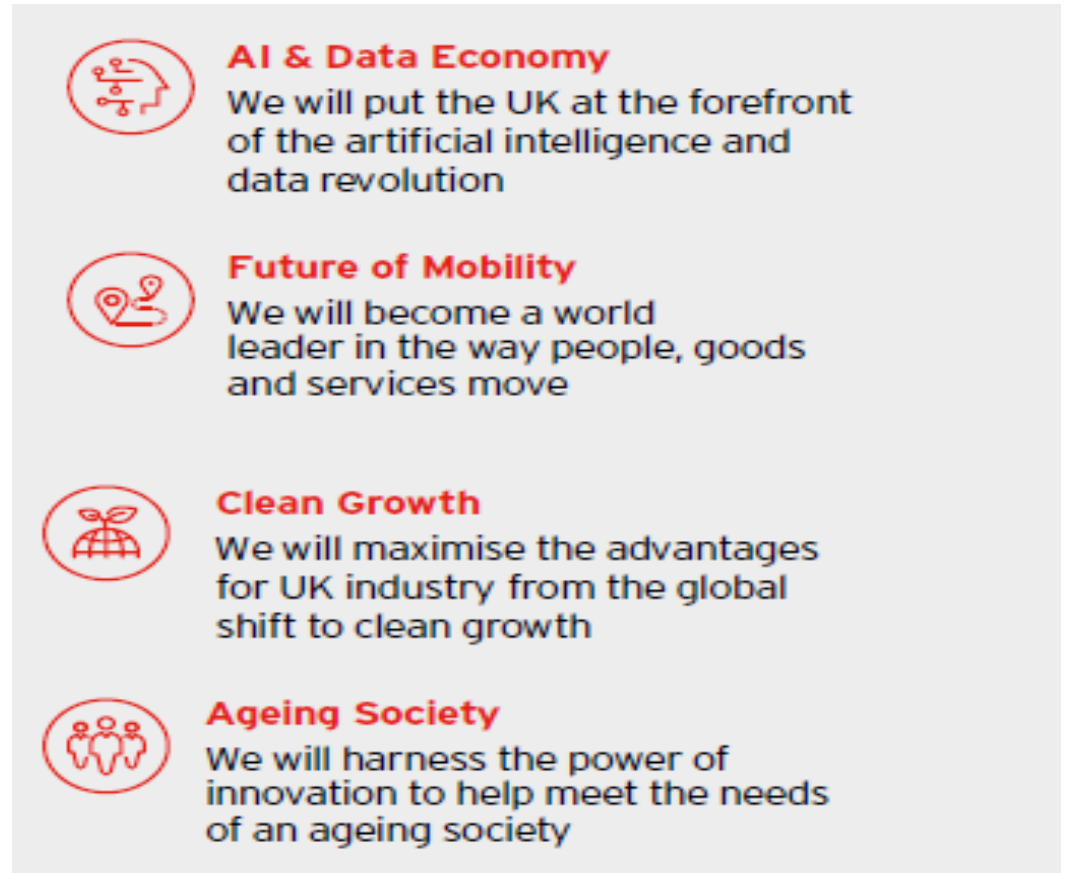


Industrial Strategy: Overview

We will create an economy that boosts productivity and earning power throughout the UK:



We will set Grand Challenges to put the future of the UK at the forefront of the industries of the future:



Space Policy: Local Growth

“The Government will, as part of our wider national infrastructure strategy, develop further clusters around existing and new space assets in industry and academia, replicating the “Harwell effect”.

Government will ensure that the growth benefits of the space industries are felt at local level as well as nationally, linking with Local Enterprise Partnerships and the Devolved Administrations.

It will support “downstream” clusters of companies that can utilise space to deliver innovative products or services into space enabled markets that align with local smart specialisations.”



Local Business Support

- England
 - Local Enterprise Partnerships / Growth Hubs (<http://www.lepnetwork.org.uk/>)
- Scotland
 - Highlands & Islands Enterprise (<http://www.hie.co.uk/>)
 - Scottish Enterprise (<https://www.scottish-enterprise.com/>)
- Wales
 - Welsh Government (<http://gov.wales/splash?orig=/topics/businessandconomy/how-we-support-businesses/>)
- Northern Ireland
 - Invest Northern Ireland (<https://www.investni.com/>)



Innovate UK & family

Innovate UK
Knowledge Transfer Network

enterprise
europe
network

CATAPULT

Innovate UK

In addition to grant funding, Innovate UK has a number of ways of ways to support growth

- The Knowledge Transfer Network (KTN) makes connections to business, academics and other support (<https://www.ktn-uk.co.uk/about>)
- Through the Enterprise Europe Network (EEN) help is available to get specialist support to do business in Europe & beyond. (<https://www.enterprise-europe.co.uk>)
- The Catapult centres are a network of world-leading centres designed to transform the UK's capability for innovation in specific areas and help drive future economic growth. (<https://catapult.org.uk/>)
- Innovate UK has a network of regional managers, working with local stakeholders to make sure local and national plans are aligned (<https://innovateuk.blog.gov.uk/2016/05/19/to-the-regions-and-beyond/>)

Universities

- The UK has world class expertise and facilities within its universities – and many are keen to work with businesses
- Dedicated funding is available to support collaboration – including the Knowledge Transfer Partnership scheme (<http://ktp.innovateuk.org/>)
- Universities will often be delivering business support programmes funded by Government or European Regional Development Funding
- Different universities use different terminology – look at websites for “business”, “working with us”, “innovation” or “partnerships” – or give them a call!
- Or – look at the National Centre for Universities & Business website (<http://www.ncub.co.uk/what-we-do/digital-platforms>)





Scottish
Lead: University of Strathclyde
Focus: Offshore Energy, Maritime,
Health, Future Cities, Remote
Connectivity

- South West England and South Wales
- North Wales and the North West of England
- The Midlands and the North East of England
- London and the South East of England
- Scotland and Northern Ireland

Scottish

North East

North East
Lead: Business Durham
Focus: Maritime,
Transport

East Midlands

East Midlands
Lead: University of Leicester
Focus: Transport, Low
Carbon, Sustainable Living

South West

South West
Lead: University of Exeter
Focus: Maritime, Agri-tech,
Health

South Coast

South Coast
Lead: University of Portsmouth
Focus: Maritime, Transport,
Autonomy

Useful Links

Regional Centres of Excellence in Satellite Applications

<https://sa.catapult.org.uk/services/centres-of-excellence/>

UK Space Incubator Network

<http://www.setsquared.co.uk/start-support/uk-space-incubator-network>

ESA Business Applications Ambassadors

<https://business.esa.int/ambassador-platforms/ap-uk>

Contact me: colin.baldwin@ukspaceagency.bis.gsi.gov.uk