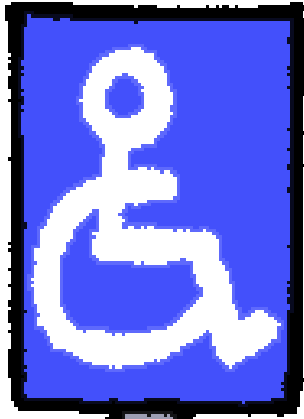




Department
for Transport



Who can have a Blue Badge

What do you think of our ideas?

Answers booklet

MARCH 2018						
M	T	W	T	F	S	S
			1	2	3	4
5	6	7	8	9	10	11
12	13	14	15	16	17	18
19	20	21	22	23	24	25
26	27	28	29	30	31	

Please send us your answers
before 18 March 2018



EasyRead version of:
Department for Transport Blue Badge scheme:
Consultation on Eligibility
January 2018.

About this booklet



Department
for Transport

The Department for Transport wrote this booklet.



It is about the Blue Badge parking scheme for people with disabilities in England.



The scheme is meant to treat people with physical disabilities and people with other disabilities equally.

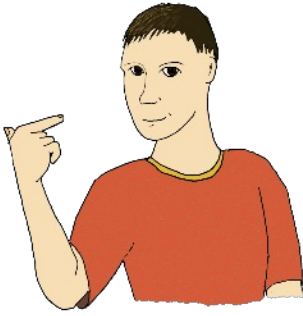


This is your chance to tell us what you think about our ideas in the Information Booklet

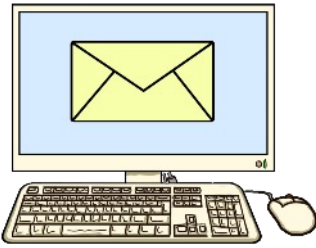
MARCH 2018						
M	T	W	T	F	S	S
			1	2	3	4
5	6	7	8	9	10	11
12	13	14	15	16	17	18
19	20	21	22	23	24	25
26	27	28	29	30	31	

You need to reply before **18 March 2018**.

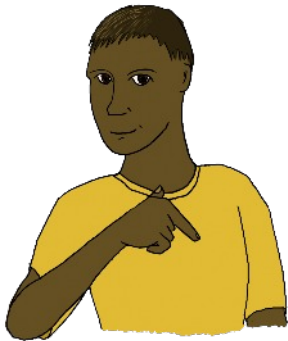
Question 1. About you



Your name:



Your email address:



Are you answering for yourself?

Yes

No

If yes, please answer Question 4



Are you answering for an organisation?

Yes

No

If yes, please answer Questions 2 and 3.

Question 2. About your organisation



The name of your organisation:

What type of organisation is it?

Local council

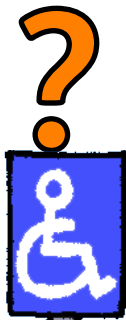
Group for people with disabilities you cannot see

Group for people with physical disabilities

Group for people with all types of disabilities

Any other organisation (please tell us what this is)





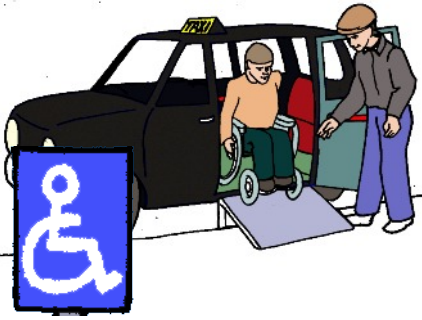
Question 3. How many people will this affect?

How many people in England that your organisation speaks for would get a Blue Badge if the rules change because:



- They cannot make any journey because it is very difficult for them when they walk
- or
- They cannot make any journey because it is not safe for them or for other people
- or
- They do not know where they are going without another person, assistance animal or an aid to help them know where they are.

Question 4. Changing the rules about who can get a Blue Badge



The Blue Badge should make it easier for people to make journeys that would be very difficult without it.

We think people should have a Blue Badge if they have a severe long time disability that means they are unable to:



- Walk
- Make any journey because it is very difficult for them when they walk
- Make any journey because it is not safe for them or for other people
- Know where they are going without another person, assistance animal or an aid to help them know where they are.



Do you agree with our ideas to change the rules?

Yes

No

If you have answered No, please tell us:



What you disagree with



What you think we should do instead and why

Question 5. Eligibility Assessors



If councils are not sure whether someone should have a Blue Badge, they can ask an independent **mobility assessor** to help decide.



At the moment, the rule is that the assessor must not know the person well and cannot be their GP.



We think councils need **assessors** who understand mental health and learning disabilities. They might need to know the person to understand how this stops them getting about independently.



We would like to get rid of the rule that says the **assessor** should not already know the person. We think different healthcare professionals (but not the person's GP) could be **eligibility assessors**.



Do you agree with our ideas about **eligibility assessors?**

Yes

No

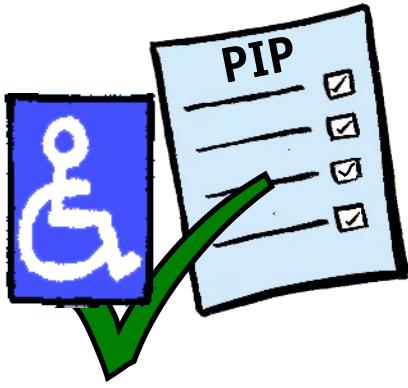
If you have answered No, please tell us:

Why you disagree

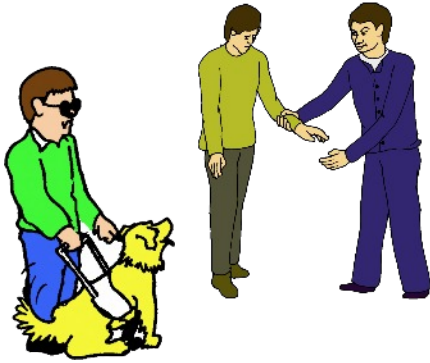


What do you think we should do instead and why?

Question 6. Linking to PIP assessments



At the moment people with physical disabilities automatically get a Blue Badge if their **PIP assessment** shows they need one.



We think it should be the same for people with other disabilities, if their **PIP assessment** says they cannot do a journey they know without another person, guide dog or an aid to help them.



Do you agree that the Blue Badge should link to a score of 12 points in **PIP** for people with any disability?

Yes

No



If you have answered No, please tell us:

Why you disagree

Question 7. Would our ideas be unfair to anyone?



Do you think these changes would be unfair to any particular group of people with disabilities?

Yes

No

If you have answered Yes, please tell us:

Which change would be unfair:



Changing the rules about who can have a Blue Badge



Having **eligibility assessors**



Linking to **PIP**



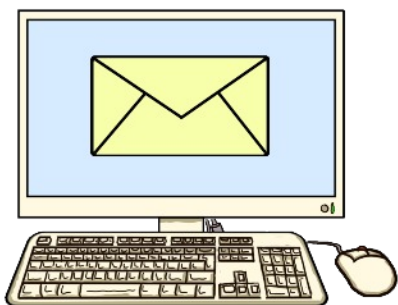
Which group or groups of people do you think this would be unfair to?



Why would it be unfair?



Question 8. Is there anything else you want to say?



Please email your answers to:
bluebadge.consultations@dft.gsi.gov.uk



Or post them to:
Vida Browne-Campbell
Department for Transport
Traffic and Technology Division
3/27 Great Minster House
33 Horseferry Road
London. SW1P 4DR



Credits

This paper has been designed and produced by the EasyRead service at Inspired Services Publishing Ltd. Ref ISL180 17. February 2018.

www.inspiredservices.org.uk



It meets the European EasyRead Standard.



Artwork includes material from the Inspired EasyRead Collection and cannot be used anywhere else without written permission from Inspired Services.

www.inspired.pics

© Copyright in the typographical arrangement rests with the Crown.

You may re-use this information (not including logos or third-party material) free of charge in any format or medium, under the terms of the Open Government Licence v2.0.

To view this licence, visit <http://www.nationalarchives.gov.uk/doc/open-government-licence/ogl-symbol-41px-retina-black> or write to the Information Policy Team, The National Archives, Kew, London TW9 4DU, or e-mail: psi@nationalarchives.gsi.gov.uk.