



PHE Influenza Surveillance graphs

- Influenza activity in the United Kingdom is monitored using a variety of [surveillance systems](#). The [National Influenza Report](#) which interprets the data is published weekly.
- National and subnational outputs from the various surveillance systems are grouped according to the following categories:
 - [Community influenza surveillance](#)
 - [Influenza-like illness GP consultation rates](#)
 - [Influenza-confirmed hospitalisations](#)
 - [All-cause mortality](#)
 - [Microbiological surveillance](#)
 - [Influenza vaccination](#)

Respiratory Diseases Department
Centre for Infectious Disease Surveillance and Control
Public Health England
respcidsc@phe.gov.uk

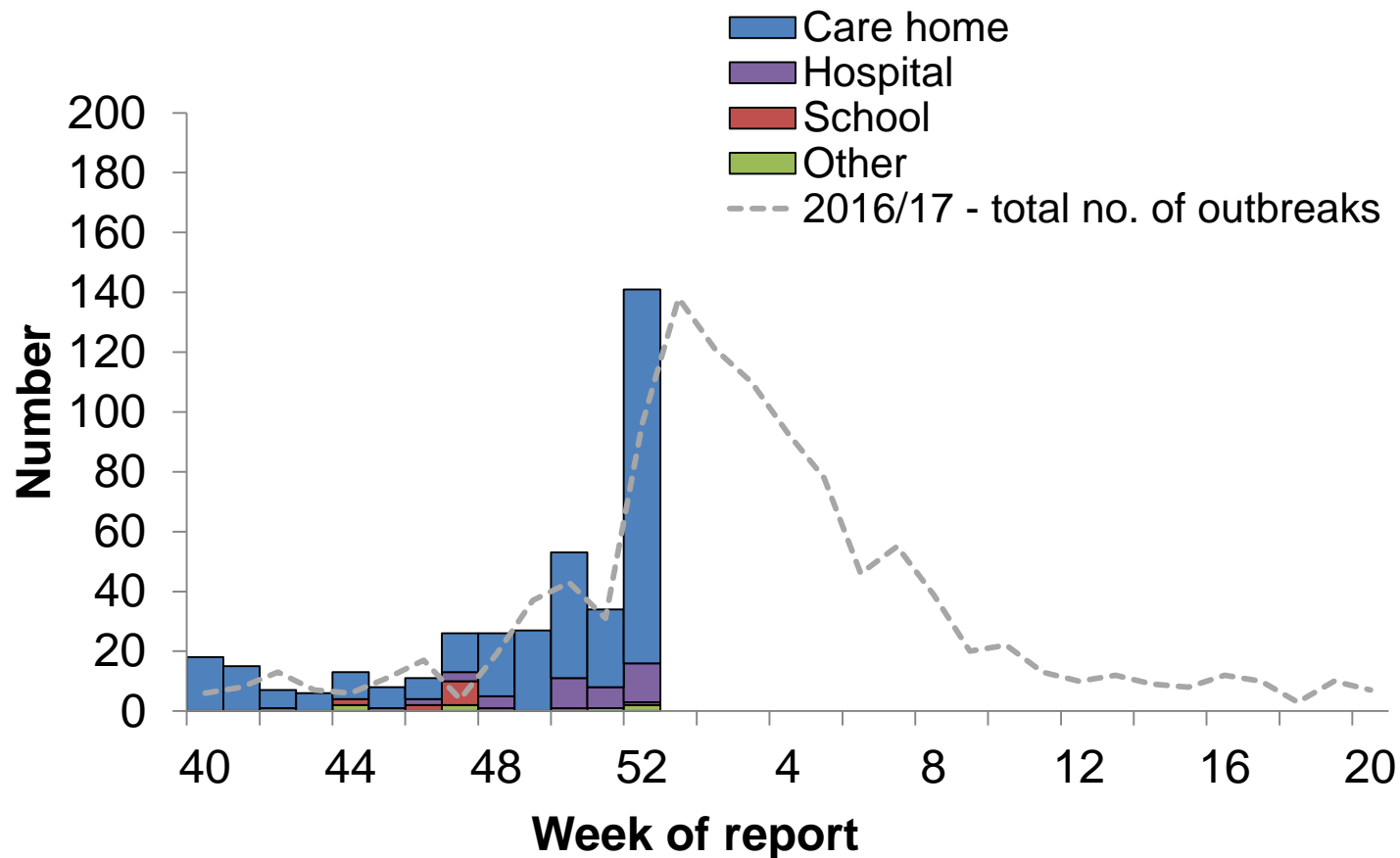


Public Health
England

Community influenza surveillance



Number of acute respiratory outbreaks by institution, UK





Number of acute respiratory outbreaks by PHE Region

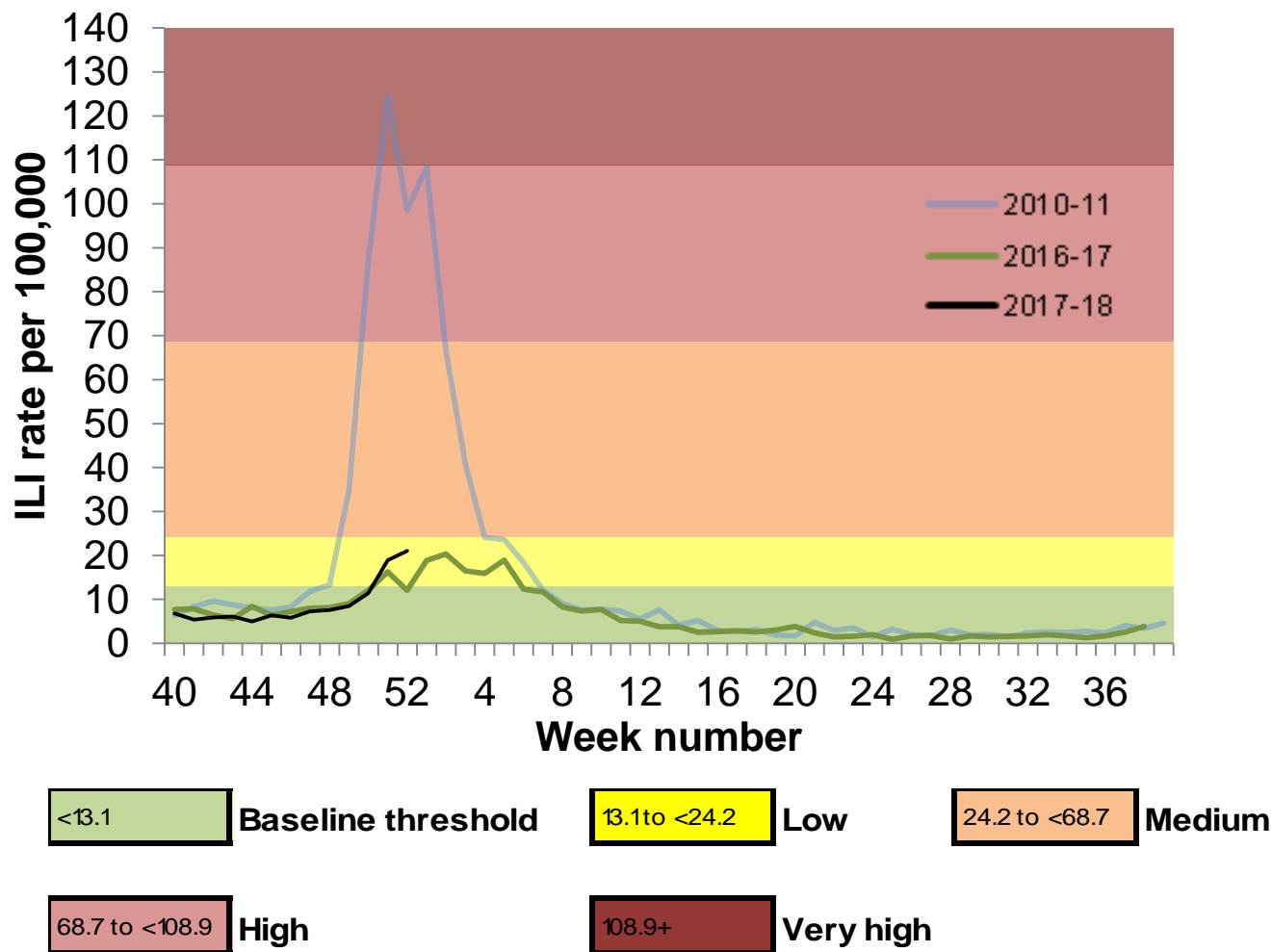
| | Outbreaks reported in week 52 | Cumulative number of outbreaks since week 40 |
|----------------------------------|-------------------------------|----------------------------------------------|
| PHE North of England | 31 | 95 |
| PHE Midlands and East of England | 42 | 116 |
| PHE London | 3 | 13 |
| PHE South of England | 52 | 113 |



Influenza-like illness GP consultation rates



RCGP ILI consultation rate, England





GP ILI consultations in the UK for all ages with MEM thresholds applied

| GP ILI consultation rates (all ages) | Week number | | | | | | | | | | | | | | | | |
|--------------------------------------------|-------------|------|-----|------|------|------|------|-----|-----|------|------|------|------|---|---|---|---|
| | 40 | 41 | 42 | 43 | 44 | 45 | 46 | 47 | 48 | 49 | 50 | 51 | 52 | 1 | 2 | 3 | 4 |
| England (RCGP) | 6.8 | 5.4 | 5.9 | 6.1 | 5.0 | 6.4 | 5.9 | 7.3 | 7.6 | 8.5 | 11.4 | 18.9 | 21.0 | | | | |
| Wales | 5.7 | 6.5 | 6.6 | 5.4 | 5.0 | 5.4 | 6.2 | 6.4 | 5.9 | 6.4 | 8.7 | 13.2 | 17.7 | | | | |
| Scotland | 10.0 | 15.3 | 8.3 | 10.8 | 12.4 | 11.7 | 10.3 | 9.1 | 9.4 | 18.4 | 32.5 | 40.0 | 46.3 | | | | |
| Northern Ireland | 3.4 | 3.9 | 3.7 | 3.3 | 4.0 | 3.6 | 4.5 | 5.3 | 4.0 | 8.2 | 10.1 | 20.7 | 22.7 | | | | |

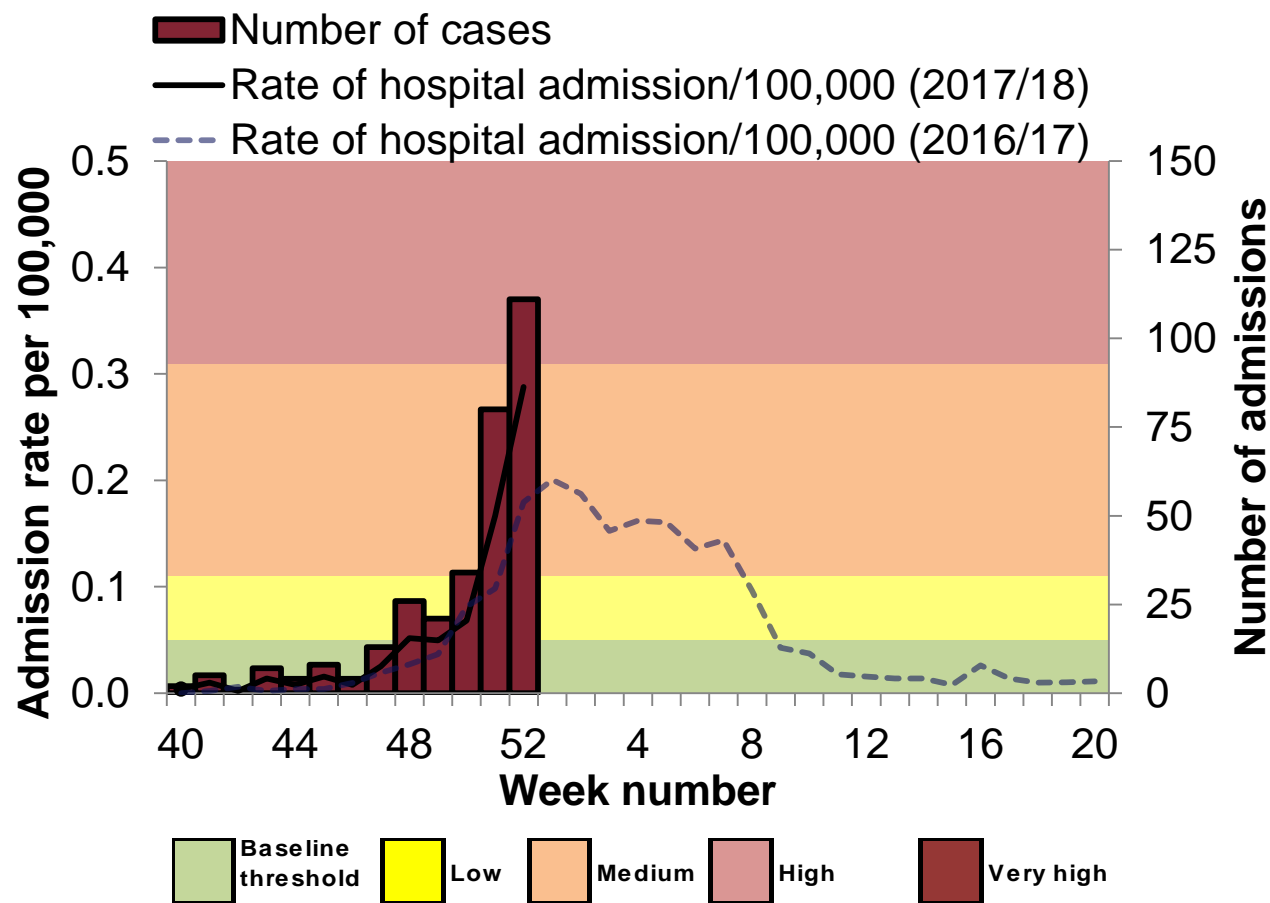
**The Moving Epidemic Method (MEM) has been adopted by the European Centre for Disease Prevention and Control to calculate thresholds for GP ILI consultations for the start of influenza activity (based on 10 seasons excluding 2009/10), in a standardised approach across Europe. For MEM threshold values for each country, please visit: <https://www.gov.uk/guidance/sources-of-uk-flu-data-influenza-surveillance-in-the-uk#clinical-surveillance-through-primary-care> .*



Influenza-confirmed hospitalisations



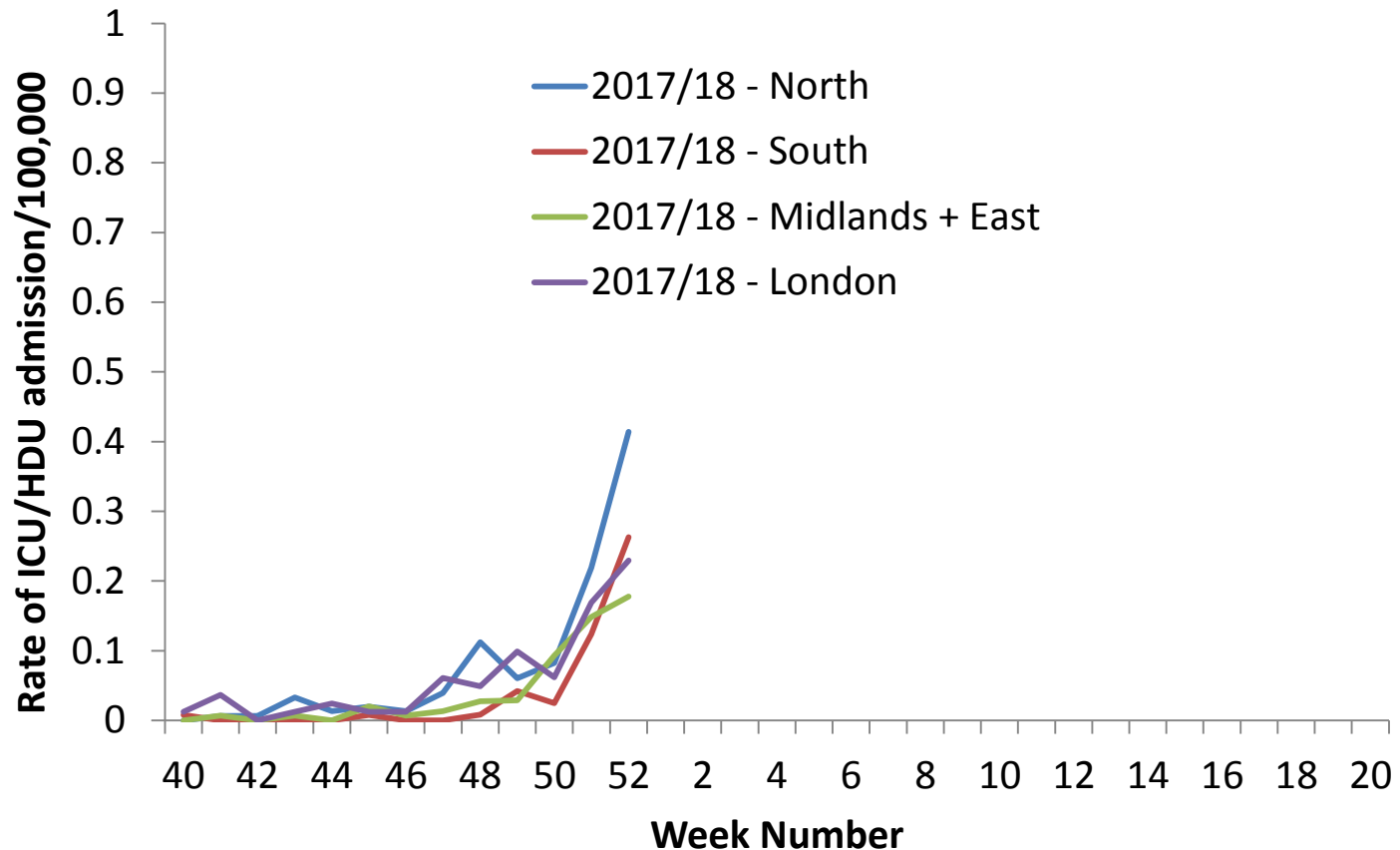
Weekly ICU/HDU influenza admission rate per 100,000 trust catchment population , England, since week 40 2017



*The Moving Epidemic Method (MEM) has been adopted by the European Centre for Disease Prevention and Control to calculate thresholds for ICU/HDU admission rates for the start of influenza activity (based on 6 seasons) in a standardised approach across Europe. For MEM threshold values, please visit: <https://www.gov.uk/guidance/sources-of-uk-flu-data-influenza-surveillance-in-the-uk#disease-severity-and-mortality-data>

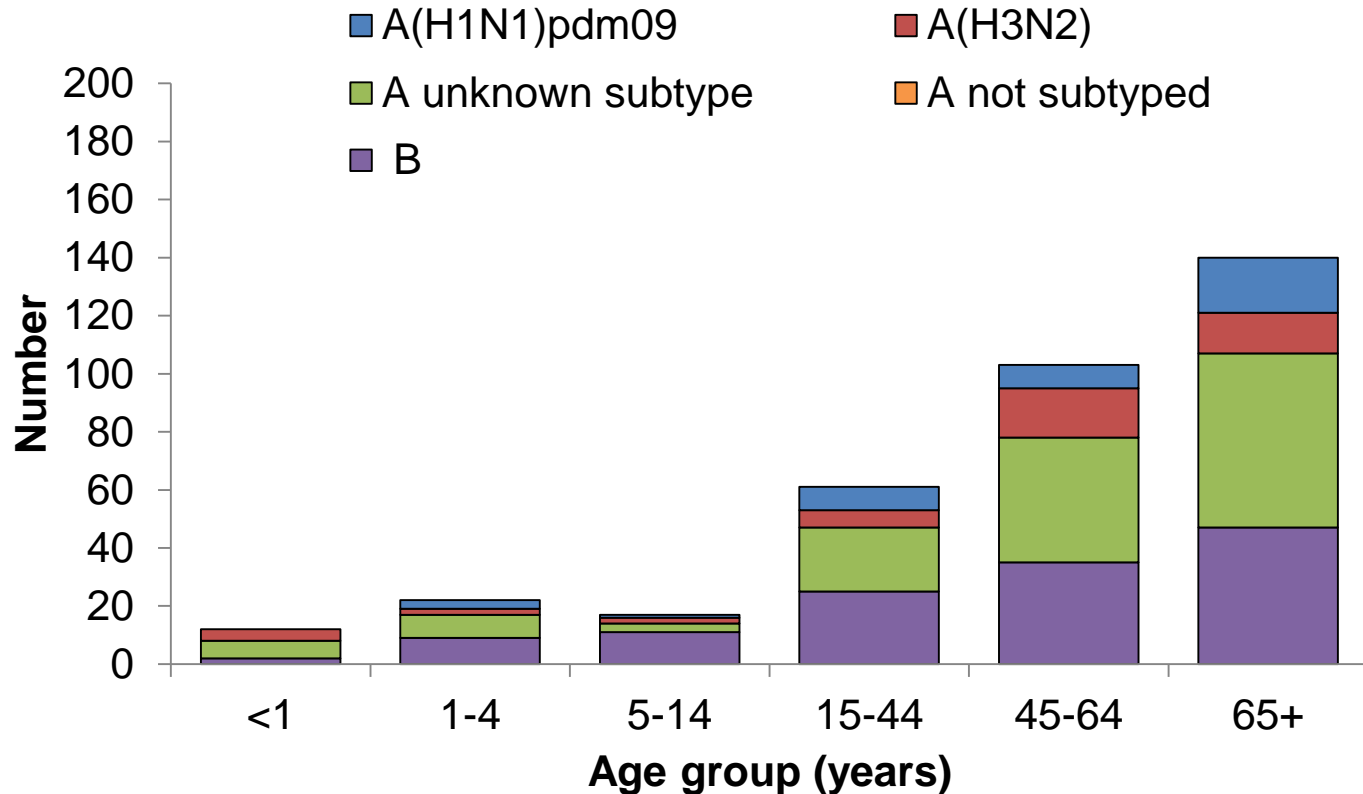


Weekly ICU/HDU influenza admission rate per 100,000 trust catchment population by PHE region, since week 40 2017



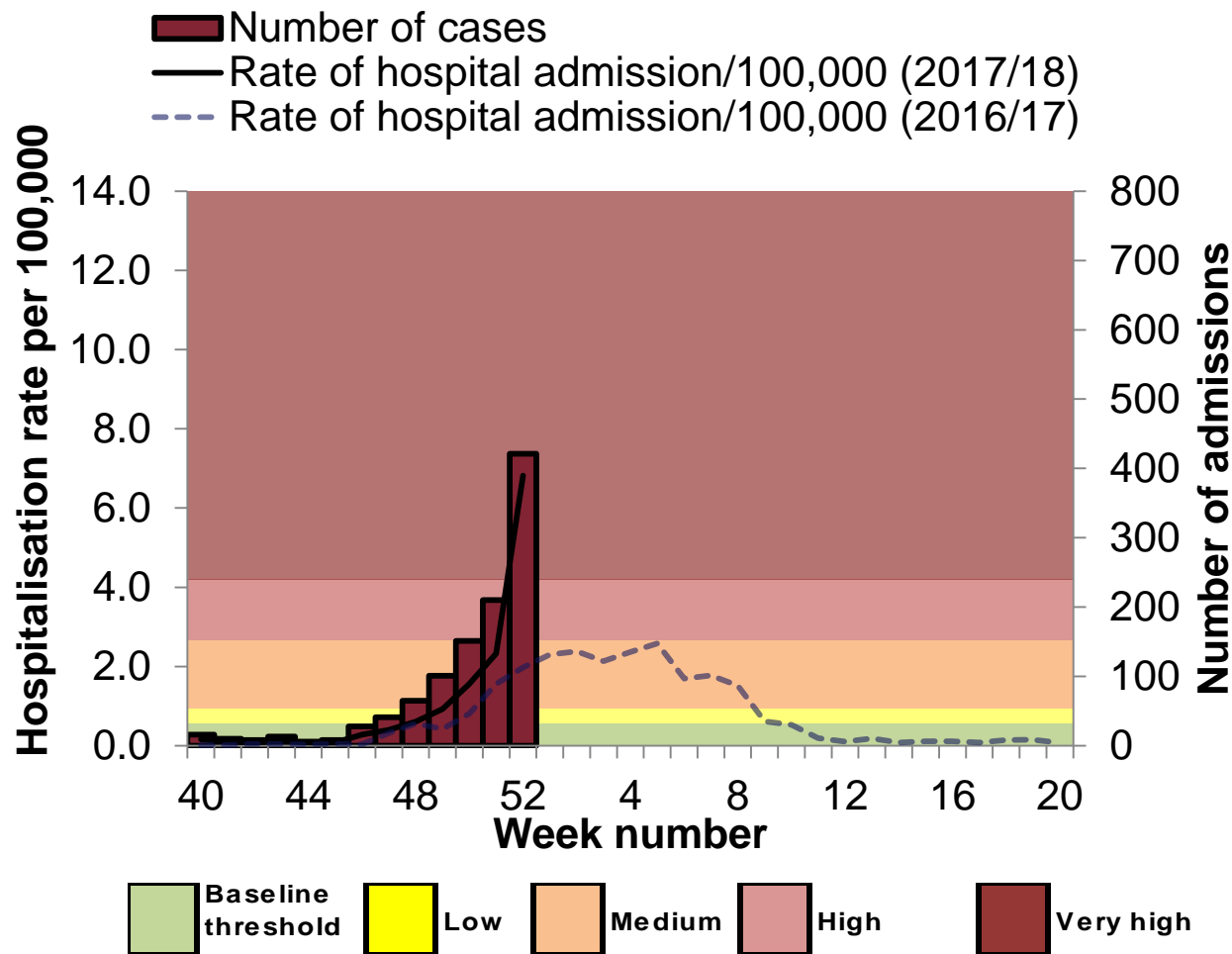


Influenza confirmed ICU admissions (USISS mandatory) by age and influenza subtype, since week 40 2017





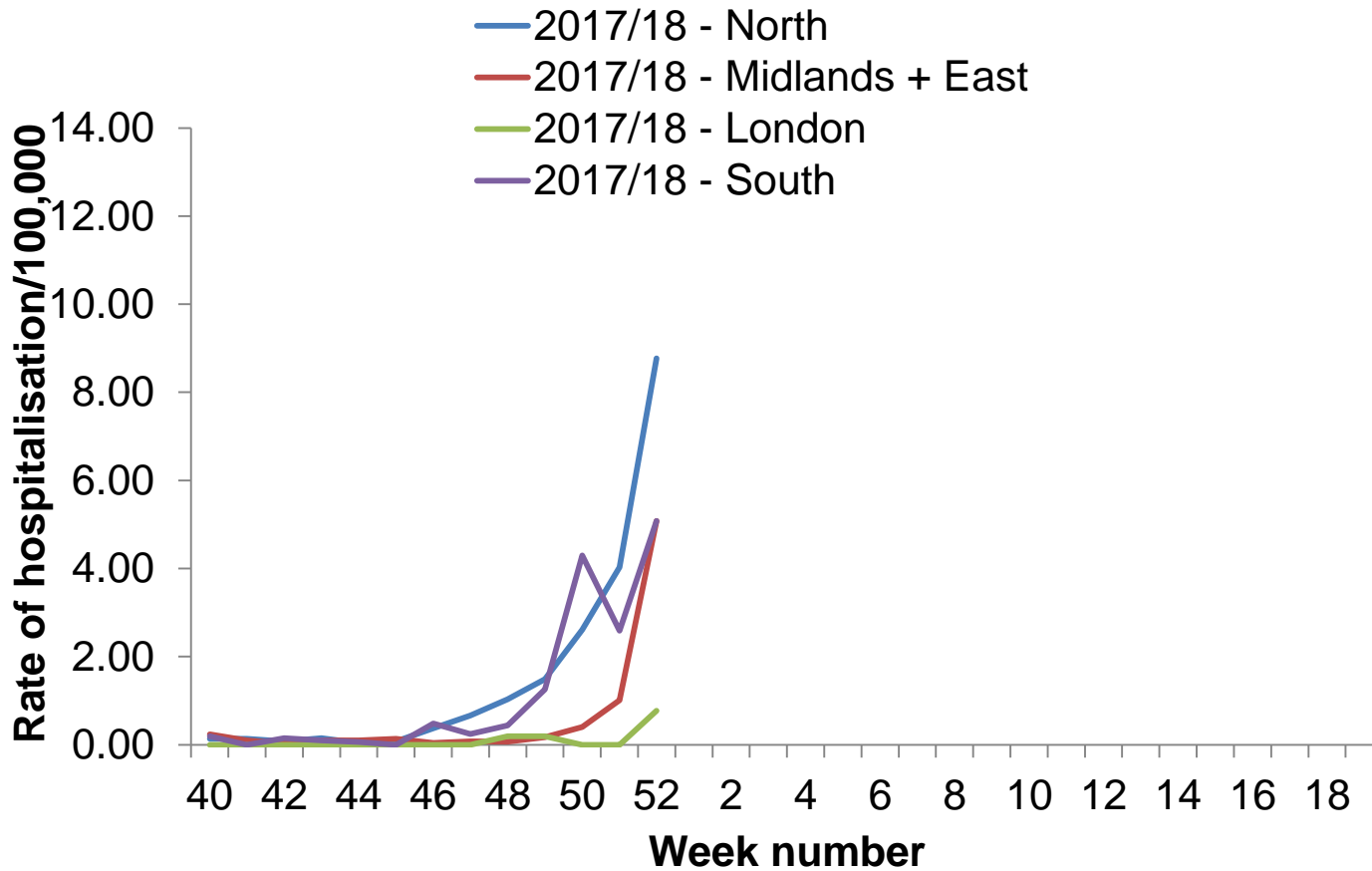
Weekly hospitalised influenza case rate per 100,000 trust catchment population , England, since week 40 2017



*The Moving Epidemic Method (MEM) has been adopted by the European Centre for Disease Prevention and Control to calculate thresholds for ICU/HDU admission rates for the start of influenza activity (based on 6 seasons) in a standardised approach across Europe. For MEM threshold values, please visit: <https://www.gov.uk/guidance/sources-of-uk-flu-data-influenza-surveillance-in-the-uk#disease-severity-and-mortality-data>



Weekly hospitalised influenza admission rate per 100,000 trust catchment population by PHE region, since week 40 2017



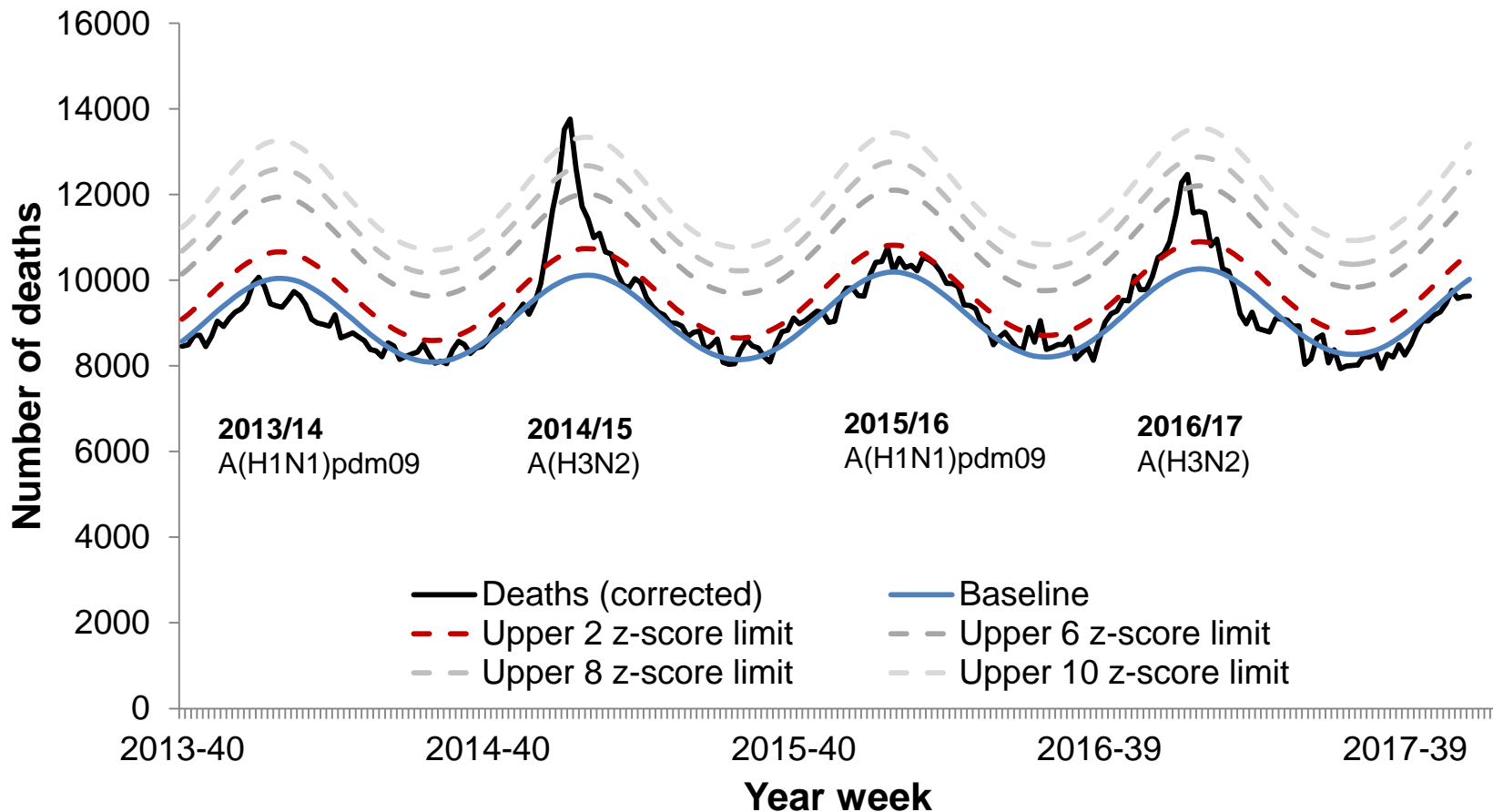


All-cause mortality



Excess mortality (all causes) by week of death through the EuroMOMO algorithm in all ages, England

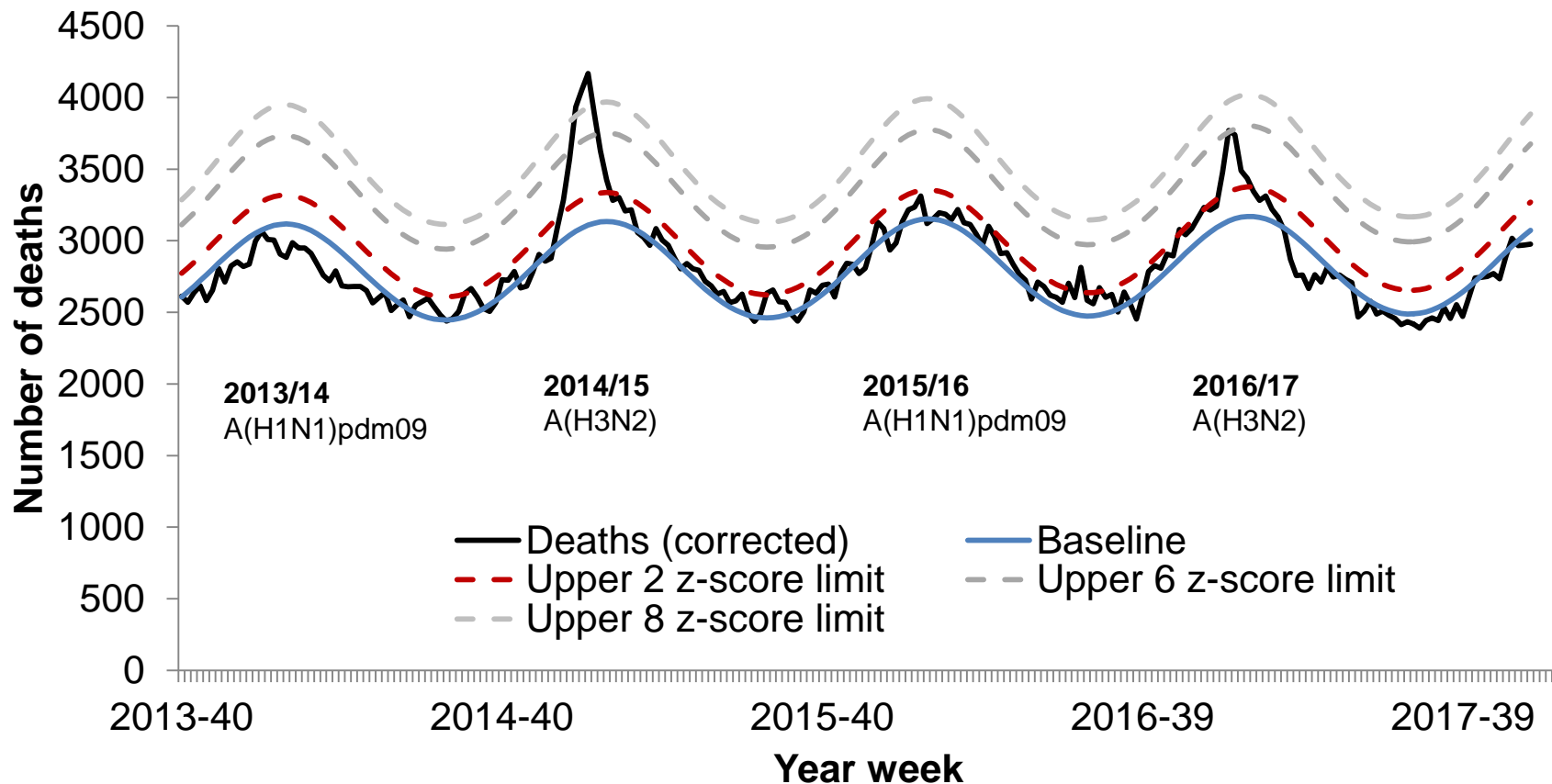
This slide has not been updated with week 51 and 52 data as mortality data is currently not available due to the holiday period





Excess mortality (all causes) by week of death through the EuroMOMO algorithm in all ages, PHE North of England

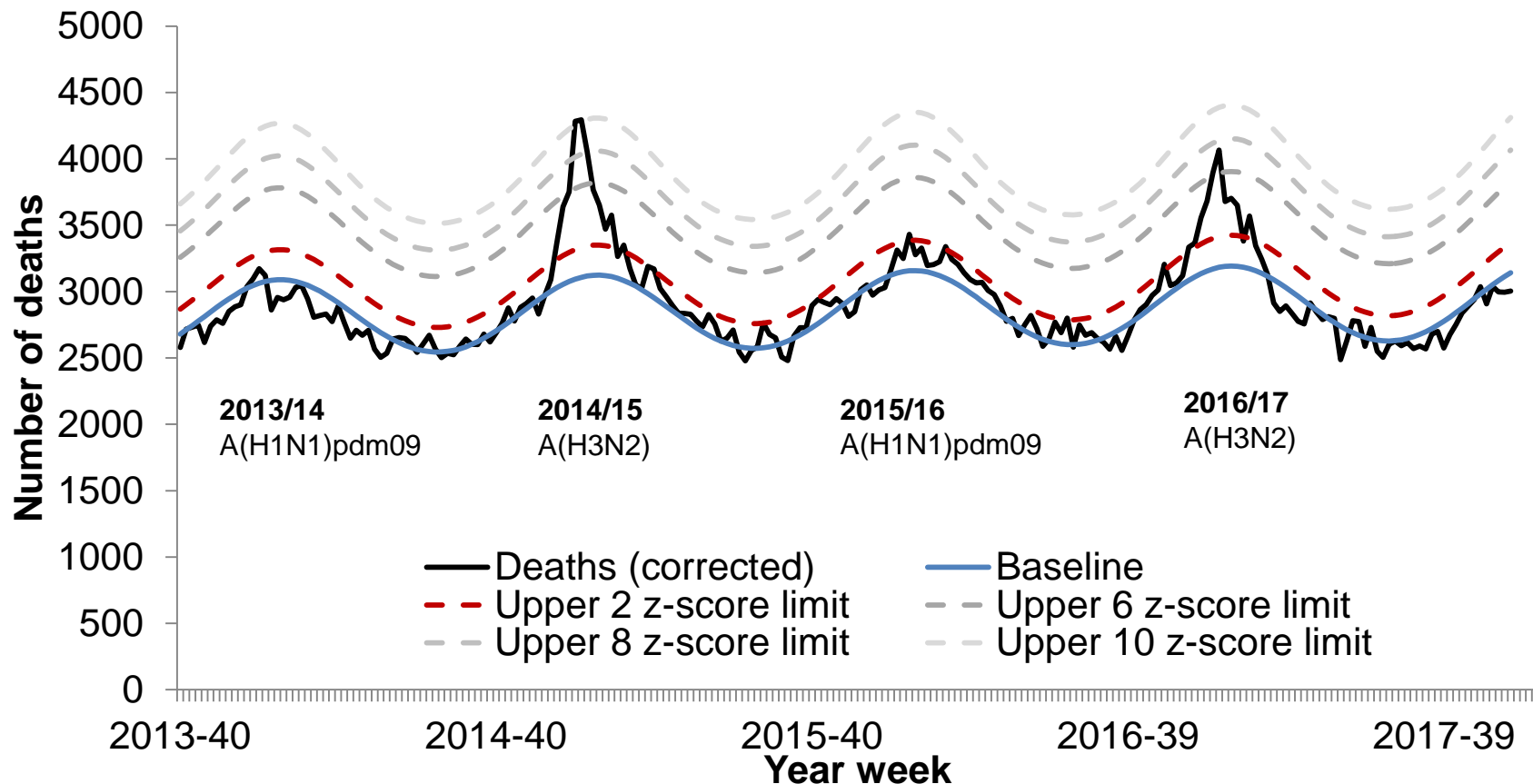
This slide has not been updated with week 51 and 52 data as mortality data is currently not available due to the holiday period





Excess mortality (all causes) by week of death through the EuroMOMO algorithm in all ages, PHE Midlands and East of England

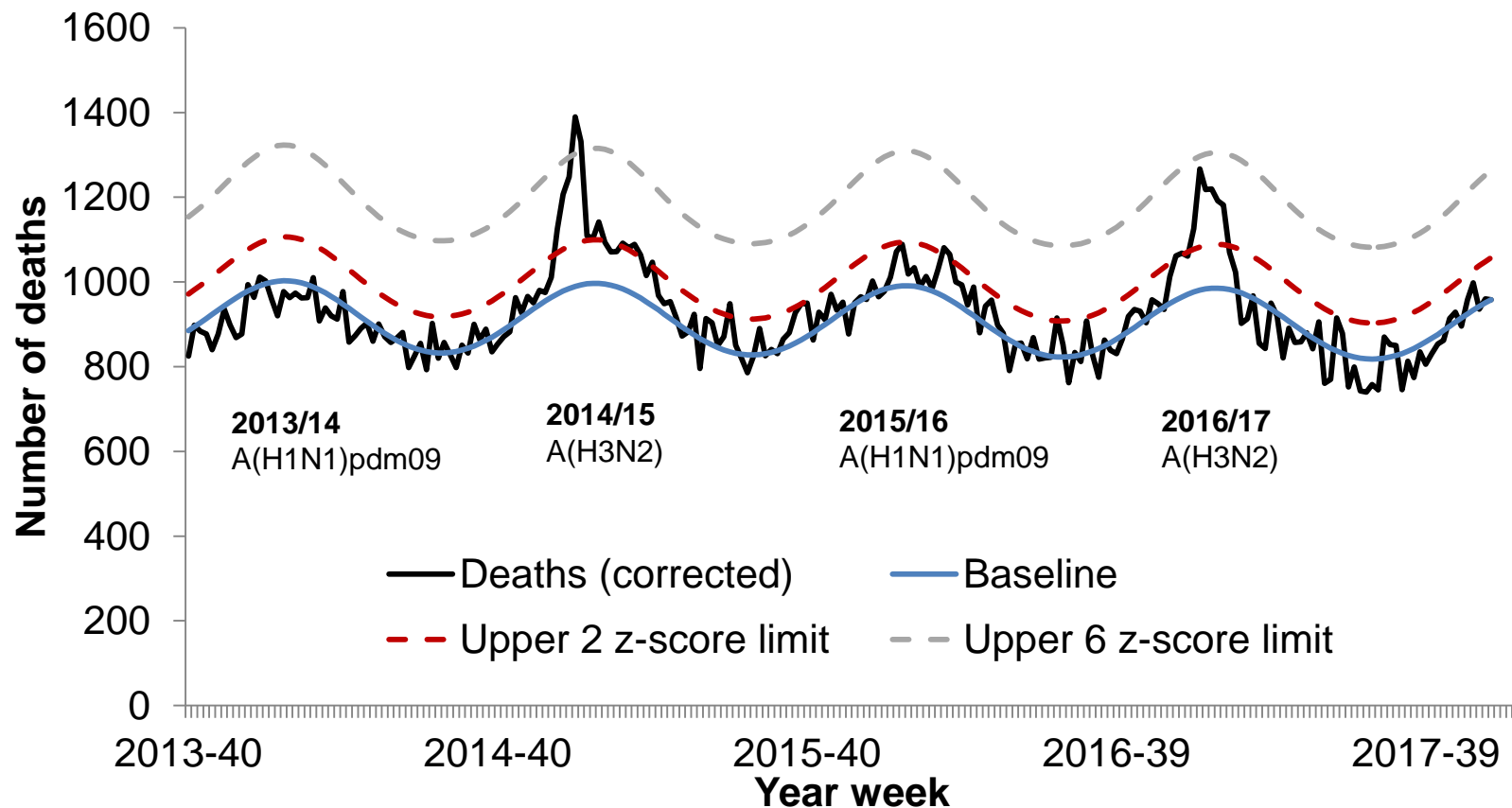
This slide has not been updated with week 51 and 52 data as mortality data is currently not available due to the holiday period





Excess mortality (all causes) by week of death through the EuroMOMO algorithm in all ages, PHE London

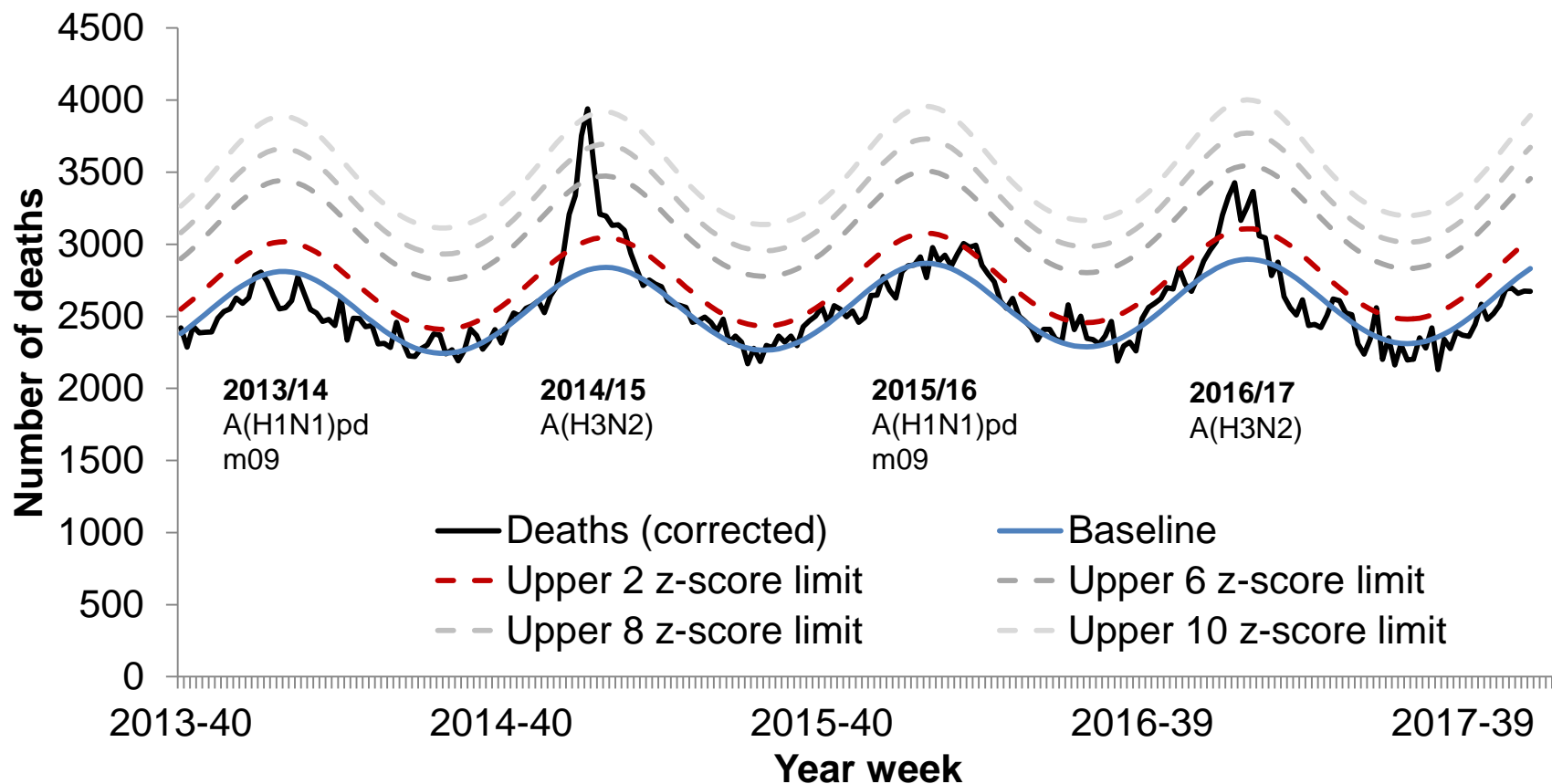
This slide has not been updated with week 51 and 52 data as mortality data is currently not available due to the holiday period





Excess mortality (all causes) by week of death through the EuroMOMO algorithm in all ages, PHE South of England

This slide has not been updated with week 51 and 52 data as mortality data is currently not available due to the holiday period



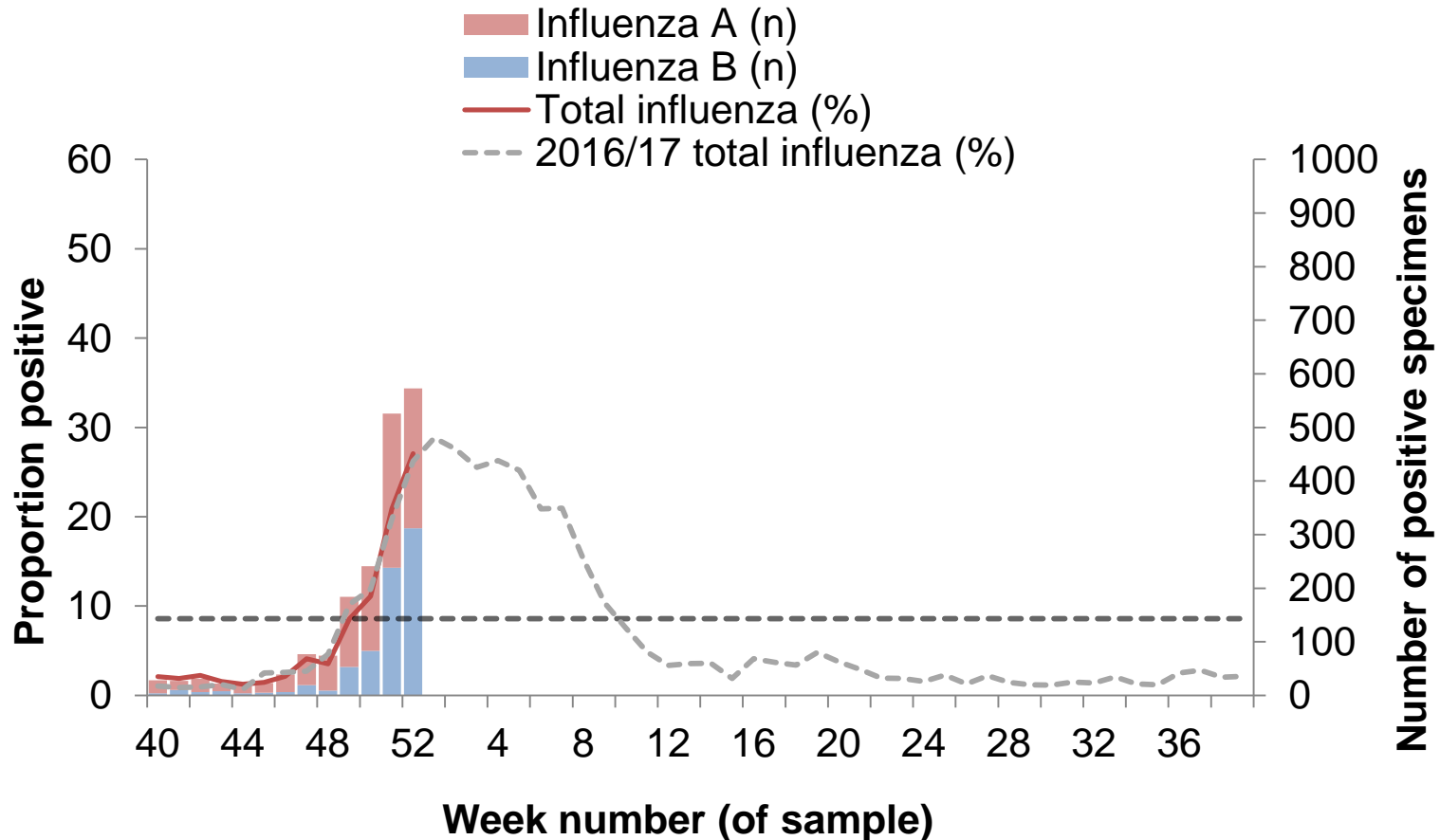


Public Health
England

Microbiological surveillance

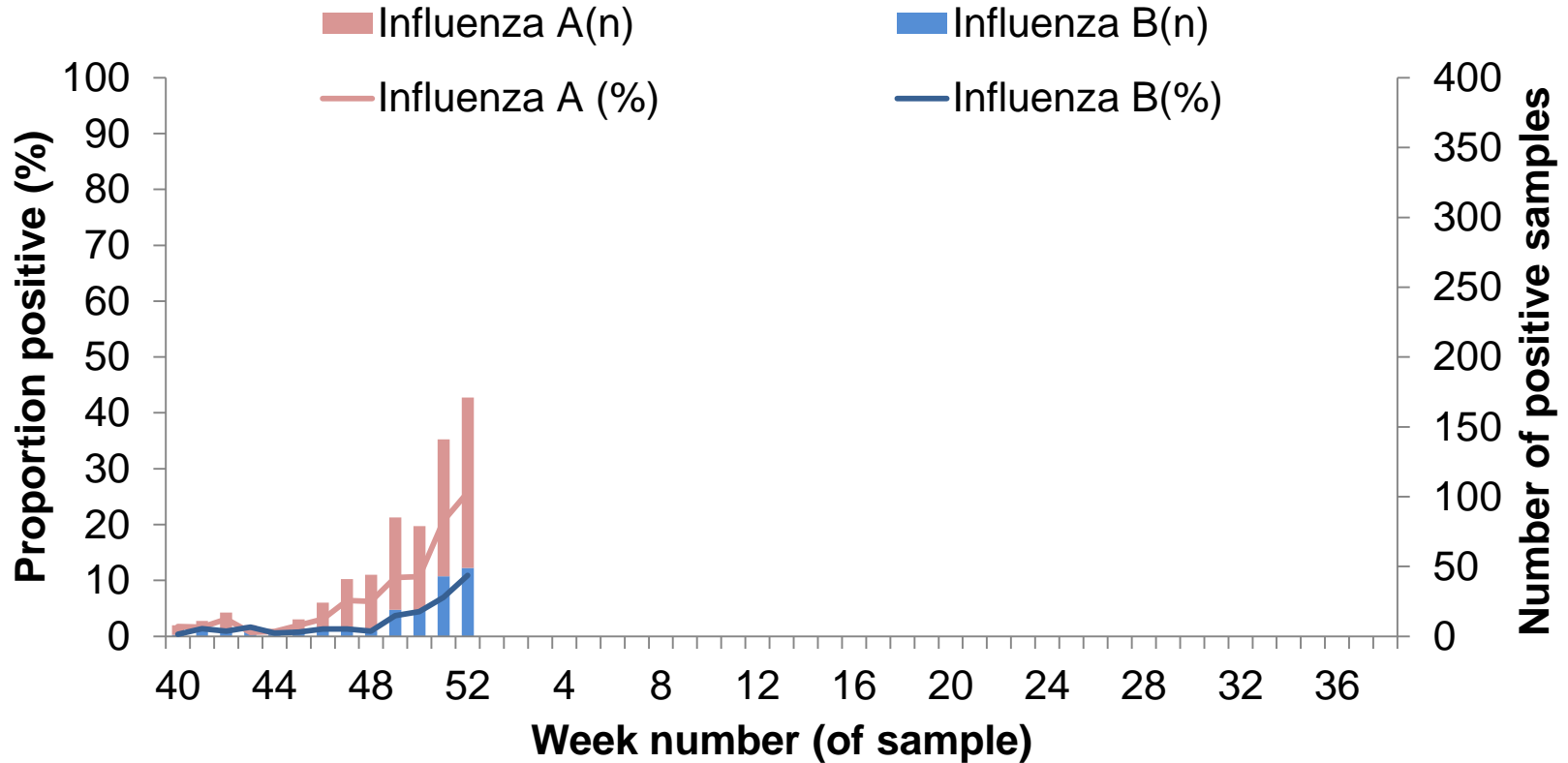


DataMart: Number and proportion of samples positive for influenza, by type, England



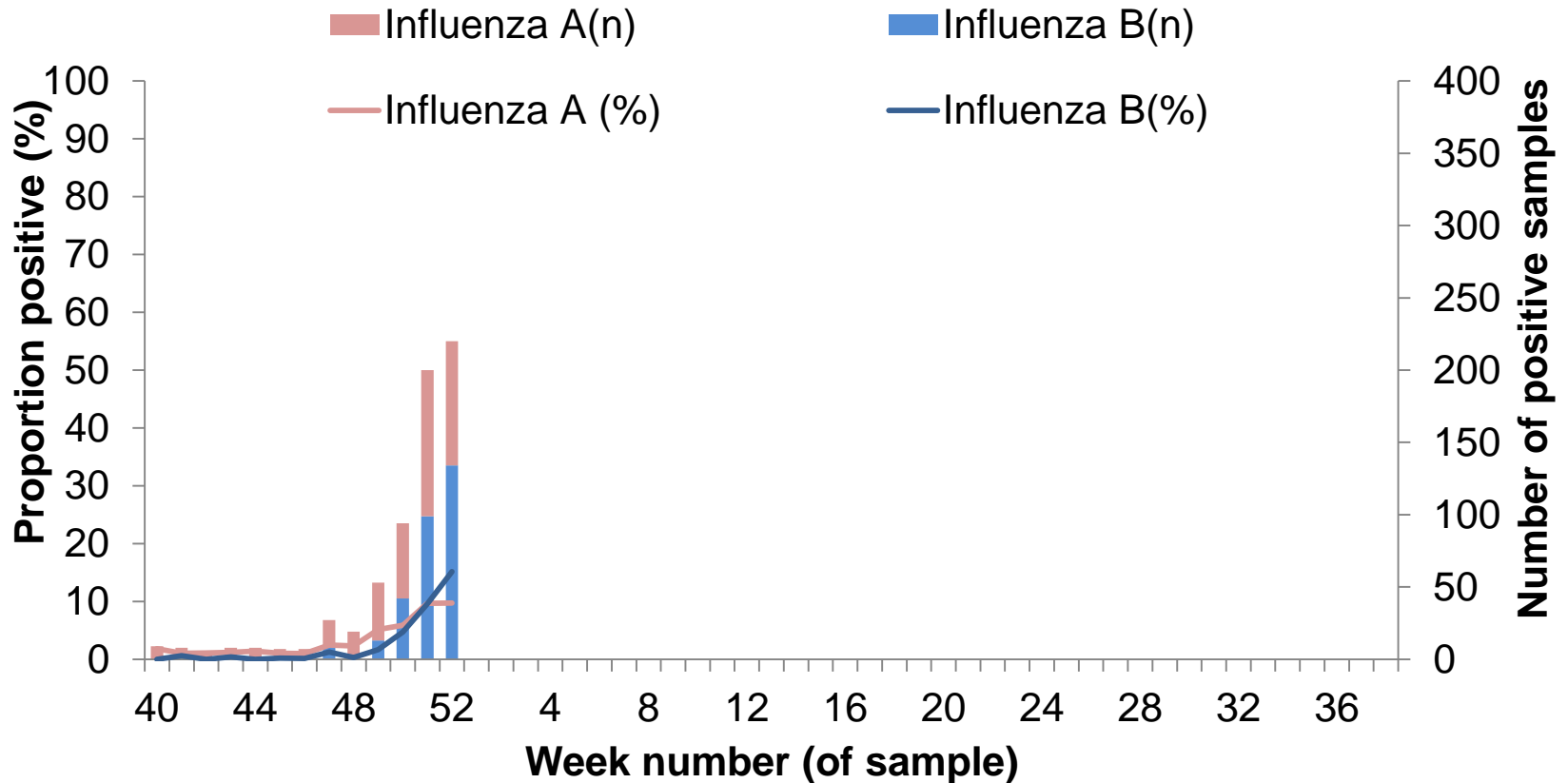


DataMart: Number and proportion of samples positive for influenza, by type, PHE North of England



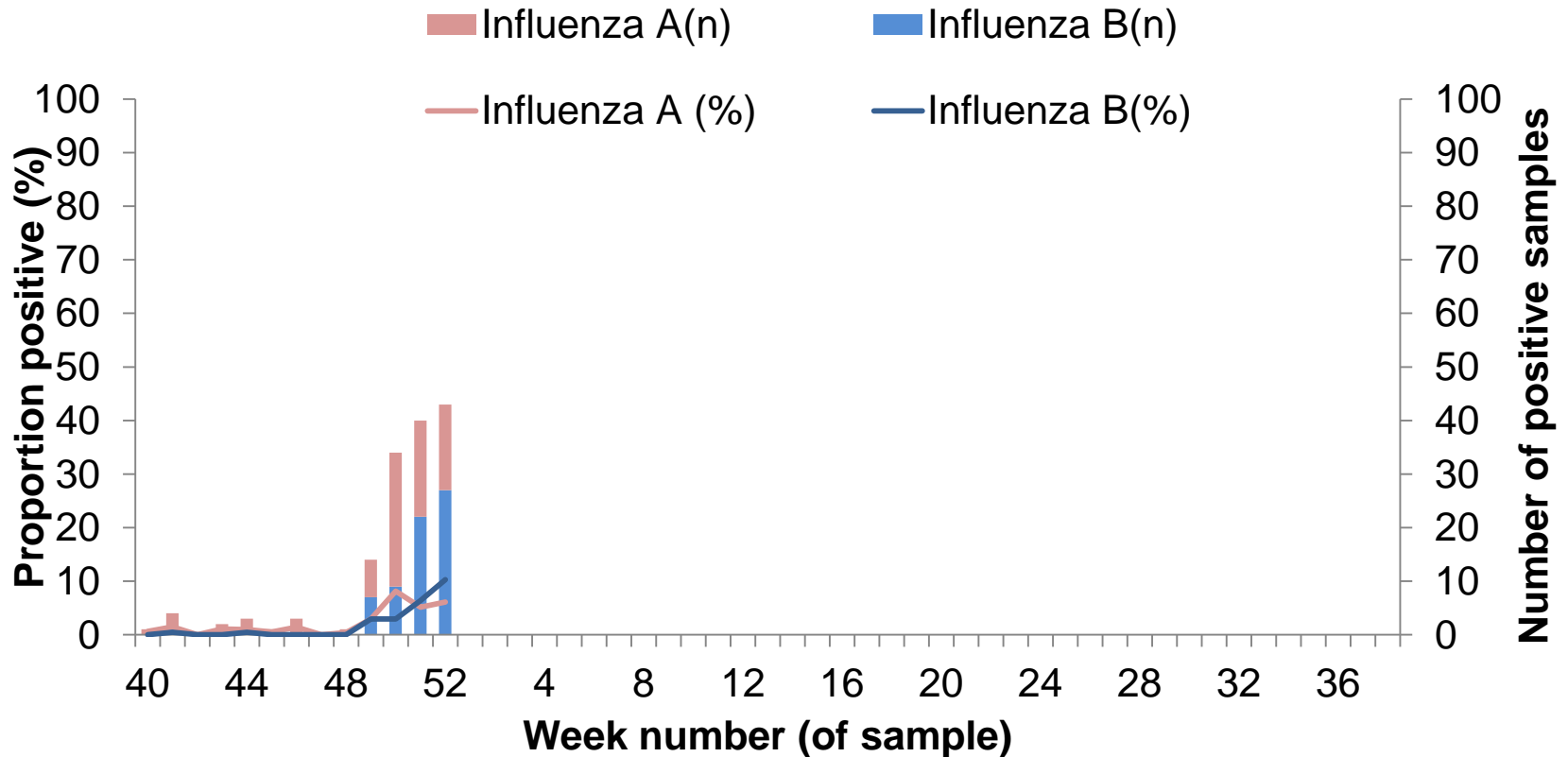


DataMart: Number and proportion of samples positive for influenza, by type, PHE Midlands and East of England



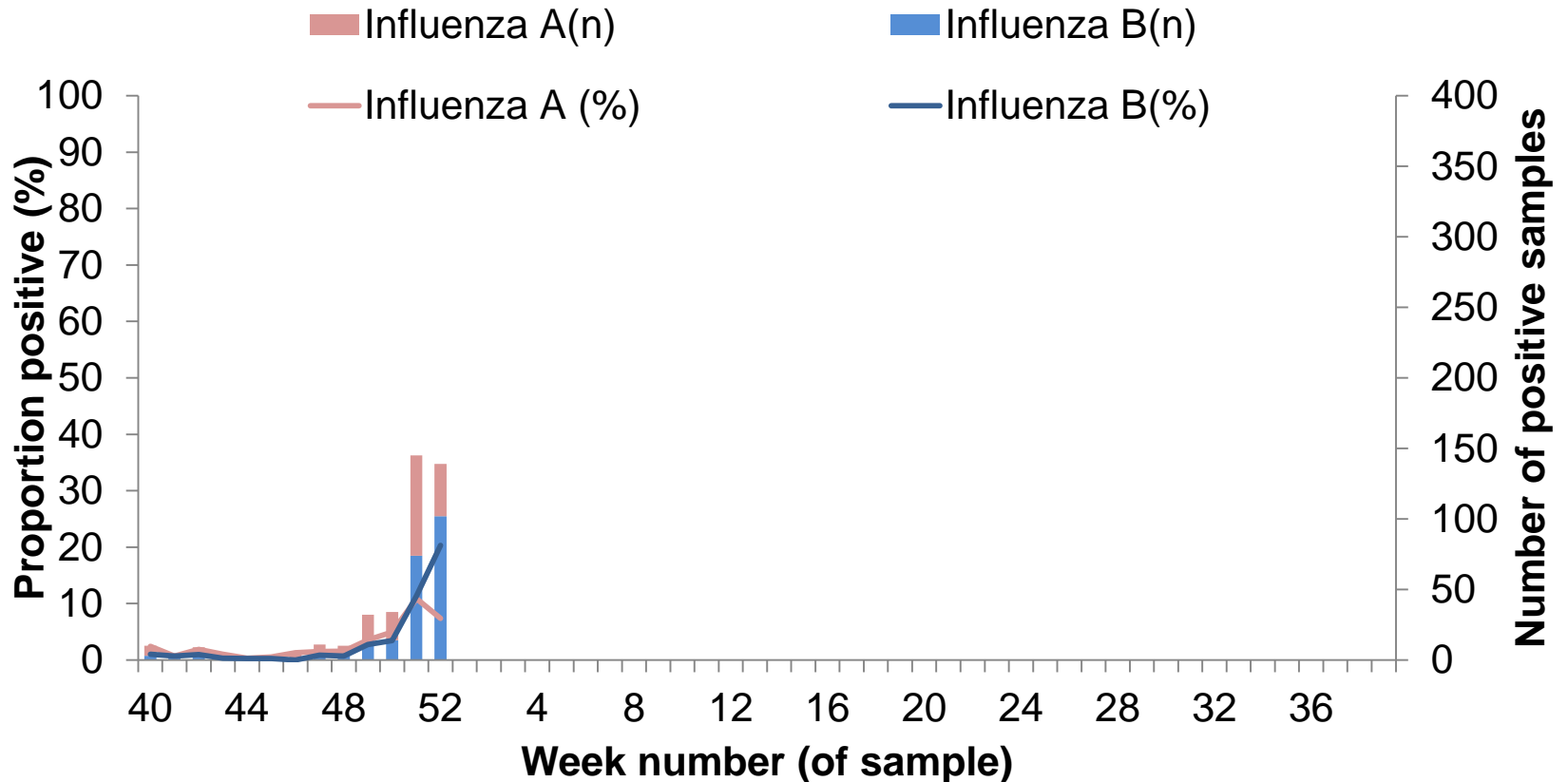


DataMart: Number and proportion of samples positive for influenza, by type, PHE London



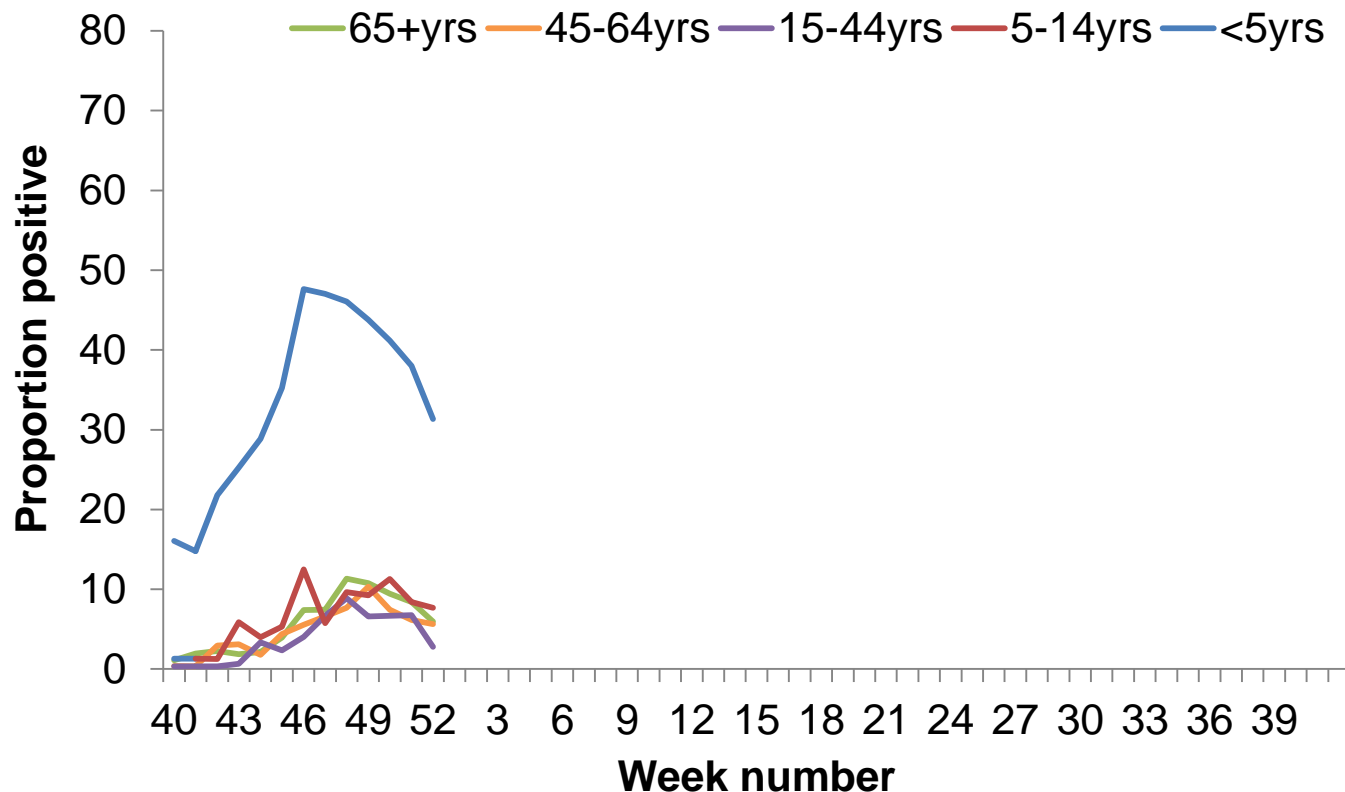


DataMart: Number and proportion of samples positive for influenza, by type, PHE South of England



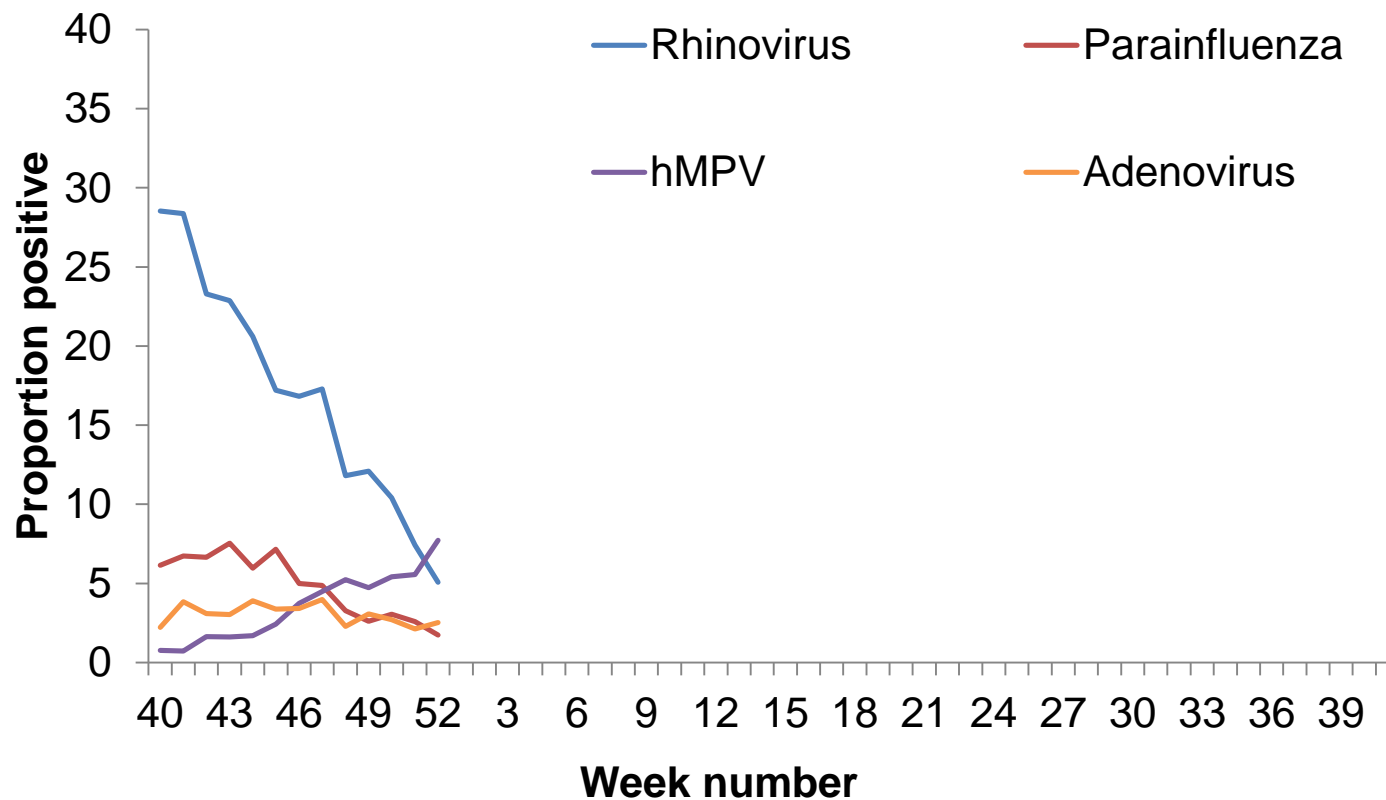


DataMart: Proportion of samples positive for RSV, by age group





DataMart: Proportion of samples positive for other viruses





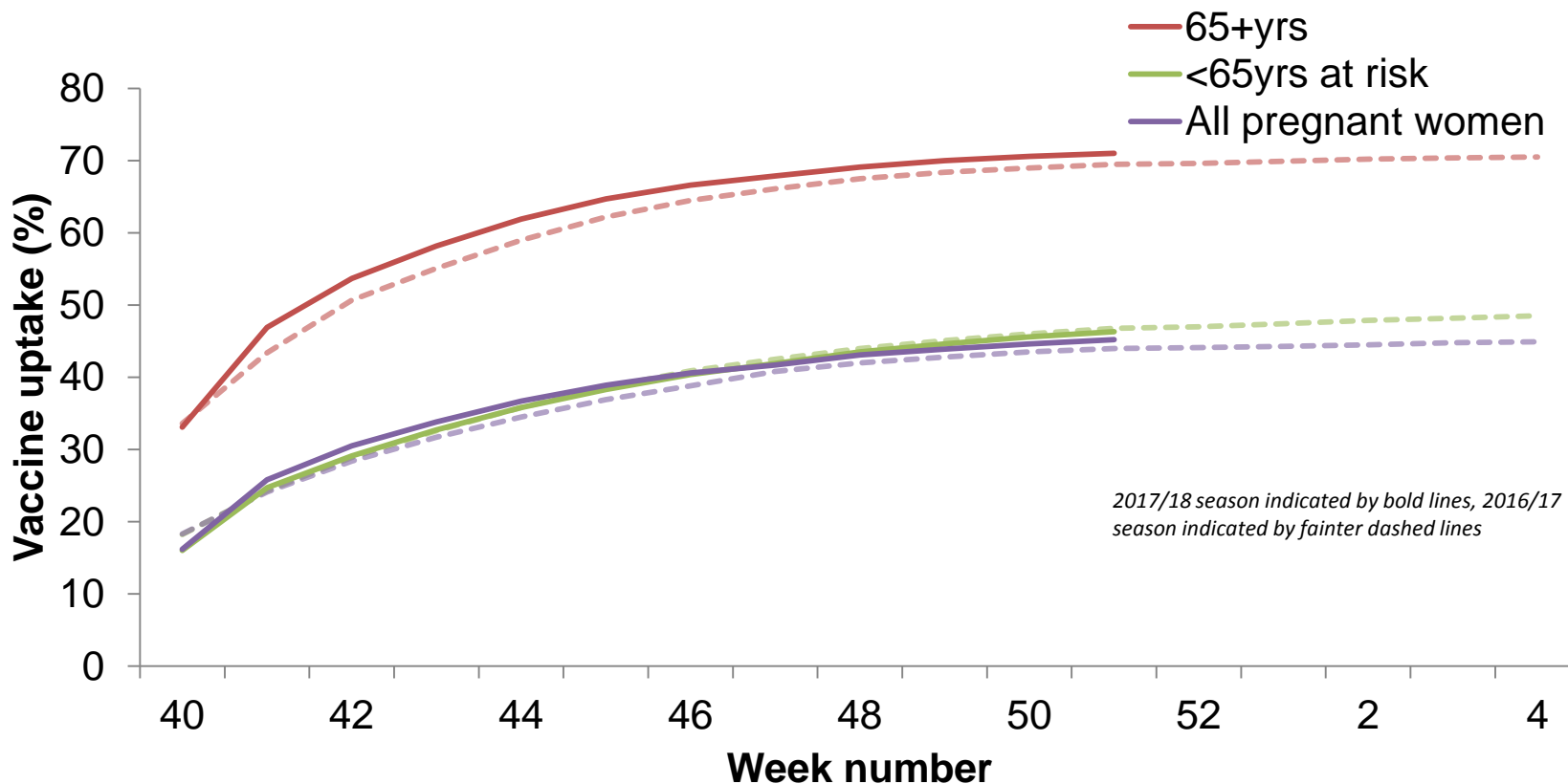
Public Health
England

Influenza vaccination



Seasonal influenza vaccine uptake in targeted groups, 2017/18, England

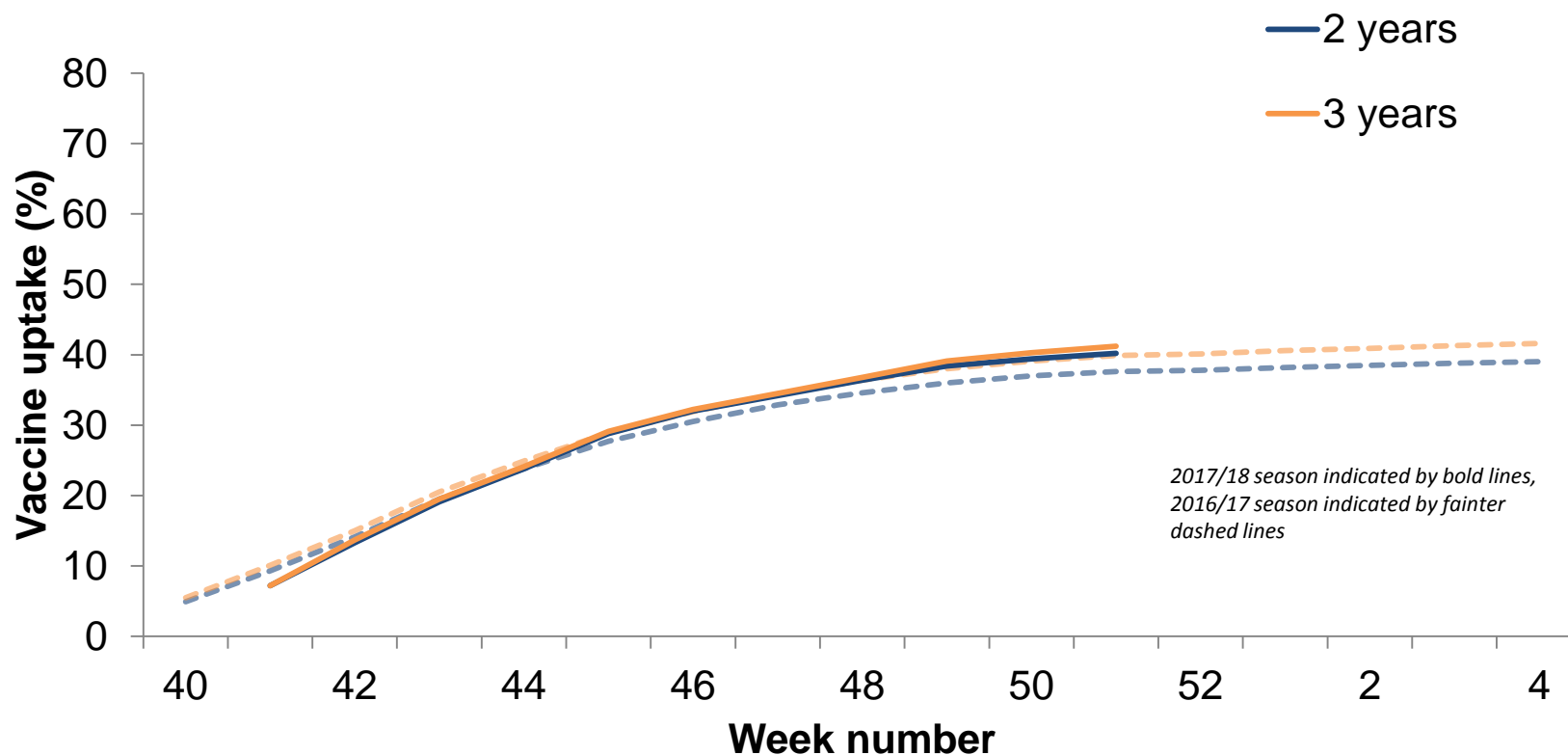
This slide has not been updated with week 52 data as vaccine uptake data is not available due to the holiday period





Seasonal influenza vaccine uptake in targeted groups, 2017/18, England

This slide has not been updated with week 52 data as vaccine uptake data is not available due to the holiday period



2017/18 season indicated by bold lines,
2016/17 season indicated by fainter
dashed lines



Links

- Sources of UK flu surveillance data:

<https://www.gov.uk/sources-of-uk-flu-data-influenza-surveillance-in-the-uk>

- Weekly flu report

<https://www.gov.uk/government/statistics/weekly-national-flu-reports>