



Ministry
of Defence



██████████ LLB(Hons)
DE&S Secretariat (Land Equipment)

DESSEC-PolSecLE-JSC-WPNS@mod.uk



Defence Equipment & Support
Maple 0a # 2043
MOD Abbey Wood
Bristol BS34 8JH



Via:
██████████

19th September 2017 Our Ref: FOI2017/08132

Dear ██████████,

Thank you for your email of 24th August 2017 requesting the following information:

AESP 2320-D-128-811 Mod Instruction No.8

I wish to make a Freedom of Information request for the above document.

I am treating your correspondence as a request for information under the Freedom of Information Act 2000 (FOIA).

A search for the information has now been completed within the Ministry of Defence, and I can confirm that information in scope of your request is held and is attached to this letter.

If you have any queries regarding the content of this letter, please contact this office in the first instance.

If you wish to complain about the handling of your request, or the content of this response, you can request an independent internal review by contacting the Information Rights Compliance team, Ground Floor, MOD Main Building, Whitehall, SW1A 2HB (e-mail CIO-FOI-IR@mod.uk). Please note that any request for an internal review should be made within 40 working days of the date of this response.

If you remain dissatisfied following an internal review, you may raise your complaint directly to the Information Commissioner under the provisions of Section 50 of the Freedom of Information Act. Please note that the Information Commissioner will not normally investigate your case until the MOD internal review process has been completed. The Information Commissioner can be contacted at: Information Commissioner's Office, Wycliffe House, Water Lane, Wilmslow, Cheshire, SK9 5AF. Further details of the role and powers of the Information Commissioner can be found on the Commissioner's website at <https://ico.org.uk/>.

Yours sincerely,

██████████

██████████

DES SEC Pol Sec Land Equipment

**TRUCK UTILITY LIGHT (TUL) HS
TRUCK UTILITY MEDIUM (TUM) HS
AND (TUM) AMBULANCE HS
MODIFICATION INSTRUCTION No 8**

Sponsor:

CSV(Sp) IPT

Publication Agency:

Defence Logistics Organisation
Project No:LLVUty-16

AMENDMENT RECORD

Amdt No.	Incorporated By (Signature)	Date	Amdt No.	Incorporated By (Signature)	Date
1			4		
2			5		
3			6		

SUBJECT: Input/output Porthole for communications/power cables installation.
(Approval No LSTP 12-6665)

INTRODUCTION

- 1 This instruction details the fitting of an input/output facility for communications/power cables.
 - 1.1 Limitations on use of equipment. Nil

APPLICABILITY

- 2 Truck Utility Light (TUL) HS FFR, Truck Utility Medium (TUM) HS FFR vehicles only.
 - 2.1 Fitted to all equipment held by user units.
 - 2.2 Unmodified stock, held at all levels of technical storage.

REASON FOR MODIFICATION

- 3 Code 2 - to improve operational performance

PRIORITY

- 4 Army: Routine
RAF: Class 3

ESTIMATED TIME REQUIRED

- 5 Embodiment: 2 man-hours

MODIFICATION IMPLEMENTATION PLAN

6

6.1 This modification is to be implemented by:

ARMY - Units authorised to carry out levels 2, 3 and 4 maintenance.
RAF - Units not later than the next routine maintenance and Vehicles depots before the next issue of vehicle.

6.2 Associated modification instructions. Nil

6.3 Modification plate strike action: NA

Action required by

7

7.1 Units and establishments holding equipment.

7.1.1 Examine vehicle documents to see if modification is applicable.

7.1.2 Examine equipment or modification record plate to see if modification is embodied and where necessary Units with level 2 REME Support demand the stores required.

7.1.3 ARMY - On receipt of stores, request REME to modify equipment.

7.1.4 ARMY - Record the modification subject and AESP number in equipment documents.

7.1.5 RAF - Record modification details on AF G1084A and Form 4870. Units operating STAMA are also to record modification details on ADP MTMS job Certification Sheet and to follow the procedures laid down in AP 100C-08A.

7.2 Army units authorised to carry out levels 2,3 and 4 maintenance and RAF units.

7.2.1 ARMY - When requested by users or during overhaul of equipments on charge without REME level 2 Support, obtain the items listed in Para 8 and carry out this modification.

7.2.2 RAF – On receipt of stores, embody modification.

7.2.3 Record completion details of modification against appropriate entry in equipment documents.

7.2.4 Complete AF G1084A when reporting completion of the modification to FORWARD (RAF) using the following code:

RAF: MODIFICATION CODE AFN 154

NOTE

RAF units operating STAMA are also to complete ADP MTMS Job Certification Sheet and to follow the procedures laid down in 100C-08A.

7.3 All recipients of this instruction. Add particulars to AESP 2320-D-128-811 Mod instr index.

Stores tools and equipment

8

8.1 Stores to be demanded.

8.1.1 The following modification set is to be demanded quoting this instruction authority for demand.

Item No	DMC	NSN/Part No	Designation	Qty Per eqpt
	7XD	2510-99-148-1296	Input/Output Facility Mod set: comprising:	2
1			Sleeve	(2)
2			Cover, sleeve	(2)
3			Washer, foam	(8)
4			Ring retaining (Soft top only)	(2)
5			Coupling, sleeve assembly	(2)
6			Strap, support	(2)

8.2 Stores or suitable equipment to be obtained locally.

Item No	NSN/Part No	Designation	Qty Per eqpt
7	7510-99-220-1153	Water resistant fabric tape	As reqd

8.3 Special tools and test equipment required.

Item No	NSN/Part No	Designation	Qty Per eqpt
8	F1/3460-99-137-4928	Arbour, hole saw	1
9	F1/3455-99-137-5656	Blade, hole saw	1

Sequence of operations

NOTE

The item numbers of Para 8 are used as references throughout this instruction.

9 Carry out the modification as follows:

WARNING

HEALTH AND SAFETY. WHEN CUTTING HOLES IN THE HOOD, GOGGLES AND MASK MUST BE WORN TO PREVENT INHALATION OF HARMFUL DUST AND TO PROTECT EYES.

Soft top only

Refer to Fig 1

9.1 Place tape, to aid marking out, on the rear of the vehicles in the area where the holes are to be cut.

9.2 Mark out the centres for the holes.

9.3 Mark out two 98 mm (3,86 in.) diameter circles on hood on either side of the flap.

9.4 Using a suitable cutting tool i.e. a sharp knife and a piece of hard board, cut out two holes in the hood.

Refer to Fig 2

9.5 Slide the sleeve (item 1) through the coupling (item 5) folding the end of the sleeve over the coupling as shown in inset.

9.6 Ensure that the stitched edge of the sleeve is aligned with the recess on the coupling.

NOTE

When fitting the coupling ensure that the pivot pin is at the top.

9.7 Fit a foam washer (item 3) to the coupling and slide through hood.

9.8 Fit two foam washers and the retaining ring (items 3 and 4).

9.9 Fit the sleeve cover (item 2) lining up the slots with the tags and applying pressure to the top until it clips into place then repeat at the bottom

9.10 Loop support strap through sleeve cover and over the rear roll bar ensuring that the strap is inboard of the outer radiated hazard strap and tension to suit.

9.11 Cut a piece of 2 in. x 1.5 in wide waterproof tape (item 7) and fit over the lower clip inside the coupling sleeve assembly (item 5) to seal.

Hard top only

Refer to Fig 1

9.12 Place tape on the rear of the vehicle in the area where the holes are to be cut.

9.13 Mark out the centres for the holes

9.14 Drill two 6,0 mm pilot holes through (hard top only).

9.15 Using a suitable cutting tool (items 8 and 9) cut two holes one on either side of the rear door.

9.16 Remove sharp edges and clear up debris.

Refer to Fig 2

9.17 Slide sleeve (item 1) through coupling (item 5) folding the end of the sleeve over the coupling as shown in inset.

9.18 Ensure that the stitched edge of the sleeve is aligned with the recess on the coupling.

NOTE

When fitting the coupling ensure that the pivot pin is at the top.

9.19 Fit a foam washer (item 3) to the coupling and slide through hardtop.

9.20 Fit two foam washers (item 3).

9.21 Finally fit the sleeve cover (item 2) lining up the slots with the tags and applying pressure to the top until it clips into place then repeat at the bottom.

9.22 Loop support strap through sleeve cover and over the rear roll bar ensuring that the strap is inboard of the outer radiated hazard strap and tension to suit.

9.23 Check to ensure the coupling does not rotate, if it does dismantle and add additional foam washer between the hardtop and the cover.

9.24 Cut a piece of 2 in. x 1.5 in wide waterproof tape (refer to item 7) and fit over the lower clip inside the coupling sleeve assembly (item 5) to seal.

Testing after embodiment

10 Nil

EFFECT ON WEIGHT

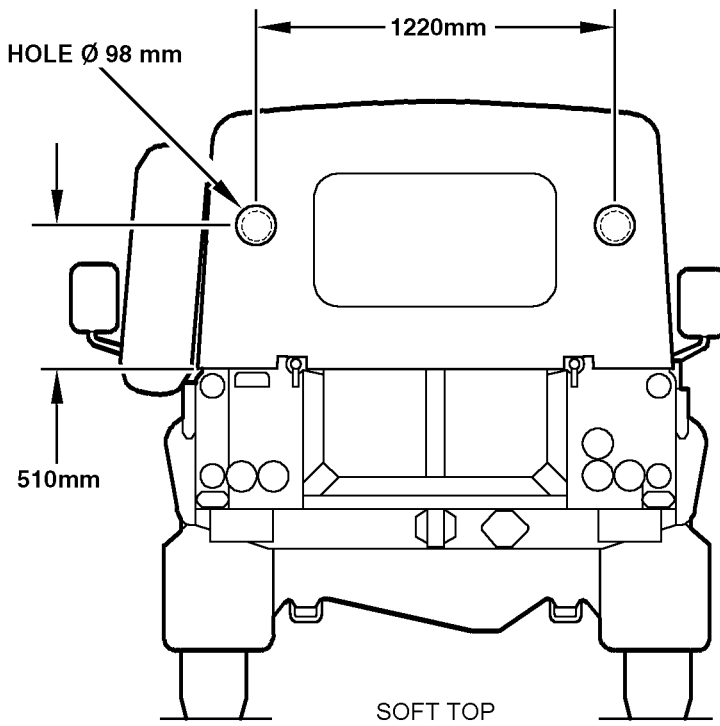
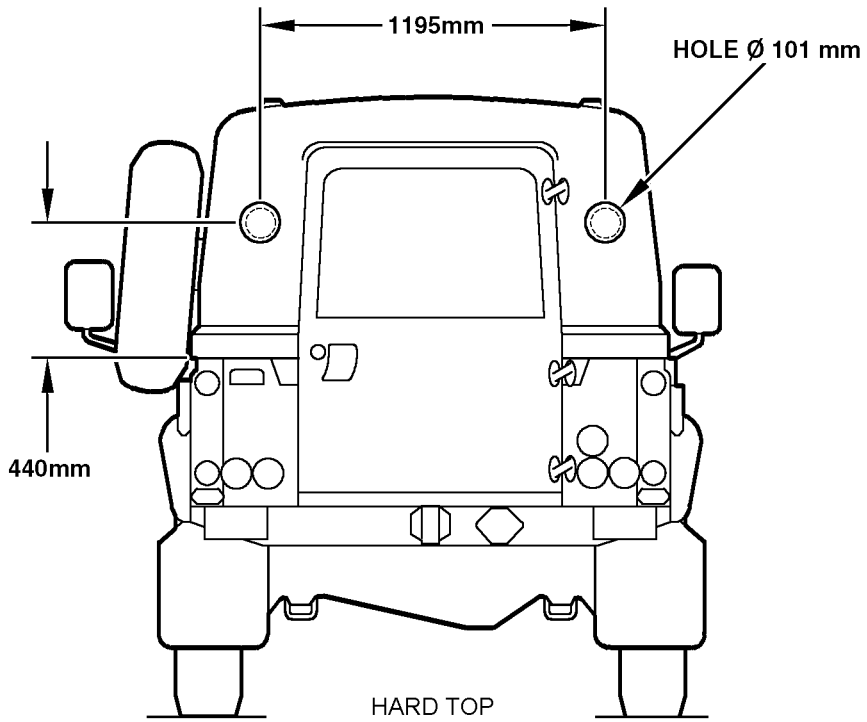
11 Negligible

PUBLICATION AMENDMENTS

NOTE

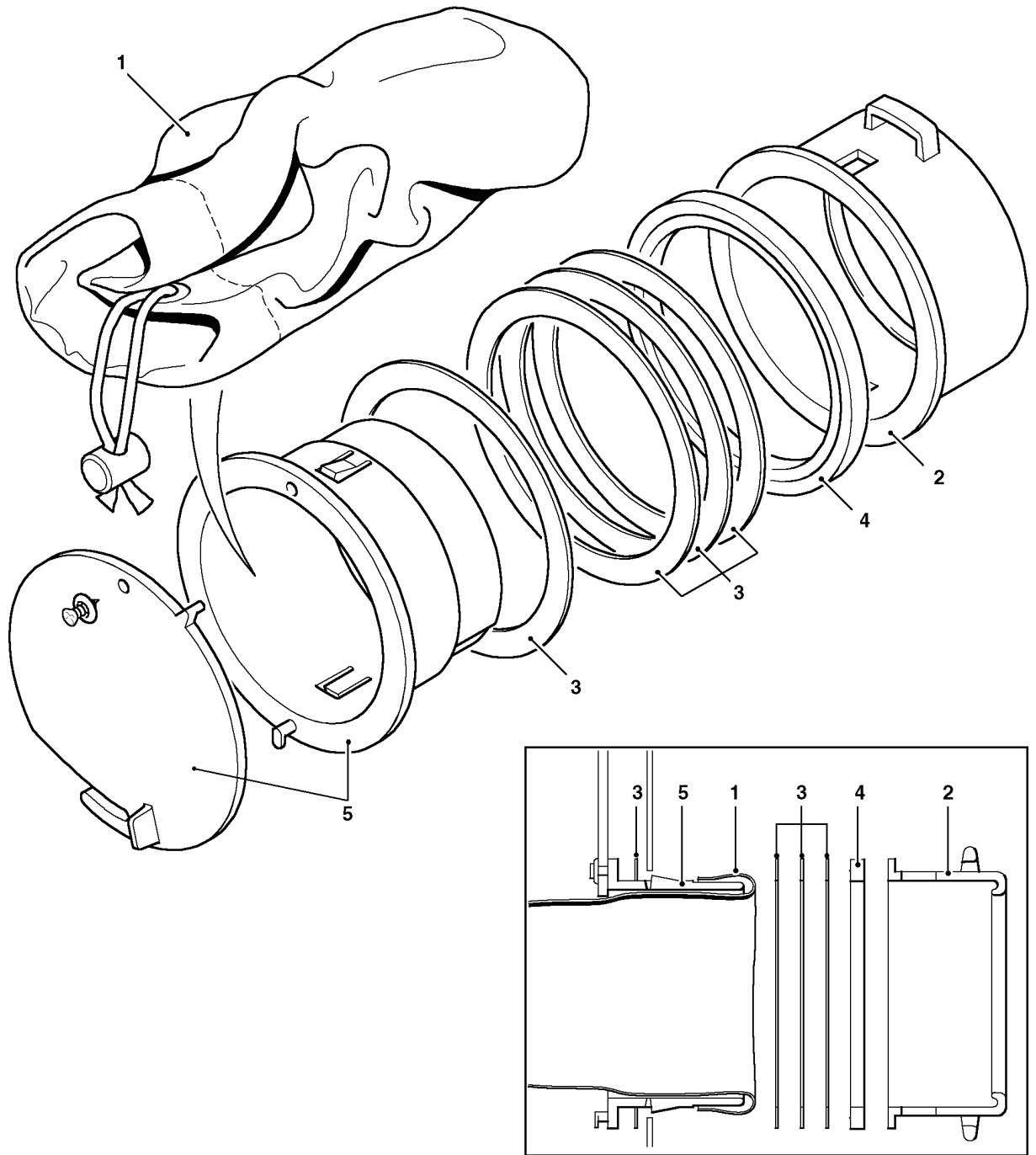
Necessary amendment will be issued separately.

12 Nil



MIL1755

Fig 1 Position of the input/output sleeve holes



MIL1754

- | | | | |
|---|------------------|---|--------------------------------|
| 1 | Sleeve | 4 | Retaining ring (Soft top only) |
| 2 | Sleeve cover | 5 | Sleeve coupling |
| 3 | Neoprene washers | 6 | Support strap (Not shown) |

Fig 2 Input/output sock assembly