



FE CHOICES

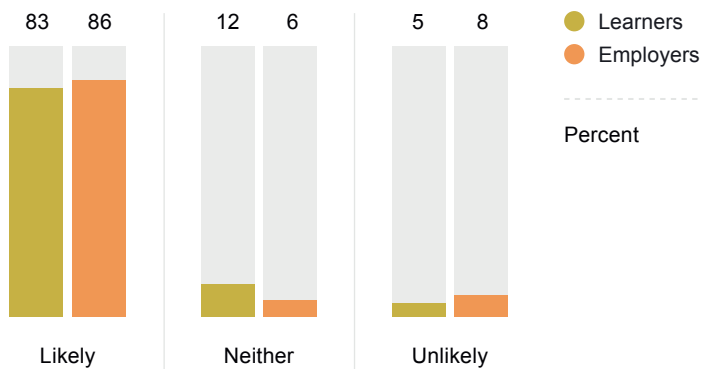
2016 to 2017

The FE Choices Learner and Employer Satisfaction Surveys collect learners' and employers' ratings on their college or training provider. Over 340,000 learners and 60,000 employers across England took part in the 2016 to 2017 surveys. Participating employers and learners were in receipt of Education and Skills Funding Agency funded learning or training.

Recommendation

4 in 5

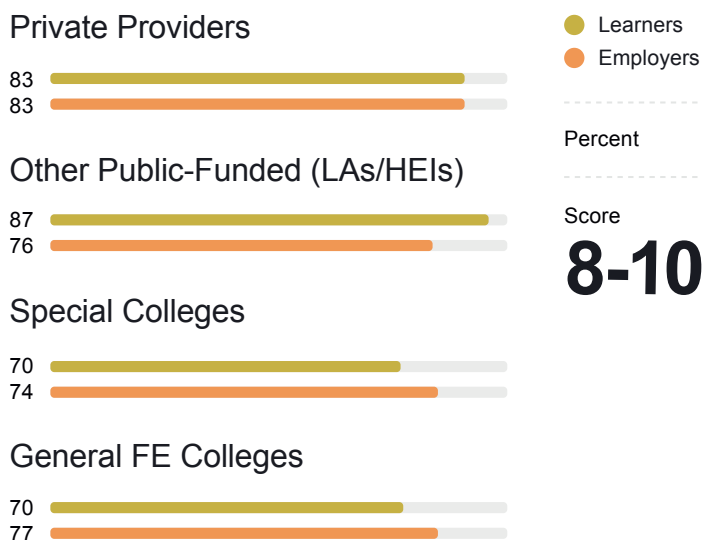
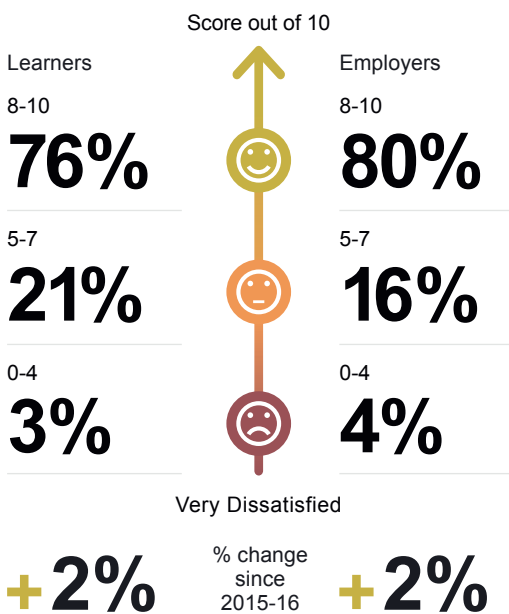
learners and employers would recommend their learning provider



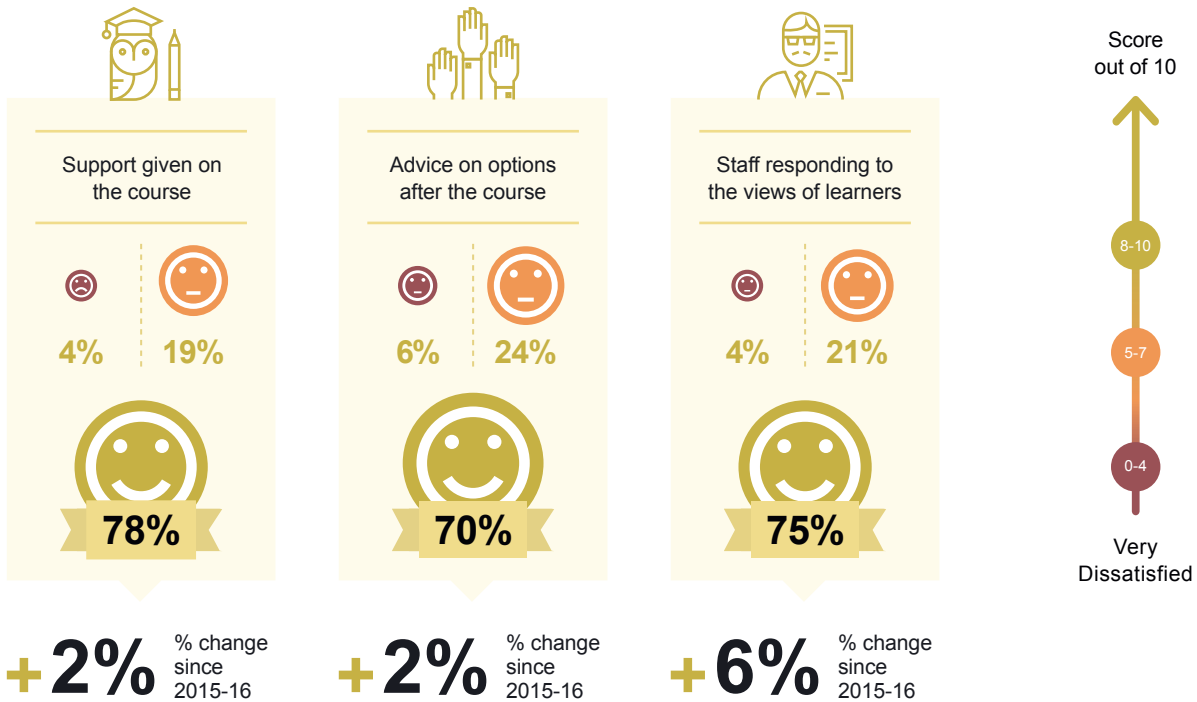
Satisfaction with quality of teaching/training high and improving



Satisfaction levels high among users of private training providers



High and improving levels of satisfaction among learners



Satisfaction levels have also risen among employers, though they are still less positive about their ability to influence the training

