

# Woodbarn Farm

(/A404//13.10//) SMIS Structure Key: 18761

**WARNING - Asbestos is present. Be familiar with SMIS Help Guide and the AAP, follow your own safe working procedures.**



**Principal Inspection**

**20 January 2014**



**HA Regional Office**  
South East  
Federated House  
London Road  
Dorking  
RH4 1SZ

**Enterprise Mouchel - Area 3**

[Redacted text]

**Principal Inspection Report for Woodbarn Farm (/A404//13.10//)****(Authorised)****Signatures**

Inspected by \_\_\_\_\_ Signature \_\_\_\_\_ Date \_\_\_\_\_

Checked by \_\_\_\_\_ Signature \_\_\_\_\_ Date \_\_\_\_\_

Authorised by \_\_\_\_\_ Signature \_\_\_\_\_ Date \_\_\_\_\_

**Principal Inspection Report for Woodbarn Farm (/A404//13.10//)****(Authorised)****Contents****Summary****Observations/Defects Confirmed at this Inspection****Recommendations**

Reviewed Maintenance Actions confirmed through this and outstanding from other Inspections

Unreviewed Maintenance Actions confirmed through this and outstanding from other Inspections

Inspections and Monitoring Scheduled as a result of this Inspection

Additions to the next Routine Maintenance

Reviewed Maintenance Actions to be Referred to Third Parties

Unreviewed Maintenance Actions to be Referred to Third Parties

**Maintenance Actions Addressed By Inspector On Site****Outstanding Observations/Defects NOT Confirmed at this Inspection****Reviewed Maintenance Actions from Sources other than Inspections****Unreviewed Maintenance Actions from Sources other than Inspections****Other Planned Inspections****Annexes**

Annex 1 - Structure Report

## Principal Inspection Report for Woodbarn Farm (/A404/13.10/)

(Authorised)

### Summary

<b>Structure Key</b>	18761	<b>Agent Name</b>	Enterprise Mouchel - Area 3
<b>Commissioned</b>	01/01/1972	<b>O.S. Grid Ref East/North</b>	486063 / 188795
<b>Bridge Type</b>	Accommodation Access Underbridge		
<b>Length</b>	8.50	<b>Number of Spans</b>	1
<b>Date Inspected</b>	20/01/2014	<b>Overall Condition</b>	Fair
<b>Weather</b>	Clear, Dry, Cool		
<b>Inspected by</b>	[REDACTED]		
<b>Authorised by</b>	[REDACTED]		
<b>Authorisation date</b>	17/02/2014		
<b>Method of Inspection</b>	On Foot, Visual		
<b>Equipment Used</b>	PPE, Inspection Tools		
<b>Parts of Structure Not Inspected</b>	Foundations, Waterproofing, Buried Surfaces		

### General Description

N/A

### Articulation

N/A

### Inspection Summary

Structure found to be in generally fair condition due to active water penetration through to the south abutment, areas of major cracking across the carriageway surfacing and exposed reinforcement to the parapet edge beams.

Minor defects include cracking to the abutments and deck verges.

Principal Inspection Report for Woodbarn Farm (/A404//13.10//)  
(Authorised)

Inspection Photographs



01 - East Elevation 20.1.14



02 - West Elevation 20.1.14

**Principal Inspection Report for Woodbarn Farm (/A404//13.10//)**  
**(Authorised)**

---



03 - North Abutment 20.1.14



04 - South Abutment 20.1.14

**Principal Inspection Report for Woodbarn Farm (/A404//13.10//)**  
**(Authorised)**

---



05 - North East Wing Wall 20.1.14



06 - North West Wing Wall 20.1.14

**Principal Inspection Report for Woodbarn Farm (/A404//13.10//)**  
**(Authorised)**

---



07 - South East Wing Wall 20.1.14



08 - South West Wing Wall 20.1.14



**Principal Inspection Report for Woodbarn Farm (/A404//13.10//)**  
**(Authorised)**

---



09 - Deck Soffit Looking West 20.1.14



10 - View Over Northbound Carriageway Looking North 20.1.14

**Principal Inspection Report for Woodbarn Farm (/A404//13.10//)**  
**(Authorised)**

---



11 - View Over Northbound Carriageway Looking South 20.1.14



12 - View Over Southbound Carriageway Looking South 20.1.14

**Principal Inspection Report for Woodbarn Farm (/A404//13.10//)**  
**(Authorised)**

---



13 - View Over Southbound Carriageway Looking North 20.1.14



14 - East Parapet 20.1.14

**Principal Inspection Report for Woodbarn Farm (/A404//13.10//)**  
**(Authorised)**

---



15 - West Parapet 20.1.14

**Principal Inspection Report for Woodbarn Farm (/A404//13.10//)**  
**(Authorised)**

**Observations/Defects Confirmed at this Inspection**

**Principal Inspection Report for Woodbarn Farm (/A404//13.10//)**

(Authorised)

**Observations/Defects Confirmed at this Inspection**

Not Applicable

<b>Components</b>	Centre Deck - West Parapet Plinth, Centre Deck - East Parapet Plinth
<b>Defect Type</b>	ER - Exposed reinforcement
<b>Extent</b>	SC - Defect present in 5% to not more than 20% of area or length of element
<b>Severity</b>	D3 - Moderate: Defect is probably causing damage to element or structure, or is likely to do so in the near future
<b>Priority</b>	Medium
<b>Comments</b>	Exposed reinforcement to east and west parapet edge beams due to low cover

Exposed reinforcement to west edge beam, north end 20.1.14



Exposed reinforcement to west edge beam elevation 20.1.14



**Principal Inspection Report for Woodbarn Farm (/A404//13.10//)**

**(Authorised)**

**Observations/Defects Confirmed at this Inspection**

Exposed reinforcement to west  
edge beam elevation 20.1.14



Exposed reinforcement to west  
edge beam elevation 20.1.14



**Principal Inspection Report for Woodbarn Farm (/A404//13.10//)**

**(Authorised)**

**Observations/Defects Confirmed at this Inspection**

Exposed reinforcement to east edge  
beam elevation 20.1.14



Exposed reinforcement to west  
edge beam elevation 20.1.14






**Principal Inspection Report for Woodbarn Farm (/A404//13.10//)**

(Authorised)

**Observations/Defects Confirmed at this Inspection**

**Substructure**

<b>Components</b>	South Abutment - Abutment Wall for South Abutment
<b>Defect Type</b>	WS - Water stain 
<b>Extent</b>	SB - Defect present in not more than 5% of area or length of element
<b>Severity</b>	D3 - Moderate: Defect is probably causing damage to element or structure, or is likely to do so in the near future
<b>Priority</b>	Medium
<b>Comments</b>	Running water and water staining to south abutment west end

Water staining to south abutment, west end 20.1.14





Running water to south abutment west end return 20.1.14



**Principal Inspection Report for Woodbarn Farm (/A404//13.10//)**

**(Authorised)**

**Observations/Defects Confirmed at this Inspection**

<b>Components</b>	South Abutment - Abutment Wall for South Abutment, North Abutment - Abutment Wall for North Abutment
<b>Defect Type</b>	DSCr - Drying shrinkage crack
<b>Extent</b>	SB - Defect present in not more than 5% of area or length of element
<b>Severity</b>	D2 - Minor: Defect is unlikely to be causing damage to the element or structure now or unlikely to do so in the near future
<b>Priority</b>	Low
<b>Comments</b>	Minor cracking to abutment walls
Vertical cracking to north abutment 20.1.14	
Vertical cracking to north abutment 20.1.14	

**Principal Inspection Report for Woodbarn Farm (/A404//13.10//)**

**(Authorised)**

**Observations/Defects Confirmed at this Inspection**

Vertical cracking to south abutment  
20.1.14



Minor vertical cracking to north  
abutment from weep hole 20.1.14



**Principal Inspection Report for Woodbarn Farm (/A404//13.10//)**

**(Authorised)**

**Observations/Defects Confirmed at this Inspection**

Minor vertical cracking to north abutment from weephole 20.1.14



Vertical cracking to south abutment 20.1.14



<b>Components</b>	North Abutment - Abutment Wall for North Abutment
<b>Defect Type</b>	CLe - Calcite Leaching
<b>Extent</b>	SB - Defect present in not more than 5% of area or length of element
<b>Severity</b>	D2 - Minor: Defect is unlikely to be causing damage to the element or structure now or unlikely to do so in the near future
<b>Priority</b>	Low
<b>Comments</b>	Minor leachate through cracking to north abutment

**Principal Inspection Report for Woodbarn Farm (/A404//13.10//)**

**(Authorised)**

**Observations/Defects Confirmed at this Inspection**

Minor leachate through cracking to north abutment 20.1.14



**Components** South Abutment - Abutment Wall for South Abutment

**Defect Type** WS - Water stain

**Extent** SB - Defect present in not more than 5% of area or length of element

**Severity** D2 - Minor: Defect is unlikely to be causing damage to the element or structure now or unlikely to do so in the near future


**Priority** Low

**Comments** Water staining to south abutment centre construction joint

Minor water staining to south abutment centre at construction joint 20.1.14



**Components** North Abutment - Abutment Wall for North Abutment

**Defect Type** WS - Water stain 

**Extent** SB - Defect present in not more than 5% of area or length of element

**Severity** D2 - Minor: Defect is unlikely to be causing damage to the element or structure now or unlikely to do so in the near future

**Priority** Low

**Comments** Water staining at top of north abutment, west end

**Principal Inspection Report for Woodbarn Farm (/A404//13.10//)**

**(Authorised)**

**Observations/Defects Confirmed at this Inspection**

Water staining at top of north abutment, west end 20.1.14



**Components** North Abutment - West Wing Wall

**Defect Type** Veg - Vegetation growth on the structure or encroaching on the structure

**Extent** SB - Defect present in not more than 5% of area or length of element

**Severity** X2 - Defects unlikely to affect condition of adjacent elements now or in the near future

**Priority** Low

**Comments** Vegetation along top of north west wing wall

Vegetation along top of north west wing wall 20.1.14



**Components** North Abutment - Abutment Wall for North Abutment, South Abutment - Abutment Wall for South Abutment

**Defect Type** WStA - Water stain (appearance only)

**Extent** SB - Defect present in not more than 5% of area or length of element

**Severity** A1 - Defect in tolerable condition

**Priority** Low

**Comments** Minor water staining to abutments due to active weepholes

**Principal Inspection Report for Woodbarn Farm (/A404//13.10//)**

**(Authorised)**

**Observations/Defects Confirmed at this Inspection**

Active weepholes to north abutment  
20.1.14



Active weepholes to south abutment  
20.1.14




**Principal Inspection Report for Woodbarn Farm (/A404//13.10//)**

**(Authorised)**

**Observations/Defects Confirmed at this Inspection**

**Carriageway**

<b>Components</b>	Centre Deck - Northbound Surfacing, Centre Deck - Southbound Surfacing
<b>Defect Type</b>	CrCo - Cracked 
<b>Extent</b>	SB - Defect present in not more than 5% of area or length of element
<b>Severity</b>	D3 - Moderate: Defect is probably causing damage to element or structure, or is likely to do so in the near future
<b>Priority</b>	Medium
<b>Comments</b>	Cracking across northbound and southbound carriageway surfacing above buried joints due to lack of provision for movement

Cracking across southbound lane 2, south end 20.1.14



Major cracking across northbound lane 2 towards north end 20.1.14





**Principal Inspection Report for Woodbarn Farm (/A404//13.10//)**

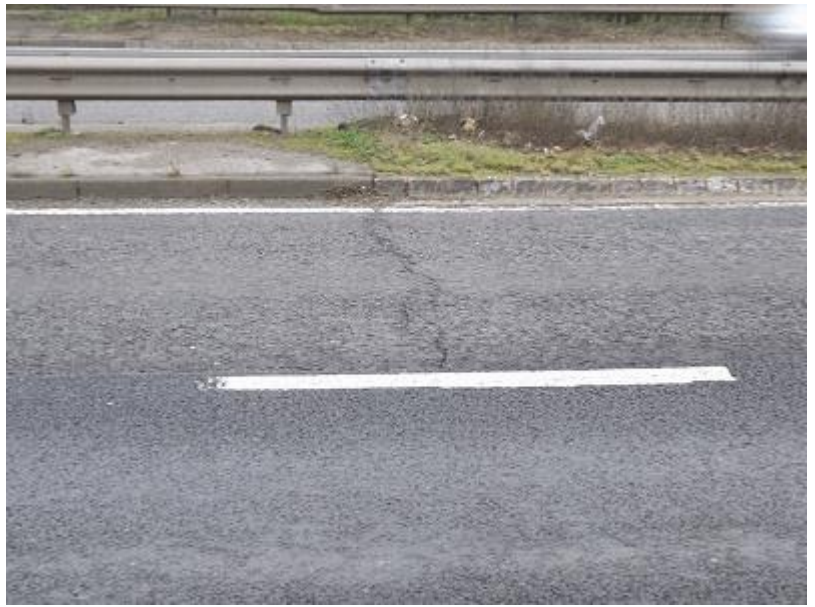
**(Authorised)**

**Observations/Defects Confirmed at this Inspection**

Major cracking across northbound lane 2, north end 20.1.14



Cracking across northbound lane 2, south end 20.1.14



**Principal Inspection Report for Woodbarn Farm (/A404//13.10//)**

**(Authorised)**

**Observations/Defects Confirmed at this Inspection**

Cracking across southbound lane 2, north end 20.1.14



**Components** Centre Deck - Northbound Surfacing, Centre Deck - Southbound Surfacing

**Defect Type** CrCo - Cracked

**Extent** SB - Defect present in not more than 5% of area or length of element

**Severity** D2 - Minor: Defect is unlikely to be causing damage to the element or structure now or unlikely to do so in the near future

**Priority** Low

**Comments** Minor cracking to deck verges

Cracking to east verge, south end 20.1.14



**Principal Inspection Report for Woodbarn Farm (/A404//13.10//)**

(Authorised)

**Observations/Defects Confirmed at this Inspection**

Cracking along west verge 20.1.14



**Components** Centre Deck - Southbound Surfacing

**Defect Type** Disp - Displaced or misaligned

**Extent** SB - Defect present in not more than 5% of area or length of element

**Severity** D2 - Minor: Defect is unlikely to be causing damage to the element or structure now or unlikely to do so in the near future

**Priority** Low

**Comments** Displaced east verge kerbstone, north end

Displaced east verge kerbstone, north end 20.1.14




## Principal Inspection Report for Woodbarn Farm (/A404//13.10//)

(Authorised)

### Observations/Defects Confirmed at this Inspection

#### Superstructure

<b>Components</b>	Centre Deck - Main Slab, Longitudinal Beams - Longitudinal Beams West edge 1, Centre Deck - Longitudinal Beams	
<b>Defect Type</b>	Cr - Crack of uncertain origin or a combination of causes	
<b>Extent</b>	SB - Defect present in not more than 5% of area or length of element	
<b>Severity</b>	D2 - Minor: Defect is unlikely to be causing damage to the element or structure now or unlikely to do so in the near future	
<b>Priority</b>	Low	
<b>Comments</b>	Cracked edge beam at east side of south abutment	
<b>Components</b>	Longitudinal Beams - Longitudinal Beams 23, Longitudinal Beams - Longitudinal Beams 22	
<b>Defect Type</b>	WS - Water stain	
<b>Extent</b>	SB - Defect present in not more than 5% of area or length of element	
<b>Severity</b>	D2 - Minor: Defect is unlikely to be causing damage to the element or structure now or unlikely to do so in the near future	
<b>Priority</b>	Low	
<b>Comments</b>	Minor water staining to main beam soffit near mid span	
	Minor water staining to main beam soffit near mid span 20.1.14	

### Reviewed Maintenance Actions confirmed through this and outstanding from other Inspections

N.B. The Origin of Work for each of these Maintenance Actions is Routine Inspection (currently Principal, General, Special and Monitoring).

<b>Maintenance Object</b>	Expansion Joint	<b>Maintenance Action</b>	Provide
<b>Estimated Cost</b>	£6,000	<b>Recomm. Action Date</b>	01/08/2010
<b>Priority Category</b>	3	<b>Risk Score</b>	78
<b>Comments</b>	Saw cut above buried joints and insert bituminous filler		
<b>Maintenance Object</b>	Concrete Deck	<b>Maintenance Action</b>	Repair
<b>Estimated Cost</b>	£20,000	<b>Recomm. Action Date</b>	01/01/2013
<b>Priority Category</b>	3	<b>Risk Score</b>	25
<b>Comments</b>	Repair exposed reinforcement to west parapet edge beam		

## Principal Inspection Report for Woodbarn Farm (/A404//13.10//)

(Authorised)

### Outstanding Observations/Defects NOT Confirmed at this Inspection

#### Not Applicable

<b>Components</b>	Centre Deck - East Parapet Plinth		
<b>Defect Type</b>	A1 - Algal growth		
<b>Extent</b>	SC - Defect present in 5% to not more than 20% of area or length of element		
<b>Severity</b>	D1 - Defect is definitely not causing damage to element or structure		
<b>Priority</b>	Low	<b>Emergency?</b>	No
<b>No. of images</b>	0	<b>Date last confirmed</b>	30/01/2012
<b>Comments</b>	Minor algae staining to parapets		

#### Restraint System

<b>Components</b>	Centre Deck - West Parapet		
<b>Defect Type</b>	A1 - Algal growth		
<b>Extent</b>	SC - Defect present in 5% to not more than 20% of area or length of element		
<b>Severity</b>	D1 - Defect is definitely not causing damage to element or structure		
<b>Priority</b>	Low	<b>Emergency?</b>	No
<b>No. of images</b>	0	<b>Date last confirmed</b>	30/01/2012
<b>Comments</b>	Minor algae staining to parapets		

### Reviewed Maintenance Actions from sources other than Inspections

N.B. Currently these would be maintenance actions with an Origin of Work not set to Routine Inspection, e.g. BACO Parapets or ASR.  
 No other maintenance actions outstanding.

### Unreviewed Maintenance Actions from sources other than Inspections

N.B. Currently these would be maintenance actions with an Origin of Work not set to Routine Inspection, e.g. BACO Parapets or ASR.  
 No other maintenance actions outstanding.

### Other Planned Inspections

N.B. These are the planned inspections in SMIS at the time of report production (Monday, 17 February, 2014), NOT at the time of the inspection.

Type	Target Date	Reason
General	17/12/2015	
General	17/12/2017	
Principal	17/12/2019	

**Annex 1**

**Structure Report**

## Structure Report for Woodbarn Farm (/A404//13.10//)

**WARNING - Asbestos is present. Be familiar with SMIS Help Guide and the AAP, follow your own safe working procedures.**

### Structure Summary key 18761

<b>Road</b>	A404	<b>O.S. Grid Ref East/North</b>	486063 / 188795
<b>Commissioned</b>	1972	<b>Constructed</b>	1972
<b>Maintaining Agent-Area</b>	Enterprise Mouchel - Area 3-Area 3		
<b>Geographical Area</b>	Buckinghamshire	<b>Custodian-Region</b>	HA-South East
<b>Designer</b>	Buckinghamshire County Council		
<b>Last Principal Inspection</b>	20/01/2014	<b>Last General Inspection</b>	30/01/2012
<b>PI Frequency (years)</b>	6		

<b>Structure Type</b>	<b>Bridge And Large Culvert</b>		
<b>Bridge Type</b>	Accommodation Access Underbridge		
<b>High Load Route</b>	No	<b>Heavy Load Route</b>	No
<b>Scour Susceptible</b>	No	<b>DBFO</b>	No
<b>Original Design Loading</b>	HA + 37.5 HB		
<b>Number of Spans</b>	1	<b>Length</b>	8.50
<b>Tensioning</b>	Pre-Tensioned	<b>Overall Construction</b>	Concrete

#### Description of Structure

No information entered

#### Articulation

No information entered

#### Load Management for C&U and STGO Live Loading

<b>Location</b>	All Traffic Lanes	<b>Direction</b>	Both
<b>ALL</b>	24 Tonnes (Design Traffic Loading)		
<b>HB with LL</b>	37.50 (Design Traffic Loading)	<b>HB without LL</b>	
<b>SV with LL</b>		<b>SV without LL</b>	

## Structure Report for Woodbarn Farm (/A404//13.10//)

### Assessments, Inspection and Maintenance History

#### Completed Inspections

Inspection Type	Inspection Date	Inspection Reason
Principal Inspection	20/01/2014	
General Inspection	30/01/2012	
General Inspection	10/07/2009	
Principal Inspection	04/12/2007	
General Inspection	07/03/2006	
General Inspection	14/04/2003	
Principal Inspection	17/12/2001	
General Inspection	09/06/1999	
General Inspection	21/08/1997	
General Inspection	15/01/1996	
Principal Inspection	08/03/1994	

#### Completed Assessments

No completed assessments found

#### Maintenance Actions Completed Through Projects Created In SMIS

No maintenance actions found

#### Additional Maintenance History

No information entered

#### Features

Bridge and Large Culvert has the Main Carriageway of the road A404 running over it maintained by Highways Agency

Centre Span has an Accommodation Access running under it with a headroom of 5.60 metres which was last checked on 04/12/2007 maintained by Highways Agency reference Mid-span, east edge

Centre Span has an Accommodation Access running under it with a critical headroom of 5.56 metres which was last checked on 04/12/2007 maintained by Highways Agency reference Mid-span west, west edge

#### Interim Measures

No interim measures present

#### Constraints

Component	Type	Name	Description
Bridge and Large Culvert	Materials	Amphibole Asbestos excluding Crocidolite	Presumed ACM - Cover blocks, drainage, joint sealant, joint filler - refer to AAP Section 3
MAIN BEAMS/TUN.PORTL	Materials	Amphibole Asbestos excluding Crocidolite	Known ACM - Permanent formwork

#### Departures

No departures present

#### Coating System for Steelwork

No Coating Systems for Steelworks present



**Structure Report for Woodbarn Farm (/A404//13.10//)**

**Coating System for Concrete**

No Concrete Coating Systems Present

**Structure Report for Woodbarn Farm (/A404//13.10//)**
**Inventory**

N.B. Inspection Elements are added for Inspection purposes only. They are shown here for information only, and it should be noted that the list of Inspection elements is not comprehensive.

**South Abutment**

<b>Support Type</b>	Cantilever Abutment	<b>Material Type</b>	Insitu Reinforced Concrete
<b>Connection Type</b>	Proprietary Elastomeric Bearings	<b>Facing Material</b>	None

**South Transition Slab - (Inspection Element)**

<b>Type</b>	TRB - Buried transition slab
-------------	------------------------------

**South Bearings**

<b>Type</b>	Elastomeric	<b>Installation Date</b>	01/01/1972
<b>Product</b>		<b>No. of Bearings</b>	44

**West Wing Wall**

<b>Anchoring System</b>	Not Known	<b>Length</b>	
		<b>Height</b>	

**East Wing Wall**

<b>Anchoring System</b>	Not Known	<b>Length</b>	
		<b>Height</b>	

**South Foundation**

<b>Type</b>	Spread Footings
-------------	-----------------

**Abutment Wall for South Abutment**

<b>Support Type</b>	Cantilever Abutment	<b>Material Type</b>	Insitu Reinforced
<b>Connection Type</b>	Proprietary Elastomeric	<b>Facing Material</b>	None

**Centre Span**

<b>Structural Form Type</b>	Other	<b>Skew</b>	0.00
<b>Min Width Between Supports</b>	0.00	<b>Date Min Width Last Checked</b>	
<b>Features Data</b>			
<b>Critical Headroom</b>		<b>Critical Headroom Last Checked</b>	

**Centre Deck**

<b>Structure Form Type</b>	Simply Supported	<b>Length</b>	8.50
<b>Construction Type</b>	Beam And Slab	<b>Width</b>	23.20
<b>Enclosure Type</b>	Not Applicable	<b>Construction Date</b>	01/01/1972
<b>Material Type</b>	Precast Prestressed Concrete	<b>Material Name</b>	PRIMARY
<b>Material Type</b>	Insitu Reinforced Concrete	<b>Material Name</b>	SECONDARY
<b>Pretensioning Type</b>	T-Beam Debonded & Straight Strand		

**Structure Report for Woodbarn Farm (/A404//13.10//)**
**West Parapet**

<b>Location</b>	Deck Edge	<b>Installation Date</b>	01/01/1972
<b>Form</b>	Vehicle Parapet	<b>Modified</b>	Not Modified
<b>Designer</b>	Not Known	<b>Modification Date</b>	
<b>M'facturer/Fabricator</b>	H D A Ltd	<b>Nominal Height</b>	1
<b>Baco Parapet Type</b>	Not Applicable	<b>Modification Date (Baco post only)</b>	
<b>Barrier Type</b>	Other	<b>Primary Material</b>	Aluminium
<b>Material Infill</b>	Mesh Infill	<b>Parapet Group</b>	Not Applicable
<b>Cont Perf Class</b>	Not Applicable	<b>Working Width</b>	Not Applicable
<b>Safety Fence Approach</b>	N	<b>Safety Fence Departure</b>	N
<b>Protection System</b>	Y	<b>Protection System</b>	N
<b>Protection Reason</b>	Not Applicable		
<b>BA 37/92 Ranking Data</b>			
<b>Assessed</b>		<b>Assessed Date</b>	
<b>Contain Capacity Req</b>	Not Specified	<b>Containment Ranking</b>	
<b>Containment Basis</b>	Not Known		
<b>Risk Features Below</b>		<b>Risk Highway Carried Out</b>	
<b>Risk Layout</b>		<b>Risk Containment Features</b>	
<b>Risk Ranking</b>	0.00	<b>Priority Ranking</b>	0.00

**West Parapet Plinth**

<b>Material Type</b>	Precast Reinforced Concrete
----------------------	-----------------------------

**South Joint**

<b>Type</b>	Buried Joint(Continuous Surfacing)	<b>Installation Date</b>	01/01/1972
<b>Product</b>	Not Known Buried Joint	<b>No. of Joints</b>	1

**Northbound Surfacing - (Inspection Element)**

<b>Type</b>	SUR - Carriageway surfacing
-------------	-----------------------------

**Longitudinal Joint**

<b>Type</b>	Buried Joint(Continuous Surfacing)	<b>Installation Date</b>	01/01/1972
<b>Product</b>	Not Known Buried Joint	<b>No. of Joints</b>	1

**Southbound Surfacing - (Inspection Element)**

<b>Type</b>	SUR - Carriageway surfacing
-------------	-----------------------------

**North Joint**

<b>Type</b>	Buried Joint(Continuous Surfacing)	<b>Installation Date</b>	01/01/1972
<b>Product</b>	Not Known Buried Joint	<b>No. of Joints</b>	1

**Main Slab**

<b>Form</b>	Slab Flat	<b>Type</b>	Solid
<b>Material</b>	Insitu Reinforced Concrete	<b>StrengtheningType</b>	None

**Longitudinal Beams**

<b>Shape</b>	T-beam	<b>Strengthening Type</b>	None
<b>Type</b>	Precast Solid	<b>Edge Beam?</b>	Y
<b>Material</b>	Precast Reinforced Concrete		

**East Parapet Plinth**

<b>Material Type</b>	Precast Reinforced Concrete
----------------------	-----------------------------

**Structure Report for Woodbarn Farm (/A404//13.10//)**
**East Parapet**

<b>Location</b>	Deck Edge	<b>Installation Date</b>	01/01/1972
<b>Form</b>	Vehicle Parapet	<b>Modified</b>	Not Modified
<b>Designer</b>	Not Known	<b>Modification Date</b>	
<b>M'facturer/Fabricator</b>	H D A Ltd	<b>Nominal Height</b>	1
<b>Baco Parapet Type</b>	Not Applicable	<b>Modification Date (Baco post only)</b>	
<b>Barrier Type</b>	Other	<b>Primary Material</b>	Aluminium
<b>Material Infill</b>	Mesh Infill	<b>Parapet Group</b>	Not Applicable
<b>Cont Perf Class</b>	Not Applicable	<b>Working Width</b>	Not Applicable
<b>Safety Fence Approach</b>	N	<b>Safety Fence Departure</b>	N
<b>Protection System</b>	Y	<b>Protection System</b>	N
<b>Protection Reason</b>	Not Applicable		
<b>BA 37/92 Ranking Data</b>			
<b>Assessed</b>		<b>Assessed Date</b>	
<b>Contain Capacity Req</b>	Not Specified	<b>Containment Ranking</b>	
<b>Containment Basis</b>	Not Known		
<b>Risk Features Below</b>		<b>Risk Highway Carried Out</b>	
<b>Risk Layout</b>		<b>Risk Containment Features</b>	
<b>Risk Ranking</b>	0.00	<b>Priority Ranking</b>	0.00

**South Footway (L.A.) - (Inspection Element)**

<b>Type</b>	FTP - Footpath
-------------	----------------

**North Abutment**

<b>Support Type</b>	Cantilever Abutment	<b>Material Type</b>	Insitu Reinforced Concrete
<b>Connection Type</b>	Proprietary Elastomeric Bearings	<b>Facing Material</b>	None

**North Transition Slab - (Inspection Element)**

<b>Type</b>	TRB - Buried transition slab
-------------	------------------------------

**North Bearings**

<b>Type</b>	Elastomeric	<b>Installation Date</b>	01/01/1972
<b>Product</b>		<b>No. of Bearings</b>	44

**West Wing Wall**

<b>Anchoring System</b>	Not Known	<b>Length</b>	
		<b>Height</b>	

**East Wing Wall**

<b>Anchoring System</b>	Not Known	<b>Length</b>	
		<b>Height</b>	

**North Foundation**

<b>Type</b>	Spread Footings
-------------	-----------------

**Abutment Wall for North Abutment**

<b>Support Type</b>	Cantilever Abutment	<b>Material Type</b>	Insitu Reinforced
<b>Connection Type</b>	Proprietary Elastomeric	<b>Facing Material</b>	None

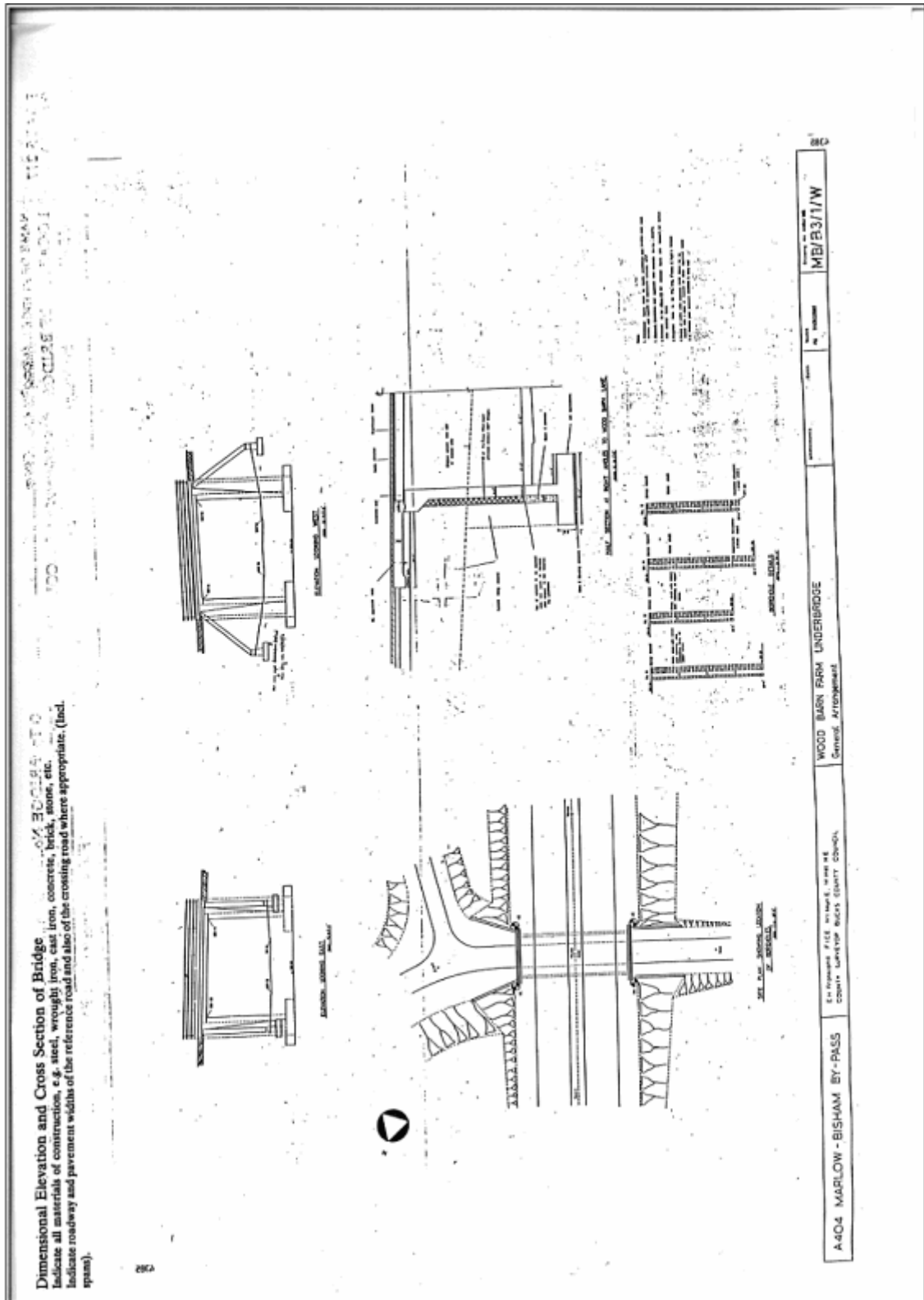
Structure Report for Woodbarn Farm (/A404//13.10//)

General Photograph



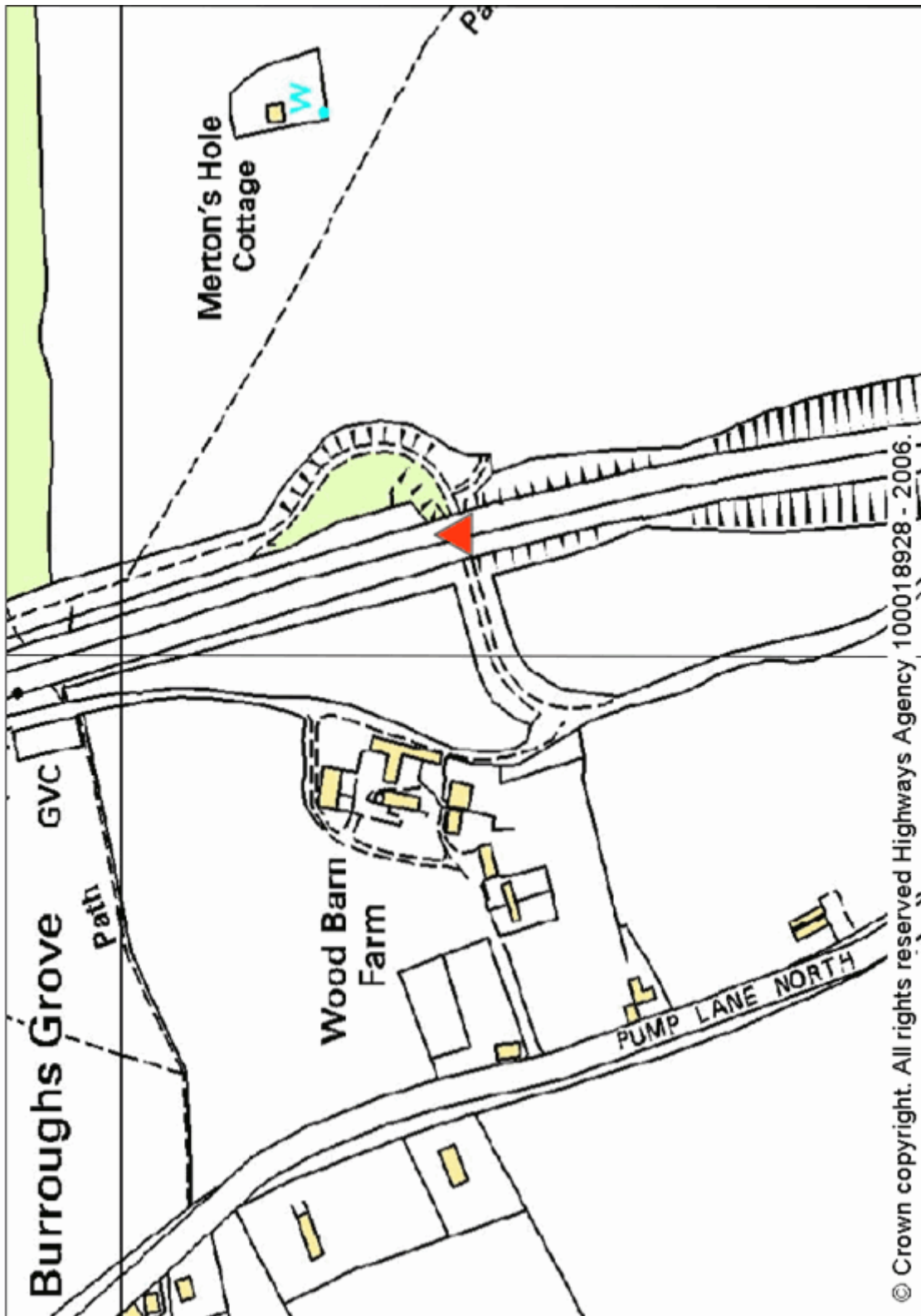
Structure Report for Woodbarn Farm (/A404/13.10/)

Elevation Drawing



Structure Report for Woodbarn Farm (/A404/13.10//)

Map



Structure Report for Woodbarn Farm (/A404/13.10//)

1:50,000 Map

