

Dear colleague

At the recent ASC-AWERB Hub chairs workshop ([see link](#)), we were asked to boost communication between the ASC and AWERBs, so we have set up this new newsletter called 'The Hub' as just one step towards this.

We have also paired individual ASC members to individual Hubs to provide a more personal relationship and way of interacting. Your designated ASC member can be found in the [Hub Support Note](#) and the [Workshop Report](#).

In this first edition of 'The Hub' we have listed top ten tips for successful AWERBs (taken from the [RSPCA-LASA Guiding principles on good practice for Animal Welfare and Ethical Review Bodies](#)) for you to discuss and consider, maybe at your next AWERB meeting. We have also included some other AWERB-related news, links and publications.

We hope you find this first edition of 'The Hub' useful. We would welcome feedback and contributions, so please send your ideas and thoughts to the ASC secretariat: (asc.secretariat@homeoffice.gsi.gov.uk).

Useful links

[The RSPCA-LASA Guiding principles on good practice for Animal Welfare and Ethical Review Bodies](#)

These 'Guiding Principles' are intended to help interpret the requirements for UK local AWERBs and share good practices.

[JRC Science for Policy Report \(2016\)](#)

Accelerating progress in the Replacement, Reduction and Refinement of animal testing through better knowledge sharing.

Your ASC AWERB subgroup



John Landers
(Chair)



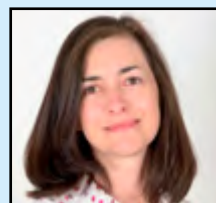
Ken
Applebee



Donald
Bruce



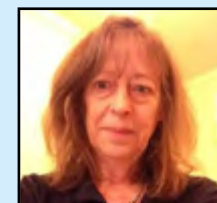
Penny
Hawkins
(co-optee)



Wendy
Jarrett



Sally
Robinson



Clare
Stanford



Gilly
Stoddart

Top ten tips for a successful AWERB

1. Ensure that senior management understands and is committed to the AWERB and provides leadership and support
2. Ensure that the aims and expected outcomes of the AWERB are well thought through and clear
3. Make sure that in discharging its functions the AWERB 'adds value' over and above the work of other external or internal bodies
4. Make sure all the AWERB functions are addressed in some way
5. Think carefully about the selection of participants and particularly the Chair
6. Make sure the process is organised efficiently
7. Ensure that there is effective communication between all parts of the AWERB and any other bodies that affect its work: ensure that all staff know what the AWERB is for, why it is important, who is involved and how it affects them.
8. Be reactive and responsive to the needs of AWERB 'users'
9. At intervals, re-evaluate the AWERB's aims and outcomes and whether its operation is efficient and appropriate
10. Try to interact with and share ideas for good practice with participants in other AWERBs and the ASC

The tips come from [Guiding principles on good practice for Animal Welfare and Ethical Review Bodies](#). More detail on each of these tips can be found on pages 10-13 of the document.

Useful links

[Animals in Science Regulation Unit \(2015\)](#)

Identification and management of patterns of low-level concerns at licensed establishments.

[National Competent Authorities for the implementation of Directive 2010/63/EU on the protection of animals used for scientific purposes \(2014\)](#)

A working document on Inspections and Enforcement to fulfil the requirements under the Directive.

The HUB

The ASC newsletter for AWERBs

Recent ASC publications

The ASC's AWERB Hub Support Note (Version 1, March 2017) and the Report of the 3rd ASC/AWERB Hubs Workshop (3rd March 2017) are now both available on the [ASC web page](#). They both contain a map showing the regional organisation of the 14 AWERB Hubs.

Information for Hubs

Several Hub chairs have asked us for an explanation of the rationale for regional based Hubs, rather than Hubs based on research interests, for example. We chose the regional option partly for logistical reasons, to make it easier to arrange face-to-face meetings. We also thought that having different establishment types in a group would be a more effective way to achieve cross-fertilisation of ideas such as approaches to running the AWERB and implementing its tasks.

Hub chairs also told us that in some widely spread regional Hubs, travel between some AWERBs could be difficult. Realignment of AWERBs between Hubs is possible so please contact the ASC secretariat (asc.secretariat@homeoffice.gsi.gov.uk) if you want to change Hub.

Events

An RSPCA/LASA/LAVA/IAT event for AWERB members, 'Putting Ethics into the AWERB' was held on 15 June 2017, with over 100 participants. If you'd like to receive the meeting output (towards the end of the summer), please contact the RSPCA: (research.animals@rspca.org.uk).

News

The RSPCA and LASA have jointly prepared some materials to help establishments develop induction for AWERB members and they have asked the ASC to publicise this.

The aim of this guidance is to help assist with the implementation of elements of the Home Office recommendation for a 'local [training] module' to 'allow people fulfilling key roles to understand their own role within the local structure and how they personally contribute and work with others' (section 9.11 of the Guidance on the Operation of the ASPA), as well as the European Commission's advice that members of Animal Welfare Bodies 'should receive appropriate individual induction training and Continual Professional Development (CPD)'. The material is available online ([click here](#)).

Contact

We hope you find this first edition of 'The Hub' useful. We would welcome feedback and contributions, so please send your ideas and thoughts to the ASC secretariat: (asc.secretariat@homeoffice.gsi.gov.uk).

Useful links

[The National Centre for the Replacement, Refinement and Reduction of Animals in Research \(NC3Rs\).The Experimental Design Assistant.](#)

'The Experimental Design Assistant (EDA) is an online tool to guide researchers through the design of their experiments, helping to ensure that they use the minimum number of animals consistent with their scientific objectives, methods to reduce subjective bias, and appropriate statistical analysis'.