



Reducing over ordering of LAIV (Fluenz Tetra) for the children's national flu vaccination programme

Last flu season (2016/17), order controls were put into place through ImmForm for General Practice (GP) account customers. The aim was to reduce the amount of Live Attenuated Influenza Vaccine (LAIV), or Fluenz Tetra, that was ordered across England, but not administered to children. Efforts concentrated on GP accounts, as this was where the majority of excess vaccine had been distributed in 2015/16. The controls were tailored to each practice and worked by allocating an amount of vaccine to each GP, based on the number of registered eligible patients. This approach was generally well received and resulted in a 50% reduction in the amount of flu vaccine ordered but not administered to children in general practice.

PHE would like to thank all those who supported this programme of work to prevent avoidable wastage of vaccine and look forward to continuing this trend this coming flu season. Similar controls will be in place for 2017/18, details of which can be found at the end of this section.

CONTENTS

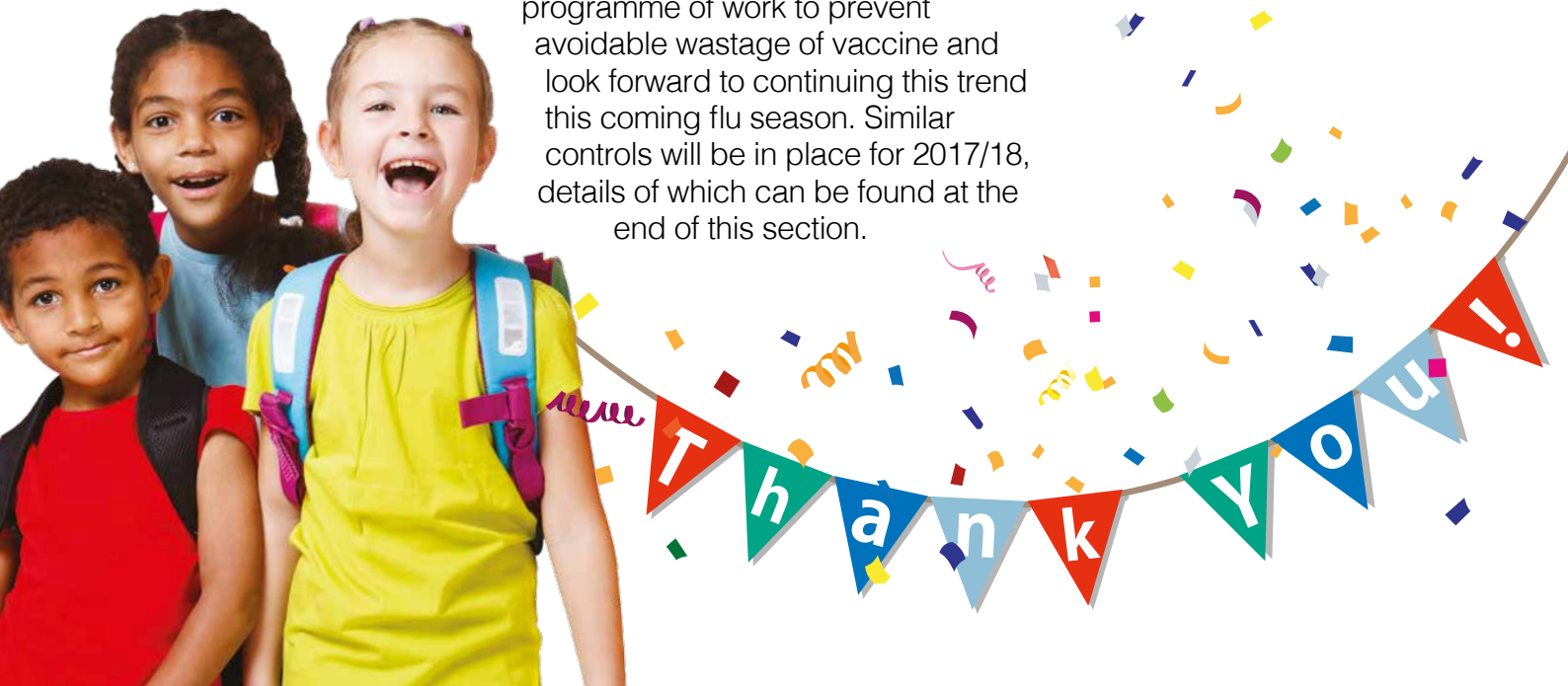
Over ordering in the schools programme

Fluenz Tetra order controls for 2017/18 season

Vaccine Information and Availability 2017/18

Giving a second dose of Fluenz Tetra

Training resources for healthcare practitioners



Over ordering in the schools programme

Last season the number of doses that were ordered by school providers but not administered to children increased significantly from the previous year. As the schools programme grows – incorporating 2 extra year groups this season – the risk of vaccine wastage in this part of the programme increases.

If levels of vaccine ordered in the first few weeks of this season are as high as last year, then PHE will need to place restrictions on vaccine ordering for school providers. This could lead to disruption in programme delivery. It is not possible to apply restrictions to school providers in the same way as we have for GPs. This is due to the differences in programme management across the country. Options for controlling stock from the centre are limited to a fixed volume of vaccine which can be ordered by each account. This is irrespective of the size of the programme delivered by each provider.

For this reason it is important that school providers take care in the amount of vaccine they order, and the timing of those orders, to better match the pattern of delivery through the season. Vaccine requirements should be based on realistic uptake rates. Your support with this approach will help the NHS save a significant amount of money and ensure that vaccine remains available to those who need to order it, throughout the season.



Fluenz Tetra order controls for 2017/18 season

General Practice

GPs will be subject to allocation based controls similar to last year. This year the timing and levels of changes to the allocations have been set out in advance, based on ordering patterns from last season to help planning. Please note – these limits are subject to change (i.e. to increase allocations earlier than planned), to respond to the needs of the programme.

The intention is to apply the following controls to those accounts ordering for the GP part of the programme:

- In the first 4 weeks all customers will be able to order up to the national average uptake for 2 and 3 year olds in 2016 (40% of eligible cohort). Requests for extra vaccine will be considered on a case by case basis.
- In the next 4 weeks, all practices will be able to order up to last year's INDIVIDUAL uptake (or remain at 40% if individual uptake was lower). Requests for extra vaccine will be considered on a case by case basis.
- After these first 8 weeks all practices may order a maximum of 2 packs per week (one order per week). Requests for additional vaccine will continue to be considered on a case by case basis.

Any changes to this schedule in-season will be communicated via the news item on the ImmForm front page.

Requests for additional vaccine should be sent via the ImmForm helpdesk (helpdesk@immform.org.uk / 0844 376 0040) and should be sent in good time before your order cut-off. Out of schedule deliveries will be by exception only.

Customers should remember when determining flu vaccine order volumes for children that provision for 4 year olds has moved to school providers.

School Providers

There will be a high level cap in place. This will allow school providers to order up to 300 packs (3000 doses) in any one week. **This is a limit and not a target.** Our advice to hold no more than 2 weeks' worth of stock at any one time still applies, and should be adhered to by all providers. This will avoid the need to restrict vaccine availability further for the schools programme.

We know that there may be instances where school providers need to order more than 300 packs (3000 doses) in a week. Where this is the case, please contact the ImmForm helpdesk to arrange a large order. These will be dealt with on a case by case basis and will be by exception. If a provider covering a large area feels that they need a higher weekly cap than 300 packs (3000 doses) to deliver their programme, they should discuss their requirements with their commissioner in the first instance.

Orders will be monitored regularly and commissioners will be alerted to any unusual ordering activity and requests for additional vaccine.

Please take measures to ensure that ordering of LAIV is better matched with the pattern of delivery to eligible children, and based on realistic expected uptake rates.

We would ask all those responsible for the ordering of LAIV vaccine to review their past ordering, identify the ways in which ordering can be better informed and act on them. This will ensure vaccine is available for those who need it and save the NHS a significant amount of money.

Practices that ordered significantly more vaccine than they delivered to children in 2016/17 may be contacted individually, to help raise awareness to this issue.

The General Principles for LAIV ordering

- Remember that LAIV is supplied in a 10-dose pack
- Remember that you can order weekly and receive weekly deliveries
- Be realistic about the amount of vaccine that you need, and when you need it
- Spread your orders over the course of the flu vaccination season – later ordered stock will have a later expiry date and will last longer
- Hold no more than 2 weeks' worth of stock in your fridge. Local stockpiling can cause delays or restrictions on stock being released to the NHS, and increases the risk of significant loss of stock if there is a cold chain failure in your supply chain or premises.

....and remember

PHE orders sufficient LAIV to ensure that all providers can improve on their previous uptake rates. We spread the deliveries of LAIV into the UK over several weeks to reduce risk of substantial supply chain failure and to extend the shelf life of the vaccine throughout the season.

This means that whilst you do not need to worry that we have not ordered enough vaccine, it does mean that we **cannot** support a scenario where providers order the majority of their total vaccine requirement in the initial ordering period. Ordering excess stock, especially early in the season, creates a risk that it will expire before it can be used, and subsequently in many cases additional stock will then need to be ordered. This could lead to a shortage of vaccine. You can avoid this by maintaining awareness of the stock you are holding locally and only order what you need to top up on a weekly basis.

Controls on inactivated flu vaccine ordering

The inactivated influenza vaccines, procured by PHE for children who are contraindicated for Fluenz Tetra and in a clinical risk group, will also be subject to the following ordering controls:

- Inactivated influenza vaccine (split virion) BP will have an initial cap of 5 doses per order per week, and
- Fluarix Tetra® will have an order cap of 30 doses per order per week.

These controls will also be regularly reviewed and updates on changes will be provided on the ImmForm news item.

Vaccine Information and Availability 2017/18

PHE has centrally procured flu vaccine for children included in this year's phase of the roll out including those aged from six months to less than 18 years old in clinical risk groups. Aside from this central procurement of vaccine for children less than 18 years of age, it remains the responsibility of GPs and other providers to order sufficient flu vaccine directly from manufacturers for older eligible patients of the flu programme in 2017/18.

The following vaccines will be available for the 2017/18 influenza season for children, and are expected to be available to order via the ImmForm website from late September.

Further details on the timing of availability of vaccines for each part of the programme (2 and 3 year olds through GPs, and 4 to 8 year olds through school-based programmes) will be published as information becomes available.

Please refer to guidance from your respective health departments on supply of influenza vaccines in Scotland, Wales and Northern Ireland.

Vaccine	Manufacturer	Indicative date for ordering to start
Fluenz Tetra (LAIV)	AstraZeneca UK Ltd	Late September
Inactivated influenza vaccine (split virion) BP	Sanofi Pasteur	Late September
Fluarix Tetra	GSK	Late September

Eligibility and the type of vaccine to offer children under 18 is as follows:

Eligible cohort	Which vaccine		Setting in which it is normally offered	Key notes
	Children in clinical risk groups	Children not in clinical risk groups		
6 months to less than 2 years old	Offer suitable inactivated flu vaccine.	Not applicable	General practice	Eligibility is based on age at which they present
2 and 3 years olds (but not 4 years or older) on 31 August 2017*	Offer LAIV. If LAIV is medically contraindicated, then offer suitable inactivated flu vaccine.	Offer LAIV (unless medically contraindicated)	General practice	Children who turn 2 years of age after 31 August 2017 are not eligible Children who were 3 and turn 4 after 31 August 2017 remain eligible
Children in reception class and school years 1, 2, 3 and 4 (aged 4 to 8 years on 31 August 2017)**	Offer LAIV. If LAIV is medically contraindicated, then offer suitable inactivated flu vaccine.	Offer LAIV (unless medically contraindicated)	School based provision	At risk children may be offered vaccination in general practice if the school session is late in the season or parents prefer it
Children in school year 5 and above (aged 9 years or older on 31 August 2017) and less than 18 years old	Offer LAIV. If LAIV is medically contraindicated, then offer suitable inactivated flu vaccine.	Not applicable	General practice	

*Date of birth on or after 1 September 2013 and on or before 31 August 2015.

**Date of birth on or after 1 September 2008 and on or before 31 August 2013.

Giving a second dose of Fluenz Tetra

The patient information leaflet provided with LAIV states that children should be given two doses of this vaccine if they have not had flu vaccine before. However, the Joint committee on Vaccination and Immunisation (JCVI) considers that a second dose of the vaccine provides only modest additional protection. On this basis, JCVI has advised that most children should be offered a single dose of LAIV. However, children in clinical risk groups aged 2 to less than 9 years who have not received flu vaccine before should be offered two doses of LAIV (given at least four weeks apart).

Training resources for healthcare practitioners

Two information documents for healthcare practitioners providing information on the annual flu vaccination programme, the vaccines and how to administer them have been updated and are available at the following links:



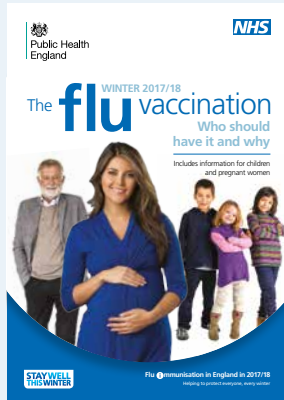
Training slide sets have also been revised and are available to view and download at the following links:



An interactive flu immunisation e-learning programme ([weblink 19](#)), written by PHE, and produced by Health Education England's e-Learning for Healthcare, is also available for anyone involved in delivering the flu immunisation programme. The updated version of this programme for the 2017/18 flu season should be live by 18 August 2017.

Resources

The following resources about flu vaccination for winter 2017/18 are available free of charge:



The flu vaccination winter 2017/18: Who should have it and why

Product code: 3079111B

This leaflet for patients gives information on all groups eligible for flu vaccination, including children and pregnant women.

[weblink 1](#)



Protecting your child against flu 2017/18

Product code: 2902552

The leaflet explains which children are eligible for flu vaccination, as well as describing the disease and the vaccine.

[weblink 2](#)

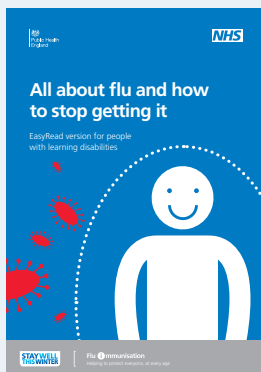


Pregnancy: How to help protect you and your baby

Product code: 2903655

This leaflet sets out information on the flu and whooping cough vaccines offered during pregnancy, plus information on rubella vaccination which is recommended for women who require protection before becoming pregnant again.

[weblink 3](#)



All about flu and how to stop getting it: easy read version for people with learning disabilities

Product code: 2904202

This easy read leaflet is aimed at people who have a learning disability. It explains why it is important for them to have flu vaccination. It can also be useful for people whose first language is not English and for people with a low reading age.

[weblink 4](#)



All about flu and how to stop getting it: easy read version for children with learning disabilities

Product code: 3248960

This easy read leaflet is aimed at children who have a learning disability. It explains why it is important for them to have flu vaccination.

[weblink 5](#)

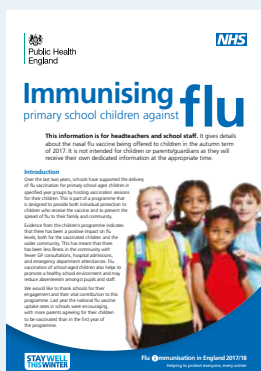


Five reasons to vaccinate your child against flu

Product code: 2902151

Information poster aimed at parents explaining the benefits of vaccinating children against flu

[weblink 6](#)



Immunising primary school children against flu: advice for headteachers

Product code: 2016027

This briefing is about the nasal spray vaccine being offered to children in schools in the autumn of 2017.

[weblink 7](#)



Stay Well This Winter

The flu phase of the Stay Well This Winter campaign will run during 9 – 29 October 2017 across TV, radio, digital, social channels, PR and partnerships activity. It will promote flu vaccination uptake amongst pregnant women, children, and those with long term health conditions. The campaign toolkits and assets will be available free of charge in the end of September on the PHE Campaign Resource Centre ([weblink 14](#)).

And these are available to download:

Increasing influenza immunisation uptake among children: best practice guidance for general practice

This document sets out key strategies for general practice to help increase flu vaccine uptake in children aged two and three years old.

Download at: [weblink 8](#)

Flu vaccination invitation letters: for general practice and schools

These letter templates can be downloaded and adapted to suit local needs. They include letters for general practice to invite at risk patients and children for flu vaccination. There is also an easy read version for those with learning difficulties. A letter template is also available for healthcare teams providing flu immunisation in schools. It should be sent to parents of eligible children, along with an accompanying information leaflet and consent form.

Download invitation letter template for at risk patients: [weblink 9](#)

Download invitation letter template for children aged 2 and 3 years: [weblink 10](#)

Download invitation letter template for those with learning difficulties: [weblink 11](#)

Download invitation letter template for schools: [weblink 12](#)

Flu immunisation consent form

This consent form template can be downloaded and adapted to suit needs of local healthcare teams providing flu vaccination in schools. It should be sent to parents of eligible children, along with an information leaflet.

Download consent form template: [weblink 13](#)

Web links

- web link 1 <https://www.gov.uk/government/publications/flu-vaccination-who-should-have-it-this-winter-and-why>
- web link 2 <https://www.gov.uk/government/publications/flu-vaccination-leaflets-and-posters>
- web link 3 <https://www.gov.uk/government/publications/pregnancy-how-to-help-protect-you-and-your-baby>
- web link 4 <https://www.gov.uk/government/publications/flu-leaflet-for-people-with-learning-disability>
- web link 5 <https://www.gov.uk/government/publications/easy-read-childhood-nasal-flu-leaflet>
- web link 6 <https://www.gov.uk/government/publications/flu-vaccination-leaflets-and-posters>
- web link 7 <https://www.gov.uk/government/publications/flu-vaccination-in-schools>
- web link 8 <https://www.gov.uk/government/publications/flu-vaccine-best-practice-guide-for-gps>
- web link 9 <https://www.gov.uk/government/publications/flu-vaccination-invitation-letter-template-for-at-risk-patients-and-their-carers>
- web link 10 <https://www.gov.uk/government/publications/flu-vaccination-invitation-letter-template-for-children-aged-2-3-and-4-years>
- web link 11 <https://www.gov.uk/government/publications/flu-vaccination-easy-read-invitation-letter-template>
- web link 12 <https://www.gov.uk/government/publications/flu-vaccination-in-schools>
- web link 13 <https://www.gov.uk/government/publications/flu-vaccination-in-schools>
- web link 14 <https://campaignresources.phe.gov.uk/resources/campaigns/34-stay-well-this-winter-/resources>
- web link 15 https://www.gov.uk/government/uploads/system/uploads/attachment_data/file/635920/Childhood_flu_programme_information_for_healthcare_practitioners.pdf
- web link 16 https://www.gov.uk/government/uploads/system/uploads/attachment_data/file/635920/Childhood_flu_programme_information_for_healthcare_practitioners.pdf

Web links

- web link 17 <https://www.slideshare.net/PublicHealthEngland/the-national-flu-immunisation-programme-201718-training-for-professionals>
- web link 18 <https://www.slideshare.net/PublicHealthEngland/national-childhood-flu-immunisation-programme-201718-training-for-healthcare-practitioners>
- web link 19 <http://www.e-lfh.org.uk/programmes/flu-immunisation/>